



HELLENIC REPUBLIC



MINISTRY OF ECONOMY AND FINANCE



**GENERAL SECRETARIAT OF
THE NATIONAL STATISTICAL SERVICE
OF GREECE**

Piraeus, 21 November 2007

PRESS RELEASE

Turnover indices in Transport Sector¹

Second quarter 2007

The National Statistical Service of Greece publishes Turnover Indices in Transport Sector with base year 2005 = 100.0 covering the period from 2005 onwards, according to final results. The evolution of the indices for the 2nd quarter 2007 is as follows:

Year on Year growth rates

⇒ The Turnover Indices in Transport Sector in the 2nd quarter as compared to the 2nd quarter 2006 increased by 17.5% in land transport, decreased by 2.9% in sea and coastal transport, increased by 3.5% in air transport and by 8.2% in supporting and auxiliary transport activities, including activities of travel agencies. A year earlier the annual rate of change was 40.0% (land), 14.2%(sea), 5.3%(air) and 15.3% (auxiliary), correspondingly.

Quarter on Quarter growth rates

⇒ The Turnover Indices in Transport sector in the 2nd quarter 2007 as compared to the 1st quarter 2007 increased by 34.6% in land transport, 53.1% in sea and coastal transport, 32.1% in air transport and by 41.7% in supporting and auxiliary transport activities, including activities of travel agencies. A year earlier the quarterly rate of change was 42.3% (land), 96.1% (sea), 52.5% (air) and 41.5% (auxiliary), correspondingly. The huge quarterly rates of change reflect the sector's intense seasonality.

The tables and the diagrams that follow present the evolution of the indices from 2005 onwards

¹ The compilation and publication of these new indices in Transport Sector is based upon the requirements of the Council Regulation (EC) No 1165/98 concerning short-term statistics as well as the amendment Regulation 1158/2005 of the European Parliament and Council amending the Council Regulation (EC) No 1165/98.

The turnover index is an important business indicator. The objective of this index is to show the evolution of the market for goods and services. Turnover comprises the totals invoiced (excluding VAT, other similar deductive taxes, subsidies and other operating income) by the observation units during the reference period (quarter). This corresponds to the market sales of goods or services supplied to third parties.

The Turnover Indices in Transport Sector are compiled for the **NACE – Rev.1.1 division 60** – land transport, transport via pipe lines, **61** – water transport, **62** – air transport and **63** – supporting and auxiliary transport activities, activities of travel agencies.

For further information on data please contact

- Papadopoulou Zoi, tel. (0030)2104852056 (divisions 60,62,63)
- Goulas Vassileios, tel. (0030)2104852187 (division 61)

Division of Statistics on Trade and Services

Fax: (0030) 2104852398

E-mail: trade.services@statistics.gr

TABLE 1
Evolution of Turnover Index in Land Transport
working days adjusted series
(2005=100,0)

| Year - Quarter | | Index | Year on Year growth rates (%) | Quarter on quarter growth rates (%) |
|----------------|----------------|--------------|-------------------------------|-------------------------------------|
| 2005 | A | 81,3 | — | — |
| | B | 101,1 | — | 24,4 |
| | C | 129,0 | — | 27,6 |
| | D | 88,6 | — | -31,3 |
| | <i>Average</i> | <i>100</i> | | |
| 2006 | A | 99,4 | 22,3 | 12,2 |
| | B | 141,5 | 40,0 | 42,3 |
| | C | 132,8 | 2,9 | -6,2 |
| | D | 121,9 | 37,5 | -8,2 |
| | <i>Average</i> | <i>123,9</i> | <i>23,9</i> | |
| 2007 | A | 123,5 | 24,3 | 1,4 |
| | B | 166,2 | 17,5 | 34,6 |

DIAGRAM

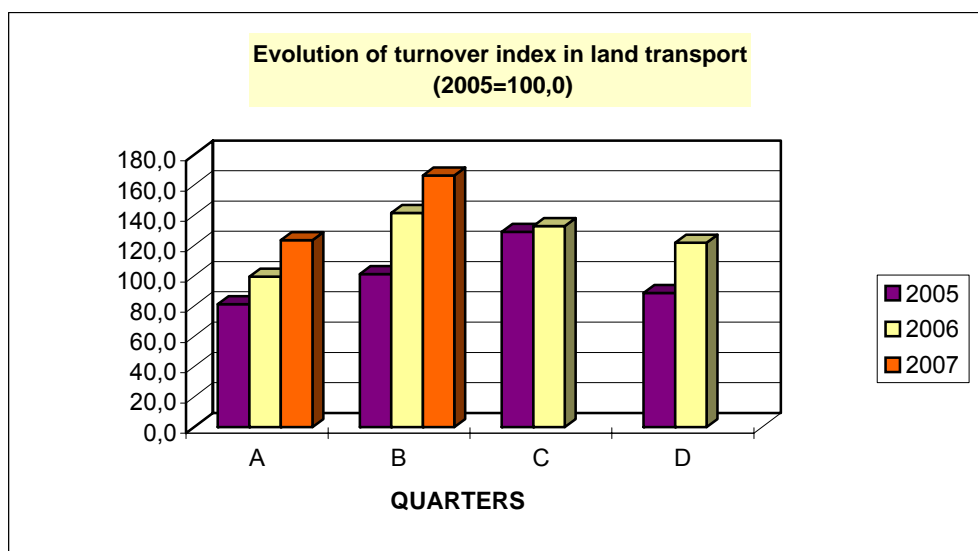


TABLE 2
Evolution of Turnover Index in Sea and Coastal Transport
working days adjusted series
(2005=100,0)

| Year - Quarter | | Index | Year on Year growth rates (%) | Quarter on quarter growth rates (%) |
|----------------|----------------|-------------|-------------------------------|-------------------------------------|
| 2005 | A | 51,2 | — | — |
| | B | 96,8 | — | 88,9 |
| | C | 149,1 | — | 54,1 |
| | D | 102,9 | — | -31,0 |
| | <i>Average</i> | <i>100</i> | | |
| 2006 | A | 56,4 | 10,1 | -45,2 |
| | B | 110,5 | 14,2 | 96,1 |
| | C | 155,2 | 4,1 | 40,4 |
| | D | 72,9 | -29,1 | -53,0 |
| | <i>Average</i> | <i>98,8</i> | <i>-1,2</i> | |
| 2007 | A | 70,1 | 24,4 | -3,8 |
| | B | 107,4 | -2,9 | 53,1 |

DIAGRAM

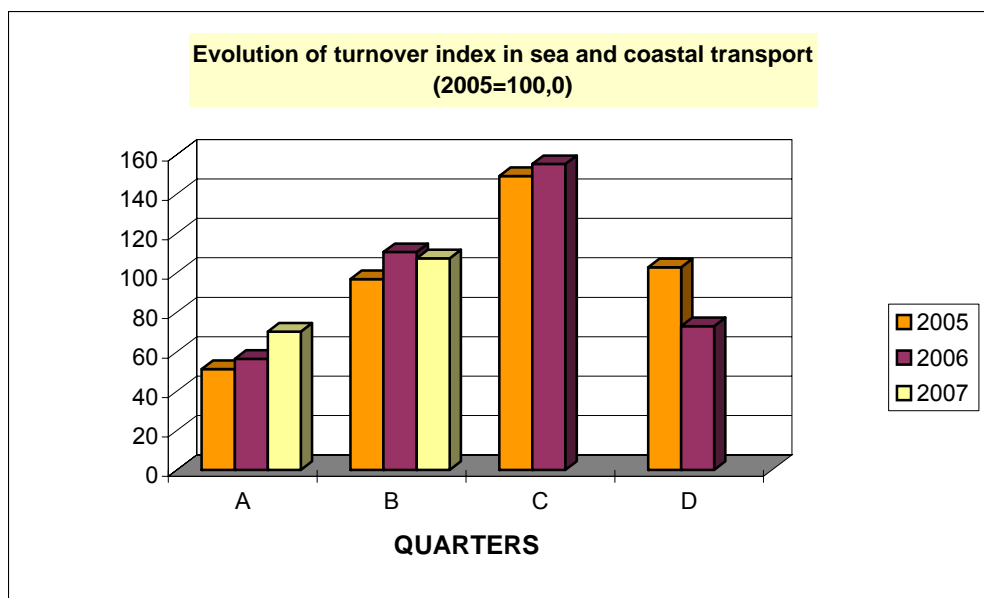


TABLE 3
Evolution of Turnover Index in Air Transport
working days adjusted series
(2005=100,0)

| Year - Quarter | | Index | Year on Year growth rates (%) | Quarter on quarter growth rates (%) |
|----------------|----------------|--------------|-------------------------------|-------------------------------------|
| 2005 | A | 74,7 | — | — |
| | B | 108,1 | — | 44,6 |
| | C | 132,7 | — | 22,8 |
| | D | 84,5 | — | -36,3 |
| | <i>Average</i> | <i>100</i> | | |
| 2006 | A | 74,6 | -0,1 | -11,7 |
| | B | 113,8 | 5,3 | 52,5 |
| | C | 133,7 | 0,7 | 17,5 |
| | D | 102,9 | 21,7 | -23,0 |
| | <i>Average</i> | <i>106,2</i> | <i>6,2</i> | |
| 2007 | A | 89,2 | 19,5 | -13,3 |
| | B | 117,7 | 3,5 | 32,1 |

DIAGRAM

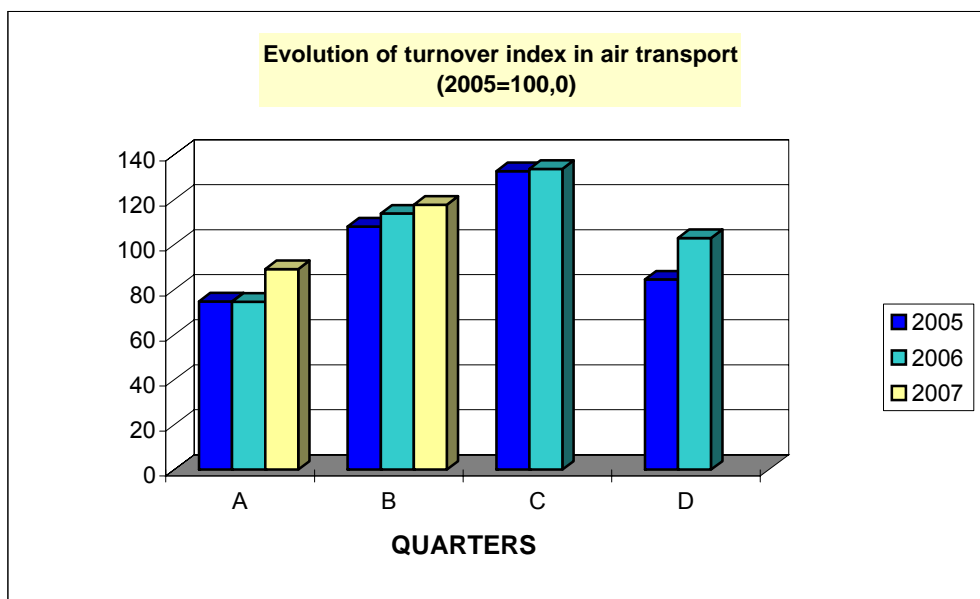


TABLE 4
Evolution of Turnover Index in Supporting and Auxiliary Transport
Activities;Activities of Travel Agencies

working days adjusted series

(2005=100,0)

| Year - Quarter | | Index | Year on Year growth rates (%) | Quarter on quarter growth rates (%) |
|----------------|---------|-------|-------------------------------|-------------------------------------|
| 2005 | A | 75,1 | — | — |
| | B | 99,2 | — | 32,1 |
| | C | 109,8 | — | 10,7 |
| | D | 115,8 | — | 5,5 |
| | Average | 100 | | |
| 2006 | A | 80,8 | 7,6 | -30,2 |
| | B | 114,4 | 15,3 | 41,5 |
| | C | 120,2 | 9,5 | 5,1 |
| | D | 125,8 | 8,6 | 4,6 |
| | Average | 110,3 | 10,3 | |
| 2007 | A | 87,3 | 8,0 | -30,6 |
| | B | 123,7 | 8,2 | 41,7 |

DIAGRAM

