



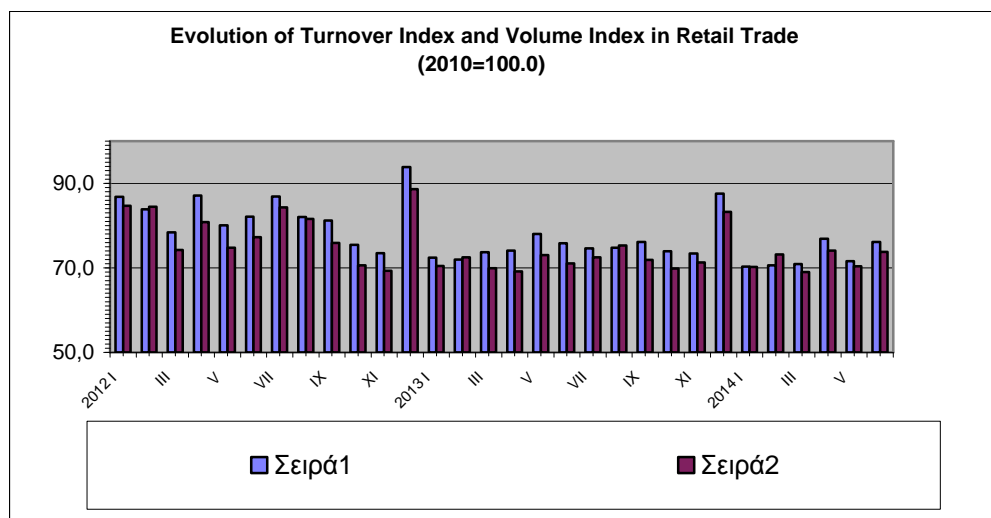
PRESS RELEASE

TURNOVER INDEX IN RETAIL TRADE: June 2014

Hellenic Statistical Authority announces the turnover and volume indices in retail trade with base year (2010=100.0) for June 2014 according to provisional and working adjusted data as follows:

The turnover index in retail trade, in June 2014 recorded an increase of 0.4% compared to June 2013, while compared to May 2014, recorded an increase of 6.4%.

The volume of retail trade (i.e. turnover in retail trade at constant prices), in June 2014, recorded an increase of 3.8% compared to June 2013, while compared to May 2014, recorded an increase of 4.8%.



Information:

Economic and Short-Term
Indicators Division

Retail Sales Value Index
Section

ret.sal@statistics.gr

Fax: 00302131352729

Aikaterini Mertika

Tel: 0030 2131352127

a.mertika@statistics.gr

Evangelos Chatzopoulos

Tel: 0030 2131352737

e.chatzopoulos@statistics.gr

Time series of the index is available on the ELSTAT website :

http://www.statistics.gr/portal/page/portal/ESYE/PAGE-themes?p_param=A0508&r_param=DKT39&y_param=TS&mytabs=0

1. Annual comparison of the turnover index

The 0.4% increase in the turnover index in June 2014 compared to June 2013 is due to the following changes in the main categories of retail business.

Specialized store categories	Annual rate %
Pharmaceutical products, cosmetics	15.4
Books, stationery, other goods	12.4
Automotive fuel	1.4
Supermarkets	-1.9
Furniture, electrical equipment. household equipment	-6.9

2. Annual comparison of the volume index

The 3.8 increase in the volume index in June 2014 compared to June 2013 is due to the following changes in the main categories of retail business.

Specialized store categories	Annual rate %
Books, stationery, other goods	16.9
Pharmaceutical products, cosmetics	10.0
Automotive fuel	1.4
Supermarkets	1.4
Furniture, electrical equipment. household equipment	-10.5

Table 1. Annual rates of change of turnover index and volume index in retail trade

Base year : 2010=100.0

Retail Trade Business	Turnover Index			Volume Index		
	Index June 2014*	Index June 2013	Annual change (%)	Index June 2014*	Index June 2013	Annual change (%)
Overall Index	76.1	75.9	0.4	73.8	71.1	3.8
Overall Index (except automotive fuel)	75.5	75.3	0.2	73.7	72.1	2.2
I. Main sectors						
Food sector	83.8	86.0	-2.5	80.9	79.7	1.5
Automotive fuel sector	80.3	79.2	1.4	68.0	67.0	1.4
Non-food sector (except automotive fuel)	66.8	64.2	4.0	61.5	63.3	-2.8
II. Specialized store categories						
Supermarkets	85.5	87.2	-1.9	83.5	82.3	1.4
Department stores	81.9	85.7	-4.5	80.3	87.1	-7.8
Automotive fuel	80.3	79.2	1.4	68.0	67.0	1.4
Food-beverages-tobacco	73.4	79.8	-8.0	70.1	74.0	-5.2
Pharmaceutical products. cosmetics	71.6	62.0	15.4	73.2	66.6	10.0
Clothing and footwear	62.8	59.8	5.0	58.4	54.9	6.4
Furniture. electrical equipment. household equipment	57.4	61.6	-6.9	59.4	66.3	-10.5
Books. stationery. other goods	80.4	71.6	12.4	85.6	73.2	16.9
Retail sale not in stores	62.4	58.6	6.4			
				:	:	:

* Provisional data

: No data available

Table 2. Monthly rates of change of turnover index and volume index in retail trade
(Reduced data on the basis of a typical month)

Base year : 2010=100.0

Retail Trade Business	Turnover Index			Volume Index		
	Index June 2014*	Index May 2014	Monthly change (%)	Index June 2014*	Index May 2014	Monthly change (%)
Overall Index	76.1	71.6	6.4	73.8	70.4	4.8
Overall Index (except automotive fuel)	75.5	71.4	5.7	73.7	70.9	4.0
I. Main sectors						
Food sector	83.8	79.1	6.0	80.9	76.2	6.1
Automotive fuel sector	80.3	73.1	9.8	68.0	62.3	9.0
Non-food sector (except automotive fuel)	66.8	63.5	5.3	61.5	60.6	1.6
II. Specialized store categories						
Supermarkets	85.5	80.6	6.1	83.5	78.5	6.3
Department stores	81.9	74.4	10.0	80.3	75.9	5.8
Automotive fuel	80.3	73.1	9.8	68.0	62.3	9.0
Food-beverages-tobacco	73.4	70.0	4.9	70.1	66.7	5.1
Pharmaceutical products. cosmetics	71.6	64.6	10.7	73.2	66.2	10.5
Clothing and footwear	62.8	65.5	-4.1	58.4	66.3	-11.9
Furniture. electrical equipment. household equipment	57.4	52.8	8.8	59.4	55.5	7.0
Books. stationery. other goods	80.4	78.6	2.3	85.6	84.0	2.0
Retail sale not in stores	62.4	57.5	8.5	:	:	:

* Provisional data

: No data available

Table 3. Mean indices of period January-June of the turnover and the volume in Retail Trade
(Reduced data on the basis of a typical month)

Overall Index	Turnover Index January-June			Volume Index January-June		
	2014*	2013	Μεταβολή (%)	2014*	2013	Μεταβολή (%)
Overall Index	72.8	74.4	-2.2	71.8	71.0	1.1
Overall Index (except automotive fuel)	71.8	73.6	-2.5	71.4	72.3	-1.2
I. Main sectors						
Food sector	79.9	82.2	-2.8	76.8	76.7	0.1
Automotive fuel sector	78.2	78.7	-0.6	67.2	65.6	2.3
Non-food sector (except automotive fuel)	63.5	64.6	-1.8	62.0	66.8	-7.3
Specialized store categories						
II. Supermarkets	81.4	83.6	-2.6	79.1	79.5	-0.4
Department stores	71.0	81.4	-12.7	73.0	83.5	-12.6
Automotive fuel	78.2	78.7	-0.6	67.2	65.6	2.3
Food-beverages-tobacco	70.6	75.1	-5.9	67.1	70.1	-4.2
Pharmaceutical products. Cosmetics	66.2	65.8	0.5	67.9	71.0	-4.3
Clothing and footwear	62.1	60.7	2.4	64.6	61.2	5.5
Furniture. electrical equipment, household equipment	53.0	56.7	-6.5	56.2	61.2	-8.3
Books, stationery. other goods	80.3	77.3	3.9	85.9	78.7	9.1
Retail sale not in stores	57.1	57.9	-1.4	:	:	:

* Provisional data

: Volume index is not calculated for the category "etail sale not in stores"

Table 4. Monthly evolution of the turnover in retail trade at current prices
(Reduced data on the basis of a typical month)

Base year: 2010=100.0

Year-month	Overall index		Overall index (except automotive fuel)		Food sector		Automotive fuel sector		Non-food sector (except automotive fuel)	
	Index	Annual change (%)	Index	Annual change (%)	Index	Annual change (%)	Index	Annual change (%)	Index	Annual change (%)
2012 I	86.9	-8.8	84.5	-9.3	90.7	-6.0	98.9	-6.6	78.0	-13.0
II	83.8	-11.0	81.9	-11.0	90.0	-6.0	93.8	-10.9	73.4	-16.7
III	78.4	-15.2	77.3	-14.2	85.3	-13.0	84.1	-19.3	68.8	-15.8
IV	87.1	-11.4	85.5	-13.0	94.6	-9.4	95.4	-3.0	76.0	-17.5
V	80.1	-9.0	80.9	-8.6	91.8	-2.4	75.4	-11.5	69.4	-16.1
VI	82.2	-9.7	82.3	-10.0	94.5	-1.7	80.9	-8.3	69.5	-19.8
VII	86.9	-8.1	86.5	-8.5	93.5	-5.7	88.2	-6.3	79.2	-11.8
VIII	82.1	-7.3	81.0	-8.1	91.9	-6.2	87.7	-3.2	69.5	-11.0
IX	81.2	-10.4	79.8	-11.5	88.8	-8.0	88.4	-5.1	70.5	-15.7
X	75.5	-17.1	75.0	-16.6	81.0	-15.7	77.8	-19.9	68.8	-17.5
XI	73.5	-16.5	72.5	-16.9	79.3	-12.8	78.6	-14.3	65.5	-21.7
XII	93.9	-7.8	94.6	-8.5	98.5	-6.2	89.1	-4.4	91.1	-10.6
<i>Average</i>	82.6	-11.0	81.8	-11.3	90.0	-7.7	86.5	-9.5	73.3	-15.5
2013 I	72.4	-16.6	70.8	-16.3	76.9	-15.2	81.4	-17.7	64.6	-17.2
II	72.0	-14.1	70.7	-13.8	77.4	-14.1	79.1	-15.6	63.9	-12.9
III	73.7	-5.9	72.4	-6.4	83.2	-2.5	81.3	-3.4	60.5	-12.0
IV	74.1	-14.9	74.2	-13.3	80.2	-15.2	74.1	-22.3	68.1	-10.3
V	78.0	-2.6	78.3	-3.2	89.6	-2.4	76.8	1.9	66.5	-4.2
VI	75.9	-7.7	75.3	-8.5	86.0	-9.0	79.2	-2.2	64.2	-7.5
VII	74.6	-14.1	74.2	-14.3	82.2	-12.0	77.6	-12.1	66.0	-16.7
VIII	74.8	-8.9	73.3	-9.5	86.1	-6.3	83.5	-4.7	59.9	-13.9
IX	76.1	-6.3	75.1	-5.9	83.7	-5.7	82.2	-7.0	66.4	-5.8
X	73.9	-2.1	73.0	-2.7	79.1	-2.3	79.2	1.8	67.1	-2.5
XI	73.4	-0.1	72.3	-0.2	77.1	-2.7	79.8	1.6	67.9	3.6
XII	87.6	-6.7	87.9	-7.0	91.8	-6.8	85.9	-3.6	84.8	-6.9
<i>Average</i>	75.6	-8.6	74.8	-8.6	82.8	-8.0	80.0	-7.5	66.7	-9.1
2014 I	70.3	-2.9	68.2	-3.7	74.2	-3.6	81.4	0.0	62.3	-3.5
II	70.6	-1.9	69.2	-2.0	76.7	-0.8	77.8	-1.7	61.8	-3.3
III	70.9	-3.8	69.5	-4.0	80.5	-3.3	78.4	-3.5	58.1	-4.0
IV	76.9	3.8	76.9	3.6	85.0	5.9	78.2	5.5	68.5	0.6
V	71.6	-8.3	71.4	-8.8	79.1	-11.7	73.1	-4.8	63.5	-4.6
VI*	76.1	0.4	75.5	0.2	83.3	-2.5	80.3	1.4	66.8	4.0

* Provisional data

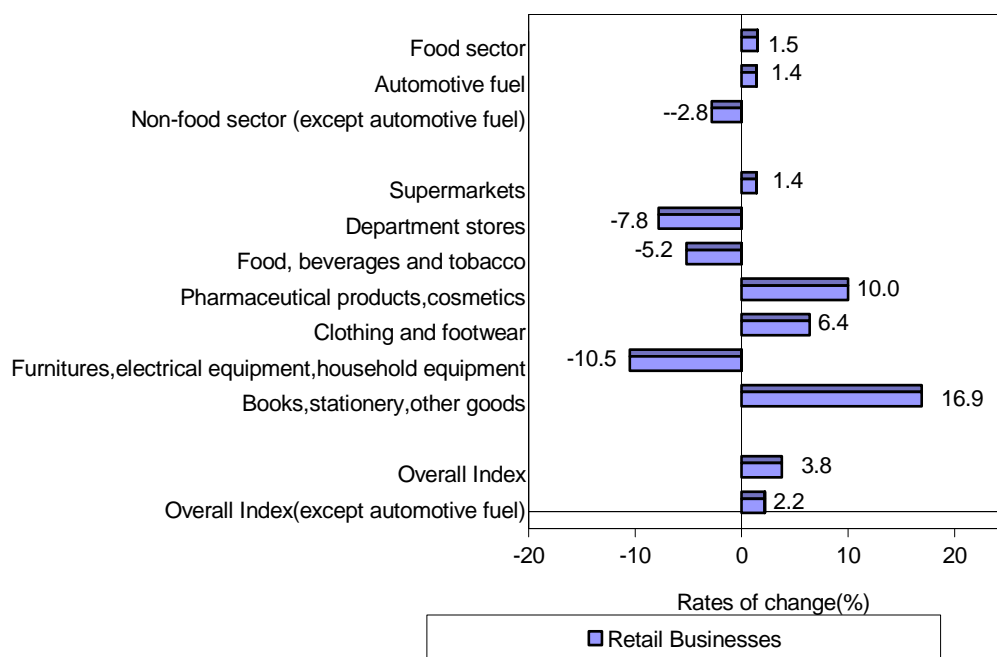
**Table 5. Monthly evolution of the turnover in volume in real terms
(Reduced data, on the basis of a typical month)**

Base year: 2010=100.0

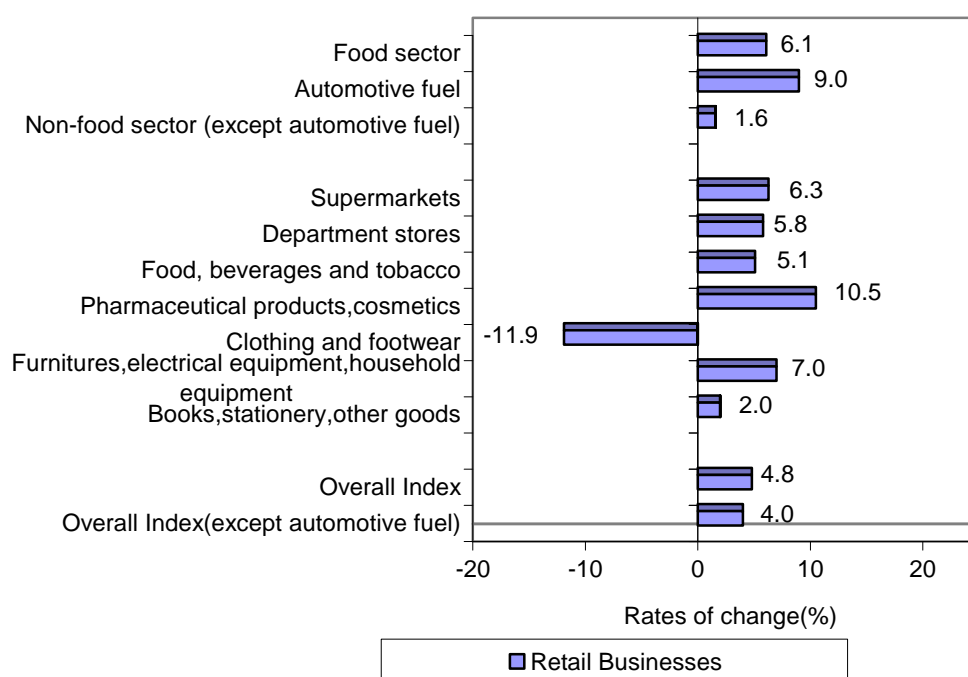
Year-month	Overall index		Overall index (except automotive fuel)		Food sector		Automotive fuel sector		Non-food sector (except automotive fuel)	
	Index	Annual change (%)	Index	Annual change (%)	Index	Annual change (%)	Index	Annual change (%)	Index	Annual change (%)
2012 I	84.7	-10.6	84.8	-10.5	86.3	-8.9	84.0	-11.4	82.3	-12.7
II	84.5	-12.9	85.9	-11.9	85.4	-8.3	77.5	-17.9	85.2	-16.1
III	74.2	-16.2	75.7	-14.2	81.1	-14.5	67.4	-25.9	69.3	-14.2
IV	80.8	-13.3	82.1	-13.8	89.7	-10.3	74.8	-11.3	73.6	-18.0
V	74.8	-10.0	77.5	-9.2	86.6	-3.6	62.0	-15.3	67.3	-16.2
VI	77.2	-10.6	79.1	-10.7	89.6	-3.1	68.7	-10.9	67.3	-19.9
VII	84.3	-9.2	86.7	-9.2	89.2	-7.2	73.2	-10.0	83.0	-11.8
VIII	81.6	-9.3	84.3	-8.8	87.6	-8.0	69.2	-12.0	79.2	-10.4
IX	75.9	-11.8	77.1	-11.8	84.6	-9.2	70.4	-12.3	68.8	-15.3
X	70.6	-18.1	72.2	-16.9	77.2	-16.4	63.5	-24.7	66.7	-17.3
XI	69.3	-16.7	69.9	-16.7	75.6	-12.7	66.7	-17.4	63.7	-21.2
XII	88.6	-8.3	91.3	-8.6	94.0	-5.6	75.8	-8.2	88.6	-11.1
<i>Average</i>	<i>78.9</i>	<i>-12.2</i>	<i>80.6</i>	<i>-11.8</i>	<i>85.6</i>	<i>-9.0</i>	<i>71.1</i>	<i>-14.9</i>	<i>74.6</i>	<i>-15.2</i>
2013 I	70.4	-16.8	71.0	-16.3	72.6	-15.9	68.2	-18.8	68.7	-16.5
II	72.5	-14.1	74.3	-13.4	72.9	-14.6	64.3	-17.1	75.4	-11.5
III	69.9	-5.8	70.7	-6.7	77.8	-4.1	66.6	-1.2	61.6	-11.0
IV	69.1	-14.5	70.7	-13.8	74.4	-17.1	62.5	-16.4	66.5	-9.7
V	73.1	-2.3	74.9	-3.4	82.9	-4.3	65.3	5.3	65.5	-2.7
VI	71.1	-8.0	72.1	-8.8	79.7	-11.1	67.0	-2.5	63.3	-5.9
VII	72.5	-13.9	74.4	-14.2	77.1	-13.6	64.8	-11.5	70.6	-15.0
VIII	75.3	-7.7	76.7	-9.1	81.2	-7.3	69.3	0.2	69.7	-11.9
IX	71.9	-5.2	72.7	-5.6	79.1	-6.4	69.0	-1.9	65.7	-4.4
X	69.8	-1.1	70.4	-2.4	74.8	-3.1	67.9	6.9	65.8	-1.4
XI	71.3	2.9	71.9	2.9	73.5	-2.9	69.2	3.8	70.3	10.4
XII	83.3	-6.1	85.4	-6.5	87.3	-7.1	74.1	-2.2	83.8	-5.4
<i>Average</i>	<i>72.5</i>	<i>-8.1</i>	<i>73.8</i>	<i>-8.4</i>	<i>77.8</i>	<i>-9.1</i>	<i>67.3</i>	<i>-5.3</i>	<i>68.9</i>	<i>-7.6</i>
2014 I	70.2	-0.4	68.6	-3.5	71.2	-1.9	70.8	3.9	66.1	-3.8
II	73.2	0.9	72.5	-2.4	74.1	1.5	67.4	4.9	66.3	-12.1
III	69.0	-1.2	68.2	-3.6	77.1	-0.9	67.5	1.4	54.4	-11.7
IV	74.1	7.1	74.6	5.4	81.3	9.2	66.8	6.9	62.8	-5.6
V	70.4	-3.6	70.9	-5.3	76.2	-8.1	62.3	-4.5	60.6	-7.5
*VI	73.8	3.8	73.7	2.2	80.9	1.5	68.0	1.4	61.5	-2.8

* Provisional data

Graph 1. Annual rates of change (%) of the volume index in retail trade ,
between June 2014 and June 2013



Graph 2. Monthly rates of change (%) of the volume index in retail trade ,
between June 2014 and May 2014.



METHODOLOGICAL NOTES

Generally	The Retail Trade Turnover Index with the current form is being released since January 2005. The Retail Trade Turnover Index is a continuation of the Retail Sales Value Index which had been compiled during the period 1963 to 2004.
Purpose of the index – definitions	The purpose of the Retail Trade Turnover Index is to illustrate the performance of the goods and services market. Turnover comprises the total amounts invoiced by the enterprise during the reference period which correspond to the resale of goods without any further transformation. The data collected each month refer to the sales effected (both retail and wholesale) excluding VAT but including other duties and taxes on the goods.
Legal basis	The compilation of the Retail Trade Turnover Index is governed by Council Regulation (EEC) No.1165/98 “concerning short-term statistics” and by the Regulation No.1893/2006 of the European Parliament and of the Council for the implementation of the new statistical classification NACE Rev.2
Reference period	Month
Base year	2010=100.0.
Revision	Pursuant to the provisions of Council Regulation No 1165/98 concerning short-term statistics. The index in question is updated every five (5) years in years ending in 0 or 5. The purpose of updating the Retail Trade Turnover Index is to adapt the index to the changes in the structure of retail trade.
Statistical classification	The EU (Eurostat) NACE Rev.2 statistical classification of economic activities is used in conformity with Regulation (EC) 1893/2006 of the Council and the European Parliament.
Geographical coverage	The Index covers the whole of the country with data from 50 Prefectures.
Coverage of economic activities	The index covers division 47 of NACE Rev 2 statistical classification of economic activities.
Statistical survey	In the framework of the survey carried out for the compilation of the Retail Trade Turnover Index (2010=100.0) it was decided to include 41.801 retail trade enterprises listed in the Business Register having an annual turnover (in 2010) equal to or higher than 200.000 euro. Out of these enterprises a random sample of 1.607 enterprises was selected.
Volume Index	Since 2005 onwards the Retail Trade Volume Index is also being compiled to measure changes in the volume of retail trade.
Calculating the indices	<p>The turnover index is calculated by the chaining method. First the moving based index is calculated by comparing the estimated turnover value for the current month with the corresponding value of the previous month. Afterwards the fixed-based index for the current month is calculated by multiplying the moving-based index by the fix-based index of the previous month.</p> <p>The indices are reduced to a typical month of equal duration. To this end the turnover estimates are multiplied by a special correction factor that is calculated by deviding the mean monthly number of working days in the given year by the number of the regular working days in the month under consideration.</p> <p>The Retail Trade Volume Index is calculated by deflating the Retail Trade Turnover Index using the Consumer Price Index (CPI) as deflator.</p>
Compiled index series	Since the revision of the Retail Trade Turnover and Volume Indices due to the implementation of the new classification NACE Rev 2. parallel time series for the indices including and not including fuels are provided.
Publication of data	The time series of Retail Trade Turnover and Volume Indices (2010=100.0) which include fuel have being published since 2000.
References	More information on the methodology concerning the compilation and calculation of the index and for the time series is available on the ELSTAT website (www.statistics.gr)