



HELLENIC REPUBLIC



MINISTRY OF ECONOMY AND FINANCE



**GENERAL SECRETARIAT OF
THE NATIONAL STATISTICAL SERVICE
OF GREECE**

Piraeus, 2 April 2009

PRESS RELEASE

Revised Turnover Index in Retail Trade^{1, 2, 3} January 2009

According to provisional results, the turnover index in retail trade as it was published until December 2008 except automotive fuel, in January 2009 as compared to January 2008, recorded a fall of 2,7 % at current prices (in nominal terms).

Accordingly the turnover index in retail trade including automotive fuel, in January 2009 as compared to January 2008, recorded a fall of 10.0% at current prices (in nominal terms).

The food sector turnover in retail trade in January 2009 as compared to January 2008 decreased by 0,3 % in nominal terms while the automotive fuel decreased by 50,5% and the non-food sector (except automotive fuel) decreased by 4,7 %.

¹ The turnover index in retail trade is released from January 1995 as first reference month revised and re-based in 2005=100,0. The revision of the index was considered necessary given that during the time period intervening between this and the previous revision new trade centers were created and significant changes in the structure of trade occurred. The revision of the turnover index in retail trade, with base year 2005=100,0, is done in the framework of the Short –Term Statistics (STS) Council Regulation (EC) no 1165/98 .

² At the same time the retail trade index adjusted to the new statistical classification of economic activities NACE Rev.2(Regulation 1893/2006). According to the new classification the automotive fuel included to the retail trade branch instead the special branch of “ Motor trade, maintenance and repair of motor vehicles and motorcycles “ of the previous classification NACE Rev.1 .

³ All figures in this release are based on data adjusted for working days.

More specifically, the turnover in retail trade, including automotive fuel, decrease by 10,0% at current prices in January 2009 as compared to January 2008, was derived by store category from the following:

- The supermarkets turnover decrease of 1,4 %
- The department stores turnover increase of 8,8 %
- The automotive fuel turnover decrease of 50,5%
- The food, beverages and tobacco turnover increase of 6,3%
- The pharmaceutical products, cosmetics turnover increase of 4,0%
- The clothing and footwear turnover increase of 15,6%
- The furniture, electrical equipment, household equipment turnover decrease of 13,9 %
- The books, stationery, other goods turnover decrease of 20,5%
- The retail sale not in stores turnover increase of 20,1%

Retail Trade Volume Index

The volume of retail trade (i.e. turnover in retail trade at constant prices) as it was published until December 2008 except automotive fuel, decreased by 5,8 % in January 2009, as compared to January 2008.

Accordingly, the retail trade volume index (i.e. turnover in retail trade at constant prices), including automotive fuel, in January 2009 as compared to January 2008, decreased by 10,8%.

The food sector retail trade in real terms, in January 2009 as compared to January 2008, decreased by 4,1 % while the automotive fuel decreased by 38,1% and the non-food sector (except automotive fuel) decreased by 7,5%.

More specifically, the turnover in retail trade, including automotive fuel, decrease by 10,8% at constant prices in January 2009 as compared to January 2008, was derived by store category from the following:

- The supermarkets volume of sales decrease of 4,9%
- The department stores volume of sales increase of 5,8%
- The automotive fuel volume of sales decrease of 38,1%
- The food, beverages and tobacco volume of sales increase of 2,3%

- The pharmaceutical products, cosmetics volume of sales increase of 2,1%
- The clothing and footwear volume of sales increase of 12,1%
- The furniture, electrical equipment, household equipment volume of sales decrease of 15,5%
- The books, stationery, other goods volume of sales decrease of 24,8%

TABLE 1

Annual rates of change of turnover index and volume index in retail trade

Retail Trade Business	2005=100,0					
	Turnover Index			Volume Index		
	Index January 2009*	Index January 2008	Annual rate (%)	Index January 2009*	Index January 2008	Annual rate (%)
Overall Index	109,3	121,5	-10,0	99,8	111,9	-10,8
Overall Index except automotive fuel**	108,2	111,3	-2,7	97,4	103,5	-5,8
I. Main sectors						
Food sector	115,1	115,5	-0,3	98,4	102,6	-4,1
Automotive fuel	96,7	195,5	-50,5	102,6	165,6	-38,1
Non-food sector (except automotive fuel)	103,2	108,2	-4,7	97,6	105,5	-7,5
II. Specialized store categories						
Supermarkets	117,6	119,3	-1,4	102,4	107,7	-4,9
Department stores	122,9	112,9	8,8	115,0	108,8	5,8
Automotive fuel	96,7	195,5	-50,5	102,6	165,6	-38,1
Food-beverages-tobacco	103,5	97,4	6,3	88,5	86,6	2,3
Pharmaceutical products, cosmetics	118,0	113,4	4,0	112,2	109,9	2,1
Clothing and footwear	123,3	106,6	15,6	116,3	103,7	12,1
Furniture, electrical equipment, household equipment	93,1	108,2	-13,9	91,3	108,0	-15,5
Books, stationery, other goods	85,3	107,3	-20,5	78,1	103,7	-24,8
Retail sale not in stores	114,6	95,4	20,1	:	:	:

* Provisional data

** Corresponds to the overall index in retail trade which was published by the NSSG until December 2008

: Not available data

TABLE 2
Monthly evolution of the turnover in retail trade at current prices

(2005=100,0)

Year-month	Overall Index		Overall Index except automotive fuel**		Food sector		Automotive fuel		Non –food sector except automotive fuel	
	Index	Annual rate (%)	Index	Annual rate (%)	Index	Annual rate (%)	Index	Annual rate (%)	Index	Annual rate (%)
2008 I	121.5	12.4	111.3	6.3	115.5	5.2	195.5	58.8	108.2	7.1
II	122.4	6.1	111.8	-0.5	117.1	2.3	199.4	57.5	108.0	-2.9
III	125.9	12.6	114.5	4.5	123.8	10.3	210.7	78.4	107.4	-0.4
IV	133.8	12.3	127.6	6.7	133.1	8.0	161.5	56.5	123.6	5.6
V	124.4	9.4	120.4	5.9	125.0	7.8	135.3	33.0	117.1	4.2
VI	125.9	7.8	122.8	4.6	125.2	5.7	128.9	29.1	121.3	3.8
VII	122.6	4.2	119.3	1.5	117.2	0.5	128.2	21.5	121.3	2.1
VIII	109.8	0.4	107.6	-1.0	122.0	4.3	109.3	6.3	96.6	-5.9
IX	118.7	2.4	117.8	1.4	122.3	2.3	107.3	5.5	114.6	0.7
X	131.0	10.0	121.3	3.8	123.7	7.2	179.6	45.5	119.8	1.2
XI	122.0	-0.3	117.4	-0.9	123.1	5.2	136.0	-2.4	113.3	-5.6
XII	142.9	-7.3	144.5	-4.0	147.5	-2.2	110.7	-33.1	142.6	-5.4
2009* I	109.3	-10.0	108.2	-2.7	115.1	-0.3	96.7	-50.5	103.2	-4.7

* Provisional data

** Corresponds to the overall index in retail trade which was published by the NSSG until December 2008

TABLE 3
Monthly evolution of the turnover in retail trade in real terms

(2005=100,0)

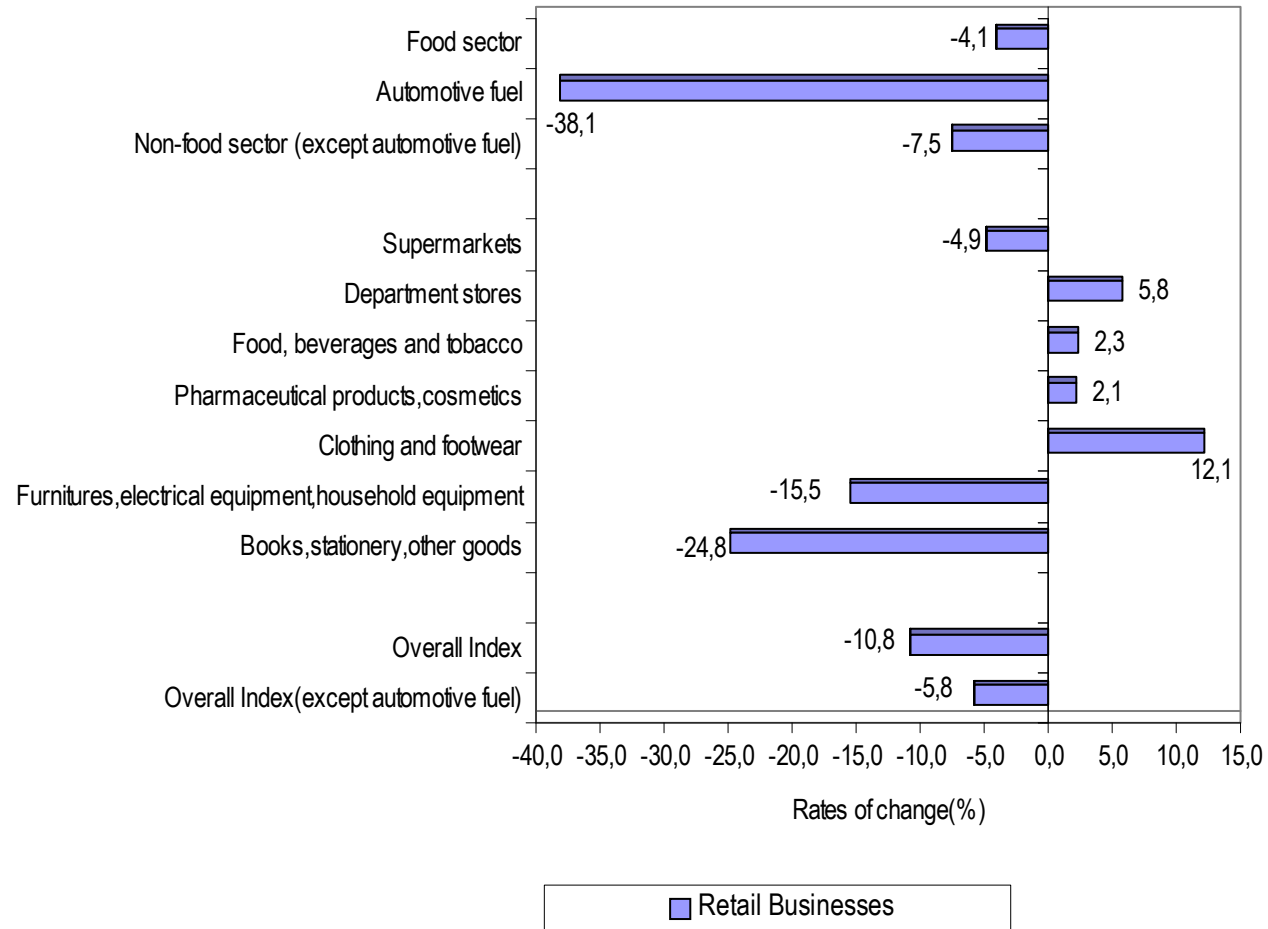
Year-month	Overall Index		Overall Index except automotive fuel**		Food sector		Automotive fuel		Non –food sector except automotive fuel	
	Index	Annual rate (%)	Index	Annual rate (%)	Index	Annual rate (%)	Index	Annual rate (%)	Index	Annual rate (%)
2008 I	111.9	8.2	103.5	3.8	102.6	0.6	165.6	32.5	105.5	7.0
II	114.7	0.9	106.1	-4.1	103.3	-3.0	168.1	32.6	110.4	-4.7
III	112.9	7.3	103.6	0.5	108.9	4.8	175.3	55.6	99.9	-3.1
IV	119.2	7.0	114.8	2.4	115.9	2.2	132.3	40.3	114.9	2.7
V	109.9	3.9	108.0	1.4	109.1	1.8	104.1	17.5	108.0	1.3
VI	111.7	2.4	111.3	0.7	111.5	0.4	95.5	10.0	111.9	0.9
VII	111.1	-0.8	110.6	-2.1	105.3	-3.8	95.3	3.3	116.3	-0.7
VIII	101.8	-4.0	101.8	-4.2	109.4	0.6	84.6	-8.7	96.6	-8.3
IX	105.8	-1.8	106.5	-1.6	108.8	-1.1	84.1	-7.8	105.5	-2.0
X	116.6	6.5	108.4	0.5	108.1	3.1	155.6	40.9	109.5	-1.4
XI	108.9	-2.6	104.2	-4.5	106.2	0.1	131.1	9.5	103.5	-8.1
XII	129.0	-8.4	128.4	-7.1	127.9	-5.9	118.3	-17.6	130.1	-7.8
2009 *I	99.8	-10.8	97.4	-5.8	98.4	-4.1	102.6	-38.1	97.6	-7.5

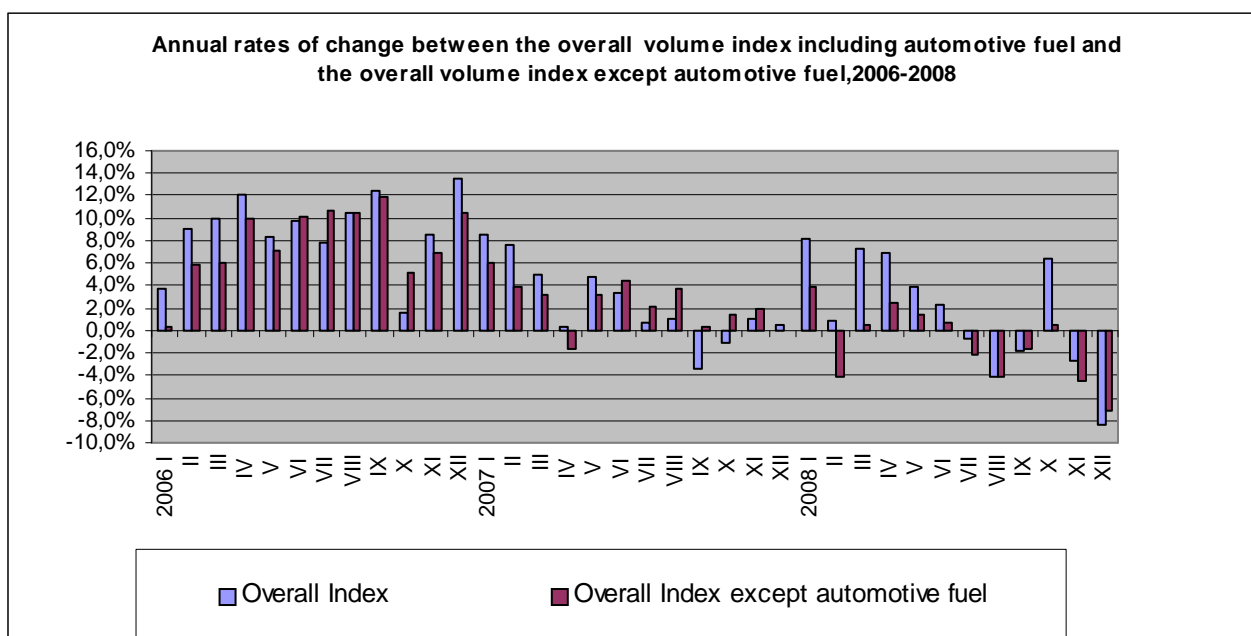
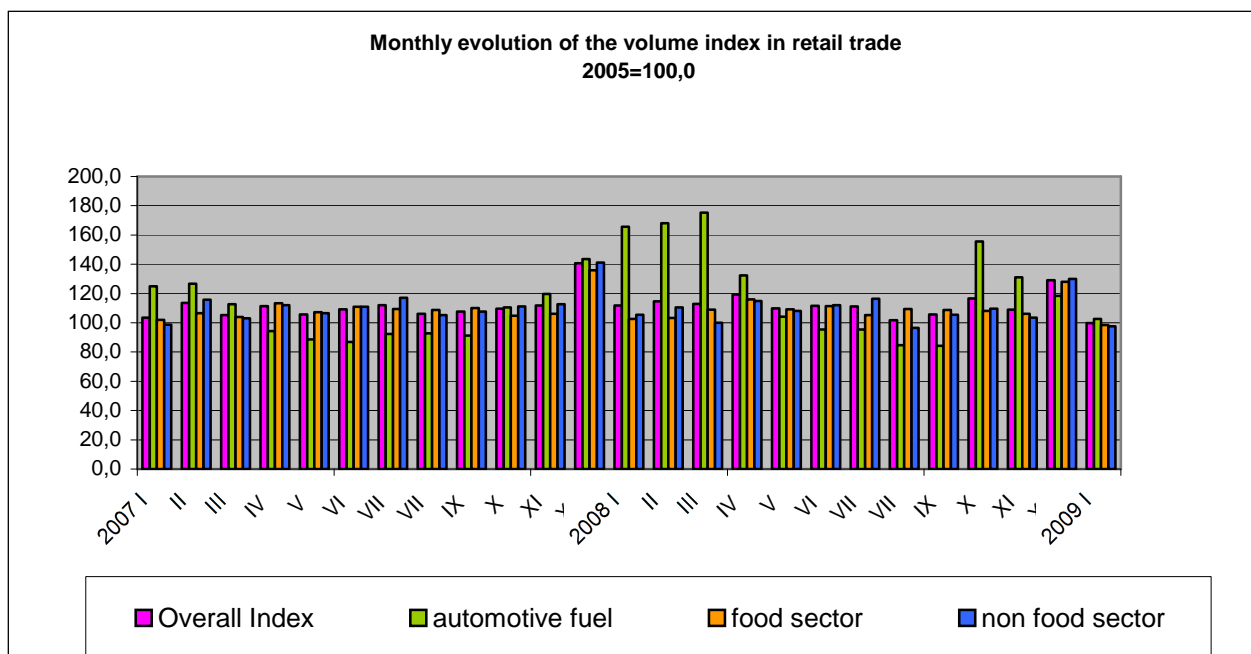
* Provisional data

** Corresponds to the overall index in retail trade which was published by the NSSG until December 2008

DIAGRAMS

Annual rates of change (%) of the volume index in retail trade , between January 2009 and January 2008.





For further information on data:

Vasiliki Benaki, Andriana Dafni
Economic and Short-Term Indicators Division
Tel: 0030 210 4852127, 0030 210 4852717
Fax: 0030 210 4852729
e-mail : vasbenaki@statistics.gr