



HELLENIC REPUBLIC



HELLENIC STATISTICAL AUTHORITY

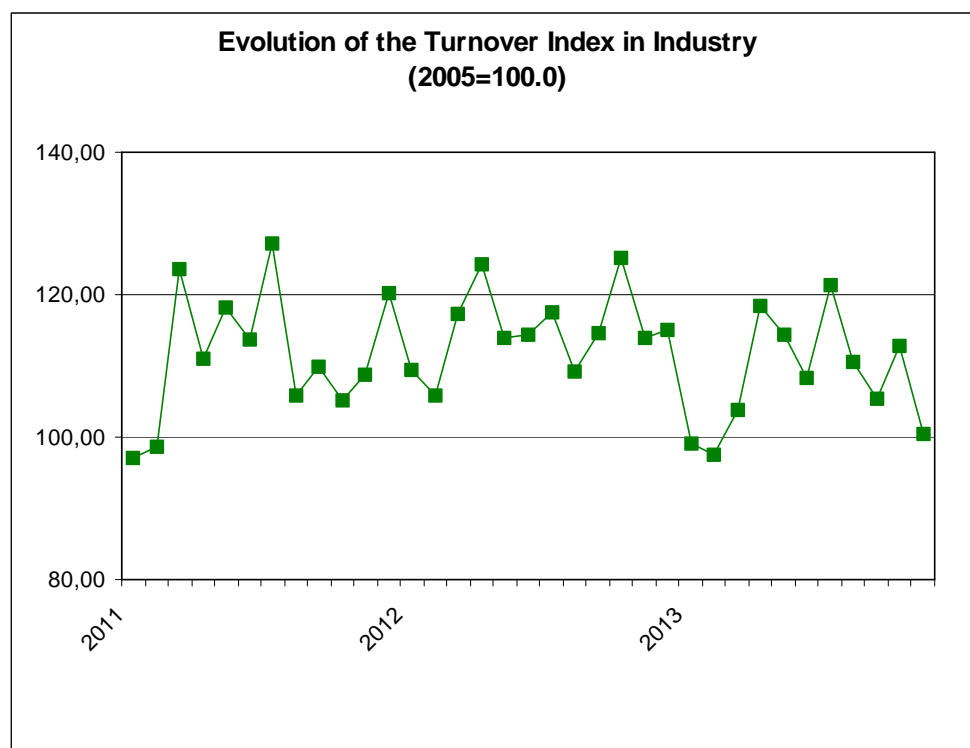
Piraeus, 20 January 2014

## PRESS RELEASE

### TURNOVER INDEX IN INDUSTRY: November 2013

The Turnover Index in Industry (both domestic and non-domestic market) in November 2013 compared with November 2012 recorded a decline of 11.7%. In November 2012, the annual rate of change of the Turnover Index in Industry was 4.5 %.

The average Turnover Index in Industry for the 12-month period from December 2012 to November 2013, as compared to the 12-month period from December 2011 to November 2012, decreased by 5.7%. In November 2012, the corresponding average rate of change of the Turnover Index in Industry was 3.6%.



Information:

Economic and Short-Term  
Indicators Division

Production Indices Section

Diamantaki Aikaterini  
Karathanos Panagiotis  
Tel: 0030 213 1352122  
Fax: 0030 213 1352738

The decrease of the Turnover Index in Industry by 11.7% in November 2013, compared with November 2012, was due to the annual changes as following:

- by Industrial Sections

- Mining and quarrying turnover increased by 2.7%.
- Manufacturing turnover decreased by 11.9%.

In addition, the decrease of the Turnover Index in Industry by 11.7% in November 2013, compared with November 2012, was due to the annual changes of the indices of the markets as following:

- The Turnover Index in Industry for the domestic market decreased by 5.0%.
- The Turnover Index in Industry for the non-domestic market decreased by 19.2%.

The decrease of the Turnover Index in Industry for the non-domestic market by 19.2% in November 2013, compared with November 2012, was due to the annual changes as following:

- The Turnover Index in Industry for the Eurozone countries decreased by 27.5%.
- The Turnover Index in Industry for the non-Eurozone countries decreased by 14.2%.

**Table 1: Annual rates of change of the Turnover Index in Industry (Total Market)**

**Base year: 2005=100.0**

Branch code	Branch name	November			Rate of change (%)	
		2013*	2012	2011	2013/2012	2012/2011
	<b>OVERALL INDEX</b>	100.5	113.8	109.0	-11.7	4.5
<b>B</b>	<b>MINING AND QUARRYING</b>	97.1	94.5	91.3	2.7	3.6
<b>05</b>	Mining of coal and lignite	159.9	79.1	173.2	102.0	-54.3
<b>06</b>	Extraction of crude petroleum and natural gas	0.0	0.0	0.0	0.0	0.0
<b>07</b>	Mining of metal ores	67.4	68.6	91.2	-1.8	-24.8
<b>08</b>	Other mining and quarrying products	106.0	107.0	93.0	-1.0	15.1
<b>C</b>	<b>MANUFACTURING</b>	98.9	112.3	107.5	-11.9	4.5
<b>10</b>	Food	103.7	107.1	109.3	-3.2	-2.0
<b>11</b>	Beverages	54.5	56.5	65.3	-3.5	-13.6
<b>12</b>	Tobacco products	74.9	75.8	82.0	-1.2	-7.6
<b>13</b>	Textiles	34.3	37.0	38.7	-7.2	-4.5
<b>14</b>	Wearing apparel	41.3	46.8	50.5	-11.7	-7.4
<b>15</b>	Leather and related products	35.4	32.1	46.2	10.2	-30.4
<b>16</b>	Wood and cork	26.7	40.0	50.6	-33.1	-21.1
<b>17</b>	Paper and paper products	101.4	101.6	111.1	-0.2	-8.6
<b>18</b>	Printing and recording services	48.1	43.1	54.4	11.4	-20.7
<b>19</b>	Coke and refined petroleum products	164.1	201.2	162.8	-18.4	23.6
<b>20</b>	Chemicals and chemical products	77.7	81.5	81.4	-4.7	0.2
<b>21</b>	Basic pharmaceutical products and pharmaceutical preparations	146.4	153.1	146.2	-4.4	4.8
<b>22</b>	Rubber and plastic products	94.1	97.3	97.1	-3.2	0.2
<b>23</b>	Other non-metallic mineral products	37.1	37.3	44.3	-0.5	-15.7
<b>24</b>	Basic metals	89.7	100.5	127.8	-10.7	-21.3
<b>25</b>	Fabricated metal products	58.9	59.9	77.8	-1.6	-23.1
<b>26</b>	Computers, electronic and optical products	48.5	32.8	32.0	47.8	2.4
<b>27</b>	Electrical equipment	75.6	93.9	84.7	-19.5	10.8
<b>28</b>	Machinery and equipment n.e.c.	63.7	86.4	60.3	-26.3	43.2
<b>29</b>	Motor vehicles, trailers and semi-trailers	38.6	48.9	45.0	-21.1	8.7
<b>30</b>	Other transport equipment	25.4	28.1	47.7	-9.6	-41.1
<b>31</b>	Furniture	38.2	38.4	50.3	-0.6	-23.6
<b>32</b>	Other manufactured goods	67.5	65.7	68.6	2.8	-4.2
<b>33</b>	Repair and installation services of machinery and equipment	50.3	54.2	63.1	-7.2	-14.0
	<b>MAIN INDUSTRIAL GROUPINGS</b>					
<b>1</b>	Energy	163.6	200.3	162.3	-18.3	23.4
<b>2</b>	Intermediate goods	79.3	85.5	94.9	-7.2	-10.0
<b>3</b>	Capital goods	45.0	49.4	58.9	-8.9	-16.1
<b>4</b>	Consumer Durables	40.6	46.5	53.4	-12.6	-13.0
<b>5</b>	Consumer Non-Durables	82.3	84.7	88.3	-2.8	-4.1

\* Provisional data

Note:

1. The indices are calculated with infinite decimal figures and are rounded up to one decimal figure when published.
2. Percentage changes are calculated on the basis of indices with infinite decimal figures and are rounded up to one decimal figure when published.

**Table 2: Annual rates of change of the Turnover Index in Industry for the Domestic Market**

**Base year: 2005=100.0**

Branch code	Branch name	November			Rate of change (%)	
		2013*	2012	2011	2013/2012	2012/2011
	<b>OVERALL INDEX</b>	72.7	76.5	95.2	-5.0	-19.7
<b>B</b>	<b>MINING AND QUARRYING</b>	64.3	58.1	68.3	10.7	-15.0
<b>05</b>	Mining of coal and lignite	159.9	79.1	173.2	102.0	-54.3
<b>06</b>	Extraction of crude petroleum and natural gas	0.0	0.0	0.0	0.0	0.0
<b>07</b>	Mining of metal ores	110.0	105.9	121.9	3.9	-13.1
<b>08</b>	Other mining and quarrying products	56.1	55.4	58.6	1.1	-5.4
<b>C</b>	<b>MANUFACTURING</b>	71.7	75.6	94.2	-5.2	-19.7
<b>10</b>	Food	99.7	102.3	106.5	-2.5	-3.9
<b>11</b>	Beverages	51.4	52.2	62.6	-1.6	-16.6
<b>12</b>	Tobacco products	45.8	46.0	52.7	-0.5	-12.6
<b>13</b>	Textiles	29.4	29.0	32.2	1.2	-9.8
<b>14</b>	Wearing apparel	32.7	32.9	45.8	-0.7	-28.1
<b>15</b>	Leather and related products	38.9	35.5	41.2	9.7	-13.8
<b>16</b>	Wood and cork	20.2	33.7	44.6	-40.1	-24.5
<b>17</b>	Paper and paper products	96.2	97.5	106.5	-1.4	-8.4
<b>18</b>	Printing and recording services	45.0	41.8	53.2	7.7	-21.4
<b>19</b>	Coke and refined petroleum products	105.7	107.5	161.1	-1.7	-33.3
<b>20</b>	Chemicals and chemical products	56.4	59.5	58.0	-5.2	2.6
<b>21</b>	Basic pharmaceutical products and pharmaceutical preparations	92.3	105.4	100.9	-12.4	4.5
<b>22</b>	Rubber and plastic products	65.7	70.0	76.7	-6.1	-8.8
<b>23</b>	Other non-metallic mineral products	29.2	29.0	40.9	0.7	-29.2
<b>24</b>	Basic metals	51.4	66.5	66.0	-22.7	0.8
<b>25</b>	Fabricated metal products	36.7	41.9	57.2	-12.4	-26.7
<b>26</b>	Computers, electronic and optical products	7.3	12.8	12.8	-43.2	0.4
<b>27</b>	Electrical equipment	48.8	72.2	63.5	-32.4	13.7
<b>28</b>	Machinery and equipment n.e.c.	40.8	54.1	44.3	-24.5	22.0
<b>29</b>	Motor vehicles, trailers and semi-trailers	20.0	30.8	31.7	-35.1	-3.0
<b>30</b>	Other transport equipment	1.4	3.4	11.1	-58.8	-69.3
<b>31</b>	Furniture	30.3	33.2	47.6	-8.7	-30.3
<b>32</b>	Other manufactured goods	41.8	44.8	52.3	-6.6	-14.4
<b>33</b>	Repair and installation services of machinery and equipment	50.3	54.2	63.1	-7.2	-14.0
	<b>MAIN INDUSTRIAL GROUPINGS</b>					
<b>1</b>	Energy	105.5	107.0	160.5	-1.4	-33.4
<b>2</b>	Intermediate goods	57.3	64.2	68.1	-10.7	-5.7
<b>3</b>	Capital goods	30.8	36.1	44.9	-14.8	-19.5
<b>4</b>	Consumer Durables	31.0	35.8	49.1	-13.5	-27.0
<b>5</b>	Consumer Non-Durables	72.5	74.4	80.4	-2.5	-7.5

\* Provisional data

Note:

1. The indices are calculated with infinite decimal figures and are rounded up to one decimal figure when published.
2. Percentage changes are calculated on the basis of indices with infinite decimal figures and are rounded up to one decimal figure when published.

**Table 3: Annual rates of change of the Turnover Index in Industry for the Non - Domestic Market**

**Base year: 2005=100.0**

Branch code	Branch name	November			Rate of change (%)	
		2013*	2012	2011	2013/2012	2012/2011
	<b>OVERALL INDEX</b>	184.9	229.0	147.0	-19.2	55.7
<b>B</b>	<b>MINING AND QUARRYING</b>	140.8	147.6	123.4	-4.6	19.6
<b>05</b>	Mining of coal and lignite	0.0	0.0	0.0	0.0	0.0
<b>06</b>	Extraction of crude petroleum and natural gas	0.0	0.0	0.0	0.0	0.0
<b>07</b>	Mining of metal ores	29.2	35.2	63.7	-17.2	-44.8
<b>08</b>	Other mining and quarrying products	171.9	178.9	140.0	-3.9	27.8
<b>C</b>	<b>MANUFACTURING</b>	181.8	225.7	144.3	-19.5	56.4
<b>10</b>	Food	121.2	127.2	121.5	-4.7	4.7
<b>11</b>	Beverages	99.2	115.7	105.1	-14.2	10.0
<b>12</b>	Tobacco products	152.1	154.8	159.9	-1.7	-3.2
<b>13</b>	Textiles	39.9	46.5	46.9	-14.2	-0.9
<b>14</b>	Wearing apparel	49.7	59.8	55.7	-16.9	7.4
<b>15</b>	Leather and related products	4.0	2.2	90.8	81.4	-97.6
<b>16</b>	Wood and cork	70.8	82.1	91.1	-13.8	-9.9
<b>17</b>	Paper and paper products	145.4	134.7	148.6	8.0	-9.4
<b>18</b>	Printing and recording services	336.1	169.9	173.2	97.9	-1.9
<b>19</b>	Coke and refined petroleum products	353.8	505.6	168.3	-30.0	200.4
<b>20</b>	Chemicals and chemical products	127.5	133.3	135.7	-4.3	-1.8
<b>21</b>	Basic pharmaceutical products and pharmaceutical preparations	417.6	392.3	373.2	6.4	5.1
<b>22</b>	Rubber and plastic products	151.2	151.9	138.7	-0.4	9.5
<b>23</b>	Other non-metallic mineral products	88.7	93.0	62.6	-4.7	48.7
<b>24</b>	Basic metals	128.7	135.2	190.0	-4.8	-28.8
<b>25</b>	Fabricated metal products	145.4	129.6	153.7	12.2	-15.7
<b>26</b>	Computers, electronic and optical products	74.2	46.1	42.8	61.1	7.7
<b>27</b>	Electrical equipment	105.6	117.2	107.8	-9.9	8.8
<b>28</b>	Machinery and equipment n.e.c.	91.8	128.8	79.7	-28.8	61.6
<b>29</b>	Motor vehicles, trailers and semi-trailers	146.2	144.9	108.1	0.9	34.1
<b>30</b>	Other transport equipment	46.3	56.5	63.7	-17.9	-11.3
<b>31</b>	Furniture	348.5	198.8	119.3	75.3	66.6
<b>32</b>	Other manufactured goods	157.0	146.8	140.7	7.0	4.4
<b>33</b>	Repair and installation services of machinery and equipment	0.0	0.0	0.0	0.0	0.0
	<b>MAIN INDUSTRIAL GROUPINGS</b>					
<b>1</b>	Energy	353.8	505.6	168.3	-30.0	200.4
<b>2</b>	Intermediate goods	124.1	129.1	150.4	-3.9	-14.1
<b>3</b>	Capital goods	91.6	92.1	92.1	-0.5	0.0
<b>4</b>	Consumer Durables	77.4	80.1	64.3	-3.3	24.5
<b>5</b>	Consumer Non-Durables	119.0	123.0	118.7	-3.3	3.7

\* Provisional data

Note:

1. The indices are calculated with infinite decimal figures and are rounded up to one decimal figure when published.
2. Percentage changes are calculated on the basis of indices with infinite decimal figures and are rounded up to one decimal figure when published.

**Table 4: Annual rates of change of the Turnover Index in Industry for the Eurozone Countries**

**Base year: 2005=100.0**

Branch code	Branch name	November			Rate of change (%)	
		2013*	2012	2011	2013/2012	2012/2011
	<b>OVERALL INDEX</b>	140.6	193.9	150.2	-27.5	29.1
	<b>INDUSTRIAL SECTIONS</b>					
B	MINING AND QUARRYING	99.5	126.4	129.9	-21.3	-2.7
C	MANUFACTURING	137.9	190.4	146.6	-27.6	29.9
	<b>MAIN INDUSTRIAL GROUPINGS</b>					
1	Energy	987.3	3208.5	703.7	-69.2	356.0
2	Intermediate goods	124.5	143.6	159.1	-13.4	-9.7
3	Capital goods	40.7	44.1	59.7	-7.8	-26.2
4	Consumer Durables	360.9	190.2	99.8	89.7	90.6
5	Consumer Non-Durables	99.3	104.3	112.1	-4.8	-6.9

\* Provisional data

**Table 5: Annual rates of change of the Turnover Index in Industry for the Non - Eurozone Countries**

**Base year: 2005=100.0**

Branch code	Branch name	November			Rate of change (%)	
		2013*	2012	2011	2013/2012	2012/2011
	<b>OVERALL INDEX</b>	218.2	254.2	147.0	-14.2	72.9
	<b>INDUSTRIAL SECTIONS</b>					
B	MINING AND QUARRYING	178.0	167.1	118.4	6.5	41.2
C	MANUFACTURING	214.9	251.1	144.8	-14.4	73.4
	<b>MAIN INDUSTRIAL GROUPINGS</b>					
1	Energy	334.8	424.4	152.2	-21.1	178.8
2	Intermediate goods	126.3	124.4	148.0	1.5	-15.9
3	Capital goods	156.7	152.7	132.0	2.6	15.7
4	Consumer Durables	63.4	62.9	56.4	0.9	11.5
5	Consumer Non-Durables	142.6	141.0	121.8	1.1	15.7

\* Provisional data

*Note:*

1. The indices are calculated with infinite decimal figures and are rounded up to one decimal figure when published.
2. Percentage changes are calculated on the basis of indices with infinite decimal figures and are rounded up to one decimal figure when published.

**Table 6: Evolution of the Turnover Index in Industry (Total Market)****Base year: 2005=100.0**

Year-month	Overall Index (Total Market)		Turnover Index in Industry for the Domestic Market		Turnover Index in Industry for the Non - Domestic Market	
	Index	Annual rate of change (%)	Index	Annual rate of change (%)	Index	Annual rate of change (%)
2012 XI	113.8	4.5	76.5	-19.7	229.0	55.7
XII	115.0	-4.5	77.3	-26.1	231.9	40.0
2013 I	99.0	-9.6	69.3	-21.4	191.4	9.2
II	97.5	-7.9	71.9	-15.3	176.0	3.9
III	103.8	-11.6	71.6	-22.0	202.6	3.9
IV	118.5	-4.6	90.5	-8.8	204.4	1.6
V	114.3	0.4	74.6	-13.3	237.4	19.7
VI	108.3	-5.4	81.7	-8.1	188.9	-1.6
VII	121.3	3.2	90.4	-5.3	215.2	17.5
VIII	110.5	1.2	78.4	-9.2	209.8	16.9
XI	105.4	-8.1	78.1	-6.4	187.4	-11.0
X	112.8	-9.9	85.2	-6.0	195.8	-15.2
XI*	100.5	-11.7	72.7	-5.0	184.9	-19.2

\*Provisional data

**Table 7: Evolution of the Turnover Index in Industry for the Non – Domestic Market****Base year: 2005=100.0**

Year-month	Overall Index (Non - Domestic Market)		Turnover Index in Industry for Eurozone Countries		Turnover Index in Industry for Non - Eurozone Countries	
	Index	Annual rate of change (%)	Index	Annual rate of change (%)	Index	Annual rate of change (%)
2012 XI	229.0	55.7	193.9	29.1	254.2	72.9
XII	231.9	40.0	137.6	-12.7	293.4	67.2
2013 I	191.4	9.2	141.7	13.0	221.5	8.1
II	176.0	3.9	135.4	3.0	202.4	3.2
III	202.6	3.9	146.0	-13.2	238.6	10.2
IV	204.4	1.6	181.6	30.4	219.7	-8.8
V	237.4	19.7	195.2	13.7	265.1	22.3
VI	188.9	-1.6	153.7	-3.7	213.1	-0.5
VII	215.2	17.5	158.5	8.1	252.1	22.5
VIII	209.8	16.9	140.8	12.7	254.2	19.6
XI	187.4	-11.0	144.5	-2.7	214.6	-14.6
X	195.8	-15.2	158.9	-7.1	220.9	-18.2
XI*	184.9	-19.2	140.6	-27.5	218.2	-14.2

\*Provisional data

Note: 1. The indices are calculated with infinite decimal figures and are rounded up to one decimal figure when published.  
2. Percentage changes are calculated on the basis of indices with infinite decimal figures and are rounded up to one decimal figure when published.

**Table 8: Average indices and rates of change (%) of the 12-month periods of Turnover Index in Industry (Total Market)**

**Base year: 2005=100.0**

Branch code	Branch name	Average Indices of 12-month periods			Rate of change (%) 2013/2012	Rate of change (%) 2012/2011
		Dec. 2012- Nov. 2013*	Dec.2011- Nov. 2012	Dec. 2010- Nov. 2011		
	<b>OVERALL INDEX</b>	108.9	115.5	111.5	-5.7	3.6
<b>B</b>	<b>MINING AND QUARRYING</b>	94.9	87.4	96.8	8.6	-9.8
<b>05</b>	Mining of coal and lignite	88.3	57.0	139.5	54.9	-59.2
<b>06</b>	Extraction of crude petroleum and natural gas	192.3	166.2	172.6	15.8	-3.7
<b>07</b>	Mining of metal ores	76.3	78.8	84.3	-3.2	-6.5
<b>08</b>	Other mining and quarrying products	91.9	85.2	91.4	7.9	-6.8
<b>C</b>	<b>MANUFACTURING</b>	107.4	114.1	110.0	-5.9	3.8
<b>10</b>	Food	103.1	106.7	108.2	-3.4	-1.4
<b>11</b>	Beverages	81.8	88.6	97.7	-7.7	-9.4
<b>12</b>	Tobacco products	73.9	75.3	79.6	-1.9	-5.4
<b>13</b>	Textiles	32.6	34.1	44.3	-4.4	-22.9
<b>14</b>	Wearing apparel	40.6	41.3	49.5	-1.6	-16.6
<b>15</b>	Leather and related products	25.6	26.1	49.9	-1.8	-47.7
<b>16</b>	Wood and cork	26.3	37.0	47.5	-29.0	-22.1
<b>17</b>	Paper and paper products	99.5	101.7	110.8	-2.1	-8.3
<b>18</b>	Printing and recording services	44.2	47.8	60.6	-7.6	-21.2
<b>19</b>	Coke and refined petroleum products	192.8	203.4	168.3	-5.2	20.9
<b>20</b>	Chemicals and chemical products	85.8	85.3	93.7	0.6	-9.0
<b>21</b>	Basic pharmaceutical products and pharmaceutical preparations	137.4	127.6	128.4	7.7	-0.6
<b>22</b>	Rubber and plastic products	94.8	95.0	99.2	-0.2	-4.2
<b>23</b>	Other non-metallic mineral products	37.4	38.6	49.7	-3.3	-22.3
<b>24</b>	Basic metals	88.7	102.9	115.5	-13.8	-10.9
<b>25</b>	Fabricated metal products	63.3	74.5	82.7	-15.0	-9.9
<b>26</b>	Computers, electronic and optical products	37.5	33.9	34.5	10.6	-1.8
<b>27</b>	Electrical equipment	75.9	92.9	85.9	-18.4	8.2
<b>28</b>	Machinery and equipment n.e.c.	67.7	73.3	85.8	-7.7	-14.5
<b>29</b>	Motor vehicles, trailers and semi-trailers	39.4	43.9	60.0	-10.2	-26.8
<b>30</b>	Other transport equipment	20.7	25.6	42.3	-19.4	-39.4
<b>31</b>	Furniture	32.4	40.9	59.7	-21.0	-31.4
<b>32</b>	Other manufactured goods	65.0	65.1	72.8	-0.1	-10.6
<b>33</b>	Repair and installation services of machinery and equipment	39.4	46.7	53.1	-15.5	-12.0
	<b>MAIN INDUSTRIAL GROUPINGS</b>					
<b>1</b>	Energy	192.5	202.9	168.2	-5.1	20.6
<b>2</b>	Intermediate goods	79.4	85.2	93.9	-6.7	-9.3
<b>3</b>	Capital goods	40.9	48.6	58.9	-15.8	-17.5
<b>4</b>	Consumer Durables	39.5	48.3	58.7	-18.1	-17.8
<b>5</b>	Consumer Non-Durables	85.4	88.6	92.8	-3.6	-4.6

\*Provisional data

Note: 1. The indices are calculated with infinite decimal figures and are rounded up to one decimal figure when published.  
2. Percentage changes are calculated on the basis of indices with infinite decimal figures and are rounded up to one decimal figure when published.



## METHODOLOGICAL NOTES

<b>Generally</b>	The Turnover Index is being compiled since 2006.
<b>Purpose of the index</b>	The purpose of this index is to measure the monthly activity of the industrial sector in terms of value. Turnover comprises the totals invoiced (without VAT) by the observation units during the reference period and corresponds to the market sales of goods or services supplied to third parties. The purposes and the characteristics of the Turnover Index apply, as well, to the indices for the distinction between domestic and non-domestic turnover.
<b>Legal basis</b>	The compilation and publication of the Turnover Index is based on the framework of requirements of the Council Regulation (EC) No 1165/98 concerning short-term statistics (STS-R), as well as the amendment Regulation (EC) No 1158/05 of the European Parliament and Council, amending the Council Regulation (EC) No 1165/98. Furthermore, this index is governed by the Regulation (EEC) No.1893/2006 of the European Parliament and of the Council, by the Commission Regulation (EEC) No.656/2007 and by the Regulation (EEC) No.451/2008 of the Council.
<b>Reference period</b>	Month
<b>Base year</b>	2005=100.0.
<b>Revision</b>	The last revision of the Turnover Index in Industry with base year 2005=100.0 is done in the framework of the Short – Term Statistics (STS) Council Regulation (EC) No 1165/98 concerning short-term statistics. According to this regulation the index in question is updated every five years, in years ending in 0 or 5.
<b>Statistical classifications</b>	At the level of categories of economic activities the new Eurostat classification NACE Rev. 2 was used (Regulation 1893/2006), while at the level of main industrial groups, the allocation of two-digit and three-digit NACE Rev. 2 headings to categories of aggregate classification was used, in accordance with the Commission Regulation 656/2007. At product level, the new Eurostat classification CPA 2008 was used, according to the Council Regulation 451/2008.
<b>Geographical coverage</b>	The Index covers the whole country.
<b>Coverage of economic activities</b>	The Turnover Index in Industry covers the whole country and is compiled for all activities listed in Sections C (mining and quarrying) and D (manufacturing) of the NACE Rev.2 classification.
<b>Computation of the Index</b>	The Turnover Index in Industry is a fixed base index. This index is calculated initially at the four-digit level of economic activity and subsequently, with the implementation of appropriate weighting coefficients, the index is calculated at higher levels (three-level, two-level and one-level of economic activity) or at the level of Main Industrial Groupings (MIGs).
<b>Publication of data</b>	The Turnover Index with base year 2005=100.0 is being released since April 2009 with January 2009 as first reference month. Data with base year 2005=100.0 are available from January 2000 onwards.
<b>References</b>	More information about the methodology concerning the compilation and calculation of the index and for the time series is available on the Hellenic Statistical Authority (ELSTAT) website ( <a href="http://www.statistics.gr">www.statistics.gr</a> ).