



HELLENIC REPUBLIC



HELLENIC STATISTICAL AUTHORITY

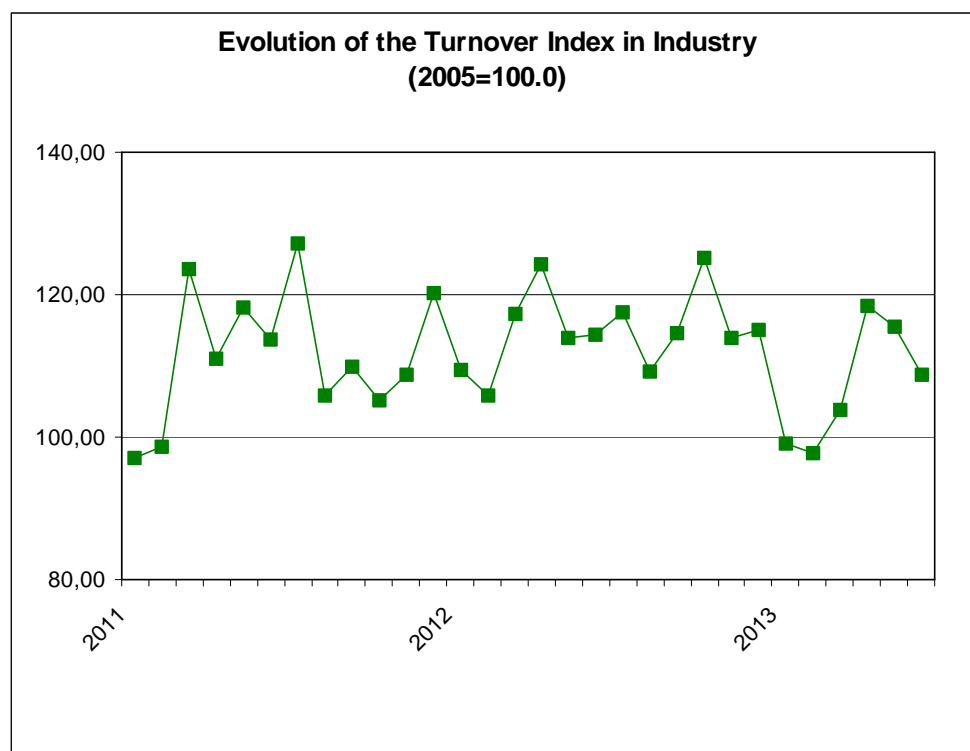
Piraeus, 19 August 2013

## PRESS RELEASE

### TURNOVER INDEX IN INDUSTRY: June 2013

The Turnover Index in Industry (both domestic and non-domestic market) in June 2013 compared with June 2012 recorded a decline of 5.0%. In June 2012, the annual rate of change of the Turnover Index in Industry was 0.6%.

The average Turnover Index in Industry for the 12-month period from July 2012 to June 2013, as compared to the 12-month period from July 2011 to June 2012, decreased by 1.8%. In June 2012, the corresponding average rate of change of the Turnover Index in Industry was 4.6%.



Information:

Economic and Short-Term  
Indicators Division

Production Indices Section

Diamantaki Aikaterini  
Karathanos Panagiotis  
Tel: 0030 213 1352122  
Fax: 0030 213 1352738

The decrease of the Turnover Index in Industry by 5.0% in June 2013, compared with June 2012, was due to the annual changes as following:

- by Industrial Sections

- Mining and quarrying turnover increased by 30.7%.
- Manufacturing turnover decreased by 5.5%.

In addition, the decrease of the Turnover Index in Industry by 5.0% in June 2013, compared with June 2012, was due to the annual changes of the indices of the markets as following:

- The Turnover Index in Industry for the domestic market decreased by 7.5%.
- The Turnover Index in Industry for the non-domestic market decreased by 1.1%.

The decrease of the Turnover Index in Industry for the non-domestic market by 1.1% in June 2013, compared with June 2012, was due to the annual changes as following:

- The Turnover Index in Industry for the Eurozone countries decreased by 1.6%.
- The Turnover Index in Industry for the non-Eurozone countries decreased by 0.6%.

**Table 1: Annual rates of change of the Turnover Index in Industry (Total Market)**

**Base year: 2005=100.0**

Branch code	Branch name	June			Rate of change (%)	
		2013*	2012	2011	2013/2012	2012/2011
	<b>OVERALL INDEX</b>	108.8	114.5	113.9	-5.0	0.6
<b>B</b>	<b>MINING AND QUARRYING</b>	132.4	101.3	88.0	30.7	15.1
<b>05</b>	Mining of coal and lignite	34.5	0.1	48.2	51519.1	-99.9
<b>06</b>	Extraction of crude petroleum and natural gas	937.3	371.4	0.0	152.4	-
<b>07</b>	Mining of metal ores	88.5	73.7	71.2	20.2	3.4
<b>08</b>	Other mining and quarrying products	89.7	93.4	99.7	-4.0	-6.4
<b>C</b>	<b>MANUFACTURING</b>	106.7	112.9	112.4	-5.5	0.4
<b>10</b>	Food	103.4	110.7	112.2	-6.5	-1.4
<b>11</b>	Beverages	125.0	131.5	138.6	-4.9	-5.1
<b>12</b>	Tobacco products	74.2	78.4	86.2	-5.4	-9.1
<b>13</b>	Textiles	34.0	35.0	47.2	-2.9	-25.8
<b>14</b>	Wearing apparel	35.5	40.4	45.7	-12.1	-11.6
<b>15</b>	Leather and related products	17.5	11.0	43.2	58.8	-74.6
<b>16</b>	Wood and cork	27.7	41.0	53.1	-32.4	-22.8
<b>17</b>	Paper and paper products	101.7	106.0	118.0	-4.0	-10.2
<b>18</b>	Printing and recording services	43.8	49.2	61.3	-10.9	-19.8
<b>19</b>	Coke and refined petroleum products	178.2	178.1	161.7	0.0	10.2
<b>20</b>	Chemicals and chemical products	87.1	89.1	95.6	-2.3	-6.8
<b>21</b>	Basic pharmaceutical products and pharmaceutical preparations	139.5	130.3	120.1	7.1	8.5
<b>22</b>	Rubber and plastic products	98.5	106.7	110.8	-7.7	-3.6
<b>23</b>	Other non-metallic mineral products	42.4	43.6	56.8	-2.8	-23.2
<b>24</b>	Basic metals	88.8	109.6	118.3	-19.1	-7.3
<b>25</b>	Fabricated metal products	68.2	84.3	92.8	-19.1	-9.2
<b>26</b>	Computers, electronic and optical products	27.5	40.9	39.8	-32.8	2.9
<b>27</b>	Electrical equipment	98.3	110.2	84.8	-10.8	30.0
<b>28</b>	Machinery and equipment n. e. c.	71.6	97.8	102.1	-26.8	-4.2
<b>29</b>	Motor vehicles, trailers and semi-trailers	43.1	46.8	53.3	-7.9	-12.2
<b>30</b>	Other transport equipment	18.9	20.8	38.3	-9.2	-45.6
<b>31</b>	Furniture	32.6	43.8	65.4	-25.6	-33.0
<b>32</b>	Other manufactured goods	61.6	67.7	77.3	-9.1	-12.4
<b>33</b>	Repair and installation services of machinery and equipment	44.1	50.7	51.7	-13.1	-1.8
	<b>MAIN INDUSTRIAL GROUPINGS</b>					
<b>1</b>	Energy	180.2	178.3	160.9	1.1	10.8
<b>2</b>	Intermediate goods	82.3	91.5	98.6	-10.1	-7.2
<b>3</b>	Capital goods	41.3	55.2	61.6	-25.1	-10.3
<b>4</b>	Consumer Durables	41.9	51.2	64.5	-18.1	-20.7
<b>5</b>	Consumer Non-Durables	93.0	98.4	101.0	-5.5	-2.6

\* Provisional data

Note:

1. The indices are calculated with infinite decimal figures and are rounded up to one decimal figure when published.
2. Percentage changes are calculated on the basis of indices with infinite decimal figures and are rounded up to one decimal figure when published.

**Table 2: Annual rates of change of the Turnover Index in Industry for the Domestic Market**

**Base year: 2005=100.0**

Branch code	Branch name	June			Rate of change (%)	
		2013*	2012	2011	2013/2012	2012/2011
	<b>OVERALL INDEX</b>	82.2	88.9	92.4	-7.5	-3.8
<b>B</b>	<b>MINING AND QUARRYING</b>	133.7	76.6	61.0	74.4	25.7
<b>05</b>	Mining of coal and lignite	34.5	0.1	48.2	51519.1	-99.9
<b>06</b>	Extraction of crude petroleum and natural gas	937.3	371.4	0.0	152.4	-
<b>07</b>	Mining of metal ores	121.5	109.5	102.6	11.0	6.7
<b>08</b>	Other mining and quarrying products	58.5	47.2	62.6	23.9	-24.5
<b>C</b>	<b>MANUFACTURING</b>	80.3	87.8	91.5	-8.5	-4.1
<b>10</b>	Food	99.8	107.2	110.4	-7.0	-2.8
<b>11</b>	Beverages	124.5	132.1	139.2	-5.7	-5.1
<b>12</b>	Tobacco products	51.7	50.8	73.4	1.9	-30.9
<b>13</b>	Textiles	27.2	26.8	37.2	1.3	-28.0
<b>14</b>	Wearing apparel	27.6	27.8	37.3	-0.9	-25.3
<b>15</b>	Leather and related products	19.3	12.0	35.4	60.0	-66.0
<b>16</b>	Wood and cork	23.9	30.0	47.8	-20.2	-37.3
<b>17</b>	Paper and paper products	94.6	98.7	111.0	-4.2	-11.1
<b>18</b>	Printing and recording services	43.1	48.0	60.4	-10.3	-20.5
<b>19</b>	Coke and refined petroleum products	118.8	130.0	117.8	-8.6	10.4
<b>20</b>	Chemicals and chemical products	66.3	67.3	77.0	-1.5	-12.6
<b>21</b>	Basic pharmaceutical products and pharmaceutical preparations	88.5	83.8	83.0	5.7	1.0
<b>22</b>	Rubber and plastic products	73.9	78.1	88.8	-5.3	-12.1
<b>23</b>	Other non-metallic mineral products	30.9	34.8	54.4	-11.2	-35.9
<b>24</b>	Basic metals	53.2	60.8	72.8	-12.6	-16.4
<b>25</b>	Fabricated metal products	42.8	64.0	81.4	-33.0	-21.4
<b>26</b>	Computers, electronic and optical products	12.7	9.1	13.5	39.5	-32.7
<b>27</b>	Electrical equipment	72.8	76.4	75.3	-4.7	1.5
<b>28</b>	Machinery and equipment n. e. c.	33.2	58.1	67.6	-42.9	-14.1
<b>29</b>	Motor vehicles, trailers and semi-trailers	23.8	27.2	39.9	-12.5	-31.8
<b>30</b>	Other transport equipment	4.5	7.0	17.8	-36.0	-60.7
<b>31</b>	Furniture	27.7	39.1	62.1	-29.1	-37.0
<b>32</b>	Other manufactured goods	44.8	52.0	72.8	-13.7	-28.6
<b>33</b>	Repair and installation services of machinery and equipment	44.1	50.7	51.7	-13.1	-1.8
	<b>MAIN INDUSTRIAL GROUPINGS</b>					
<b>1</b>	Energy	122.0	130.5	117.0	-6.6	11.5
<b>2</b>	Intermediate goods	61.1	64.6	77.6	-5.5	-16.7
<b>3</b>	Capital goods	27.1	40.0	49.8	-32.3	-19.6
<b>4</b>	Consumer Durables	33.9	45.3	65.5	-25.2	-30.8
<b>5</b>	Consumer Non-Durables	86.4	92.1	97.4	-6.2	-5.3

\* Provisional data

Note:

1. The indices are calculated with infinite decimal figures and are rounded up to one decimal figure when published.
2. Percentage changes are calculated on the basis of indices with infinite decimal figures and are rounded up to one decimal figure when published.

**Table 3: Annual rates of change of the Turnover Index in Industry for the Non - Domestic Market**

**Base year: 2005=100.0**

Branch code	Branch name	June			Rate of change (%)	
		2013*	2012	2011	2013/2012	2012/2011
	<b>OVERALL INDEX</b>	189.9	191.9	178.4	-1.1	7.6
<b>B</b>	<b>MINING AND QUARRYING</b>	120.8	139.0	130.3	-13.1	6.7
<b>05</b>	Mining of coal and lignite	0.0	0.0	0.0	0.0	0.0
<b>06</b>	Extraction of crude petroleum and natural gas	0.0	0.0	0.0	0.0	0.0
<b>07</b>	Mining of metal ores	59.0	41.6	43.1	41.8	-3.6
<b>08</b>	Other mining and quarrying products	138.0	166.1	154.6	-16.9	7.5
<b>C</b>	<b>MANUFACTURING</b>	187.3	188.9	175.6	-0.9	7.6
<b>10</b>	Food	119.5	125.3	119.3	-4.7	5.1
<b>11</b>	Beverages	128.3	120.7	124.2	6.2	-2.8
<b>12</b>	Tobacco products	133.7	151.7	120.1	-11.8	26.2
<b>13</b>	Textiles	43.3	45.4	60.2	-4.8	-24.6
<b>14</b>	Wearing apparel	42.9	52.2	54.2	-17.8	-3.8
<b>15</b>	Leather and related products	1.3	1.7	112.8	-21.5	-98.5
<b>16</b>	Wood and cork	52.8	115.1	87.8	-54.1	31.1
<b>17</b>	Paper and paper products	161.2	166.7	176.3	-3.3	-5.4
<b>18</b>	Printing and recording services	117.6	159.1	142.3	-26.1	11.8
<b>19</b>	Coke and refined petroleum products	371.0	334.6	304.3	10.9	10.0
<b>20</b>	Chemicals and chemical products	135.9	139.6	138.7	-2.6	0.7
<b>21</b>	Basic pharmaceutical products and pharmaceutical preparations	395.2	363.6	306.4	8.7	18.7
<b>22</b>	Rubber and plastic products	149.1	165.4	155.2	-9.8	6.5
<b>23</b>	Other non-metallic mineral products	119.9	103.5	68.4	15.9	51.3
<b>24</b>	Basic metals	125.0	159.2	164.6	-21.5	-3.2
<b>25</b>	Fabricated metal products	161.6	159.5	135.7	1.3	17.6
<b>26</b>	Computers, electronic and optical products	36.1	58.8	55.9	-38.6	5.2
<b>27</b>	Electrical equipment	126.7	148.5	94.3	-14.6	57.5
<b>28</b>	Machinery and equipment n. e. c.	118.7	152.0	149.9	-21.9	1.4
<b>29</b>	Motor vehicles, trailers and semi-trailers	147.5	150.4	118.7	-1.9	26.7
<b>30</b>	Other transport equipment	35.6	31.9	43.7	11.3	-26.9
<b>31</b>	Furniture	195.3	182.8	165.6	6.8	10.4
<b>32</b>	Other manufactured goods	115.5	114.9	83.5	0.5	37.6
<b>33</b>	Repair and installation services of machinery and equipment	0.0	0.0	0.0	0.0	0.0
	<b>MAIN INDUSTRIAL GROUPINGS</b>					
<b>1</b>	Energy	371.0	334.6	304.3	10.9	10.0
<b>2</b>	Intermediate goods	126.5	147.6	141.4	-14.3	4.3
<b>3</b>	Capital goods	93.5	114.1	98.7	-18.1	15.6
<b>4</b>	Consumer Durables	69.8	71.6	66.5	-2.4	7.7
<b>5</b>	Consumer Non-Durables	116.0	119.9	112.5	-3.3	6.6

\* Provisional data

Note:

1. The indices are calculated with infinite decimal figures and are rounded up to one decimal figure when published.
2. Percentage changes are calculated on the basis of indices with infinite decimal figures and are rounded up to one decimal figure when published.

**Table 4: Annual rates of change of the Turnover Index in Industry for the Eurozone Countries**

**Base year: 2005=100.0**

Branch code	Branch name	2013*	June 2012	2011	Rate of change (%)	
					2013/2012	2012/2011
	<b>OVERALL INDEX</b>	157.0	159.6	159.4	-1.6	0.1
	<b>INDUSTRIAL SECTIONS</b>					
B	MINING AND QUARRYING	139.6	131.0	144.4	6.6	-9.3
C	MANUFACTURING	153.1	155.9	155.4	-1.8	0.3
	<b>MAIN INDUSTRIAL GROUPINGS</b>					
1	Energy	1984.9	1319.2	1133.8	50.5	16.4
2	Intermediate goods	122.3	148.6	156.1	-17.8	-4.8
3	Capital goods	57.0	65.3	72.2	-12.7	-9.6
4	Consumer Durables	193.9	178.8	144.7	8.4	23.6
5	Consumer Non-Durables	104.5	108.8	109.5	-3.9	-0.7

\* Provisional data

**Table 5: Annual rates of change of the Turnover Index in Industry for the Non - Eurozone Countries**

**Base year: 2005=100.0**

Branch code	Branch name	2013*	June 2012	2011	Rate of change (%)	
					2013/2012	2012/2011
	<b>OVERALL INDEX</b>	212.9	214.2	192.2	-0.6	11.5
	<b>INDUSTRIAL SECTIONS</b>					
B	MINING AND QUARRYING	104.5	146.7	118.0	-28.8	24.2
C	MANUFACTURING	210.9	211.5	190.0	-0.3	11.3
	<b>MAIN INDUSTRIAL GROUPINGS</b>					
1	Energy	322.5	305.1	279.4	5.7	9.2
2	Intermediate goods	133.6	148.2	133.3	-9.8	11.1
3	Capital goods	139.6	176.4	129.4	-20.8	36.3
4	Consumer Durables	48.7	51.7	47.2	-5.9	9.6
5	Consumer Non-Durables	126.6	135.7	111.9	-6.7	21.3

\* Provisional data

*Note:*

1. The indices are calculated with infinite decimal figures and are rounded up to one decimal figure when published.
2. Percentage changes are calculated on the basis of indices with infinite decimal figures and are rounded up to one decimal figure when published.

**Table 6: Evolution of the Turnover Index in Industry (Total Market)****Base year: 2005=100.0**

Year-month	Overall Index (Total Market)		Turnover Index in Industry for the Domestic Market		Turnover Index in Industry for the Non - Domestic Market	
	Index	Annual rate of change (%)	Index	Annual rate of change (%)	Index	Annual rate of change (%)
2012 VI	114.5	0.6	88.9	-3.8	191.9	7.6
VII	117.5	-7.7	95.5	-7.0	183.2	-8.7
VIII	109.2	2.8	86.4	-5.5	179.4	19.0
IX	114.6	3.9	83.4	-8.6	210.6	27.0
X	125.2	18.9	90.7	6.3	230.8	40.5
XI	113.8	4.5	76.5	-19.7	229.0	55.7
XII	115.0	-4.5	77.3	-26.1	231.9	40.0
2013 I	99.2	-9.5	69.4	-21.3	191.7	9.4
II	97.8	-7.6	72.1	-15.2	176.9	4.4
III	103.8	-11.6	71.3	-22.3	203.5	4.4
IV	118.4	-4.7	90.2	-9.0	204.9	1.8
V	115.5	1.4	75.0	-12.8	241.0	21.5
VI*	108.8	-5.0	82.2	-7.5	189.9	-1.1

\*Provisional data

**Table 7: Evolution of the Turnover Index in Industry for the Non – Domestic Market****Base year: 2005=100.0**

Year-month	Overall Index (Non - Domestic Market)		Turnover Index in Industry for Eurozone Countries		Turnover Index in Industry for Non - Eurozone Countries	
	Index	Annual rate of change (%)	Index	Annual rate of change (%)	Index	Annual rate of change (%)
2012 VI	191.9	7.6	159.6	0.1	214.2	11.5
VII	183.2	-8.7	146.6	-2.8	205.8	-11.4
VIII	179.4	19.0	125.0	-6.4	212.5	30.7
IX	210.6	27.0	148.5	2.7	251.3	38.8
X	230.8	40.5	171.0	7.7	270.1	59.9
XI	229.0	55.7	193.9	29.1	254.2	72.9
XII	231.9	40.0	137.6	-12.7	293.4	67.2
2013 I	191.7	9.4	141.7	13.1	221.9	8.2
II	176.9	4.4	135.7	3.2	203.4	3.7
III	203.5	4.4	150.4	-10.5	238.8	10.3
IV	204.9	1.8	185.3	33.0	219.1	-9.0
V	241.0	21.5	199.5	16.2	267.8	23.6
VI*	189.9	-1.1	157.0	-1.6	212.9	-0.6

\*Provisional data

Note: 1. The indices are calculated with infinite decimal figures and are rounded up to one decimal figure when published.  
2. Percentage changes are calculated on the basis of indices with infinite decimal figures and are rounded up to one decimal figure when published.

**Table 8: Average indices and rates of change (%) of the 12-month periods of Turnover Index in Industry (Total Market)**

**Base year: 2005=100.0**

Branch code	Branch name	Average Indices of 12-month periods			Rate of change (%) 2013/2012	Rate of change (%) 2012/2011
		July 2012- June 2013*	July 2011- June 2012	July 2010- June 2011		
	<b>OVERALL INDEX</b>	111.6	113.6	108.7	-1.8	4.6
<b>B</b>	<b>MINING AND QUARRYING</b>	85.7	93.2	97.9	-8.0	-4.8
<b>05</b>	Mining of coal and lignite	34.8	101.7	131.8	-65.8	-22.9
<b>06</b>	Extraction of crude petroleum and natural gas	184.9	214.6	159.1	-13.8	34.9
<b>07</b>	Mining of metal ores	77.4	83.5	75.1	-7.2	11.1
<b>08</b>	Other mining and quarrying products	83.3	86.0	96.0	-3.1	-10.4
<b>C</b>	<b>MANUFACTURING</b>	110.2	112.1	107.1	-1.8	4.7
<b>10</b>	Food	104.0	107.3	108.6	-3.1	-1.3
<b>11</b>	Beverages	85.1	92.0	101.9	-7.5	-9.8
<b>12</b>	Tobacco products	72.2	79.7	74.8	-9.5	6.5
<b>13</b>	Textiles	33.3	35.8	48.1	-7.0	-25.7
<b>14</b>	Wearing apparel	41.2	43.8	53.4	-5.8	-18.0
<b>15</b>	Leather and related products	24.5	35.2	54.7	-30.3	-35.6
<b>16</b>	Wood and cork	32.2	40.5	52.6	-20.5	-22.9
<b>17</b>	Paper and paper products	100.1	104.2	111.9	-3.9	-7.0
<b>18</b>	Printing and recording services	45.3	50.5	69.4	-10.4	-27.1
<b>19</b>	Coke and refined petroleum products	197.9	188.9	154.0	4.8	22.7
<b>20</b>	Chemicals and chemical products	85.2	88.3	92.9	-3.5	-5.0
<b>21</b>	Basic pharmaceutical products and pharmaceutical preparations	132.8	127.1	129.6	4.5	-2.0
<b>22</b>	Rubber and plastic products	93.8	96.1	98.8	-2.3	-2.7
<b>23</b>	Other non-metallic mineral products	37.3	40.5	59.7	-7.9	-32.1
<b>24</b>	Basic metals	93.2	108.7	111.9	-14.3	-2.8
<b>25</b>	Fabricated metal products	67.1	78.5	82.0	-14.5	-4.3
<b>26</b>	Computers, electronic and optical products	30.2	33.7	40.2	-10.4	-16.3
<b>27</b>	Electrical equipment	93.0	90.9	88.0	2.3	3.4
<b>28</b>	Machinery and equipment n. e. c.	71.4	74.2	87.8	-3.7	-15.5
<b>29</b>	Motor vehicles, trailers and semi-trailers	40.1	49.3	59.9	-18.7	-17.6
<b>30</b>	Other transport equipment	20.8	34.1	46.1	-39.2	-25.9
<b>31</b>	Furniture	34.3	47.9	66.5	-28.3	-27.9
<b>32</b>	Other manufactured goods	62.7	66.3	74.7	-5.4	-11.2
<b>33</b>	Repair and installation services of machinery and equipment	44.0	51.6	51.8	-14.6	-0.5
	<b>MAIN INDUSTRIAL GROUPINGS</b>					
<b>1</b>	Energy	197.4	188.7	153.9	4.6	22.6
<b>2</b>	Intermediate goods	81.8	87.9	94.6	-7.0	-7.1
<b>3</b>	Capital goods	43.0	53.6	59.5	-19.7	-10.0
<b>4</b>	Consumer Durables	42.7	52.9	62.9	-19.3	-15.9
<b>5</b>	Consumer Non-Durables	86.2	90.2	95.0	-4.4	-5.1

\*Provisional data

Note: 1. The indices are calculated with infinite decimal figures and are rounded up to one decimal figure when published.  
2. Percentage changes are calculated on the basis of indices with infinite decimal figures and are rounded up to one decimal figure when published.

## METHODOLOGICAL NOTES

<b>Generally</b>	The Turnover Index is being compiled since 2006.
<b>Purpose of the index</b>	The purpose of this index is to measure the monthly activity of the industrial sector in terms of value. Turnover comprises the totals invoiced (without VAT) by the observation units during the reference period and corresponds to the market sales of goods or services supplied to third parties. The purposes and the characteristics of the Turnover Index apply, as well, to the indices for the distinction between domestic and non-domestic turnover.
<b>Legal basis</b>	The compilation and publication of the Turnover Index is based on the framework of requirements of the Council Regulation (EC) No 1165/98 concerning short-term statistics (STS-R), as well as the amendment Regulation (EC) No 1158/05 of the European Parliament and Council, amending the Council Regulation (EC) No 1165/98. Furthermore, this index is governed by the Regulation (EEC) No.1893/2006 of the European Parliament and of the Council, by the Commission Regulation (EEC) No.656/2007 and by the Regulation (EEC) No.451/2008 of the Council.
<b>Reference period</b>	Month
<b>Base year</b>	2005=100.0.
<b>Revision</b>	The last revision of the Turnover Index in Industry with base year 2005=100.0 is done in the framework of the Short – Term Statistics (STS) Council Regulation (EC) No 1165/98 concerning short-term statistics. According to this regulation the index in question is updated every five years, in years ending in 0 or 5.
<b>Statistical classifications</b>	At the level of categories of economic activities the new Eurostat classification NACE Rev. 2 was used (Regulation 1893/2006), while at the level of main industrial groups, the allocation of two-digit and three-digit NACE Rev. 2 headings to categories of aggregate classification was used, in accordance with the Commission Regulation 656/2007. At product level, the new Eurostat classification CPA 2008 was used, according to the Council Regulation 451/2008.
<b>Geographical coverage</b>	The Index covers the whole country.
<b>Coverage of economic activities</b>	The Turnover Index in Industry covers the whole country and is compiled for all activities listed in Sections C (mining and quarrying) and D (manufacturing) of the NACE Rev.2 classification.
<b>Computation of the Index</b>	The Turnover Index in Industry is a fixed base index. This index is calculated initially at the four-digit level of economic activity and subsequently, with the implementation of appropriate weighting coefficients, the index is calculated at higher levels (three-level, two-level and one-level of economic activity) or at the level of Main Industrial Groupings (MIGs).
<b>Publication of data</b>	The Turnover Index with base year 2005=100.0 is being released since April 2009 with January 2009 as first reference month. Data with base year 2005=100.0 are available from January 2000 onwards.
<b>References</b>	More information about the methodology concerning the compilation and calculation of the index and for the time series is available on the Hellenic Statistical Authority (ELSTAT) website ( <a href="http://www.statistics.gr">www.statistics.gr</a> ).