



HELLENIC REPUBLIC



HELLENIC STATISTICAL AUTHORITY

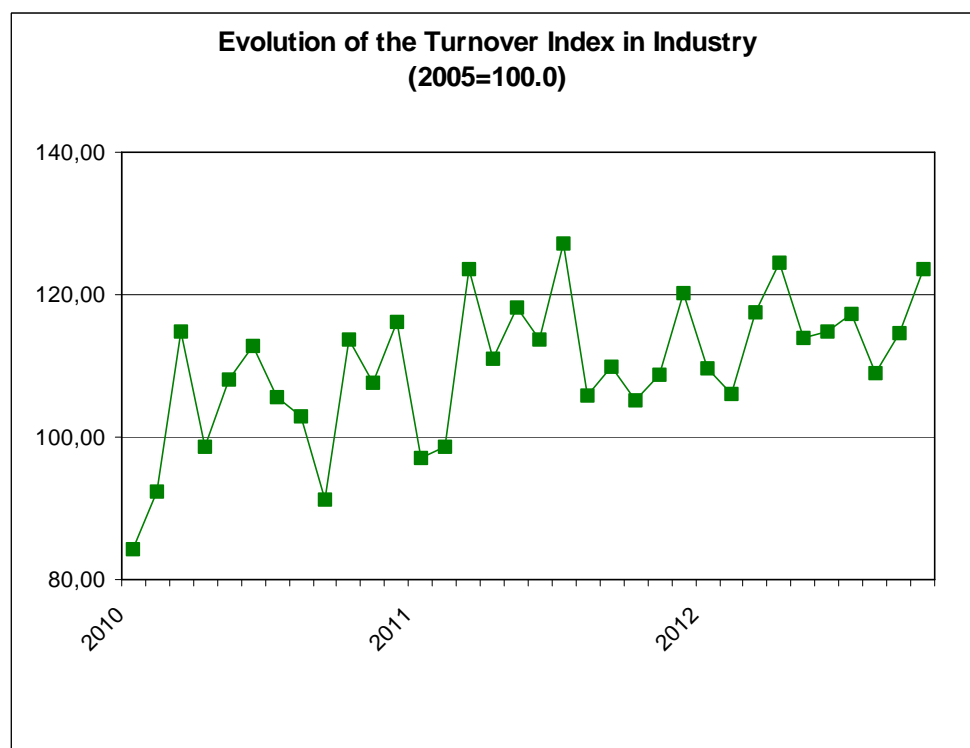
Piraeus, 20 December 2012

PRESS RELEASE

TURNOVER INDEX IN INDUSTRY: October 2012

The Turnover Index in Industry (both domestic and non-domestic market) in October 2012 compared with October 2011 recorded an increase of 17.3%. In October 2011, the annual rate of change of the Turnover Index in Industry was -8.2%.

The average Turnover Index in Industry for the 12-month period from November 2011 to October 2012, as compared to the 12-month period from November 2010 to October 2011, increased by 3.2%. In October 2011, the corresponding average rate of change of the Turnover Index in Industry was 8.6%.



Information:

Economic and Short-Term
Indicators Division

Production Indices Section

Diamantaki Aikaterini
Tel: 0030 213 1352122
Fax: 0030 213 1352738

The increase of the Turnover Index in Industry by 17.3% in October 2012, compared with October 2011, was due to the annual changes as following:

- by Industrial Sections

- Mining and quarrying turnover decreased by 25.5%.
- Manufacturing turnover increased by 18.1%.

In addition, the increase of the Turnover Index in Industry by 17.3% in October 2012, compared with October 2011, was due to the annual changes of the indices of the markets as following:

- The Turnover Index in Industry for the domestic market increased by 5.1%.
- The Turnover Index in Industry for the non-domestic market increased by 38.2%.

The increase of the Turnover Index in Industry for the non-domestic market by 38.2% in October 2012, compared with October 2011, was due to the annual changes as following:

- The Turnover Index in Industry for the Eurozone countries increased by 3.8%.
- The Turnover Index in Industry for the non-Eurozone countries increased by 57.9%.

Table 1: Annual rates of change of the Turnover Index in Industry (Total Market)

Base year: 2005=100.0

Branch code	Branch name	October			Rate of change (%)	
		2012*	2011	2010	2012/2011	2011/2010
	OVERALL INDEX	123.5	105.2	114.7	17.3	-8.2
B	MINING AND QUARRYING	83.2	111.7	129.1	-25.5	-13.4
05	Mining of coal and lignite	99.7	95.5	123.5	4.4	-22.6
06	Extraction of crude petroleum and natural gas	0.0	421.7	451.3	-100.0	-6.5
07	Mining of metal ores	96.5	97.8	76.6	-1.3	27.6
08	Other mining and quarrying products	85.5	93.5	116.7	-8.5	-19.9
C	MANUFACTURING	122.1	103.4	112.6	18.1	-8.1
10	Food	106.1	102.9	115.4	3.1	-10.8
11	Beverages	68.6	61.7	86.8	11.2	-28.9
12	Tobacco products	80.1	80.6	76.8	-0.6	4.9
13	Textiles	36.8	40.0	56.2	-7.9	-28.8
14	Wearing apparel	43.4	48.2	68.3	-10.0	-29.3
15	Leather and related products	34.6	60.9	91.0	-43.3	-33.0
16	Wood and cork	42.3	44.2	69.8	-4.2	-36.7
17	Paper and paper products	109.0	107.6	124.5	1.2	-13.5
18	Printing and recording services	47.8	50.2	82.4	-4.7	-39.1
19	Coke and refined petroleum products	232.6	168.4	150.7	38.1	11.7
20	Chemicals and chemical products	92.5	89.1	106.7	3.8	-16.5
21	Basic pharmaceutical products and pharmaceutical preparations	143.4	116.2	144.8	23.4	-19.7
22	Rubber and plastic products	91.8	88.7	106.0	3.5	-16.4
23	Other non-metallic mineral products	42.5	42.2	78.0	0.8	-45.9
24	Basic metals	101.2	99.0	122.5	2.3	-19.2
25	Fabricated metal products	76.1	75.8	85.5	0.4	-11.3
26	Computers, electronic and optical products	24.4	25.5	53.3	-4.3	-52.2
27	Electrical equipment	86.9	79.9	110.0	8.8	-27.4
28	Machinery and equipment n.e.c.	74.3	60.9	68.9	22.1	-11.7
29	Motor vehicles, trailers and semi-trailers	37.3	56.1	67.9	-33.5	-17.5
30	Other transport equipment	35.8	49.1	58.1	-27.1	-15.5
31	Furniture	47.3	55.6	82.3	-15.0	-32.4
32	Other manufactured goods	63.3	62.5	61.6	1.3	1.4
33	Repair and installation services of machinery and equipment	49.9	54.9	56.8	-9.0	-3.4
	MAIN INDUSTRIAL GROUPINGS					
1	Energy	231.5	169.0	151.6	37.0	11.5
2	Intermediate goods	86.8	84.5	107.3	2.7	-21.2
3	Capital goods	51.0	56.5	62.1	-9.6	-9.1
4	Consumer Durables	51.5	56.4	77.3	-8.7	-27.0
5	Consumer Non-Durables	86.3	82.5	100.5	4.6	-17.9

* Provisional data

Note:

1. The indices are calculated with infinite decimal figures and are rounded up to one decimal figure when published.
2. Percentage changes are calculated on the basis of indices with infinite decimal figures and are rounded up to one decimal figure when published.

Table 2: Annual rates of change of the Turnover Index in Industry for the Domestic Market

Base year: 2005=100.0

Branch code	Branch name	October			Rate of change (%)	
		2012*	2011	2010	2012/2011	2011/2010
	OVERALL INDEX	89.6	85.3	101.9	5.1	-16.2
B	MINING AND QUARRYING	61.6	90.4	116.4	-31.9	-22.4
05	Mining of coal and lignite	99.7	95.5	123.5	4.4	-22.6
06	Extraction of crude petroleum and natural gas	0.0	421.7	451.3	-100.0	-6.5
07	Mining of metal ores	126.6	114.0	99.4	11.0	14.7
08	Other mining and quarrying products	55.3	51.2	82.6	8.1	-38.0
C	MANUFACTURING	88.8	84.0	100.2	5.6	-16.1
10	Food	103.1	100.7	113.6	2.4	-11.4
11	Beverages	65.9	59.7	85.3	10.3	-30.0
12	Tobacco products	51.0	53.4	51.6	-4.6	3.5
13	Textiles	32.8	34.1	44.7	-3.8	-23.8
14	Wearing apparel	37.1	48.9	77.9	-24.2	-37.2
15	Leather and related products	37.7	63.1	91.2	-40.2	-30.8
16	Wood and cork	33.9	38.6	65.9	-12.2	-41.5
17	Paper and paper products	105.4	104.2	122.0	1.1	-14.6
18	Printing and recording services	47.0	48.6	78.7	-3.3	-38.2
19	Coke and refined petroleum products	150.1	130.3	126.6	15.2	2.9
20	Chemicals and chemical products	67.3	66.4	90.3	1.3	-26.4
21	Basic pharmaceutical products and pharmaceutical preparations	93.2	83.3	100.1	11.9	-16.8
22	Rubber and plastic products	73.9	71.0	90.7	4.0	-21.7
23	Other non-metallic mineral products	34.6	42.1	77.1	-17.9	-45.4
24	Basic metals	64.0	60.5	91.6	5.8	-33.9
25	Fabricated metal products	47.4	58.8	73.8	-19.4	-20.4
26	Computers, electronic and optical products	10.8	9.8	36.3	10.3	-73.0
27	Electrical equipment	68.7	61.0	97.4	12.6	-37.3
28	Machinery and equipment n.e.c.	33.9	41.1	58.7	-17.3	-30.1
29	Motor vehicles, trailers and semi-trailers	20.5	41.7	28.4	-50.8	47.0
30	Other transport equipment	4.6	10.6	164.1	-56.7	-93.6
31	Furniture	44.4	54.1	78.9	-17.9	-31.5
32	Other manufactured goods	42.0	46.3	53.2	-9.1	-13.0
33	Repair and installation services of machinery and equipment	49.9	54.9	56.8	-9.0	-3.4
	MAIN INDUSTRIAL GROUPINGS					
1	Energy	149.3	131.4	128.0	13.7	2.7
2	Intermediate goods	65.9	65.5	92.1	0.7	-28.8
3	Capital goods	33.5	43.6	73.7	-23.2	-40.9
4	Consumer Durables	44.0	53.8	76.8	-18.2	-30.0
5	Consumer Non-Durables	78.2	76.6	94.8	2.1	-19.1

* Provisional data

Note:

1. The indices are calculated with infinite decimal figures and are rounded up to one decimal figure when published.
2. Percentage changes are calculated on the basis of indices with infinite decimal figures and are rounded up to one decimal figure when published.

Table 3: Annual rates of change of the Turnover Index in Industry for the Non - Domestic Market

Base year: 2005=100.0

Branch code	Branch name	October			Rate of change (%)	
		2012*	2011	2010	2012/2011	2011/2010
	OVERALL INDEX	227.0	164.3	158.6	38.2	3.6
B	MINING AND QUARRYING	115.0	139.4	137.1	-17.5	1.6
05	Mining of coal and lignite	0.0	0.0	0.0	0.0	0.0
06	Extraction of crude petroleum and natural gas	0.0	0.0	0.0	0.0	0.0
07	Mining of metal ores	69.6	83.3	56.2	-16.4	48.1
08	Other mining and quarrying products	127.7	155.0	159.7	-17.6	-2.9
C	MANUFACTURING	224.5	161.2	155.6	39.2	3.6
10	Food	117.8	113.3	122.3	3.9	-7.3
11	Beverages	107.4	91.3	109.5	17.7	-16.6
12	Tobacco products	157.6	152.8	143.8	3.2	6.2
13	Textiles	41.7	47.6	70.9	-12.5	-32.9
14	Wearing apparel	50.3	48.6	61.0	3.5	-20.4
15	Leather and related products	6.8	42.0	89.2	-83.8	-52.9
16	Wood and cork	99.1	81.4	95.1	21.7	-14.3
17	Paper and paper products	138.1	136.1	145.0	1.5	-6.2
18	Printing and recording services	128.1	198.0	431.9	-35.3	-54.2
19	Coke and refined petroleum products	500.3	292.1	229.0	71.3	27.5
20	Chemicals and chemical products	151.0	141.2	144.7	7.0	-2.5
21	Basic pharmaceutical products and pharmaceutical preparations	395.2	281.3	369.0	40.5	-23.8
22	Rubber and plastic products	128.2	124.5	139.9	3.0	-11.0
23	Other non-metallic mineral products	96.6	40.8	82.9	136.5	-50.7
24	Basic metals	139.2	138.1	153.9	0.8	-10.3
25	Fabricated metal products	183.7	138.3	129.1	32.9	7.1
26	Computers, electronic and optical products	32.5	34.3	62.8	-5.3	-45.4
27	Electrical equipment	106.4	100.6	121.9	5.8	-17.4
28	Machinery and equipment n.e.c.	123.2	84.4	76.8	46.0	9.9
29	Motor vehicles, trailers and semi-trailers	125.5	120.9	463.4	3.8	-73.9
30	Other transport equipment	54.8	78.0	52.0	-29.8	50.0
31	Furniture	142.2	98.5	211.3	44.4	-53.4
32	Other manufactured goods	144.7	131.0	95.8	10.4	36.8
33	Repair and installation services of machinery and equipment	0.0	0.0	0.0	0.0	0.0
	MAIN INDUSTRIAL GROUPINGS					
1	Energy	500.3	292.1	229.0	71.3	27.5
2	Intermediate goods	129.9	123.4	138.5	5.3	-10.9
3	Capital goods	106.4	82.5	89.3	29.0	-7.7
4	Consumer Durables	75.3	62.8	81.1	19.8	-22.5
5	Consumer Non-Durables	115.9	105.4	121.9	9.9	-13.5

* Provisional data

Note:

1. The indices are calculated with infinite decimal figures and are rounded up to one decimal figure when published.
2. Percentage changes are calculated on the basis of indices with infinite decimal figures and are rounded up to one decimal figure when published.

Table 4: Annual rates of change of the Turnover Index in Industry for the Eurozone Countries

Base year: 2005=100.0

Branch code	Branch name	October			Rate of change (%)	
		2012*	2011	2010	2012/2011	2011/2010
	OVERALL INDEX	164.8	158.8	152.2	3.8	4.3
	INDUSTRIAL SECTIONS					
B	MINING AND QUARRYING	134.1	117.8	109.5	13.8	7.6
C	MANUFACTURING	161.1	155.5	149.2	3.6	4.2
	MAIN INDUSTRIAL GROUPINGS					
1	Energy	2065.4	2071.8	674.2	-0.3	207.3
2	Intermediate goods	140.7	131.0	158.0	7.5	-17.1
3	Capital goods	50.6	55.1	77.2	-8.1	-28.7
4	Consumer Durables	157.8	79.1	188.8	99.4	-58.1
5	Consumer Non-Durables	96.0	102.8	107.4	-6.6	-4.2

* Provisional data

Table 5: Annual rates of change of the Turnover Index in Industry for the Non - Eurozone Countries

Base year: 2005=100.0

Branch code	Branch name	October			Rate of change (%)	
		2012*	2011	2010	2012/2011	2011/2010
	OVERALL INDEX	266.8	169.0	165.8	57.9	1.9
	INDUSTRIAL SECTIONS					
B	MINING AND QUARRYING	97.1	157.8	161.8	-38.5	-2.4
C	MANUFACTURING	265.0	166.0	162.8	59.6	2.0
	MAIN INDUSTRIAL GROUPINGS					
1	Energy	453.3	238.6	215.6	90.0	10.7
2	Intermediate goods	124.2	121.6	126.4	2.2	-3.9
3	Capital goods	178.5	113.2	99.9	57.7	13.3
4	Consumer Durables	74.9	66.3	86.2	12.9	-23.0
5	Consumer Non-Durables	138.2	104.3	135.0	32.5	-22.7

* Provisional data

Note:

1. The indices are calculated with infinite decimal figures and are rounded up to one decimal figure when published.
2. Percentage changes are calculated on the basis of indices with infinite decimal figures and are rounded up to one decimal figure when published.

Table 6: Evolution of the Turnover Index in Industry (Total Market)**Base year: 2005=100.0**

Year-month	Overall Index (Total Market)		Turnover Index in Industry for the Domestic Market		Turnover Index in Industry for the Non - Domestic Market	
	Index	Annual rate of change (%)	Index	Annual rate of change (%)	Index	Annual rate of change (%)
2011 X	105.2	-8.2	85.3	-16.2	164.3	3.6
XI	109.0	0.4	95.2	0.0	147.0	-5.5
XII	120.4	2.4	104.5	1.6	165.6	-2.0
2012 I	109.7	12.8	88.4	3.4	175.0	33.1
II	106.1	7.5	85.3	-4.8	169.0	36.8
III	117.6	-4.8	92.1	-7.6	194.7	-0.2
IV	124.4	12.0	99.4	7.8	201.0	20.0
V	113.9	-3.8	86.3	-4.8	197.5	-2.5
VI	114.8	0.8	89.2	-3.4	192.1	7.6
VII	117.3	-7.8	95.7	-6.8	181.9	-9.3
VIII	109.0	2.6	86.6	-5.2	178.1	18.1
XI	114.6	3.8	83.6	-8.4	209.2	26.2
X*	123.5	17.3	89.6	5.1	227.0	38.2

*Provisional data

Table 7: Evolution of the Turnover Index in Industry for the Non – Domestic Market**Base year: 2005=100.0**

Year-month	Overall Index (Non - Domestic Market)		Turnover Index in Industry for Eurozone Countries		Turnover Index in Industry for Non - Eurozone Countries	
	Index	Annual rate of change (%)	Index	Annual rate of change (%)	Index	Annual rate of change (%)
2011 X	164.3	3.6	158.8	4.3	169.0	1.9
XI	147.0	-5.5	150.2	1.6	147.0	-8.9
XII	165.6	-2.0	157.6	5.7	175.5	-2.7
2012 I	175.0	33.1	125.0	7.4	204.9	45.5
II	169.0	36.8	131.9	-13.6	195.6	78.4
III	194.7	-0.2	163.7	1.2	217.2	-0.6
IV	201.0	20.0	137.3	-15.4	241.0	39.7
V	197.5	-2.5	172.0	3.9	215.5	-5.4
VI	192.1	7.6	160.4	0.6	214.2	11.4
VII	181.9	-9.3	147.3	-2.4	203.6	-12.4
VIII	178.1	18.1	124.2	-6.9	211.0	29.8
XI	209.2	26.2	144.3	-0.2	250.1	38.2
X*	227.0	38.2	164.8	3.8	266.8	57.9

*Provisional data

Note: 1. The indices are calculated with infinite decimal figures and are rounded up to one decimal figure when published.
2. Percentage changes are calculated on the basis of indices with infinite decimal figures and are rounded up to one decimal figure when published.

Table 8: Average indices and rates of change (%) of the 12-month periods of Turnover Index in Industry (Total Market)

Base year: 2005=100.0

Branch code	Branch name	Average Indices of 12-month periods			Rate of change (%) 2012/2011	Rate of change (%) 2011/2010
		Nov. 2011- Oct. 2012*	Nov.2010- Oct. 2011	Nov. 2009- Oct. 2010		
	OVERALL INDEX	115.0	111.5	102.6	3.2	8.6
B	MINING AND QUARRYING	87.1	97.1	103.4	-10.3	-6.1
05	Mining of coal and lignite	64.8	135.0	161.0	-52.0	-16.2
06	Extraction of crude petroleum and natural gas	166.2	172.6	175.0	-3.7	-1.3
07	Mining of metal ores	80.7	82.4	75.5	-2.0	9.1
08	Other mining and quarrying products	84.1	92.4	100.4	-9.0	-7.9
C	MANUFACTURING	113.6	109.9	101.0	3.4	8.8
10	Food	106.9	108.4	108.4	-1.5	0.0
11	Beverages	89.2	98.9	107.3	-9.8	-7.8
12	Tobacco products	75.8	79.2	81.5	-4.2	-2.9
13	Textiles	34.4	45.3	50.7	-24.2	-10.6
14	Wearing apparel	41.9	49.8	61.7	-15.9	-19.2
15	Leather and related products	27.3	51.0	65.5	-46.6	-22.1
16	Wood and cork	40.3	48.3	62.1	-16.6	-22.3
17	Paper and paper products	102.9	112.0	112.6	-8.1	-0.5
18	Printing and recording services	48.4	62.4	83.3	-22.4	-25.1
19	Coke and refined petroleum products	200.2	166.5	130.9	20.2	27.1
20	Chemicals and chemical products	84.9	94.7	90.6	-10.4	4.6
21	Basic pharmaceutical products and pharmaceutical preparations	126.9	127.7	136.4	-0.7	-6.3
22	Rubber and plastic products	94.3	99.4	94.8	-5.2	4.9
23	Other non-metallic mineral products	39.2	52.3	75.6	-25.0	-30.9
24	Basic metals	104.7	114.6	93.4	-8.6	22.7
25	Fabricated metal products	75.7	83.1	82.9	-9.0	0.3
26	Computers, electronic and optical products	33.0	36.1	44.4	-8.5	-18.7
27	Electrical equipment	89.7	87.1	87.1	2.9	0.1
28	Machinery and equipment n.e.c.	70.9	88.1	82.8	-19.6	6.5
29	Motor vehicles, trailers and semi-trailers	43.5	61.9	65.0	-29.7	-4.8
30	Other transport equipment	32.3	43.9	48.9	-26.5	-10.2
31	Furniture	42.6	61.9	79.0	-31.1	-21.6
32	Other manufactured goods	65.1	72.8	79.6	-10.7	-8.4
33	Repair and installation services of machinery and equipment	47.6	53.3	55.5	-10.7	-4.0
	MAIN INDUSTRIAL GROUPINGS					
1	Energy	199.7	166.4	131.2	20.0	26.9
2	Intermediate goods	85.5	94.4	90.9	-9.4	3.9
3	Capital goods	50.2	60.0	61.0	-16.3	-1.7
4	Consumer Durables	49.1	59.8	71.2	-17.9	-15.9
5	Consumer Non-Durables	88.9	93.3	99.4	-4.7	-6.1

*Provisional data

Note: 1. The indices are calculated with infinite decimal figures and are rounded up to one decimal figure when published.
2. Percentage changes are calculated on the basis of indices with infinite decimal figures and are rounded up to one decimal figure when published.

METHODOLOGICAL NOTES

Generally	The Turnover Index is being compiled since 2006.
Purpose of the index	The purpose of this index is to measure the monthly activity of the industrial sector in terms of value. Turnover comprises the totals invoiced (without VAT) by the observation units during the reference period and corresponds to the market sales of goods or services supplied to third parties. The purposes and the characteristics of the Turnover Index apply, as well, to the indices for the distinction between domestic and non-domestic turnover.
Legal basis	The compilation and publication of the Turnover Index is based on the framework of requirements of the Council Regulation (EC) No 1165/98 concerning short-term statistics (STS-R), as well as the amendment Regulation (EC) No 1158/05 of the European Parliament and Council, amending the Council Regulation (EC) No 1165/98. Furthermore, this index is governed by the Regulation (EEC) No.1893/2006 of the European Parliament and of the Council, by the Commission Regulation (EEC) No.656/2007 and by the Regulation (EEC) No.451/2008 of the Council.
Reference period	Month
Base year	2005=100.0.
Revision	The last revision of the Turnover Index in Industry with base year 2005=100.0 is done in the framework of the Short – Term Statistics (STS) Council Regulation (EC) No 1165/98 concerning short-term statistics. According to this regulation the index in question is updated every five years, in years ending in 0 or 5.
Statistical classifications	At the level of categories of economic activities the new Eurostat classification NACE Rev. 2 was used (Regulation 1893/2006), while at the level of main industrial groups, the allocation of two-digit and three-digit NACE Rev. 2 headings to categories of aggregate classification was used, in accordance with the Commission Regulation 656/2007. At product level, the new Eurostat classification CPA 2008 was used, according to the Council Regulation 451/2008.
Geographical coverage	The Index covers the whole country.
Coverage of economic activities	The Turnover Index in Industry covers the whole country and is compiled for all activities listed in Sections C (mining and quarrying) and D (manufacturing) of the NACE Rev.2 classification.
Computation of the Index	The Turnover Index in Industry is a fixed base index. This index is calculated initially at the four-digit level of economic activity and subsequently, with the implementation of appropriate weighting coefficients, the index is calculated at higher levels (three-level, two-level and one-level of economic activity) or at the level of Main Industrial Groupings (MIGs).
Publication of data	The Turnover Index with base year 2005=100.0 is being released since April 2009 with January 2009 as first reference month. Data with base year 2005=100.0 are available from January 2000 onwards.
References	More information about the methodology concerning the compilation and calculation of the index and for the time series is available on the Hellenic Statistical Authority (ELSTAT) website (www.statistics.gr).