



HELLENIC REPUBLIC



HELLENIC STATISTICAL AUTHORITY

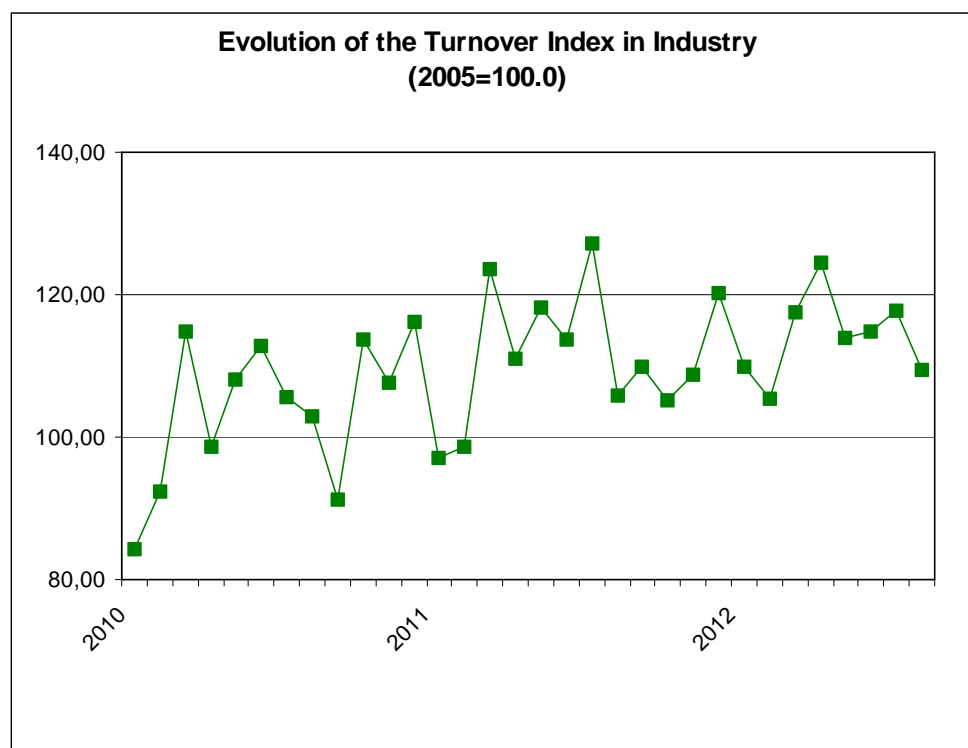
Piraeus, 19 October 2012

PRESS RELEASE

TURNOVER INDEX IN INDUSTRY: August 2012

The Turnover Index in Industry (both domestic and non-domestic market) in August 2012 compared with August 2011 recorded an increase of 3.0%. In August 2011, the annual rate of change of the Turnover Index in Industry was 3.1%.

The average Turnover Index in Industry for the 12-month period from September 2011 to August 2012, as compared to the 12-month period from September 2010 to August 2011, increased by 2.2%. In August 2011, the corresponding average rate of change of the Turnover Index in Industry was 8.3%.



Information:

Economic and Short-Term
Indicators Division

Production Indices Section

Diamantaki Aikaterini
Tel: 0030 213 1352122
Fax: 0030 213 1352738

The increase of the Turnover Index in Industry by 3.0% in August 2012, compared with August 2011, was due to the annual changes as following:

- by Industrial Sections

- Mining and quarrying turnover decreased by 25.3%.
- Manufacturing turnover increased by 3.4%.

In addition, the increase of the Turnover Index in Industry by 3.0% in August 2012, compared with August 2011, was due to the annual changes of the indices of the markets as following:

- The Turnover Index in Industry for the domestic market decreased by 5.0%.
- The Turnover Index in Industry for the non-domestic market increased by 18.7%.

The increase of the Turnover Index in Industry for the non-domestic market by 18.7% in August 2012, compared with August 2011, was due to the annual changes as following:

- The Turnover Index in Industry for the Eurozone countries decreased by 2.4%.
- The Turnover Index in Industry for the non-Eurozone countries increased by 28.3%.

Table 1: Annual rates of change of the Turnover Index in Industry (Total Market)

Base year: 2005=100.0

Branch code	Branch name	August			Rate of change (%)	
		2012*	2011	2010	2012/2011	2011/2010
	OVERALL INDEX	109.4	106.2	103.0	3.0	3.1
B	MINING AND QUARRYING	61.7	82.7	94.6	-25.3	-12.6
05	Mining of coal and lignite	17.8	157.8	110.3	-88.7	43.1
06	Extraction of crude petroleum and natural gas	0.0	0.0	0.0	-	-
07	Mining of metal ores	65.7	85.2	62.8	-22.8	35.5
08	Other mining and quarrying products	67.9	83.6	106.4	-18.9	-21.4
C	MANUFACTURING	108.4	104.9	101.5	3.4	3.3
10	Food	110.8	110.1	111.3	0.6	-1.1
11	Beverages	130.8	138.0	156.2	-5.2	-11.7
12	Tobacco products	83.5	87.9	80.8	-5.0	8.8
13	Textiles	13.9	13.7	19.7	1.2	-30.2
14	Wearing apparel	31.5	37.5	47.4	-16.0	-21.0
15	Leather and related products	11.5	21.7	27.5	-46.9	-21.0
16	Wood and cork	27.3	32.1	38.1	-14.8	-15.8
17	Paper and paper products	88.7	89.5	96.4	-0.9	-7.2
18	Printing and recording services	40.6	43.8	57.7	-7.5	-24.0
19	Coke and refined petroleum products	203.0	172.2	146.4	17.9	17.6
20	Chemicals and chemical products	73.5	85.8	84.0	-14.3	2.1
21	Basic pharmaceutical products and pharmaceutical preparations	76.2	65.3	68.3	16.7	-4.5
22	Rubber and plastic products	77.7	75.1	79.4	3.4	-5.4
23	Other non-metallic mineral products	35.7	38.4	64.1	-6.9	-40.1
24	Basic metals	78.2	99.0	96.6	-21.0	2.5
25	Fabricated metal products	69.0	89.9	91.6	-23.2	-1.8
26	Computers, electronic and optical products	22.0	14.9	26.4	47.4	-43.5
27	Electrical equipment	78.6	77.8	79.7	1.1	-2.5
28	Machinery and equipment n. e. c.	50.2	57.2	92.0	-12.1	-37.9
29	Motor vehicles, trailers and semi-trailers	35.3	60.6	44.7	-41.8	35.6
30	Other transport equipment	11.8	19.8	25.3	-40.4	-21.8
31	Furniture	25.2	33.5	43.1	-24.8	-22.2
32	Other manufactured goods	51.7	47.3	49.2	9.5	-4.0
33	Repair and installation services of machinery and equipment	30.4	43.9	31.1	-30.6	41.0
	MAIN INDUSTRIAL GROUPINGS					
1	Energy	201.9	171.6	145.8	17.7	17.7
2	Intermediate goods	72.0	81.3	86.7	-11.4	-6.2
3	Capital goods	30.8	46.1	46.8	-33.2	-1.4
4	Consumer Durables	30.6	41.0	48.0	-25.5	-14.5
5	Consumer Non-Durables	91.4	92.0	98.0	-0.7	-6.2

* Provisional data

Note:

1. The indices are calculated with infinite decimal figures and are rounded up to one decimal figure when published.
2. Percentage changes are calculated on the basis of indices with infinite decimal figures and are rounded up to one decimal figure when published.

Table 2: Annual rates of change of the Turnover Index in Industry for the Domestic Market

Base year: 2005=100.0

Branch code	Branch name	August			Rate of change (%)	
		2012*	2011	2010	2012/2011	2011/2010
	OVERALL INDEX	86.8	91.4	90.0	-5.0	1.5
B	MINING AND QUARRYING	37.5	55.5	61.4	-32.4	-9.5
05	Mining of coal and lignite	17.8	157.8	110.3	-88.7	43.1
06	Extraction of crude petroleum and natural gas	0.0	0.0	0.0	-	-
07	Mining of metal ores	99.5	110.5	85.5	-9.9	29.2
08	Other mining and quarrying products	34.3	44.5	60.1	-23.0	-26.0
C	MANUFACTURING	86.3	90.6	89.2	-4.8	1.6
10	Food	109.7	110.2	111.4	-0.4	-1.1
11	Beverages	133.0	140.4	160.3	-5.3	-12.4
12	Tobacco products	60.1	69.6	70.1	-13.7	-0.7
13	Textiles	12.4	14.9	16.8	-16.3	-11.8
14	Wearing apparel	25.3	35.6	46.8	-28.8	-24.0
15	Leather and related products	12.5	24.1	30.3	-47.9	-20.7
16	Wood and cork	19.1	24.7	36.4	-22.6	-32.1
17	Paper and paper products	86.0	85.2	94.2	0.9	-9.5
18	Printing and recording services	40.0	44.1	56.8	-9.2	-22.3
19	Coke and refined petroleum products	146.1	145.7	110.7	0.3	31.6
20	Chemicals and chemical products	55.3	59.5	67.2	-7.2	-11.4
21	Basic pharmaceutical products and pharmaceutical preparations	55.6	50.0	40.2	11.4	24.3
22	Rubber and plastic products	57.9	64.2	70.6	-9.8	-9.1
23	Other non-metallic mineral products	27.0	37.1	58.0	-27.3	-35.9
24	Basic metals	43.1	45.9	65.9	-6.1	-30.4
25	Fabricated metal products	63.4	89.8	96.1	-29.4	-6.6
26	Computers, electronic and optical products	4.9	4.8	14.1	2.6	-66.0
27	Electrical equipment	47.2	59.8	75.1	-21.2	-20.4
28	Machinery and equipment n. e. c.	28.7	36.0	70.6	-20.0	-49.1
29	Motor vehicles, trailers and semi-trailers	12.5	25.1	24.9	-50.3	0.9
30	Other transport equipment	4.4	10.4	126.7	-57.4	-91.8
31	Furniture	23.7	32.7	42.1	-27.5	-22.2
32	Other manufactured goods	44.9	47.0	45.2	-4.5	4.0
33	Repair and installation services of machinery and equipment	30.4	43.9	31.1	-30.6	41.0
	MAIN INDUSTRIAL GROUPINGS					
1	Energy	145.0	145.1	110.3	-0.1	31.6
2	Intermediate goods	54.8	60.8	73.3	-10.0	-17.1
3	Capital goods	21.1	38.0	58.9	-44.5	-35.6
4	Consumer Durables	29.7	37.6	46.9	-21.0	-20.0
5	Consumer Non-Durables	89.9	92.5	98.6	-2.8	-6.2

* Provisional data

Note:

1. The indices are calculated with infinite decimal figures and are rounded up to one decimal figure when published.
2. Percentage changes are calculated on the basis of indices with infinite decimal figures and are rounded up to one decimal figure when published.

Table 3: Annual rates of change of the Turnover Index in Industry for the Non - Domestic Market

Base year: 2005=100.0

Branch code	Branch name	August			Rate of change (%)	
		2012*	2011	2010	2012/2011	2011/2010
	OVERALL INDEX	178.9	150.7	148.0	18.7	1.9
B	MINING AND QUARRYING	96.4	126.4	142.5	-23.8	-11.3
05	Mining of coal and lignite	0.0	0.0	0.0	-	-
06	Extraction of crude petroleum and natural gas	0.0	0.0	0.0	-	-
07	Mining of metal ores	35.4	62.5	42.5	-43.3	47.0
08	Other mining and quarrying products	113.3	144.2	170.4	-21.4	-15.4
C	MANUFACTURING	176.8	148.0	144.8	19.5	2.2
10	Food	113.5	107.1	109.5	6.0	-2.1
11	Beverages	97.3	100.2	93.6	-2.9	7.1
12	Tobacco products	145.7	136.4	109.2	6.8	24.9
13	Textiles	15.8	12.2	23.3	29.9	-47.6
14	Wearing apparel	36.9	39.1	48.0	-5.6	-18.5
15	Leather and related products	2.3	0.5	1.9	398.8	-75.0
16	Wood and cork	82.9	81.8	50.0	1.4	63.5
17	Paper and paper products	111.1	125.5	114.9	-11.5	9.2
18	Printing and recording services	90.1	23.9	156.4	276.1	-84.7
19	Coke and refined petroleum products	388.1	258.3	262.2	50.2	-1.5
20	Chemicals and chemical products	115.4	145.6	122.4	-20.7	18.9
21	Basic pharmaceutical products and pharmaceutical preparations	179.2	142.0	209.2	26.2	-32.1
22	Rubber and plastic products	116.8	95.8	98.2	21.9	-2.5
23	Other non-metallic mineral products	93.2	45.8	103.5	103.5	-55.7
24	Basic metals	113.9	152.8	127.7	-25.5	19.7
25	Fabricated metal products	87.3	88.1	74.6	-0.9	18.1
26	Computers, electronic and optical products	31.3	20.4	31.9	53.3	-36.1
27	Electrical equipment	114.5	98.3	83.8	16.4	17.3
28	Machinery and equipment n. e. c.	75.2	84.4	115.6	-10.8	-27.0
29	Motor vehicles, trailers and semi-trailers	231.6	426.7	241.3	-45.7	76.8
30	Other transport equipment	13.7	20.7	18.0	-33.9	15.5
31	Furniture	76.3	59.9	100.8	27.3	-40.6
32	Other manufactured goods	71.2	44.6	72.9	59.5	-38.8
33	Repair and installation services of machinery and equipment	0.0	0.0	0.0	-	-
	MAIN INDUSTRIAL GROUPINGS					
1	Energy	388.1	258.3	262.2	50.2	-1.5
2	Intermediate goods	107.3	123.3	113.4	-13.0	8.8
3	Capital goods	67.7	74.8	70.1	-9.5	6.6
4	Consumer Durables	34.7	52.6	52.5	-34.0	0.3
5	Consumer Non-Durables	94.6	87.3	92.5	8.3	-5.6

* Provisional data

Note:

1. The indices are calculated with infinite decimal figures and are rounded up to one decimal figure when published.
2. Percentage changes are calculated on the basis of indices with infinite decimal figures and are rounded up to one decimal figure when published.

Table 4: Annual rates of change of the Turnover Index in Industry for the Eurozone Countries

Base year: 2005=100.0

Branch code	Branch name	August			Rate of change (%)	
		2012*	2011	2010	2012/2011	2011/2010
	OVERALL INDEX	130.3	133.5	114.3	-2.4	16.8
	INDUSTRIAL SECTIONS					
B	MINING AND QUARRYING	83.6	148.7	119.7	-43.8	24.3
C	MANUFACTURING	128.0	129.4	111.0	-1.1	16.6
	MAIN INDUSTRIAL GROUPINGS					
1	Energy	1658.4	1045.3	755.1	58.7	38.4
2	Intermediate goods	111.6	137.2	108.2	-18.7	26.7
3	Capital goods	37.1	61.0	44.8	-39.3	36.2
4	Consumer Durables	57.7	77.6	130.0	-25.7	-40.3
5	Consumer Non-Durables	82.6	78.6	87.7	5.1	-10.3

* Provisional data

Table 5: Annual rates of change of the Turnover Index in Industry for the Non - Eurozone Countries

Base year: 2005=100.0

Branch code	Branch name	August			Rate of change (%)	
		2012*	2011	2010	2012/2011	2011/2010
	OVERALL INDEX	208.6	162.6	168.9	28.3	-3.8
	INDUSTRIAL SECTIONS					
B	MINING AND QUARRYING	108.2	106.9	162.5	1.2	-34.2
C	MANUFACTURING	206.5	160.6	165.9	28.6	-3.2
	MAIN INDUSTRIAL GROUPINGS					
1	Energy	349.9	234.7	247.4	49.1	-5.1
2	Intermediate goods	105.4	114.8	118.4	-8.1	-3.1
3	Capital goods	106.6	89.9	103.4	18.6	-13.0
4	Consumer Durables	30.3	43.0	40.5	-29.5	6.2
5	Consumer Non-Durables	107.7	98.2	92.7	9.6	6.0

* Provisional data

Note:

1. The indices are calculated with infinite decimal figures and are rounded up to one decimal figure when published.
2. Percentage changes are calculated on the basis of indices with infinite decimal figures and are rounded up to one decimal figure when published.

Table 6: Evolution of the Turnover Index in Industry (Total Market)**Base year: 2005=100.0**

Year-month	Overall Index (Total Market)		Turnover Index in Industry for the Domestic Market		Turnover Index in Industry for the Non - Domestic Market	
	Index	Annual rate of change (%)	Index	Annual rate of change (%)	Index	Annual rate of change (%)
2011 VIII	106.2	3.1	91.4	1.5	150.7	1.9
IX	110.3	19.9	91.3	5.1	165.7	47.3
X	105.2	-8.2	85.3	-16.2	164.3	3.6
XI	109.0	0.4	95.2	0.0	147.0	-5.5
XII	120.4	2.4	104.5	1.6	165.6	-2.0
2012 I	109.8	12.9	88.4	3.4	175.2	33.3
II	105.4	6.8	85.3	-4.8	166.3	34.6
III	117.6	-4.8	92.0	-7.7	194.9	-0.1
IV	124.5	12.1	99.5	7.9	201.2	20.1
V	113.9	-3.8	86.3	-4.8	197.4	-2.6
VI	114.7	0.8	89.3	-3.4	191.7	7.4
VII	117.8	-7.4	95.4	-7.1	184.6	-8.0
VIII*	109.4	3.0	86.8	-5.0	178.9	18.7

*Provisional data

Table 7: Evolution of the Turnover Index in Industry for the Non – Domestic Market**Base year: 2005=100.0**

Year-month	Overall Index (Non - Domestic Market)		Turnover Index in Industry for Eurozone Countries		Turnover Index in Industry for Non - Eurozone Countries	
	Index	Annual rate of change (%)	Index	Annual rate of change (%)	Index	Annual rate of change (%)
2011 VIII	150.7	1.9	133.5	16.8	162.6	-3.8
IX	165.7	47.3	144.7	43.1	181.0	50.5
X	164.3	3.6	158.8	4.3	169.0	1.9
XI	147.0	-5.5	150.2	1.6	147.0	-8.9
XII	165.6	-2.0	157.6	5.7	175.5	-2.7
2012 I	175.2	33.3	125.2	7.5	205.1	45.7
II	166.3	34.6	132.1	-13.4	191.1	74.3
III	194.9	-0.1	163.9	1.3	217.3	-0.6
IV	201.2	20.1	137.5	-15.2	241.1	39.8
V	197.4	-2.6	172.2	4.0	215.3	-5.5
VI	191.7	7.4	159.3	-0.1	214.2	11.5
VII	184.6	-8.0	155.3	2.9	203.0	-12.6
VIII*	178.9	18.7	130.3	-2.4	208.6	28.3

*Provisional data

Note: 1. The indices are calculated with infinite decimal figures and are rounded up to one decimal figure when published.
2. Percentage changes are calculated on the basis of indices with infinite decimal figures and are rounded up to one decimal figure when published.

Table 8: Average indices and rates of change (%) of the 12-month periods of Turnover Index in Industry (Total Market)

Base year: 2005=100.0

Branch code	Branch name	Average Indices of 12-month periods			Rate of change (%) 2012/2011	Rate of change (%) 2011/2010
		Sept. 2011- Aug. 2012*	Sept. 2010- Aug. 2011	Sept. 2009- Aug. 2010		
	OVERALL INDEX	113.2	110.7	102.2	2.2	8.3
B	MINING AND QUARRYING	87.3	98.2	103.6	-11.0	-5.3
05	Mining of coal and lignite	68.7	146.9	154.5	-53.3	-4.9
06	Extraction of crude petroleum and natural gas	159.2	175.1	158.7	-9.1	10.3
07	Mining of metal ores	80.4	79.1	77.7	1.7	1.8
08	Other mining and quarrying products	84.7	93.5	101.7	-9.5	-8.0
C	MANUFACTURING	111.7	109.2	100.6	2.4	8.5
10	Food	107.1	108.8	109.5	-1.6	-0.7
11	Beverages	91.4	100.6	108.4	-9.2	-7.2
12	Tobacco products	77.9	76.7	86.7	1.6	-11.5
13	Textiles	36.4	47.0	53.1	-22.7	-11.5
14	Wearing apparel	42.5	52.2	63.7	-18.6	-18.1
15	Leather and related products	32.5	53.9	73.9	-39.7	-27.1
16	Wood and cork	41.0	51.2	64.5	-19.9	-20.6
17	Paper and paper products	103.7	111.7	113.8	-7.2	-1.8
18	Printing and recording services	49.4	66.8	86.7	-26.0	-23.0
19	Coke and refined petroleum products	190.4	161.8	126.0	17.7	28.4
20	Chemicals and chemical products	86.2	94.6	89.3	-8.8	5.9
21	Basic pharmaceutical products and pharmaceutical preparations	126.1	129.9	138.6	-2.9	-6.3
22	Rubber and plastic products	95.8	98.9	95.6	-3.2	3.5
23	Other non-metallic mineral products	39.8	55.6	80.8	-28.5	-31.2
24	Basic metals	106.1	113.9	90.9	-6.8	25.2
25	Fabricated metal products	76.4	82.8	85.4	-7.7	-3.0
26	Computers, electronic and optical products	34.2	39.1	46.2	-12.3	-15.5
27	Electrical equipment	90.5	87.9	85.9	3.0	2.4
28	Machinery and equipment n. e. c.	71.5	87.0	87.0	-17.8	0.0
29	Motor vehicles, trailers and semi-trailers	46.4	60.9	68.2	-23.8	-10.7
30	Other transport equipment	34.8	45.3	52.3	-23.3	-13.4
31	Furniture	45.7	64.7	84.0	-29.3	-23.1
32	Other manufactured goods	66.0	74.1	80.0	-10.9	-7.4
33	Repair and installation services of machinery and equipment	49.4	53.5	58.2	-7.7	-8.1
	MAIN INDUSTRIAL GROUPINGS					
1	Energy	190.0	161.8	126.1	17.5	28.3
2	Intermediate goods	86.5	94.7	91.2	-8.7	3.9
3	Capital goods	51.9	60.1	64.4	-13.5	-6.8
4	Consumer Durables	51.5	61.7	74.0	-16.6	-16.6
5	Consumer Non-Durables	89.6	94.6	101.1	-5.2	-6.5

*Provisional data

Note: 1. The indices are calculated with infinite decimal figures and are rounded up to one decimal figure when published.
2. Percentage changes are calculated on the basis of indices with infinite decimal figures and are rounded up to one decimal figure when published.

METHODOLOGICAL NOTES

Generally	The Turnover Index is being compiled since 2006.
Purpose of the index	The purpose of this index is to measure the monthly activity of the industrial sector in terms of value. Turnover comprises the totals invoiced (without VAT) by the observation units during the reference period and corresponds to the market sales of goods or services supplied to third parties. The purposes and the characteristics of the Turnover Index apply, as well, to the indices for the distinction between domestic and non-domestic turnover.
Legal basis	The compilation and publication of the Turnover Index is based on the framework of requirements of the Council Regulation (EC) No 1165/98 concerning short-term statistics (STS-R), as well as the amendment Regulation (EC) No 1158/05 of the European Parliament and Council, amending the Council Regulation (EC) No 1165/98. Furthermore, this index is governed by the Regulation (EEC) No.1893/2006 of the European Parliament and of the Council, by the Commission Regulation (EEC) No.656/2007 and by the Regulation (EEC) No.451/2008 of the Council.
Reference period	Month
Base year	2005=100.0.
Revision	The last revision of the Turnover Index in Industry with base year 2005=100.0 is done in the framework of the Short – Term Statistics (STS) Council Regulation (EC) No 1165/98 concerning short-term statistics. According to this regulation the index in question is updated every five years, in years ending in 0 or 5.
Statistical classifications	At the level of categories of economic activities the new Eurostat classification NACE Rev. 2 was used (Regulation 1893/2006), while at the level of main industrial groups, the allocation of two-digit and three-digit NACE Rev. 2 headings to categories of aggregate classification was used, in accordance with the Commission Regulation 656/2007. At product level, the new Eurostat classification CPA 2008 was used, according to the Council Regulation 451/2008.
Geographical coverage	The Index covers the whole country.
Coverage of economic activities	The Turnover Index in Industry covers the whole country and is compiled for all activities listed in Sections C (mining and quarrying) and D (manufacturing) of the NACE Rev.2 classification.
Computation of the Index	The Turnover Index in Industry is a fixed base index. This index is calculated initially at the four-digit level of economic activity and subsequently, with the implementation of appropriate weighting coefficients, the index is calculated at higher levels (three-level, two-level and one-level of economic activity) or at the level of Main Industrial Groupings (MIGs).
Publication of data	The Turnover Index with base year 2005=100.0 is being released since April 2009 with January 2009 as first reference month. Data with base year 2005=100.0 are available from January 2000 onwards.
References	More information about the methodology concerning the compilation and calculation of the index and for the time series is available on the Hellenic Statistical Authority (ELSTAT) website (www.statistics.gr).