



HELLENIC REPUBLIC



HELLENIC STATISTICAL AUTHORITY

Piraeus, 14 June 2013

## PRESS RELEASE

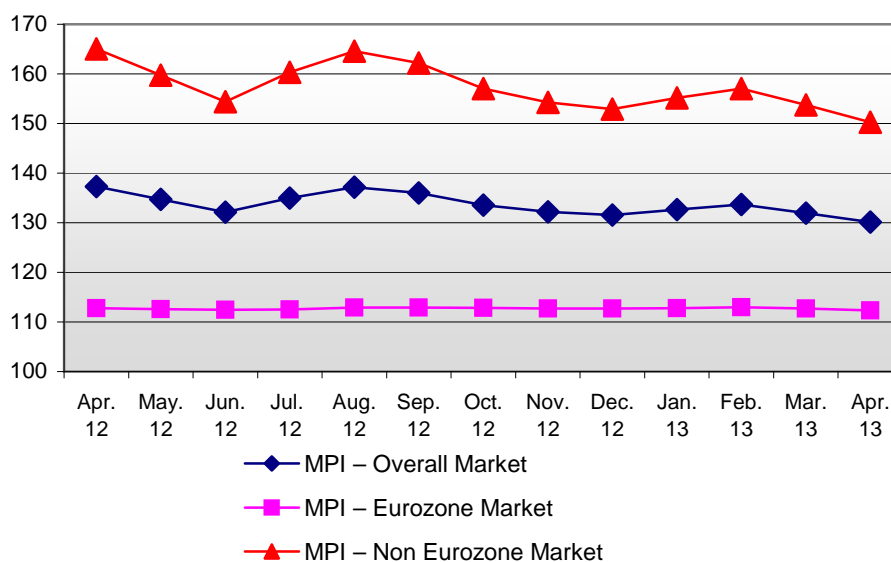
### IMPORT PRICE INDEX IN INDUSTRY : April 2013

The Import Price Index in Industry (MPI) in April 2013 compared with April 2012 recorded a decrease of 5.2%. The index in April 2012 had recorded an increase of 5.2% compared with April 2011 (Table 1.II).

The MPI in April 2013 compared with March 2013 recorded a decrease of 1.4%. The index in April 2012 had recorded a decrease of 0.5% compared with March 2012 (Table 1.I).

The twelve-month average index, from May 2012 to April 2013, compared with the same index of the period from May 2011 to April 2012, increased by 1.0%. The previous year the twelve-month average index had increased by 7.4% (Table 4).

Evolution of Import Price Index (MPI) in Industry  
(2005=100.0)



Information:

Economic and Short-  
Term Indicators Division  
Wholesale Prices and  
Price Indices Section

Helen Mastrospyrou  
Tel: 0030 213 1352740  
Fax: 0030 213 1352714

### **1. Monthly rates of change of April 2013 compared with March 2013.**

Import Prices in April 2013 decreased by 1.4% compared with the previous month, March 2013, due to the monthly changes of the sub-indices of the markets zones:

- a. The MPI of the Eurozone Market decreased by 0.3% (Table 2.I).
- b. The MPI of the Non-Eurozone Market decreased by 2.3% (Table 3.I).

### **2. Annual rates of change of April 2013 compared with April 2012.**

Import prices in April 2013 decreased by 5.2% compared with the same month of the previous year, April 2012, due to the annual changes of the sub-indices of the markets zones:

- a. The MPI of the Eurozone Market decreased by 0.4% (Table 2.II).
- b. The MPI of the Non-Eurozone Market decreased by 9.0% (Table 3.II).

**Table 1: Import Price Index (MPI) in Industry – Overall Market**

**Base year: 2005=100.0**

**I) Monthly changes**

<b>Codes</b>	<b>Main Industrial Groups - MIGs</b>	<b>Weighting Coefficients</b>	<b>April 2013</b>	<b>March 2013</b>	<b>Change (%)</b>	<b>April 2012</b>	<b>March 2012</b>	<b>Change (%)</b>
20	Overall Market	100,000	130.1	132.0	-1.4	137.3	137.9	-0.5
40	Intermediate Goods	27,814	121.7	122.0	-0.2	122.4	122.3	0.1
50	Capital Goods	22,901	102.6	103.1	-0.4	102.9	102.9	0.0
60	Durable Consumer Goods	5,398	103.9	103.8	0.0	103.7	103.7	0.0
70	Non-Durable Consumer Goods	25,215	113.2	113.2	0.0	113.0	112.8	0.1
90	Energy	18,672	206.9	215.7	-4.1	244.1	248.0	-1.6

**II) Annual changes**

<b>Codes</b>	<b>Main Industrial Groups - MIGs</b>	<b>Weighting Coefficients</b>	<b>April</b>			<b>Change (%)</b>	
			<b>2013</b>	<b>2012</b>	<b>2011</b>	<b>2013/2012</b>	<b>2012/2011</b>
20	Overall Market	100,000	130.1	137.3	130.5	-5.2	5.2
40	Intermediate Goods	27,814	121.7	122.4	121.3	-0.6	0.9
50	Capital Goods	22,901	102.6	102.9	103.5	-0.3	-0.5
60	Durable Consumer Goods	5,398	103.9	103.7	102.8	0.2	0.8
70	Non-Durable Consumer Goods	25,215	113.2	113.0	111.8	0.2	1.1
90	Energy	18,672	206.9	244.1	210.6	-15.3	15.9

*Note:*

1. The indices are calculated with infinite decimal figures and are rounded up to one decimal figure when published

2. Percentage changes are calculated on the basis of the indices with five decimal figures and are rounded up to one decimal figure when published.

**Table 2: Import Price Index (MPI) in Industry – Eurozone Market**

**Base year: 2005=100.0**

**I) Monthly changes**

<b>Codes</b>	<b>Main Industrial Groups - MIGs</b>	<b>Weighting Coefficients</b>	<b>April 2013</b>	<b>March 2013</b>	<b>Change (%)</b>	<b>April 2012</b>	<b>March 2012</b>	<b>Change (%)</b>
20	Overall Market	53,089	112.3	112.7	-0.3	112.8	112.7	0.1
40	Intermediate Goods	16,651	120.7	120.9	-0.2	121.0	120.6	0.3
50	Capital Goods	15,115	101.8	102.4	-0.6	102.2	102.2	0.0
60	Durable Consumer Goods	3,113	105.0	105.0	0.0	104.9	104.9	0.0
70	Non-Durable Consumer Goods	17,446	112.4	112.4	0.0	112.2	112.2	0.0
90	Energy	764	166.0	175.2	-5.3	189.9	190.3	-0.2

**II) Annual changes**

<b>Codes</b>	<b>Main Industrial Groups - MIGs</b>	<b>Weighting Coefficients</b>	<b>April</b>			<b>Change ( %)</b>	
			<b>2013</b>	<b>2012</b>	<b>2011</b>	<b>2013/2012</b>	<b>2012/2011</b>
20	Overall Market	53,089	112.3	112.8	112.1	-0.4	0.7
40	Intermediate Goods	16,651	120.7	121.0	119.7	-0.2	1.1
50	Capital Goods	15,115	101.8	102.2	103.1	-0.4	-0.9
60	Durable Consumer Goods	3,113	105.0	104.9	103.4	0.1	1.4
70	Non-Durable Consumer Goods	17,446	112.4	112.2	111.4	0.2	0.7
90	Energy	764	166.0	189.9	172.0	-12.6	10.4

*Note:*

1. The indices are calculated with infinite decimal figures and are rounded up to one decimal figure when published

2. Percentage changes are calculated on the basis of the indices with five decimal figures and are rounded up to one decimal figure when published.

**Table 3: Import Price Index (MPI) in Industry – Non Eurozone Market**

**Base year: 2005=100.0**

**I) Monthly changes**

<b>Codes</b>	<b>Main Industrial Groups - MIGs</b>	<b>Weighting Coefficients</b>	<b>April 2013</b>	<b>March 2013</b>	<b>Change (%)</b>	<b>April 2012</b>	<b>March 2012</b>	<b>Change (%)</b>
20	Overall Market	46,911	150.2	153.8	-2.3	165.0	166.5	-0.9
40	Intermediate Goods	11,163	123.1	123.5	-0.3	124.6	124.7	-0.1
50	Capital Goods	7,786	104.3	104.4	-0.1	104.3	104.3	0.0
60	Durable Consumer Goods	2,285	102.3	102.2	0.1	102.1	102.1	0.0
70	Non-Durable Consumer Goods	7,769	114.9	115.1	-0.2	114.7	114.1	0.5
90	Energy	17,908	208.6	217.4	-4.1	246.4	250.4	-1.6

**II) Annual changes**

<b>Codes</b>	<b>Main Industrial Groups - MIGs</b>	<b>Weighting Coefficients</b>	<b>April</b>			<b>Change ( %)</b>	
			<b>2013</b>	<b>2012</b>	<b>2011</b>	<b>2013/2012</b>	<b>2012/2011</b>
20	Overall Market	46,911	150.2	165.0	151.4	-9.0	9.0
40	Intermediate Goods	11,163	123.1	124.6	123.8	-1.2	0.6
50	Capital Goods	7,786	104.3	104.3	104.2	-0.1	0.2
60	Durable Consumer Goods	2,285	102.3	102.1	102.1	0.2	0.0
70	Non-Durable Consumer Goods	7,769	114.9	114.7	112.5	0.1	2.0
90	Energy	17,908	208.6	246.4	212.2	-15.3	16.1

*Note:*

1. The indices are calculated with infinite decimal figures and are rounded up to one decimal figure when published

2. Percentage changes are calculated on the basis of the indices with five decimal figures and are rounded up to one decimal figure when published.

Table 4: Changes of Import Price Index (MPI) in Industry

Base year: 2005=100.0

Year and Month	Overall Index	Monthly Changes (%)	Annual Changes (%)	12-month moving average	12-month moving average changes
<b>2011 :</b> 1	124.0	0.8	6.1	120.6	6.5
2	126.3	1.9	7.6	121.3	6.5
3	129.4	2.4	8.6	122.2	6.4
4	130.5	0.8	8.0	123.0	6.3
5	128.1	-1.8	6.5	123.6	6.2
6	129.0	0.7	6.7	124.3	6.2
7	130.6	1.2	8.7	125.2	6.4
8	128.3	-1.7	6.4	125.8	6.6
9	129.6	1.0	8.3	126.6	6.9
10	130.0	0.2	8.6	127.5	7.2
11	131.3	1.0	8.5	128.3	7.6
12	131.9	0.5	7.2	129.1	7.6
<i>Year and Month</i>	<i>129.1</i>			<i>129.1</i>	<i>7.6</i>
<b>2012 :</b> 1	134.8	2.2	8.7	130.0	7.8
2	136.2	1.0	7.8	130.8	7.8
3	137.9	1.3	6.6	131.5	7.7
4	137.3	-0.5	5.2	132.1	7.4
5	134.7	-1.9	5.1	132.6	7.3
6	132.1	-1.9	2.4	132.9	6.9
7	135.0	2.2	3.4	133.3	6.5
8	137.2	1.6	6.9	134.0	6.5
9	136.0	-0.8	4.9	134.5	6.2
10	133.6	-1.8	2.8	134.8	5.7
11	132.2	-1.0	0.7	134.9	5.1
12	131.6	-0.5	-0.3	134.9	4.5
<i>Year and Month</i>	<i>134.9</i>			<i>134.9</i>	<i>4.5</i>
<b>2013 :</b> 1	132.7	0.8	-1.6	134.7	3.6
2	133.6	0.7	-1.8	134.5	2.8
3	132.0	-1.3	-4.3	134.0	1.9
4	130.1	-1.4	-5.2	133.4	1.0
5					
6					
7					
8					
9					
10					
11					
12					
<i>Year and Month</i>					

Note:

1. The indices are calculated with infinite decimal figures and are rounded up to one decimal figure when published

2. Percentage changes are calculated on the basis of the indices with five decimal figures and are rounded up to one decimal figure when published.

## METHODOLOGICAL NOTES

**Generally** The Import Price Index (MPI) in Industry, in its current form, is being released since February 2005. The MPI replaced the Wholesale Price Index of Finished Products of foreign origin which was compiled since 1963.

**Purpose of the index – definitions** The purpose of the Import Price Index in Industry (MPI) is to measure the monthly rates of change in the prices of goods that are imported in the economic territory.

The Import Price Index is a monthly index and it is composed by the sub-indices of the imports prices of the two market zones: the euro-zone and the non-euro-zone countries.

The collected prices for the imported goods are CIF prices (i.e. cost, insurance, freight), excluding duties and taxes.

The selected price data for the MPI compilation are collected from units-enterprises that import the goods. The prices refer mainly to the transactions between the resident enterprises that import products and the enterprises in the rest of the world that export products to Greece.

**Legal basis** The compilation of MPI is governed by Council Regulation (EEC) No.1165/98 “concerning short-term statistics” and by the Regulation No.1158/05 (amending the above mentioned Regulation) of the European Parliament and of the Council. Furthermore, the MPI is governed by the Regulation (EEC) No.1893/2006 of the European Parliament and of the Council, by the Commission Regulation (EEC) No.656/2007 and by the Regulation (EEC) No.451/2008 of the Council.

**Reference period** Month

**Base year** 2005=100.0.

**Revision** The MPI is a fixed base index. Pursuant to the provisions of Council Regulation No.1165/98 concerning short-term statistics, the index in question is updated every five (5) years in years ending in 0 or 5.

**Statistical classifications** At the level of categories of economic activities the new Eurostat classification NACE Rev.2 is used (Regulation 1893/2006), while at the level of main industrial groups, the allocation of two-digit and three-digit NACE Rev.2 headings to categories of aggregate classification is used, in accordance with the Council Regulation 656/2007. At product level, the new Eurostat classification CPA 2008 is used, according to the Council Regulation 451/2008.

**Geographical coverage** The Index covers the whole of the country, with data from Attica and other 32 prefectures of the country.

**Coverage of economic activities** The index covers the sections of mining-querying manufacturing, energy and natural gas, the main industrial groups, and all the levels of economic activities (divisions, groups, classes) and the level of products.

**Statistical survey** The data are collected from approximately 1011 enterprises and the total number of observations (prices) is approximately 2524. More specifically, out of the 458 imported products that are selected, 390 products are imported from euro zone countries and 285 products are imported from non euro zone countries.

**Publication of data** The MPI with the new base year (2005) has been released since March 2009, with February 2009 as first reference month. Data with base year 2005=100.0 are available from February 2000 onwards.

**References** More information on the methodology concerning the compilation and calculation of the index and for the time series is available on the EL.STAT, website:

[http://www.statistics.gr/portal/page/portal/ESYE/PAGE-themes?p\\_param=A0503](http://www.statistics.gr/portal/page/portal/ESYE/PAGE-themes?p_param=A0503).