



HELLENIC REPUBLIC
HELLENIC STATISTICAL AUTHORITY

Piraeus, August 11, 2022

PRESS RELEASE

ISSUING OF MOTOR VEHICLE LICENSES: JULY 2022

The Hellenic Statistical Authority announces that in July 2022, 20,456 road motor cars (both new and used from abroad) were put into circulation for the first time, recording a 2.7% decrease compared with the corresponding month of 2021 when the number of road motor cars was 21,018. In July 2021, a 10.3% increase had been observed in comparison with the corresponding month of 2020 (Table 1, Graphs 1,2,3,5). A total number of 11,706 new cars were put into circulation in July 2022 compared with 11,611 in July 2021, recording a 0.8% increase.

The new motorcycles over 50cc (both new and used from abroad) that were put into circulation for the first time in July 2022 amounted to 7,491, against 6,300 in 2021, thus recording a 18.9% increase. In July 2021, a 10.1% increase had been observed in comparison with the corresponding month of 2020 (Table 1, Graph 4). Out of the above motorcycles 7,002 were new, while the corresponding figure in July 2021 was 5,700, recording a 22.8% increase.

During the period January - July 2022, 131,476 road motor cars (both new and used from abroad) were put into circulation for the first time, representing an increase of 3.8% compared to the corresponding period of 2021 when the number of road motor cars was 126,661. During the period January - July 2021 an increase of 28.7% had been observed in comparison with the corresponding period of 2020 (Table 3, Graphs 6,7). Out of the above number of road motor cars that were put into circulation, from January to July 2022, 71,541 were new, while the corresponding number during the respective period of 2021 was 75,118, recording a decrease of 4.8%.

During the period January - July 2022 the circulation of new motorcycles over 50cc (both new and used from abroad) amounted to 39,177 against 31,077 in 2021, thus representing a 26.1% increase. An increase of 36.4% had been observed during the period January - July 2021 in comparison with the corresponding period of 2020 (Table 3, Graphs 6,7). A total number of 36,211 new motorcycles were put into circulation, from January to July 2022, compared with 28,266 during the corresponding period of 2021, recording a 28.1% increase.

Information on methodological issues:

Sectoral Statistics Division

Transport Statistics Section

Pota Tzortzi, Konstantinos Menexes

Tel: +30 213 135 2187, +30 213 135 3055

e-mail: p.tzortzi@statistics.gr, k.menexes@statistics.gr

Information for data provision:

Tel: +30 213 135 2022

e-mail: data.dissem@statistics.gr

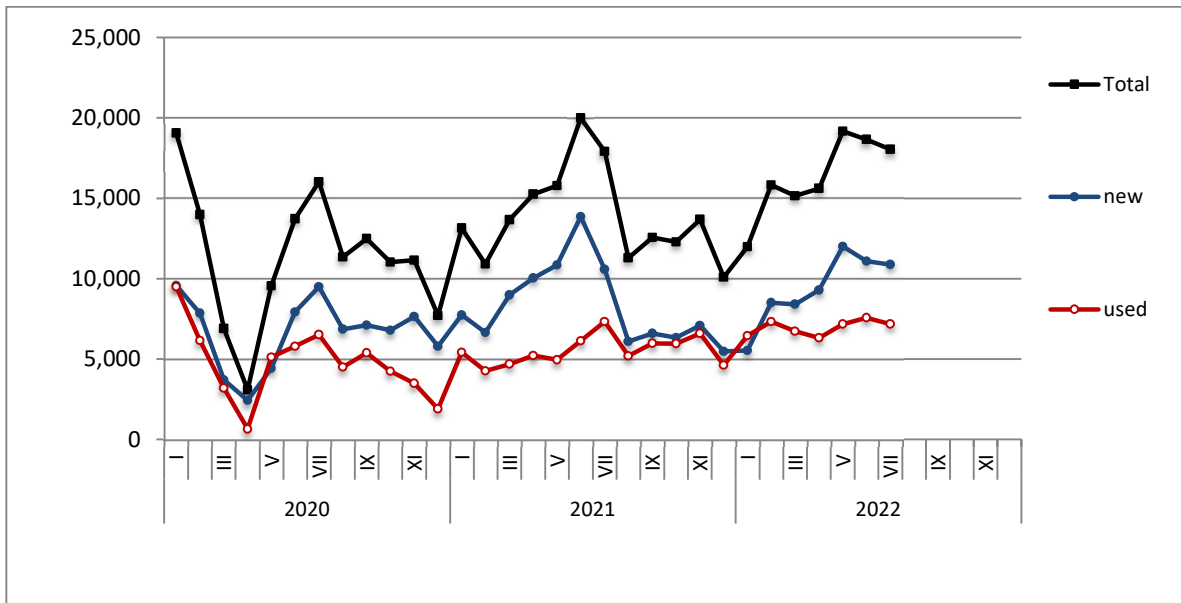
Table 1. Road motor vehicles, both new and used, put into circulation for the first time in Greece: July 2020 - 2022															
Category of Road Motor Vehicles	July									Change (%)					
	2020			2021			2022			2021/2020			2022/2021		
	Total	New	Used	Total	New	Used	Total	New	Used	Total	New	Used	Total	New	Used
Greece, total															
Road Motor Vehicles,total	24,778	15,634	9,144	27,318	17,311	10,007	27,947	18,708	9,239	10.3%	10.7%	9.4%	2.3%	8.1%	-7.7%
1. Road motor cars	19,054	10,293	8,761	21,018	11,611	9,407	20,456	11,706	8,750	10.3%	12.8%	7.4%	-2.7%	0.8%	-7.0%
Passenger Cars	16,024	9,503	6,521	17,907	10,587	7,320	18,046	10,875	7,171	11.8%	11.4%	12.3%	0.8%	2.7%	-2.0%
Buses	105	42	63	127	45	82	101	24	77	21.0%	7.1%	30.2%	-20.5%	-46.7%	-6.1%
Lorries	2,925	748	2,177	2,984	979	2,005	2,309	807	1,502	2.0%	30.9%	-7.9%	-22.6%	-17.6%	-25.1%
2. Motorcycles > 50 cc	5,724	5,341	383	6,300	5,700	600	7,491	7,002	489	10.1%	6.7%	56.7%	18.9%	22.8%	-18.5%
Prefecture of Attica															
Road Motor Vehicles,total	12,017	9,086	2,931	13,772	10,090	3,682	15,075	11,215	3,860	14.6%	11.0%	25.6%	9.5%	11.1%	4.8%
1. Road motor cars	9,496	6,629	2,867	11,115	7,554	3,561	12,283	8,527	3,756	17.0%	14.0%	24.2%	10.5%	12.9%	5.5%
Passenger Cars	8,553	6,221	2,332	9,915	6,974	2,941	11,166	7,927	3,239	15.9%	12.1%	26.1%	12.6%	13.7%	10.1%
Buses	38	13	25	34	16	18	47	14	33	-10.5%	23.1%	-28.0%	38.2%	-12.5%	83.3%
Lorries	905	395	510	1,166	564	602	1,070	586	484	28.8%	42.8%	18.0%	-8.2%	3.9%	-19.6%
2. Motorcycles > 50 cc	2,521	2,457	64	2,657	2,536	121	2,792	2,688	104	5.4%	3.2%	89.1%	5.1%	6.0%	-14.0%

Table 2. Road motor vehicles, both new and used, put into circulation for the first time in Greece: August 2020 – July 2022

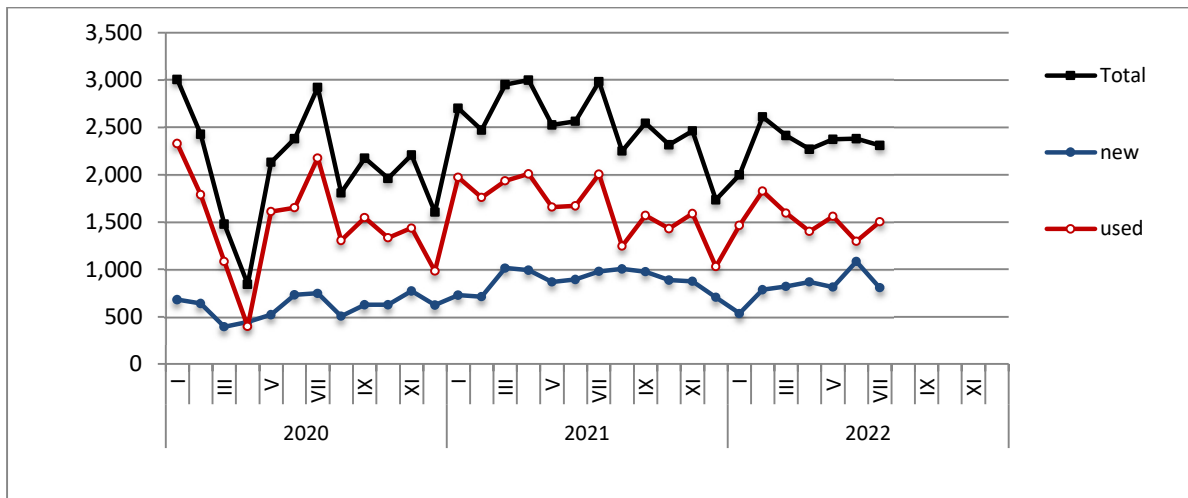
Category of Road Motor Vehicles	Average Aug. 2020 - Jul. 2021			Average Aug. 2021 - Jul. 2022			Change (%)		
							Average Aug. 2021 - Jul. 2022 / Average Aug. 2020 - Jul. 2021		
	Total	New	Used	Total	New	Used	Total	New	Used
Greece, total									
Road Motor Vehicles,total	19,810	12,951 *	6,859 *	21,690	13,346	8,344	9.5%	3.0%	21.7%
1. Road motor cars	15,904	9,381 *	6,523 *	16,947	8,981	7,966	6.6%	-4.3%	22.1%
Passenger Cars	13,364	8,572 *	4,792 *	14,527	8,106	6,421	8.7%	-5.4%	34.0%
Buses	126	30	96	114	28	86	-9.5%	-6.7%	-10.4%
Lorries	2,414	779	1,635	2,306	847	1,459	-4.5%	8.7%	-10.8%
2. Motorcycles > 50 cc	3,906	3,570	336	4,743	4,365	378	21.4%	22.3%	12.5%

* Corrected data

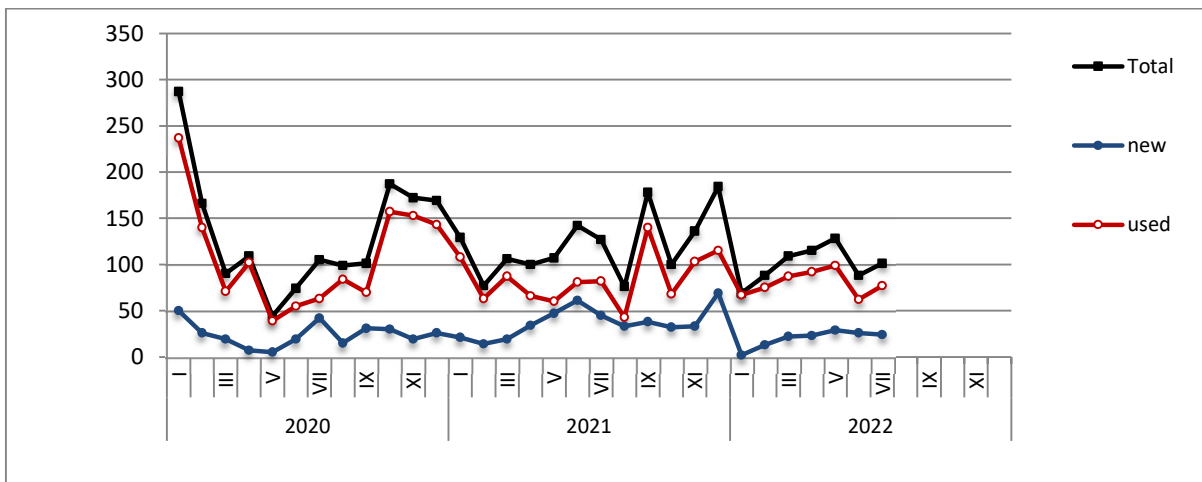
Graph 1: Passenger Cars (January 2020 – July 2022)



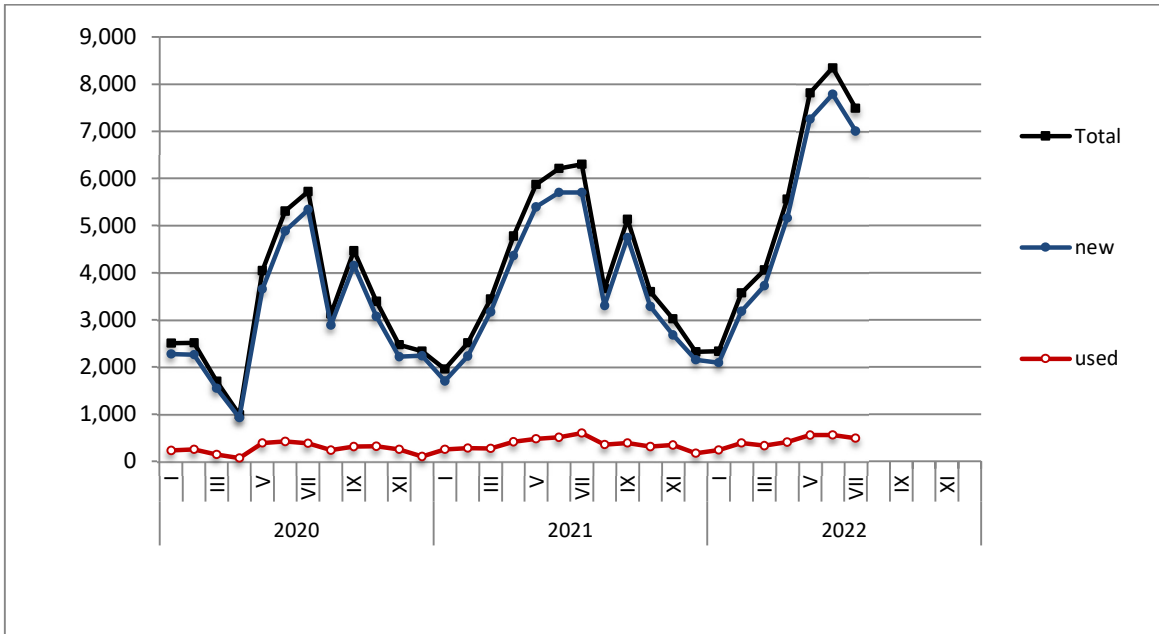
Graph 2: Lorries (January 2020 – July 2022)



Graph 3: Buses (January 2020 – July 2022)



Graph 4: Motorcycles (January 2020 – July 2022)



Graph 5: New Registrations of Motor Vehicles (July 2022)

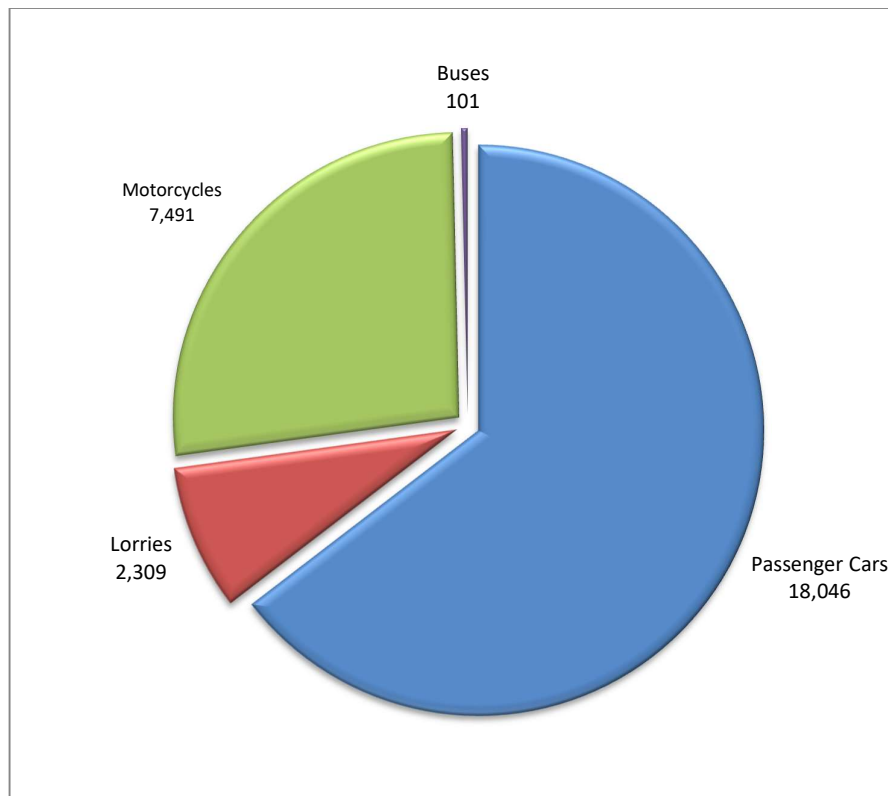
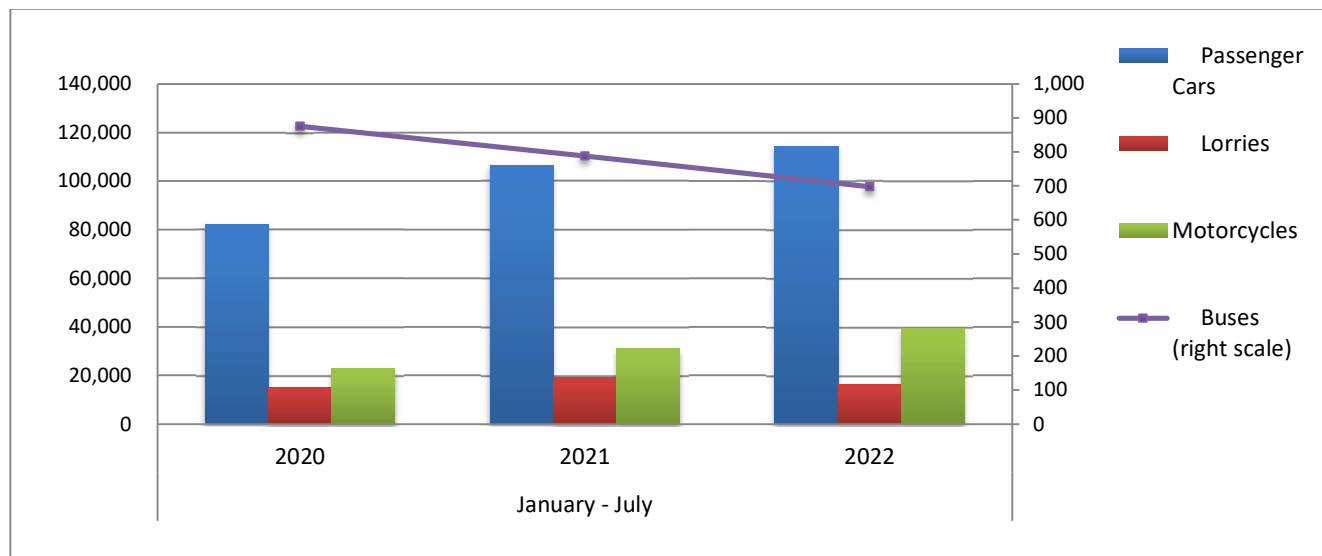


Table 3. Road motor vehicles, both new and used, put into circulation for the first time in Greece: January - July, years 2020 till 2022															
Category of Road Motor Vehicles	January - July									Change (%)					
	2020			2021			2022			2021/2020			2022/2021		
	Total	New	Used	Total	New	Used	Total	New	Used	Total	New	Used	Total	New	Used
Greece, total															
Road Motor Vehicles, total	121,171	70,641	50,530	157,738	103,384	54,354	170,653	107,752	62,901	30.2%	46.4%	7.6%	8.2%	4.2%	15.7%
1. Road motor cars	98,392	49,748	48,644	126,661	75,118	51,543	131,476	71,541	59,935	28.7%	51.0%	6.0%	3.8%	-4.8%	16.3%
Passenger Cars	82,321	45,424	36,897	106,669	68,688	37,981	114,420	65,692	48,728	29.6%	51.2%	2.9%	7.3%	-4.4%	28.3%
Buses	875	168	707	788	241	547	698	139	559	-9.9%	43.5%	-22.6%	-11.4%	-42.3%	2.2%
Lorries	15,196	4,156	11,040	19,204	6,189	13,015	16,358	5,710	10,648	26.4%	48.9%	17.9%	-14.8%	-7.7%	-18.2%
2. Motorcycles > 50 cc	22,779	20,893	1,886	31,077	28,266	2,811	39,177	36,211	2,966	36.4%	35.3%	49.0%	26.1%	28.1%	5.5%
Prefecture of Attica															
Road Motor Vehicles, total	59,043	42,729	16,314	84,122	63,956	20,166	90,073	64,953	25,120	42.5%	49.7%	23.6%	7.1%	1.6%	24.6%
1. Road motor cars	47,982	32,117	15,865	69,733	50,203	19,530	73,011	48,678	24,333	45.3%	56.3%	23.1%	4.7%	-3.0%	24.6%
Passenger Cars	42,811	29,702	13,109	62,458	46,692	15,766	65,787	44,829	20,958	45.9%	57.2%	20.3%	5.3%	-4.0%	32.9%
Buses	280	71	209	185	68	117	277	64	213	-33.9%	-4.2%	-44.0%	49.7%	-5.9%	82.1%
Lorries	4,891	2,344	2,547	7,090	3,443	3,647	6,947	3,785	3,162	45.0%	46.9%	43.2%	-2.0%	9.9%	-13.3%
2. Motorcycles > 50 cc	11,061	10,612	449	14,389	13,753	636	17,062	16,275	787	30.1%	29.6%	41.6%	18.6%	18.3%	23.7%

Graph 6. New Motor Vehicles Circulation Licenses: January – July, years 2020 till 2022



Graph 7. New Registrations of Motor Vehicles: January – July 2022

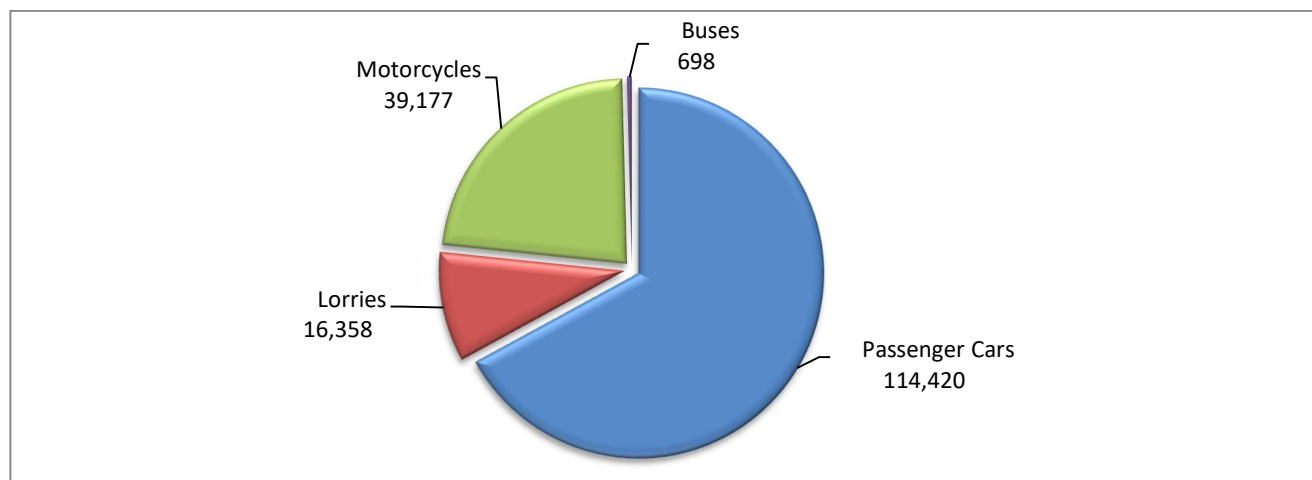


Table 4
Sales of new and used passenger cars by make: July 2022 and January - July 2022

Make	Passenger cars			
	July		January - July	
	new	used	new	used
ALFA ROMEO	15	37	73	402
ALPINA	-	-	2	1
ASTON MARTIN	-	-	-	1
AUDI	271	91	2,082	708
BENTLEY	-	-	4	1
BMW	367	158	2,470	1,102
BURSTNE	-	-	-	1
CADILLAC	-	-	-	2
CAPRON	-	-	4	3
CARTHAGO	-	-	1	-
CHEVROLET	-	39	-	295
CHRYSLER	-	1	-	7
CITROEN	150	293	661	1,920
CITROEN / DS	135	31	1,754	111
CUPRA	31	-	290	2
DACIA	280	203	1,924	1,257
DAIHATSU	-	2	-	10
DETHLEFFS	-	-	-	1
DODGE	-	-	-	2
DS	258	3	706	9
ETRUSCO	-	-	1	-
EURA MOBIL	-	-	-	1
FERRARI	-	1	-	12
FIAT	794	403	3,360	2,647
FORD	336	528	1,998	3,181
GENERAL MOTORS	-	-	-	1
HOBBY	-	1	-	1
HOBBY WOHNWAGEN	-	-	-	1
HONDA	40	74	188	399
HYMER	-	-	-	2
HYUNDAI	824	605	6,041	4,541
IVECO S.p.a/LAIKA CARAVANS SpA	-	-	-	2
JAGUAR	15	10	71	66
JEEP	57	32	1,307	232
JIAYUAN	-	-	1	-
KARMANN-MOBIL	-	-	-	1
KERABOSS	-	-	1	1
KIA	413	131	3,380	1,036
KNAUS	-	2	-	7
LADA	-	2	-	5
LAMBORGHINI	-	-	4	7
LANCIA	-	5	-	53
LAND ROVER	80	51	312	377
LES DAUPHINS	-	-	-	1
LEVC	1	-	4	-
LEXUS	27	7	98	38
LMC	-	-	-	1
LOTUS	-	-	-	1

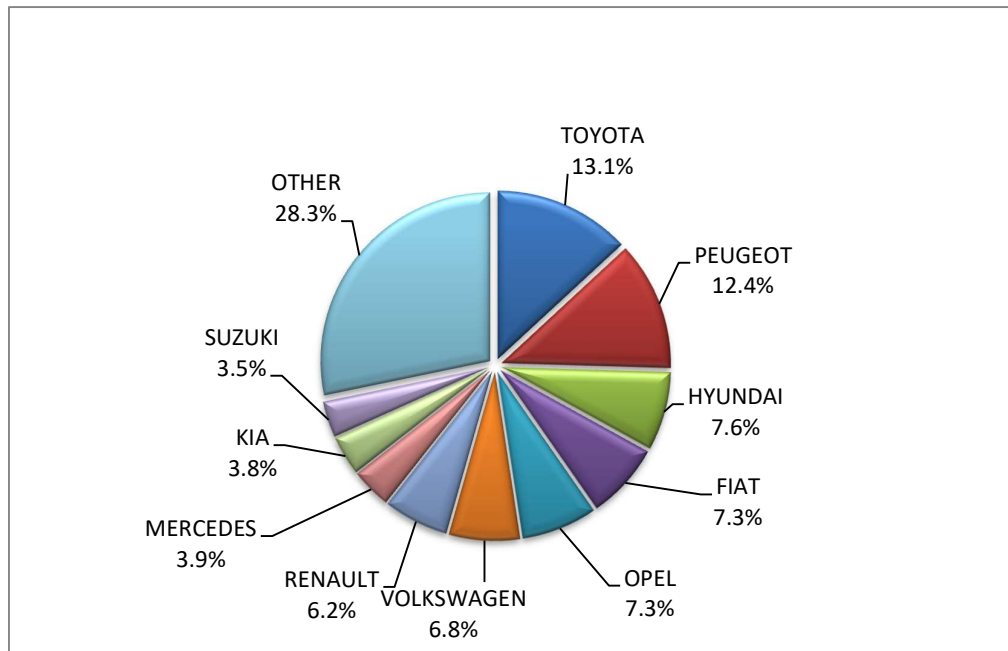
Table 4 (cont)
Sales of new and used passenger cars by make: July 2022 and January - July 2022

Make	Passenger cars			
	July		January - July	
	new	used	new	used
MASERATI	2	-	13	9
MAZDA	99	32	414	205
MC LOUIS S.P.A	-	-	-	1
MERCEDES	420	308	3,274	2,163
MERCEDES ¹	1	-	11	-
MINI	93	40	1,018	272
MINI MAFER	-	-	-	1
MITSUBISHI	71	104	393	624
MOBILVETTA DESI	-	-	-	1
MORGAN	-	-	-	1
NISSAN	186	543	2,094	3,601
NISSAN ¹	-	-	21	-
OPEL	790	561	4,017	3,506
PEUGEOT	1,346	473	5,034	2,958
PEUGEOT ²	-	-	23	-
PORSCHE	19	32	98	237
POSSL	1	-	1	-
QUATTRO	-	-	-	1
RANGE ROVER	-	-	-	20
RENAULT	678	892	1,818	5,477
RIMOR	-	-	1	-
ROLLER TEAM	-	-	1	-
SAAB	-	1	-	6
SEAT	104	67	680	512
SKODA	305	170	1,713	1,127
SMART	4	115	29	1,191
SSANGYONG	-	2	-	10
SUBARU	8	7	64	44
SUN LIVING	-	-	-	1
SUZUKI	378	159	1,964	1,162
TATA	-	-	-	1
TESLA	13	1	290	19
TOYOTA	1,423	599	9,857	4,591
TRIGANO	-	-	-	2
VOLKSWAGEN	736	348	5,056	2,411
VOLVO	103	7	1,068	122
WEINSBERG	-	-	-	3
ZHIDOU, ZD, ELARIS	1	-	3	-
TOTAL	10,875	7,171	65,692	48,728

1 : With 2nd/3rd stage manufacturer in Greece.

2 : With 2nd/3rd stage manufacturer abroad.

Graph 8. Sales of new passenger cars by make (July 2022)



Graph 9. Sales of new passenger cars by make (January – July 2022)

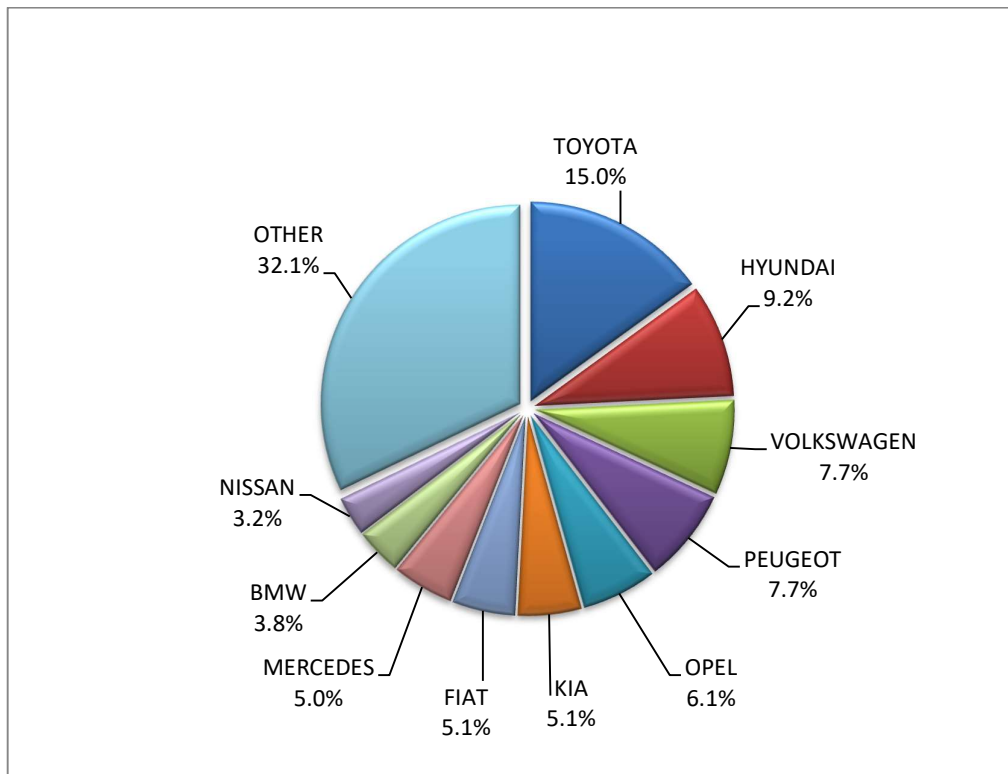


Table 5
Sales of new and used lorries by make: July 2022 and January - July 2022

Make	Lorries			
	July		January - July	
	new	used	new	used
AIXAM	-	-	-	1
ASIA MOTOR	-	-	-	1
BYD	-	-	1	-
CHEVROLET	-	-	-	1
CHRYSLER	-	1	-	3
CITROEN	50	54	383	358
DACIA	-	8	-	41
DAF	1	51	2	334
DAF ¹	11	-	38	1
DAIHATSU	-	-	-	3
DFSK MOTOR CO.L	-	-	-	1
DODGE	-	-	-	3
FCA US LLC	-	-	-	2
FIAT	176	143	1,241	972
FIAT SOMMER GMBH	15	-	15	-
FIAT-IVECO	-	1	-	17
FORD	151	165	905	1,330
FORD ¹	4	-	36	1
GINAF	-	1	-	1
GOUPIL	-	-	1	-
GOUPIL, MEGA, POLARIS, GEM	1	-	1	-
HYUNDAI	-	4	-	16
ISUZU	17	10	96	87
ISUZU ¹	-	-	2	-
IVECO	7	29	22	188
IVECO ¹	14	-	25	-
IVECO ²	-	-	-	1
IVECO MAGIRUS	-	7	-	20
JEEP	3	1	68	10
KASSBOHRER	-	-	1	-
KIA	-	2	-	7
KIEFER	-	-	-	1
LADA	-	-	-	1
LAND ROVER	-	2	2	8
LEVC	-	-	6	-
MAHINDRA	-	-	-	1
MAN	-	98	11	597
MAN ¹	2	-	17	1
MAXUS, LDV	2	-	9	1
MAZDA	-	2	-	17
MERCEDES	18	364	173	2,557
MERCEDES ¹	16	4	141	11
MERCEDES ²	-	-	1	1
MITSUBISHI	2	32	163	245

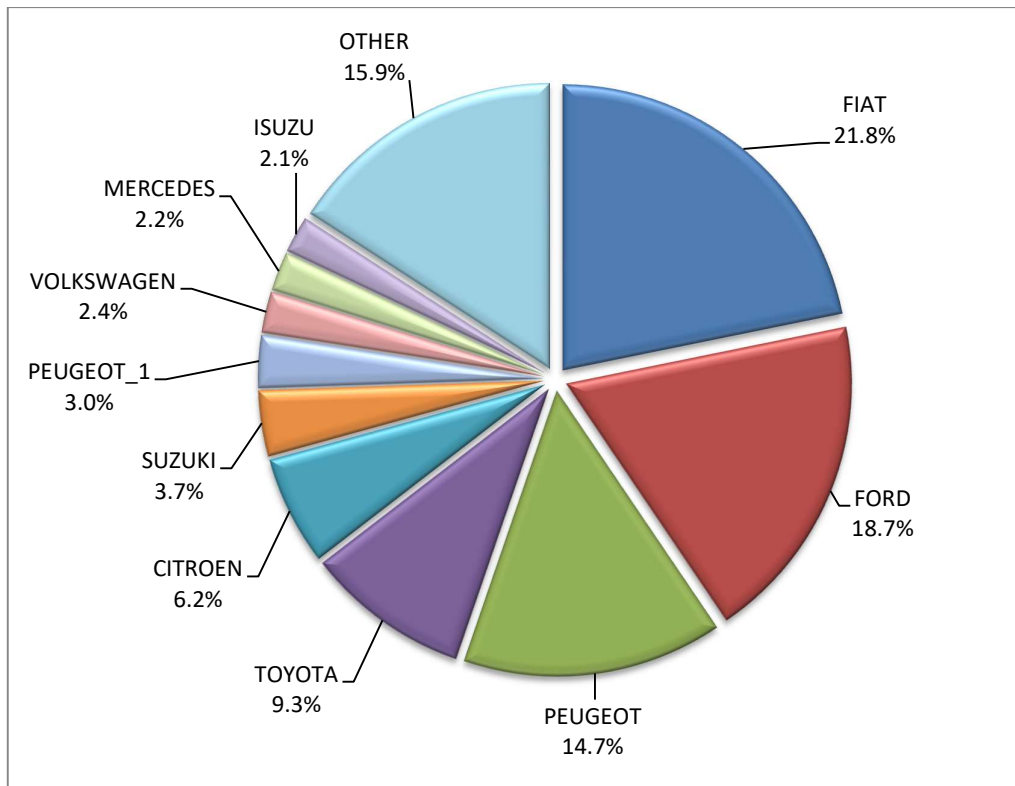
Table 5 (cont)
Sales of new and used lorries by make: July 2022 and January - July 2022

Make	Lorries			
	July		January - July	
	new	used	new	used
MITSUBISHI ¹	2	-	62	-
NISSAN	4	44	60	335
NISSAN ¹	1	-	2	-
OPEL	5	45	256	397
OVRIGA	-	-	-	1
PEUGEOT	119	42	477	412
PEUGEOT ¹	24	1	39	1
PFAU	-	1	-	4
PIAGGIO	2	2	17	17
PIAGGIO ¹	-	-	10	-
POLARIS	-	-	1	-
RAM	-	-	-	1
RENAULT	14	97	80	788
SCANIA	9	79	19	472
SCANIA ¹	-	-	4	1
SEAT	-	-	-	1
SKODA	-	-	-	17
SSANGYONG	-	-	-	4
STEYER	-	-	-	1
STREET SCOOTER	-	-	-	1
SUZUKI	30	-	172	-
TECMEC A.E.B.E.	-	-	2	-
TERBERG	-	-	-	1
TOUMBAS D. & CO	-	-	1	-
TOYOTA	75	36	950	217
VOLKSWAGEN	19	47	124	408
VOLKSWAGEN ¹	1	-	1	-
VOLVO	6	129	47	728
VOLVO ¹	6	-	26	1
TOTAL	807	1,502	5,710	10,648

1 : With 2nd/3rd stage manufacturer in Greece.

2 : With 2nd/3rd stage manufacturer abroad.

Graph 10. Sales of new lorries by make (July 2022)



Graph 11. Sales of new lorries by make (January – July 2022)

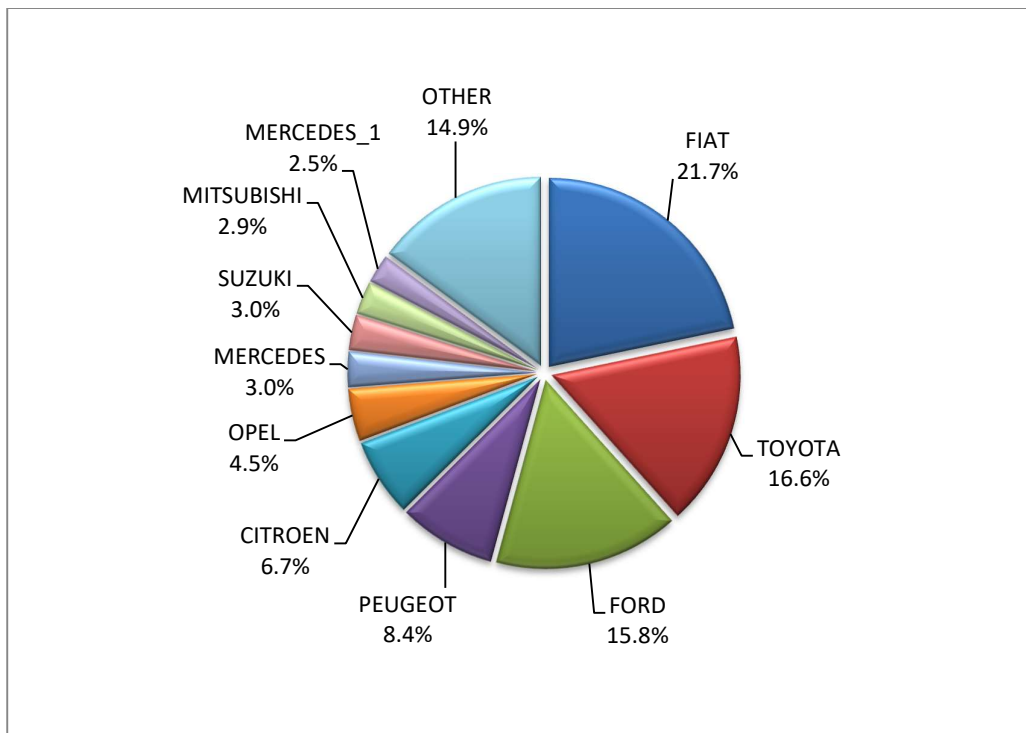


Table 6
Sales of new and used buses by make: July 2022 and January - July 2022

Make	Buses			
	July		January - July	
	new	used	new	used
AYATS	-	-	-	1
BOVA	-	2	-	25
DAF	-	-	-	1
EVOBUS	-	-	-	6
FIAT	-	-	-	1
FORD	1	-	15	11
FORD ¹	-	-	2	-
GULERYUZ	-	-	-	1
HEULIEZ BUS	-	-	-	1
IRISBUS	-	-	-	2
IRIZAR	1	-	1	-
ISUZU, ANADOLU ISUZU, TURKUAZ, TURQUOISE, AIOS, AOS, GLOBUS	1	-	3	-
ISUZU, AOS, GLOBUS	1	-	4	-
IVECO	-	1	2	6
KARSAN	-	-	1	-
MAN	-	3	-	38
MAN/NEOPLAN	-	-	-	2
MERCEDES	-	53	-	338
MERCEDES ¹	18	-	93	3
MERCEDES ²	1	1	16	12
MERCUS	-	-	-	2
NEOPLAN	-	4	-	13
OTOKAR	-	-	-	4
PRODIG	-	1	-	1
RENAULT	-	-	-	2
SCANIA	-	-	-	6
SETRA	-	8	-	62
TEMSA	1	3	1	8
TEMSA SKODA SABANCI	-	-	1	-
UNVI	-	-	-	3
VAN HOOL	-	1	-	4
VOLVO	-	-	-	2
XIAMEN KING LONG	-	-	-	4
TOTAL	24	77	139	559

1 : With 2nd/3rd stage manufacturer in Greece.

2 : With 2nd/3rd stage manufacturer abroad.

Graph 12. Sales of new buses by make (January – July 2022)

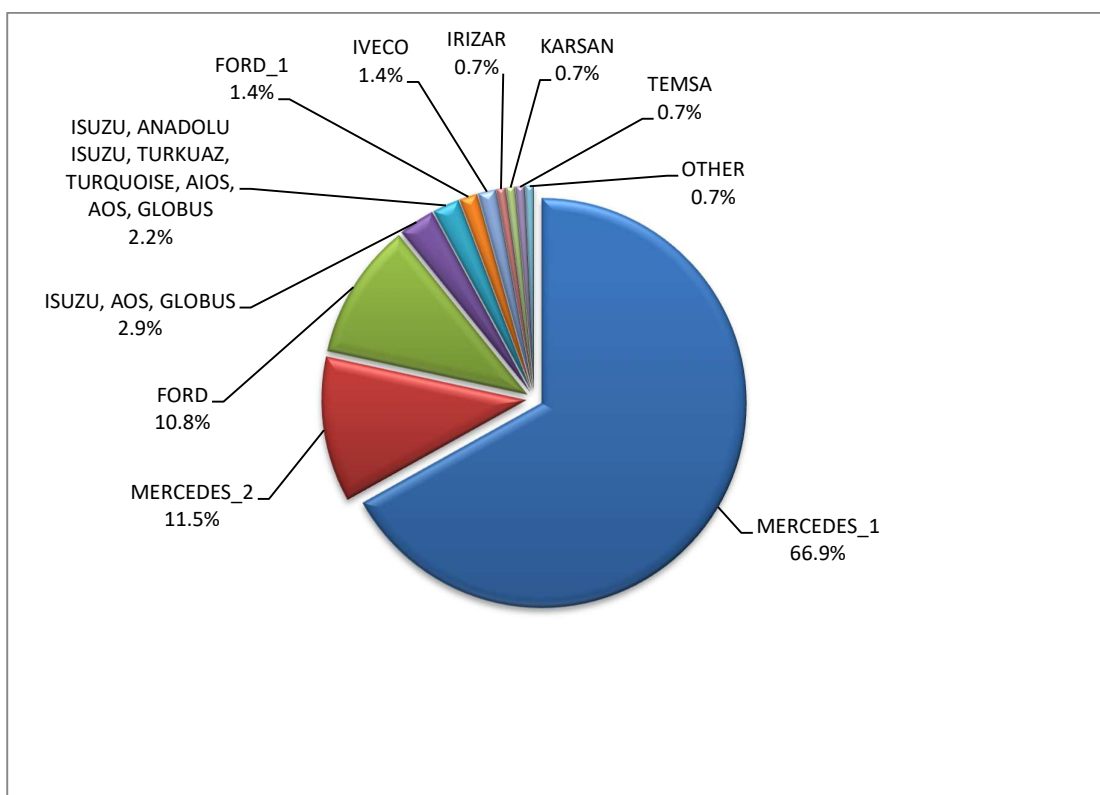


Table 7
Sales of new and used motorcycles by make or manufacturer: July 2022 and January - July 2022

Make	Motorcycles			
	July		January - July	
	new	used	new	used
ACCESS	-	-	-	1
ADIVA	-	-	-	1
AIDEA	-	-	1	-
AIXAM, MEGA, MINAUTO	-	1	-	1
APRILIA	115	8	416	49
ARENA, ELYX, MIFUN, VMOTO	-	-	4	-
ASKOLL	-	-	1	1
BAJAJ	10	-	56	1
BASHAN, AMGroup, AMGroup Bike, DON, RBIS, WORKER BEAR, Nomik ATV 2, APACHI, ISILDAR	-	-	15	-
BASHAN, APACHI, ISILDAR APACHI, ISILDAR, APACHE , ADVENTUREMOTORS	-	-	3	-
BELGARDA SPA	-	-	-	1
BENELLI	69	-	239	6
BETA	5	-	67	8
BMW	91	17	570	162
BOMBARDIER RECREATIONAL PRODUCTS ING (BRP)	-	-	8	1
BRIXTON	23	1	104	2
BSA	-	-	-	1
BUELL	-	-	-	3
CECTEK	-	-	2	-

Table 7 (cont)

Sales of new and used motorcycles by make or manufacturer: July 2022 and January - July 2022

Make	Motorcycles			
	July		January - July	
	new	used	new	used
CFMOTO	241	2	1,357	21
CFMOTO, MONDIAL, DERRACE	-	1	-	2
CHANGJIANG	1	-	1	-
CHONGOIG	-	-	-	1
CHONGQING LIFAN	-	-	-	1
DAELIM	-	1	-	4
DAYANG, DAYTONA MOTORS, NIPPONIA, DOCKER, WAYEL, SUMCO, VEEROAD, CETUR, RUTEC	2	-	48	-
DAYANG, DAYTONA MOTORS, NIPPONIA, DYMOTO, DOCKER, VEEROAD, EVO MOTORS, SUMCO, CETUR, HANSOM	13	-	28	-
DAYANG, DAYTONA MOTORS, NIPPONIA, DYMOTO, VEEROAD, EVO MOTORS, MH MOTORCYCLES, FKM, FKMOTORS	19	-	39	-
DAYANG, DAYTONA MOTORS, NIPPONIA, KUBA, VEEROAD, SUMCO, CETUR, RUTEC	127	-	635	3
DAYANG, DAYTONA MOTORS, NIPPONIA, VEEROAD	334	1	1,848	10
DAYANG, DAYTONA MOTORS, NIPPONIA, VEEROAD, DOCKER	142	2	533	3
DAYANG, ECOCREMO, ECOOTER, ECOOTOR, AGM, ORCAL, SUMCO	3	-	7	-
DAYANG, NIPPONIA, DAYTONA MOTORS, VEEROAD, SUMCO, DOCKER, MH MOTORCYCLES	6	-	36	-
DAYTONA	5	-	63	-
DMEMOTO, Elyx Smart, OPAI, DME	-	-	7	-
DUCATI	12	7	96	40
E-BROH	-	-	1	-
ECOOTER, ETRIX, AGM, DRAX, ORCAL, SUMCO	-	-	6	-
EFUN, ZAP	11	-	52	-
EMBUGGY, VINTAGE, EVANGEL	-	-	22	-
E-MOKE	-	-	1	-
FANGPOWER, Kontio Motors	4	-	4	-
FANTIC MOTOR	1	-	5	-
FD MOTORS, FASPIDER, Daytona Motors, EVO Motors, Veerod	15	-	61	-
FD MOTORS, FASPIDER, DAYTONA MOTORS, NIPPONIA, QUANTYA	15	-	36	-
FULU, LICH	-	-	1	-
GASGAS	-	-	15	3
GENERIC, EXPLORER, MALANCA, KSR Moto Austria, Motron Motorrad	5	-	29	-
GOLDEN LION, SAKURA, ARTISAN, ETALIAN, E-mio, Fauro, Kito, Varaneo, Viverra	8	-	9	-
GOUPIL	1	-	1	-
GPX	8	-	9	-
HARLEY DAVIDSON	1	9	10	61
HESHAN GOUJI NANLIAN MOTORCYCLE INDUSTRY, ORCAL, AJS, HERALD MOTOR COMPANY, MACBOR, MOTOB	1	-	1	-
HONDA	1,131	94	7,288	602
HOOOON, PICKMAN	-	-	2	-
HORWIN	-	-	3	-
HSUN, HISUN, APACHI, Mx, MASAI, HYTRACK, TRAPPER, PUMAREX, GEON, ASYAMOTOR, DAYTONA MOTORS, KRAL	-	-	3	2
HUSQVARNA	10	1	75	16
HYOSUNG	1	-	2	-
HYOSUNG & S&T KANUNI	1	-	1	-
IANYING, TYM, XINBEN, TEYIN, RIYA, ONGYUNDA, SANBEN, ALFA, Senzo, La Souris, TCB, KENTOYA	-	-	3	-
INDIAN MOTORCYCLE	3	-	13	2
ITALJET	1	-	5	-
JCADI, TILGREEN, Grupo Invicta MOTOR, e-broh, FAURO	-	-	2	-

Table 7 (cont)

Sales of new and used motorcycles by make or manufacturer: July 2022 and January - July 2022

Make	Motorcycles			
	July		January - July	
	new	used	new	used
JIANSHE	-	-	-	1
JIAYUAN	12	-	50	2
JINCHENG	5	-	9	-
JINYI, JINYI MOTOR, DAYI MOTOR, AMGroup, AMGroup Bike, Twister Wheel, GREENWOLKE	1	-	2	-
JNEN, JUNENG, ZIPP, MOTORAN, HORS	8	-	15	-
KAWASAKI	1	11	23	51
KEEWAY	-	-	-	1
KENBO	-	-	1	-
KL	-	-	-	1
KREIDLER	-	-	-	1
KSR MOTO AUSTRI	7	-	25	-
KTM	24	9	214	88
KUBA, MH MOTORCYCLES, MGB, SHINERAY, Daytona Motors, MASH	13	-	37	-
KWANG YANG	-	-	-	5
KYMCO	322	81	1,398	435
LAMBRETTA	5	-	22	-
LIFAN	-	1	-	2
LIFAN, HONLEI, QIPAI, SKYGO, GTS, PINK, Daytona MOTORS	3	-	6	-
Lingzhida, LINZDA, LINDN, LINYI, LONGMAO, NLIGHT	3	-	18	-
LINHAI	-	6	1	17
LINHAI, LHU, KUBA, online	-	4	-	9
LINHAI, SINNIS	1	-	8	-
LONCIN	-	1	-	2
LONCIN, KINLON, LONGTING, KUBA, YUKI, MONDIAL, STMAX, KANUNI, MOTORAN, ASYA, QUSWA, PUMAREX, RALLY USA, MOD, CCM	7	-	31	-
LONCIN, KUBA, RKS, ITALIKA, SUNRACE, SKY, MALAGUTI, SUPERBIKE, ROCKET, NOVELBAT, TIGERMOTO, GREEN, TRIDIAMOND	67	-	273	3
LONGJIA	-	1	-	1
LONGJIA, ITALJET, ORCAL, BEELINE, ROMET MOTORS, GEMINI, LEXMOTO, JAHANRO, VGA, DAYTONA MOTORS	-	-	2	-
LONGJIA, ORCAL, NECO	14	-	151	-
LONGJIA, ORCAL, NECO, ALFASCOOTERS, VGA, ROMET MOTORS, RYMCO, ASUS, OVER, CAROLYN, KANUNI, BTC, TURBHO, ITALMOTO	26	-	39	1
LONGJIA, ORCAL, NECO, ROUTER, VGA, BARTON, MOTORS, moretti, CAROLYN, KANUNI, BTC, AGM, ALFASCOOTERS, ROMET MOTORS	-	10	-	10
LONGJIA, ORCAL, NECO, VGA, Gemini	1	-	17	-
LONGJIA, ORCAL, NECO, VGA, ROMET MOTORS, ROUTER, lexmoto, Gemini, MH, motorcycles	4	-	6	-
LONGJIA, ORCAL, TNT MOTOR, BEELINE, VGA, ITALJET, GEMINI, lexmoto, Jahanro, italo, NECO	-	-	3	-
LVNENG	4	-	7	-
LVNENG, SKAND, VEMO, SMARTWAY, IVA, HYPE-BIKE, SENZO, MONASSO, genergia	-	-	1	-
MACBOR, RVM, COLOVE, ORCAL, DAYTONA MOTORS, ZF-KY, Lexmoto, OVER BIKES, YUKI, AJS	9	-	85	-
MALAGUTI	7	2	198	9
MBK	-	1	-	2
MELEX	1	-	5	-
MGK HM	117	6	310	8
MILG	1	-	2	-
MODEN, BTC, Motowell, COLIBRI, VIARELLI	-	-	1	-

Table 7 (cont)

Sales of new and used motorcycles by make or manufacturer: July 2022 and January - July 2022

Make	Motorcycles			
	July		January - July	
	new	used	new	used
MOTO GUZZI	5	-	45	4
MOTO MORINI	2	-	15	-
MOTRON MOTORRAD, ZONGSHEN	1	-	4	-
MV AGUSTA	-	2	6	4
NACIONAL MOTOR SAU	-	-	-	1
NEV, N, FLYBO, JM, MALON, Herox, Baoya, ZILENT	-	-	-	1
NIU, NUUV	26	-	61	1
OPAI	-	-	1	-
ORCAL, SOMOTO, AJS, SENKE, HERALD, ITALJET, WACCO, MOTOBİ, CLEVELAND CYCLEWERKS ACE, MERCURY, SAXXX, SFM	-	-	1	-
PEUGEOT	-	6	7	26
PGO	-	-	-	1
PIAGGIO	1,443	56	5,202	333
PILOT CAR	1	-	1	-
PIONEER, LEXMOTO, PULSE, BULLIT, HERALD, WOTTAN, EURO MOTORS, VERVEMOTO, SP BIKE, EXPLORER, RIDE	-	-	1	-
POLARIS	16	1	90	2
QINGQI, I-MOTO	-	-	1	-
QINGQI, KADIRGA	-	-	3	-
QINGQI, PIONEER, KENROD, PEUGEOT	-	-	-	1
QJ	-	-	-	2
QJ, QIANG, KEEWAY, LEONE	1	-	6	-
QJ, QIANG, GENERIC, MTR, RIDE	2	-	2	-
QJ, QIANG, KEEWAY, LEONE, KUBA, RKS, BENELLI, VENGO	1	-	5	-
QJ, QIANG, KEEWAY, LEONE, KUBA, RKS, QJMOTOR, B MOTOBİ	2	-	2	-
QJ, QIANG, KEEWAY, LEONE, KUBA, RKS, TELL, EMPIRE KEEWAY, BENELLI, VENGO	1	-	10	-
QJ, QIANG, KEEWAY, LEONE, tell, KUBA, RKS, BENELLI, VENGO	1	-	9	-
QUADRO, QUADRO VEHICLES	-	-	1	-
RAY ELECTRIC MOTORS	2	-	4	-
REDMOTO	1	-	2	1
RENAULT	-	-	-	7
RENLI	35	-	41	-
RIEJU, DRAC	-	-	1	-
ROYAL ENFIELD	21	-	97	-
Royalloy, Royal Alloy, RA, SCOMADI, VALENTINO, VALENTINO MOTORI	3	-	15	-
RVM, MACBOR, COLOVE, ORCAL, DAYTONA MOTORS	-	-	1	-
SAKURA, GOLDEN LION, ARTISAN, Fayro, ETALIAN, Viverra, Kito, E-mia, velca, E.F.O., E- KUMA, BOLIDE, LINZE	10	-	20	-
SAKURA, GOLDENLION, E.F.O., Fauro, Viverra, Nitrox, STRELLA City, Artisan	1	-	4	-
SAN YANG	-	-	-	5
SCUTUM, ETRIX, SILENCE	2	-	9	-
SEGWAY	28	1	85	1
SENKE, SENKO, SENKI, SENKY, HALI, JIETOU BAWANG, NANLIAN, XINHAI, PGO, SENKE. HALI	-	-	3	-
SHANYANG, ATLAS PANTHER, YAMAZUKI MOTO, MOTORKING, Hirlee, XB	1	-	17	-
SHARE'NGO, ZHIDOU, ZD	12	-	18	-
SHENGWO NEW ENERGY, YUKI	-	-	18	-
SHERCO	-	-	10	2
SHINERAY, SWM	1	-	4	-
SILENCE, SCUTUM, ETRIX	5	-	37	-
SI-ZWEIRAD	-	-	-	1

Table 7 (cont)

Sales of new and used motorcycles by make or manufacturer: July 2022 and January - July 2022

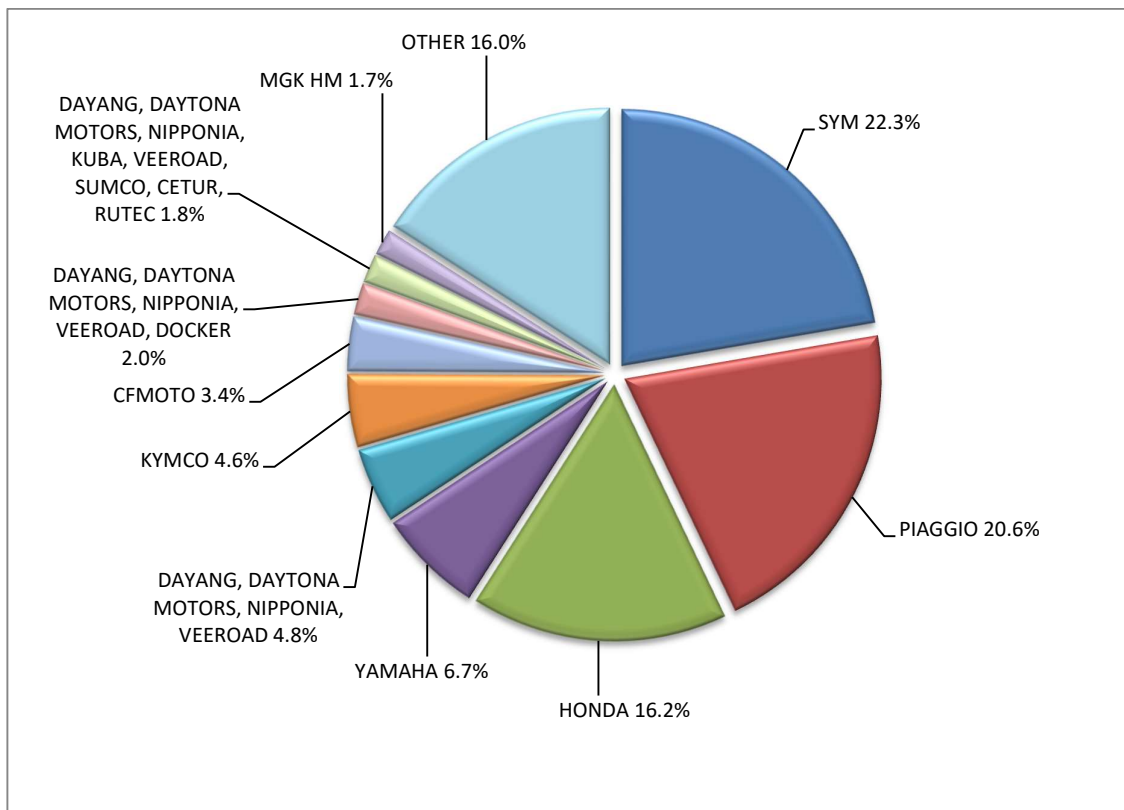
Make	Motorcycles			
	July		January - July	
	new	used	new	used
SKYTEAM, SACIN, CSR, METALCO, SOKUDO, BAZUKA, MINICO, MOTOSBASI, MOTOS BORDOY, SUMKO, ROXON, MONKEY BIKES	2	-	15	3
SUKIDA, RARIRO, KAIER, HAOJIAN	-	-	1	-
SUZUKI	38	20	247	126
SWM	-	-	2	-
SYM	1,561	26	9,164	144
TAIWAN GOLDEN B	-	1	-	1
TARO, JUNAK, BARTON MOTORS ,ORCAL, Lexmoto	4	-	54	-
TARO, JUNAK, BARTON MOTORS, ORCAL, Lexmoto, MITT, NECO, WOTTAN, MAGPOWER, ADAMOTO MOTORCYCLES	26	-	87	-
TARO, JUNAK, BARTON MOTORS, ORCAL, Lexmoto, MITT, NECO, WOTTAN, MAGPOWER, ADAMOTO, MAXON, MAX-ON, TRMOTOR, CHUANL	4	-	55	-
TARO, TRMOTOR, CHUANL, JUNAK, BARTON MOTORS, ORCAL, Lexmoto, MITT, NECO, WOTTAN, MAGPOWER, ADAMOTO MOTORCYCLES	3	-	10	-
TAURIS	-	-	-	1
TAYO, HAOJIANG, ZHONGYU, THUMP, THUMPSTAR, KIDEN, ZONTES, Junak	13	-	14	-
TAYO, HAOJIANG, ZHONGYU, THUMP, THUMPSTAR, KIDEN, ZONTES, Junak, SENKE, TANNY, TYAN, ROMET, ROMET MOTORS, ROUTER	70	-	306	3
TAYO, ZONTES, KIDEN, Haojiang, ZHONGYU, Sharpon, TANNY, TYAN, Senke, BETA, Daytona Motors	22	-	114	2
TGB	2	-	19	4
TIANYING, RIYA, HONGYUNDA, TYM, HONLING, TAMCO, ALISON, DMK MOTORS, WLIE, LEEWAY, WLXQ, AP Gmoto, ALFA	1	-	6	-
TINBOT, KOLLTER, MASAI, INTO, VIARELLI, EDRIVE, DuroCar, MGK HM, Fauro, BRINCO	1	-	4	-
TINGWANG, X-TEAM, TIKING	1	-	1	-
TM RACING	-	-	1	-
TORROT, QUADRO VEHICLES	-	-	6	-
TRIUMPH	22	1	177	14
TROMOX	1	-	1	-
VESPA	-	1	-	1
VMOTO, E-MAX, FMC, CSR, ROADSIGN, KENTOYA, JINYING, GOES, VETRIX, DAO, VENGO, TELL	-	-	1	-
VMOTO-SOCO, E-MAX, VMOTO, SUPER SOCO	10	-	37	-
VOLTA, REVOLT, VTA, APEC, FAHR, PEAK	-	-	1	-
VOLTA, VTA, REVOLT	1	-	18	-
WONJAN, SAMADA	-	-	2	-
WONJAN,THRUST MOTOR, WMOTO, KEEWAY, TD	-	-	-	1
WUZHENG	-	-	1	-
XEV, X, XEV YOYO	-	-	2	-
XGJAO	-	-	-	1
XGJAO, ZIPP, TOROS, ROMET, ROMET MOTORS, ROUTER, VEEROAD, DAYTONA MOTORS, GEMINI, MH MOTORCYCLES, MTG MOTORS	-	-	5	-
XINRI, SUNRA ,APACHI, ISILDAR, ISILDAR APACHI, Wayscral, KRAL	9	-	54	-
XY	-	-	-	1
YADEA	-	-	2	-
YAMAHA	467	94	3,022	608
YASAN MOTOR, Kito	2	-	4	-
YINGANG, BENYI, ROMET MOTORS, YUKI, ROUTER, MOTORAN, DAYTONA MOTORS, M1NSK, HAMACHI, KUBA, MONDIAL	1	-	5	-
YINXIANG, MONDIAL, GEMINI, TCB	-	-	4	-
YIYING, BENZHOU, TRUVA	-	-	-	1

Table 7 (cont)

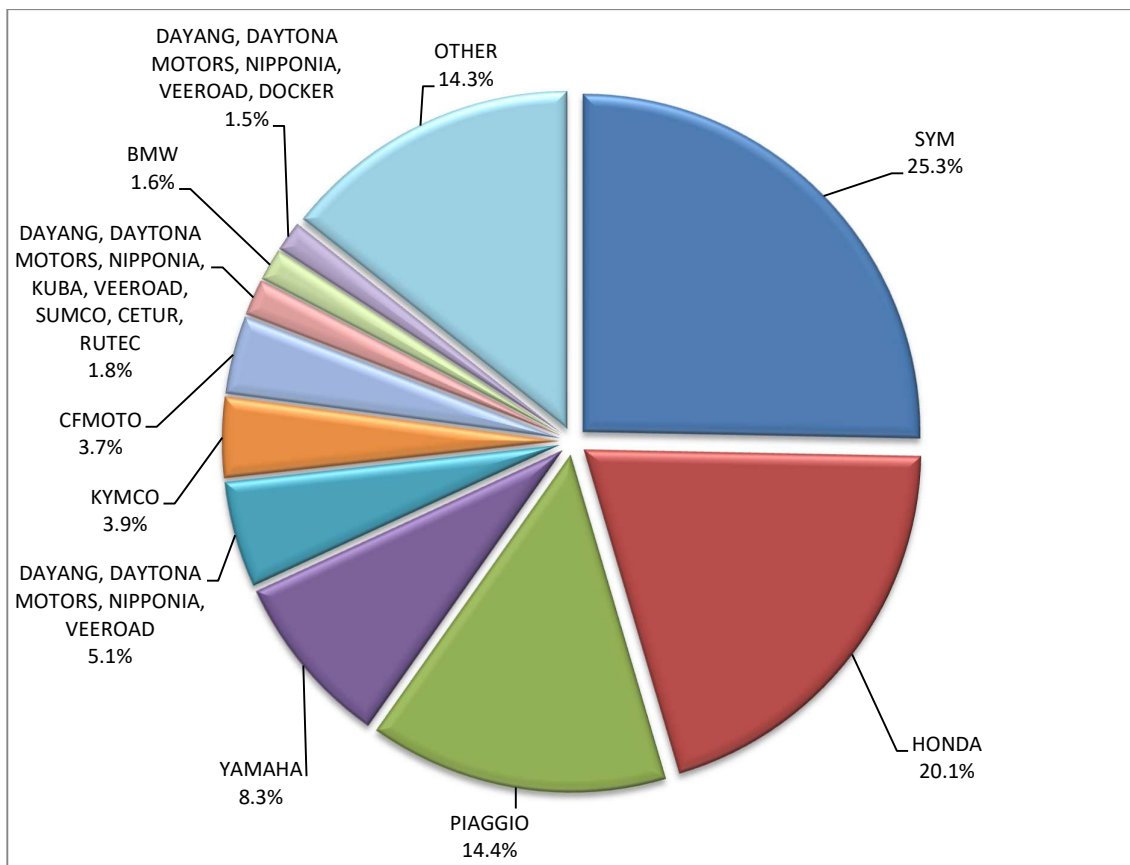
Sales of new and used motorcycles by make or manufacturer: July 2022 and January - July 2022

Make	Motorcycles			
	July		January - July	
	new	used	new	used
YASAN MOTOR, Kito	2	-	4	-
YINGANG, BENYI, ROMET MOTORS, YUKI, ROUTER, MOTORAN, DAYTONA MOTORS, M1NSK, HAMACHI, KUBA, MONDIAL	1	-	5	-
YINXIANG, MONDIAL, GEMINI, TCB	-	-	4	-
YIYING, BENZHOU, TRUVA	-	-	-	1
ZERO MOTORCYCLES	2	-	9	-
ZHEJIANG QIANJ.	-	-	-	1
ZHIDOU, SHARE'NG	-	-	-	1
ZHONGNENG, ASYA, DADO, ZNEN, BARON	-	1	-	1
ZHONGNENG, ZNEN, AGM, AJS, YUKI, COLIBRI, EUROCKA, BTC, NOVA MOTORS, LEXMOTO, Actionbikes Motors	-	-	7	-
ZHONGNENG, ZNEN, AGM, BTC, CLS, COLIBRI, DAYTONA MOTORS, DERRACE, DOCKER, JM MOTORS, KUBA, La souris, LEXMOTO	9	1	65	1
ZHONGNENG, ZNEN, DADO, DIRECT BIKES, GOWINN, VIVACOX, NECO, AGM, LEE, ASYA	1	-	1	-
ZONGSHEN	3	-	4	-
ZONGSHEN, Lexmoto, ICONE, VORTEX, M1NSK, MACBOR, MONDIAL, ROMET MOTORS, SINNIS, SPARKSTER, OVER BIKES	1	-	3	-
ZONGSHEN, ZIP STAR, Lexmoto, ICONE, VORTEX, M1NSK, MACBOR, MONDIAL, ROMET MOTORS, SINNIS, SPARKSTER, OVER BIKES	2	-	13	-
ZONGSHEN, ZIPSTAR, ZEALSUN, KENTO	-	-	3	-
ZHONGNENG, ZNEN, AGM, BTC, CLS, COLIBRI	1	-	1	-
TOTAL	7,002	489	36,211	2,966

Graph 13. Sales of new motorcycles (July 2022)



Graph 14. Sales of new motorcycles (January – July 2022)



EXPLANATORY NOTES

Survey on the issuing of new road motor vehicle circulation licenses	The survey on the issuing of new motor vehicle circulation licenses is a census survey. The released data give information, at country level, on the brand and type of the motor vehicle, as well as whether it is new or used. The survey does not include vehicles that move on rails, trolley busses, agricultural tractors and machinery. In addition, the following are excluded: all motor vehicles of the Armed Forces, Police, Fire Brigade, State Services, Diplomatic Corps, Foreign Missions, and Invalids of Wars, as well as motorcycles with a cylinder capacity less than 50 cc.
Legal basis	Law 3832/2010
ReferencePeriod	July 2022
Coverage	The production of monthly data is based on the registers held by the Ministry of Infrastructure, Transport and Networks, which records all the monthly changes observed in the vehicle registration licenses at country level.
Definitions	<p>Road motor vehicle is any vehicle that, irrespective of the number of wheels, is moved by an engine and is designed to transport persons or cargo or both of them, either they are on the same single vehicle or on a trailer carried by the main motor vehicle.</p> <p>New road motor vehicle is any motor vehicle that is registered for the first time in Greece during the reference month and has not been put into circulation in any other country.</p> <p>Used motor vehicle is any motor vehicle that is registered for the first time in Greece and has been imported as a used one from abroad</p> <p>Passenger motor vehicle: it is a motor vehicle designed to carry mostly people, having no more than 9 seats, including the driver's seat.</p> <p>Bus: it is a motor vehicle, which is designed to carry mostly people, having more than 10 seats, including the driver's seat. In the corresponding tables of this Press Release, this category also includes articulated buses.</p> <p>Lorry: it is motor vehicle designed to carry mostly cargo. In the corresponding tables of this Press Release, this category also includes tractors, tow trucks, articulated tractors, and trucks with trailers.</p> <p>Motorcycle: any two-wheeled motor vehicle, with or without sidecar, with maximum authorized design speed over 45 km/h, or in case it is powered by a combustion engine, with a cylinder capacity of 50 cc or over. In the corresponding tables of this Press Release, this category also includes the three-wheeled motor vehicles – motor tricycles.</p> <p>Tricycle motor vehicle: it is a motor vehicle with three symmetrical wheels with maximum authorized design speed over 45 km/h, or in case it is powered by a combustion engine, with a cylinder capacity over the 50 cc. This category also includes four-wheel vehicles, except the light four-wheel motorcycles, whose empty vehicle tare (excluding the weight of the fuel or mixture of fuel-oil or the weight of the batteries for electric cars) is up to 400 kg in the case the vehicle is designed for passenger use or up to 550 kg in case the vehicle is designed to carry cargo and whose engine is up to 15KW.</p>
Methodology	Exhaustive Survey. The primary data derive from the Ministry of Infrastructure, Transport and Networks and are based on the issuing of new circulation licenses as they are registered by the Regional Offices for Transport and Communications.
References	More information (graphs, tables) concerning the survey on the issuing of new motor vehicle circulation licenses are available on the webpage of ELSTAT, www.statistics.gr , under the link http://www.statistics.gr/en/statistics/-/publication/SME24/-