



HELLENIC REPUBLIC
HELLENIC STATISTICAL AUTHORITY

Piraeus, June 10, 2022

PRESS RELEASE

ISSUING OF MOTOR VEHICLE LICENSES: MAY 2022

The Hellenic Statistical Authority announces that in May 2022, 21,665 road motor cars (both new and used from abroad) were put into circulation for the first time, recording a 17.6% increase compared with the corresponding month of 2021 when the number of road motor cars was 18,423. In May 2021, a 57.2% increase had been observed in comparison with the corresponding month of 2020 (Table 1, Graphs 1,2,3,5). A total number of 12,837 new cars were put into circulation in May 2022 compared with 11,761 in May 2021, recording a 9.1% increase.

The new motorcycles over 50cc (both new and used from abroad) that were put into circulation for the first time in May 2022 amounted to 7,816, against 5,875 in 2021, thus recording a 33.0% increase. In May 2021, a 45.2% increase had been observed in comparison with the corresponding month of 2020 (Table 1, Graph 4). Out of the above motorcycles 7,261 were new, while the corresponding figure in May 2021 was 5,395, recording a 34.6% increase.

During the period January - May 2022, 89,885 road motor cars (both new and used from abroad) were put into circulation for the first time, representing an increase of 8.4% compared to the corresponding period of 2021 when the number of road motor cars was 82,953. During the period January - May 2021 an increase of 31.3% had been observed in comparison with the corresponding period of 2020 (Table 3, Graphs 6,7). Out of the above number of road motor cars that were put into circulation, from January to May 2022, 47,633 were new, while the corresponding number during the respective period of 2021 was 48,704, recording a decrease of 2.2%.

During the period January - May 2022 the circulation of new motorcycles over 50cc (both new and used from abroad) amounted to 23,339 against 18,566 in 2021, thus representing a 25.7% increase. An increase of 58.0% had been observed during the period January - May 2021 in comparison with the corresponding period of 2020 (Table 3, Graphs 6,7). A total number of 21,420 new motorcycles were put into circulation, from January to May 2022, compared with 16,865 during the corresponding period of 2021, recording a 27.0% increase.

Information on methodological issues:

Sectoral Statistics Division

Transport Statistics Section

Pota Tzortzi, Konstantinos Menexes

Tel: +30 213 135 2187, +30 213 135 3055

e-mail: p.tzortzi@statistics.gr, k.menexes@statistics.gr

Information for data provision:

Tel: +30 213 135 2022

e-mail: data.dissem@statistics.gr

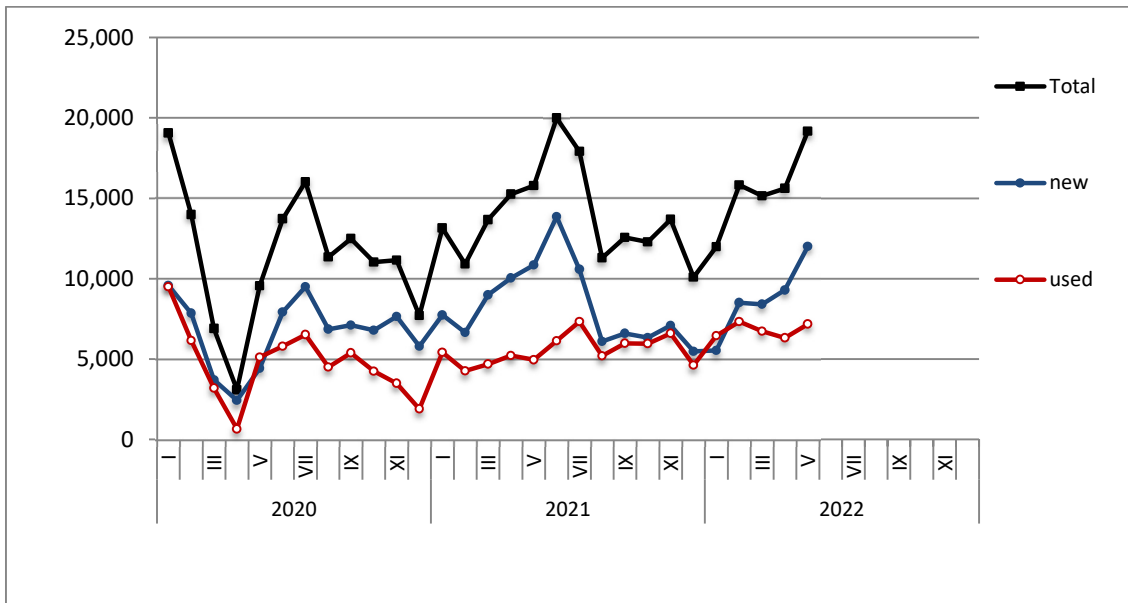
Table 1. Road motor vehicles, both new and used, put into circulation for the first time in Greece: May 2020 - 2022

Category of Road Motor Vehicles	May									Change (%)					
	2020			2021			2022			2021/2020			2022/2021		
	Total	New	Used	Total	New	Used	Total	New	Used	Total	New	Used	Total	New	Used
Greece, total															
Road Motor Vehicles, total	15,768	8,616	7,152	24,298	17,156	7,142	29,481	20,098	9,383	54.1%	99.1%	-0.1%	21.3%	17.1%	31.4%
1. Road motor cars	11,723	4,961	6,762	18,423	11,761	6,662	21,665	12,837	8,828	57.2%	137.1%	-1.5%	17.6%	9.1%	32.5%
Passenger Cars	9,546	4,434	5,112	15,789	10,845	4,944	19,163	11,994	7,169	65.4%	144.6%	-3.3%	21.4%	10.6%	45.0%
Buses	44	5	39	107	47	60	128	29	99	143.2%	840.0%	53.8%	19.6%	-38.3%	65.0%
Lorries	2,133	522	1,611	2,527	869	1,658	2,374	814	1,560	18.5%	66.5%	2.9%	-6.1%	-6.3%	-5.9%
2. Motorcycles > 50 cc	4,045	3,655	390	5,875	5,395	480	7,816	7,261	555	45.2%	47.6%	23.1%	33.0%	34.6%	15.6%
Prefecture of Attica															
Road Motor Vehicles, total	7,574	5,137	2,437	13,084	10,429	2,655	15,635	11,857	3,778	72.7%	103.0%	8.9%	19.5%	13.7%	42.3%
1. Road motor cars	5,680	3,335	2,345	10,559	7,995	2,564	12,370	8,714	3,656	85.9%	139.7%	9.3%	17.2%	9.0%	42.6%
Passenger Cars	4,948	3,008	1,940	9,592	7,534	2,058	11,354	8,203	3,151	93.9%	150.5%	6.1%	18.4%	8.9%	53.1%
Buses	16	2	14	22	10	12	48	14	34	37.5%	400.0%	-14.3%	118.2%	40.0%	183.3%
Lorries	716	325	391	945	451	494	968	497	471	32.0%	38.8%	26.3%	2.4%	10.2%	-4.7%
2. Motorcycles > 50 cc	1,894	1,802	92	2,525	2,434	91	3,265	3,143	122	33.3%	35.1%	-1.1%	29.3%	29.1%	34.1%

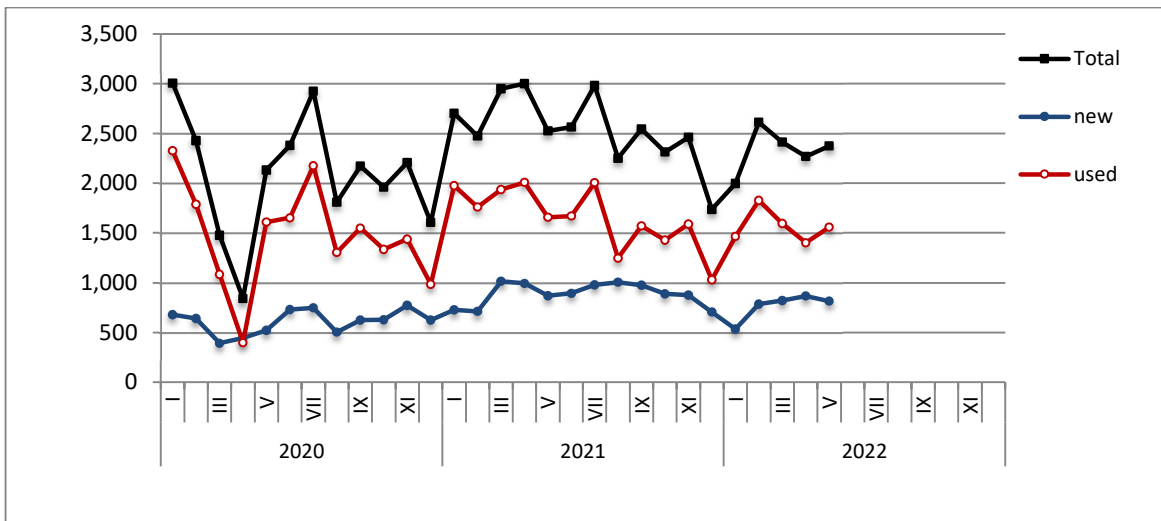
Table 2. Road motor vehicles, both new and used, put into circulation for the first time in Greece: June 2020 – May 2022

Category of Road Motor Vehicles	Average Jun. 2020 - May 2021			Average Jun. 2021 - May 2022			Change (%)		
							Average Jun. 2021 - May 2022 / Average Jun. 2020 - May 2021		
	Total	New	Used	Total	New	Used	Total	New	Used
Greece, total									
Road Motor Vehicles, total	19,159	12,413	6,746	21,588	13,271	8,317	12.7%	6.9%	23.3%
1. Road motor cars	15,377	8,941	6,436	17,123	9,189	7,934	11.4%	2.8%	23.3%
Passenger Cars	12,864	8,168	4,696	14,625	8,312	6,313	13.7%	1.8%	34.4%
Buses	119	27	92	121	33	88	1.7%	22.2%	-4.3%
Lorries	2,394	746	1,648	2,377	844	1,533	-0.7%	13.1%	-7.0%
2. Motorcycles > 50 cc	3,782	3,472	310	4,465	4,082	383	18.1%	17.6%	23.5%

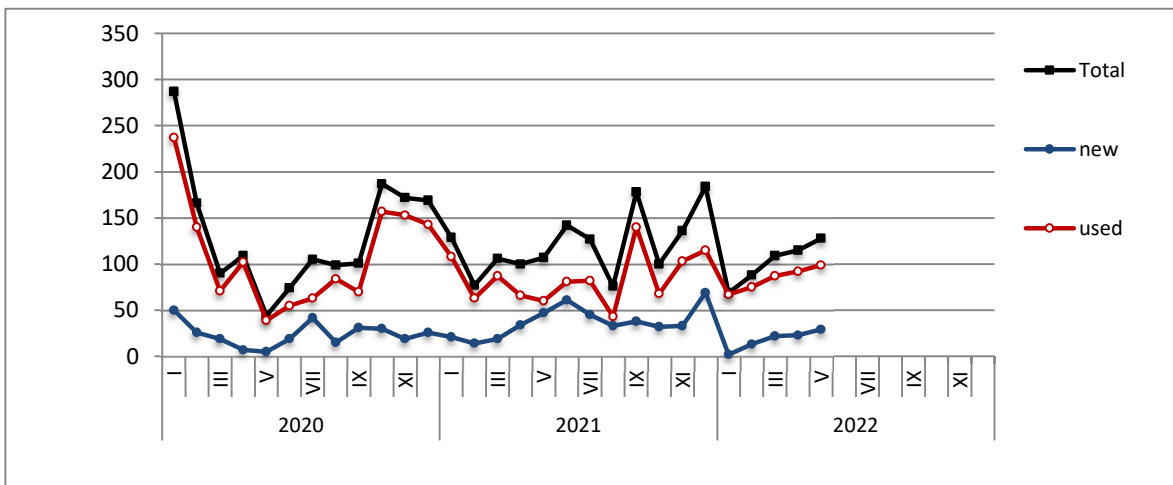
Graph 1: Passenger Cars (January 2020 – May 2022)



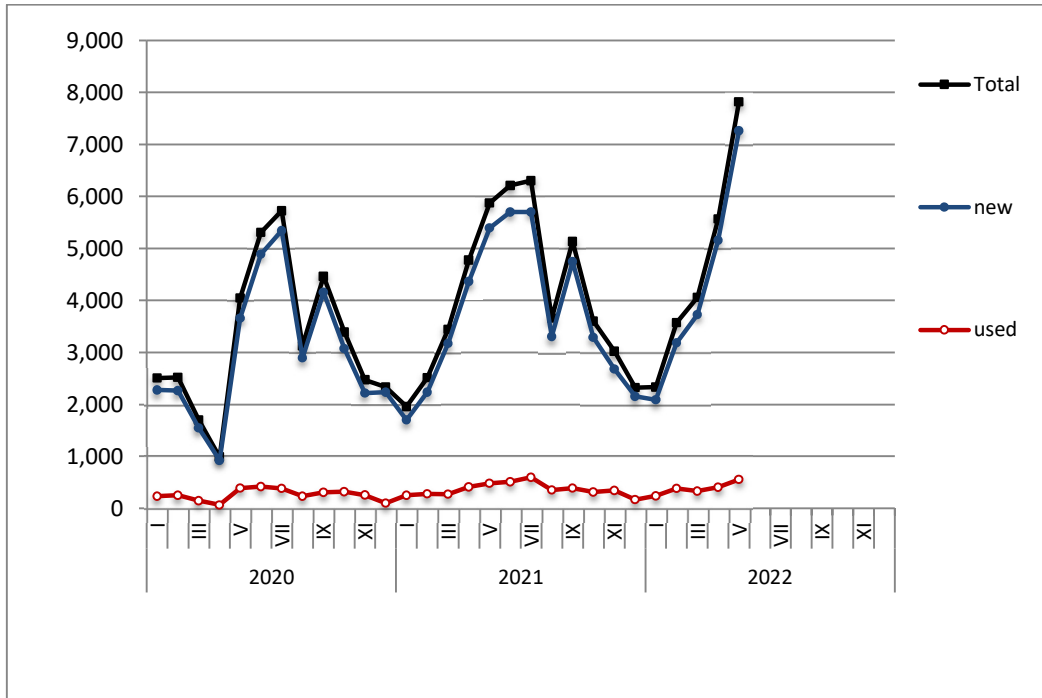
Graph 2: Lorries (January 2020 – May 2022)



Graph 3: Buses (January 2020 – May 2022)



Graph 4: Motorcycles (January 2020 – May 2022)



Graph 5: New Registrations of Motor Vehicles (May 2022)

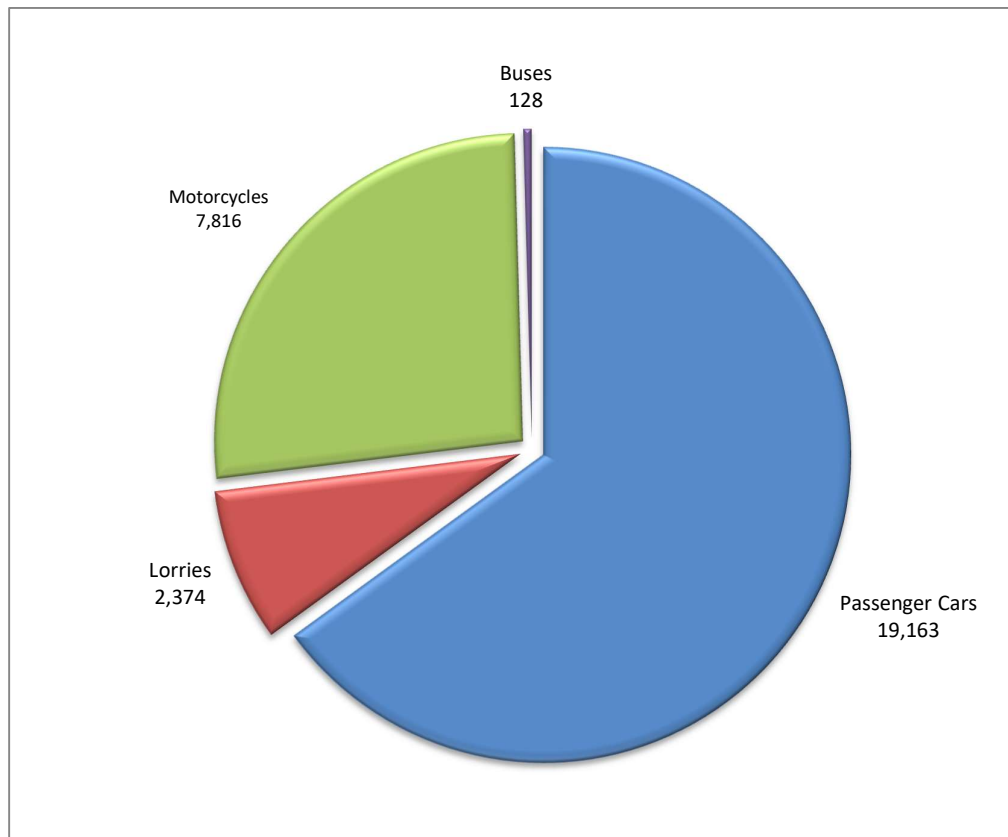
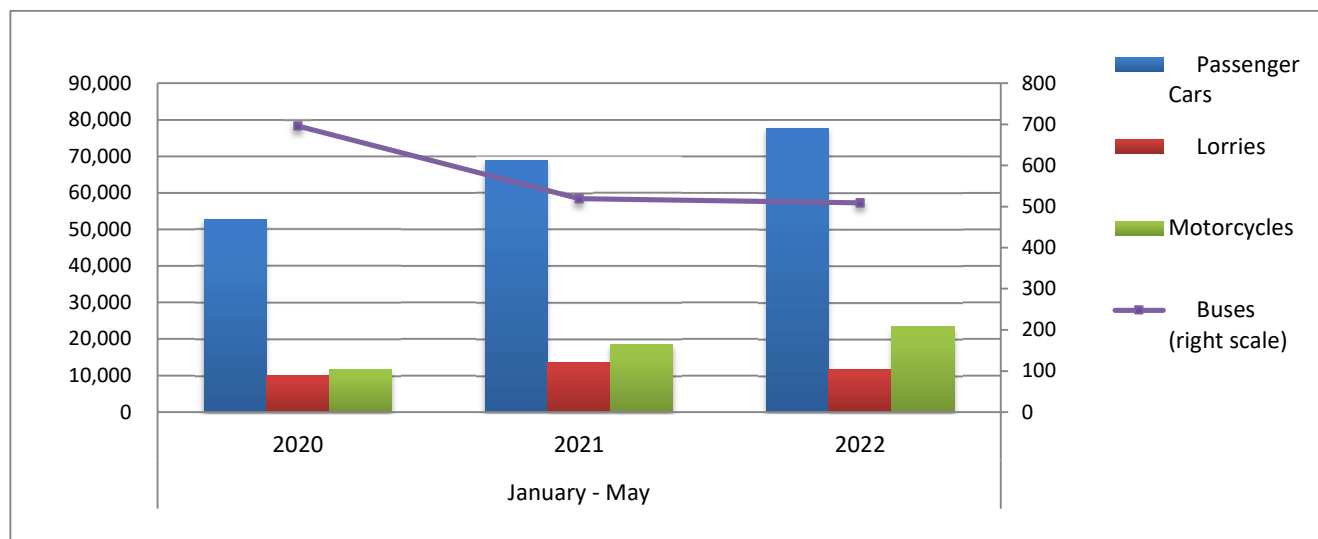


Table 3. Road motor vehicles, both new and used, put into circulation for the first time in Greece: January - May, years 2020 till 2022															
Category of Road Motor Vehicles	January - May									Change (%)					
	2020			2021			2022			2021/2020			2022/2021		
	Total	New	Used	Total	New	Used	Total	New	Used	Total	New	Used	Total	New	Used
Greece, total															
Road Motor Vehicles, total	74,917	41,440	33,477	101,519	65,569	35,950	113,224	69,053	44,171	35.5%	58.2%	7.4%	11.5%	5.3%	22.9%
1. Road motor cars	63,168	30,777	32,391	82,953	48,704	34,249	89,885	47,633	42,252	31.3%	58.2%	5.7%	8.4%	-2.2%	23.4%
Passenger Cars	52,583	27,992	24,591	68,779	44,252	24,527	77,708	43,725	33,983	30.8%	58.1%	-0.3%	13.0%	-1.2%	38.6%
Buses	696	107	589	519	135	384	509	89	420	-25.4%	26.2%	-34.8%	-1.9%	-34.1%	9.4%
Lorries	9,889	2,678	7,211	13,655	4,317	9,338	11,668	3,819	7,849	38.1%	61.2%	29.5%	-14.6%	-11.5%	-15.9%
2. Motorcycles > 50 cc	11,749	10,663	1,086	18,566	16,865	1,701	23,339	21,420	1,919	58.0%	58.2%	56.6%	25.7%	27.0%	12.8%
Prefecture of Attica															
Road Motor Vehicles, total	36,447	25,848	10,599	54,398	41,037	13,361	59,662	42,421	17,241	49.3%	58.8%	26.1%	9.7%	3.4%	29.0%
1. Road motor cars	30,268	19,959	10,309	45,331	32,381	12,950	48,721	32,023	16,698	49.8%	62.2%	25.6%	7.5%	-1.1%	28.9%
Passenger Cars	26,869	18,376	8,493	40,255	29,971	10,284	43,882	29,573	14,309	49.8%	63.1%	21.1%	9.0%	-1.3%	39.1%
Buses	223	53	170	113	41	72	198	42	156	-49.3%	-22.6%	-57.6%	75.2%	2.4%	116.7%
Lorries	3,176	1,530	1,646	4,963	2,369	2,594	4,641	2,408	2,233	56.3%	54.8%	57.6%	-6.5%	1.6%	-13.9%
2. Motorcycles > 50 cc	6,179	5,889	290	9,067	8,656	411	10,941	10,398	543	46.7%	47.0%	41.7%	20.7%	20.1%	32.1%

Graph 6. New Motor Vehicles Circulation Licenses: January – May, years 2020 till 2022



Graph 7. New Registrations of Motor Vehicles: January – May 2022

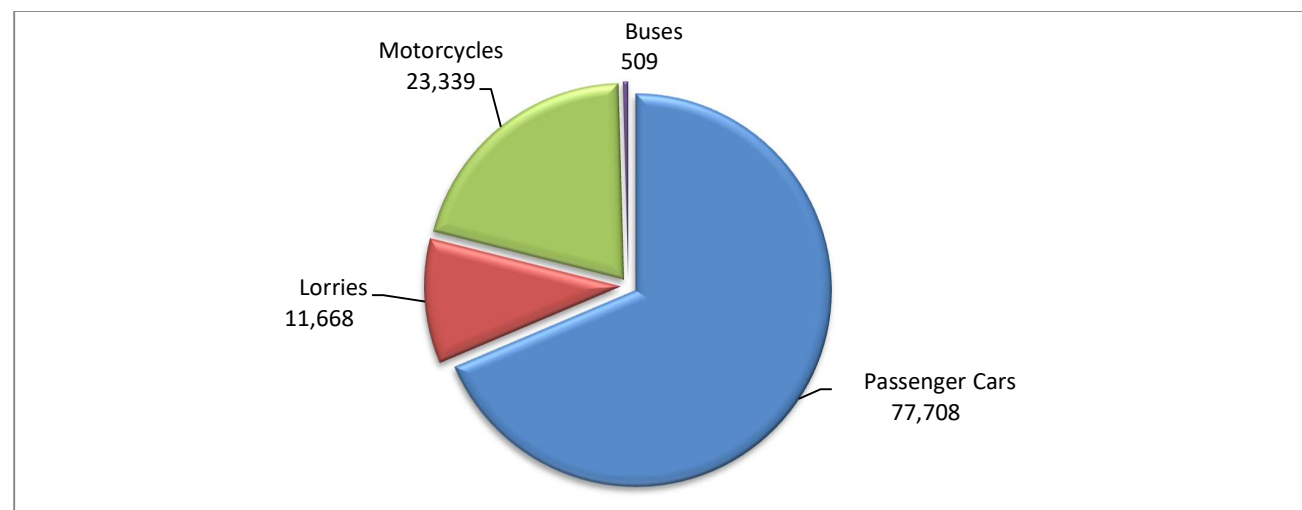


Table 4
Sales of new and used passenger cars by make: May 2022 and January - May 2022

Make	Passenger cars			
	May		January - May	
	new	used	new	used
ALFA ROMEO	16	62	46	302
ALPINA	-	-	2	-
ASTON MARTIN	-	-	-	1
AUDI	359	73	1,449	528
BENTLEY	-	-	4	1
BMW	480	160	1,747	800
BURSTNE	-	-	-	1
CADILLAC	-	-	-	2
CAPRON	-	-	4	3
CARTHAGO	-	-	1	-
CHEVROLET	-	38	-	215
CHRYSLER	-	-	-	5
CITROEN	72	327	436	1,259
CITROEN / DS	468	20	1,517	61
CUPRA	64	-	205	1
DACIA	354	183	1,211	846
DAIHATSU	-	-	-	7
DETHLEFFS	-	-	-	1
DODGE	-	2	-	2
DS	79	-	338	5
ETRUSCO	-	-	1	-
FERRARI	-	-	-	6
FIAT	604	396	1,643	1,811
FORD	240	460	1,377	2,168
GENERAL MOTORS	-	1	-	1
HOBBY WOHNWAGEN	-	-	-	1
HONDA	18	47	103	275
HYMER AG	-	2	-	2
HYUNDAI	1,265	628	4,086	3,280
IVECO S.p.a/LAIKA CARAVANS SpA	-	1	-	2
JAGUAR	8	13	38	46
JEEP	180	45	1,063	168
JIAYUAN	-	-	1	-
KARMANN-MOBIL	-	1	-	1
KERABOSS	-	-	1	-
KIA	809	175	2,448	749
KNAUS	-	-	-	5
LADA	-	-	-	2
LAMBORGHINI	-	-	2	6
LANCIA	-	12	-	40
LAND ROVER	57	51	194	257
LES DAUPHINS	-	-	-	1
LEVC	-	-	3	-
LEXUS	10	3	62	24
LMC	-	-	-	1
MASERATI	-	1	7	7
MAZDA	79	21	255	132
MC LOUIS S.P.A	-	1	-	1

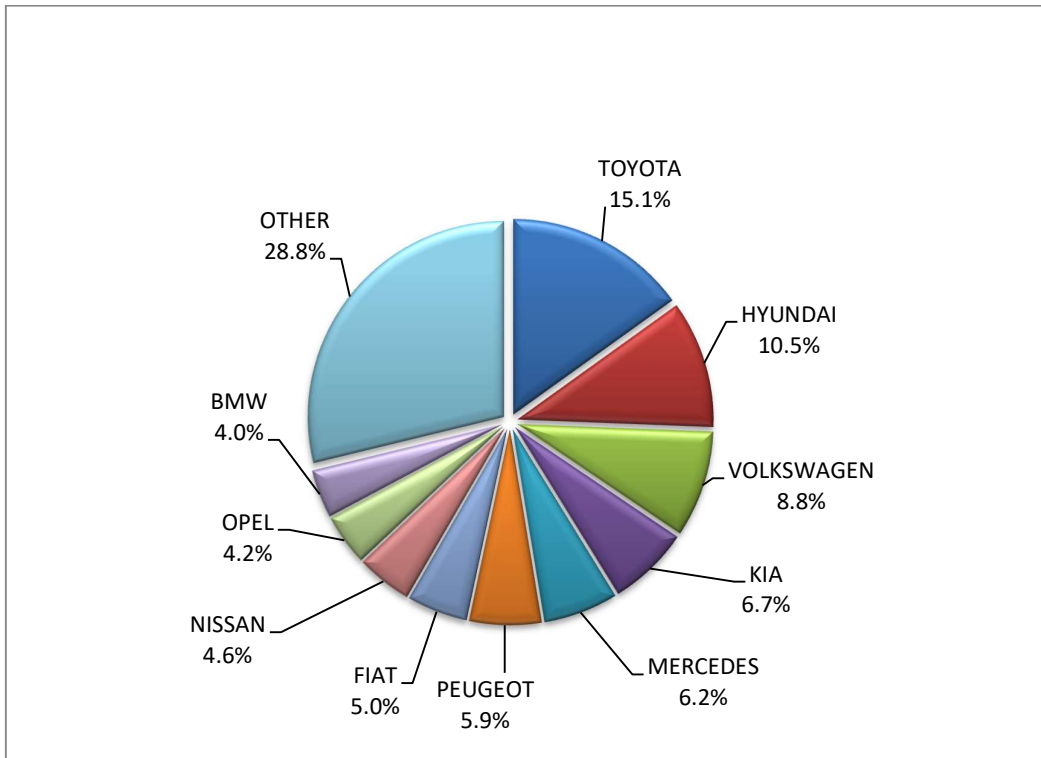
Table 4 (cont)
Sales of new and used passenger cars by make: May 2022 and January - May 2022

Make	Passenger cars			
	May		January - May	
	new	used	new	used
MERCEDES	743	321	2,200	1,546
MERCEDES ¹	5	-	8	-
MINI	213	43	813	186
MINI MAFER	-	-	-	1
MITSUBISHI	2	103	263	411
MOBILVETTA DESI	-	-	-	1
MORGAN	-	1	-	1
NISSAN	553	484	1,445	2,490
NISSAN ¹	6	-	21	-
OPEL	508	557	2,721	2,420
PEUGEOT	711	444	3,163	1,967
PEUGEOT ²	-	-	23	-
PORSCHE	9	32	60	168
QUATTRO	-	-	-	1
RANGE ROVER	-	4	-	14
RENAULT	197	808	963	3,651
RIMOR	1	-	1	-
ROLLER TEAM	1	-	1	-
SAAB	-	-	-	4
SEAT	144	87	423	374
SKODA	294	160	1,130	758
SMART	1	167	20	955
SSANGYONG	-	1	-	6
SUBARU	8	6	43	31
SUN LIVING	-	-	-	1
SUZUKI	350	182	1,329	811
TATA	-	1	-	1
TESLA	19	1	210	12
TOYOTA	1,807	674	6,482	3,345
TRIGANO	-	-	-	2
VOLKSWAGEN	1,061	351	3,452	1,698
VOLVO	199	19	709	99
WEINSBERG	-	-	-	3
ZHIDOU, ZD, ELARIS	-	-	1	-
TOTAL	11,994	7,169	43,725	33,983

1 : With 2nd/3rd stage manufacturer in Greece.

2 : With 2nd/3rd stage manufacturer abroad.

Graph 8. Sales of new passenger cars by make (May 2022)



Graph 9. Sales of new passenger cars by make (January – May 2022)

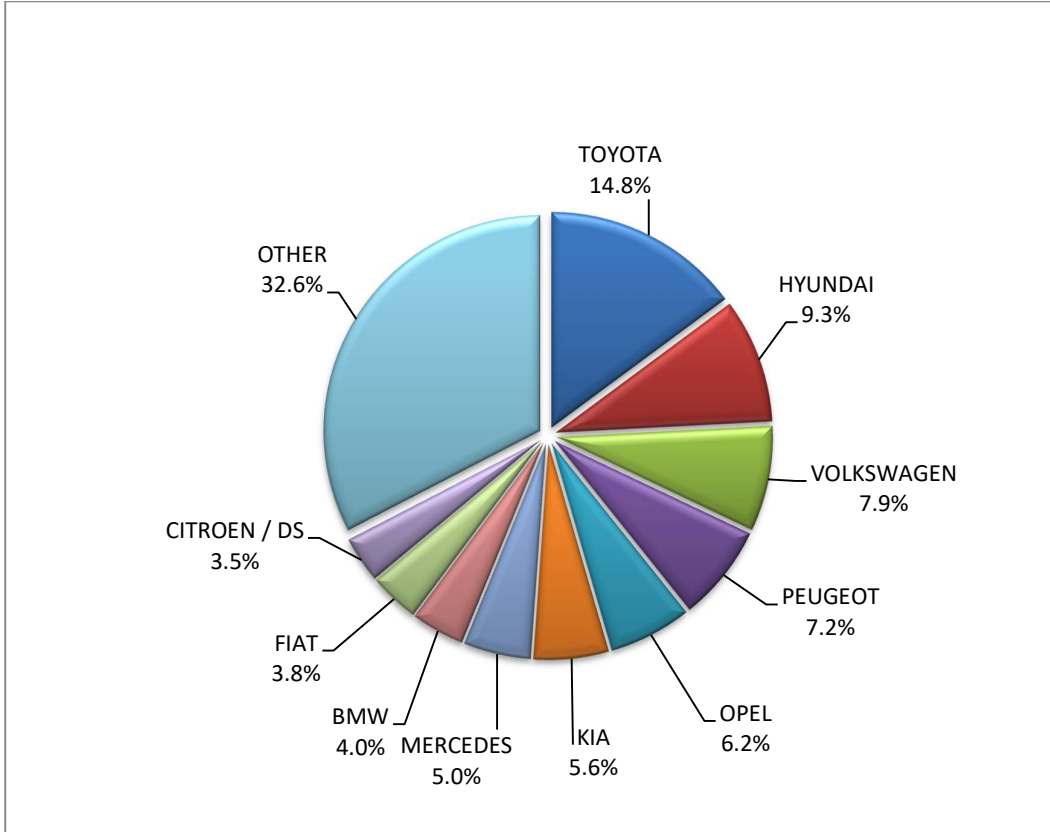


Table 5
Sales of new and used lorries by make: May 2022 and January - May 2022

Make	Lorries			
	May		January - May	
	new	used	new	used
AIXAM	-	-	-	1
ASIA MOTOR	-	-	-	1
BYD	1	-	1	-
CHEVROLET	-	1	-	1
CHRYSLER	-	-	-	1
CITROEN	76	63	258	256
DACIA	-	6	-	27
DAF	-	53	1	253
DAF ¹	7	-	26	1
DAIHATSU	-	-	-	3
DFSK MOTOR CO.L	-	-	-	1
DODGE	-	-	-	3
FCA US LLC	-	-	-	2
FIAT	92	153	719	704
FIAT-IVECO	-	3	-	14
FORD	190	201	534	986
FORD ¹	8	0	29	1
HYUNDAI	-	5	-	12
ISUZU	17	9	69	68
ISUZU ¹	-	-	2	-
IVECO	5	27	9	140
IVECO ¹	2	0	11	0
IVECO ²	-	-	-	1
IVECO MAGIRUS	-	-	-	10
JEEP	3	1	59	8
KIA	-	-	-	5
KIEFER	-	-	-	1
LAND ROVER	-	-	2	6
LEVC	2	-	6	-
MAHINDRA	-	-	-	1
MAN	-	75	1	444
MAN ¹	8	0	15	1
MAXUS, LDV	1	-	7	-
MAZDA	-	4	-	14
MERCEDES	26	359	126	1,838
MERCEDES ¹	16	1	99	5
MERCEDES ²	-	-	1	1
MITSUBISHI	8	36	147	180
MITSUBISHI ¹	8	0	58	0
NISSAN	16	44	45	249
OPEL	36	53	236	303
OVRIGA	-	-	-	1
PEUGEOT	66	65	283	325
PFAU	-	-	-	2

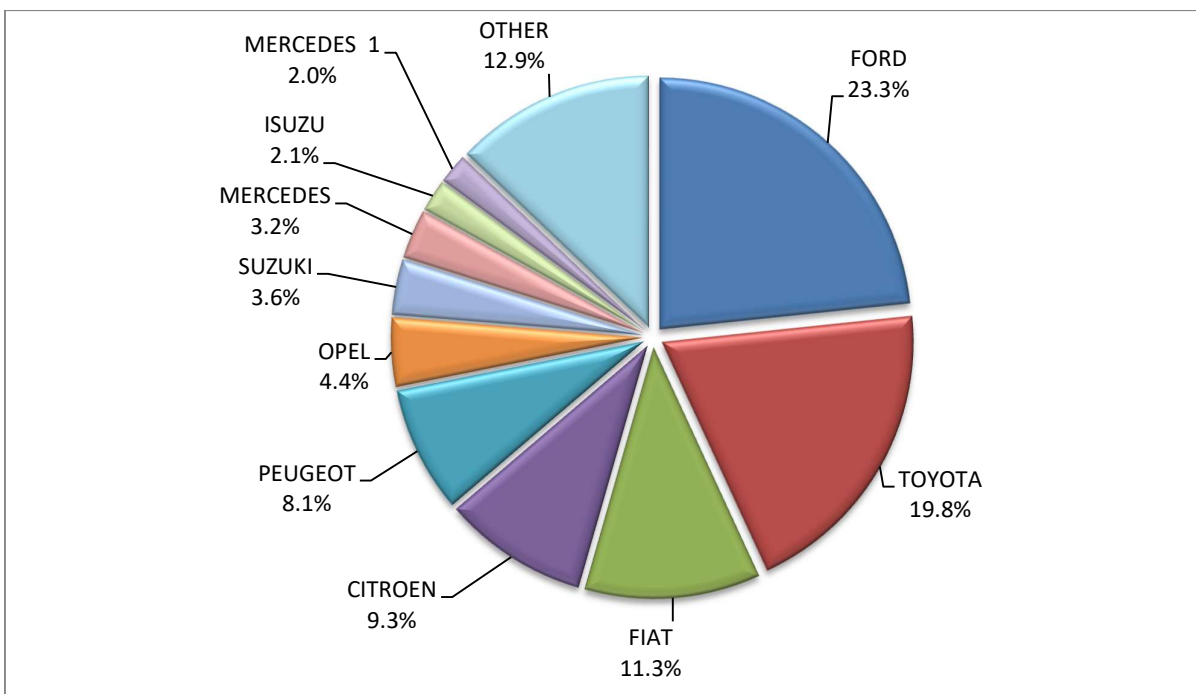
Table 5 (cont)
Sales of new and used lorries by make: May 2022 and January - May 2022

Make	Lorries			
	May		January - May	
	new	used	new	used
PIAGGIO	7	5	14	12
PIAGGIO ¹	1	-	6	-
POLARIS	-	-	1	-
RAM	-	1	-	1
RENAULT	7	125	44	594
SCANIA	1	65	9	357
SCANIA ¹	-	-	1	1
SEAT	-	-	-	1
SKODA	-	2	-	12
SSANGYONG	-	-	-	4
STEYER	-	1	-	1
SUZUKI	29	-	118	-
TERBERG	-	-	-	1
TOYOTA	161	25	741	157
VOLKSWAGEN	14	76	92	315
VOLVO	6	101	30	522
VOLVO ¹	-	-	19	1
TOTAL	814	1,560	3,819	7,849

1 : With 2nd/3rd stage manufacturer in Greece.

2 : With 2nd/3rd stage manufacturer abroad.

Graph 10. Sales of new lorries by make (May 2022)



Graph 11. Sales of new lorries by make (January – May 2022)

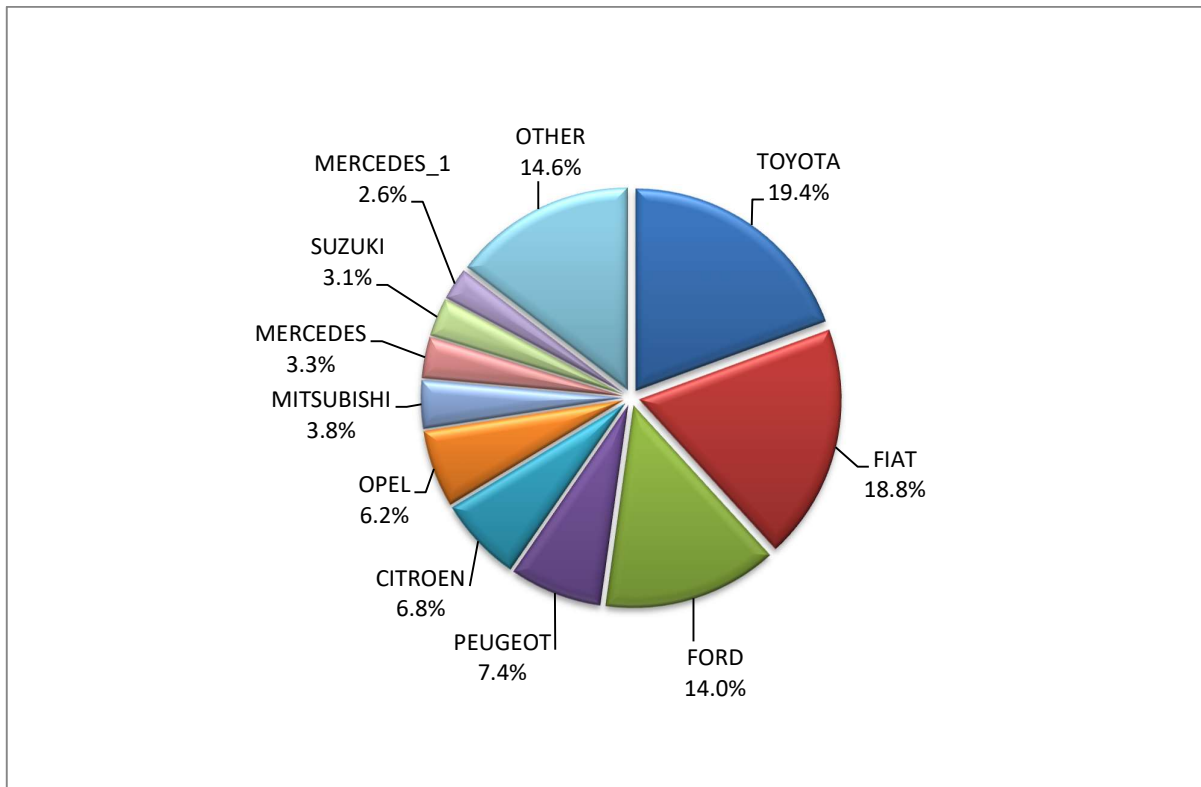


Table 6
Sales of new and used buses by make: May 2022 and January - May 2022

Make	Buses			
	May		January - May	
	new	used	new	used
BOVA	-	3	-	19
DAF	-	-	-	1
EVOBUS	-	1	-	6
FIAT	-	-	-	1
FORD	2	2	12	11
FORD ¹	1	-	1	-
GULERYUZ	-	-	-	1
HEULIEZ BUS	-	-	-	1
IRISBUS	-	2	-	2
ISUZU, AOS, GLOBUS	-	-	3	-
IVECO	-	1	1	5
KARSAN	-	-	1	-
MAN	-	4	-	30
MAN/NEOPLAN	-	-	-	1
MERCEDES	-	59	-	250
MERCEDES ¹	24	1	58	2
MERCEDES ²	2	10	13	10
MERCUS	-	1	-	2

Table 6 (cont)
Sales of new and used buses by make: May 2022 and January - May 2022

Make	Buses			
	May		January - May	
	new	used	new	used
NEOPLAN	-	1	-	6
OTOKAR	-	-	-	4
RENAULT	-	-	-	1
SCANIA	-	1	-	3
SETRA	-	9	-	51
TEMSA	-	2	-	4
UNVI	-	-	-	2
VAN HOOL	-	-	-	1
VOLVO	-	-	-	2
XIAMEN KING LONG	-	2	-	4
TOTAL	29	99	89	420

1 : With 2nd/3rd stage manufacturer in Greece.

2 : With 2nd/3rd stage manufacturer abroad.

Graph 12. Sales of new buses by make (January – May 2022)

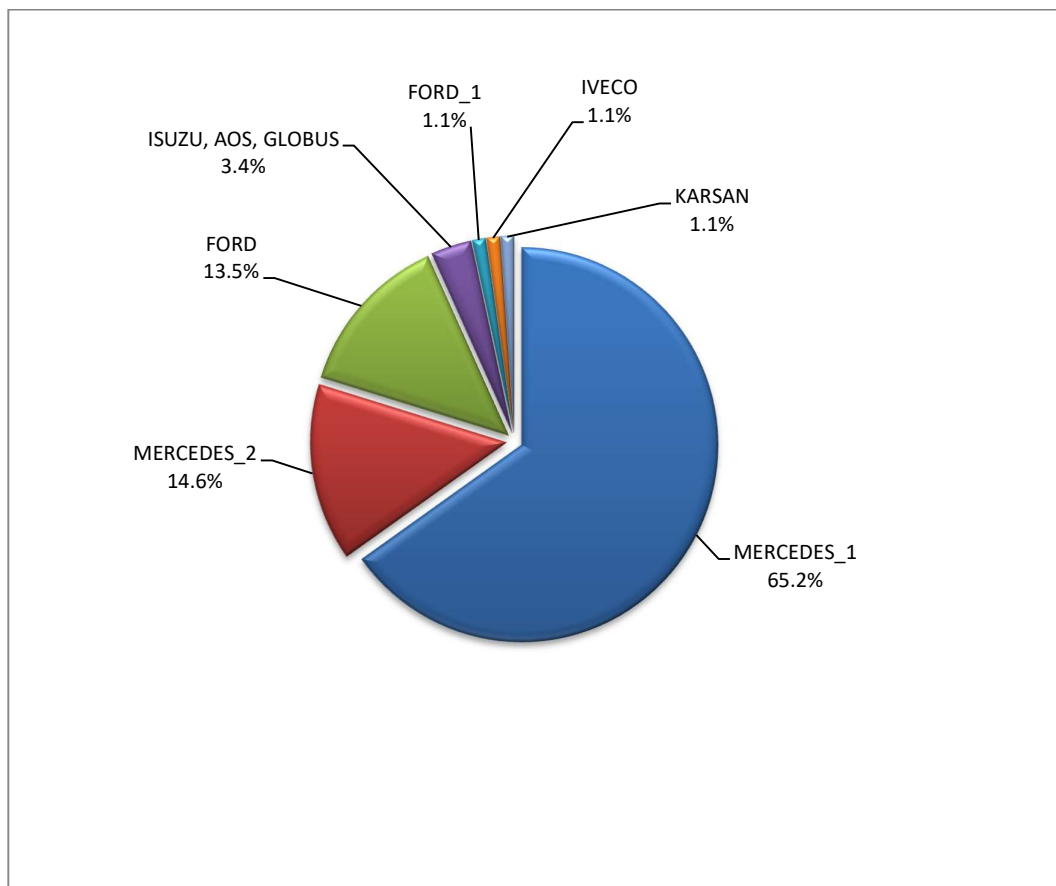


Table 7
Sales of new and used motorcycles by make or manufacturer: May 2022 and January - May 2022

Make	Motorcycles			
	May		January - May	
	new	used	new	used
AIDEA	-	-	1	-
APRILIA	91	11	208	28
APRILIA, DERBI, GILERA di Piaggio & C. S.p.A.	-	1	-	2
ARENA, ELYX, MIFUN, VMOTO	2	-	3	-
ASKOLL	-	-	1	1
BAJAJ	21	-	39	1
BASHAN, AMGroup, AMGroup Bike, DON, RBIS, WORKER BEAR, Nomik ATV 2, APACHI, ISILDAR	4	-	13	-
BASHAN, APACHI, ISILDAR APACHI, ISILDAR, APACHE, ADVENTUREMOTORS	1	-	1	-
BELGARDA SPA	-	1	-	1
BENELLI	34	2	106	5
BETA	5	-	56	7
BMW	97	26	359	117
BOMBARDIER RECREATIONAL PRODUCTS ING (BRP)	-	-	6	1
BRIXTON	14	1	60	1
BSA	-	1	-	1
BUELL	-	1	-	3
CECTEK	2	-	2	-
CFMOTO	346	1	840	6
CHONGOIG	-	1	-	1
CHONGQING LIFAN	-	-	-	1
DAELIM	-	1	-	3
DAYANG, DAYTONA MOTORS, NIPPONIA, DOCKER, WAYEL, SUMCO, VEEROAD, CETUR, RUTEC	6	-	35	-
DAYANG, DAYTONA MOTORS, NIPPONIA, DYMOTO, DOCKER, VEEROAD, EVO MOTORS, SUMCO, CETUR, HANSOM	11	-	11	-
DAYANG, DAYTONA MOTORS, NIPPONIA, DYMOTO, VEEROAD, EVO MOTORS, MH MOTORCYCLES, FKM, FKMOTORS	3	-	5	-
DAYANG, DAYTONA MOTORS, NIPPONIA, KUBA, VEEROAD, SUMCO, CETUR, RUTEC	122	-	395	1
DAYANG, DAYTONA MOTORS, NIPPONIA, VEEROAD	335	1	1,098	9
DAYANG, DAYTONA MOTORS, NIPPONIA, VEEROAD, DOCKER	70	-	306	1
DAYANG, ECOCREMO, ECOOTER, ECOOTOR,AGM, ORCAL, SUMCO	-	-	3	-
DAYANG, NIPPONIA, DAYTONA MOTORS, VEEROAD, SUMCO, DOCKER, MH MOTORCYCLES	11	-	25	-
DAYTONA	16	-	42	-
DMEMOTO, Elyx Smart, OPAI, DME	4	-	4	-
DUCATI	16	7	67	27
E-BROH	1	-	1	-
ECOOTER, ETRIX, AGM, DRAX, ORCAL, SUMCO	2	-	4	-
EFUN, ZAP	7	-	26	-
EMBUGGY, VINTAGE, EVANGEL	9	-	18	-
FANTIC MOTOR	-	-	4	-
FD MOTORS, FASPIDER, Daytona Motors, EVO Motors, Veeroad	7	-	28	-
FD MOTORS, FASPIDER, DAYTONA MOTORS, NIPPONIA, QUANTYA	5	-	9	-
FULU, LICH	-	-	1	-
GASGAS	2	1	12	2
GENERIC, EXPLORER, MALANCA, KSR Moto Austria, Motron Motorrad	2	-	19	-
GILERA	-	1	-	3
GOLDEN LION, SAKURA, ARTISAN, ETALIAN, E-mio, Fauro, Kito, Varaneo, Viverra	-	-	1	-
GPX	-	-	1	-
HARLEY DAVIDSON	3	18	4	47

Table 7 (cont)

Sales of new and used motorcycles by make or manufacturer: May 2022 and January - May 2022

Make	Motorcycles			
	May		January - May	
	new	used	new	used
HONDA	1,309	118	4,614	394
HOOOON, PICKMAN	1	-	1	-
HORWIN	-	-	2	-
HSUN	-	1	-	2
HSUN, HISUN, APACHI, Mx, MASAI, HYTRACK, TRAPPER, PUMAREX, GEON, ASYAMOTOR, DAYTONA MOTORS, KRAL	1	-	3	-
HUSQVARNA	7	5	51	14
HYOSUNG	-	-	1	-
IANYING, TYM, XINBEN, TEYIN, RIYA, ONGYUNDA, SANBEN, ALFA, Senzo, La Souris, TCB, KENTOYA	-	-	3	-
INDIAN MOTORCYCLE	4	-	10	2
ITALJET	1	-	3	-
JCADI, TILGREEN, Grupo Invicta MOTOR, e-broh, FAURO	1	-	2	-
JIANSHE	-	-	-	1
JIAYUAN	5	-	19	1
JINYI, JINYI MOTOR, DAYI MOTOR, AMGroup, AMGroup Bike, Twister Wheel, GREENWOLKE	-	-	1	-
KAWASAKI	4	3	18	32
KEEWAY	-	1	-	1
KSR MOTO AUSTRI	7	-	12	-
KTM	27	17	163	60
KUBA, MH MOTORCYCLES, MGB, SHINERAY, Daytona Motors, MASH	11	-	14	-
KWANG YANG	-	-	-	4
KYMCO	279	88	672	283
LAMBRETTA	1	-	13	-
LIFAN, HONLEI, QIPAI, SKYGO, GTS, PINK, Daytona MOTORS	-	-	2	-
Lingzhida, LINZDA, LINDN, LINYI, LONGMAO, NLIGHT	5	-	8	-
LINHAI, SINNIS	6	-	8	1
LONCIN, KINLON, LONGTING, KUBA, YUKI, MONDIAL, STMAX, KANUNI, MOTORAN, ASYA, QUSWA, PUMAREX, RALLY USA, MOD, CCM	3	-	3	-
LONCIN, KUBA, RKS, ITALIKA, SUNRACE, SKY, MALAGUTI, SUPERBIKE, ROCKET, NOVELBAT, TIGREMOTO, GREEN, TRIDIAMOND	42	-	128	2
LONCIN, VOGUE, KUBA, RKS, ITALIKA, SUNRACE, SKY, MALAGUTI, SUPERBIKE, ROCKET, NOVELBAT, TIGREMOTO	4	1	9	1
LONGJIA, ITALJET, ORCAL, BEELINE, ROMET MOTORS, GEMINI, LEXMOTO, JAHANRO, VGA, DAYTONA MOTORS	2	-	2	-
LONGJIA, ORCAL, NECO	65	-	110	-
LONGJIA, ORCAL, NECO, VGA, Gemini	6	-	11	-
LONGJIA, ORCAL, TNT MOTOR, BEELINE, VGA, ITALJET, GEMINI, lexmoto, Jahanro, italo, NECO	1	-	3	-
LVNENG	2	-	3	-
LVNENG, SKAND, VEMO, SMARTWAY, IVA, HYPE-BIKE, SENZO, MONASSO, genergia	1	-	1	-
MACBOR, RVM, COLOVE, ORCAL, DAYTONA MOTORS, ZF-KY, Lexmoto, OVER BIKES, YUKI, AJS	16	-	60	-
MALAGUTI	70	1	168	4
MELEX	1	-	3	-
MGK HM	47	1	61	1
MOTO GUZZI	11	1	31	2
MOTO MORINI	4	-	12	-
MOTRON MOTORRAD, ZONGSHEN	-	-	2	-
MV AGUSTA	-	1	5	2

Table 7 (cont)

Sales of new and used motorcycles by make or manufacturer: May 2022 and January - May 2022

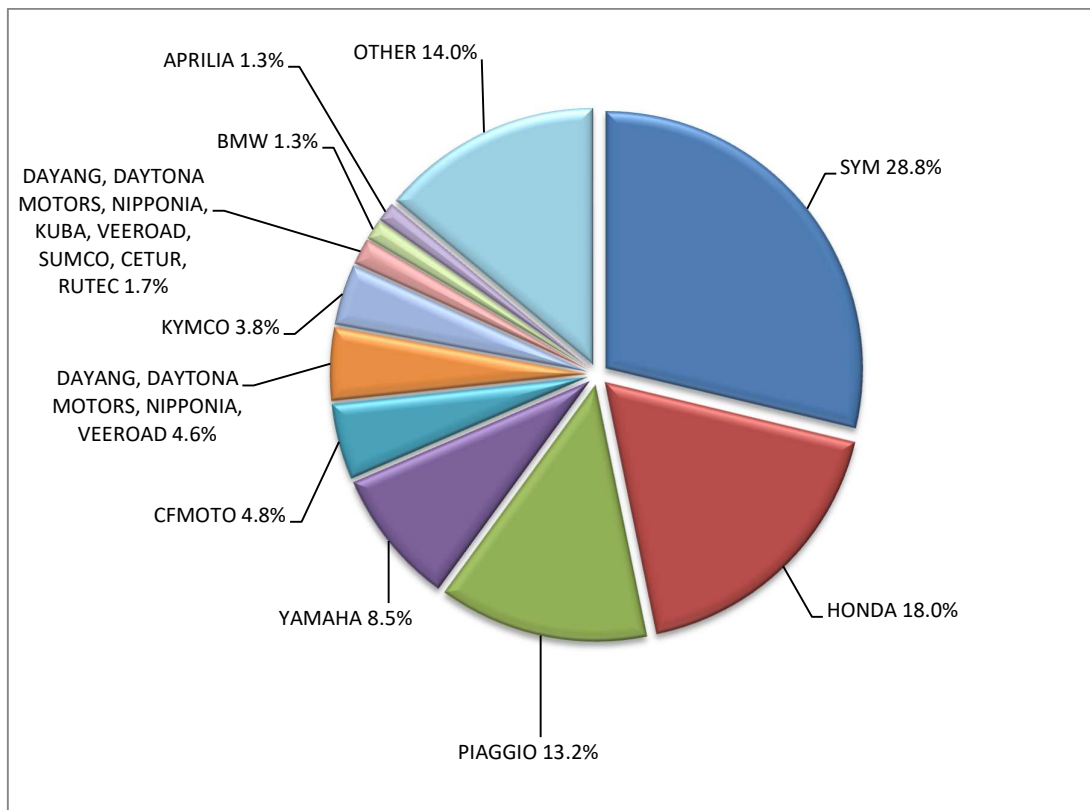
Make	Motorcycles			
	May		January - May	
	new	used	new	used
NACIONAL MOTOR SAU	-	1	-	1
NEV, N, FLYBO, JM, MALON, Herox, Baoya, ZILENT	-	-	-	1
NIU, NUUV	5	-	26	1
ORCAL,SOMOTO,AJS,SENKE,HERALD,ITALJET,WACCO,MOTOBI,CLEVELAND CYCLEWERKS ACE,MERCURY,SAXXX,SFM	-	-	1	-
PEUGEOT	1	6	5	15
PIAGGIO	961	54	2,765	212
POLARIS	34	-	53	1
QINGQI, I-MOTO	1	-	1	-
QINGQI, KADIRGA	3	-	3	-
QINGQI, PIONEER, KENROD, PEUGEOT	-	-	-	1
QJ	-	-	-	2
QJ , QJIANG, KEEWAY, LEONE	2	-	5	-
QJ, QJIANG, KEEWAY, LEONE, KUBA, RKS, TELL, EMPIRE KEEWAY, BENELLI, VENGO	1	-	9	-
QJ, QJIANG, KEEWAY, LEONE, RKS, BENELLI, EMPIRE KEEWAY, KUBA	-	-	6	-
QJ, QJIANG, KEEWAY, LEONE, tell, KUBA, RKS, BENELLI, VENGO	1	-	3	-
QUADRO, QUADRO VEHICLES	-	-	1	-
RAY ELECTRIC MOTORS	-	-	2	-
REDMOTO	-	1	-	1
RENAULT	-	-	-	6
RENLI	-	-	6	-
RIEJU, DRAC	1	-	1	-
ROYAL ENFIELD	10	-	53	-
Royalloy,Royal Alloy,RA,SCOMADI,VALENTINO,VALENTINO MOTORI	4	-	11	-
RVM, MACBOR, COLOVE, ORCAL, DAYTONA MOTORS	-	-	1	-
SAKURA, GOLDEN LION, ARTISAN, Fayro,ETALIAN, Viverra,Kito, E-mia,velca,E.F.O., E- KUMA,BOLIDE, LINZE	3	-	11	-
SAN YANG	-	1	-	4
SEGWAY	7	-	19	-
SENKE, SENKO, SENKI, SENKY, HALI, JIETOUBAWANG, NANLIAN, XINHALI,PGO, SENKE. HALI	3	-	3	-
SHANYANG, ATLAS PANTHER, YAMAZUKI MOTO, MOTORKING, Hirlee, XB	4	-	15	-
SHARE'NGO, ZHIDOU, ZD	2	-	5	-
SHENGWO NEW ENERGY, YUKI	2	-	18	-
SHERCO	2	-	7	2
SHINERAY, SWM	2	-	2	-
SILENCE, SCUTUM, ETRIX	4	-	15	-
SI-ZWEIRAD	-	-	-	1
SKYTEAM	-	1	-	1
SKYTEAM, SACIN, CSR, METALCO, SOKUDO, BAZUKA, MINICO, MOTOSBASI, MOTOS BORDOY, SUMKO, ROXON, MONKEY BIKES	2	-	13	2
SUKIDA, RARIRO, KAIER, HAOJIAN	1	-	1	-
SUZUKI	53	23	177	83
SWM	-	-	1	-
SYM	2,088	27	5,497	90
TARO, JUNAK, BARTON MOTORS ,ORCAL, Lexmoto	12	-	46	-
TARO, JUNAK, BARTON MOTORS, ORCAL, Lexmoto, MITT, NECO, WOTTAN, MAGPOWER, ADAMOTO MOTORCYCLES	36	-	36	-
TARO, JUNAK, BARTON MOTORS, ORCAL, Lexmoto, MITT, NECO, WOTTAN, MAGPOWER, ADAMOTO, MAXON, MAX-ON, TRMOTOR, CHUANL	16	-	40	-

Table 7 (cont)

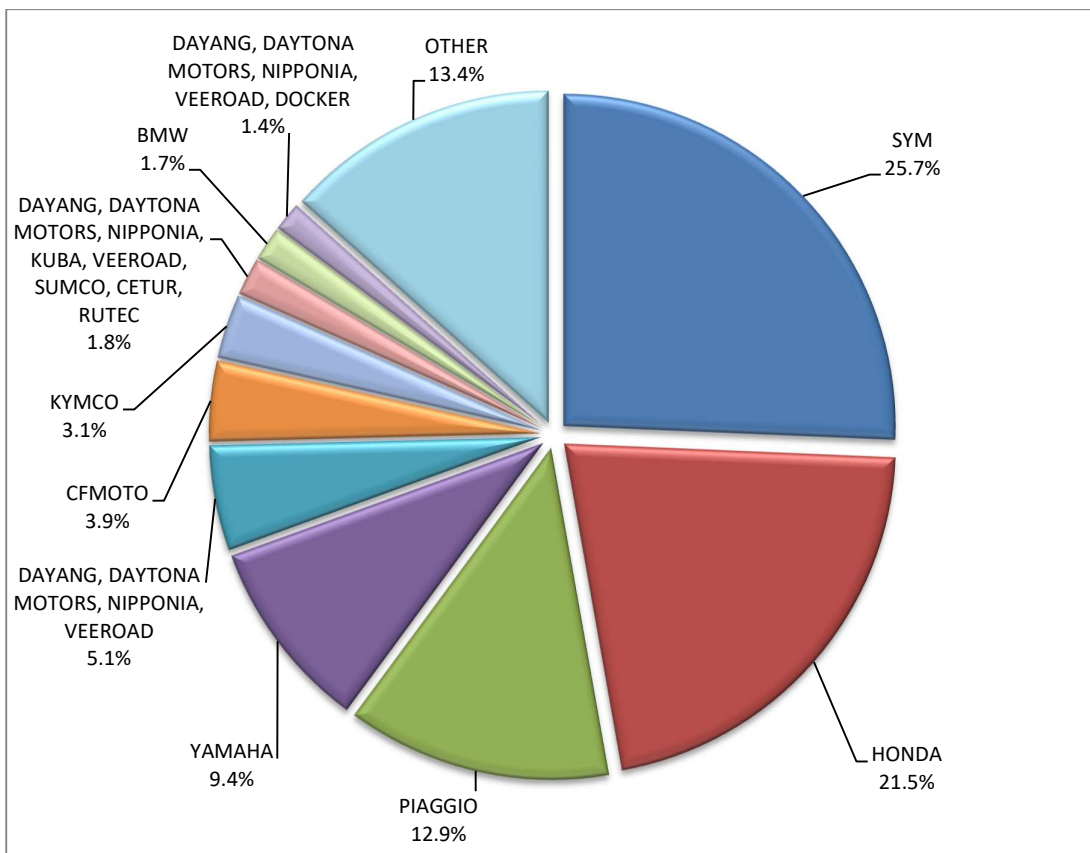
Sales of new and used motorcycles by make or manufacturer: May 2022 and January - May 2022

Make	Motorcycles			
	May		January - May	
	new	used	new	used
TARO, TRMOTOR, CHUANL, JUNAK, BARTON MOTORS, ORCAL, Lexmoto, MITT, NECO, WOTTAN, MAGPOWER, ADAMOTO MOTORCYCLES	4	-	5	-
TAURIS	-	1	-	1
TAYO, HAOJIANG, ZHONGYU, THUMP, THUMPSTAR, KIDEN, ZONTES, Junak, SENKE, TANNY, TYAN, ROMET, ROMET MOTORS, ROUTER	40	-	146	2
TAYO, ZONTES, KIDEN, Haojiang, ZHONGYU, Sharpon, TANNY, TYAN, Senke, BETA, Daytona Motors	37	1	72	1
TGB	5	-	5	1
TIANYING, RIYA, HONGYUNDA, TYM, HONLING, TAMCO, ALISON, DMK MOTORS, WLIE, LEEWAY, WLXQ, AP Gmoto, ALFA	2	-	4	-
TM RACING	-	-	1	-
TORROT, QUADRO VEHICLES	-	-	6	-
TRIUMPH	39	-	128	11
VMOTO-SOCO, E-MAX, VMOTO, SUPER SOCO	3	-	21	-
VOLTA, REVOLT, VTA, APEC, FAHR, PEAK	-	-	1	-
VOLTA, VTA, REVOLT	5	-	15	-
WONJAN, SAMADA	1	-	2	-
WONJAN, THRUST MOTOR, WMOTO, KEEWAY, TD	-	-	-	1
XGJAO	-	-	-	1
XGJAO, ZIPP, TOROS, ROMET, ROMET MOTORS, ROUTER, VEEROAD, DAYTONA MOTORS, GEMINI, MH MOTORCYCLES, MTG MOTORS	1	-	4	-
XINRI, SUNRA, APACHI, ISILDAR, ISILDAR APACHI, Wayscral, KRAL	12	-	26	-
XY	-	-	-	1
YAMAHA	620	126	2,007	400
YASAN MOTOR, Kito	1	-	2	-
YINGANG, BENYI, ROMET MOTORS, YUKI, ROUTER, MOTORAN, DAYTONA MOTORS, M1NSK, HAMACHI, KUBA, MONDIAL	1	-	3	-
ZERO MOTORCYCLES	3	-	5	-
ZHONGNENG, ZNEN, AGM, AJS, YUKI, COLIBRI, EUROCKA, BTC, NOVA MOTORS, LEXMOTO, Actionbikes Motors	1	-	6	-
ZHONGNENG, ZNEN, AGM, BTC, CLS, COLIBRI, DAYTONA MOTORS, DERRACE, DOCKER, JM MOTORS, KUBA, La souris, LEXMOTO	27	-	42	-
ZONGSHEN, ZIP STAR, Lexmoto, ICONE, VORTEX, M1NSK, MACBOR, MONDIAL, ROMET MOTORS, SINNIS, SPARKSTER, OVER BIKES	5	-	13	-
ZONGSHEN, ZIPSTAR, ZEALSUN, KENTO	-	-	2	-
TOTAL	7,261	555	21,420	1,919

Graph 13. Sales of new motorcycles (May 2022)



Graph 14. Sales of new motorcycles (January – May 2022)



EXPLANATORY NOTES

Survey on the issuing of new road motor vehicle circulation licenses	The survey on the issuing of new motor vehicle circulation licenses is a census survey. The released data give information, at country level, on the brand and type of the motor vehicle, as well as whether it is new or used. The survey does not include vehicles that move on rails, trolley busses, agricultural tractors and machinery. In addition, the following are excluded: all motor vehicles of the Armed Forces, Police, Fire Brigade, State Services, Diplomatic Corps, Foreign Missions, and Invalids of Wars, as well as motorcycles with a cylinder capacity less than 50 cc.
Legal basis	Law 3832/2010
ReferencePeriod	May 2022
Coverage	The production of monthly data is based on the registers held by the Ministry of Infrastructure, Transport and Networks, which records all the monthly changes observed in the vehicle registration licenses at country level.
Definitions	<p>Road motor vehicle is any vehicle that, irrespective of the number of wheels, is moved by an engine and is designed to transport persons or cargo or both of them, either they are on the same single vehicle or on a trailer carried by the main motor vehicle.</p> <p>New road motor vehicle is any motor vehicle that is registered for the first time in Greece during the reference month and has not been put into circulation in any other country.</p> <p>Used motor vehicle is any motor vehicle that is registered for the first time in Greece and has been imported as a used one from abroad</p> <p>Passenger motor vehicle: it is a motor vehicle designed to carry mostly people, having no more than 9 seats, including the driver's seat.</p> <p>Bus: it is a motor vehicle, which is designed to carry mostly people, having more than 10 seats, including the driver's seat. In the corresponding tables of this Press Release, this category also includes articulated buses.</p> <p>Lorry: it is motor vehicle designed to carry mostly cargo. In the corresponding tables of this Press Release, this category also includes tractors, tow trucks, articulated tractors, and trucks with trailers.</p> <p>Motorcycle: any two-wheeled motor vehicle, with or without sidecar, with maximum authorized design speed over 45 km/h, or in case it is powered by a combustion engine, with a cylinder capacity of 50 cc or over. In the corresponding tables of this Press Release, this category also includes the three-wheeled motor vehicles – motor tricycles.</p> <p>Tricycle motor vehicle: it is a motor vehicle with three symmetrical wheels with maximum authorized design speed over 45 km/h, or in case it is powered by a combustion engine, with a cylinder capacity over the 50 cc. This category also includes four-wheel vehicles, except the light four-wheel motorcycles, whose empty vehicle tare (excluding the weight of the fuel or mixture of fuel-oil or the weight of the batteries for electric cars) is up to 400 kg in the case the vehicle is designed for passenger use or up to 550 kg in case the vehicle is designed to carry cargo and whose engine is up to 15KW.</p>
Methodology	Exhaustive Survey. The primary data derive from the Ministry of Infrastructure, Transport and Networks and are based on the issuing of new circulation licenses as they are registered by the Regional Offices for Transport and Communications.
References	More information (graphs, tables) concerning the survey on the issuing of new motor vehicle circulation licenses are available on the webpage of ELSTAT, www.statistics.gr , under the link http://www.statistics.gr/en/statistics/-/publication/SME24/-