



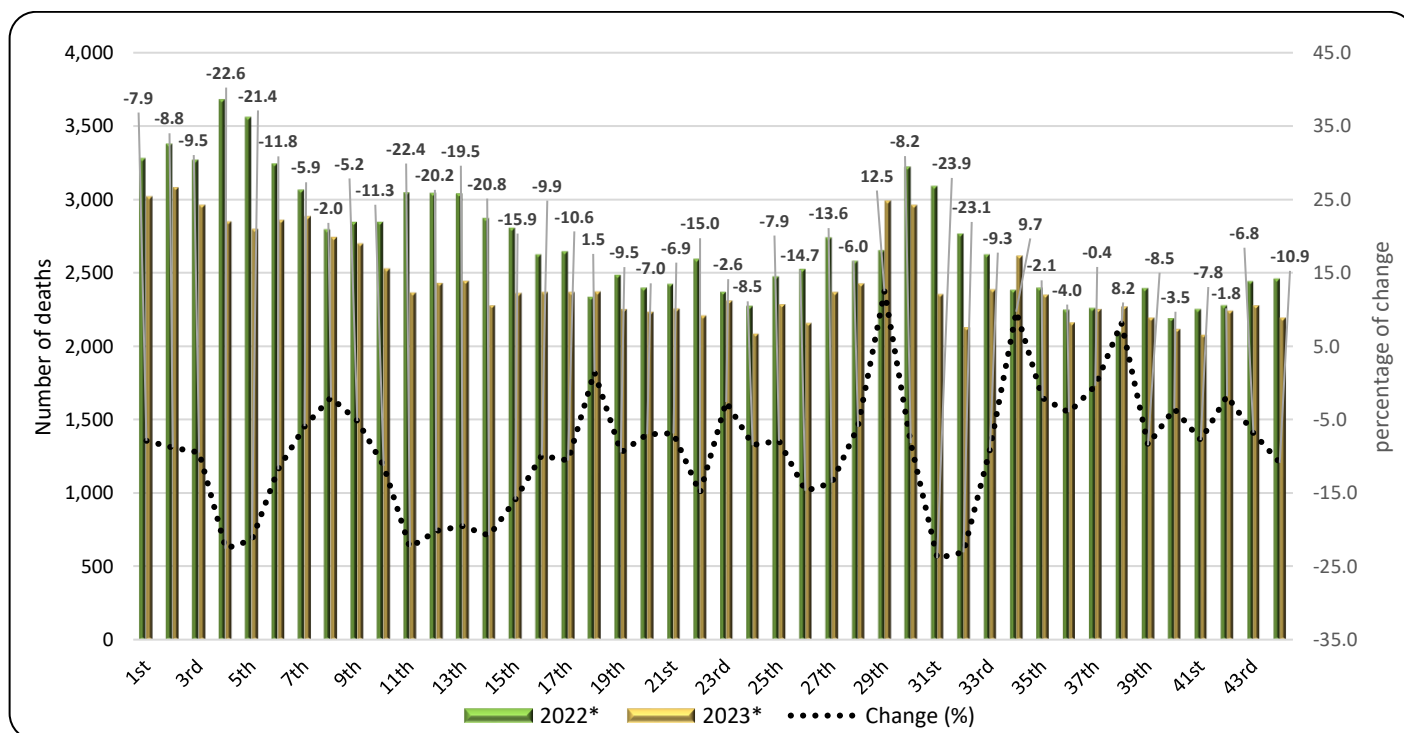
## HELLENIC STATISTICAL AUTHORITY

DATA ON WEEKLY DEATHS: Period 1<sup>st</sup> to 44<sup>th</sup> week, 2023

The Hellenic Statistical Authority (ELSTAT) announces the provisional statistical data depicting the weekly evolution of death counts for the period from the first (1<sup>st</sup>) to the forty-fourth (44<sup>th</sup>) week of 2023 (2/1/2023 – 5/11/2023). Data refer to the deaths that occurred in the Greek territory during that period due to various causes including deaths attributed to Covid-19.

The data included in this publication are compiled within the framework of the Vital Statistics Survey, are drawn from civil registry acts as submitted by Municipal Authorities and refer to vital events declared and registered until the date of data transmission. Overdue registrations of deaths are integrated at a later stage in the date of occurrence. According to these data, **the number of deaths in Greece during the first forty-four (44) weeks of 2023 (2/1/2023 – 5/11/2023) amounted to 107,473** (54,448 men and 53,025 women), **whereas during the corresponding period of 2022 (3/1/2022 – 6/11/2022) had amounted to 119,002** (59,751 men and 59,251 women) recording a decrease of 11,529 deaths (-9.7%). A decrease of 1,661 deaths (-1.5%) is recorded compared to the first forty-four (44) week cumulative average of the six-year period 2017 – 2022 (109,134 deaths). The corresponding annual rates of change for the period 2017 - 2022 amount to 0.7% in 2022 compared to 2021 (118,231), 11.2% in 2021 compared to 2020 (106,344), 0.8% in 2020 compared to 2019 (105,529), 5.0% in 2019 compared to 2018 (100,457) and -4.5% in 2018 compared to 2017 (105,242) (Tables 1, 2, 3 and 4).

Graph 1. Weekly evolution of deaths for the weeks 1<sup>st</sup> – 44<sup>th</sup>, 2022 and 2023



\*Provisional data

**Information on methodological issues:**

Population, Employment and Cost of Living Statistics Division

Population and Migration Statistics Section

Thymoglou Georgia, tel: +30 213 135 2175, e-mail: [g.thymoglou@statistics.gr](mailto:g.thymoglou@statistics.gr)

Christou Christos, tel: +30 213 135 2884, e-mail: [c.christou@statistics.gr](mailto:c.christou@statistics.gr)

**Information on data provision:**

tel: +30 213 135 2022, 2308, 2310

e-mail: [data.dissem@statistics.gr](mailto:data.dissem@statistics.gr)

**Table 1. Weekly evolution of deaths, 2022 and 2023**

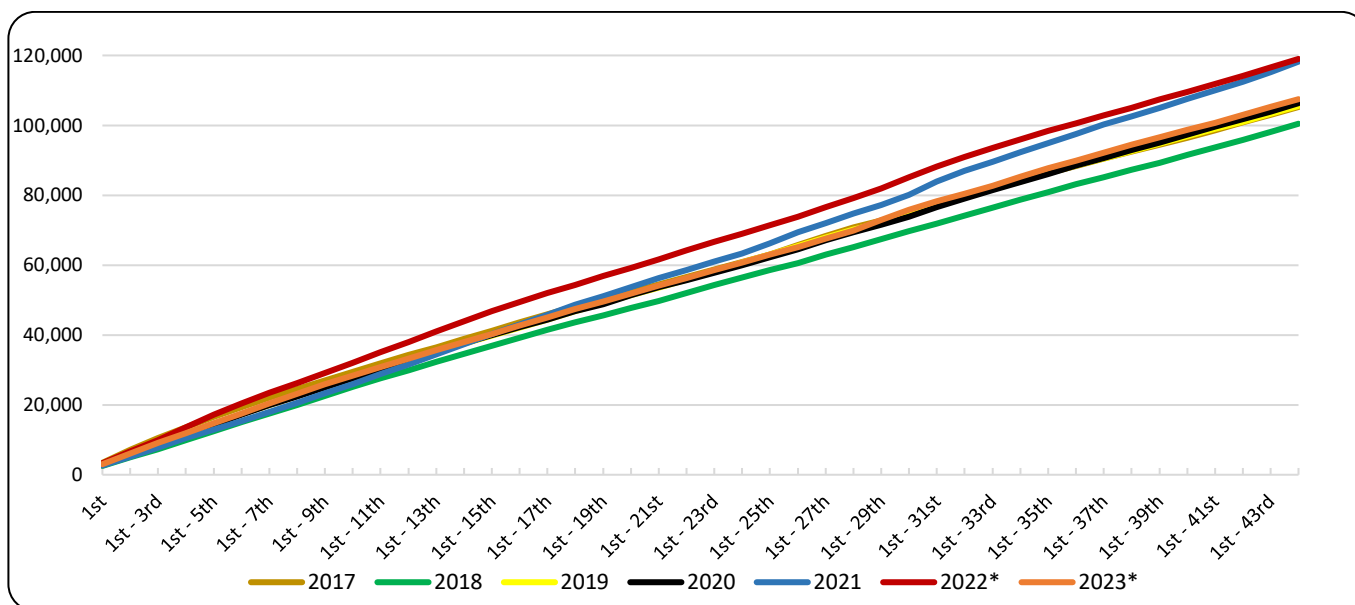
<b>Week</b>	<b>2022*</b>	<b>2023*</b>	<b>Change (%)</b>
1 <sup>st</sup>	3,278	3,018	-7.9
2 <sup>nd</sup>	3,378	3,080	-8.8
3 <sup>rd</sup>	3,269	2,957	-9.5
4 <sup>th</sup>	3,677	2,847	-22.6
5 <sup>th</sup>	3,558	2,797	-21.4
6 <sup>th</sup>	3,241	2,858	-11.8
7 <sup>th</sup>	3,065	2,884	-5.9
8 <sup>th</sup>	2,797	2,742	-2.0
9 <sup>th</sup>	2,847	2,698	-5.2
10 <sup>th</sup>	2,846	2,525	-11.3
11 <sup>th</sup>	3,046	2,363	-22.4
12 <sup>th</sup>	3,042	2,428	-20.2
13 <sup>th</sup>	3,037	2,444	-19.5
14 <sup>th</sup>	2,872	2,274	-20.8
15 <sup>th</sup>	2,806	2,359	-15.9
16 <sup>th</sup>	2,624	2,365	-9.9
17 <sup>th</sup>	2,647	2,366	-10.6
18 <sup>th</sup>	2,336	2,371	1.5
19 <sup>th</sup>	2,485	2,250	-9.5
20 <sup>th</sup>	2,398	2,230	-7.0
21 <sup>st</sup>	2,423	2,255	-6.9
22 <sup>nd</sup>	2,596	2,207	-15.0
23 <sup>rd</sup>	2,369	2,308	-2.6
24 <sup>th</sup>	2,276	2,083	-8.5
25 <sup>th</sup>	2,477	2,282	-7.9
26 <sup>th</sup>	2,526	2,154	-14.7
27 <sup>th</sup>	2,740	2,368	-13.6
28 <sup>th</sup>	2,580	2,425	-6.0
29 <sup>th</sup>	2,654	2,987	12.5
30 <sup>th</sup>	3,222	2,957	-8.2
31 <sup>st</sup>	3,088	2,350	-23.9
32 <sup>nd</sup>	2,765	2,125	-23.1
33 <sup>rd</sup>	2,626	2,383	-9.3
34 <sup>th</sup>	2,383	2,613	9.7
35 <sup>th</sup>	2,399	2,349	-2.1
36 <sup>th</sup>	2,249	2,160	-4.0
37 <sup>th</sup>	2,260	2,250	-0.4
38 <sup>th</sup>	2,098	2,269	8.2
39 <sup>th</sup>	2,394	2,190	-8.5
40 <sup>th</sup>	2,192	2,116	-3.5
41 <sup>st</sup>	2,253	2,077	-7.8
42 <sup>nd</sup>	2,280	2,240	-1.8
43 <sup>rd</sup>	2,441	2,276	-6.8
44 <sup>th</sup>	2,462	2,193	-10.9
<b>Total</b>	<b>119,002</b>	<b>107,473</b>	<b>-9.7</b>

\*Provisional data

According to the above data, for the first forty-four (44) weeks of 2023 compared to the corresponding period of 2022, a decrease of deaths is observed for all weeks, except from the 29<sup>th</sup> (17/7/2023 - 23/7/2023), the 34<sup>th</sup> (21/8/2023 - 27/8/2023), the 38<sup>th</sup> (18/9/2023 - 24/9/2023) and the 18<sup>th</sup> (1/5/2023 - 7/5/2023) week, which show an increase of 12.5%, 9.7%, 8.2% and 1.5% respectively. The highest percentage decreases of deaths are observed for the 31<sup>st</sup> (31/7/2023 - 6/8/2023), the 32<sup>nd</sup> (7/8/2023 - 13/8/2023) and the 4<sup>th</sup> (23/1/2023 - 29/1/2023) week by 23.9%, 23.1% and 22.6% respectively.

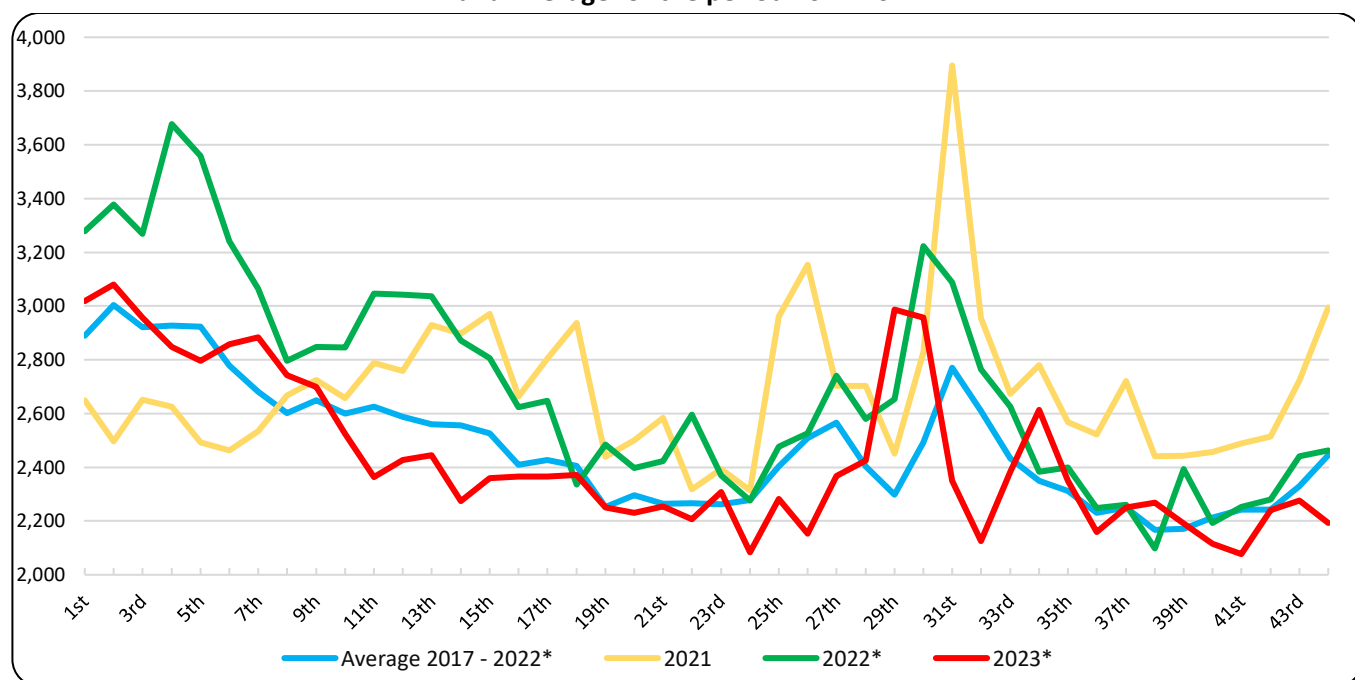
It should be noted that data are updated after integration of more recent data or upon revision of already transmitted data by the Registry Offices. Consequently, data may differ from those already announced in previous publications.

**Graph 2. Deaths for the weeks 1<sup>st</sup> – 44<sup>th</sup>, 2017 - 2023 (cumulative)**



\*Provisional data

**Graph 3. Deaths by week for the weeks 1<sup>st</sup> – 44<sup>th</sup>, 2021, 2022, 2023 and Average for the period 2017-2022**



\*Provisional data

**Table 2. Deaths for the weeks 1<sup>st</sup> – 44<sup>th</sup>, 2017 - 2023 (cumulative)**

<b>Week</b>	<b>2017</b>	<b>2018</b>	<b>2019</b>	<b>2020</b>	<b>2021</b>	<b>2022*</b>	<b>2023*</b>	<b>Average 2017 - 2022*</b>
1 <sup>st</sup>	3,425	2,533	2,706	2,749	2,650	3,278	3,018	2,890
1 <sup>st</sup> - 2 <sup>nd</sup>	7,105	4,986	5,811	5,659	5,147	6,656	6,098	5,894
1 <sup>st</sup> - 3 <sup>rd</sup>	10,469	7,331	8,850	8,522	7,798	9,925	9,055	8,816
1 <sup>st</sup> - 4 <sup>th</sup>	13,551	9,879	11,710	11,294	10,423	13,602	11,902	11,743
1 <sup>st</sup> - 5 <sup>th</sup>	16,553	12,484	14,603	14,284	12,916	17,160	14,699	14,667
1 <sup>st</sup> - 6 <sup>th</sup>	19,343	15,041	17,375	17,133	15,379	20,401	17,557	17,445
1 <sup>st</sup> - 7 <sup>th</sup>	22,018	17,510	19,938	19,915	17,914	23,466	20,441	20,127
1 <sup>st</sup> - 8 <sup>th</sup>	24,541	20,003	22,598	22,385	20,582	26,263	23,183	22,729
1 <sup>st</sup> - 9 <sup>th</sup>	26,940	22,613	25,367	24,928	23,306	29,110	25,881	25,377
1 <sup>st</sup> - 10 <sup>th</sup>	29,345	25,145	27,886	27,572	25,963	31,956	28,406	27,978
1 <sup>st</sup> - 11 <sup>th</sup>	31,789	27,560	30,356	30,168	28,751	35,002	30,769	30,604
1 <sup>st</sup> - 12 <sup>th</sup>	34,247	29,890	32,747	32,718	31,510	38,044	33,197	33,193
1 <sup>st</sup> - 13 <sup>th</sup>	36,500	32,255	35,079	35,157	34,440	41,081	35,641	35,752
1 <sup>st</sup> - 14 <sup>th</sup>	38,863	34,596	37,492	37,611	37,338	43,953	37,915	38,309
1 <sup>st</sup> - 15 <sup>th</sup>	41,226	36,945	39,804	39,973	40,309	46,759	40,274	40,836
1 <sup>st</sup> - 16 <sup>th</sup>	43,593	39,264	42,024	42,241	42,972	49,383	42,639	43,246
1 <sup>st</sup> - 17 <sup>th</sup>	45,918	41,439	44,427	44,446	45,777	52,030	45,005	45,673
1 <sup>st</sup> - 18 <sup>th</sup>	48,183	43,665	46,787	46,753	48,714	54,366	47,376	48,078
1 <sup>st</sup> - 19 <sup>th</sup>	50,342	45,645	49,110	48,880	51,153	56,851	49,626	50,330
1 <sup>st</sup> - 20 <sup>th</sup>	52,372	47,757	51,378	51,352	53,654	59,249	51,856	52,627
1 <sup>st</sup> - 21 <sup>st</sup>	54,385	49,778	53,588	53,681	56,238	61,672	54,111	54,890
1 <sup>st</sup> - 22 <sup>nd</sup>	56,597	52,001	55,869	55,644	58,556	64,268	56,318	57,156
1 <sup>st</sup> - 23 <sup>rd</sup>	58,718	54,303	58,154	57,745	60,949	66,637	58,626	59,418
1 <sup>st</sup> - 24 <sup>th</sup>	60,854	56,491	60,700	59,956	63,263	68,913	60,709	61,696
1 <sup>st</sup> - 25 <sup>th</sup>	63,024	58,571	63,076	62,308	66,223	71,390	62,991	64,099
1 <sup>st</sup> - 26 <sup>th</sup>	65,756	60,616	65,495	64,488	69,377	73,916	65,145	66,608
1 <sup>st</sup> - 27 <sup>th</sup>	68,298	62,977	67,872	67,158	72,080	76,656	67,513	69,174
1 <sup>st</sup> - 28 <sup>th</sup>	70,716	65,137	70,130	69,462	74,782	79,236	69,938	71,577
1 <sup>st</sup> - 29 <sup>th</sup>	72,806	67,493	72,227	71,598	77,233	81,890	72,925	73,875
1 <sup>st</sup> - 30 <sup>th</sup>	74,949	69,688	74,564	73,835	80,060	85,112	75,882	76,368
1 <sup>st</sup> - 31 <sup>st</sup>	77,256	71,919	76,950	76,549	83,955	88,200	78,232	79,138
1 <sup>st</sup> - 32 <sup>nd</sup>	79,982	74,207	79,341	79,078	86,909	90,965	80,357	81,747
1 <sup>st</sup> - 33 <sup>rd</sup>	82,270	76,492	81,702	81,446	89,582	93,591	82,740	84,181
1 <sup>st</sup> - 34 <sup>th</sup>	84,322	78,752	83,966	83,807	92,363	95,974	85,353	86,531
1 <sup>st</sup> - 35 <sup>th</sup>	86,398	80,930	86,322	86,105	94,930	98,373	87,702	88,843
1 <sup>st</sup> - 36 <sup>th</sup>	88,374	83,126	88,444	88,421	97,452	100,622	89,862	91,073
1 <sup>st</sup> - 37 <sup>th</sup>	90,474	85,189	90,528	90,695	100,173	102,882	92,112	93,324
1 <sup>st</sup> - 38 <sup>th</sup>	92,454	87,289	92,638	92,970	102,613	104,980	94,381	95,491
1 <sup>st</sup> - 39 <sup>th</sup>	94,380	89,311	94,725	95,126	105,055	107,374	96,571	97,662
1 <sup>st</sup> - 40 <sup>th</sup>	96,456	91,487	96,883	97,350	107,511	109,566	98,687	99,876
1 <sup>st</sup> - 41 <sup>st</sup>	98,641	93,731	98,953	99,563	110,000	111,819	100,764	102,118
1 <sup>st</sup> - 42 <sup>nd</sup>	100,871	95,895	101,076	101,707	112,514	114,099	103,004	104,360
1 <sup>st</sup> - 43 <sup>rd</sup>	103,028	98,156	103,246	103,931	115,236	116,540	105,280	106,690
1 <sup>st</sup> - 44 <sup>th</sup>	105,242	100,457	105,529	106,344	118,231	119,002	107,473	109,134
<b>Change (%)</b>		<b>-4.5</b>	<b>5.0</b>	<b>0.8</b>	<b>11.2</b>	<b>0.7</b>	<b>-9.7</b>	

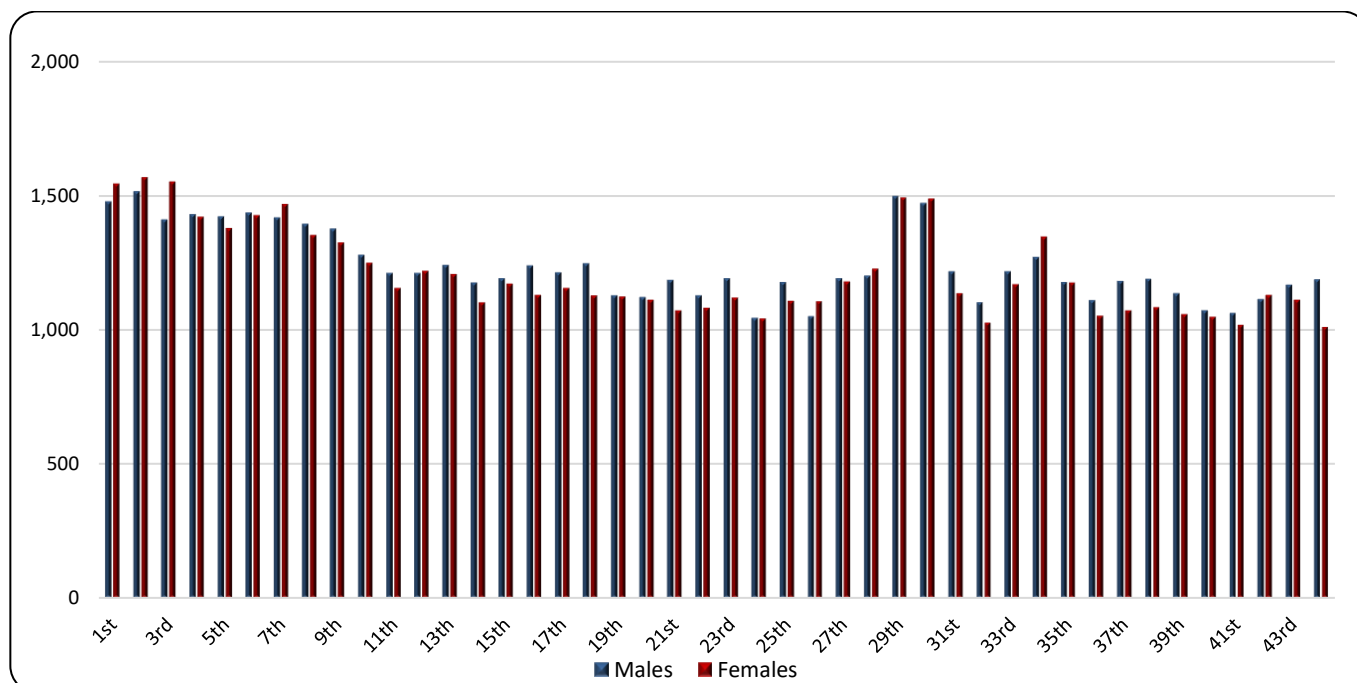
\*Provisional data

**Table 3. Weekly evolution of deaths by sex, for the weeks 1<sup>st</sup> – 44<sup>th</sup>, 2023\***

Week	Total	Males	Females
1 <sup>st</sup>	3,018	1,478	1,540
2 <sup>nd</sup>	3,080	1,515	1,565
3 <sup>rd</sup>	2,957	1,409	1,548
4 <sup>th</sup>	2,847	1,429	1,418
5 <sup>th</sup>	2,797	1,421	1,376
6 <sup>th</sup>	2,858	1,435	1,423
7 <sup>th</sup>	2,884	1,418	1,466
8 <sup>th</sup>	2,742	1,393	1,349
9 <sup>th</sup>	2,698	1,376	1,322
10 <sup>th</sup>	2,525	1,278	1,247
11 <sup>th</sup>	2,363	1,210	1,153
12 <sup>th</sup>	2,428	1,211	1,217
13 <sup>th</sup>	2,444	1,240	1,204
14 <sup>th</sup>	2,274	1,175	1,099
15 <sup>th</sup>	2,359	1,191	1,168
16 <sup>th</sup>	2,365	1,238	1,127
17 <sup>th</sup>	2,366	1,213	1,153
18 <sup>th</sup>	2,371	1,246	1,125
19 <sup>th</sup>	2,250	1,128	1,122
20 <sup>th</sup>	2,230	1,121	1,109
21 <sup>st</sup>	2,255	1,185	1,070
22 <sup>nd</sup>	2,207	1,127	1,080
23 <sup>rd</sup>	2,308	1,191	1,117
24 <sup>th</sup>	2,083	1,043	1,040
25 <sup>th</sup>	2,282	1,176	1,106
26 <sup>th</sup>	2,154	1,050	1,104
27 <sup>th</sup>	2,368	1,191	1,177
28 <sup>th</sup>	2,425	1,200	1,225
29 <sup>th</sup>	2,987	1,498	1,489
30 <sup>th</sup>	2,957	1,471	1,486
31 <sup>st</sup>	2,350	1,216	1,134
32 <sup>nd</sup>	2,125	1,101	1,024
33 <sup>rd</sup>	2,383	1,217	1,166
34 <sup>th</sup>	2,613	1,270	1,343
35 <sup>th</sup>	2,349	1,176	1,173
36 <sup>th</sup>	2,160	1,110	1,050
37 <sup>th</sup>	2,250	1,180	1,070
38 <sup>th</sup>	2,269	1,188	1,081
39 <sup>th</sup>	2,190	1,135	1,055
40 <sup>th</sup>	2,116	1,071	1,045
41 <sup>st</sup>	2,077	1,062	1,015
42 <sup>nd</sup>	2,240	1,113	1,127
43 <sup>rd</sup>	2,276	1,166	1,110
44 <sup>th</sup>	2,193	1,186	1,007
<b>Total</b>	<b>107,473</b>	<b>54,448</b>	<b>53,025</b>

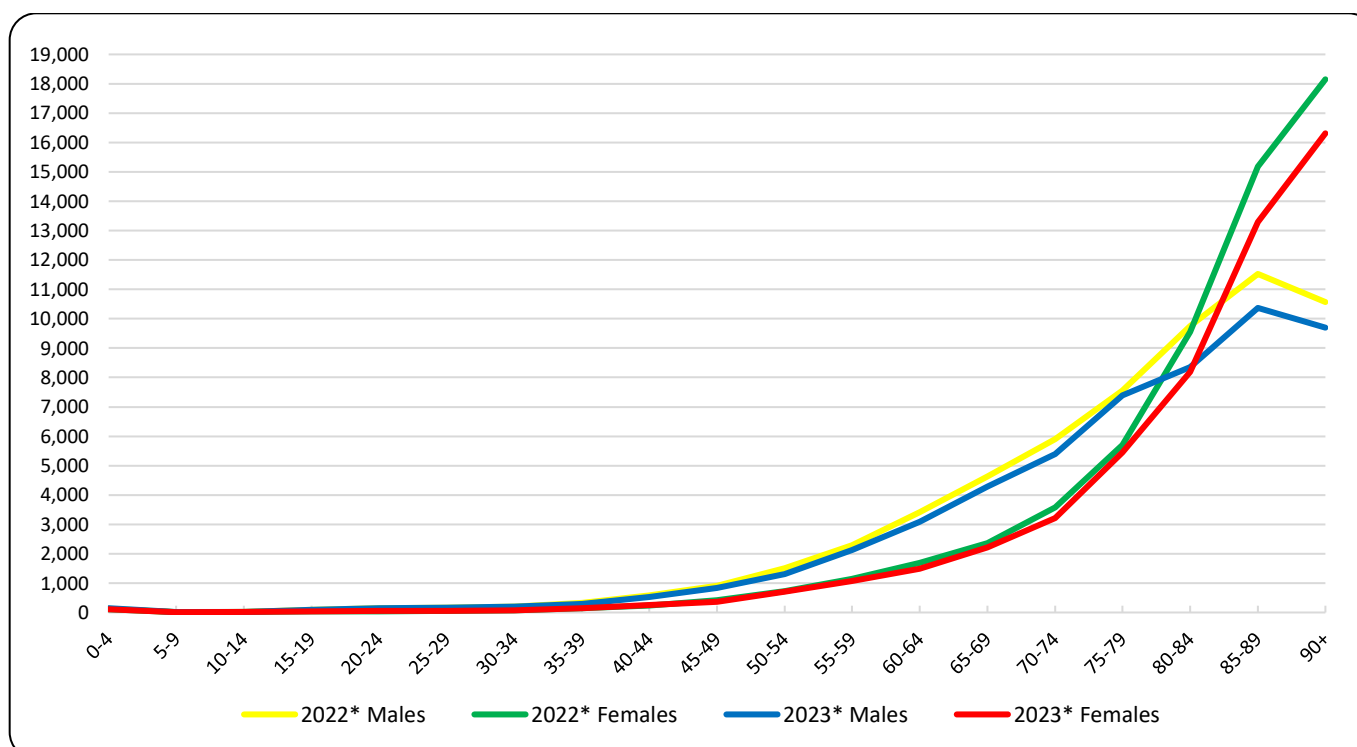
\*Provisional data

**Graph 4. Weekly evolution of deaths by sex, for the weeks 1<sup>st</sup> – 44<sup>th</sup>, 2023\***



\*Provisional data

**Graph 5. Deaths by age group and sex, 1<sup>st</sup> – 44<sup>th</sup> week, 2022 and 2023**



\*Provisional data

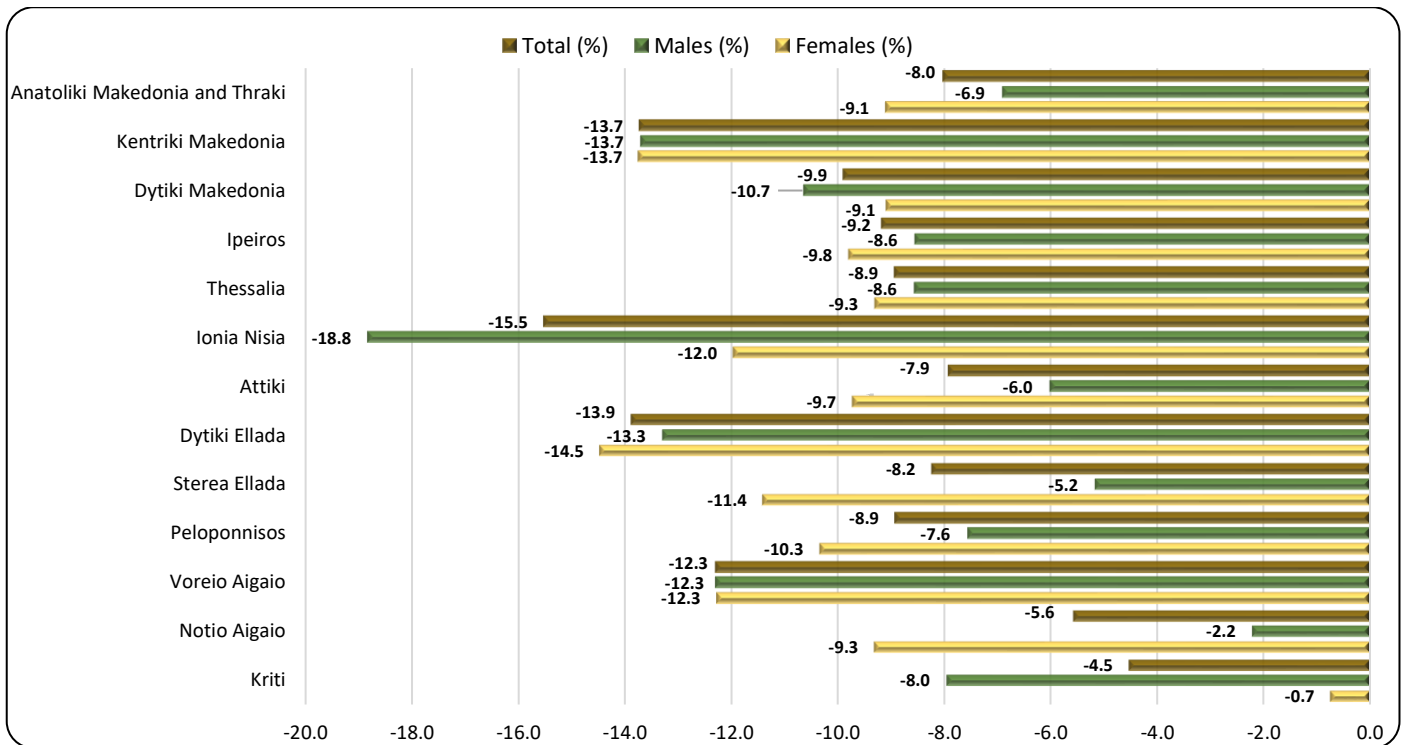
**Table 4. Deaths by age group and sex, weeks 1<sup>st</sup> – 44<sup>th</sup>, 2022 and 2023**

Age Group	2022*			2023*		
	Total	Males	Females	Total	Males	Females
0 - 4	234	128	106	255	146	109
5 - 9	25	12	13	24	15	9
10 - 14	43	27	16	35	24	11
15 - 19	120	90	30	127	87	40
20 - 24	191	154	37	189	139	50
25 - 29	216	160	56	202	156	46
30 - 34	266	197	69	265	200	65
35 - 39	486	332	154	428	288	140
40 - 44	820	578	242	775	527	248
45 - 49	1,335	911	424	1,203	839	364
50 - 54	2,234	1,505	729	2,031	1,314	717
55 - 59	3,436	2,287	1,149	3,192	2,127	1,065
60 - 64	5,118	3,423	1,695	4,561	3,080	1,481
65 - 69	6,998	4,632	2,366	6,499	4,286	2,213
70 - 74	9,474	5,899	3,575	8,606	5,395	3,211
75 - 79	13,257	7,553	5,704	12,842	7,386	5,456
80 - 84	19,297	9,749	9,548	16,541	8,351	8,190
85 - 89	26,711	11,526	15,185	23,664	10,369	13,295
90+	28,723	10,572	18,151	26,017	9,704	16,313
Unknown	18	16	2	17	15	2
<b>Total</b>	<b>119,002</b>	<b>59,751</b>	<b>59,251</b>	<b>107,473</b>	<b>54,448</b>	<b>53,025</b>

\*Provisional data

As regards the breakdown of data by age group, during the first forty-four (44) weeks of 2023 compared to the corresponding period of 2022, a decrease of deaths is observed for most age groups, with the highest decreases, in absolute figures, being observed for the age groups 85 to 89 (-3,047 deaths), 80 to 84 (-2,756 deaths) and over 90 (-2,706 deaths) (Table 4).

**Graph 6. Annual change of deaths 2023\*/2022\* (%) by sex and Region of usual residence, weeks 1<sup>st</sup> – 44<sup>th</sup>**



\*Provisional data

**Table 5. Annual change of deaths 2023/2022 (%) by sex and Region of usual residence, weeks 1<sup>st</sup> – 44<sup>th</sup>**

Region	2022*			2023*			Change (%)		
	Total	Males	Females	Total	Males	Females	Total	Males	Females
Anatoliki Makedonia and Thraki	6,997	3,473	3,524	6,435	3,232	3,203	-8.0	-6.9	-9.1
Kentriki Makedonia	21,123	10,583	10,540	18,222	9,131	9,091	-13.7	-13.7	-13.7
Dytiki Makedonia	3,282	1,688	1,594	2,957	1,508	1,449	-9.9	-10.7	-9.1
Ipeiros	3,822	1,935	1,887	3,471	1,769	1,702	-9.2	-8.6	-9.8
Thessalia	8,620	4,412	4,208	7,849	4,033	3,816	-8.9	-8.6	-9.3
Ionia Nisia	2,544	1,316	1,228	2,149	1,068	1,081	-15.5	-18.8	-12.0
Attiki	40,187	19,704	20,483	37,003	18,513	18,490	-7.9	-6.0	-9.7
Dytiki Ellada	7,799	3,923	3,876	6,716	3,401	3,315	-13.9	-13.3	-14.5
Sterea Ellada	6,469	3,297	3,172	5,936	3,126	2,810	-8.2	-5.2	-11.4
Peloponnisos	7,224	3,716	3,508	6,579	3,434	3,145	-8.9	-7.6	-10.3
Voreio Aigaio	2,187	1,096	1,091	1,918	961	957	-12.3	-12.3	-12.3
Notio Aigaio	2,726	1,438	1,288	2,574	1,406	1,168	-5.6	-2.2	-9.3
Kriti	5,914	3,098	2,816	5,646	2,851	2,795	-4.5	-8.0	-0.7
Unknown	108	72	36	18	15	3	-83.3	-79.2	-91.7
<b>Total</b>	<b>119,002</b>	<b>59,751</b>	<b>59,251</b>	<b>107,473</b>	<b>54,448</b>	<b>53,025</b>	<b>-9.7</b>	<b>-8.9</b>	<b>-10.5</b>
Abroad	771	514	257	866	588	278	12.3	14.4	8.2

\*Provisional data

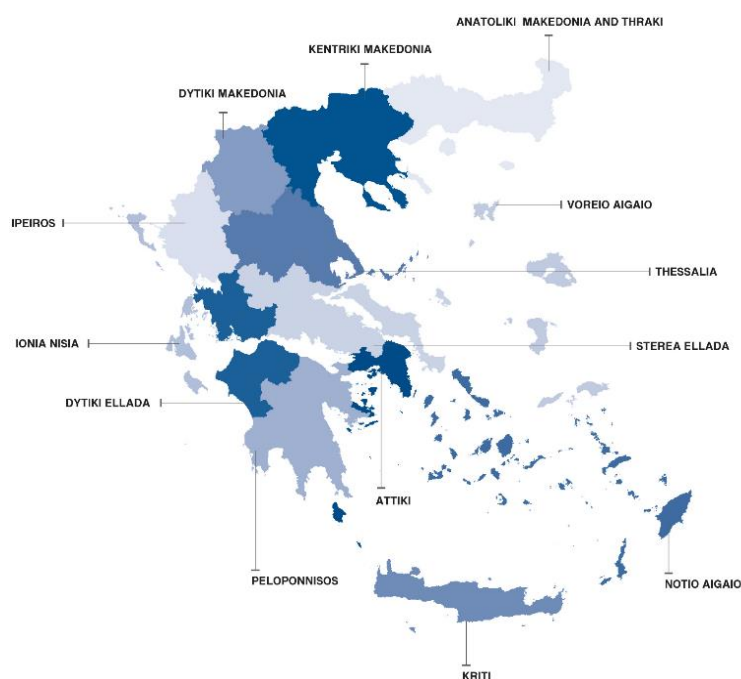
As regards the breakdown of data by place of usual residence of the deceased person, during the first forty - four (44) weeks of 2023, a decrease of deaths is observed in all thirteen (13) Regions of the Country, compared to the corresponding period of 2022. The most notable decreases, in absolute figures, are observed in the Regions of Attiki, Kentriki Makedonia and Dytiki Ellada by 3,184, 2,901 and 1,083 deaths respectively (Graph 6, Table 5).



## **EXPLANATORY NOTES**

<b>Vital Statistics-Data on weekly deaths</b>	For the Vital statistics Survey, data are drawn from civil registry acts edited by the Municipal Authorities. Data presented in this publication refer to the weekly evolution of death counts according to the international standard of weeks ISO8601. This is a data processing for the purpose of depicting, even using provisional data, the evolution of deaths in the Country and timely recording of mortality levels in relation to basic demographic variables.
<b>Reference periods</b>	2022: 3/1/2022 - 6/11/2022 2023: 2/1/2023 - 5/11/2023
<b>Legal Framework</b>	Law 344/76 concerning the “Registration of vital events” which lays down the obligations of the Civil Register Offices to collect and then transmit the data, as well as by Law 3832/2010 on the “Greek Statistical System”, both as amended.
<b>Coverage</b>	The Vital Statistics survey is an exhaustive survey and covers all deaths of usual resident population that occur in the Greek territory.
<b>Definitions</b>	<p>All deaths of usual residents taking place in the Greek territory are recorded, regardless of the cause of death. Deaths of usual resident population of other countries are also recorded but not counted. The deaths of migrant-refugees during their attempt to approach European countries are not included.</p> <p>Causes of death are defined according to the International Statistical Classification of Diseases and Related Health Problems (ICD-10) and basic categories are Diseases of the Circulatory System, Diseases of the Respiratory System, Neoplasms, Infectious and Parasitic Diseases, Violent deaths and other causes, Covid-19 included.</p>
<b>Methodology</b>	Data on deaths and vital statistics undergo the necessary quality checks, are processed, and presented in the form of tables.
<b>Geographical classification</b>	Geographical classification is based on the Nomenclature of Territorial Units for Statistics (NUTS). Data are disseminated at Country and Region (NUTS2) level.

**Map of the Regions (NUTS2) of Greece**



**International Standard of Dates** According to the international standard ISO8601 the first forty-four (44) weeks of 2022 and 2023 are defined as follows:

WEEK	2022	2023
1 <sup>st</sup>	3/1/2022 - 9/1/2022	2/1/2023 - 8/1/2023
2 <sup>nd</sup>	10/1/2022 - 16/1/2022	9/1/2023 - 15/1/2023
3 <sup>rd</sup>	17/1/2022 - 23/1/2022	16/1/2023 - 22/1/2023
4 <sup>th</sup>	24/1/2022 - 30/1/2022	23/1/2023 - 29/1/2023
5 <sup>th</sup>	31/1/2022 - 6/2/2022	30/1/2023 - 5/2/2023
6 <sup>th</sup>	7/2/2022 - 13/2/2022	6/2/2023 - 12/2/2023
7 <sup>th</sup>	14/2/2022 - 20/2/2022	13/2/2023 - 19/2/2023
8 <sup>th</sup>	21/2/2022 - 27/2/2022	20/2/2023 - 26/2/2023
9 <sup>th</sup>	28/2/2022 - 6/3/2022	27/2/2023 - 5/3/2023
10 <sup>th</sup>	7/3/2022 - 13/3/2022	6/3/2023 - 12/3/2023
11 <sup>th</sup>	14/3/2022 - 20/3/2022	13/3/2023 - 19/3/2023
12 <sup>th</sup>	21/3/2022 - 27/3/2022	20/3/2023 - 26/3/2023
13 <sup>th</sup>	28/3/2022 - 3/4/2022	27/3/2023 - 2/4/2023
14 <sup>th</sup>	4/4/2022 - 10/4/2022	3/4/2023 - 9/4/2023
15 <sup>th</sup>	11/4/2022 - 17/4/2022	10/4/2023 - 16/4/2023
16 <sup>th</sup>	18/4/2022 - 24/4/2022	17/4/2023 - 23/4/2023
17 <sup>th</sup>	25/4/2022 - 1/5/2022	24/4/2023 - 30/4/2023
18 <sup>th</sup>	2/5/2022 - 8/5/2022	1/5/2023 - 7/5/2023
19 <sup>th</sup>	9/5/2022 - 15/5/2022	8/5/2023 - 14/5/2023
20 <sup>th</sup>	16/5/2022 - 22/5/2022	15/5/2023 - 21/5/2023
21 <sup>st</sup>	23/5/2022 - 29/5/2022	22/5/2023 - 28/5/2023
22 <sup>nd</sup>	30/5/2022 - 5/6/2022	29/5/2023 - 4/6/2023
23 <sup>rd</sup>	6/6/2022 - 12/6/2022	5/6/2023 - 11/6/2023
24 <sup>th</sup>	13/6/2022 - 19/6/2022	12/6/2023 - 18/6/2023
25 <sup>th</sup>	20/6/2022 - 26/6/2022	19/6/2023 - 25/6/2023
26 <sup>th</sup>	27/6/2022 - 3/7/2022	26/6/2023 - 2/7/2023
27 <sup>th</sup>	4/7/2022 - 10/7/2022	3/7/2023 - 9/7/2023
28 <sup>th</sup>	11/7/2022 - 17/7/2022	10/7/2023 - 16/7/2023
29 <sup>th</sup>	18/7/2022 - 24/7/2022	17/7/2023 - 23/7/2023
30 <sup>th</sup>	25/7/2022 - 31/7/2022	24/7/2023 - 30/7/2023
31 <sup>st</sup>	1/8/2022 - 7/8/2022	31/7/2023 - 6/8/2023
32 <sup>nd</sup>	8/8/2022 - 14/8/2022	7/8/2023 - 13/8/2023
33 <sup>rd</sup>	15/8/2022 - 21/8/2022	14/8/2023 - 20/8/2023
34 <sup>th</sup>	22/8/2022 - 28/8/2022	21/8/2023 - 27/8/2023
35 <sup>th</sup>	29/8/2022 - 4/9/2022	28/8/2023 - 3/9/2023
36 <sup>th</sup>	5/9/2022 - 11/9/2022	4/9/2023 - 10/9/2023
37 <sup>th</sup>	12/9/2022 - 18/9/2022	11/9/2023 - 17/9/2023
38 <sup>th</sup>	19/9/2022 - 25/9/2022	18/9/2023 - 24/9/2023
39 <sup>th</sup>	26/9/2022 - 2/10/2022	25/9/2023 - 1/10/2023
40 <sup>th</sup>	3/10/2022 - 9/10/2022	2/10/2023 - 8/10/2023
41 <sup>st</sup>	10/10/2022 - 16/10/2022	9/10/2023 - 15/10/2023
42 <sup>nd</sup>	17/10/2022 - 23/10/2022	16/10/2023 - 22/10/2023
43 <sup>rd</sup>	24/10/2022 - 30/10/2022	23/10/2023 - 29/10/2023
44 <sup>th</sup>	31/10/2022 - 6/11/2022	30/10/2023 - 5/11/2023

**References** More information on deaths and Vital Statistics is available on the website of ELSTAT: <https://www.statistics.gr/en/home/> following the link: Statistics, Population and Social Conditions, Demography.