



HELLENIC REPUBLIC
HELLENIC STATISTICAL AUTHORITY

Piraeus, 29 December 2022

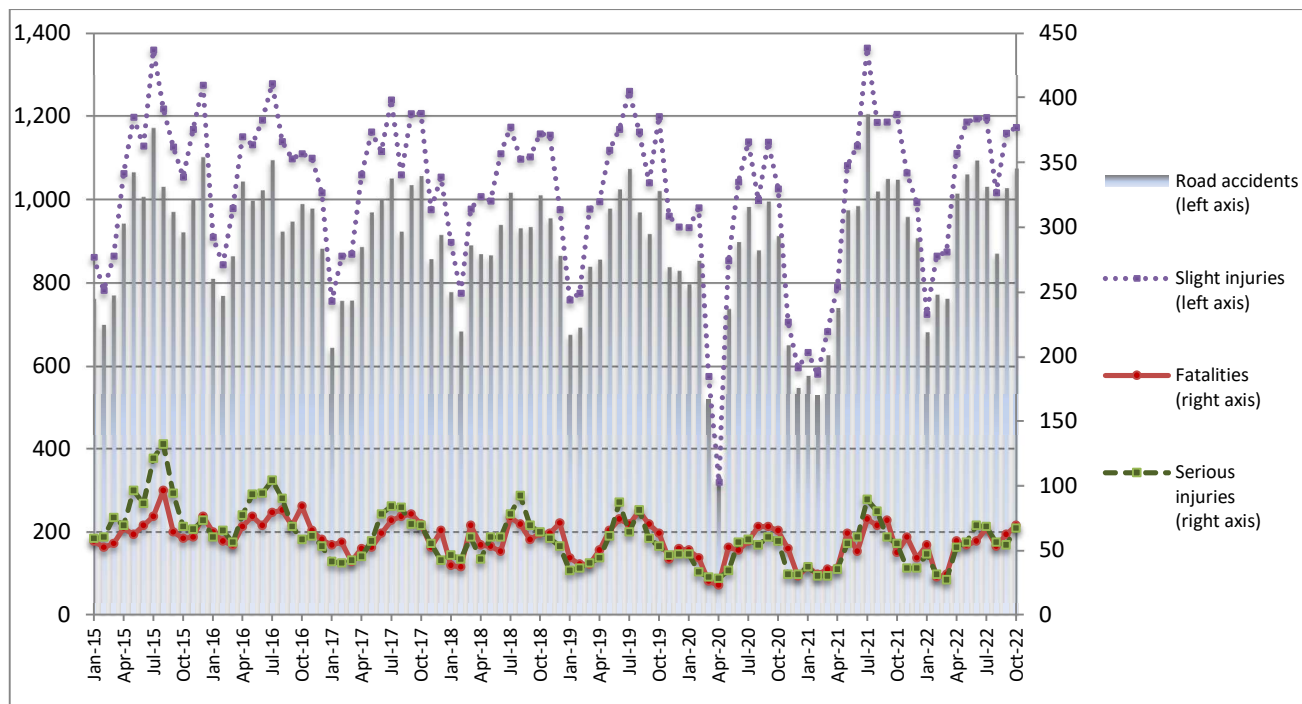
PRESS RELEASE

ROAD TRAFFIC ACCIDENTS: October 2022

The Hellenic Statistical Authority (ELSTAT) announces provisional¹ data from the survey on “Road Traffic Accidents” for October 2022. In particular, the road traffic accidents which occurred in Greece, resulting in death or injury, increased by 2.6% in comparison with the corresponding month of 2021 (1,074 road accidents in October 2022, against 1,047 road accidents in October 2021).

The casualties of the injury-causing accidents that occurred in October 2022 were as follows: 69 deaths, 67 serious injuries and 1,173 slight injuries. In contrast, in October 2021 the corresponding figures were: 48 deaths, 55 serious injuries and 1,205 slight injuries. Therefore, road traffic accident casualties in October 2022 increased by 43.8% for deaths, by 21.8% for serious injuries and decreased by 2.7% for slight injuries.

**Graph 1: Road traffic accidents and casualties,
January 2015 - October 2022**



Provisional data for the period November 2021 – October 2022

Information on methodological issues:

Sectoral Statistics Division
Transport Statistics Section
L. Miliara
Tel: +30 213 135 3095
e-mail: l.miliara@statistics.gr

Information for data provision:

Tel: +30 213 135 2022, 2308, 2310
e-mail: data.dissem@statistics.gr

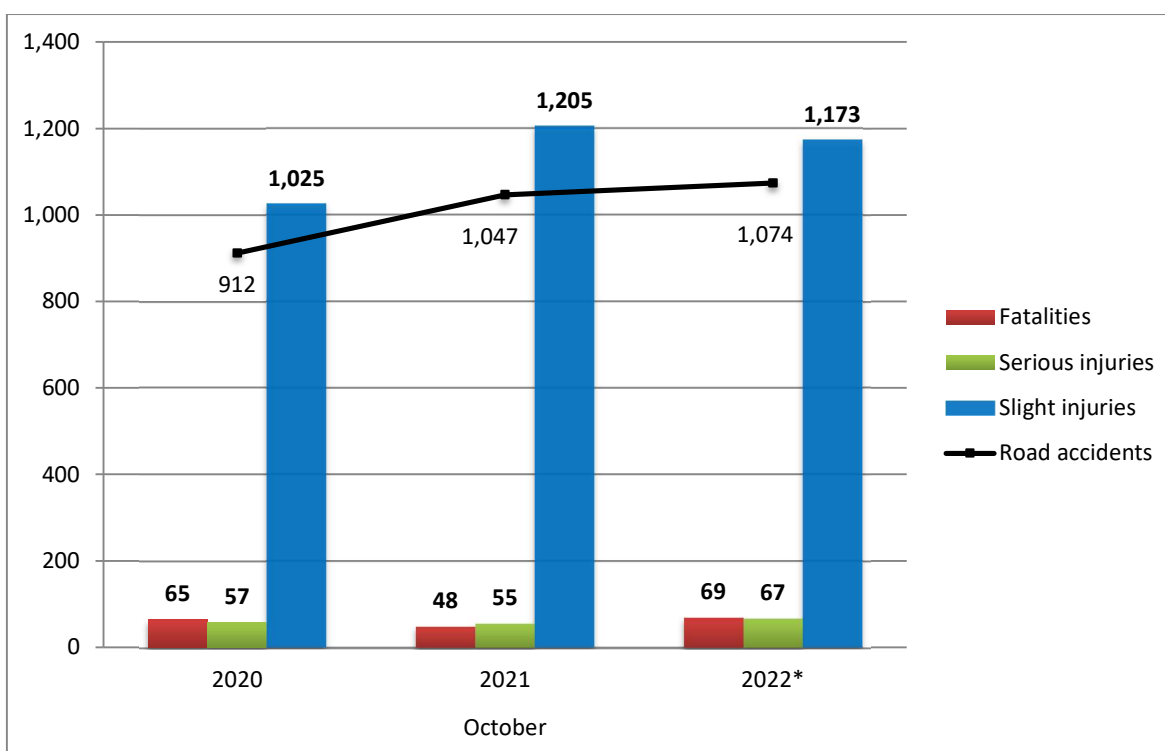
^[1] Data for the reference year is provisional until the finalization of the annual data, which takes place 10 months after the end of the reference year and is published in the corresponding press release of the following year. During these 10 months the provisional data is updated on the basis of the data of the Road Accident Forms of that year which is transmitted to ELSTAT by Police Authorities (see explanatory notes).

Table 1: Road traffic accidents and casualties, October 2020 - 2022*

	October				
	2020	2021	2021/2020 (%)	2022*	2022*/2021 (%)
Road accidents	912	1,047	14.8	1,074	2.6
Fatalities	65	48	-26.2	69	43.8
Total injuries	1,082	1,260	16.5	1,240	-1.6
Serious injuries	57	55	-3.5	67	21.8
Slight injuries	1,025	1,205	17.6	1,173	-2.7

* Provisional data

Graph 2: Road traffic accidents and casualties, October 2020 - 2022*



* Provisional data

Table 2: Road traffic accidents and casualties, by region and department, October 2021 and 2022*

Region and department	Road accidents			Fatalities			Serious injuries			Slight injuries		
	2021	2022*	%	2021	2022*	%	2021	2022*	%	2021	2022*	%
Greece Total	1,047	1,074	2.6	48	69	43.8	55	67	21.8	1,205	1,173	-2.7
Anatoliki Makedonia and Thraki (East Macedonia and Thrace)	30	36	20.0	1	3	200.0	4	6	50.0	32	40	25.0
Drama	11	9	-18.2	0	1		0	1		13	11	
Evros	6	10	66.7	0	0		2	4		6	11	
Kavala	5	8	60.0	1	2		1	1		3	6	
Xanthi	4	3	-25.0	0	0		0	0		5	3	
Rodopi	4	6	50.0	0	0		1	0		5	9	
Kentriki Makedonia (Central Macedonia)	201	173	-13.9	8	10	25.0	7	3	-57.1	241	208	-13.7
Imathia	2	4	100.0	0	1		0	0		2	7	
Thessaloniki	172	148	-14.0	5	5		3	2		207	177	
Kilkis	10	8	-20.0	1	1		1	1		14	8	
Pella	2	1	-50.0	0	1		0	0		4	0	
Pieria	2	4	100.0	0	1		1	0		2	4	
Serres	5	5	0.0	1	1		2	0		2	8	
Chalkidiki	8	3	-62.5	1	0		0	0		10	4	
Dytiki Makedonia (West Macedonia)	4	5	25.0	1	2	100.0	0	1	-	4	4	0.0
Grevena	1	0	-100.0	0	0		0	0		1	0	
Kastoria	0	0	-	0	0		0	0		0	0	
Kozani	3	5	66.7	1	2		0	1		3	4	
Florina	0	0	-	0	0		0	0		0	0	
Ipeiros (Epirus)	8	15	87.5	1	6	500.0	2	0	-100.0	6	15	150.0
Arta	0	2	-	0	2		0	0		0	1	
Thesprotia	1	2	100.0	0	1		0	0		1	1	
Ioannina	2	9	350.0	0	2		1	0		1	12	
Preveza	5	2	-60.0	1	1		1	0		4	1	
Thessalia (Thessaly)	17	22	29.4	3	2	-33.3	1	5	400.0	15	25	66.7
Karditsa	6	6	0.0	0	1		0	0		7	8	
Larissa	4	10	150.0	1	1		0	3		4	10	
Magnissia	5	4	-20.0	2	0		1	2		2	3	
Trikala	2	2	0.0	0	0		0	0		2	4	
Ionian Nisia (Ionian Islands)	11	13	18.2	1	7	600.0	0	0	-	15	13	-13.3
Zakynthos	3	1	-66.7	1	0		0	0		3	3	
Kerkyra	3	4	33.3	0	3		0	0		3	1	
Kefallinia	2	4	100.0	0	1		0	0		6	6	
Lefkada	3	4	33.3	0	3		0	0		3	3	

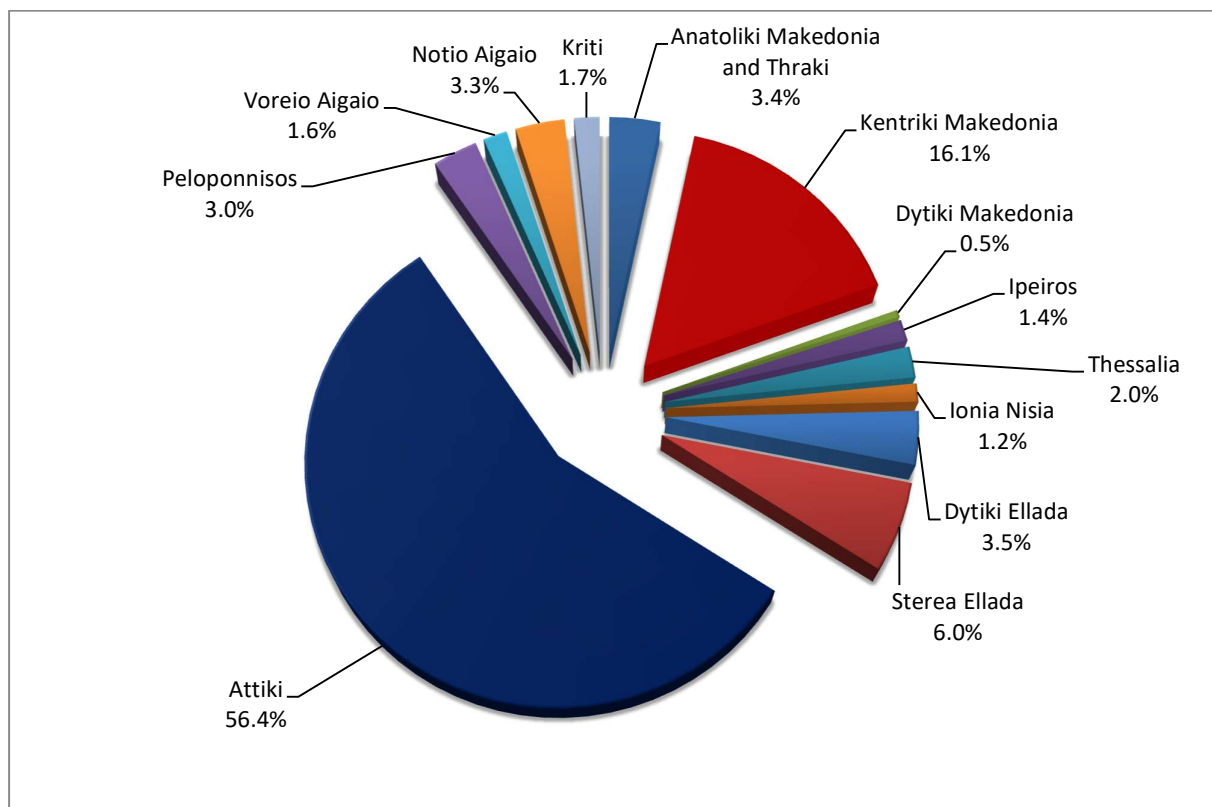
* Provisional data

Table 2: Road traffic accidents and casualties, by region and department, October 2021 and 2022* (Continued)

Region and department	Road accidents			Fatalities			Serious injuries			Slight injuries		
	2021	2022*	%	2021	2022*	%	2021	2022*	%	2021	2022*	%
Dytiki Ellada (West Greece)	45	38	-15.6	7	6	-14.3	3	7	133.3	67	36	-46.3
Etolia & Akarnania	23	21	-8.7	2	3		0	1		34	23	
Achaia	16	13	-18.8	2	1		0	6		20	11	
Ilia	6	4	-33.3	3	2		3	0		13	2	
Stereia Ellada	44	64	45.5	3	5	66.7	6	5	-16.7	56	70	25.0
Viotia	7	8	14.3	1	0		2	0		12	10	
Evia	23	33	43.5	1	2		2	0		25	35	
Evrytania	1	1	0.0	0	0		0	0		1	1	
Fthiotida	11	19	72.7	1	3		2	5		12	21	
Fokida	2	3	50.0	0	0		0	0		6	3	
Attiki (Attica)	596	606	1.7	12	11	-8.3	19	19	0.0	672	667	-0.7
Peloponnisos (Peloponnese)	28	32	14.3	2	6	200.0	3	4	33.3	34	31	-8.8
Argolida	6	12	100.0	1	1		2	3		8	9	
Arkadia	8	5	-37.5	1	1		0	0		9	5	
Korinthia	5	8	60.0	0	2		0	1		5	10	
Lakonia	2	0	-100.0	0	0		1	0		1	0	
Messinia	7	7	0.0	0	2		0	0		11	7	
Voreio Aigaio (North Aegean)	14	17	21.4	0	2	-	1	4	300.0	16	20	25.0
Lesvos	7	10	42.9	0	2		1	2		9	13	
Samos	6	5	-16.7	0	0		0	2		6	5	
Chios	1	2	100.0	0	0		0	0		1	2	
Notio Aigaio (South Aegean)	36	35	-2.8	8	6	-25.0	7	7	0.0	33	31	-6.1
Dodekanissos	21	17	-19.0	2	3		4	6		22	15	
Kyklades	15	18	20.0	6	3		3	1		11	16	
Kriti (Crete)	13	18	38.5	1	3	200.0	2	6	200.0	14	13	-7.1
Iraklio	8	8	0.0	1	1		2	1		9	6	
Lassithi	1	1	0.0	0	0		0	0		1	1	
Rethymno	0	6	-	0	1		0	5		0	2	
Chania	4	3	-25.0	0	1		0	0		4	4	

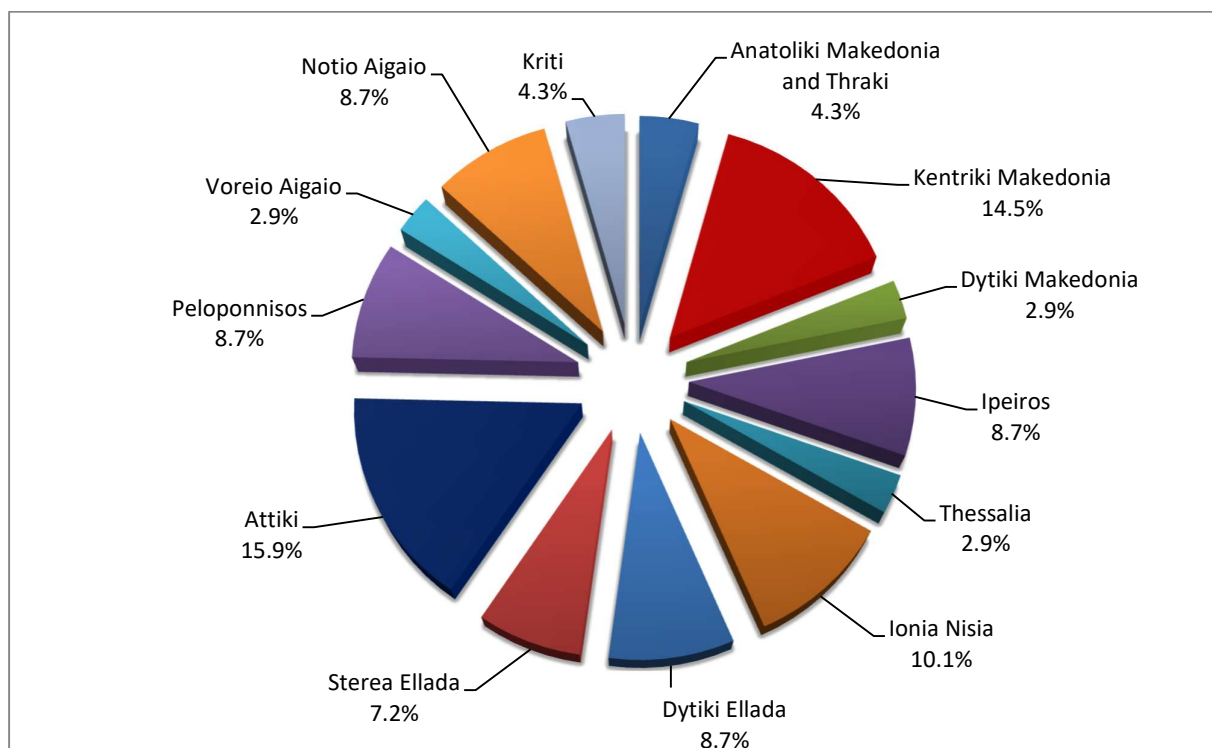
* Provisional data

Graph 3: Road traffic accidents by region, October 2022 *



* Provisional data

Graph 4: Fatalities by region, October 2022 *



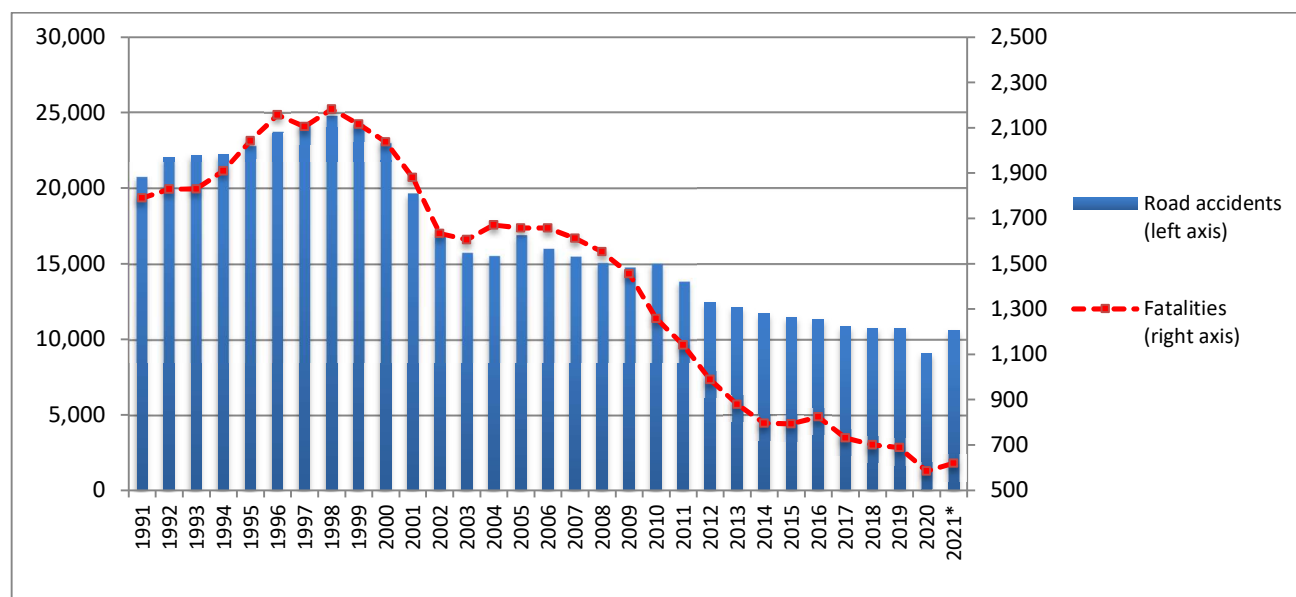
* Provisional data

Table 3: Road traffic accidents and casualties for the period January - October 2020, 2021 and 2022*

	2020		2021		2022 *
	January - October	Total year	January - October	Total year*	January - October
Road Accidents	7,883	9,083	8,749	10,614	9,384
Annual Change (%)			11.0	16.9	7.3
Fatalities	503	584	515	619	533
Annual Change (%)			2.4	6.0	3.5
Serious injuries	456	518	531	603	527
Annual Change (%)			16.4	16.4	-0.8
Slight injuries	9,001	10,300	9,833	11,890	10,497
Annual Change (%)			9.2	15.4	6.8

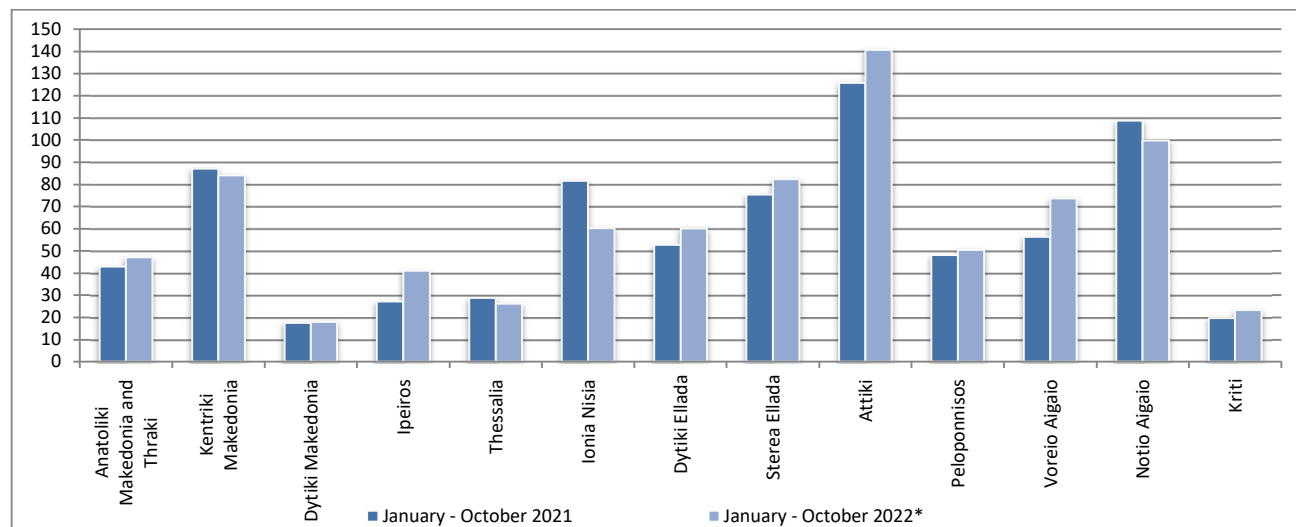
* Provisional data

Graph 5: Total Road traffic accidents and fatalities, 1991-2021*



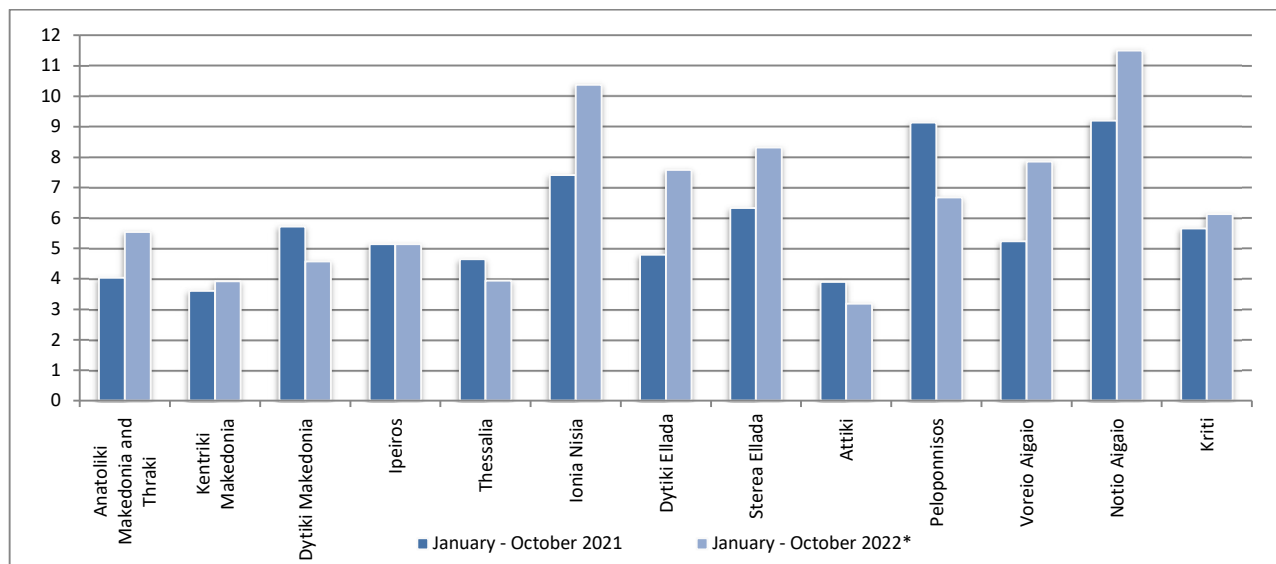
* Provisional data for the period November 2021 – December 2021

Graph 6: Road traffic accidents per 100,000 inhabitants for the period January - October 2021 and 2022*

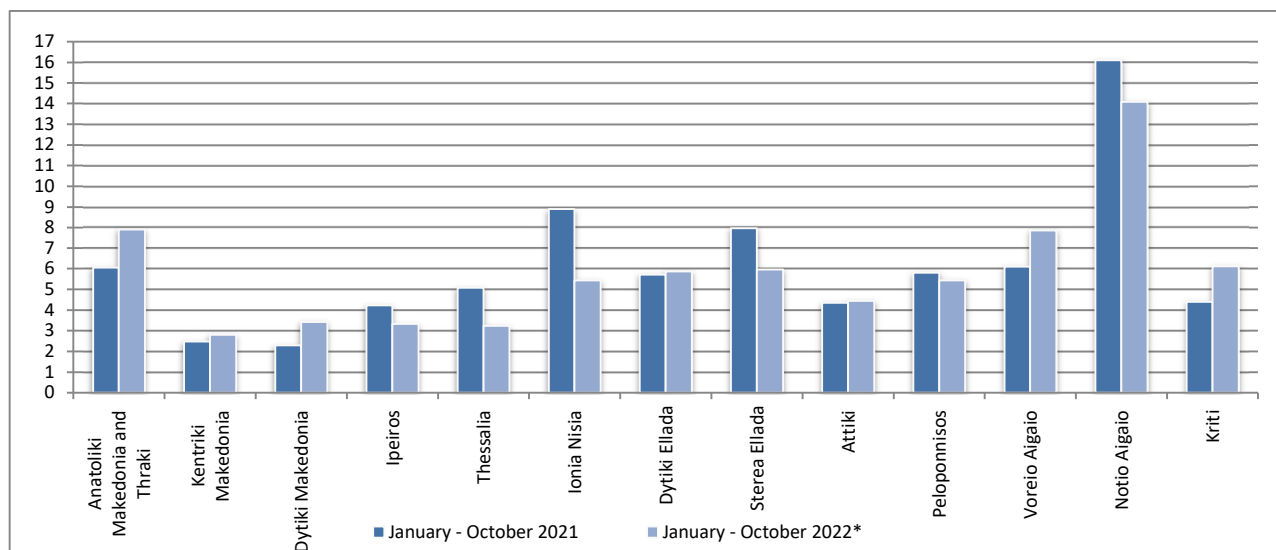


* Provisional data

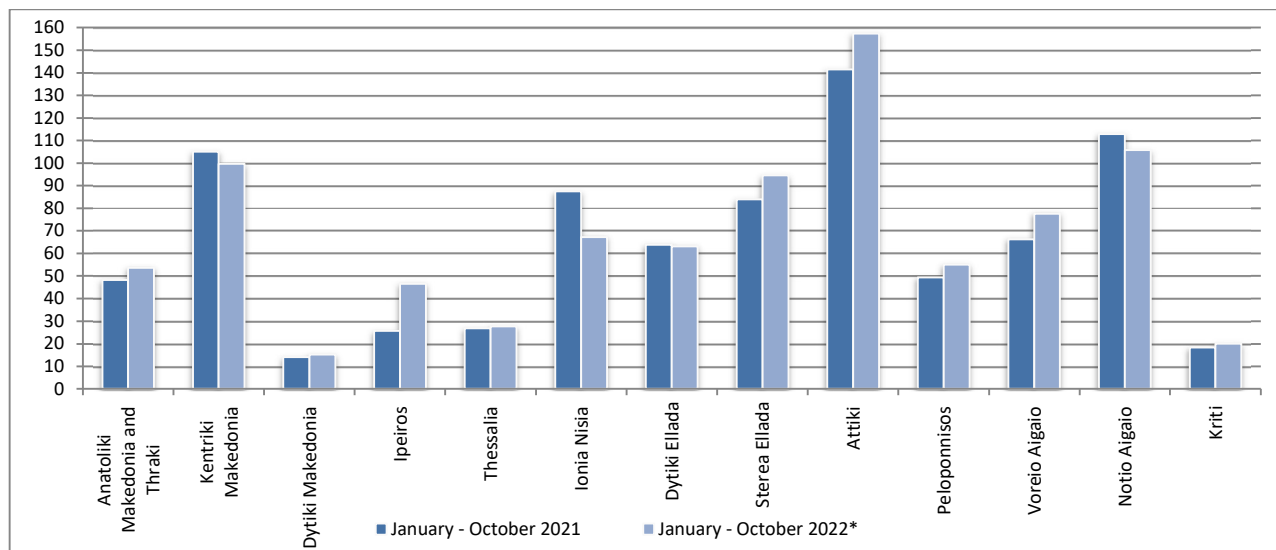
Graph 7: Fatalities per 100,000 inhabitants for the period January - October 2021 and 2022*



Graph 8: Serious injuries per 100,000 inhabitants for the period January - October 2021 and 2022*



Graph 9: Slight injuries per 100,000 inhabitants for the period January - October 2021 and 2022*



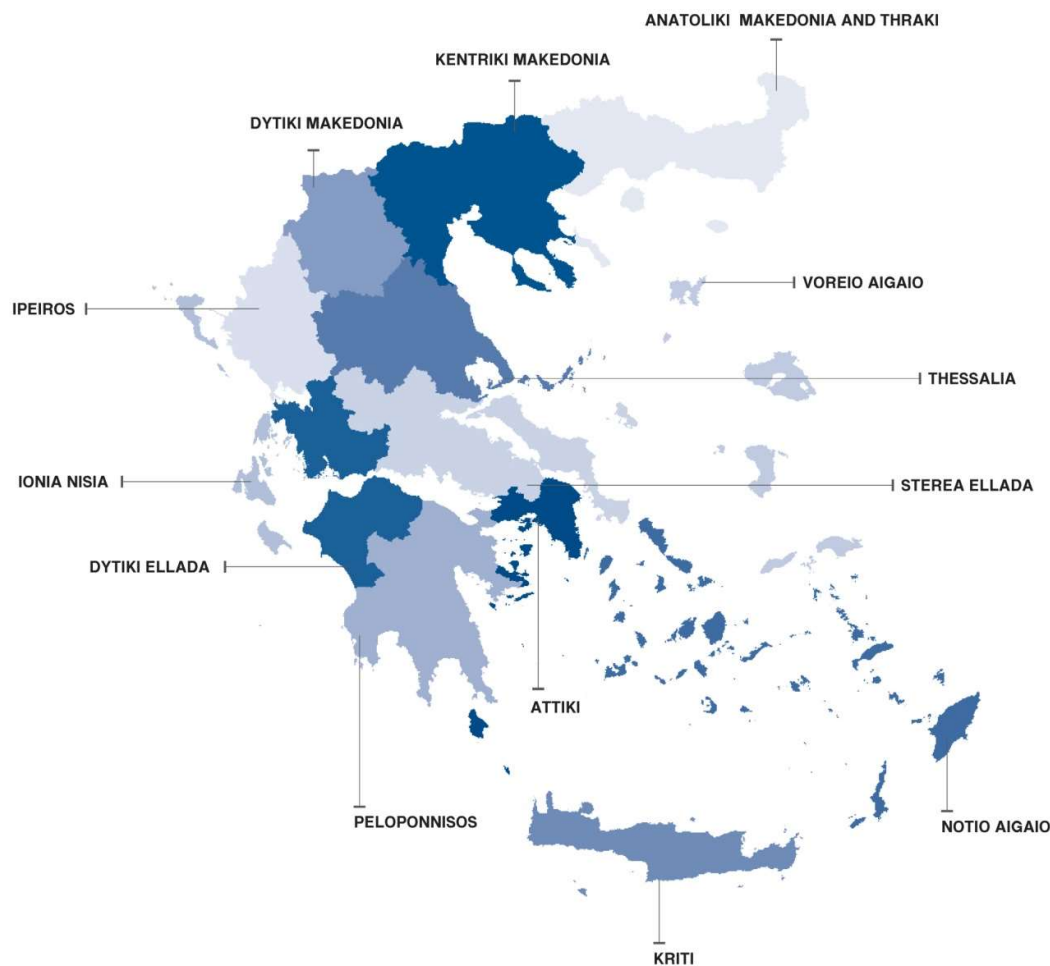
* Provisional data

EXPLANATORY NOTES

Survey on Road Traffic Accidents The Survey on Road Traffic Accidents is conducted on a monthly basis and it records, for each region (see map) and department of Greece and for each month separately, the number of accidents resulting in death or injury, as well as the number of persons injured by categories (drivers, passengers, pedestrians).

On a yearly basis, road traffic accidents are further analyzed. The competent agencies for filling in/collecting the forms on road accidents are the local Police Authorities and the local Port Authorities of Greece.

The lower level of analysis for the place where an injury road accident occurred is the settlement. Data are collected on a monthly basis. The main variables are the following: place of accident, kind of road, casualties, conditions of road surface and type of road.



Legal basis The Survey on Road Traffic Accidents is governed by Council Decision 93/704 of the European Community.

Reference period Monthly.

Availability of data Provisional data are available 2 months after the reference month.
Final data are available 10 months after the reference year.

Definitions **Road accident** (injury accident): Any accident involving at least one road motor vehicle in motion on a public road or square to which the public has access (excluding yards, industrial sites or vehicle depot of public transport enterprises), resulting in at least one injured or killed person. Accidents with only material damages are not included.

Fatality (Death): Any person killed immediately or dying within 30 days as a result of an injury accident (This national definition applies since 01.01.1996)

Person injured: Any person who sustained an injury as result of an injury accident, and who normally needs medical treatment.

Serious injury: Any person who sustained an injury as result of an injury accident, such as brain damages, mutilation, multiple injuries, which may result in lack of awareness or which are life-threatening.

Slight injury: Any person injured who sustained minor and not life-threatening injuries.

Vehicle: Include motor vehicles, trolleybuses, motorcycles, bicycles, motorbikes, agricultural and road making machines, animal and hand-drawn vehicles. Railway vehicles are excluded, unless the road accident involves at least one of the aforementioned types of vehicles and therefore, railway vehicles are considered vehicles.

Methodology The forms of the survey are filled in by the local Police Authorities and the local Port Authorities as well.

References More information about Road Traffic Accidents is available on ELSTAT's website and more specifically at the link: <https://www.statistics.gr/en/statistics/-/publication/SDT03/->.