



PRESS RELEASE

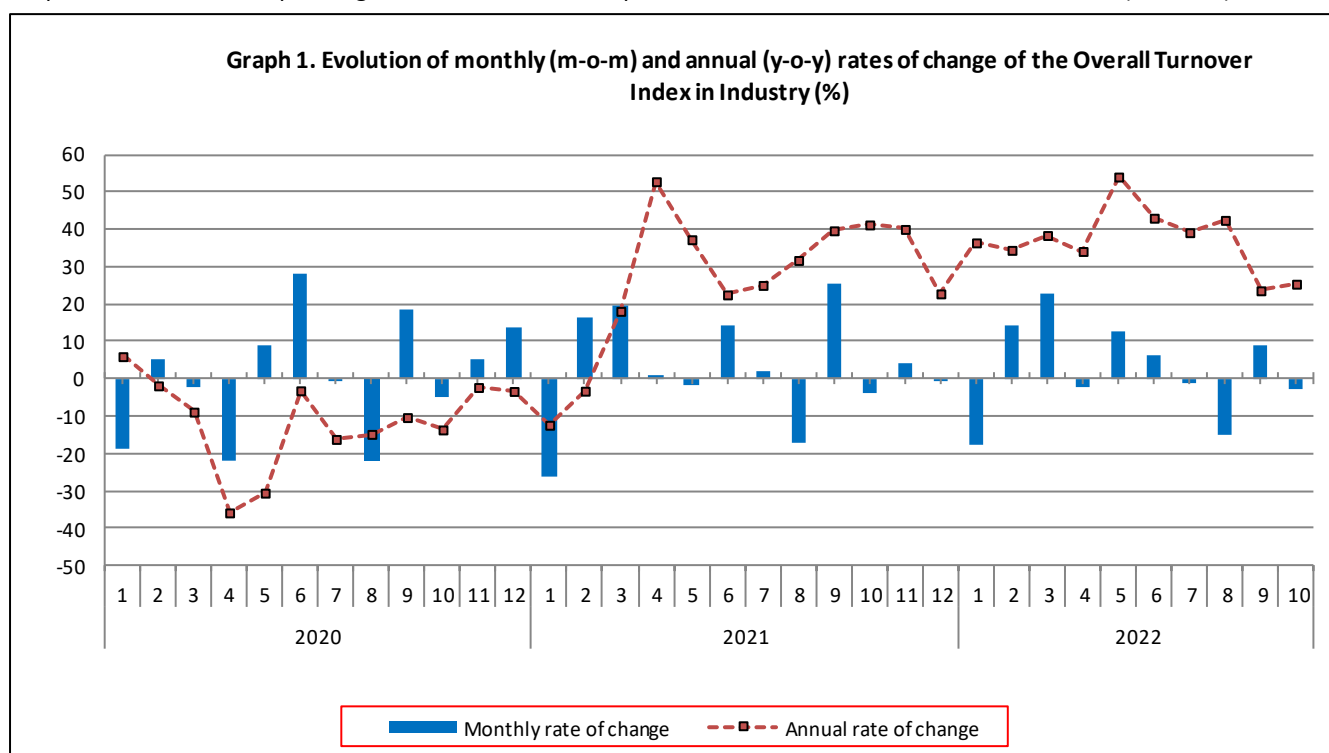
TURNOVER INDEX IN INDUSTRY: October 2022, y-o-y increase of 25.4%

The Hellenic Statistical Authority announces the Turnover Index in Industry with base year 2015=100.0 for October 2022, the evolution of which on the basis of provisional data, is as follows:

The Overall Turnover Index in Industry (both Domestic and Non-Domestic Market) in October 2022 recorded an increase of 25.4% compared with the corresponding index of October 2021. The Overall Turnover Index in Industry in October 2021 increased by 41.3% compared with the corresponding index in October 2020 (Table 1).

The Overall Turnover Index in Industry in October 2022, compared with September 2022, recorded a decrease of 2.6% (Table 6).

The average Overall Turnover Index in Industry for the 12-month period from November 2021 to October 2022 increased by 35.9%, compared with the corresponding index of the 12-month period from November 2020 to October 2021. The average Overall Turnover Index in Industry for the 12-month period from November 2020 to October 2021 increased by 19.3% compared with the corresponding index of the 12-month period from November 2019 to October 2020 (Table 13).



Information on methodological issues:

Division of Business Statistics
Section of Manufacture-Construction Indices and Industrial Products
Head of the Section : Diamantaki Aikaterini
Tel: +30 213 135 2056
E-mail: a.diamantaki@statistics.gr

Information on data provision:

Tel: +30 213 135 2022, 2308, 2310
E-mail: data.dissem@statistics.gr

Evolution of the Overall Turnover Index in Industry in October 2022

I. Annual changes of the Overall Turnover Index in Industry: October 2022/October 2021

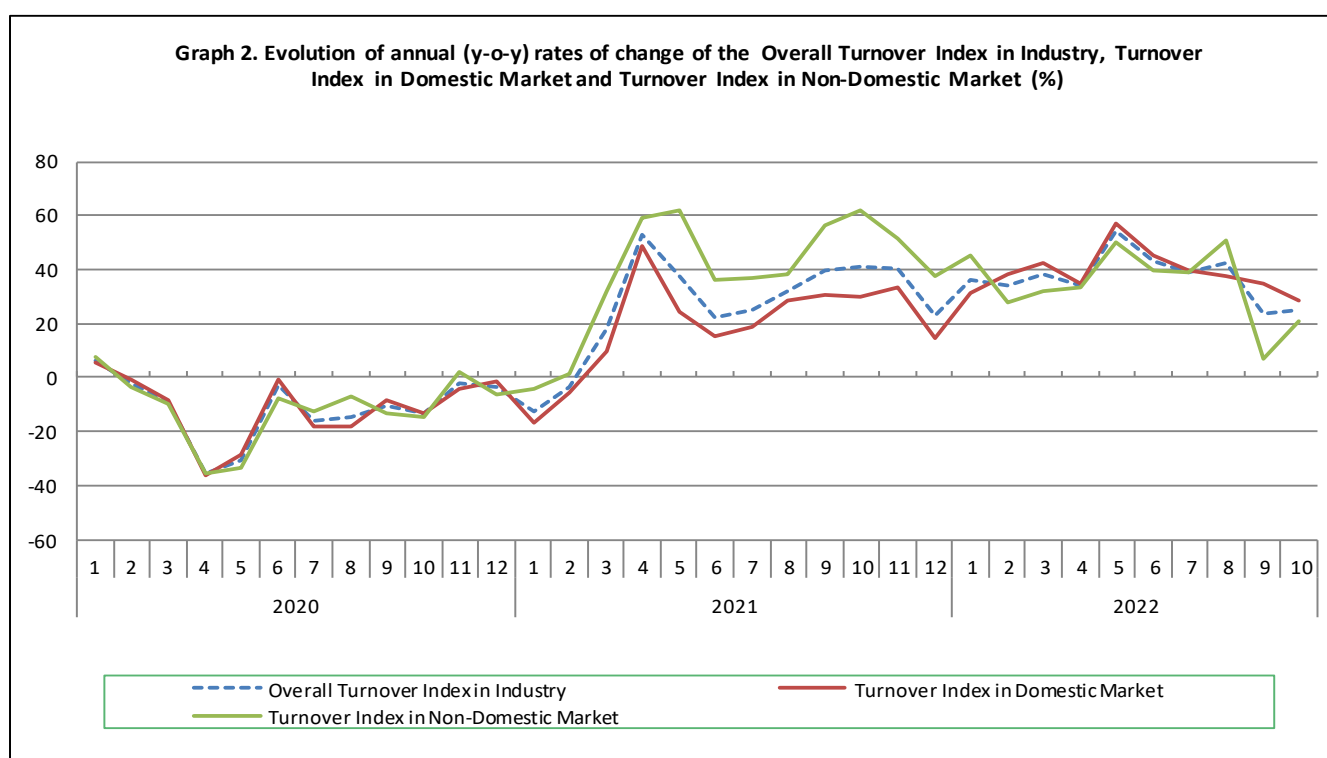
The 25.4% increase in the Overall Turnover Index in Industry in October 2022, compared with the corresponding index in October 2021, was due to the following:

1. Changes in the sub-indices of the industrial sections (Table 1):

- The Turnover Index in Manufacturing increased by 25.7%. The increase was mainly the result of the annual changes of the sub-indices in the following 2-digit divisions: coke and refined petroleum products, tobacco products, chemicals and chemical products, food.
- The Turnover Index in Mining and quarrying decreased by 0.8%. The decrease was the result of the annual change of the sub-index in the following 2-digit division: other mining and quarrying products.

2. Changes in the sub-indices in Domestic and Non-Domestic Markets:

- The Turnover Index in Industry in Domestic Market increased by 28.5% (Table 2).
- The Turnover Index in Industry in Non-Domestic Market increased by 20.7% (Table 3).



II. Annual changes of the Turnover Index in Industry in Domestic Market: October 2022/October 2021

The 28.5% increase of the Turnover Index in Industry in Domestic Market in October 2022, compared with October 2021, is due to the annual changes in the sub-indices of the following industrial sections (Table 2):

- The Turnover Index in Mining and quarrying increased by 39.2%. The increase was mainly the result of the annual changes of the sub-indices in the following 2-digit divisions: mining of coal and lignite - extraction of crude petroleum and natural gas - mining support service activities, other mining and quarrying products.
- The Turnover Index in Manufacturing increased by 28.5%. The increase was mainly the result of the annual changes of the sub-indices in the following 2-digit divisions: coke and refined petroleum products, electrical equipment, chemicals and chemical products, basic pharmaceutical products and pharmaceutical preparations.

III. Annual changes of the Turnover Index in Industry in Non-Domestic Market: October 2022/October 2021

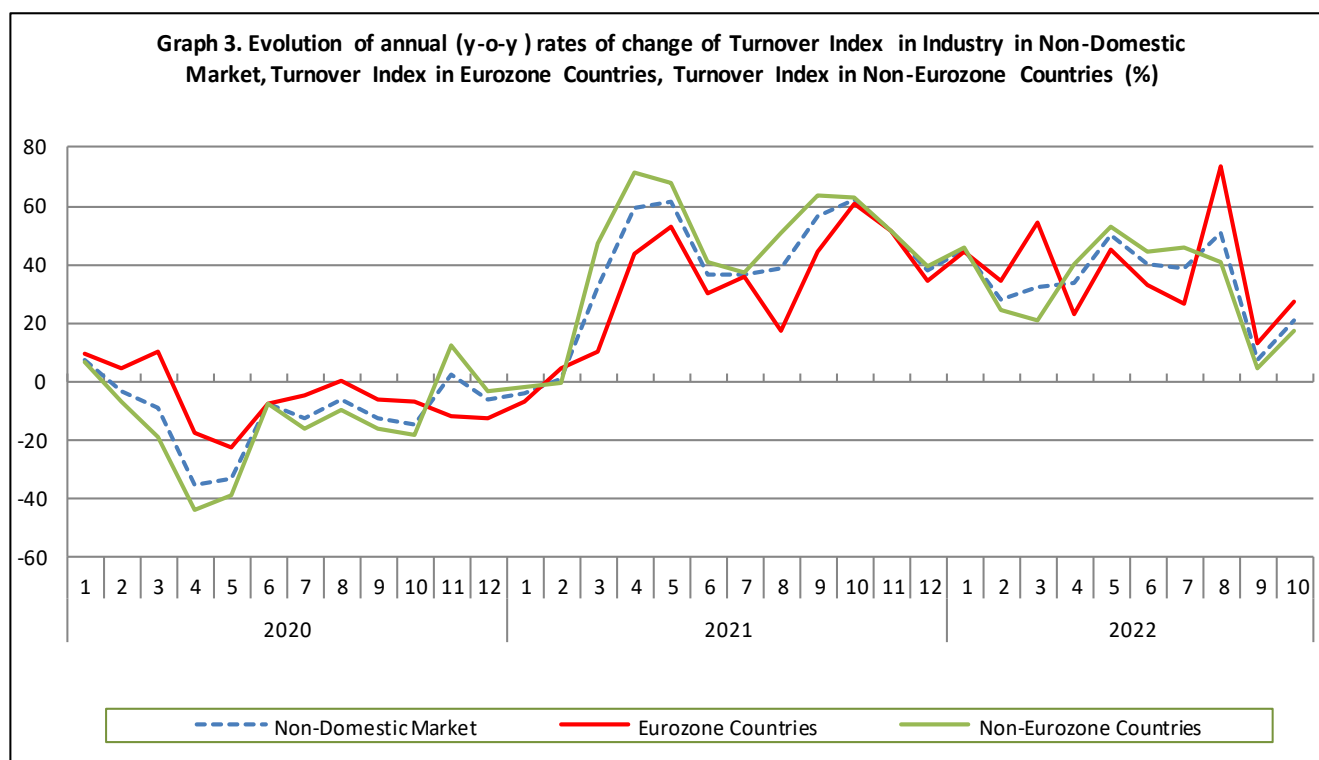
The 20.7% increase of the Turnover Index in Industry in Non-Domestic Market in October 2022, compared with October 2021, was due to the following:

1. Changes in the sub-indices of the industrial sections (Table 3):

- The Turnover Index in Manufacturing increased by 21.4%. The increase was mainly the result of the annual changes of the sub-indices in the following 2-digit divisions: other non-metallic mineral products, chemicals and chemical products, coke and refined petroleum products, food.
- The Turnover Index in Mining and quarrying decreased by 29.9%. The decrease was the result of the annual change of the sub-index in the following 2-digit division: other mining and quarrying products.

2. Changes in the sub-indices in Eurozone and Non-Eurozone countries:

- The Turnover Index in Industry in Eurozone countries increased by 26.8% (Table 4).
- The Turnover Index in Industry in Non-Eurozone countries increased by 17.3% (Table 5).



IV. Monthly changes of the Overall Turnover Index in Industry: October 2022/September 2022

The 2.6% decrease of the Overall Turnover Index in Industry in October 2022, compared with the corresponding index in September 2022, was due to the following:

1. Changes in the sub-indices of industrial sections (Table 6):

- The Turnover Index in Mining and quarrying decreased by 29.5%.
- The Turnover Index in Manufacturing decreased by 2.3%.

2. Changes in the sub-indices in Domestic and Non-Domestic Market:

- The Turnover Index in Industry in Domestic Market decreased by 8.5% (Table 7).
- The Turnover Index in Industry in Non-Domestic Market increased by 8.7% (Table 8).

Table 1. Annual rates of change of the Turnover Index in Industry: Total Market
Base year: 2015=100.0

Code		Division	Weights	October			Rate of change (%)	
				2022*	2021	2020	2022/2021	2021/2020
OVERALL INDEX				174.34	139.01	98.38	25.4	41.3
B	MINING AND QUARRYING		100.00	95.39	96.17	107.86	-0.8	-10.8
05-06-09	Mining of coal and lignite - Extraction of crude petroleum and natural gas - Mining support service activities		21.19	37.68	12.56	14.53	200.1	-13.6
07	Mining of metal ores		17.56	144.35	134.30	197.21	7.5	-31.9
08	Other mining and quarrying products		61.25	101.32	114.17	114.52	-11.3	-0.3
C	MANUFACTURING		100.00	175.41	139.59	98.25	25.7	42.1
10	Food		23.39	135.54	118.04	108.39	14.8	8.9
11	Beverages		3.57	106.10	91.99	90.08	15.3	2.1
12	Tobacco products		1.19	201.77	137.79	132.69	46.4	3.8
13	Textiles		1.28	124.26	126.97	107.28	-2.1	18.3
14	Wearing apparel		1.80	93.22	100.51	77.48	-7.3	29.7
15	Leather and related products		0.34	101.00	84.33	63.31	19.8	33.2
16	Wood and products of wood and cork, except furniture		0.72	135.42	126.22	114.01	7.3	10.7
17	Paper and paper products		2.44	153.89	119.71	113.92	28.6	5.1
18	Printing and reproduction of recorded products		1.17	109.32	108.49	90.19	0.8	20.3
19	Coke and refined petroleum products		28.73	220.53	146.52	54.36	50.5	169.5
20	Chemicals and chemical products		4.43	208.81	151.78	120.25	37.6	26.2
21	Basic pharmaceutical products and pharmaceutical preparations		3.67	247.47	204.75	192.82	20.9	6.2
22	Rubber and plastic products		3.47	149.54	142.82	111.88	4.7	27.6
23	Other non-metallic mineral products		3.31	161.66	125.62	119.98	28.7	4.7
24	Basic metals		7.19	203.46	191.32	126.86	6.3	50.8
25	Fabricated metal products, except machinery and equipment		4.51	137.46	132.14	105.38	4.0	25.4
26	Computers, electronic and optical products		0.78	263.45	185.68	159.93	41.9	16.1
27	Electrical equipment		2.65	225.65	191.12	142.56	18.1	34.1
28	Machinery and equipment n.e.c.		1.56	127.34	143.40	121.64	-11.2	17.9
29	Motor vehicles, trailers and semi-trailers		0.23	222.28	125.46	105.24	77.2	19.2
30	Other transport equipment		0.52	82.43	100.03	76.97	-17.6	30.0
31	Furniture		0.97	147.30	135.61	119.24	8.6	13.7
32	Other manufacturing		0.66	130.30	121.54	93.33	7.2	30.2
33	Repair and installation of machinery and equipment		1.42	112.45	98.33	97.42	14.4	0.9
MAIN INDUSTRIAL GROUPINGS								
1	Energy		28.57	219.20	145.51	54.08	50.6	169.1
2	Intermediate goods		28.29	177.05	153.38	120.35	15.4	27.4
3	Capital goods		7.00	139.02	129.80	111.91	7.1	16.0
4	Consumer Durables		1.86	165.75	127.25	103.79	30.3	22.6
5	Consumer Non-Durables		34.28	142.41	124.25	114.12	14.6	8.9

* Provisional data

Note: The indices and the percentage changes are rounded up to two and one decimal digits, respectively, when published.

Table 2. Annual rates of change of the Turnover Index in Industry: Domestic Market

Base year: 2015=100.0

Code		Division	Weights	October			Rate of change (%)	
				2022*	2021	2020	2022/2021	2021/2020
OVERALL INDEX				162.19	126.17	96.83	28.5	30.3
B	MINING AND QUARRYING		100.00	99.49	71.47	74.92	39.2	-4.6
05-06-09	Mining of coal and lignite - Extraction of crude petroleum and natural gas - Mining support service activities		31.66	44.53	14.84	16.87	200.0	-12.0
07	Mining of metal ores		12.83	92.43	81.95	109.11	12.8	-24.9
08	Other mining and quarrying products		55.50	132.47	101.35	100.13	30.7	1.2
C	MANUFACTURING		100.00	162.91	126.80	97.09	28.5	30.6
10	Food		28.50	127.35	112.45	102.47	13.3	9.7
11	Beverages		4.86	103.02	91.01	89.70	13.2	1.5
12	Tobacco products		0.51	230.11	202.54	185.30	13.6	9.3
13	Textiles		1.11	119.97	123.08	99.19	-2.5	24.1
14	Wearing apparel		1.77	97.89	98.47	75.03	-0.6	31.2
15	Leather and related products		0.41	88.99	84.85	70.64	4.9	20.1
16	Wood and products of wood and cork, except furniture		0.96	129.56	118.24	108.99	9.6	8.5
17	Paper and paper products		3.12	146.72	113.43	110.27	29.4	2.9
18	Printing and reproduction of recorded products		1.63	96.01	87.37	77.52	9.9	12.7
19	Coke and refined petroleum products		24.90	204.16	118.74	54.10	71.9	119.5
20	Chemicals and chemical products		4.90	208.98	151.43	117.07	38.0	29.4
21	Basic pharmaceutical products and pharmaceutical preparations		3.85	220.33	175.30	167.14	25.7	4.9
22	Rubber and plastic products		3.31	146.07	135.10	107.69	8.1	25.5
23	Other non-metallic mineral products		3.31	171.52	138.31	127.31	24.0	8.6
24	Basic metals		3.49	249.71	236.89	144.88	5.4	63.5
25	Fabricated metal products, except machinery and equipment		4.25	161.20	154.87	120.80	4.1	28.2
26	Computers, electronic and optical products		0.40	144.73	108.21	105.97	33.7	2.1
27	Electrical equipment		2.24	240.09	171.11	141.83	40.3	20.6
28	Machinery and equipment n.e.c.		1.46	124.99	157.30	132.55	-20.5	18.7
29	Motor vehicles, trailers and semi-trailers		0.27	247.99	133.20	99.45	86.2	33.9
30	Other transport equipment		0.58	57.69	73.86	64.98	-21.9	13.7
31	Furniture		1.35	130.82	125.04	112.50	4.6	11.1
32	Other manufacturing		0.88	126.95	119.75	89.44	6.0	33.9
33	Repair and installation of machinery and equipment		1.92	118.62	103.44	103.34	14.7	0.1
MAIN INDUSTRIAL GROUPINGS								
1	Energy		24.89	202.61	117.68	53.76	72.2	118.9
2	Intermediate goods		25.73	180.50	149.74	119.07	20.5	25.8
3	Capital goods		7.19	143.02	138.92	118.30	3.0	17.4
4	Consumer Durables		2.31	134.37	111.95	95.51	20.0	17.2
5	Consumer Non-Durables		39.88	130.22	114.79	105.58	13.4	8.7

* Provisional data

Note: The indices and the percentage changes are rounded up to two and one decimal digits, respectively, when published.

Table 3. Annual rates of change of the Turnover Index in Industry: Non-Domestic Market

Base year: 2015=100.0

Code	Division	Weights	October			Rate of change (%)	
			2022*	2021	2020	2022/2021	2021/2020
OVERALL INDEX			198.29	164.29	101.44	20.7	62.0
B	MINING AND QUARRYING	100.00	90.04	128.40	150.83	-29.9	-14.9
05-06-09	Mining of coal and lignite - Extraction of crude petroleum and natural gas - Mining support service activities	7.53	0.07	0.00	1.67	-	-100.0
07	Mining of metal ores	23.74	180.99	171.25	259.38	5.7	-34.0
08	Other mining and quarrying products	68.74	68.49	127.67	129.69	-46.4	-1.6
C	MANUFACTURING	100.00	200.19	164.91	100.57	21.4	64.0
10	Food	13.27	170.42	141.83	133.61	20.2	6.2
11	Beverages	1.01	135.52	101.40	93.71	33.7	8.2
12	Tobacco products	2.53	190.35	111.68	111.48	70.4	0.2
13	Textiles	1.61	130.16	132.29	118.40	-1.6	11.7
14	Wearing apparel	1.86	84.42	104.37	82.09	-19.1	27.2
15	Leather and related products	0.19	152.61	82.06	31.85	86.0	157.7
16	Wood and products of wood and cork, except furniture	0.24	181.94	189.52	153.86	-4.0	23.2
17	Paper and paper products	1.11	193.79	154.65	134.22	25.3	15.2
18	Printing and reproduction of recorded products	0.26	274.98	371.52	247.91	-26.0	49.9
19	Coke and refined petroleum products	36.32	242.78	184.26	54.71	31.8	236.8
20	Chemicals and chemical products	3.50	208.31	152.72	129.06	36.4	18.3
21	Basic pharmaceutical products and pharmaceutical preparations	3.30	310.17	272.80	252.16	13.7	8.2
22	Rubber and plastic products	3.79	155.56	156.19	119.16	-0.4	31.1
23	Other non-metallic mineral products	3.31	142.12	100.46	105.46	41.5	-4.7
24	Basic metals	14.54	181.47	169.66	118.30	7.0	43.4
25	Fabricated metal products, except machinery and equipment	5.03	97.68	94.06	79.55	3.8	18.2
26	Computers, electronic and optical products	1.52	325.23	225.99	188.01	43.9	20.2
27	Electrical equipment	3.44	206.99	216.97	143.49	-4.6	51.2
28	Machinery and equipment n.e.c.	1.76	131.22	120.56	103.72	8.8	16.2
29	Motor vehicles, trailers and semi-trailers	0.14	122.15	95.31	127.81	28.2	-25.4
30	Other transport equipment	0.40	152.95	174.61	111.12	-12.4	57.1
31	Furniture	0.21	357.23	270.16	205.06	32.2	31.7
32	Other manufacturing	0.22	156.23	135.39	123.48	15.4	9.7
33	Repair and installation of machinery and equipment	0.43	58.34	53.42	45.39	9.2	17.7
MAIN INDUSTRIAL GROUPINGS							
1	Energy	35.82	241.90	183.59	54.52	31.8	236.7
2	Intermediate goods	33.33	171.80	158.91	122.30	8.1	29.9
3	Capital goods	6.62	130.45	110.29	98.24	18.3	12.3
4	Consumer Durables	0.98	311.84	198.48	142.33	57.1	39.4
5	Consumer Non-Durables	23.25	183.61	156.18	143.00	17.6	9.2

* Provisional data

Note: The indices and the percentage changes are rounded up to two and one decimal digits, respectively, when published.

Table 4. Annual rates of change of the Turnover Index in Industry: Eurozone Countries

Base year: 2015=100.0

CodeSections and main groupings		October			Rate of change (%)	
		2022*	2021	2020	2022/2021	2021/2020
OVERALL INDEX		216.50	170.73	106.35	26.8	60.5
INDUSTRIAL SECTIONS						
B	MINING AND QUARRYING	31.61	148.32	94.42	-78.7	57.1
C	MANUFACTURING	220.20	171.18	106.59	28.6	60.6
MAIN INDUSTRIAL GROUPINGS						
1	Energy	319.37	180.25	26.52	77.2	579.7
2	Intermediate goods	183.82	174.02	127.14	5.6	36.9
3	Capital goods	129.70	133.47	114.71	-2.8	16.4
4	Consumer Durables	396.51	326.68	193.21	21.4	69.1
5	Consumer Non-Durables	188.52	160.30	134.04	17.6	19.6

* Provisional data

Table 5. Annual rates of change of the Turnover Index in Industry: Non-Eurozone Countries

Base year: 2015=100.0

CodeSections and main groupings		October			Rate of change (%)	
		2022*	2021	2020	2022/2021	2021/2020
OVERALL INDEX		188.61	160.86	98.82	17.3	62.8
INDUSTRIAL SECTIONS						
B	MINING AND QUARRYING	128.40	115.33	187.87	11.3	-38.6
C	MANUFACTURING	189.59	161.60	97.38	17.3	65.9
MAIN INDUSTRIAL GROUPINGS						
1	Energy	219.59	184.56	62.59	19.0	194.9
2	Intermediate goods	163.97	149.06	119.14	10.0	25.1
3	Capital goods	130.70	102.43	92.66	27.6	10.5
4	Consumer Durables	253.36	109.96	107.20	130.4	2.6
5	Consumer Non-Durables	178.83	152.18	151.72	17.5	0.3

* Provisional data

Note: The indices and the percentage changes are rounded up to two and one decimal digits, respectively, when published.

Table 6. Monthly rate of change of the Turnover Index in Industry: Total Market

Base year: 2015=100.0

Code	Sections and main groupings	October 2022*	September 2022**	Rate of change (%) Oct. 2022 / Sep. 2022
OVERALL INDEX		174.34	179.01	-2.6
INDUSTRIAL SECTIONS				
B	MINING AND QUARRYING	95.39	135.25	-29.5
C	MANUFACTURING	175.41	179.60	-2.3
MAIN INDUSTRIAL GROUPINGS				
1	Energy	219.20	198.53	10.4
2	Intermediate goods	177.05	197.45	-10.3
3	Capital goods	139.02	148.47	-6.4
4	Consumer Durables	165.75	162.36	2.1
5	Consumer Non-Durables	142.41	154.67	-7.9

Table 7. Monthly rate of change of the Turnover Index in Industry: Domestic Market

Base year: 2015=100.0

Code	Sections and main groupings	October 2022*	September 2022**	Rate of change (%) Oct. 2022 / Sep. 2022
OVERALL INDEX		162.19	177.26	-8.5
INDUSTRIAL SECTIONS				
B	MINING AND QUARRYING	99.49	100.80	-1.3
C	MANUFACTURING	162.91	178.14	-8.5
MAIN INDUSTRIAL GROUPINGS				
1	Energy	202.61	221.53	-8.5
2	Intermediate goods	180.50	199.58	-9.6
3	Capital goods	143.02	149.02	-4.0
4	Consumer Durables	134.37	149.14	-9.9
5	Consumer Non-Durables	130.22	141.96	-8.3

Table 8. Monthly rate of change of the Turnover Index in Industry: Non-Domestic Market

Base year: 2015=100.0

Code	Sections and main groupings	October 2022*	September 2022**	Rate of change (%) Oct. 2022 / Sep. 2022
OVERALL INDEX		198.29	182.46	8.7
INDUSTRIAL SECTIONS				
B	MINING AND QUARRYING	90.04	180.21	-50.0
C	MANUFACTURING	200.19	182.50	9.7
MAIN INDUSTRIAL GROUPINGS				
1	Energy	241.90	167.04	44.8
2	Intermediate goods	171.80	194.22	-11.5
3	Capital goods	130.45	147.28	-11.4
4	Consumer Durables	311.84	223.89	39.3
5	Consumer Non-Durables	183.61	197.62	-7.1

* Provisional data ** Revised data

Note: The indices and the percentage changes are rounded up to two and one decimal digits, respectively, when published.

Table 9. Monthly rate of change of the Turnover Index in Industry: Eurozone Countries

Base year: 2015=100.0

Code	Sections and main groupings	October 2022*	September 2022**	Rate of change (%) Oct. 2022 / Sep. 2022
OVERALL INDEX		216.50	183.48	18.0
INDUSTRIAL SECTIONS				
B	MINING AND QUARRYING	31.61	188.45	-83.2
C	MANUFACTURING	220.20	183.38	20.1
MAIN INDUSTRIAL GROUPINGS				
1	Energy	319.37	133.40	139.4
2	Intermediate goods	183.82	207.08	-11.2
3	Capital goods	129.70	158.79	-18.3
4	Consumer Durables	396.51	276.61	43.3
5	Consumer Non-Durables	188.52	191.77	-1.7

* Provisional data ** Revised data

Table 10. Monthly rate of change of the Turnover Index in Industry: Non-Eurozone Countries

Base year: 2015=100.0

Code	Sections and main groupings	October 2022*	September 2022**	Rate of change (%) Oct. 2022 / Sep. 2022
OVERALL INDEX		188.61	181.91	3.7
INDUSTRIAL SECTIONS				
B	MINING AND QUARRYING	128.40	174.80	-26.5
C	MANUFACTURING	189.59	182.03	4.2
MAIN INDUSTRIAL GROUPINGS				
1	Energy	219.59	176.73	24.2
2	Intermediate goods	163.97	185.83	-11.8
3	Capital goods	130.70	143.38	-8.8
4	Consumer Durables	253.36	187.48	35.1
5	Consumer Non-Durables	178.83	203.32	-12.0

* Provisional data ** Revised data

Note: The indices and the percentage changes are rounded up to two and one decimal digits, respectively, when published.

Table 11. Evolution of the Turnover Index in Industry (y-o-y changes): Total Market

Base year: 2015=100.0

Year and month		Overall Index (Total Market)		Turnover Index in Industry in Domestic Market		Turnover Index in Industry in Non-Domestic Market	
		Index	Annual rate of change (%)	Index	Annual rate of change (%)	Index	Annual rate of change (%)
2021:	10	139.01	41.3	126.17	30.3	164.29	62.0
	11	145.11	40.1	133.06	33.6	168.83	51.5
	12	144.88	22.8	133.09	14.9	168.12	37.5
2022*:	1	118.88	36.5	105.79	31.0	144.68	45.2
	2	136.05	34.5	128.64	38.6	150.66	28.1
	3	167.24	38.5	152.82	42.8	195.65	32.3
	4	163.65	34.2	149.70	34.6	191.13	33.6
	5	184.24	54.1	166.34	57.1	219.50	49.9
	6	195.48	43.1	185.47	45.0	215.20	39.9
	7	193.51	39.2	179.26	39.6	221.59	38.7
	8	164.47	42.5	153.34	37.8	186.39	50.8
	9	179.01	23.7	177.26	34.6	182.46	7.0
	10	174.34	25.4	162.19	28.5	198.29	20.7

*Provisional data

Table 12. Evolution of the Turnover Index in Industry (y-o-y changes): Non-Domestic Market

Base year: 2015=100.0

Year and month		Overall Index (Non-Domestic Market)		Turnover Index in Industry in Eurozone Countries		Turnover Index in Industry in Non-Eurozone Countries	
		Index	Annual rate of change (%)	Index	Annual rate of change (%)	Index	Annual rate of change (%)
2021:	10	164.29	62.0	170.73	60.5	160.86	62.8
	11	168.83	51.5	171.48	51.6	167.42	51.5
	12	168.12	37.5	144.92	34.2	180.45	39.0
2022*:	1	144.68	45.2	156.85	44.6	138.21	45.6
	2	150.66	28.1	173.48	34.2	138.53	24.4
	3	195.65	32.3	226.47	54.0	179.27	20.8
	4	191.13	33.6	191.57	23.0	190.90	40.1
	5	219.50	49.9	235.02	45.1	211.25	52.8
	6	215.20	39.9	218.86	32.5	213.26	44.3
	7	221.59	38.7	208.05	26.5	228.78	45.5
	8	186.39	50.8	185.98	73.7	186.61	41.0
	9	182.46	7.0	183.48	12.7	181.91	4.2
	10	198.29	20.7	216.50	26.8	188.61	17.3

*Provisional data

Note: The indices and the percentage changes are rounded up to two and one decimal digits, respectively, when published.

Table 13. Average indices and rates of change (%) of the 12-month periods of Turnover Index in Industry: Total Market
Base year: 2015=100.0

CodeDivision		Average Indices of 12-month periods			Rate of change (%)	
		Nov. 2021- Oct. 2022*	Nov. 2020- Oct. 2021	Nov. 2019- Oct. 2020	2022/2021	2021/2020
OVERALL INDEX		163.91	120.57	101.08	35.9	19.3
B	MINING AND QUARRYING	106.59	102.75	100.04	3.7	2.7
05-06-09	Mining of coal and lignite - Extraction of crude petroleum and natural gas - Mining support service activities	21.55	34.05	30.48	-36.7	11.7
	07Mining of metal ores	176.82	164.84	190.41	7.3	-13.4
	08Other mining and quarrying products	115.87	108.72	98.19	6.6	10.7
C	MANUFACTURING	164.68	120.82	101.10	36.3	19.5
10	Food	132.90	110.47	102.85	20.3	7.4
11	Beverages	134.85	112.70	99.31	19.6	13.5
12	Tobacco products	169.23	144.35	132.17	17.2	9.2
13	Textiles	128.59	114.59	97.67	12.2	17.3
14	Wearing apparel	91.87	75.63	72.49	21.5	4.3
15	Leather and related products	80.72	63.62	62.98	26.9	1.0
16	Wood and products of wood and cork, except furniture	140.69	112.39	102.40	25.2	9.8
17	Paper and paper products	149.99	115.59	113.27	29.8	2.1
18	Printing and reproduction of recorded products	115.66	94.81	89.65	22.0	5.8
19	Coke and refined petroleum products	192.72	111.08	82.10	73.5	35.3
20	Chemicals and chemical products	182.65	134.54	118.66	35.8	13.4
21	Basic pharmaceutical products and pharmaceutical preparations	206.85	183.88	160.11	12.5	14.8
22	Rubber and plastic products	153.18	126.90	108.63	20.7	16.8
23	Other non-metallic mineral products	143.41	118.59	101.81	20.9	16.5
24	Basic metals	217.30	153.56	116.84	41.5	31.4
25	Fabricated metal products, except machinery and equipment	137.01	117.93	96.58	16.2	22.1
26	Computers, electronic and optical products	226.12	184.11	163.46	22.8	12.6
27	Electrical equipment	212.92	182.83	130.68	16.5	39.9
28	Machinery and equipment n.e.c.	135.14	121.31	105.58	11.4	14.9
29	Motor vehicles, trailers and semi-trailers	178.65	117.30	110.07	52.3	6.6
30	Other transport equipment	89.35	77.92	63.90	14.7	22.0
31	Furniture	147.20	117.59	106.36	25.2	10.6
32	Other manufacturing	129.03	106.40	90.38	21.3	17.7
33	Repair and installation of machinery and equipment	111.83	102.53	98.05	9.1	4.6
MAIN INDUSTRIAL GROUPINGS						
1	Energy	191.44	110.54	81.76	73.2	35.2
2	Intermediate goods	174.85	134.66	111.16	29.8	21.1
3	Capital goods	136.45	119.53	103.40	14.2	15.6
4	Consumer Durables	143.48	113.64	100.61	26.3	12.9
5	Consumer Non-Durables	138.64	117.90	108.42	17.6	8.7

*Provisional data

Note: The indices and the percentage changes are rounded up to two and one decimal digits, respectively, when published.

METHODOLOGICAL NOTES

Generally	The Industrial Turnover Index is an indicator of an enterprise's business cycle showing the monthly evolution of the market of goods and services in industry. The first compilation of the Turnover Index was completed by the Hellenic Statistical Authority in 2006, with base year 2000=100.0 and is compiled from 2000 onwards.
Purpose of the index	The purpose of this index is to measure the monthly activity of the industrial sector in terms of value. Turnover comprises the totals invoiced by the observation units during the reference period and corresponds to the market sales of goods or services supplied to third parties. The purposes and the characteristics of the Turnover Index apply, as well, to the indices for the distinction between domestic and non-domestic turnover.
Legal Framework	The compilation and publication of the Turnover Index is based on the framework of the implementation of Council Regulation (EC) No 1165/1998 concerning short-term statistics (STS-R), as well as Regulation (EC) No 1158/2005 of the European Parliament and of the Council amending Council Regulation (EC) No 1165/1998. Furthermore, this index is governed by Regulation (EC) No 1893/2006 of the European Parliament and of the Council, by Commission Regulation (EC) No 656/2007, by Regulation (EC) No 451/2008 of the Council, by Regulation (EU) No 2019/2152 of the European Parliament and of the Council on European business statistics, as well as Commission Implementing Regulation (EU) No 2020/1197 laying down technical specifications and arrangements pursuant to Regulation (EU) No 2019/2152.
Reference period	Month.
Base year	2015=100.0.
Revision	The latest revision of the Turnover Index in Industry (base year 2015=100.0) took place in the framework of Council Regulation (EC) No 1165/1998 concerning short-term statistics. In accordance with this regulation the index is revised every five years, in years ending in 0 or 5.
Statistical classifications	At the level of classes of economic activities, the statistical classification of economic activities NACE Rev. 2 of EU was used (Regulation No 1893/2006), while at the level of main industrial groupings, the allocation of two-digit and three-digit NACE Rev. 2 headings to categories of aggregate classification was used, in accordance with Commission Regulation No 656/2007.
Geographical coverage	The index covers the whole Country.
Coverage of economic activities	The Turnover Index in Industry is compiled for all activities listed in Sections B (mining and quarrying) and C (manufacturing) of the NACE Rev. 2 statistical classification.
Computation of the Index	The Turnover Index in Industry is a fixed base index. This index is calculated at a first stage at the four-digit level of economic activity and subsequently, with the implementation of appropriate weighting coefficients, the index is calculated at higher levels (three-level and two-level of economic activity) as well as at the level of Main Industrial Groupings (MIGs).
Publication of data	The Turnover Index in Industry (2015=100.0) is released since August 2019 with June 2019 as first reference month. Data with base year 2015=100.0 are available from January 2000 onwards.
References	More information about the methodology concerning the compilation and calculation of the index and for the time series is available on the website of the Hellenic Statistical Authority (ELSTAT) (http://www.statistics.gr/en/statistics/-/publication/DKT24/).