



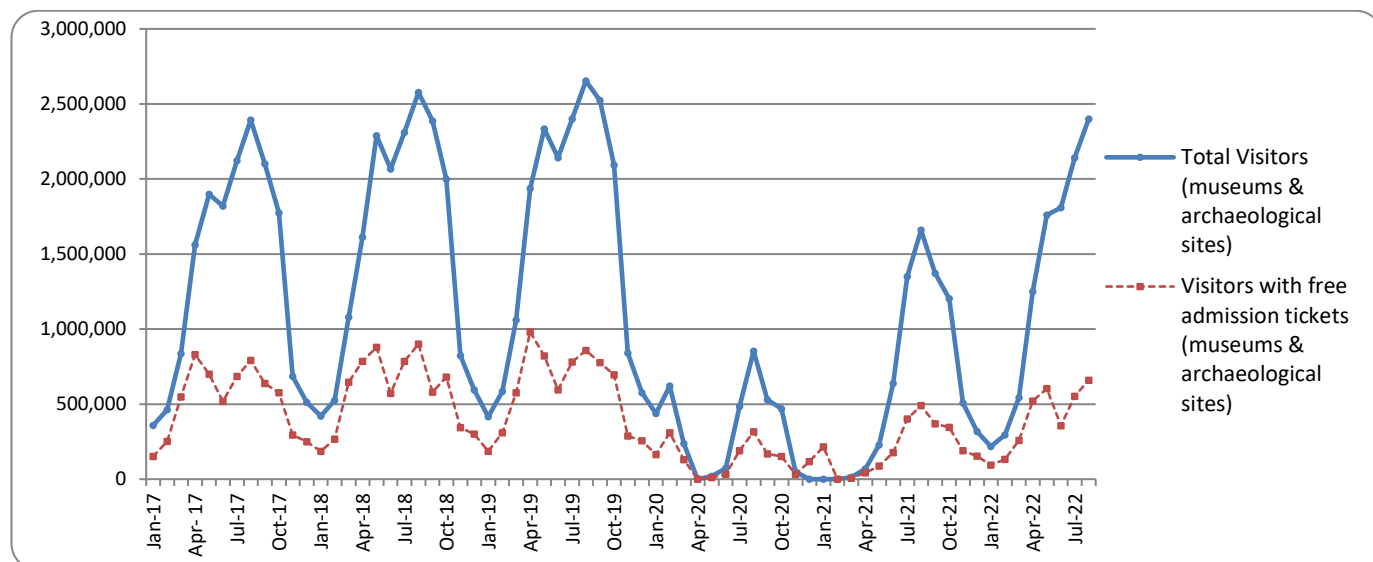
## PRESS RELEASE

### SURVEY ON MUSEUMS AND ARCHAEOLOGICAL SITES ATTENDANCE AUGUST 2022

The Hellenic Statistical Authority (ELSTAT) announces the results of the *Survey on Museums and Archaeological Sites Attendance* for August 2022. More specifically:

- During August 2022 compared with the corresponding month of 2021, Museums recorded a 45.1% increase in the number of visitors and a 36.1% increase in the number of free admission visitors, as well as a 47.8% increase in their receipts (Table 1).
- As regards Archaeological sites, in August 2022 compared with the corresponding month of 2021, an increase of 44.5% was recorded at the number of visitors, of 33.8% in the number of free admission visitors and of 58.5% in the corresponding receipts (Table 1).
- During the eight month period from January to August 2022, compared to the corresponding period of 2021, an increase of 188.2% was recorded in the number of visitors, of 198.6% in the number of free admission visitors and of 169.3% in the relevant receipts, given the fact that in the framework of the preventative measures against the Covid-19 pandemic, the operation of the museums was gradually suspended from November 1<sup>st</sup> 2020 until May 13<sup>th</sup> 2021 (Table 2).
- As regards Archaeological sites, during the eight month period from January to August 2022, compared to the corresponding period of 2021, an increase of 153.9% was recorded in the number of visitors, while an increase of 147.0% was observed in the number of free admission visitors and of 165.9% in the relevant receipts, given the suspension of operation of Archaeological sites from November 7<sup>th</sup> 2020 until March 21<sup>st</sup> 2021 (Table 2).

**Graph 1: Visitors of Museums and Archaeological sites (January 2017 – August 2022)**



**Information on methodological issues:**

Sectoral Statistics Division  
Tourism and Culture Statistics Section  
Head of Section: Eleni Papadopoulou  
Tel: +30 213 135 2168  
e-mail: [e.papadopoulou@statistics.gr](mailto:e.papadopoulou@statistics.gr)

**Information for data provision:**

Tel. +30 213 135 2022, 2308, 2310  
e-mail: [data.dissem@statistics.gr](mailto:data.dissem@statistics.gr)

**TABLE 1: VISITORS OF MUSEUMS AND ARCHAEOLOGICAL SITES - TOTAL RECEIPTS  
(AUGUST 2021 & AUGUST 2022)**

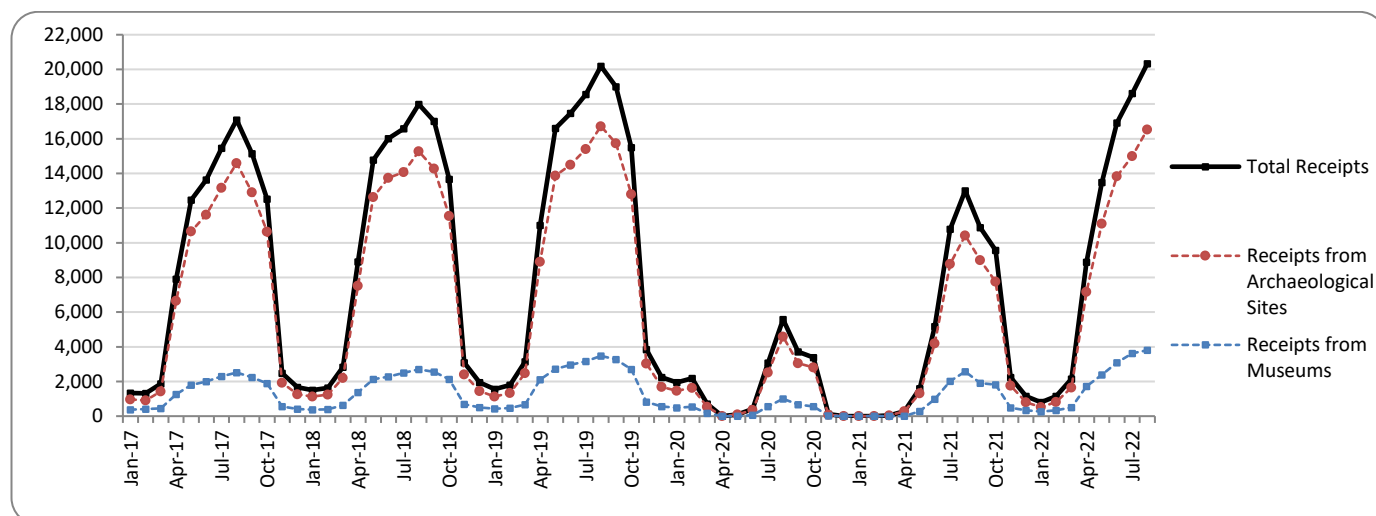
<b>I. NUMBER OF VISITORS</b>			
Museums and Archaeological sites	2021 <sup>(2)</sup>	2022	Change 2022/2021
<b>Total number of visitors (A+B)</b>	<b>1,659,074</b>	<b>2,400,617</b>	<b>44.7%</b>
<b>A. Museums (C+E)</b>	<b>456,672</b>	<b>662,750</b>	<b>45.1%</b>
Acropolis Museum	120,819	193,130	59.9%
National Archaeological	43,098	64,765	50.3%
Ancient Olympia	6,552	9,810	49.7%
Palace of the Grand Master (Rhodes)	38,911	51,521	32.4%
Herakleion Archaeological (Crete)	33,204	47,257	42.3%
White Tower	16,520	30,550	84.9%
Delphi	12,713	16,674	31.2%
Other museums	184,855	249,043	34.7%
<b>B. Archaeological Sites (D+F)</b>	<b>1,202,402</b>	<b>1,737,867</b>	<b>44.5%</b>
Epidavros <sup>(1)</sup>	45,669	57,460	25.8%
The Acropolis of Mycenae & Atreus' Treasure	37,839	49,502	30.8%
The Acropolis of Athens	239,076	426,154	78.3%
Sounio	27,053	36,262	34.0%
The Acropolis of Lindos	87,546	120,249	37.4%
Royal Tombs of Vergina	13,691	16,769	22.5%
Ancient Olympia	30,312	58,133	91.8%
Knossos (Crete)	114,807	166,933	45.4%
Phaistos (Crete)	11,666	12,987	11.3%
Ancient Korinthos <sup>(1)</sup>	12,033	16,910	40.5%
Mystras <sup>(1)</sup>	20,591	23,936	16.2%
Delphi	31,288	47,076	50.5%
Other archaeological sites	530,831	705,496	32.9%
<b>II. VISITORS WHO PAID TICKET</b>			
	2021 <sup>(2)</sup>	2022	Change 2022/2021
<b>Total number of visitors who paid ticket (C+D)</b>	<b>1,168,436</b>	<b>1,740,419</b>	<b>49.0%</b>
C. Museums	297,776	446,453	49.9%
D. Archaeological sites	870,660	1,293,966	48.6%
<b>III. VISITORS WITH FREE ADMISSION TICKETS</b>			
	2021 <sup>(2)</sup>	2022	Change 2022/2021
<b>Total number of visitors with free admission ticket (E+F)</b>	<b>490,638</b>	<b>660,198</b>	<b>34.6%</b>
E. Museums	158,896	216,297	36.1%
F. Archaeological sites	331,742	443,901	33.8%
<b>IV. RECEIPTS (euros)</b>			
	2021 <sup>(2)</sup>	2022	Change 2022/2021
<b>Total Receipts (G+H)</b>	<b>12,998,515</b>	<b>20,331,471</b>	<b>56.4%</b>
G. Museums	2,572,516	3,802,289	47.8%
H. Archaeological sites	10,425,999	16,529,182	58.5%

<sup>(1)</sup> Flat rate ticket, valid both for the museum and the archaeological site.

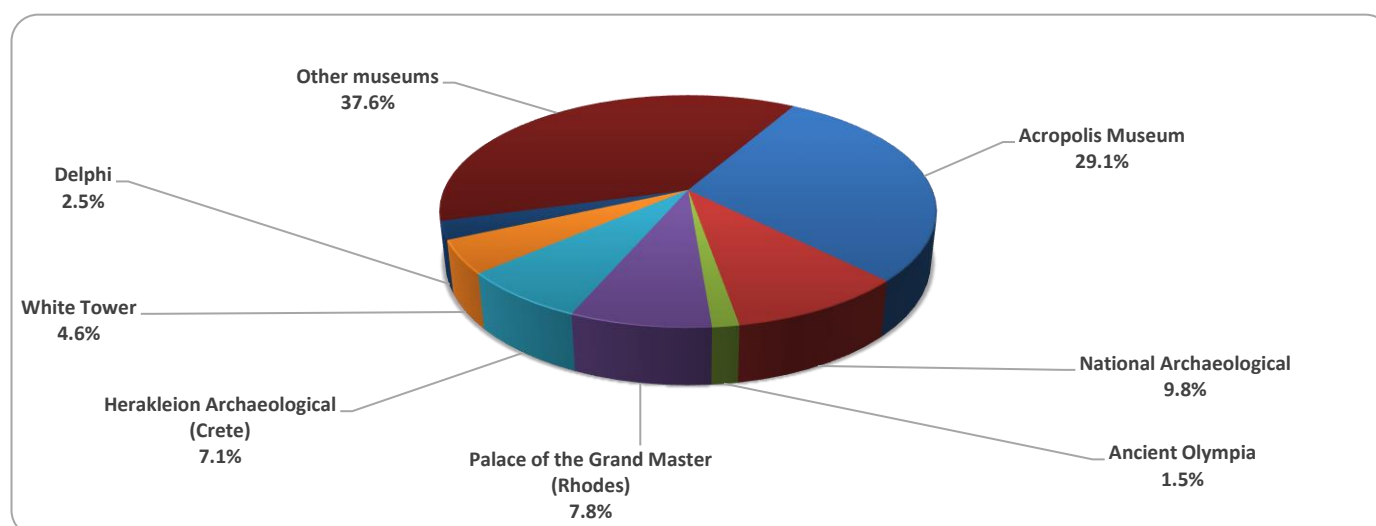
<sup>(2)</sup> The operation of Museums was suspended gradually from November 1<sup>st</sup> 2020 until May 13<sup>th</sup> 2021. The operation of Archaeological Sites was suspended from November 7<sup>th</sup> 2020 until March 21<sup>st</sup> 2021, in the framework of the preventative measures against the Covid-19 pandemic.

The following graphs depict the evolution of the receipts of Museums and Archaeological Sites (Graph 2), as well as the number of visitors by Museum (Graph 3) and by Archaeological Site (Graph 4).

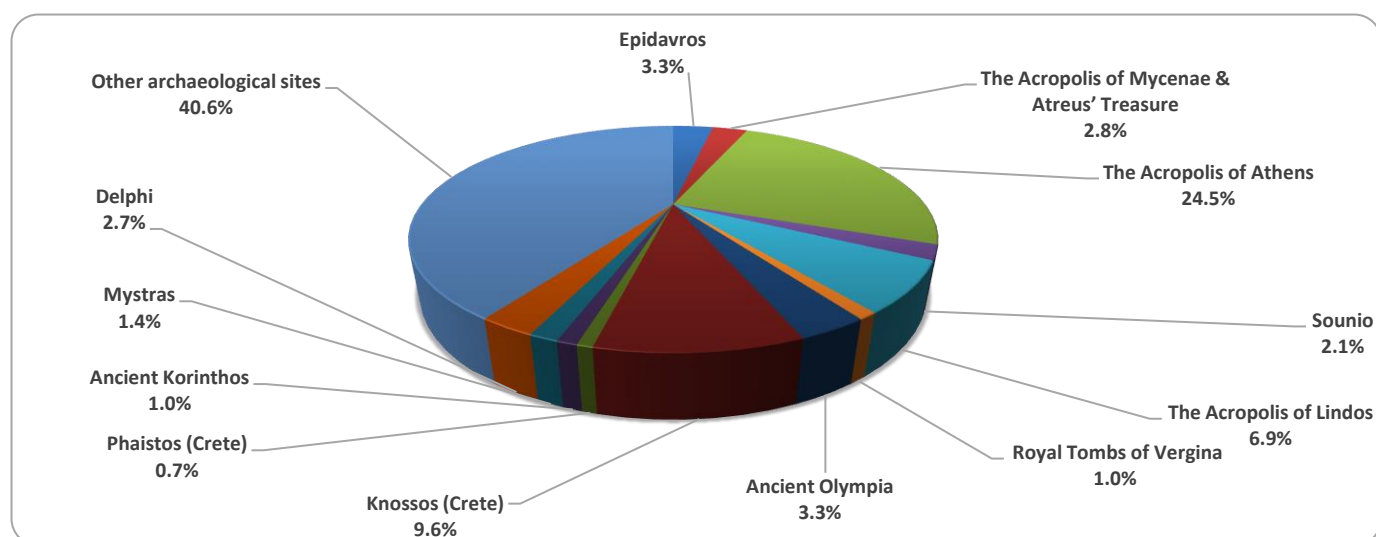
**Graph 2: Receipts from Museums and Archaeological Sites (January 2017 – August 2022)**  
(in thousand euro)



**Graph 3: Percentage distribution of visitors by Museum, August 2022**



**Graph 4: Percentage distribution of visitors by Archaeological site, August 2022**



**TABLE 2: VISITORS OF MUSEUMS AND ARCHAEOLOGICAL SITES - TOTAL RECEIPTS**  
(2020, 2021, JANUARY- AUGUST 2021, 2022)

<b>I. VISITORS</b>					
Museums and Archaeological sites	2020 <sup>(2)</sup>	2021 <sup>(2)</sup>	JANUARY -AUGUST		change 2022/2021
			2021 <sup>(2)</sup>	2022	
<b>Total number of visitors (A+B)</b>	<b>3,772,828</b>	<b>7,357,026</b>	<b>3,957,379</b>	<b>10,413,979</b>	<b>163.2%</b>
<b>A. Museums (C+E)</b>	<b>1,100,904</b>	<b>2,047,481</b>	<b>1,071,033</b>	<b>3,086,514</b>	<b>188.2%</b>
Acropolis Museum	325,969	547,908	283,941	953,981	236.0%
National Archaeological	98,175	189,208	93,764	299,312	219.2%
Ancient Olympia	21,956	34,367	17,107	61,467	259.3%
Palace of the Grand Master (Rhodes)	54,572	142,530	79,323	178,866	125.5%
Herakleion Archaeological (Crete)	63,027	127,574	72,378	165,194	128.2%
White Tower	62,007	77,983	41,091	123,124	199.6%
Delphi	41,984	58,102	28,684	97,752	240.8%
Other museums	433,214	869,809	454,745	1,206,818	165.4%
<b>B. Archaeological Sites (D+F)</b>	<b>2,671,924</b>	<b>5,309,545</b>	<b>2,886,346</b>	<b>7,327,465</b>	<b>153.9%</b>
Epidavros <sup>(1)</sup>	103,532	182,118	101,110	265,962	163.0%
The Acropolis of Mycenae & Atreus' Treasure	78,839	156,227	81,670	249,315	205.3%
The Acropolis of Athens	620,132	1,219,717	634,077	1,992,927	214.3%
Sounio	100,319	171,348	97,234	212,789	118.8%
The Acropolis of Lindos	156,462	349,418	197,669	411,542	108.2%
Royal Tombs of Vergina	37,586	56,790	29,418	105,297	257.9%
Ancient Olympia	64,759	143,549	75,574	222,137	193.9%
Knossos (Crete)	175,927	445,160	260,246	575,921	121.3%
Phaistos (Crete)	31,885	48,599	25,899	48,022	85.4%
Ancient Korinthos <sup>(1)</sup>	31,981	59,271	27,852	95,411	242.6%
Mystras <sup>(1)</sup>	36,352	78,762	44,770	98,463	119.9%
Delphi	75,983	146,061	73,209	214,855	193.5%
Other archaeological sites	1,158,167	2,252,525	1,237,618	2,834,824	129.1%
<b>II. VISITORS WHO PAID TICKET</b>					
	2020 <sup>(2)</sup>	2021 <sup>(2)</sup>	JANUARY -AUGUST		change 2022/2021
			2021 <sup>(2)</sup>	2022	
<b>Total number of visitors who paid ticket (C+D)</b>	<b>2,268,397</b>	<b>5,090,418</b>	<b>2,750,434</b>	<b>7,233,935</b>	<b>163.0%</b>
C. Museums	605,426	1,289,896	685,725	1,936,076	182.3%
D. Archaeological sites	1,662,971	3,800,522	2,064,709	5,297,859	156.6%
<b>III. VISITORS WITH FREE ADMISSION TICKETS</b>					
	2020 <sup>(2)</sup>	2021 <sup>(2)</sup>	JANUARY -AUGUST		change 2022/2021
			2021 <sup>(2)</sup>	2022	
<b>Total number of visitors with free admission ticket (E+F)</b>	<b>1,504,431</b>	<b>2,266,608</b>	<b>1,206,945</b>	<b>3,180,044</b>	<b>163.5%</b>
E. Museums	495,478	757,585	385,308	1,150,438	198.6%
F. Archaeological sites	1,008,953	1,509,023	821,637	2,029,606	147.0%
<b>IV. RECEIPTS (euros)</b>					
	2020 <sup>(2)</sup>	2021 <sup>(2)</sup>	JANUARY -AUGUST		change 2022/2021
			2021 <sup>(2)</sup>	2022	
<b>Total Receipts (G+H)</b>	<b>21,176,036</b>	<b>54,735,194</b>	<b>30,884,834</b>	<b>82,334,082</b>	<b>166.6%</b>
G. Museums	4,047,401	10,385,644	5,844,932	15,741,506	169.3%
H. Archaeological sites	17,128,635	44,349,550	25,039,902	66,592,576	165.9%

<sup>(1)</sup> Flat rate ticket, valid both for the museum and the archaeological site.

<sup>(2)</sup> The operation of Museums was suspended from March 14<sup>th</sup> until June 16<sup>th</sup> 2020 and again gradually from November 1<sup>st</sup> 2020 until May 13<sup>th</sup> 2021. The operation of Archaeological Sites was suspended from March 14<sup>th</sup> until May 17<sup>th</sup> 2020 and from November 7<sup>th</sup> 2020 until March 21<sup>st</sup> 2021, in the framework of the preventative measures against the Covid-19 pandemic.

## EXPLANATORY NOTES

<b>Survey on Museums and Archaeological Sites Attendance</b>	<p>The Survey on Museums and Archaeological Sites Attendance has been producing results since 1970. The survey collects data from the Hellenic Organization of Cultural Resources Development (HOCRED), supervised by the Ministry of Culture and Sports, on the number of visitors and the receipts from the tickets sold in the Museums and Archaeological sites of the country. The corresponding data for the Acropolis Museum is available from December 2009 onwards.</p>
<b>Legal Framework</b>	<p>The survey is conducted since 1970 on a regular basis and it produces results on a monthly and yearly basis, in compliance with the Joint Ministerial Decision 15189/B379/73.</p>
<b>Reference Period</b>	<p>1/8/2022 - 31/8/2022</p>
<b>Methodology and Definitions</b>	<p>The survey is conducted on a monthly basis from data mainly collected from the Hellenic Organization of Cultural Resources Development (HOCRED), supervised by the Ministry of Culture and Sports, on the number of visitors and the receipts from the tickets sold in the Museums and Archaeological sites of the Country. ELSTAT tabulates and presents the data for the whole of the Country, by month and by year.</p> <p><b>Number of flat rate tickets:</b></p> <p>From April 1999 onwards, in some museums and the nearby archaeological sites, in addition to the ordinary ticket, a new “flat rate ticket” was established, which is valid for both the museum and the nearby archaeological site. The total number of these flat rate tickets for <b>August 2022</b> was <b>161,581</b></p>
<b>References</b>	<p>More information on the Survey on Museums and Archaeological Sites Attendance and detailed time series are available on: <a href="http://www.statistics.gr/en/statistics/-/publication/SCI21/-">http://www.statistics.gr/en/statistics/-/publication/SCI21/-</a></p>