



HELLENIC REPUBLIC

HELLENIC STATISTICAL AUTHORITY

Piraeus, 22 December 2020

PRESS RELEASE

ARRIVALS AND NIGHTS SPENT IN HOTELS, SIMILAR ESTABLISHMENTS AND TOURIST CAMPSITES: JANUARY – SEPTEMBER 2020 (provisional data)

According to the provisional results of the Survey on Arrivals and Nights Spent in Hotels, Similar Establishments and Tourist Campsites, conducted by the Hellenic Statistical Authority (ELSTAT), for the total of these establishments, a decrease of 69.0% is recorded in arrivals (Table 1) and a 72.9% decrease in nights spent (Table 2), for the period of January – September 2020 compared with the corresponding period of 2019.

More specifically, during the period of January-September 2020, arrivals and nights spent by non-residents recorded a decrease of 78.4% in arrivals and 78.5% in nights spent and by residents a decrease of 41.0% and 40.9%, respectively, compared with the same period of 2019 (Tables 1 and 2, Graphs 3 and 4).

During the period January – September 2020, the largest share of arrivals and nights spent in hotels, similar establishments and tourist campsites, was recorded by non-residents, i.e. 52.1% of arrivals and 67.8% of nights spent (Graph 5).

For the same period, the average number of nights spent per person amounted to 3.7 nights. More specifically, the average number of nights spent was 4.8 nights for non-residents and 2.5 nights for residents (Graph 6).

The total occupancy of the bed places in hotels and similar establishments (excluding tourist campsites), which is based on the nights spent compared to the bed places that were in operation, amounted to 34.9% during the period of January – September 2020, compared with 53.9% in the corresponding period of 2019 (Table 3, Graph 7).

Information on methodological issues:

Sectoral Statistics Division
Tourism and Cultural Statistics Section
Head of the Section: Asimina Katri
Tel: +30 213 135 2168
Fax: +30 210 482 2669
e-mail: a.katri@statistics.gr

Information for data provision:

Tel. +30 213 135 2022, 2308, 2310
e-mail: data.dissem@statistics.gr

Table1. Arrivals of residents and non-residents at hotels, similar establishments and tourist campsites, by month, January – September 2019 and 2020⁽¹⁾

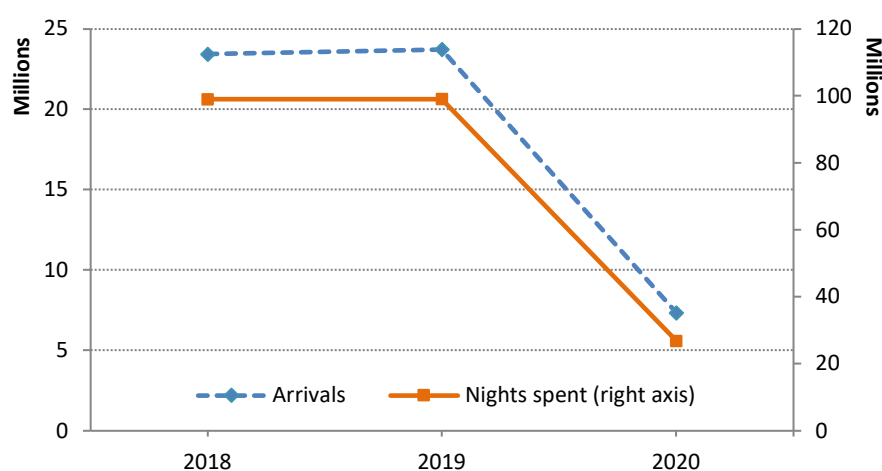
2019						2020					Change % 2020/2019		
Hotels and similar establishments			Tourist Campsites			Hotels and similar establishments			Tourist Campsites		Total establishments		
Month	Total	Residents	Non-residents	Residents	Non-residents	Total	Residents	Non-residents	Residents	Non-residents	Total	Residents	Non-residents
Jan- Sept	23,720,155	5,803,447	17,451,052	160,269	305,387	7,344,109	3,381,204	3,759,814	136,236	66,855	-69.0	-41.0	-78.4
January	640,395	431,834	208,170	123	268	766,644	521,199	244,945	49	451	19.7	20.7	17.7
February	683,702	439,306	243,981	97	318	818,178	566,874	250,649	91	564	19.7	29.0	2.8
March	1,029,916	592,263	436,512	184	957	299,301	190,774	107,946	57	524	-70.9	-67.8	-75.2
April	1,863,610	672,064	1,181,583	1,019	8,944	15,185	12,032	3,153	-	-	-99.2	-98.2	-99.7
May	3,035,350	579,757	2,416,815	4,890	33,888	32,760	28,476	4,284	-	-	-98.9	-95.1	-99.8
June	3,847,812	697,685	3,078,585	21,876	49,666	343,037	265,994	55,240	16,131	5,672	-91.1	-60.8	-98.1
July	4,300,935	789,609	3,385,486	48,168	77,672	1,397,301	584,147	748,753	44,141	20,260	-67.5	-25.0	-77.8
August	4,617,561	961,142	3,492,493	74,592	89,334	2,186,541	794,876	1,300,415	66,383	24,867	-52.6	-16.8	-63.0
September	3,700,874	639,787	3,007,427	9,320	44,340	1,485,162	416,832	1,044,429	9,384	14,517	-59.9	-34.3	-65.3

Table 1. Nights spent of residents and non-residents in hotels, similar establishments and tourist campsites, by month, January – September 2019 and 2020⁽¹⁾

2019						2020					Μεταβολή % 2020/2019		
Hotels and similar establishments			Tourist Campsites			Hotels and similar establishments			Tourist Campsites		Total establishments		
Month	Total	Residents	Non-residents	Residents	Non-residents	Total	Residents	Non-residents	Residents	Non-residents	Total	Residents	Non-residents
Jan- Sept	99,058,316	13,690,934	83,289,751	934,516	1,143,115	26,831,017	8,030,379	17,919,862	606,699	274,077	-72.9	-40.9	-78.5
January	1,365,266	857,470	505,820	1,011	965	1,544,526	987,695	555,423	140	1,268	13.1	15.1	9.8
February	1,433,590	838,666	593,415	630	879	1,651,746	1,052,824	597,213	358	1,351	15.2	25.5	0.7
March	2,213,638	1,165,842	1,044,675	810	2,311	729,833	421,550	306,349	376	1,558	-67.0	-63.8	-70.6
April	5,523,398	1,453,384	4,045,634	3,728	20,652	49,310	34,347	14,963	-	-	-99.1	-97.6	-99.6
May	11,911,061	1,165,868	10,582,260	66,275	96,658	78,932	61,299	17,633	-	-	-99.3	-95.0	-99.8
June	17,070,122	1,568,024	15,173,917	135,051	193,130	759,950	526,699	164,726	45,369	23,156	-95.5	-66.4	-98.8
July	20,816,590	2,165,618	18,074,606	260,416	315,950	5,447,901	1,457,562	3,715,101	189,255	85,983	-73.8	-32.1	-79.3
August	22,180,605	3,027,762	18,407,849	393,604	351,390	9,797,423	2,539,077	6,829,507	329,721	99,118	-55.8	-16.2	-63.1
September	16,544,046	1,448,300	14,861,575	72,991	161,180	6,771,396	949,326	5,718,947	41,480	61,643	-59.1	-34.9	-61.5

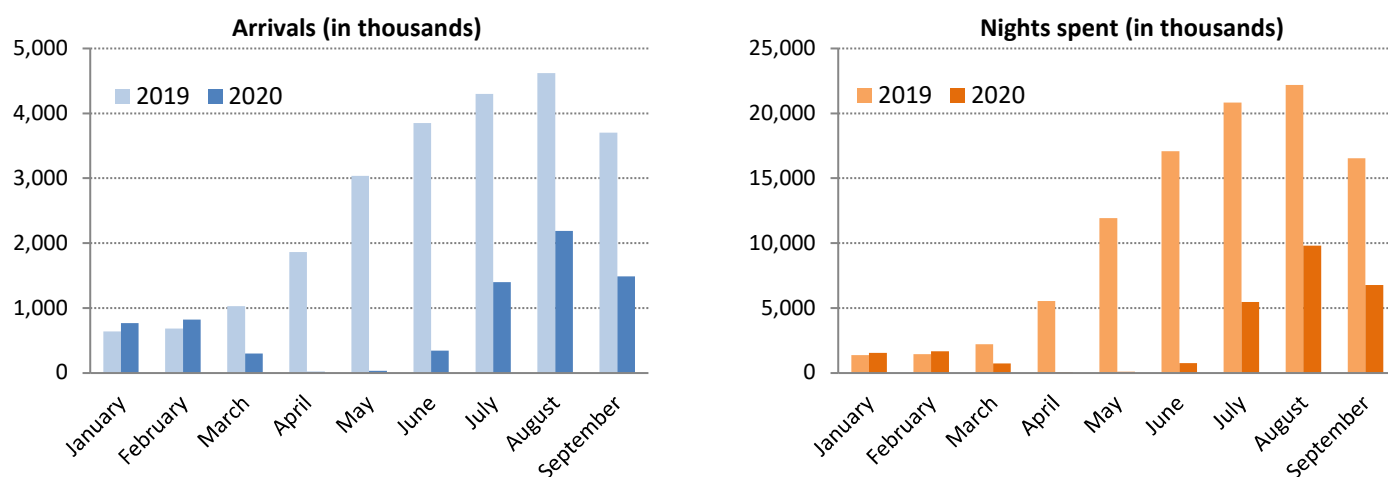
(1) Provisional data.

Graph 1. Arrivals and nights spent in hotels, similar establishments and tourist campsites, January – September 2018 – 2020⁽¹⁾



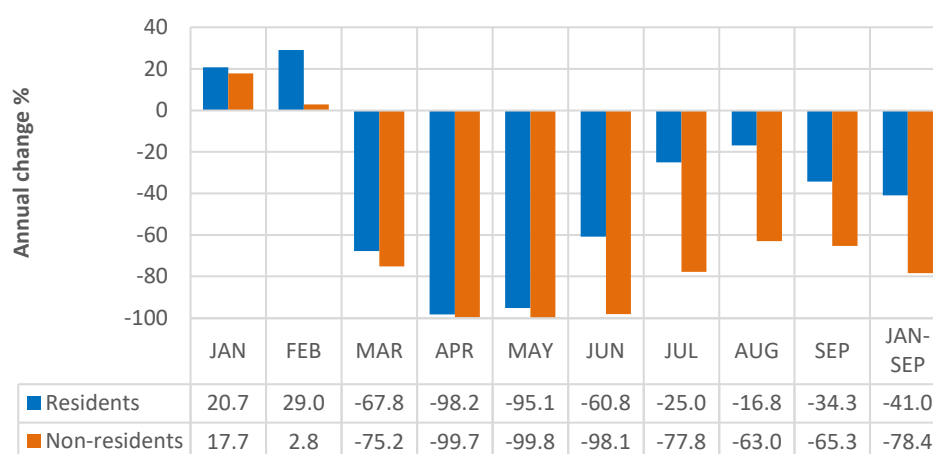
(1) Provisional data.

Graph 2. Arrivals and nights spent in hotels, similar establishments and tourist campsites, by month, January – September 2019 and 2020⁽¹⁾



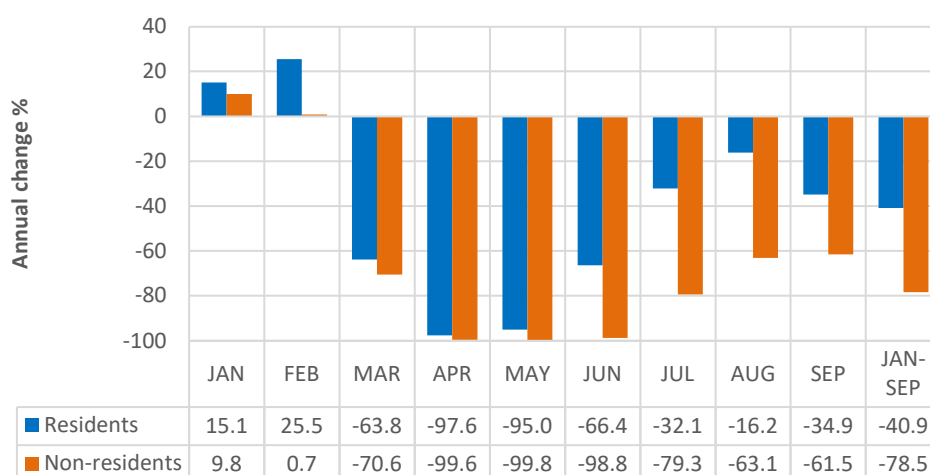
(1) Provisional data.

Graph 3. Annual change 2020/2019 (%) of arrivals in hotels, similar establishments and tourist campsites, by month, January – September 2020⁽¹⁾



(1) Provisional data.

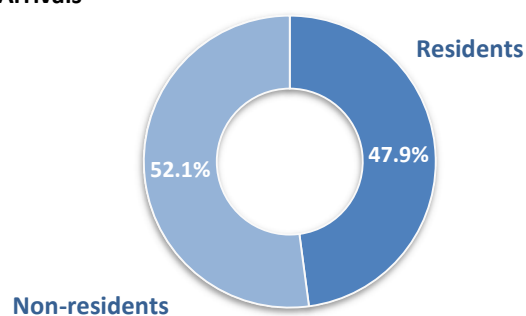
Graph 4. Annual change 2020/2019 (%) of nights spent in hotels, similar establishments and tourist campsites, by month, January – September 2020⁽¹⁾



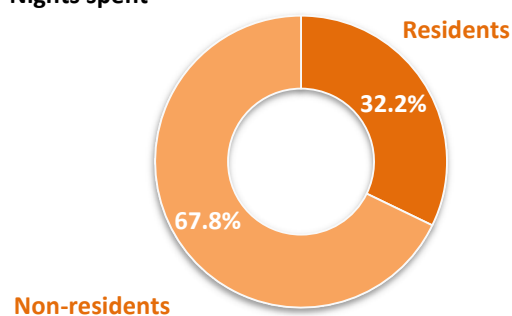
(1) Provisional data.

Graph 5. Arrivals and nights spent by residents and non-residents in hotels, similar establishments and tourist campsites, January – September 2020⁽¹⁾

Arrivals

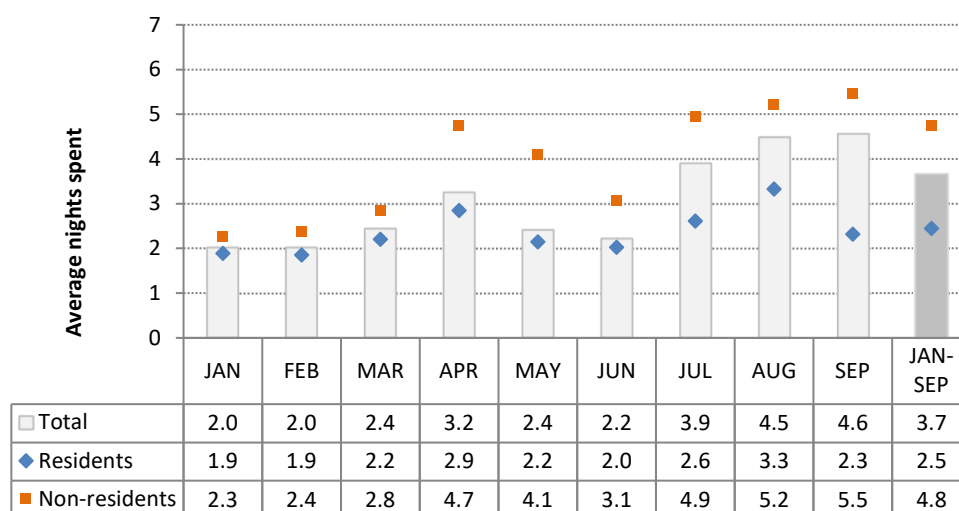


Nights spent



(1) Provisional data.

Graph 6. Average nights spent per guest in hotels, similar establishments and tourist campsites, by month, January – September 2020⁽¹⁾

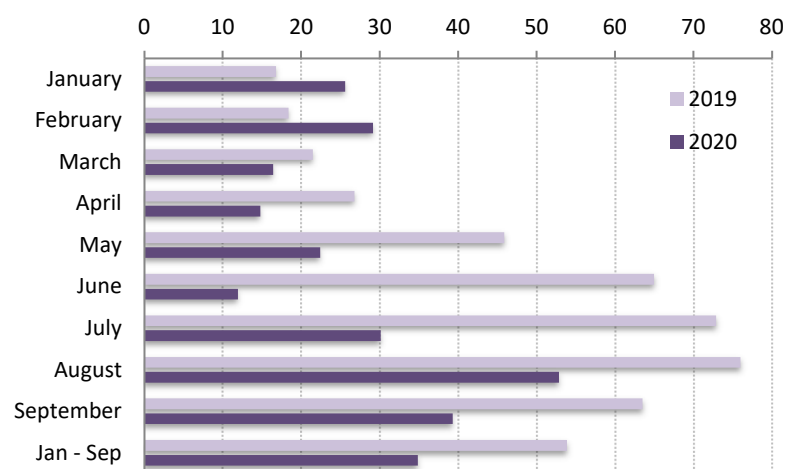


(1) Provisional data.

Table 3. Occupancy (%) of bed-places in hotels and similar establishments, by month, January – September 2019 and 2020⁽¹⁾⁽²⁾

Month	2019	2020
Jan- Sept	53.9	34.9
January	16.8	25.6
February	18.4	29.1
March	21.5	16.4
April	26.8	14.8
May	45.9	22.4
June	65.0	11.9
July	72.9	30.1
August	76.0	52.8
September	63.5	39.3

Graph 7. Occupancy (%) of bed-places in hotels and similar establishments, by month, January – September 2019 and 2020⁽¹⁾⁽²⁾



(1) Provisional data.

(2) The occupancy of bed-places refers to the bed-places that were in operation for each reference period.

EXPLANATORY NOTES

Arrivals and nights spent at hotels, similar establishments and tourist campsites	Data on arrivals and nights spent at hotels, similar establishments and tourist campsites are collected from a monthly census survey. Each establishment fills in a questionnaire, for every month that it is in operation. It is mandatory for all hotels, similar establishments and tourist campsites to participate in the survey.
Legal frame	The survey is conducted pursuant to Regulation 692/2011 of the European Parliament and of the Council.
Reference unit	The information on the reference units (hotels, similar establishments and tourist campsites) is obtained from the Register of the Hellenic Chamber of Hotels. On the basis of this Register the relevant databases and registers of the Hellenic Statistical Authority (ELSTAT) are updated on a quarterly basis.
Reference period	The survey results refer to 100% of the total of the available bed-places.
Data dissemination	Final annual data are published in July of the following year. As regards the annual data there is a press release and detailed tables.
Reference period	January - September 2020.
Definitions	<p><u>Resident</u>: Every person, regardless of citizenship, that has resided in Greece for at least a year, or has arrived in Greece with the intention to reside in the country for at least 1 year.</p> <p><u>Non-resident</u>: Every person, regardless of citizenship, that is not considered to be resident.</p> <p><u>Arrivals</u>: The arrivals at the establishments are calculated for every person separately. The data refer to the total number of persons and not to the total number of rooms that were occupied. Only the persons that had at least one overnight stay at the establishment are counted.</p> <p><u>Nights spent</u>: The nights spent are calculated for every person separately. The data refer to the total number of nights spent by every person and not to the total number of nights spent in every room.</p> <p><u>Occupancy of bed-places</u>: The monthly occupancy of bed-places is calculated on the basis of the number of the bed-places, as reported by each establishment. The rate refers to the occupancy that was accomplished, as compared with the maximum occupancy that is expected according to the available bed-places.</p> <p>The occupancy of the period is the result of the average occupancy rates of every month of the period, weighted by the bed-places that were in operation for each month.</p>
Methodology	<p>This is a census survey and is conducted on a monthly basis. The data are compiled through the collection and processing of the relevant data submitted, via a specific questionnaire, by hotels, similar establishments and tourist campsites for each month of operation. The questionnaires are mostly submitted electronically, via ELSTAT's electronic application "Xenios Zeus" or, alternatively, for establishments that this is not possible, in paper form. The survey is based on the Statistical Register of hotels, similar establishments and tourist campsites, which is updated during the year, so that data refer to the actual number of accommodation establishments and campsites that are in operation.</p> <p>Non-response to the survey is addressed as follows:</p> <ol style="list-style-type: none"> 1. Regular reminders are sent out to the establishments that have not responded to the survey, for submitting data. 2. For the percentage of establishments, which despite the reminders still have not responded to the survey, supplementary administrative data are used, and statistical methods are applied for grossing-up of the results to the total of establishments.
Data collection during the pandemic period of coronavirus disease 2019 (COVID-19)	<p>Since March 2020 special measures were taken for the operation of accommodation establishments. In specific, for the period of 15 March to 15 June 2020 the operation of tourist accommodation establishments that operate on a seasonal basis was suspended in the framework of the containment measures against the Covid-19 pandemic, whereas the operation of tourist accommodation establishments that operate on a continuous basis was suspended for the period from 23 March to 31 May 2020.</p> <p>For the compilation of the provisional data of arrivals and nights spent for the nine-month period of January - September 2020, both data collected by the survey and administrative</p>

data sources were used. Specifically,

a. the establishments of the Register of hotels and tourist campsites, were identified on the basis of administrative data for each reference period.

b. the survey was conducted on the afore-mentioned establishments

c. for the accommodation establishments that were in operation but did not respond to the survey, statistical methods were used for addressing non-response by grossing-up the collected data to the 100% of the total of the available bed-places.

It is noted that during this period only a few establishments were in operation for special purposes such as the accommodation of people in quarantine, public servants that were transferred for special reasons, etc. In such cases arrivals and nights spent were not recorded, as they are not in the scope of the survey (Regulation EU 692/2011).

References More information on the survey results on hotels, similar establishments and tourist campsites at a more detailed geographical level is available on the website of ELSTAT at: <http://www.statistics.gr/en/statistics/-/publication/STO12/->