



PRESS RELEASE

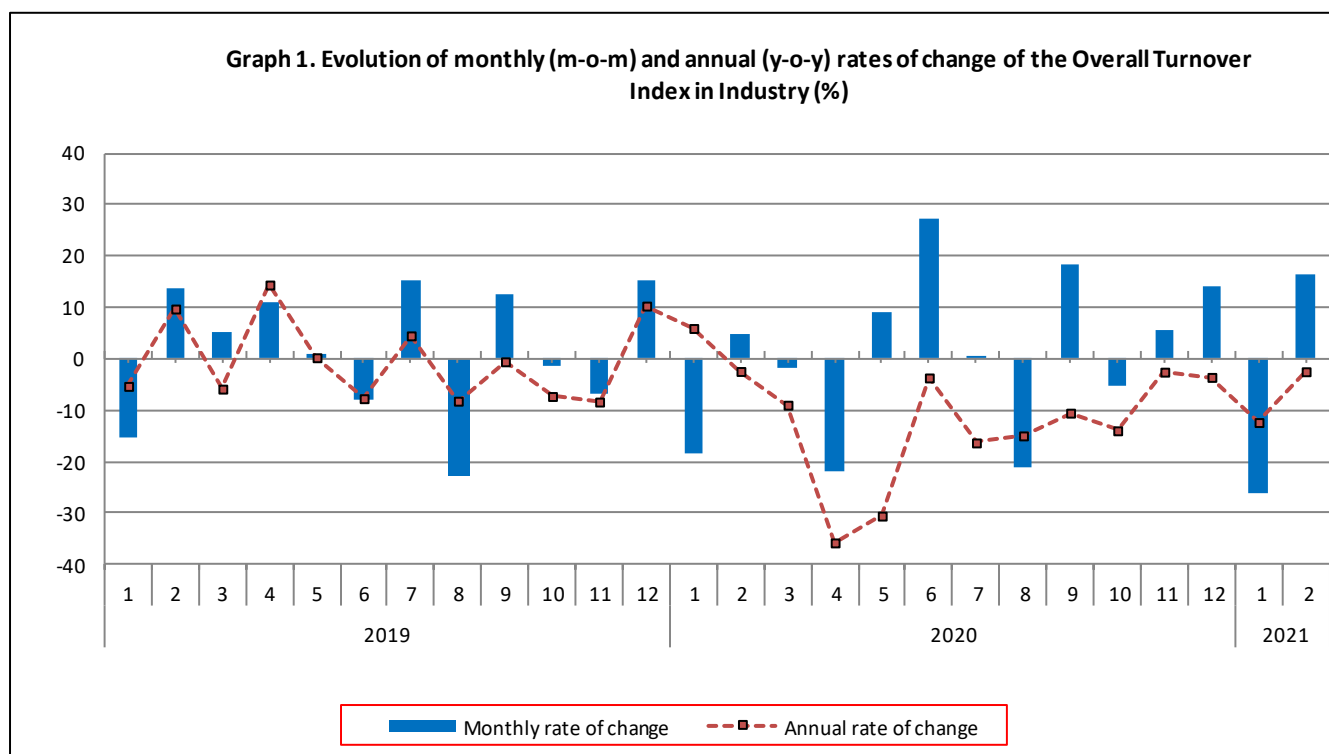
TURNOVER INDEX IN INDUSTRY: February 2021, y-o-y decrease of 2.4%

The Hellenic Statistical Authority announces the Turnover Index in Industry with base year 2015=100.0 for February 2021, on the basis of provisional data, which is as follows:

The Overall Turnover Index in Industry (both domestic and non-domestic market) in February 2021 recorded a decrease of 2.4% compared with the corresponding index of February 2020. The Overall Turnover Index in Industry in February 2020 decreased by 2.4% compared with the corresponding index in February 2019 (Table 1).

The Overall Turnover Index in Industry in February 2021, compared with January 2021, recorded an increase of 16.4% (Table 6).

The average Overall Turnover Index in Industry for the 12-month period from March 2020 to February 2021 decreased by 13.4%, compared with the corresponding index of the 12-month period from March 2019 to February 2020. The average Overall Turnover Index in Industry for the 12-month period from March 2019 to February 2020 decreased by 0.6% compared with the corresponding index of the 12-month period from March 2018 to February 2019 (Table 13).



Information for methodological issues:

Division of Business Statistics
Section of Manufacture-Construction Indices and Industrial Products
Head of the Section : Diamantaki Aikaterini
Tel: +30 213 135 2056
E-mail: a.diamantaki@statistics.gr

Information for data provision:

Tel: +30 213 135 2022, 2308, 2310
E-mail: data.dissem@statistics.gr

Evolution of the Overall Turnover Index in Industry in February 2021

I. Annual changes of the Overall Turnover Index in Industry: February 2021/February 2020

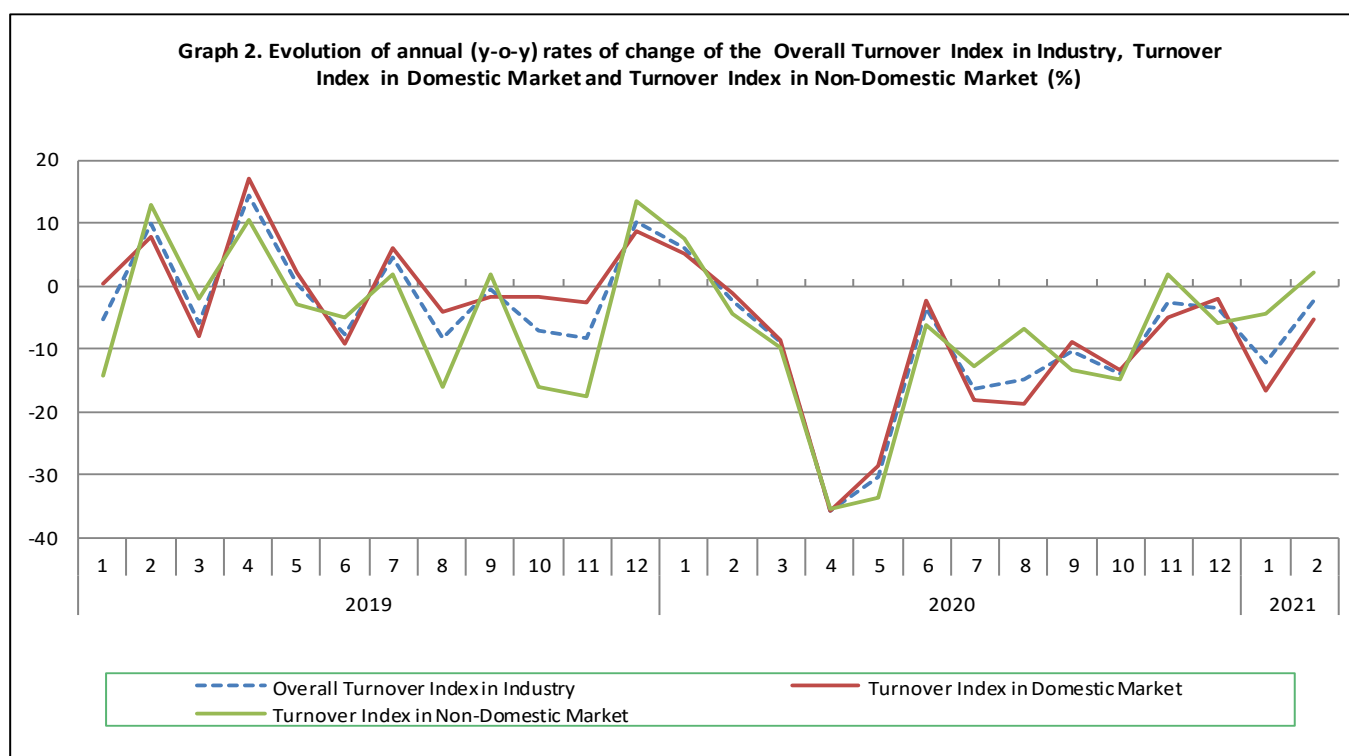
The 2.4% decrease in the Overall Turnover Index in Industry in February 2021, compared with the corresponding index in February 2020, was due to the following:

1. Changes in the sub-indices of the industrial sections (Table 1):

- The Turnover Index in Mining and quarrying decreased by 18.0%. The decrease was mainly the result of the annual change of the sub-index in the following 2-digit division: mining of metal ores.
- The Turnover Index in Manufacturing decreased by 2.2%. The decrease was mainly the result of the annual changes of the sub-indices in the following 2-digit divisions: wearing apparel, beverages, printing and reproduction of recorded products, coke and refined petroleum products.

2. Changes in the sub-indices in domestic and non-domestic markets:

- The Turnover Index in Industry in domestic market decreased by 5.2% (Table 2).
- The Turnover Index in Industry in non-domestic market increased by 2.3% (Table 3).



II. Annual changes of the Turnover Index in Industry in Domestic Market: February 2021/February 2020

The 5.2% decrease of the Turnover Index in Industry in domestic market in February 2021, compared with February 2020, is due to the following annual changes in the sub-indices of the following industrial sections (Table 2):

- The Turnover Index in Manufacturing decreased by 5.4%. The decrease was mainly the result of the annual changes of the sub-indices in the following 2-digit divisions: wearing apparel, beverages, coke and refined petroleum products, furniture.
- The Turnover Index in Mining and quarrying increased by 19.1%. The increase was mainly the result of the annual changes of the sub-indices in the following 2-digit divisions: mining of coal and lignite - extraction of crude petroleum and natural gas - mining support service activities, mining of metal ores.

III. Annual changes of the Turnover Index in Industry in Non-Domestic Market: February 2021/February 2020

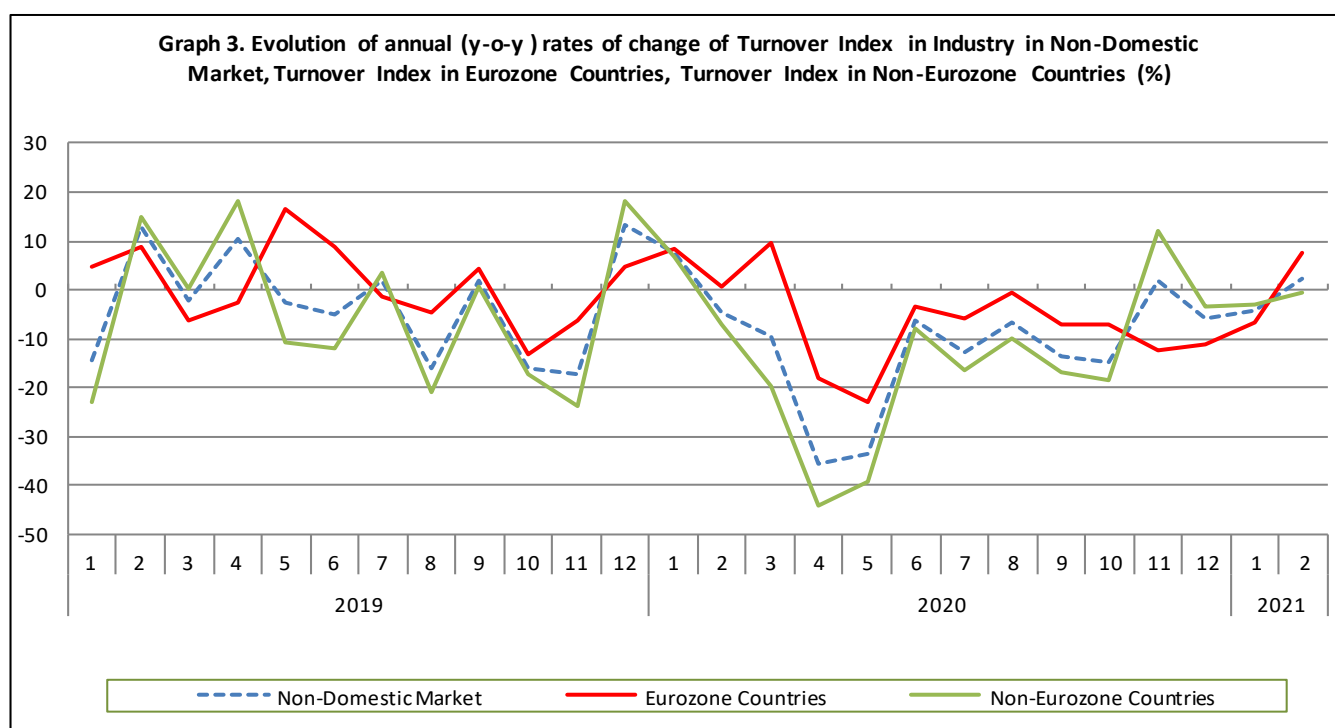
The 2.3% increase of the Turnover Index in Industry in Non-Domestic market in February 2021, compared with February 2020, was due to the following:

1. Changes in the sub-indices of the industrial sections (Table 3):

- The Turnover Index in Manufacturing increased by 3.1%. The increase was mainly the result of the annual changes of the sub-indices in the following 2-digit divisions: beverages, basic pharmaceutical products and pharmaceutical preparations, electrical equipment, textiles.
- The Turnover Index in Mining and quarrying decreased by 34.6%. The decrease was mainly the result of the annual changes of the sub-indices in the following 2-digit divisions: mining of metal ores, other mining and quarrying products.

2. Changes in the sub-indices in Eurozone and Non-Eurozone countries:

- The Turnover Index in Industry in Eurozone countries increased by 7.5% (Table 4).
- The Turnover Index in Industry in non-Eurozone countries decreased by 0.7% (Table 5).



IV. Monthly changes of the Overall Turnover Index in Industry: February 2021/ January 2021

The 16.4% increase of the Overall Turnover Index in Industry in February 2021, compared with the corresponding index in January 2021, was due to the following:

1. Changes in the sub-indices of industrial sections (Table 6):

- The Turnover Index in Manufacturing increased by 16.7%.
- The Turnover Index in Mining and quarrying decreased by 4.5%.

2. Changes in the sub-indices in domestic and non-domestic market:

- The Turnover Index in Industry in non-domestic market increased by 18.1% (Table 8).
- The Turnover Index in Industry in domestic market increased by 15.3% (Table 7).

Table 1. Annual rates of change of the Turnover Index in Industry: Total Market

Base year: 2015=100.0

Code		Division	Weights	February			Rate of change (%)	
				2021*	2020*	2019	2021/2020	2020/2019
OVERALL INDEX				101.34	103.89	106.44	-2.4	-2.4
B	MINING AND QUARRYING		100.00	80.92	98.71	95.12	-18.0	3.8
05-06-09	Mining of coal and lignite - Extraction of crude petroleum and natural gas - Mining support service activities		21.19	17.33	0.82	41.19	2001.9	-98.0
07	Mining of metal ores		17.56	135.08	255.49	175.92	-47.1	45.2
08	Other mining and quarrying products		61.25	87.39	87.61	90.61	-0.2	-3.3
C	MANUFACTURING		100.00	101.62	103.96	106.59	-2.2	-2.5
10	Food		23.39	101.04	102.98	98.57	-1.9	4.5
11	Beverages		3.57	72.34	84.47	78.85	-14.4	7.1
12	Tobacco products		1.19	130.13	135.88	127.22	-4.2	6.8
13	Textiles		1.28	97.94	89.67	93.60	9.2	-4.2
14	Wearing apparel		1.80	57.74	80.68	85.53	-28.4	-5.7
15	Leather and related products		0.34	35.96	90.45	101.41	-60.2	-10.8
16	Wood and products of wood and cork, except furniture		0.72	91.59	101.51	90.98	-9.8	11.6
17	Paper and paper products		2.44	103.68	113.06	107.09	-8.3	5.6
18	Printing and reproduction of recorded products		1.17	77.75	90.39	92.78	-14.0	-2.6
19	Coke and refined petroleum products		28.73	85.12	92.72	115.71	-8.2	-19.9
20	Chemicals and chemical products		4.43	120.17	118.89	106.82	1.1	11.3
21	Basic pharmaceutical products and pharmaceutical preparations		3.67	190.73	147.45	122.44	29.4	20.4
22	Rubber and plastic products		3.47	114.67	105.75	98.16	8.4	7.7
23	Other non-metallic mineral products		3.31	97.11	100.66	98.44	-3.5	2.3
24	Basic metals		7.19	126.66	133.08	132.46	-4.8	0.5
25	Fabricated metal products, except machinery and equipment		4.51	93.26	90.64	86.78	2.9	4.4
26	Computers, electronic and optical products		0.78	162.71	177.20	138.02	-8.2	28.4
27	Electrical equipment		2.65	155.25	124.12	139.04	25.1	-10.7
28	Machinery and equipment n.e.c.		1.56	96.39	105.59	94.14	-8.7	12.2
29	Motor vehicles, trailers and semi-trailers		0.23	91.21	110.15	73.82	-17.2	49.2
30	Other transport equipment		0.52	55.07	53.70	40.28	2.6	33.3
31	Furniture		0.97	84.92	100.62	86.61	-15.6	16.2
32	Other manufacturing		0.66	80.67	93.15	89.50	-13.4	4.1
33	Repair and installation of machinery and equipment		1.42	92.72	96.10	81.57	-3.5	17.8
MAIN INDUSTRIAL GROUPINGS								
1	Energy		28.57	84.63	92.01	115.06	-8.0	-20.0
2	Intermediate goods		28.29	115.07	114.97	111.86	0.1	2.8
3	Capital goods		7.00	95.97	99.95	87.68	-4.0	14.0
4	Consumer Durables		1.86	89.81	89.93	86.05	-0.1	4.5
5	Consumer Non-Durables		34.28	105.66	106.20	99.72	-0.5	6.5

* Provisional data

Note: The indices and the percentage changes are rounded up to two and one decimal digits, respectively, when published.

Table 2. Annual rates of change of the Turnover Index in Industry: Domestic Market

Base year: 2015=100.0

Code	Division	Weights	February			Rate of change (%)	
			2021*	2020*	2019	2021/2020	2020/2019
OVERALL INDEX			93.10	98.25	99.32	-5.2	-1.1
B	MINING AND QUARRYING	100.00	64.23	53.94	69.13	19.1	-22.0
05-06-09	Mining of coal and lignite - Extraction of crude petroleum and natural gas - Mining support service activities	31.66	20.48	0.97	48.70	2001.9	-98.0
07	Mining of metal ores	12.83	96.02	81.77	73.00	17.4	12.0
08	Other mining and quarrying products	55.50	81.84	77.72	79.89	5.3	-2.7
C	MANUFACTURING	100.00	93.44	98.76	99.67	-5.4	-0.9
10	Food	28.50	93.95	98.87	95.72	-5.0	3.3
11	Beverages	4.86	66.12	83.55	76.43	-20.9	9.3
12	Tobacco products	0.51	201.25	148.80	138.82	35.2	7.2
13	Textiles	1.11	73.18	72.98	80.38	0.3	-9.2
14	Wearing apparel	1.77	46.67	71.91	78.41	-35.1	-8.3
15	Leather and related products	0.41	31.82	72.24	88.58	-56.0	-18.4
16	Wood and products of wood and cork, except furniture	0.96	85.09	97.89	85.86	-13.1	14.0
17	Paper and paper products	3.12	99.62	110.15	104.57	-9.6	5.3
18	Printing and reproduction of recorded products	1.63	65.26	77.60	87.06	-15.9	-10.9
19	Coke and refined petroleum products	24.90	69.09	84.19	106.79	-17.9	-21.2
20	Chemicals and chemical products	4.90	120.87	117.60	105.42	2.8	11.6
21	Basic pharmaceutical products and pharmaceutical preparations	3.85	170.67	132.55	111.78	28.8	18.6
22	Rubber and plastic products	3.31	109.53	97.51	92.25	12.3	5.7
23	Other non-metallic mineral products	3.31	98.33	106.29	99.61	-7.5	6.7
24	Basic metals	3.49	138.34	153.08	150.08	-9.6	2.0
25	Fabricated metal products, except machinery and equipment	4.25	105.39	99.47	95.79	5.9	3.8
26	Computers, electronic and optical products	0.40	87.61	135.86	90.29	-35.5	50.5
27	Electrical equipment	2.24	171.61	134.94	123.25	27.2	9.5
28	Machinery and equipment n.e.c.	1.46	99.98	104.35	85.88	-4.2	21.5
29	Motor vehicles, trailers and semi-trailers	0.27	87.44	113.37	66.95	-22.9	69.3
30	Other transport equipment	0.58	39.56	37.42	31.15	5.7	20.1
31	Furniture	1.35	79.42	93.24	80.45	-14.8	15.9
32	Other manufacturing	0.88	75.63	88.14	83.64	-14.2	5.4
33	Repair and installation of machinery and equipment	1.92	98.63	100.52	79.03	-1.9	27.2
MAIN INDUSTRIAL GROUPINGS							
1	Energy	24.89	68.63	83.30	106.05	-17.6	-21.5
2	Intermediate goods	25.73	112.65	112.37	105.41	0.3	6.6
3	Capital goods	7.19	98.07	99.48	85.96	-1.4	15.7
4	Consumer Durables	2.31	80.67	83.77	81.72	-3.7	2.5
5	Consumer Non-Durables	39.88	95.59	99.10	94.63	-3.5	4.7

* Provisional data

Note: The indices and the percentage changes are rounded up to two and one decimal digits, respectively, when published.

Table 3. Annual rates of change of the Turnover Index in Industry: Non-Domestic Market

Base year: 2015=100.0

Code	Division	Weights	February			Rate of change (%)	
			2021*	2020*	2019	2021/2020	2020/2019
OVERALL INDEX			117.58	114.98	120.46	2.3	-4.5
B	MINING AND QUARRYING	100.00	102.70	157.12	129.05	-34.6	21.8
05-06-09	Mining of coal and lignite - Extraction of crude petroleum and natural gas - Mining support service activities	7.53	0.00	0.00	0.00	-	-
07	Mining of metal ores	23.74	162.65	378.07	248.55	-57.0	52.1
08	Other mining and quarrying products	68.74	93.24	98.03	101.91	-4.9	-3.8
C	MANUFACTURING	100.00	117.84	114.24	120.31	3.1	-5.0
10	Food	13.27	131.21	120.51	110.70	8.9	8.9
11	Beverages	1.01	131.69	93.19	101.91	41.3	-8.6
12	Tobacco products	2.53	101.44	130.68	122.54	-22.4	6.6
13	Textiles	1.61	131.90	112.57	111.74	17.2	0.7
14	Wearing apparel	1.86	78.61	97.19	98.95	-19.1	-1.8
15	Leather and related products	0.19	53.79	168.70	156.57	-68.1	7.7
16	Wood and products of wood and cork, except furniture	0.24	143.19	130.23	131.57	10.0	-1.0
17	Paper and paper products	1.11	126.28	129.25	121.13	-2.3	6.7
18	Printing and reproduction of recorded products	0.26	233.28	249.70	163.90	-6.6	52.3
19	Coke and refined petroleum products	36.32	106.92	104.31	127.84	2.5	-18.4
20	Chemicals and chemical products	3.50	118.22	122.47	110.70	-3.5	10.6
21	Basic pharmaceutical products and pharmaceutical preparations	3.30	237.09	181.87	147.07	30.4	23.7
22	Rubber and plastic products	3.79	123.58	120.04	108.41	3.0	10.7
23	Other non-metallic mineral products	3.31	94.70	89.49	96.11	5.8	-6.9
24	Basic metals	14.54	121.11	123.58	124.08	-2.0	-0.4
25	Fabricated metal products, except machinery and equipment	5.03	72.94	75.84	71.70	-3.8	5.8
26	Computers, electronic and optical products	1.52	201.80	198.72	162.86	1.5	22.0
27	Electrical equipment	3.44	134.10	110.15	159.43	21.7	-30.9
28	Machinery and equipment n.e.c.	1.76	90.50	107.61	107.71	-15.9	-0.1
29	Motor vehicles, trailers and semi-trailers	0.14	105.88	97.62	100.58	8.5	-2.9
30	Other transport equipment	0.40	99.29	100.10	66.31	-0.8	51.0
31	Furniture	0.21	155.08	194.68	165.00	-20.3	18.0
32	Other manufacturing	0.22	119.72	131.97	134.89	-9.3	-2.2
33	Repair and installation of machinery and equipment	0.43	40.80	57.24	103.84	-28.7	-44.9
MAIN INDUSTRIAL GROUPINGS							
1	Energy	35.82	106.53	103.93	127.38	2.5	-18.4
2	Intermediate goods	33.33	118.77	118.93	121.67	-0.1	-2.3
3	Capital goods	6.62	91.47	100.96	91.34	-9.4	10.5
4	Consumer Durables	0.98	132.36	118.61	106.19	11.6	11.7
5	Consumer Non-Durables	23.25	139.70	130.19	116.95	7.3	11.3

* Provisional data

Note: The indices and the percentage changes are rounded up to two and one decimal digits, respectively, when published.

Table 4. Annual rates of change of the Turnover Index in Industry: Eurozone Countries

Base year: 2015=100.0

Code		Sections and main groupings	February			Rate of change (%)	
			2021*	2020*	2019	2021/2020	2020/2019
OVERALL INDEX			128.59	119.60	118.70	7.5	0.8
INDUSTRIAL SECTIONS							
B	MINING AND QUARRYING		140.62	168.70	163.30	-16.6	3.3
C	MANUFACTURING		128.35	118.62	117.81	8.2	0.7
MAIN INDUSTRIAL GROUPINGS							
1	Energy		93.93	78.47	70.34	19.7	11.6
2	Intermediate goods		126.87	129.41	140.13	-2.0	-7.7
3	Capital goods		109.45	113.24	134.41	-3.3	-15.7
4	Consumer Durables		198.31	199.12	157.46	-0.4	26.5
5	Consumer Non-Durables		155.16	135.25	124.27	14.7	8.8

* Provisional data

Table 5. Annual rates of change of the Turnover Index in Industry: Non-Eurozone Countries

Base year: 2015=100.0

CodeSections and main groupings		February			Rate of change (%)	
		2021*	2020*	2019	2021/2020	2020/2019
OVERALL INDEX		111.72	112.53	121.39	-0.7	-7.3
INDUSTRIAL SECTIONS						
B	MINING AND QUARRYING	77.81	149.52	106.56	-48.0	40.3
C	MANUFACTURING	112.27	111.93	121.63	0.3	-8.0
MAIN INDUSTRIAL GROUPINGS						
1	Energy	110.16	111.27	143.81	-1.0	-22.6
2	Intermediate goods	113.48	112.11	109.65	1.2	2.2
3	Capital goods	85.38	96.80	76.75	-11.8	26.1
4	Consumer Durables	86.82	63.01	70.79	37.8	-11.0
5	Consumer Non-Durables	124.67	125.27	109.83	-0.5	14.1

* Provisional data

Note: The indices and the percentage changes are rounded up to two and one decimal digits, respectively, when published.

Table 6. Monthly rate of change of the Turnover Index in Industry: Total Market

Base year: 2015=100.0

Code	Sections and main groupings	February 2021*	January 2021**	Rate of change (%) Feb. 2021/ Jan. 2021
OVERALL INDEX		101.34	87.05	16.4
INDUSTRIAL SECTIONS				
B	MINING AND QUARRYING	80.92	84.73	-4.5
C	MANUFACTURING	101.62	87.08	16.7
MAIN INDUSTRIAL GROUPINGS				
1	Energy	84.63	60.48	39.9
2	Intermediate goods	115.07	105.40	9.2
3	Capital goods	95.97	77.54	23.8
4	Consumer Durables	89.81	68.22	31.6
5	Consumer Non-Durables	105.66	97.03	8.9

Table 7. Monthly rate of change of the Turnover Index in Industry: Domestic Market

Base year: 2015=100.0

Code	Sections and main groupings	February 2021*	January 2021**	Rate of change (%) Feb. 2021/Jan. 2021
OVERALL INDEX		93.10	80.72	15.3
INDUSTRIAL SECTIONS				
B	MINING AND QUARRYING	64.23	55.38	16.0
C	MANUFACTURING	93.44	81.01	15.3
MAIN INDUSTRIAL GROUPINGS				
1	Energy	68.63	46.78	46.7
2	Intermediate goods	112.65	101.06	11.5
3	Capital goods	98.07	76.94	27.5
4	Consumer Durables	80.67	61.42	31.3
5	Consumer Non-Durables	95.59	90.57	5.5

Table 8. Monthly rate of change of the Turnover Index in Industry: Non-Domestic Market

Base year: 2015=100.0

Code	Sections and main groupings	February 2021*	January 2021**	Rate of change (%) Feb. 2021/ Jan. 2021
OVERALL INDEX		117.58	99.53	18.1
INDUSTRIAL SECTIONS				
B	MINING AND QUARRYING	102.70	123.04	-16.5
C	MANUFACTURING	117.84	99.11	18.9
MAIN INDUSTRIAL GROUPINGS				
1	Energy	106.53	79.22	34.5
2	Intermediate goods	118.77	111.99	6.1
3	Capital goods	91.47	78.84	16.0
4	Consumer Durables	132.36	99.89	32.5
5	Consumer Non-Durables	139.70	118.84	17.6

* Provisional data ** Revised data

Note: The indices and the percentage changes are rounded up to two and one decimal digits, respectively, when published.

Table 9. Monthly rate of change of the Turnover Index in Industry: Eurozone Countries

Base year: 2015=100.0

Code	Sections and main groupings	February 2021*	January 2021**	Rate of change (%) Feb. 2021/ Jan. 2021
OVERALL INDEX		128.59	108.37	18.7
INDUSTRIAL SECTIONS				
B	MINING AND QUARRYING	140.62	140.61	0.0
C	MANUFACTURING	128.35	107.72	19.2
MAIN INDUSTRIAL GROUPINGS				
1	Energy	93.93	54.33	72.9
2	Intermediate goods	126.87	124.35	2.0
3	Capital goods	109.45	107.97	1.4
4	Consumer Durables	198.31	131.82	50.4
5	Consumer Non-Durables	155.16	127.03	22.1

* Provisional data ** Revised data

Table 10. Monthly rate of change of the Turnover Index in Industry: Non-Eurozone Countries

Base year: 2015=100.0

Code	Sections and main groupings	February 2021*	January 2021**	Rate of change (%) Feb. 2021/ Jan. 2021
OVERALL INDEX		111.72	94.83	17.8
INDUSTRIAL SECTIONS				
B	MINING AND QUARRYING	77.81	111.51	-30.2
C	MANUFACTURING	112.27	94.56	18.7
MAIN INDUSTRIAL GROUPINGS				
1	Energy	110.16	86.39	27.5
2	Intermediate goods	113.48	103.93	9.2
3	Capital goods	85.38	68.97	23.8
4	Consumer Durables	86.82	77.85	11.5
5	Consumer Non-Durables	124.67	110.86	12.5

* Provisional data ** Revised data

Note: The indices and the percentage changes are rounded up to two and one decimal digits, respectively, when published.

Table 11. Evolution of the Turnover Index in Industry (y-o-y changes): Total Market

Base year: 2015=100.0

Year and month		Overall Index (Total Market)		Turnover Index in Industry in Domestic Market		Turnover Index in Industry in Non-Domestic Market	
		Index	Annual rate of change (%)	Index	Annual rate of change (%)	Index	Annual rate of change (%)
2020*:	2	103.89	-2.4	98.25	-1.1	114.98	-4.5
	3	102.05	-9.0	97.12	-8.5	111.77	-9.8
	4	79.79	-35.8	74.75	-35.9	89.71	-35.6
	5	87.00	-30.6	85.16	-28.8	90.61	-33.7
	6	110.84	-3.7	108.89	-2.2	114.68	-6.3
	7	110.88	-16.3	107.87	-18.1	116.81	-12.9
	8	87.36	-15.0	86.44	-18.7	89.18	-6.8
	9	103.35	-10.5	100.76	-8.8	108.47	-13.5
	10	97.97	-14.0	96.37	-13.4	101.12	-14.9
	11	103.26	-2.5	99.20	-4.9	111.25	1.9
	12	117.58	-3.6	115.11	-2.2	122.45	-6.1
2021*:	1	87.05	-12.3	80.72	-16.7	99.53	-4.3
	2	101.34	-2.4	93.10	-5.2	117.58	2.3

*Provisional data

Table 12. Evolution of the Turnover Index in Industry (y-o-y changes): Non-Domestic Market

Base year: 2015=100.0

Year and month		Overall Index (Non-Domestic Market)		Turnover Index in Industry in Eurozone Countries		Turnover Index in Industry in Non-Eurozone Countries	
		Index	Annual rate of change (%)	Index	Annual rate of change (%)	Index	Annual rate of change (%)
2020*:	2	114.98	-4.5	119.60	0.8	112.53	-7.3
	3	111.77	-9.8	132.72	9.5	100.63	-19.7
	4	89.71	-35.6	107.86	-18.2	80.06	-44.1
	5	90.61	-33.7	106.04	-23.2	82.41	-39.3
	6	114.68	-6.3	132.86	-3.7	105.02	-7.9
	7	116.81	-12.9	120.84	-5.7	114.67	-16.5
	8	89.18	-6.8	91.33	-0.4	88.05	-9.9
	9	108.47	-13.5	112.26	-7.1	106.46	-16.7
	10	101.12	-14.9	105.89	-7.3	98.59	-18.7
	11	111.25	1.9	112.54	-12.6	110.56	12.1
	12	122.45	-6.1	109.21	-11.5	129.49	-3.5
2021*:	1	99.53	-4.3	108.37	-6.6	94.83	-2.9
	2	117.58	2.3	128.59	7.5	111.72	-0.7

*Provisional data

Note: The indices and the percentage changes are rounded up to two and one decimal digits, respectively, when published.

Table 13. Average indices and rates of change (%) of the 12-month periods of Turnover Index in Industry: Total Market
Base year: 2015=100.0

Code	Division	Average Indices of 12-month periods			Rate of change (%)	
		Mar. 2020- Feb. 2021*	Mar. 2019- Feb. 2020*	Mar. 2018- Feb. 2019	2021/2020	2020/2019
	OVERALL INDEX	99.04	114.37	115.09	-13.4	-0.6
B	MINING AND QUARRYING	98.29	108.62	108.80	-9.5	-0.2
05-06-09	Mining of coal and lignite - Extraction of crude petroleum and natural gas - Mining support service activities	25.86	79.66	99.92	-67.5	-20.3
07	Mining of metal ores	183.72	166.73	143.09	10.2	16.5
08	Other mining and quarrying products	98.85	101.98	102.03	-3.1	-0.1
C	MANUFACTURING	99.05	114.45	115.17	-13.5	-0.6
10	Food	102.60	105.22	101.91	-2.5	3.2
11	Beverages	95.93	117.95	115.47	-18.7	2.1
12	Tobacco products	133.31	128.89	119.91	3.4	7.5
13	Textiles	97.61	108.34	106.39	-9.9	1.8
14	Wearing apparel	60.58	93.53	97.27	-35.2	-3.9
15	Leather and related products	47.48	88.85	89.81	-46.6	-1.1
16	Wood and products of wood and cork, except furniture	99.85	109.93	104.32	-9.2	5.4
17	Paper and paper products	112.02	115.36	113.17	-2.9	1.9
18	Printing and reproduction of recorded products	87.79	96.34	96.88	-8.9	-0.6
19	Coke and refined petroleum products	74.20	118.90	129.37	-37.6	-8.1
20	Chemicals and chemical products	120.39	118.96	112.27	1.2	6.0
21	Basic pharmaceutical products and pharmaceutical preparations	170.07	144.18	121.80	18.0	18.4
22	Rubber and plastic products	110.18	107.77	103.57	2.2	4.1
23	Other non-metallic mineral products	101.87	112.30	107.88	-9.3	4.1
24	Basic metals	121.49	125.10	138.00	-2.9	-9.3
25	Fabricated metal products, except machinery and equipment	98.35	101.25	101.12	-2.9	0.1
26	Computers, electronic and optical products	157.85	166.50	133.19	-5.2	25.0
27	Electrical equipment	129.24	127.59	117.82	1.3	8.3
28	Machinery and equipment n.e.c.	105.17	110.50	106.56	-4.8	3.7
29	Motor vehicles, trailers and semi-trailers	108.21	113.49	92.14	-4.6	23.2
30	Other transport equipment	61.93	63.95	67.77	-3.2	-5.6
31	Furniture	102.34	116.86	114.33	-12.4	2.2
32	Other manufacturing	86.18	106.45	99.99	-19.0	6.5
33	Repair and installation of machinery and equipment	96.73	99.66	92.03	-2.9	8.3
	MAIN INDUSTRIAL GROUPINGS					
1	Energy	73.88	118.70	129.17	-37.8	-8.1
2	Intermediate goods	112.71	115.40	115.51	-2.3	-0.1
3	Capital goods	102.92	106.93	100.46	-3.8	6.4
4	Consumer Durables	97.16	108.62	105.66	-10.6	2.8
5	Consumer Non-Durables	108.04	111.74	106.50	-3.3	4.9

*Provisional data

Note: The indices and the percentage changes are rounded up to two and one decimal digits, respectively, when published.

METHODOLOGICAL NOTES

Generally	The Industrial Turnover Index is an indicator of an enterprise's business cycle showing the monthly evolution of the market of goods and services in industry. The first compilation of the Turnover Index was completed by the Hellenic Statistical Authority in 2006, with base year 2000=100.0 and is compiled from 2000 onwards.
Purpose of the index	The purpose of this index is to measure the monthly activity of the industrial sector in terms of value. Turnover comprises the totals invoiced by the observation units during the reference period and corresponds to the market sales of goods or services supplied to third parties. The purposes and the characteristics of the Turnover Index apply, as well, to the indices for the distinction between domestic and non-domestic turnover.
Legal Framework	The compilation and publication of the Turnover Index is based on the framework of the implementation of Council Regulation (EC) No 1165/1998 concerning short-term statistics (STS-R), as well as Regulation (EC) No 1158/2005 of the European Parliament and of the Council amending Council Regulation (EC) No 1165/1998. Furthermore, this index is governed by Regulation (EC) No 1893/2006 of the European Parliament and of the Council, by Commission Regulation (EC) No 656/2007, by Regulation (EC) No 451/2008 of the Council, by Regulation (EU) No 2019/2152 of the European Parliament and of the Council on European business statistics, as well as Commission Implementing Regulation (EU) No 2020/1197 laying down technical specifications and arrangements pursuant to Regulation (EU) No 2019/2152.
Reference period	Month.
Base year	2015=100.0.
Revision	The latest revision of the Turnover Index in Industry (base year 2015=100.0) took place in the framework of Council Regulation (EC) No 1165/1998 concerning short-term statistics. In accordance with this regulation the index is revised every five years, in years ending in 0 or 5.
Statistical classifications	At the level of classes of economic activities, the statistical classification of economic activities NACE Rev. 2 of EU was used (Regulation No 1893/2006), while at the level of main industrial groupings, the allocation of two-digit and three-digit NACE Rev. 2 headings to categories of aggregate classification was used, in accordance with Commission Regulation No 656/2007.
Geographical coverage	The index covers the whole Country.
Coverage of economic activities	The Turnover Index in Industry is compiled for all activities listed in Sections B (mining and quarrying) and C (manufacturing) of the NACE Rev. 2 statistical classification.
Computation of the Index	The Turnover Index in Industry is a fixed base index. This index is calculated at a first stage at the four-digit level of economic activity and subsequently, with the implementation of appropriate weighting coefficients, the index is calculated at higher levels (three-level and two-level of economic activity) as well as at the level of Main Industrial Groupings (MIGs).
Data collection and processing in the context of the COVID-19 pandemic	The compilation of the indices was mainly based on data collected by the enterprises (via web-based application, email), as well as data from administrative sources. For February 2021 there was no significant change in the data collection compared to previous reference months.
Publication of data	The Turnover Index in Industry (2015=100.0) is released since August 2019 with June 2019 as first reference month. Data with base year 2015=100.0 are available from January 2000 onwards.
References	More information about the methodology concerning the compilation and calculation of the index and for the time series is available on the website of the Hellenic Statistical Authority (ELSTAT) (http://www.statistics.gr/en/statistics/-/publication/DKT24/).