



## PRESS RELEASE

### SURVEYS ON PRE-PRIMARY AND PRIMARY EDUCATION (KINDERGARTENS AND PRIMARY SCHOOLS) END OF SCHOOL YEAR 2017/2018

The Hellenic Statistical Authority (ELSTAT) announces data on Pre-Primary and Primary Education Statistics for the school year 2017/2018. On the basis of available survey data the following observations can be made:

- a) In the school year 2017/2018 compared with the school year 2016/2017, **school units** decreased by 0.5% in kindergartens and in primary schools (Tables 2 and 4, respectively);
- b) In the school year 2017/2018 compared with the school year 2016/2017, **teaching staff** increased by 2.4% in kindergartens and by 1.7% in primary schools (Tables 2 and 4, respectively);
- c) The **number of pupils** enrolled in the school year 2017/2018 compared with the corresponding number in the school year 2016/2017 recorded a 0.4% decrease in kindergartens and a 1.0% decrease in primary schools (Tables 3 and 5, respectively);
- d) The **number of graduates** in primary schools in the school year 2017/2018 compared with 2016/2017 increased by 1.6% (Table 6).
- e) The **ratio of teaching staff to pupils**, in the school year 2017/2018, was 1 to 10.3 in kindergartens and 1 to 9.3 in primary schools; in the school year 2016/2017 the corresponding ratio was 1 to 10.6 and 1 to 9.5, respectively (Tables 2,3,4 and 5).
- f) The **Region of Attiki** accounted for the largest share of pupils enrolled in pre-primary and primary education schools with 32.1% for kindergartens and 34.9% for primary schools (Graphs 2 and 3, respectively).

**Information on methodological issues:**

Division of Sectoral Statistics  
Section of Statistics on Education & Sports  
Head of the Section: Antonios Kritikos  
Tel: +30 213 135 2134, 2782  
Fax: +30 213 135 2780  
e-mail: a.kritikos@statistics.gr

**Information for data provision:**

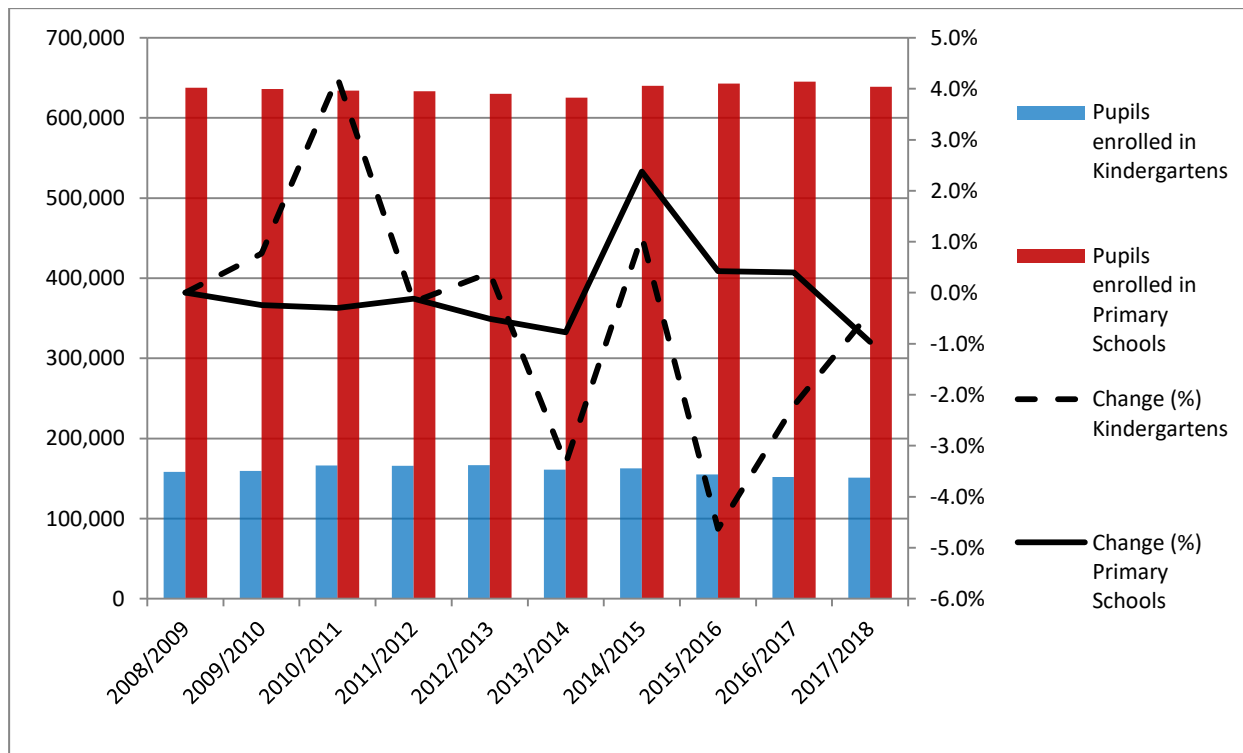
Tel. +30 213 135 2022, 2310  
Email. Data.dissem@statistics.gr

Table 1 and Graph 1 depict the evolution of the pupil population of kindergartens and primary schools during school years 2008/2009 to 2017/2018.

**Table 1**  
**Evolution of pupil population in Pre-Primary and Primary Education 2008/09 - 2017/18**

School Year	Number of Pupils	
	Kindergartens	Primary Schools
2008/2009	158,290	637,476
2009/2010	159,502	635,935
2010/2011	166,233	634,048
2011/2012	165,931	633,291
2012/2013	166,576	630,043
2013/2014	160,994	625,165
2014/2015	162,781	640,001
2015/2016	155,243	642,707
2016/2017	151,804	645,250
2017/2018	151,225	639,037

**Graph 1**  
**Evolution of pupil population in Pre-Primary and Primary Education 2008/09 - 2017/18**



## A. KINDERGARTENS

Tables 2 and 3 present data on the number of kindergartens, teaching staff and pupils enrolled.

**Table 2. School Units and Teaching Staff<sup>1</sup> by Type of School Unit and NUTS 2 Region (Kindergartens)**

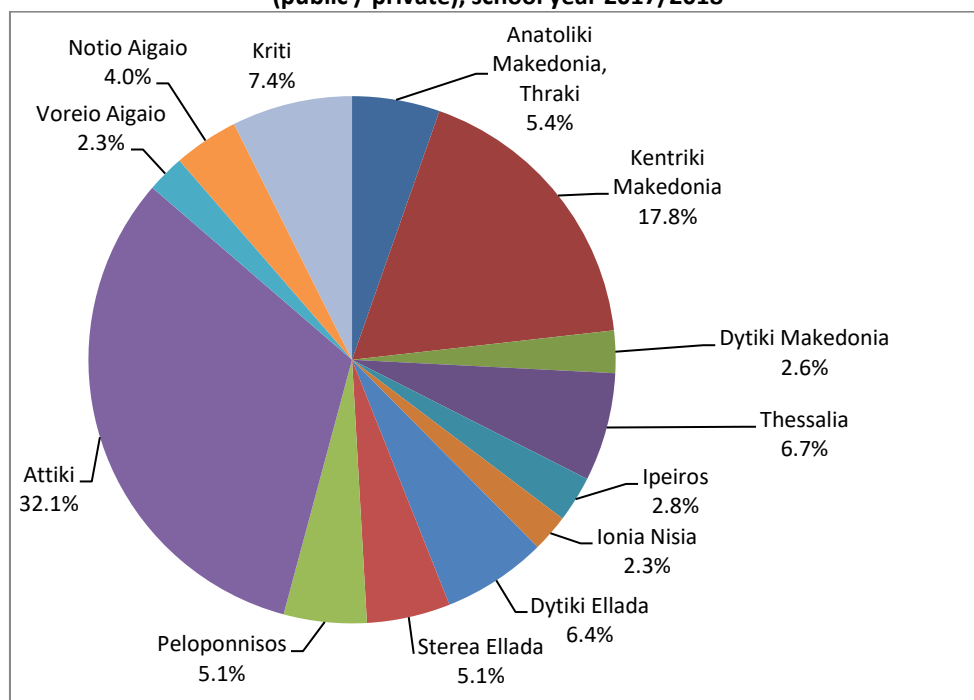
<i>By Type of School Unit</i>						
School Units	Number of School Units			Teaching Staff		
	2016/17	2017/18	Change (%)	2016/17	2017/18	Change (%)
Public	5,056	5,006	-1.0	13,494	13,754	1.9
Private	616	638	3.6	888	972	9.5
<b>TOTAL</b>	<b>5,672</b>	<b>5,644</b>	<b>-0.5</b>	<b>14,382</b>	<b>14,726</b>	<b>2.4</b>
<i>By Region</i>						
NUTS 2 Region	Number of School Units			Teaching Staff		
	2016/17	2017/18	Change (%)	2016/17	2017/18	Change (%)
Anatoliki Makedonia, Thraki	321	320	-0.3	803	811	1.0
Kentriki Makedonia	1,004	996	-0.8	2,627	2,667	1.5
Dytiki Makedonia	192	189	-1.6	457	451	-1.3
Thessalia	464	460	-0.9	1,019	1,041	2.2
Ipeiros	220	210	-4.5	487	482	-1.0
Ionia Nisia	146	145	-0.7	388	380	-2.1
Dytiki Ellada	423	415	-1.9	970	943	-2.8
Stereia Ellada	325	320	-1.5	745	743	-0.3
Peloponnisos	340	347	2.1	774	801	3.5
Attiki	1,437	1,440	0.2	3,902	4,103	5.2
Voreio Aigaio	145	149	2.8	408	432	5.9
Notio Aigaio	224	222	-0.9	569	606	6.5
Kriti	431	431	0.0	1,233	1,266	2.7
<b>TOTAL</b>	<b>5,672</b>	<b>5,644</b>	<b>-0.5</b>	<b>14,382</b>	<b>14,726</b>	<b>2.4</b>

<sup>1</sup> Teaching staff includes teachers classified as absent. "Absent teachers" are the teachers with a fixed post in the school unit, who are absent for more than 20 days (due to illness, training, maternity leave, etc) and their replacement is pending, as well as the teachers who are seconded to other administrative posts of the Ministry of Education and Religious Affairs or elsewhere.

**Table 3. Pupils enrolled by Type of School Unit and NUTS 2 Region (Kindergartens)**

<i>By Type of School Unit</i>									
School Units	Greece total			Males			Females		
	2016/17	2017/18	Change (%)	2016/17	2017/18	Change (%)	2016/17	2017/18	Change (%)
Public	137,470	136,308	-0.8	70,435	70,057	-0.5	67,035	66,251	-1.2
Private	14,334	14,917	4.1	7,398	7,671	3.7	6,936	7,246	4.5
<b>TOTAL</b>	<b>151,804</b>	<b>151,225</b>	<b>-0.4</b>	<b>77,833</b>	<b>77,728</b>	<b>-0.1</b>	<b>73,971</b>	<b>73,497</b>	<b>-0.6</b>
<i>By Region</i>									
NUTS 2 Region	Greece total			Males			Females		
	2016/17	2017/18	Change (%)	2016/17	2017/18	Change (%)	2016/17	2017/18	Change (%)
Anatoliki Makedonia, Thraki	8,306	8,136	-2.0	4,280	4,083	-4.6	4,026	4,053	0.7
Kentriki Makedonia	27,339	26,977	-1.3	13,938	13,840	-0.7	13,401	13,137	-2.0
Dytiki Makedonia	4,041	3,924	-2.9	2,077	2,028	-2.4	1,964	1,896	-3.5
Thessalia	10,508	10,057	-4.3	5,341	5,227	-2.1	5,167	4,830	-6.5
Ipeiros	4,343	4,265	-1.8	2,257	2,190	-3.0	2,086	2,075	-0.5
Ionia Nisia	3,493	3,459	-1.0	1,751	1,762	0.6	1,742	1,697	-2.6
Dytiki Ellada	10,339	9,684	-6.3	5,340	5,080	-4.9	4,999	4,604	-7.9
Stereia Ellada	7,909	7,748	-2.0	4,082	4,062	-0.5	3,827	3,686	-3.7
Peloponnisos	7,777	7,690	-1.1	4,002	3,936	-1.6	3,775	3,754	-0.6
Attiki	47,637	48,594	2.0	24,462	24,827	1.5	23,175	23,767	2.6
Voreio Aigaio	3,250	3,509	8.0	1,638	1,800	9.9	1,612	1,709	6.0
Notio Aigaio	5,837	6,012	3.0	2,998	3,094	3.2	2,839	2,918	2.8
Kriti	11,025	11,170	1.3	5,667	5,799	2.3	5,358	5,371	0.2
<b>TOTAL</b>	<b>151,804</b>	<b>151,225</b>	<b>-0.4</b>	<b>77,833</b>	<b>77,728</b>	<b>-0.1</b>	<b>73,971</b>	<b>73,497</b>	<b>-0.6</b>

**Graph 2**  
**Percentage distribution of pupils enrolled in Kindergartens, by NUTS 2 Region (public / private), school year 2017/2018**



## B. PRIMARY SCHOOLS

Tables 4, 5 and 6 present data on the number of primary schools, teaching staff, pupils enrolled and graduates.

**Tables 4. School Units and Teaching Staff<sup>2</sup> by Type of School Unit and NUTS 2 Region (Primary Schools)**

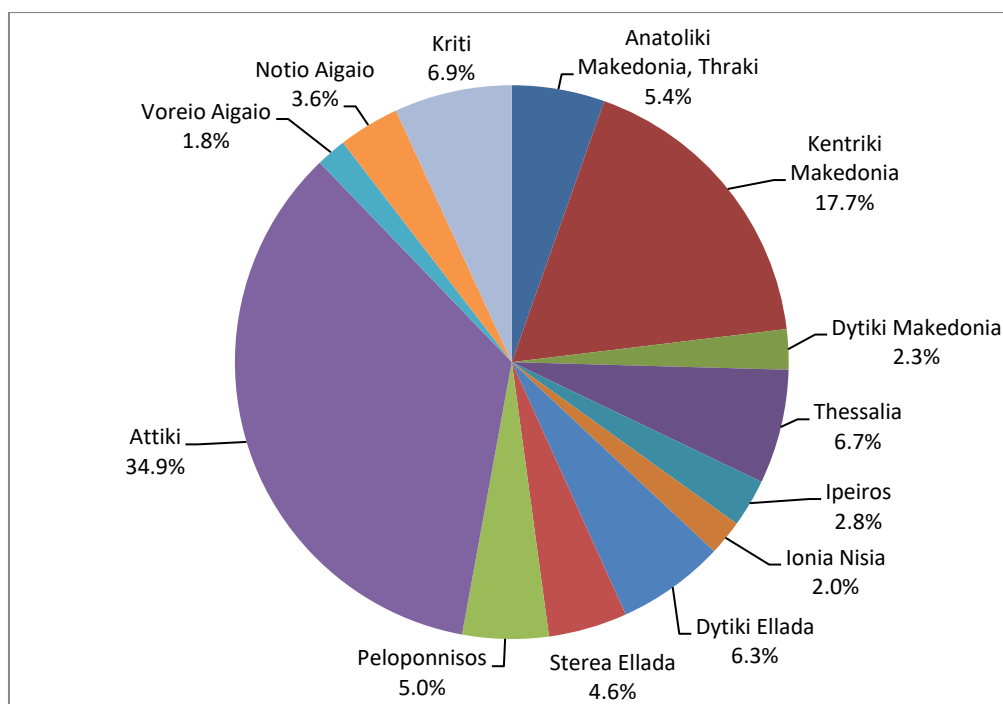
<i>By Type of School Unit</i>						
School Units	Number of School Units			Teaching Staff		
	2016/17	2017/18	Change (%)	2016/17	2017/18	Change (%)
Public	4,346	4,324	-0.5	64,463	65,427	1.5
Private	163	162	-0.6	3,345	3,553	6.2
<b>TOTAL</b>	<b>4,509</b>	<b>4,486</b>	<b>-0.5</b>	<b>67,808</b>	<b>68,980</b>	<b>1.7</b>
<i>By Region</i>						
NUTS 2 Region	Number of School Units			Teaching Staff		
	2016/17	2016/17	Change (%)	2016/17	2017/18	Change (%)
Anatoliki Makedonia, Thraki	350	346	-1.1	4,136	4,089	-1.1
Kentriki Makedonia	758	754	-0.5	12,094	12,249	1.3
Dytiki Makedonia	155	157	1.3	1,989	2,018	1.5
Thessalia	359	355	-1.1	4,604	4,647	0.9
Ipeiros	191	189	-1.0	2,177	2,160	-0.8
Ionia Nisia	105	103	-1.9	1,527	1,512	-1.0
Dytiki Ellada	382	377	-1.3	4,434	4,464	0.7
Stereia Ellada	295	292	-1.0	3,418	3,405	-0.4
Peloponnisos	267	266	-0.4	3,337	3,386	1.5
Attiki	1,006	1,007	0.1	21,283	22,012	3.4
Voreio Aigaio	136	136	0.0	1,553	1,587	2.2
Notio Aigaio	184	184	0.0	2,447	2,511	2.6
Kriti	321	320	-0.3	4,809	4,940	2.7
<b>TOTAL</b>	<b>4,509</b>	<b>4,486</b>	<b>-0.5</b>	<b>67,808</b>	<b>68,980</b>	<b>1.7</b>

<sup>2</sup> Teaching staff includes teachers classified as absent. "Absent teachers" are the teachers with a fixed post in the school unit, who are absent for more than 20 days (due to illness, training, maternity leave, etc) and their replacement is pending, as well as the teachers who are seconded to other administrative posts of the Ministry of Education and Religious Affairs or elsewhere.

**Table 5. Pupils enrolled by Type of School Unit and NUTS 2 Region (Primary Schools)**

<i>By Type of School Unit</i>									
School Units	Greece total			Males			Females		
	2016/17	2017/18	Change (%)	2016/17	2017/18	Change (%)	2016/17	2017/18	Change (%)
Public	609,414	601,601	-1.3	313,101	308,848	-1.4	296,313	292,753	-1.2
Private	35,836	37,436	4.5	18,402	19,305	4.9	17,434	18,131	4.0
<b>TOTAL</b>	<b>645,250</b>	<b>639,037</b>	<b>-1.0</b>	<b>331,503</b>	<b>328,153</b>	<b>-1.0</b>	<b>313,747</b>	<b>310,884</b>	<b>-0.9</b>
<i>By Region</i>									
NUTS 2 Region	Greece total			Males			Females		
	2016/17	2017/18	Change (%)	2016/17	2017/18	Change (%)	2016/17	2017/18	Change (%)
Anatoliki Makedonia, Thraki	35,589	34,648	-2.6	18,352	17,918	-2.4	17,237	16,730	-2.9
Kentriki Makedonia	114,302	112,918	-1.2	58,586	57,799	-1.3	55,716	55,119	-1.1
Dytiki Makedonia	15,541	14,994	-3.5	7,930	7,672	-3.3	7,611	7,322	-3.8
Thessalia	43,559	42,668	-2.0	22,275	21,811	-2.1	21,284	20,857	-2.0
Ipeiros	18,101	17,889	-1.2	9,422	9,314	-1.1	8,679	8,575	-1.2
Ionia Nisia	13,074	13,095	0.2	6,800	6,796	-0.1	6,274	6,299	0.4
Dytiki Ellada	40,521	40,172	-0.9	21,098	20,780	-1.5	19,423	19,392	-0.2
Stereia Ellada	29,661	29,410	-0.8	15,403	15,233	-1.1	14,258	14,177	-0.6
Peloponnisos	32,579	32,124	-1.4	16,727	16,509	-1.3	15,852	15,615	-1.5
Attiki	224,285	223,172	-0.5	115,027	114,551	-0.4	109,258	108,621	-0.6
Voreio Aigaio	11,330	11,250	-0.7	5,758	5,736	-0.4	5,572	5,514	-1.0
Notio Aigaio	22,651	22,769	0.5	11,583	11,567	-0.1	11,068	11,202	1.2
Kriti	44,057	43,928	-0.3	22,542	22,467	-0.3	21,515	21,461	-0.3
<b>TOTAL</b>	<b>645,250</b>	<b>639,037</b>	<b>-1.0</b>	<b>331,503</b>	<b>328,153</b>	<b>-1.0</b>	<b>313,747</b>	<b>310,884</b>	<b>-0.9</b>

**Graph 3**  
Percentage distribution of pupils enrolled in Primary Schools  
by NUTS 2 Region, school year 2017/2018



**Table 6. Graduates by Type of School Unit and NUTS 2 Region (Primary Schools)**

<i>By Type of School Unit</i>			
School Units	Graduates		
	2016/17	2017/18	Change (%)
Public	97,586	99,142	1.6
Private	5,430	5,511	1.5
<b>TOTAL</b>	<b>103,016</b>	<b>104,653</b>	<b>1.6</b>
<i>By Region</i>			
NUTS 2 Region	Graduates		
	2016/17	2017/18	Change (%)
Anatoliki Makedonia, Thraki	5,688	5,588	-1.8
Kentriki Makedonia	18,206	18,833	3.4
Dytiki Makedonia	2,592	2,520	-2.8
Thessalia	7,126	7,130	0.1
Ipeiros	2,909	3,028	4.1
Ionia Nisia	2,124	2,108	-0.8
Dytiki Ellada	6,522	6,413	-1.7
Stereia Ellada	4,759	4,886	2.7
Peloponnisos	5,330	5,333	0.1
Attiki	35,570	36,249	1.9
Voreio Aigaio	1,752	1,762	0.6
Notio Aigaio	3,613	3,645	0.9
Kriti	6,825	7,158	4.9
<b>TOTAL</b>	<b>103,016</b>	<b>104,653</b>	<b>1.6</b>

## EXPLANATORY NOTES

**Surveys on Pre-Primary and Primary Education** Pre-primary and Primary Education includes Kindergartens and Primary Schools. The relevant surveys are conducted on a yearly basis, with the aim of collecting data on the number of pupils enrolled, the school units and the number of teaching staff.

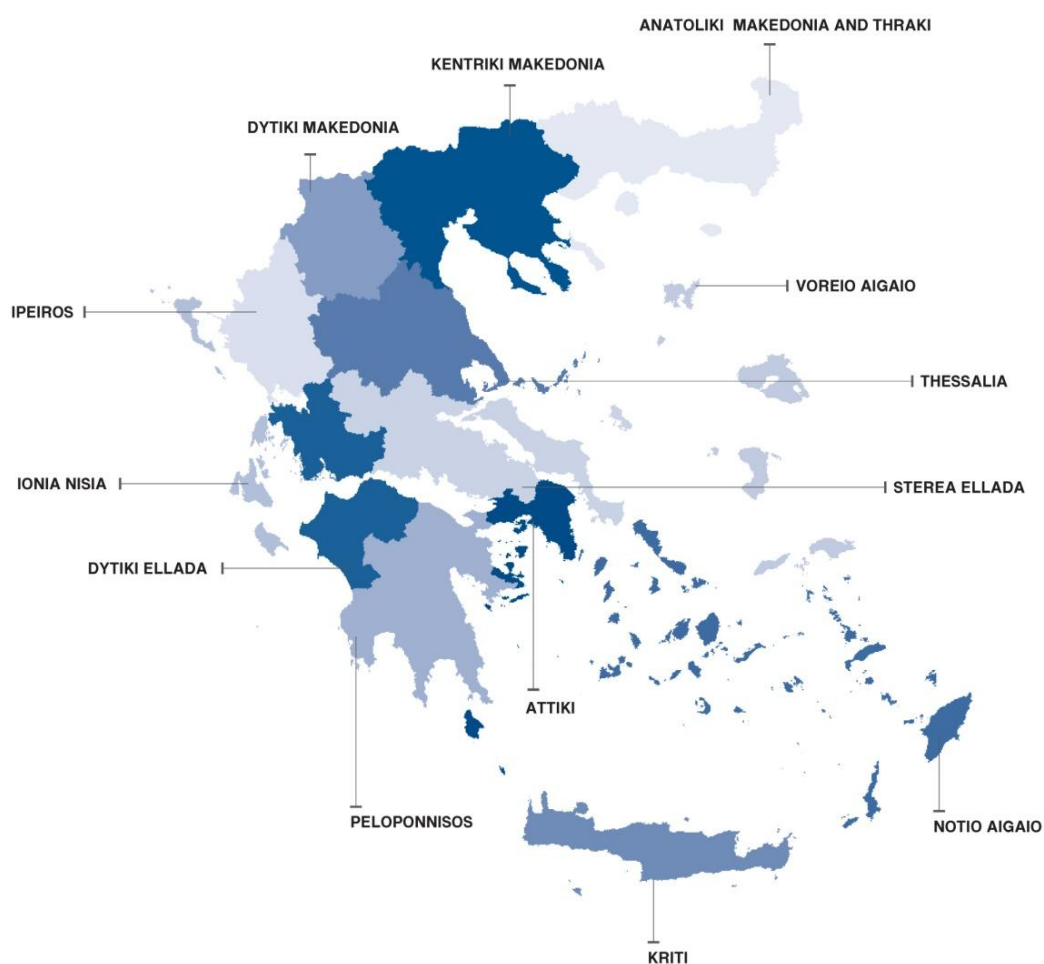
**Legal Framework** The surveys are conducted by virtue of Regulation 452/2008 of the European Parliament and the Council and implementing Regulation 912/2013 of the European Commission.

**Statistical Units** The statistical units are the school units.

**Coverage** Greece total.

**Geographical classification** The geographical classification is based on Nomenclature of Territorial Units for Statistics.

**Map of the 13 Regions (NUTS 2) of Greece**





<b>Dissemination of results</b>	The data are posted on a yearly basis on the website of ELSTAT and are published in a relevant Press Release.
<b>Reference period</b>	The data of the surveys refer to the end of school year 2017/2018. For comparability reasons, the data of the end of the previous school year 2016/2017 are also provided.
<b>Methodology and coverage</b>	<p>Until the school year 2013/2014, the surveys on Pre-Primary and Primary Education used to be census, yearly surveys and they were conducted by ELSTAT.</p> <p>For the school year 2014/2015 onwards, data of these surveys are collected as follows:</p> <ul style="list-style-type: none"> <li>– As regards public school units, the data are extracted from the “live” e-platform “MySchool” of the Ministry of Education and Religious Affairs.</li> <li>– As regards private school units, data are collected from the questionnaires that are sent to the relevant school units.</li> </ul>
<b>References</b>	<p>More information, such as tables with the survey results, samples of questionnaires, etc, on the Survey on Pre-Primary and Primary Education can be found on the webpage of ELSTAT <a href="http://www.statistics.gr">www.statistics.gr</a> and at the link: “Statistics” / Population and Social Conditions / Education / Primary Education / Kindergartens (Beginning – End of school year) or Primary Schools (Beginning – End of school year)”.</p>