



HELLENIC REPUBLIC
HELLENIC STATISTICAL AUTHORITY

Piraeus, 16 April 2020

PRESS RELEASE

STATISTICAL DATA ON ENTERPRISES UNDER SUSPENSION OF OPERATION DUE TO THE PANDEMIC OF THE CORONA VIRUS DISEASE 2019 (COVID-19)

The Hellenic Statistical Authority (ELSTAT) announces statistical data on enterprises under suspension of operation on the basis of state order, due to the pandemic of the corona virus disease 2019 (COVID-19).

The statistical data are the result of linking and processing of primary data from the Statistical Business Register of the year 2017, from administrative registers of the year 2019 and from administrative transactions files of the years 2017, 2019 and 2020 for enterprises classified in the activity classes for which the suspension of operation holds, according to the list of KAD (Codes of Activities) that have been published by the Ministry of Finance (corresponding link, available only in Greek, [KAD of closed enterprises](#)).

On the basis of these data:

The Region with the largest share of enterprises under suspension of operation is Notio Aigaio (34.4%) and the Region with the respective smallest share is Peloponnisos (10.7%). The Region with the largest share of persons employed in enterprises under suspension of operation is Notio Aigaio (56.7%) and the Region with the respective smallest share is Attiki (20.7%) (Table 1).

The activity classes with share of enterprises under suspension of operation greater than 80.0% are Accommodation (87.1%), Food and beverage service activities (80.9%), Education (88.8%) and Sports activities and amusement and recreation activities (86.7%). The corresponding share of persons employed in enterprises under suspension of operation are 94.2% for Accommodation, 89.6% for Food and beverage service activities, 89.9% for Education and 90.2% for Sports activities and amusement and recreation activities (Table 3).

Information on methodological issues:

Business Statistics Division

Registers and Big Enterprises Section

Head of Section: Adamantia Georgostathi

Tel.: +30 213 135 2043

mail: a.georgostathi@statistics.gr

Information on data provision:

Tel.: +30 213 135 2022, 2308, 2310

E-mail: data.dissem@statistics.gr

The following tables depict statistical data on:

- The number and the percentage of enterprises under suspension of operation and the respective employment figures, per Region (Table 1)
- The number of enterprises under suspension of operation and the respective employment figures, per employment size class (Table 2)
- The number and the percentage of enterprises under suspension of operation and the respective employment figures, per activity class (Table 3)
- The turnover from administrative sources of enterprises under suspension of operation, per activity class (Tables 4a and 4b)
- The number and the percentage of enterprises under suspension of operation with export activity and the respective export values, per activity class (Table 5)
- The number and the percentage of enterprises under suspension of operation that can conduct electronic transactions, per activity class (Table 6)
- The number of enterprises under suspension of operation with commence of activity in years 2018-2019, per activity class and per Region (Tables 7a and 7b)

In Map 1, a geospatial presentation of the share of enterprises under suspension of operation is provided, per Region of the Country, flagging the percentage of enterprises that can conduct electronic transactions.

In Map 2, a geospatial presentation of the share of enterprises under suspension of operation is provided, per Regional Unit of the Attiki Region, flagging the percentage of enterprises that can conduct electronic transactions.

Table 1. Total Number of Enterprises and Number of Enterprises under Suspension of Operation and respective Employment figures, per Region

REGION	NUMBER OF ENTERPRISES		Percentage (%) of enterprises under suspension of operation	TOTAL EMPLOYMENT		Percentage (%) of employment in enterprises under suspension of operation
	Total	Under suspension of operation		In the total of enterprises	In enterprises under suspension of operation	
Anatoliki Makedonia, Thraki	88,809	10,379	11.7	179,807	47,813	26.6
Kentriki Makedonia	237,032	31,811	13.4	600,270	157,543	26.2
Dytiki Makedonia	38,781	4,739	12.2	75,514	17,286	22.9
Ipeiros	45,716	7,195	15.7	98,792	27,685	28.0
Thessalia	112,336	13,196	11.7	218,330	54,185	24.8
Stereia Ellada	76,030	9,777	12.9	140,209	34,749	24.8
Ionia Nissia	38,276	11,402	29.8	88,534	42,829	48.4
Dytiki Ellada	97,639	10,802	11.1	182,058	39,739	21.8
Peloponnisos	112,884	12,115	10.7	191,734	47,429	24.7
Attiki	348,919	56,094	16.1	1,922,465	397,969	20.7
Voreio Aigaio	34,509	5,089	14.7	59,658	19,835	33.2
Notio Aigaio	49,223	16,929	34.4	154,809	87,721	56.7
Kriti	135,216	16,456	12.2	266,019	88,315	33.2
Total	1,415,370	205,984	14.6	4,178,199	1,063,098	25.4

Table 2. Number of Enterprises under Suspension of Operation and Employment, per Employment Size Classes

Employment Size Classes	Number of enterprises under suspension of operation	Employment of enterprises under suspension of operation
0-9 persons employed	179,573	400,899
10-49 persons employed	16,608	301,039
50-249 persons employed	1,302	118,419
More than 250 persons employed	255	242,741
Unknown ¹	8,246	
Total	205,984	1,063,098

¹ For the enterprises of unknown size class there is no information on the employment.

Table 3. Total Number of Enterprises and Number of Enterprises under Suspension of Operation and respective Employment, per Economic Activity Class (NACE Rev. 2)

ECONOMIC ACTIVITY		NUMBER OF ENTERPRISES		Percentage (%) of enterprises under suspension of operation	TOTAL EMPLOYMENT		Percentage (%) of employment in enterprises under suspension of operation
Code NACE Rev.2	Description	Total	Under suspension of operation		In the total of enterprises	In enterprises under suspension of operation	
47	Retail trade, except of motor vehicles and motorcycles	150,251	59,838	39.8	413,494	145,336	35.1
55	Accommodation	29,368	25,591	87.1	147,522	138,966	94.2
56	Food and beverage service activities	82,412	66,681	80.9	384,196	344,265	89.6
59	Motion picture, video and television programme production, sound recording and music publishing activities	1,770	180	10.2	8,716	1,196	13.7
71	Architectural and engineering activities; technical testing and analysis	49,246	250	0.5	62,310	1,549	2.5
77	Rental and leasing activities	5,901	1,326	22.5	13,699	3,372	24.6
82	Office administrative, office support and other business support activities	4,055	882	21.8	18,714	3,771	20.2
85	Education	20,517	18,222	88.8	345,915	311,117	89.9
88	Social work activities without accommodation	2,705	1,311	48.5	26,199	17,372	66.3
90	Creative, arts and entertainment activities	7,543	2,022	26.8	15,964	8,859	55.5
91	Libraries, archives, museums and other cultural activities	630	490	77.8	2,867	2,227	77.7
92	Gambling and betting activities	4,709	3,546	75.3	15,653	13,620	87.0
93	Sports activities and amusement and recreation activities	7,975	6,918	86.7	30,502	27,522	90.2
94	Activities of membership organisations	7,955	2,010	25.3	29,522	4,035	13.7
96	Other personal service activities	23,113	16,717	72.3	53,035	39,891	75.2
Total		1,415,370²	205,984	14.6	4,178,199³	1,063,098	2.4

² The total number of enterprises corresponds in all activities of the economy and it is not calculated as the sum of the enterprises of the divisions presented in table 3.

³ The total employment corresponds in all activities of the economy and it is not calculated as the sum of the total employment of the divisions presented in table 3.

Table 4a. Turnover (in thousand €) from Administrative Sources for the Total of Enterprises under Suspension of Operation, per Economic Activity Class (NACE Rev. 2)

ECONOMIC ACTIVITY		Turnover (in thousand €)	
Code NACE Rev.2	Description	1 st Quarter 2019	2 nd Quarter 2019
47	Retail trade, except of motor vehicles and motorcycles	1,977,151	2,537,197
55	Accommodation	266,260	1,778,933
56	Food and beverage service activities	932,560	1,369,141
59	Motion picture, video and television programme production, sound recording and music publishing activities	17,961	15,752
71	Architectural and engineering activities; technical testing and analysis	23,621	28,426
77	Rental and leasing activities	13,777	22,948
82	Office administrative, office support and other business support activities	62,789	46,698
85	Education	83,061	141,253
88	Social work activities without accommodation	12,538	11,399
90	Creative, arts and entertainment activities	37,675	58,885
91	Libraries, archives, museums and other cultural activities	22,147	27,757
92	Gambling and betting activities	1,077,587	1,058,726
93	Sports activities and amusement and recreation activities	107,688	127,500
94	Activities of membership organisations	3,305	4,235
96	Other personal service activities	78,035	100,334
Total		4,716,155	7,329,184

Table 4b. Turnover (in thousand €) from Administrative Sources for Enterprises under Suspension of Operation, obliged to double-entry accounting bookkeeping, per Economic Activity Class (NACE Rev. 2)

ECONOMIC ACTIVITY		Turnover (in thousand €)			
Code NACE Rev.2	Description	February 2020	February 2019	March 2019	April 2019
47	Retail trade, except of motor vehicles and motorcycles	415,634	403,551	396,293	506,430
55	Accommodation	69,703	65,215	94,261	209,346
56	Food and beverage service activities	94,561	83,788	97,745	101,033
59	Motion picture, video and television programme production, sound recording and music publishing activities	4,517	4,405	5,177	5,191
71	Architectural and engineering activities; technical testing and analysis	6,020	5,936	7,022	7,204
77	Rental and leasing activities	1,264	1,581	1,615	1,619
82	Office administrative, office support and other business support activities	22,400	18,796	18,041	9,094
85	Education	17,464	15,869	23,890	22,134
88	Social work activities without accommodation	2,521	4,613	2,485	3,310
90	Creative, arts and entertainment activities	7,982	5,600	11,799	12,482
91	Libraries, archives, museums and other cultural activities	2,406	1,550	3,354	4,245
92	Gambling and betting activities	356,832	332,559	367,922	338,904
93	Sports activities and amusement and recreation activities	17,337	19,813	24,366	21,483
94	Activities of membership organisations	232	214	173	715
96	Other personal service activities	2,782	3,139	3,498	4,090
Total		1,021,653	966,629	1,057,642	1,247,281

Table 5. Number of Enterprises and Export Value (in thousand €) for Enterprises under Suspension of Operation having export activity in the period January 2019 to February 2020, per Economic Activity Class (NACE Rev. 2)

ECONOMIC ACTIVITY		NUMBER OF ENTERPRISES UNDER SUSPENSION OF OPERATION		Percentage (%) of enterprises under suspension of operation having export activity	EXPORT VALUE (in thousand €)		
Code NACE Rev.2	Description	Total Number of Enterprises	Having export activity		2019	January 2020	February 2020
47	Retail trade, except of motor vehicles and motorcycles	59,838	2,343	3.9	473,444	32,748	31,733
55	Accommodation	25,591	141	0.6	4,709	170	166
56	Food and beverage service activities	66,681	177	0.3	3,715	273	255
59	Motion picture, video and television programme production, sound recording and music publishing activities	180					
71	Architectural and engineering activities; technical testing and analysis	250	*	*	*	*	*
77	Rental and leasing activities	1,326	36	2.7	318	10	44
82	Office administrative, office support and other business support activities	882	33	3.7	307	7	17
85	Education	18,222	67	0.4	646	17	39
88	Social work activities without accommodation	1,311	4	0.3	5		
90	Creative, arts and entertainment activities	2,022	34	1.7	227	5	124
91	Libraries, archives, museums and other cultural activities	490	6	1.2	33	2	
92	Gambling and betting activities	3,546	*	*	*	*	*
93	Sports activities and amusement and recreation activities	6,918	46	0.7	2,656	26	3
94	Activities of membership organisations	2,010	5	0.2	23		1
96	Other personal service activities	16,717	58	0.3	1,717	94	82
Total		205,984	2,954	1.4	488,486	33,475	32,464

*Confidential data

Table 6. Number and percentage of Enterprises under Suspension of Operation that can conduct Electronic Transactions, per Economic Activity Class (NACE Rev. 2)

ECONOMIC ACTIVITY		NUMBER OF ENTERPRISES UNDER SUSPENSION OF OPERATION		Percentage (%) of enterprises under suspension of operation able to conduct electronic transactions
Code NACE Rev.2	Description	Total Number of Enterprises	Able to conduct electronic transactions	
47	Retail trade, except of motor vehicles and motorcycles	59,838	1,514	2.5
55	Accommodation	25,591	1,042	4.1
56	Food and beverage service activities	66,681	349	0.5
59	Motion picture, video and television programme production, sound recording and music publishing activities	180	5	2.8
71	Architectural and engineering activities; technical testing and analysis	250	3	1.2
77	Rental and leasing activities	1,326	20	1.5
82	Office administrative, office support and other business support activities	882	23	2.6
85	Education	18,222	129	0.7
88	Social work activities without accommodation	1,311	4	0.3
90	Creative, arts and entertainment activities	2,022	23	1.1
91	Libraries, archives, museums and other cultural activities	490	6	1.2
92	Gambling and betting activities	3,546	22	0.6
93	Sports activities and amusement and recreation activities	6,918	49	0.7
94	Activities of membership organisations	2,010	5	0.2
96	Other personal service activities	16,717	84	0.5
Total		205,984	3,278	1.6

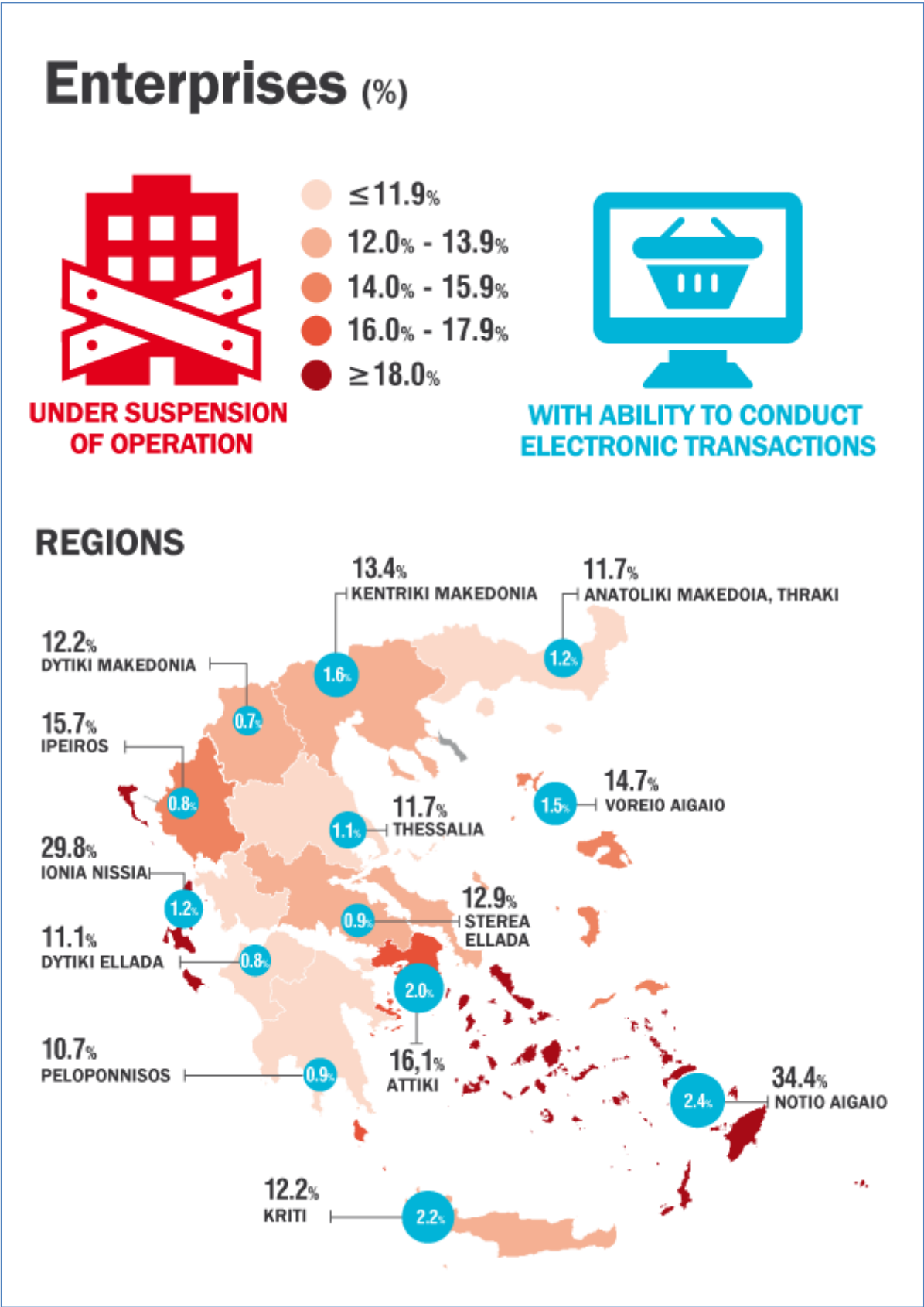
Table 7a. Number of Enterprises Under Suspension of Operation with Commence of Activity from 1.1.2018 onwards, per Economic Activity Class (NACE Rev. 2)

ECONOMIC ACTIVITY		Number of enterprises
Code NACE Rev.2	Description	
47	Retail trade, except of motor vehicles and motorcycles	5,508
55	Accommodation	4,212
56	Food and beverage service activities	12,116
59	Motion picture, video and television programme production, sound recording and music publishing activities	18
71	Architectural and engineering activities; technical testing and analysis	13
77	Rental and leasing activities	323
82	Office administrative, office support and other business support activities	301
85	Education	3,176
88	Social work activities without accommodation	181
90	Creative, arts and entertainment activities	526
91	Libraries, archives, museums and other cultural activities	89
92	Gambling and betting activities	587
93	Sports activities and amusement and recreation activities	1,961
94	Activities of membership organisations	961
96	Other personal service activities	3,039
Total		33,011

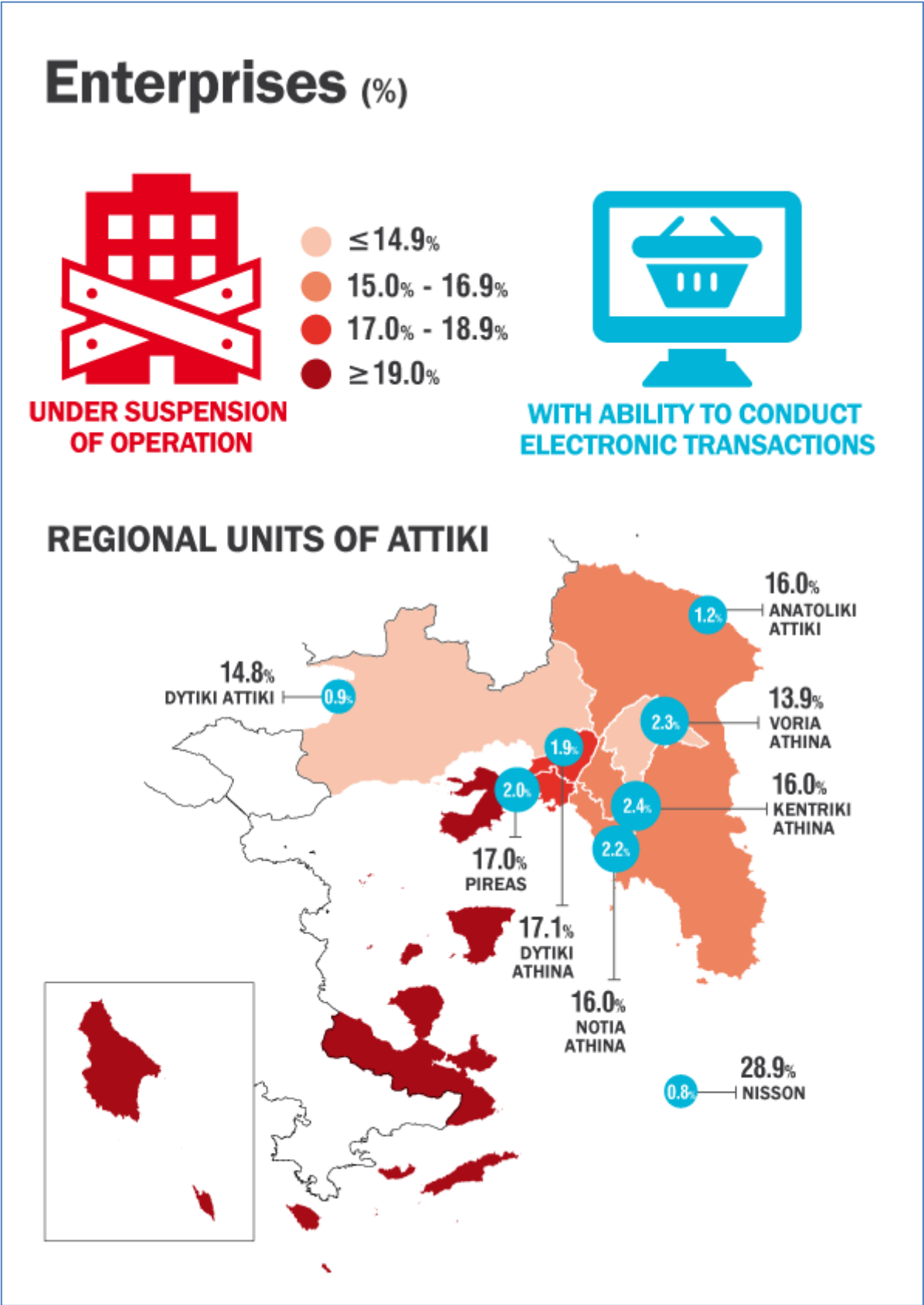
Table 7b. Number of Enterprises Under Suspension of Operation with Commence of Activity from 1.1.2018 onwards, per Region

REGION	Number of enterprises
Anatoliki Makedonia, Thraki	1,346
Kentriki Makedonia	5,131
Dytiki Makedonia	596
Ipeiros	1,058
Thessalia	1,775
Stereia Ellada	1,185
Ionia Nissia	1,450
Dytiki Ellada	1,665
Peloponnisos	1,590
Attiki	11,828
Voreio Aigaio	622
Notio Aigaio	2,596
Kriti	2,169
Total	33,011

Map 1. Percentage of Enterprises under Suspension of Operation to the Total of Enterprises, per Region of the Country and Percentage of Enterprises Under Suspension of Operation that can conduct Electronic Transactions, per Region



Map 2. Percentage of Enterprises under Suspension of Operation to the Total of Enterprises in Attiki Region, per Regional Unit of Attiki Region and Percentage of Enterprises Under Suspension of Operation that can conduct Electronic Transactions, per Regional Unit of Attiki Region



Generally The present Press Release provides statistical data on enterprises classified in the economic activity classes that are under suspension of operation on the basis of state order, due to the pandemic of the corona virus disease 2019 (COVID-19), (relevant link from the Ministry of Finance webpage, available only in Greek, [KAD of closed enterprises](#)).

These statistical data have been compiled on the basis of the linking and processing of primary data from the following sources:

- The most recent published Statistical Business Register of ELSTAT, of the reference year 2017.
- Administrative registers of enterprises, of the reference year 2019.
- Administrative transactions files (tax, etc) of the reference years 2017, 2019 and 2020.
- International Trade in Goods Statistics.

In particular, the following primary data have been used per source:

- Active enterprises, the economic activity class, the geographical location of headquarters and employment data from the Statistical Business Register of the reference year 2017.
- The population of legal units (VAT number) classified in KAD (Codes of Activity) under temporary suspension of operation and data on the commence of activity from administrative registers of enterprises of the year 2019.
- Income data, data on import-export values and data on the ability of conducting electronic transactions from administrative transaction files of the years 2017, 2019 and 2020. It has to be noted, that the ability of conducting electronic transactions is derived by the relevant declarations of enterprises to the administrative authorities.
- Data on import-export values from the International Trade in Goods Statistics.

It has to be noted, that after the process of matching the KAD codes to the classes of the Statistical Classification of Economic Activities (NACE Rev. 2), for which a total (referring to all the underlying activities) or a partial suspension of operation is applied for the enterprises that are classified to them on the basis of state order, follows the linking with the data of the Statistical Business Register of the year 2017, which is the main reference framework for the current Press Release. This linking leads to different results as regards the share of enterprises under suspension of operation per economic activity class NACE Rev.2, (mainly, because there are enterprises that were operating during the whole or part of the year 2017 and they were closed from 2018 onwards).

Statistical classifications For the economic activities, the European statistical classification of economic activities NACE Rev. 2 is used. It is noted, that an automatic transition from KAD to codes of NACE Rev. 2 classification was applied on the basis of valid correspondence rules.

For the geographical representation, the European statistical geographical classification NUTS is used (levels 2 and 3).

Reference Year Not applicable

Statistical unit The statistical unit is the legal unit (distinct VAT numbers).

Comparability The announced statistical data are comparable with the data of the most recent Statistical Business Register of ELSTAT, of the reference year 2017 (relevant link from the webpage of ELSTAT, where tables and information on the methodology applied are provided [Statistical Business Register](#)).

The data on the enterprises that can conduct electronic transactions are comparable with the data of the survey on the Use of Information and Communication Technologies and Electronic Commerce in enterprises (relevant link from the webpage of ELSTAT [ICT Survey](#)).

The data on total employment presented in the current Press Release are not directly comparable with the data of the Labour Force Survey, due to different definitions applied for the measurement of the surveyed variables.

ANNEX

List of Codes of National Activities (KAD), for which suspension of operation holds, which correspond to part of classes of specific divisions of the Statistical Classification of Economic Activities (NACE Rev. 2)

Statistical Classification of Economic Activities (NACE Rev. 2)		Codes of National Activities (KAD) for which suspension of operation holds		
Divisions	Classes	4dgt codes	6dgt, 8dgt codes	Exceptions from 4-digit KAD for which suspension of operation holds
47	4711			
47	4719	4719		47.19.10.01, 47.19.10.02
47	4721			
47	4722			
47	4723			
47	4724			
47	4725			
47	4726			
47	4729			
47	4730			
47	4741	4741		
47	4742	4742		
47	4743	4743		
47	4751	4751		
47	4752	4752		
47	4753	4753		
47	4754	4754		
47	4759	4759		
47	4761	4761		
47	4762		47.62.63	
47	4763	4763		
47	4764	4764		
47	4765	4765		
47	4771	4771		
47	4772	4772		
47	4773			
47	4774			
47	4775	4775		47.75.76.19
47	4776	4776		47.76.77.02, 47.76.77.04, 47.76.77.05, 47.76.77.06 47.76.77.07, 47.76.77.08, 47.76.77.09, 47.76.77.13 47.76.77.14, 47.76.77.15, 47.76.77.16, 47.76.77.17 47.76.77.18, 47.76.77.19, 47.76.77.20 47.76.78, 47.76.79
47	4777	4777		
47	4778	4778		47.78.84, 47.78.85 47.78.87, 47.78.88
47	4779	4779		
47	4781			
47	4782	4782		
47	4789	4789		
47	4791			
47	4799			
55	5510	5510		
55	5520	5520		
55	5530	5530		
55	5590			
56	5610	5610		
56	5621	5621		
56	5629		56.29.20.02	
56	5629		56.29.20.04	
56	5629		56.29.20.05	
56	5630	5630		
59	5911			
59	5912			
59	5913			
59	5914	5914		
59	5920			

Statistical Classification of Economic Activities (NACE Rev. 2)		Codes of National Activities (KAD) for which suspension of operation holds		
Divisions	Classes	4dgt codes	6dgt, 8dgt codes	Exceptions from 4-digit KAD for which suspension of operation holds
71	7111			
71	7112			
71	7120		71.20.14	
77	7711			
77	7712			
77	7721	7721		
77	7722	7722		
77	7729	7729		
77	7731			
77	7732			
77	7733			
77	7734			
77	7735			
77	7739			
77	7740			
82	8211			
82	8219			
82	8220			
82	8230	8230		
82	8291			
82	8292			
82	8299			
85	8510	8510		
85	8520	8520		
85	8531	8531		
85	8532	8532		
85	8541	8541		
85	8542	8542		
85	8551	8551		
85	8552	8552		
85	8553	8553		
85	8559	8559		
85	8560	8560		
88	8810	8810		
88	8891	8891		
88	8899			
90	9001			
90	9002	9002		
90	9003			
90	9004	9004		
91	9101	9101		
91	9102	9102		
91	9103	9103		
91	9104	9104		
92	9200	9200		92.00.14, 92.00.21
93	9311	9311		
93	9312	9312		
93	9313	9313		
93	9319	9319		
93	9321	9321		
93	9329	9329		

Statistical Classification of Economic Activities (NACE Rev. 2)		Codes of National Activities (KAD) for which suspension of operation holds		
Divisions	Classes	4dgt codes	6dgt, 8dgt codes	Exceptions from 4-digit KAD for which suspension of operation holds
94	9411			
94	9412			
94	9420			
94	9491			
94	9492			
94	9499		94.99.16.01	
94	9499		94.99.16.02	
96	9601			
96	9602	9602		
96	9603			
96	9604	9604		
96	9609		96.09.19.06	
96	9609		96.09.19.08	
96	9609		96.09.19.09	
96	9609		96.09.19.12	
96	9609		96.09.19.16	
96	9609		96.09.19.17	