



HELLENIC REPUBLIC



HELLENIC STATISTICAL AUTHORITY

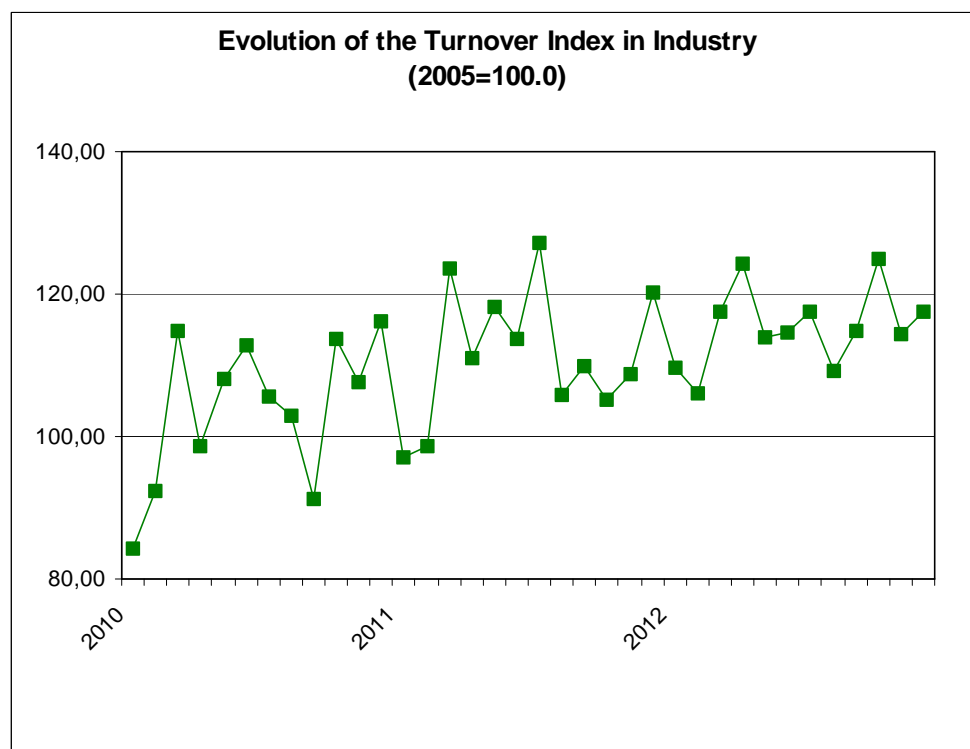
Piraeus, 19 February 2013

PRESS RELEASE

TURNOVER INDEX IN INDUSTRY: December 2012

The Turnover Index in Industry (both domestic and non-domestic market) in December 2012 compared with December 2011 recorded a decline of 2.5%. In December 2011, the annual rate of change of the Turnover Index in Industry was 2.4%.

The average Turnover Index in Industry for the 12-month period from January 2012 to December 2012, as compared to the 12-month period from January 2011 to December 2011, increased by 3.2%. In December 2011, the corresponding average rate of change of the Turnover Index in Industry was 7.1%.



Information:

Economic and Short-Term
Indicators Division

Production Indices Section

Diamantaki Aikaterini
Tel: 0030 213 1352122
Fax: 0030 213 1352738

The decrease of the Turnover Index in Industry by 2.5% in December 2012, compared with December 2011, was due to the annual changes as following:

- by Industrial Sections

- Mining and quarrying turnover increased by 7.7%.
- Manufacturing turnover decreased by 2.6%.

In addition, the decrease of the Turnover Index in Industry by 2.5% in December 2012, compared with December 2011, was due to the annual changes of the indices of the markets as following:

- The Turnover Index in Industry for the domestic market decreased by 23.5%.
- The Turnover Index in Industry for the non-domestic market increased by 40.8%.

The increase of the Turnover Index in Industry for the non-domestic market by 40.8% in December 2012, compared with December 2011, was due to the annual changes as following:

- The Turnover Index in Industry for the Eurozone countries decreased by 10.2%.
- The Turnover Index in Industry for the non-Eurozone countries increased by 67.2%.

Table 1: Annual rates of change of the Turnover Index in Industry (Total Market)

Base year: 2005=100.0

Branch code	Branch name	December			Rate of change (%)	
		2012*	2011	2010	2012/2011	2011/2010
	OVERALL INDEX	117.4	120.4	117.6	-2.5	2.4
B	MINING AND QUARRYING	113.1	105.0	85.7	7.7	22.5
05	Mining of coal and lignite	81.2	93.3	154.0	-13.0	-39.4
06	Extraction of crude petroleum and natural gas	776.9	450.4	0.0	72.5	—
07	Mining of metal ores	72.5	60.5	105.2	19.7	-42.4
08	Other mining and quarrying products	75.9	89.8	84.0	-15.5	6.9
C	MANUFACTURING	115.6	118.7	116.2	-2.6	2.1
10	Food	97.9	109.1	111.5	-10.2	-2.2
11	Beverages	81.3	87.4	99.4	-7.0	-12.1
12	Tobacco products	71.8	82.1	69.5	-12.5	18.2
13	Textiles	26.7	31.5	47.8	-15.2	-34.1
14	Wearing apparel	44.9	52.3	56.0	-14.2	-6.6
15	Leather and related products	27.6	31.8	41.2	-13.2	-22.9
16	Wood and cork	39.6	44.3	55.4	-10.5	-19.9
17	Paper and paper products	89.9	98.3	112.0	-8.5	-12.2
18	Printing and recording services	58.8	57.1	81.8	2.9	-30.1
19	Coke and refined petroleum products	228.5	212.4	178.9	7.6	18.7
20	Chemicals and chemical products	71.0	65.0	80.0	9.1	-18.7
21	Basic pharmaceutical products and pharmaceutical preparations	120.9	140.4	147.9	-13.9	-5.1
22	Rubber and plastic products	80.6	84.4	91.5	-4.6	-7.7
23	Other non-metallic mineral products	29.2	37.8	61.7	-22.6	-38.8
24	Basic metals	78.8	105.2	99.0	-25.1	6.3
25	Fabricated metal products	66.4	82.1	95.1	-19.2	-13.7
26	Computers, electronic and optical products	28.3	45.5	49.0	-37.7	-7.1
27	Electrical equipment	105.3	94.0	104.6	12.0	-10.2
28	Machinery and equipment n.e.c.	128.9	102.4	141.5	25.9	-27.7
29	Motor vehicles, trailers and semi-trailers	37.5	63.9	205.4	-41.3	-68.9
30	Other transport equipment	37.2	52.1	67.6	-28.5	-23.0
31	Furniture	38.5	52.8	74.4	-27.0	-29.1
32	Other manufactured goods	69.6	83.7	96.1	-16.8	-12.9
33	Repair and installation services of machinery and equipment	62.9	74.1	77.1	-15.2	-3.8
	MAIN INDUSTRIAL GROUPINGS					
1	Energy	229.8	212.9	178.3	8.0	19.4
2	Intermediate goods	72.0	82.2	89.6	-12.4	-8.3
3	Capital goods	65.8	76.8	97.8	-14.3	-21.5
4	Consumer Durables	41.9	53.9	67.5	-22.3	-20.1
5	Consumer Non-Durables	81.4	91.0	97.6	-10.6	-6.8

* Provisional data

Note:

1. The indices are calculated with infinite decimal figures and are rounded up to one decimal figure when published.
2. Percentage changes are calculated on the basis of indices with infinite decimal figures and are rounded up to one decimal figure when published.

Table 2: Annual rates of change of the Turnover Index in Industry for the Domestic Market

Base year: 2005=100.0

Branch code	Branch name	December			Rate of change (%)	
		2012*	2011	2010	2012/2011	2011/2010
	OVERALL INDEX	80.0	104.5	102.8	-23.5	1.6
B	MINING AND QUARRYING	113.8	90.6	82.9	25.5	9.4
05	Mining of coal and lignite	81.2	93.3	154.0	-13.0	-39.4
06	Extraction of crude petroleum and natural gas	776.9	450.4	0.0	72.5	—
07	Mining of metal ores	99.0	98.3	134.8	0.7	-27.1
08	Other mining and quarrying products	48.1	51.0	77.9	-5.6	-34.6
C	MANUFACTURING	78.3	103.2	101.7	-24.1	1.5
10	Food	96.9	100.8	111.2	-3.9	-9.3
11	Beverages	79.8	85.2	99.2	-6.3	-14.2
12	Tobacco products	51.1	55.7	57.3	-8.1	-2.8
13	Textiles	22.6	28.2	44.8	-19.7	-37.1
14	Wearing apparel	40.4	47.4	63.3	-14.7	-25.1
15	Leather and related products	30.4	30.4	39.4	0.1	-22.8
16	Wood and cork	32.2	40.4	50.1	-20.3	-19.3
17	Paper and paper products	87.6	93.3	110.9	-6.1	-15.9
18	Printing and recording services	57.2	55.3	79.6	3.5	-30.6
19	Coke and refined petroleum products	122.6	200.7	143.2	-38.9	40.2
20	Chemicals and chemical products	46.8	44.9	65.0	4.3	-31.0
21	Basic pharmaceutical products and pharmaceutical preparations	75.4	94.8	98.9	-20.5	-4.2
22	Rubber and plastic products	56.9	61.6	72.7	-7.6	-15.3
23	Other non-metallic mineral products	21.4	32.6	60.9	-34.2	-46.5
24	Basic metals	52.3	49.3	67.8	6.2	-27.4
25	Fabricated metal products	56.6	71.1	89.1	-20.3	-20.2
26	Computers, electronic and optical products	7.1	12.8	35.2	-44.6	-63.5
27	Electrical equipment	98.1	69.2	89.4	41.8	-22.6
28	Machinery and equipment n.e.c.	51.2	60.4	79.5	-15.3	-24.0
29	Motor vehicles, trailers and semi-trailers	24.0	53.4	102.5	-55.0	-47.9
30	Other transport equipment	3.9	13.0	180.4	-69.7	-92.8
31	Furniture	35.1	48.8	71.5	-28.0	-31.8
32	Other manufactured goods	51.5	67.0	78.4	-23.1	-14.6
33	Repair and installation services of machinery and equipment	62.9	74.1	77.1	-15.2	-3.8
	MAIN INDUSTRIAL GROUPINGS					
1	Energy	125.2	201.4	142.6	-37.8	41.2
2	Intermediate goods	55.4	57.2	75.6	-3.2	-24.3
3	Capital goods	47.7	61.1	101.7	-22.0	-39.9
4	Consumer Durables	35.6	50.0	69.1	-28.8	-27.6
5	Consumer Non-Durables	75.3	80.8	94.1	-6.7	-14.2

* Provisional data

Note:

1. The indices are calculated with infinite decimal figures and are rounded up to one decimal figure when published.
2. Percentage changes are calculated on the basis of indices with infinite decimal figures and are rounded up to one decimal figure when published.

Table 3: Annual rates of change of the Turnover Index in Industry for the Non - Domestic Market

Base year: 2005=100.0

Branch code	Branch name	December			Rate of change (%)	
		2012*	2011	2010	2012/2011	2011/2010
	OVERALL INDEX	233.1	165.6	168.9	40.8	-2.0
B	MINING AND QUARRYING	101.3	123.1	87.5	-17.7	40.8
05	Mining of coal and lignite	0.0	0.0	0.0	0.0	0.0
06	Extraction of crude petroleum and natural gas	0.0	0.0	0.0	0.0	0.0
07	Mining of metal ores	48.7	26.7	78.7	82.4	-66.0
08	Other mining and quarrying products	115.9	150.0	89.9	-22.7	66.8
C	MANUFACTURING	230.8	162.9	167.0	41.7	-2.5
10	Food	100.4	151.0	116.8	-33.5	29.3
11	Beverages	101.2	117.2	103.9	-13.7	12.8
12	Tobacco products	126.8	152.4	101.9	-16.8	49.5
13	Textiles	31.7	36.5	53.4	-13.3	-31.6
14	Wearing apparel	49.7	57.7	50.7	-13.7	13.6
15	Leather and related products	2.0	43.8	57.4	-95.5	-23.8
16	Wood and cork	89.4	70.6	91.0	26.6	-22.5
17	Paper and paper products	109.1	140.5	120.2	-22.3	16.9
18	Printing and recording services	210.2	231.3	280.7	-9.1	-17.6
19	Coke and refined petroleum products	572.4	250.4	295.0	128.6	-15.1
20	Chemicals and chemical products	127.2	111.6	114.6	14.0	-2.7
21	Basic pharmaceutical products and pharmaceutical preparations	348.9	369.1	393.6	-5.5	-6.2
22	Rubber and plastic products	125.6	129.8	129.5	-3.2	0.3
23	Other non-metallic mineral products	81.1	67.3	65.4	20.5	3.0
24	Basic metals	105.9	161.6	130.5	-34.5	23.8
25	Fabricated metal products	104.1	126.0	118.1	-17.4	6.7
26	Computers, electronic and optical products	41.5	63.7	56.2	-34.9	13.3
27	Electrical equipment	112.4	121.4	120.4	-7.4	0.8
28	Machinery and equipment n.e.c.	237.1	162.8	217.8	45.7	-25.3
29	Motor vehicles, trailers and semi-trailers	106.1	97.9	1600.4	8.4	-93.9
30	Other transport equipment	56.8	65.9	66.6	-13.8	-1.0
31	Furniture	179.6	216.5	192.0	-17.0	12.8
32	Other manufactured goods	138.3	150.2	180.7	-7.9	-16.9
33	Repair and installation services of machinery and equipment	0.0	0.0	0.0	0.0	0.0
	MAIN INDUSTRIAL GROUPINGS					
1	Energy	572.4	250.4	295.0	128.6	-15.1
2	Intermediate goods	105.9	133.7	118.5	-20.8	12.8
3	Capital goods	125.6	119.2	175.5	5.4	-32.1
4	Consumer Durables	63.6	68.8	62.1	-7.6	10.8
5	Consumer Non-Durables	102.6	131.9	111.9	-22.2	17.9

* Provisional data

Note:

1. The indices are calculated with infinite decimal figures and are rounded up to one decimal figure when published.
2. Percentage changes are calculated on the basis of indices with infinite decimal figures and are rounded up to one decimal figure when published.

Table 4: Annual rates of change of the Turnover Index in Industry for the Eurozone Countries

Base year: 2005=100.0

Branch code	Branch name	December			Rate of change (%)	
		2012*	2011	2010	2012/2011	2011/2010
	OVERALL INDEX	141.5	157.6	149.0	-10.2	5.7
	INDUSTRIAL SECTIONS					
B	MINING AND QUARRYING	39.6	154.7	80.4	-74.4	92.5
C	MANUFACTURING	140.4	153.3	146.8	-8.4	4.4
	MAIN INDUSTRIAL GROUPINGS					
1	Energy	1938.7	732.4	1528.1	164.7	-52.1
2	Intermediate goods	107.1	149.5	129.9	-28.4	15.1
3	Capital goods	33.1	44.3	40.0	-25.2	10.6
4	Consumer Durables	221.9	226.4	178.7	-2.0	26.7
5	Consumer Non-Durables	88.9	139.8	102.0	-36.4	37.1

* Provisional data

Table 5: Annual rates of change of the Turnover Index in Industry for the Non - Eurozone Countries

Base year: 2005=100.0

Branch code	Branch name	December			Rate of change (%)	
		2012*	2011	2010	2012/2011	2011/2010
	OVERALL INDEX	293.3	175.5	180.4	67.2	-2.7
	INDUSTRIAL SECTIONS					
B	MINING AND QUARRYING	154.9	95.3	92.7	62.6	2.8
C	MANUFACTURING	290.4	173.7	178.6	67.2	-2.8
	MAIN INDUSTRIAL GROUPINGS					
1	Energy	531.3	236.0	258.0	125.2	-8.6
2	Intermediate goods	111.4	124.3	111.4	-10.4	11.6
3	Capital goods	242.9	216.3	261.4	12.3	-17.3
4	Consumer Durables	40.5	66.6	81.1	-39.2	-17.9
5	Consumer Non-Durables	121.1	123.0	117.7	-1.5	4.5

* Provisional data

Note:

1. The indices are calculated with infinite decimal figures and are rounded up to one decimal figure when published.
2. Percentage changes are calculated on the basis of indices with infinite decimal figures and are rounded up to one decimal figure when published.

Table 6: Evolution of the Turnover Index in Industry (Total Market)**Base year: 2005=100.0**

Year-month	Overall Index (Total Market)		Turnover Index in Industry for the Domestic Market		Turnover Index in Industry for the Non - Domestic Market	
	Index	Annual rate of change (%)	Index	Annual rate of change (%)	Index	Annual rate of change (%)
2011 XII	120.4	2.4	104.5	1.6	165.6	-2.0
2012 I	109.7	12.8	88.3	3.2	175.2	33.3
II	106.0	7.5	85.1	-5.1	169.4	37.2
III	117.5	-4.8	91.9	-7.8	194.9	-0.1
IV	124.4	12.0	99.4	7.7	201.0	20.1
V	114.0	-3.7	86.1	-5.0	198.4	-2.1
VI	114.6	0.6	88.9	-3.8	192.0	7.6
VII	117.6	-7.6	95.6	-6.9	183.1	-8.8
VIII	109.2	2.8	86.5	-5.3	178.9	18.7
XI	114.8	4.1	83.4	-8.7	211.0	27.3
X	124.9	18.7	90.6	6.2	229.7	39.8
XI	114.5	5.1	77.3	-18.8	228.8	55.6
XII*	117.4	-2.5	80.0	-23.5	233.1	40.8

*Provisional data

Table 7: Evolution of the Turnover Index in Industry for the Non – Domestic Market**Base year: 2005=100.0**

Year-month	Overall Index (Non - Domestic Market)		Turnover Index in Industry for Eurozone Countries		Turnover Index in Industry for Non - Eurozone Countries	
	Index	Annual rate of change (%)	Index	Annual rate of change (%)	Index	Annual rate of change (%)
2011 XII	165.6	-2.0	157.6	5.7	175.5	-2.7
2012 I	175.2	33.3	125.5	7.8	205.1	45.6
II	169.4	37.2	131.9	-13.6	196.1	78.9
III	194.9	-0.1	168.5	4.2	216.4	-1.0
IV	201.0	20.1	139.5	-14.0	240.5	39.4
V	198.4	-2.1	172.0	3.9	216.6	-4.9
VI	192.0	7.6	160.0	0.4	214.2	11.4
VII	183.1	-8.8	147.6	-2.2	205.0	-11.7
VIII	178.9	18.7	125.2	-6.2	211.6	30.1
XI	211.0	27.3	150.1	3.7	251.1	38.7
X	229.7	39.8	171.6	8.1	268.3	58.8
XI	228.8	55.6	194.1	29.2	253.7	72.6
XII*	233.1	40.8	141.5	-10.2	293.3	67.2

*Provisional data

Note: 1. The indices are calculated with infinite decimal figures and are rounded up to one decimal figure when published.
2. Percentage changes are calculated on the basis of indices with infinite decimal figures and are rounded up to one decimal figure when published.

Table 8: Average indices and rates of change (%) of the 12-month periods of Turnover Index in Industry (Total Market)

		Base year: 2005=100.0				
Branch code	Branch name	Average Indices of 12-month periods			Rate of change (%) 2012/2011	Rate of change (%) 2011/2010
		Jan. 2012- Dec. 2012*	Jan.2011- Dec. 2011	Jan. 2010- Dec. 2010		
	OVERALL INDEX	115.4	111.8	104.3	3.2	7.1
B	MINING AND QUARRYING	88.2	98.4	103.1	-10.4	-4.6
05	Mining of coal and lignite	56.0	134.5	149.9	-58.4	-10.3
06	Extraction of crude petroleum and natural gas	193.4	210.1	175.0	-8.0	20.1
07	Mining of metal ores	79.8	80.6	76.7	-0.9	5.1
08	Other mining and quarrying products	84.3	91.9	100.4	-8.3	-8.5
C	MANUFACTURING	113.9	110.2	102.7	3.4	7.3
10	Food	105.9	108.0	108.6	-2.0	-0.5
11	Beverages	88.8	96.7	106.6	-8.2	-9.2
12	Tobacco products	74.5	80.7	76.5	-7.7	5.5
13	Textiles	33.7	42.9	50.0	-21.4	-14.1
14	Wearing apparel	41.0	49.2	59.0	-16.7	-16.7
15	Leather and related products	25.8	49.1	61.3	-47.5	-19.9
16	Wood and cork	39.2	46.5	61.0	-15.8	-23.7
17	Paper and paper products	101.3	109.7	113.7	-7.6	-3.6
18	Printing and recording services	49.3	58.6	79.8	-15.9	-26.6
19	Coke and refined petroleum products	204.7	171.1	136.6	19.7	25.2
20	Chemicals and chemical products	84.9	92.4	92.0	-8.1	0.5
21	Basic pharmaceutical products and pharmaceutical preparations	126.0	127.8	133.6	-1.4	-4.3
22	Rubber and plastic products	94.7	98.6	96.5	-3.9	2.2
23	Other non-metallic mineral products	37.9	47.7	72.5	-20.6	-34.2
24	Basic metals	100.7	116.0	98.6	-13.2	17.7
25	Fabricated metal products	72.7	81.6	81.9	-10.9	-0.4
26	Computers, electronic and optical products	32.2	34.3	43.7	-6.2	-21.5
27	Electrical equipment	93.7	85.0	89.5	10.3	-5.1
28	Machinery and equipment n.e.c.	75.2	82.5	82.3	-8.8	0.3
29	Motor vehicles, trailers and semi-trailers	41.7	48.2	63.8	-13.5	-24.5
30	Other transport equipment	30.4	41.0	51.1	-25.9	-19.7
31	Furniture	40.3	57.9	74.2	-30.4	-22.0
32	Other manufactured goods	63.7	71.8	77.6	-11.2	-7.5
33	Repair and installation services of machinery and equipment	45.5	52.8	54.5	-13.8	-3.1
	MAIN INDUSTRIAL GROUPINGS					
1	Energy	204.3	171.1	136.8	19.4	25.1
2	Intermediate goods	84.3	93.2	92.5	-9.6	0.8
3	Capital goods	48.5	57.1	60.5	-15.0	-5.5
4	Consumer Durables	47.4	57.6	68.3	-17.7	-15.7
5	Consumer Non-Durables	88.0	92.3	98.3	-4.7	-6.1

*Provisional data

Note: 1. The indices are calculated with infinite decimal figures and are rounded up to one decimal figure when published.
2. Percentage changes are calculated on the basis of indices with infinite decimal figures and are rounded up to one decimal figure when published.

METHODOLOGICAL NOTES

Generally	The Turnover Index is being compiled since 2006.
Purpose of the index	The purpose of this index is to measure the monthly activity of the industrial sector in terms of value. Turnover comprises the totals invoiced (without VAT) by the observation units during the reference period and corresponds to the market sales of goods or services supplied to third parties. The purposes and the characteristics of the Turnover Index apply, as well, to the indices for the distinction between domestic and non-domestic turnover.
Legal basis	The compilation and publication of the Turnover Index is based on the framework of requirements of the Council Regulation (EC) No 1165/98 concerning short-term statistics (STS-R), as well as the amendment Regulation (EC) No 1158/05 of the European Parliament and Council, amending the Council Regulation (EC) No 1165/98. Furthermore, this index is governed by the Regulation (EEC) No.1893/2006 of the European Parliament and of the Council, by the Commission Regulation (EEC) No.656/2007 and by the Regulation (EEC) No.451/2008 of the Council.
Reference period	Month
Base year	2005=100.0.
Revision	The last revision of the Turnover Index in Industry with base year 2005=100.0 is done in the framework of the Short – Term Statistics (STS) Council Regulation (EC) No 1165/98 concerning short-term statistics. According to this regulation the index in question is updated every five years, in years ending in 0 or 5.
Statistical classifications	At the level of categories of economic activities the new Eurostat classification NACE Rev. 2 was used (Regulation 1893/2006), while at the level of main industrial groups, the allocation of two-digit and three-digit NACE Rev. 2 headings to categories of aggregate classification was used, in accordance with the Commission Regulation 656/2007. At product level, the new Eurostat classification CPA 2008 was used, according to the Council Regulation 451/2008.
Geographical coverage	The Index covers the whole country.
Coverage of economic activities	The Turnover Index in Industry covers the whole country and is compiled for all activities listed in Sections C (mining and quarrying) and D (manufacturing) of the NACE Rev.2 classification.
Computation of the Index	The Turnover Index in Industry is a fixed base index. This index is calculated initially at the four-digit level of economic activity and subsequently, with the implementation of appropriate weighting coefficients, the index is calculated at higher levels (three-level, two-level and one-level of economic activity) or at the level of Main Industrial Groupings (MIGs).
Publication of data	The Turnover Index with base year 2005=100.0 is being released since April 2009 with January 2009 as first reference month. Data with base year 2005=100.0 are available from January 2000 onwards.
References	More information about the methodology concerning the compilation and calculation of the index and for the time series is available on the Hellenic Statistical Authority (ELSTAT) website (www.statistics.gr).