



HELLENIC REPUBLIC



HELLENIC STATISTICAL AUTHORITY

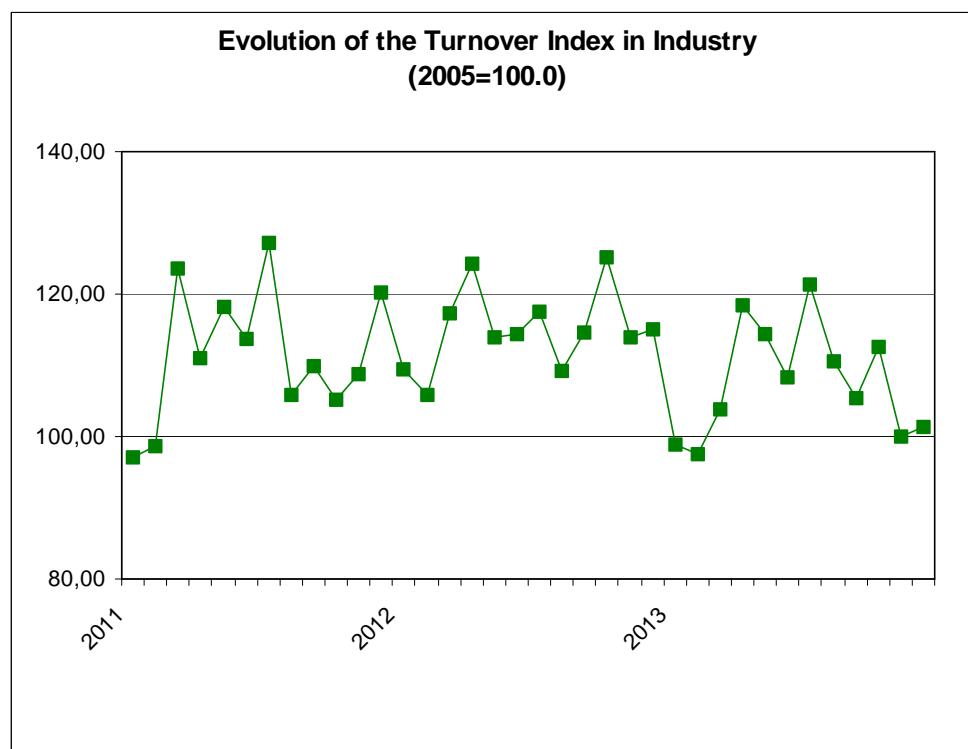
Piraeus, 19 February 2014

## PRESS RELEASE

### TURNOVER INDEX IN INDUSTRY: December 2013

The Turnover Index in Industry (both domestic and non-domestic market) in December 2013 compared with December 2012 recorded a decline of 11.8%. In December 2012, the annual rate of change of the Turnover Index in Industry was – 4.5%.

The average Turnover Index in Industry for the 12-month period from January 2013 to December 2013, as compared to the 12-month period from January 2012 to December 2012, decreased by 6.4%. In December 2012, the corresponding average rate of change of the Turnover Index in Industry was 3.0%.



Information:

Economic and Short-Term  
Indicators Division

Production Indices Section

Diamantaki Aikaterini  
Karathanos Panagiotis  
Tel: 0030 213 1352122  
Fax: 0030 213 1352738

The decrease of the Turnover Index in Industry by 11.8% in December 2013, compared with December 2012, was due to the annual changes as following:

- by Industrial Sections

- Mining and quarrying turnover decreased by 1.2%.
- Manufacturing turnover decreased by 12.0%.

In addition, the decrease of the Turnover Index in Industry by 11.8% in December 2013, compared with December 2012, was due to the annual changes of the indices of the markets as following:

- The Turnover Index in Industry for the domestic market decreased by 4.7%.
- The Turnover Index in Industry for the non-domestic market decreased by 20.3%.

The decrease of the Turnover Index in Industry for the non-domestic market by 20.3% in December 2013, compared with December 2012, was due to the annual changes as following:

- The Turnover Index in Industry for the Eurozone countries decreased by 7.0%.
- The Turnover Index in Industry for the non-Eurozone countries decreased by 23.4%.

**Table 1: Annual rates of change of the Turnover Index in Industry (Total Market)**

**Base year: 2005=100.0**

Branch code	Branch name	December			Rate of change (%)	
		2013*	2012	2011	2013/2012	2012/2011
	<b>OVERALL INDEX</b>	101.4	115.0	120.4	-11.8	-4.5
<b>B</b>	<b>MINING AND QUARRYING</b>	108.9	110.2	105.0	-1.2	4.9
<b>05</b>	Mining of coal and lignite	330.4	37.6	93.3	777.7	-59.7
<b>06</b>	Extraction of crude petroleum and natural gas	497.6	776.9	450.4	-35.9	72.5
<b>07</b>	Mining of metal ores	69.0	72.5	60.5	-4.8	19.7
<b>08</b>	Other mining and quarrying products	76.2	74.6	89.8	2.2	-17.0
<b>C</b>	<b>MANUFACTURING</b>	99.6	113.2	118.7	-12.0	-4.6
<b>10</b>	Food	90.2	90.6	109.1	-0.5	-16.9
<b>11</b>	Beverages	61.5	65.3	87.4	-5.9	-25.2
<b>12</b>	Tobacco products	78.0	63.8	82.1	22.4	-22.4
<b>13</b>	Textiles	20.3	25.2	31.5	-19.3	-20.1
<b>14</b>	Wearing apparel	43.6	42.9	52.3	1.6	-18.0
<b>15</b>	Leather and related products	22.5	28.5	31.8	-21.0	-10.2
<b>16</b>	Wood and cork	25.6	35.4	44.3	-27.6	-20.1
<b>17</b>	Paper and paper products	90.2	87.1	98.3	3.6	-11.4
<b>18</b>	Printing and recording services	49.4	56.2	57.1	-12.2	-1.6
<b>19</b>	Coke and refined petroleum products	185.3	228.5	212.4	-18.9	7.6
<b>20</b>	Chemicals and chemical products	68.2	71.1	65.0	-4.2	9.3
<b>21</b>	Basic pharmaceutical products and pharmaceutical preparations	141.2	122.8	140.4	14.9	-12.5
<b>22</b>	Rubber and plastic products	77.9	79.4	84.4	-1.9	-5.9
<b>23</b>	Other non-metallic mineral products	31.6	29.0	37.8	9.2	-23.3
<b>24</b>	Basic metals	75.7	77.6	105.2	-2.4	-26.3
<b>25</b>	Fabricated metal products	53.5	67.3	82.1	-20.6	-18.0
<b>26</b>	Computers, electronic and optical products	39.0	28.9	45.5	34.9	-36.5
<b>27</b>	Electrical equipment	58.9	104.8	94.0	-43.8	11.5
<b>28</b>	Machinery and equipment n.e.c.	121.2	129.3	102.4	-6.2	26.3
<b>29</b>	Motor vehicles, trailers and semi-trailers	55.7	37.6	63.9	48.3	-41.2
<b>30</b>	Other transport equipment	24.9	27.5	52.1	-9.3	-47.3
<b>31</b>	Furniture	38.3	37.1	52.8	3.2	-29.7
<b>32</b>	Other manufactured goods	61.9	70.5	83.7	-12.3	-15.7
<b>33</b>	Repair and installation services of machinery and equipment	58.8	64.0	74.1	-8.2	-13.6
	<b>MAIN INDUSTRIAL GROUPINGS</b>					
<b>1</b>	Energy	186.7	229.7	212.9	-18.7	7.9
<b>2</b>	Intermediate goods	66.4	71.0	82.2	-6.5	-13.6
<b>3</b>	Capital goods	56.8	64.7	76.8	-12.2	-15.7
<b>4</b>	Consumer Durables	35.9	40.8	53.9	-12.1	-24.3
<b>5</b>	Consumer Non-Durables	76.2	74.4	91.0	2.4	-18.3

\* Provisional data

Note:

1. The indices are calculated with infinite decimal figures and are rounded up to one decimal figure when published.
2. Percentage changes are calculated on the basis of indices with infinite decimal figures and are rounded up to one decimal figure when published.

**Table 2: Annual rates of change of the Turnover Index in Industry for the Domestic Market**

**Base year: 2005=100.0**

Branch code	Branch name	December			Rate of change (%)	
		2013*	2012	2011	2013/2012	2012/2011
	<b>OVERALL INDEX</b>	73.7	77.3	104.5	-4.7	-26.1
<b>B</b>	<b>MINING AND QUARRYING</b>	101.2	109.3	90.6	-7.4	20.5
<b>05</b>	Mining of coal and lignite	330.4	37.6	93.3	777.7	-59.7
<b>06</b>	Extraction of crude petroleum and natural gas	497.6	776.9	450.4	-35.9	72.5
<b>07</b>	Mining of metal ores	99.5	99.0	98.3	0.5	0.7
<b>08</b>	Other mining and quarrying products	39.0	45.9	51.0	-14.9	-10.0
<b>C</b>	<b>MANUFACTURING</b>	72.2	75.7	103.2	-4.6	-26.6
<b>10</b>	Food	86.1	87.0	100.8	-1.0	-13.7
<b>11</b>	Beverages	59.5	63.2	85.2	-5.8	-25.8
<b>12</b>	Tobacco products	47.5	47.6	55.7	-0.2	-14.5
<b>13</b>	Textiles	21.0	22.8	28.2	-8.0	-19.0
<b>14</b>	Wearing apparel	40.8	40.8	47.4	-0.1	-13.9
<b>15</b>	Leather and related products	24.8	31.5	30.4	-21.1	3.6
<b>16</b>	Wood and cork	19.8	28.5	40.4	-30.7	-29.4
<b>17</b>	Paper and paper products	85.1	84.6	93.3	0.6	-9.4
<b>18</b>	Printing and recording services	48.7	55.7	55.3	-12.6	0.8
<b>19</b>	Coke and refined petroleum products	122.4	122.6	200.7	-0.2	-38.9
<b>20</b>	Chemicals and chemical products	42.6	47.8	44.9	-10.7	6.4
<b>21</b>	Basic pharmaceutical products and pharmaceutical preparations	82.4	77.0	94.8	7.1	-18.8
<b>22</b>	Rubber and plastic products	54.7	57.0	61.6	-4.1	-7.4
<b>23</b>	Other non-metallic mineral products	22.5	21.2	32.6	6.1	-35.1
<b>24</b>	Basic metals	43.6	53.3	49.3	-18.2	8.2
<b>25</b>	Fabricated metal products	37.2	56.4	71.1	-34.0	-20.6
<b>26</b>	Computers, electronic and optical products	7.2	8.9	12.8	-18.2	-31.0
<b>27</b>	Electrical equipment	48.2	97.2	69.2	-50.4	40.5
<b>28</b>	Machinery and equipment n.e.c.	41.5	52.4	60.4	-21.0	-13.1
<b>29</b>	Motor vehicles, trailers and semi-trailers	35.9	24.0	53.4	49.5	-55.0
<b>30</b>	Other transport equipment	0.7	2.1	13.0	-66.5	-83.6
<b>31</b>	Furniture	33.2	33.7	48.8	-1.4	-31.0
<b>32</b>	Other manufactured goods	42.6	55.5	67.0	-23.2	-17.1
<b>33</b>	Repair and installation services of machinery and equipment	58.8	64.0	74.1	-8.2	-13.6
	<b>MAIN INDUSTRIAL GROUPINGS</b>					
<b>1</b>	Energy	124.7	125.0	201.4	-0.3	-37.9
<b>2</b>	Intermediate goods	47.8	54.9	57.2	-13.0	-4.0
<b>3</b>	Capital goods	36.9	48.1	61.1	-23.1	-21.3
<b>4</b>	Consumer Durables	31.4	34.9	50.0	-9.9	-30.2
<b>5</b>	Consumer Non-Durables	66.8	66.9	80.8	-0.1	-17.2

\* Provisional data

Note:

1. The indices are calculated with infinite decimal figures and are rounded up to one decimal figure when published.
2. Percentage changes are calculated on the basis of indices with infinite decimal figures and are rounded up to one decimal figure when published.

**Table 3: Annual rates of change of the Turnover Index in Industry for the Non - Domestic Market**

**Base year: 2005=100.0**

Branch code	Branch name	December			Rate of change (%)	
		2013*	2012	2011	2013/2012	2012/2011
	<b>OVERALL INDEX</b>	184.7	231.9	165.6	-20.3	40.0
<b>B</b>	<b>MINING AND QUARRYING</b>	105.9	101.2	123.1	4.6	-17.8
<b>05</b>	Mining of coal and lignite	0.0	0.0	0.0	0.0	0.0
<b>06</b>	Extraction of crude petroleum and natural gas	0.0	0.0	0.0	0.0	0.0
<b>07</b>	Mining of metal ores	41.7	48.7	26.7	-14.4	82.4
<b>08</b>	Other mining and quarrying products	123.8	115.9	150.0	6.8	-22.7
<b>C</b>	<b>MANUFACTURING</b>	182.3	229.6	162.9	-20.6	41.0
<b>10</b>	Food	107.2	104.9	151.0	2.2	-30.6
<b>11</b>	Beverages	90.1	96.2	117.2	-6.3	-18.0
<b>12</b>	Tobacco products	159.1	106.7	152.4	49.2	-30.0
<b>13</b>	Textiles	19.3	28.4	36.5	-32.0	-22.2
<b>14</b>	Wearing apparel	47.5	46.3	57.7	2.6	-19.7
<b>15</b>	Leather and related products	1.7	1.8	43.8	-5.9	-95.9
<b>16</b>	Wood and cork	65.4	81.2	70.6	-19.5	15.0
<b>17</b>	Paper and paper products	134.2	108.2	140.5	24.0	-23.0
<b>18</b>	Printing and recording services	109.6	108.8	231.3	0.7	-52.9
<b>19</b>	Coke and refined petroleum products	389.6	572.4	250.4	-31.9	128.6
<b>20</b>	Chemicals and chemical products	127.7	125.7	111.6	1.6	12.6
<b>21</b>	Basic pharmaceutical products and pharmaceutical preparations	435.6	352.6	369.1	23.5	-4.5
<b>22</b>	Rubber and plastic products	123.2	122.1	129.8	0.9	-5.9
<b>23</b>	Other non-metallic mineral products	92.0	81.1	67.3	13.4	20.4
<b>24</b>	Basic metals	108.2	102.5	161.6	5.6	-36.6
<b>25</b>	Fabricated metal products	114.5	109.7	126.0	4.3	-12.9
<b>26</b>	Computers, electronic and optical products	58.4	41.1	63.7	42.3	-35.5
<b>27</b>	Electrical equipment	69.8	112.3	121.4	-37.8	-7.5
<b>28</b>	Machinery and equipment n.e.c.	213.7	236.2	162.8	-9.5	45.1
<b>29</b>	Motor vehicles, trailers and semi-trailers	159.6	106.2	97.9	50.2	8.6
<b>30</b>	Other transport equipment	36.7	44.5	65.9	-17.6	-32.4
<b>31</b>	Furniture	266.4	179.7	216.5	48.2	-17.0
<b>32</b>	Other manufactured goods	122.7	119.3	150.2	2.8	-20.6
<b>33</b>	Repair and installation services of machinery and equipment	0.0	0.0	0.0	0.0	0.0
	<b>MAIN INDUSTRIAL GROUPINGS</b>					
<b>1</b>	Energy	389.6	572.4	250.4	-31.9	128.6
<b>2</b>	Intermediate goods	104.1	103.9	133.7	0.2	-22.3
<b>3</b>	Capital goods	124.5	123.7	119.2	0.6	3.8
<b>4</b>	Consumer Durables	55.6	61.9	68.8	-10.1	-10.0
<b>5</b>	Consumer Non-Durables	111.1	101.9	131.9	9.0	-22.8

\* Provisional data

Note:

1. The indices are calculated with infinite decimal figures and are rounded up to one decimal figure when published.
2. Percentage changes are calculated on the basis of indices with infinite decimal figures and are rounded up to one decimal figure when published.

**Table 4: Annual rates of change of the Turnover Index in Industry for the Eurozone Countries**

**Base year: 2005=100.0**

Branch code	Branch name	December			Rate of change (%)	
		2013*	2012	2011	2013/2012	2012/2011
	<b>OVERALL INDEX</b>	127.9	137.6	157.6	-7.0	-12.7
	<b>INDUSTRIAL SECTIONS</b>					
B	MINING AND QUARRYING	95.8	39.6	154.7	141.8	-74.4
C	MANUFACTURING	125.3	136.5	153.3	-8.2	-10.9
	<b>MAIN INDUSTRIAL GROUPINGS</b>					
1	Energy	1364.9	1938.7	732.4	-29.6	164.7
2	Intermediate goods	98.5	100.7	149.5	-2.2	-32.6
3	Capital goods	35.8	31.2	44.3	14.8	-29.5
4	Consumer Durables	289.8	221.0	226.4	31.1	-2.4
5	Consumer Non-Durables	91.0	88.7	139.8	2.7	-36.6

\* Provisional data

**Table 5: Annual rates of change of the Turnover Index in Industry for the Non - Eurozone Countries**

**Base year: 2005=100.0**

Branch code	Branch name	December			Rate of change (%)	
		2013*	2012	2011	2013/2012	2012/2011
	<b>OVERALL INDEX</b>	224.7	293.4	175.5	-23.4	67.2
	<b>INDUSTRIAL SECTIONS</b>					
B	MINING AND QUARRYING	115.5	154.9	95.3	-25.4	62.5
C	MANUFACTURING	222.5	290.5	173.7	-23.4	67.2
	<b>MAIN INDUSTRIAL GROUPINGS</b>					
1	Energy	360.3	531.3	236.0	-32.2	125.2
2	Intermediate goods	111.3	112.9	124.3	-1.4	-9.1
3	Capital goods	238.5	241.6	216.3	-1.3	11.7
4	Consumer Durables	45.3	37.0	66.6	22.4	-44.5
5	Consumer Non-Durables	137.8	118.0	123.0	16.8	-4.1

\* Provisional data

*Note:*

1. The indices are calculated with infinite decimal figures and are rounded up to one decimal figure when published.
2. Percentage changes are calculated on the basis of indices with infinite decimal figures and are rounded up to one decimal figure when published.

**Table 6: Evolution of the Turnover Index in Industry (Total Market)****Base year: 2005=100.0**

Year-month	Overall Index (Total Market)		Turnover Index in Industry for the Domestic Market		Turnover Index in Industry for the Non - Domestic Market	
	Index	Annual rate of change (%)	Index	Annual rate of change (%)	Index	Annual rate of change (%)
2012 XII	115.0	-4.5	77.3	-26.1	231.9	40.0
2013 I	99.0	-9.7	69.2	-21.4	191.4	9.2
II	97.5	-7.9	71.9	-15.4	176.0	3.9
III	103.8	-11.5	71.6	-22.0	202.8	4.0
IV	118.4	-4.6	90.4	-8.8	204.4	1.6
V	114.3	0.4	74.5	-13.4	237.4	19.7
VI	108.3	-5.4	81.7	-8.1	188.9	-1.6
VII	121.2	3.2	90.4	-5.3	215.2	17.5
VIII	110.5	1.2	78.4	-9.3	210.1	17.1
XI	105.3	-8.1	78.0	-6.5	187.6	-10.9
X	112.5	-10.1	84.9	-6.4	195.7	-15.2
XI	100.0	-12.1	71.8	-6.1	185.5	-19.0
XII*	101.4	-11.8	73.7	-4.7	184.7	-20.3

\*Provisional data

**Table 7: Evolution of the Turnover Index in Industry for the Non – Domestic Market****Base year: 2005=100.0**

Year-month	Overall Index (Non - Domestic Market)		Turnover Index in Industry for Eurozone Countries		Turnover Index in Industry for Non - Eurozone Countries	
	Index	Annual rate of change (%)	Index	Annual rate of change (%)	Index	Annual rate of change (%)
2012 XII	231.9	40.0	137.6	-12.7	293.4	67.2
2013 I	191.4	9.2	141.7	13.0	221.5	8.0
II	176.0	3.9	135.5	3.0	202.4	3.2
III	202.8	4.0	146.0	-13.2	238.9	10.3
IV	204.4	1.6	181.6	30.4	219.7	-8.8
V	237.4	19.7	195.2	13.7	265.1	22.3
VI	188.9	-1.6	153.7	-3.7	213.0	-0.5
VII	215.2	17.5	158.4	8.1	252.3	22.6
VIII	210.1	17.1	140.8	12.7	254.6	19.8
XI	187.6	-10.9	144.1	-3.0	215.3	-14.3
X	195.7	-15.2	158.6	-7.3	221.3	-18.1
XI	185.5	-19.0	143.2	-26.2	218.1	-14.2
XII*	184.7	-20.3	127.9	-7.0	224.7	-23.4

\*Provisional data

Note: 1. The indices are calculated with infinite decimal figures and are rounded up to one decimal figure when published.  
2. Percentage changes are calculated on the basis of indices with infinite decimal figures and are rounded up to one decimal figure when published.

**Table 8: Average indices and rates of change (%) of the 12-month periods of Turnover Index in Industry (Total Market)**

**Base year: 2005=100.0**

Branch code	Branch name	Average Indices of 12-month periods			Rate of change (%) 2013/2012	Rate of change (%) 2012/2011
		Jan. 2013- Dec. 2013*	Jan.2012- Dec. 2012	Jan. 2011- Dec. 2011		
	<b>OVERALL INDEX</b>	107.7	115.1	111.8	-6.4	3.0
<b>B</b>	<b>MINING AND QUARRYING</b>	94.4	87.8	98.4	7.6	-10.8
<b>05</b>	Mining of coal and lignite	112.7	52.3	134.5	115.2	-61.1
<b>06</b>	Extraction of crude petroleum and natural gas	169.1	193.4	210.1	-12.6	-8.0
<b>07</b>	Mining of metal ores	76.0	79.8	80.6	-4.8	-0.9
<b>08</b>	Other mining and quarrying products	91.6	84.0	91.9	9.2	-8.6
<b>C</b>	<b>MANUFACTURING</b>	106.2	113.6	110.2	-6.6	3.2
<b>10</b>	Food	102.7	105.2	108.0	-2.4	-2.6
<b>11</b>	Beverages	81.4	86.7	96.7	-6.1	-10.3
<b>12</b>	Tobacco products	74.7	73.8	80.7	1.3	-8.6
<b>13</b>	Textiles	31.9	33.6	42.9	-4.9	-21.7
<b>14</b>	Wearing apparel	41.3	40.5	49.2	2.0	-17.6
<b>15</b>	Leather and related products	25.3	25.8	49.1	-2.0	-47.4
<b>16</b>	Wood and cork	25.4	36.2	46.5	-29.8	-22.1
<b>17</b>	Paper and paper products	99.9	100.7	109.7	-0.9	-8.2
<b>18</b>	Printing and recording services	43.5	47.7	58.6	-8.7	-18.5
<b>19</b>	Coke and refined petroleum products	189.2	204.7	171.1	-7.6	19.7
<b>20</b>	Chemicals and chemical products	85.5	85.8	92.4	-0.3	-7.2
<b>21</b>	Basic pharmaceutical products and pharmaceutical preparations	139.3	126.2	127.8	10.4	-1.3
<b>22</b>	Rubber and plastic products	94.7	94.6	98.6	0.1	-4.0
<b>23</b>	Other non-metallic mineral products	37.6	37.9	47.7	-0.8	-20.5
<b>24</b>	Basic metals	88.4	100.6	116.0	-12.2	-13.2
<b>25</b>	Fabricated metal products	62.2	73.3	81.6	-15.2	-10.2
<b>26</b>	Computers, electronic and optical products	37.9	32.5	34.3	16.4	-5.0
<b>27</b>	Electrical equipment	71.9	93.8	85.0	-23.4	10.4
<b>28</b>	Machinery and equipment n.e.c.	66.7	75.6	82.5	-11.7	-8.4
<b>29</b>	Motor vehicles, trailers and semi-trailers	41.1	41.7	48.2	-1.5	-13.5
<b>30</b>	Other transport equipment	20.5	23.6	41.0	-13.3	-42.5
<b>31</b>	Furniture	32.7	39.6	57.9	-17.6	-31.5
<b>32</b>	Other manufactured goods	65.2	64.0	71.8	1.8	-10.8
<b>33</b>	Repair and installation services of machinery and equipment	39.0	45.8	52.8	-14.9	-13.2
	<b>MAIN INDUSTRIAL GROUPINGS</b>					
<b>1</b>	Energy	188.9	204.3	171.1	-7.5	19.4
<b>2</b>	Intermediate goods	79.0	84.2	93.2	-6.2	-9.7
<b>3</b>	Capital goods	40.1	47.6	57.1	-15.7	-16.7
<b>4</b>	Consumer Durables	39.5	47.2	57.6	-16.2	-18.1
<b>5</b>	Consumer Non-Durables	85.4	87.2	92.3	-2.1	-5.5

\*Provisional data

Note: 1. The indices are calculated with infinite decimal figures and are rounded up to one decimal figure when published.  
2. Percentage changes are calculated on the basis of indices with infinite decimal figures and are rounded up to one decimal figure when published.



## METHODOLOGICAL NOTES

<b>Generally</b>	The Turnover Index is being compiled since 2006.
<b>Purpose of the index</b>	The purpose of this index is to measure the monthly activity of the industrial sector in terms of value. Turnover comprises the totals invoiced (without VAT) by the observation units during the reference period and corresponds to the market sales of goods or services supplied to third parties. The purposes and the characteristics of the Turnover Index apply, as well, to the indices for the distinction between domestic and non-domestic turnover.
<b>Legal basis</b>	The compilation and publication of the Turnover Index is based on the framework of requirements of the Council Regulation (EC) No 1165/98 concerning short-term statistics (STS-R), as well as the amendment Regulation (EC) No 1158/05 of the European Parliament and Council, amending the Council Regulation (EC) No 1165/98. Furthermore, this index is governed by the Regulation (EEC) No.1893/2006 of the European Parliament and of the Council, by the Commission Regulation (EEC) No.656/2007 and by the Regulation (EEC) No.451/2008 of the Council.
<b>Reference period</b>	Month
<b>Base year</b>	2005=100.0.
<b>Revision</b>	The last revision of the Turnover Index in Industry with base year 2005=100.0 is done in the framework of the Short – Term Statistics (STS) Council Regulation (EC) No 1165/98 concerning short-term statistics. According to this regulation the index in question is updated every five years, in years ending in 0 or 5.
<b>Statistical classifications</b>	At the level of categories of economic activities the new Eurostat classification NACE Rev. 2 was used (Regulation 1893/2006), while at the level of main industrial groups, the allocation of two-digit and three-digit NACE Rev. 2 headings to categories of aggregate classification was used, in accordance with the Commission Regulation 656/2007. At product level, the new Eurostat classification CPA 2008 was used, according to the Council Regulation 451/2008.
<b>Geographical coverage</b>	The Index covers the whole country.
<b>Coverage of economic activities</b>	The Turnover Index in Industry covers the whole country and is compiled for all activities listed in Sections C (mining and quarrying) and D (manufacturing) of the NACE Rev.2 classification.
<b>Computation of the Index</b>	The Turnover Index in Industry is a fixed base index. This index is calculated initially at the four-digit level of economic activity and subsequently, with the implementation of appropriate weighting coefficients, the index is calculated at higher levels (three-level, two-level and one-level of economic activity) or at the level of Main Industrial Groupings (MIGs).
<b>Publication of data</b>	The Turnover Index with base year 2005=100.0 is being released since April 2009 with January 2009 as first reference month. Data with base year 2005=100.0 are available from January 2000 onwards.
<b>References</b>	More information about the methodology concerning the compilation and calculation of the index and for the time series is available on the Hellenic Statistical Authority (ELSTAT) website ( <a href="http://www.statistics.gr">www.statistics.gr</a> ).