



## PRESS RELEASE

### SURVEY ON PHYSICIANS AND DENTISTS, 2015

The Hellenic Statistical Authority (ELSTAT) announces the data of the Survey on Physicians and Dentists, with reference year 2015. For comparability reasons, the relevant data for the years 2010-2014 are also provided.

- In 2015, the number of physicians in Greece amounted to 68,401, recording a decrease of 0.6% in comparison with 2014.
- As regards the breakdown of data by NUTS 2 Regions, it is observed that the biggest decrease in the number of physicians was recorded in Voreio Aigaio (-6.4%), while the biggest increase was recorded in Anatoliki Makedonia, Thraki (+3.2%) (Table 1, Graph 1).

**Table 1. Number of physicians by NUTS 2 Regions, 2010-2015**

	2010	% 11/10	2011	% 12/11	2012	% 13/12	2013	% 14/13	2014	% 15/14	2015
Attiki	34,082	0.6	34,274	-0,3	34,177	-1,3	33,722	-0,9	33,427	-1,6	32,888
Stereia Ellada	1,691	0.4	1,697	0,5	1,705	-1,8	1,675	0,8	1,689	-0,9	1,673
Dytiki Ellada	3,811	0.6	3,833	-1,8	3,765	-0,9	3,731	-0,8	3,701	-1,4	3,650
Peloponnisos	2,213	2.1	2,260	0,0	2,261	-2,5	2,204	-4,8	2,099	-1,2	2,073
Thessalia	3,553	0.0	3,554	-0,9	3,523	1,6	3,578	2,0	3,651	1,3	3,697
Ipeiros	2,101	-5.7	1,982	1,9	2,020	1,0	2,041	11,1	2,268	1,0	2,291
An. Makedonia & Thraki	2,944	1.2	2,978	-1,4	2,935	-0,8	2,912	0,0	2,913	3,2	3,007
Kentr. Makedonia	11,387	0.5	11,443	-0,9	11,340	1,5	11,515	-0,3	11,485	0,5	11,539
Dyt. Makedonia	818	-0.5	814	5,2	856	-0,4	853	-2,9	828	-1,0	820
Ionia Nisia	888	-3.8	854	-0,4	851	10,3	939	-5,2	890	1,2	901
Voreio Aigaio	822	-1.6	809	-1,7	795	-6,3	745	5,4	785	-6,4	735
Notio Aigaio	1,076	3.6	1,115	1,8	1,135	-2,4	1,108	-1,8	1,088	6,9	1,163
Kriti	3,879	-1.5	3,822	0,8	3,852	0,3	3,863	3,1	3,983	-0,5	3,964
<b>Total</b>	<b>69,265</b>	<b>0.2</b>	<b>69,435</b>	<b>-0,3</b>	<b>69,215</b>	<b>-0,5</b>	<b>68,886</b>	<b>-0,1</b>	<b>68,807</b>	<b>-0,6</b>	<b>68,401</b>

#### **Information**

*Division of Social Statistics*

*Section of Health and Social Security and Protection*

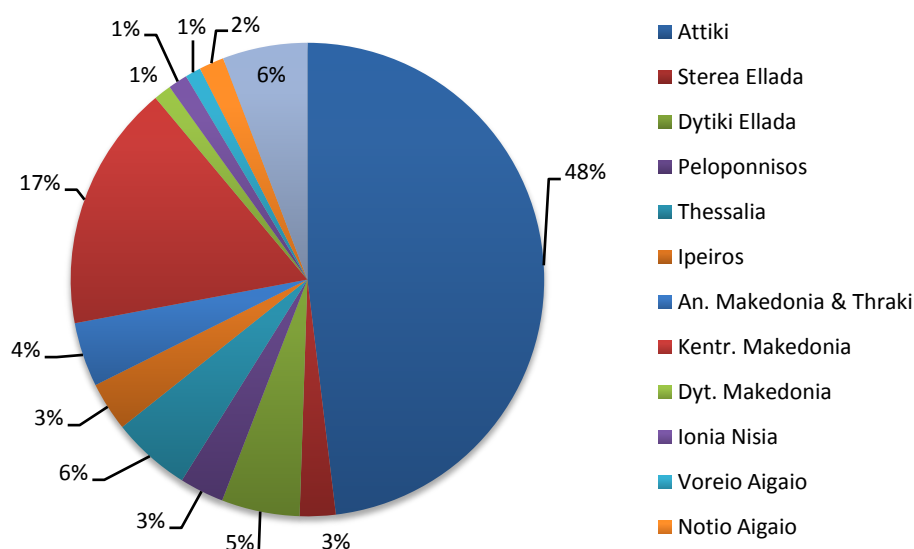
Evangelos Maragoudakis, Konstantinos Giasafakis

Tel: +30 213 135 2133

Fax: +30 213 135 2763

Email: [social\\_stat@statistics.gr](mailto:social_stat@statistics.gr)

**Graph 1. Number of physicians by NUTS 2 Regions, 2015**



As regards the breakdown of data by gender, it is observed that during 2010-2015 the number of male physicians has been slightly decreasing and more specifically, in 2015 a decrease of -0.8% is observed in comparison 2014. By contrast, the number of female physicians has been recording an increase, while in 2015 compared with 2014 female physicians experienced a lower percentage decrease (-0.3%) than male physicians (-0.8%), for Greece total (Tables 2a, 2b and Graphs 2a, 2b).

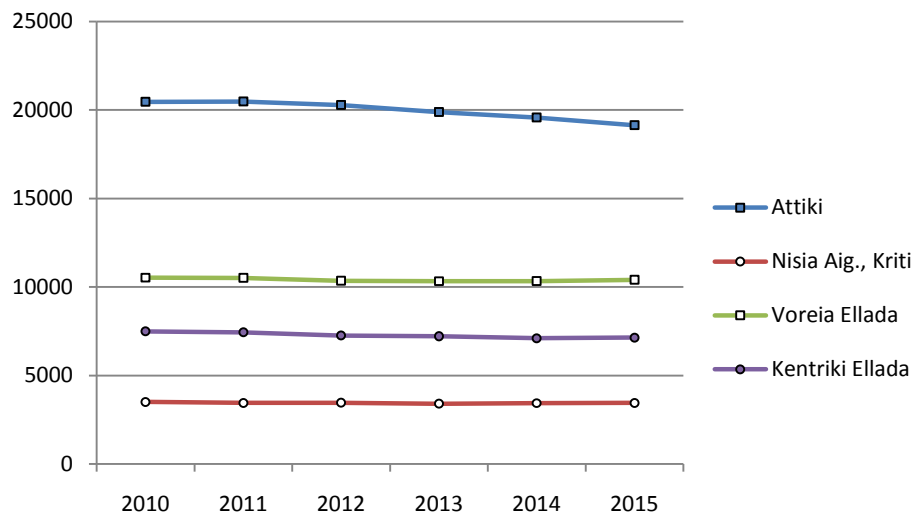
**Table 2a. Male physicians by NUTS 1 Region, 2010-2015**

	2010	% 11/10	2011	% 12/11	2012	% 13/12	2013	% 14/13	2014	% 15/14	2015
Attiki	20,457	0.1	20,477	-1.0	20,275	-2.0	19,879	-1.6	19,569	-2.2	19,139
Nisia Aig., Kriti	3,514	-1.7	3,456	0.4	3,471	-1.6	3,414	0.9	3,446	0.3	3,457
Voreia Ellada	10,528	-0.1	10,519	-1.6	10,355	-0.2	10,334	0.0	10,337	0.7	10,411
Kentriki Ellada	7,493	-0.7	7,439	-2.4	7,262	-0.6	7,221	-1.6	7,107	0.4	7,135
<b>Total</b>	<b>41,992</b>	<b>-0.2</b>	<b>41,891</b>	<b>-1.3</b>	<b>41,363</b>	<b>-1.2</b>	<b>40,848</b>	<b>-1.0</b>	<b>40,459</b>	<b>-0.8</b>	<b>40,142</b>

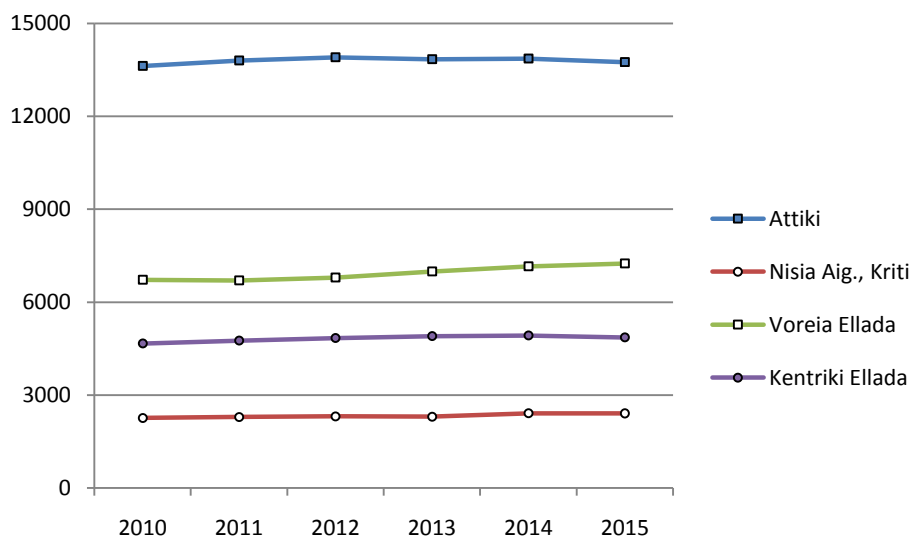
**Table 2b. Female physicians by NUTS 1 Region, 2010-2015**

	2010	% 11/10	2011	% 12/11	2012	% 13/12	2013	% 14/13	2014	% 15/14	2015
Attiki	13,625	1.3	13,797	0.8	13,902	-0.4	13,843	0.1	13,858	-0.8	13,749
Nisia Aig., Kriti	2,263	1.2	2,290	0.9	2,311	-0.4	2,302	4.7	2,410	-0.2	2,405
Voreia Ellada	6,722	-0.4	6,698	1.5	6,796	2.8	6,987	2.4	7,157	1.2	7,246
Kentriki Ellada	4,663	2.1	4,759	1.8	4,843	1.3	4,906	0.3	4,923	-1.3	4,859
<b>Total</b>	<b>27,273</b>	<b>1.0</b>	<b>27,544</b>	<b>1.1</b>	<b>27,852</b>	<b>0.7</b>	<b>28,038</b>	<b>1.1</b>	<b>28,348</b>	<b>-0.3</b>	<b>28,259</b>

**Graph 2a. Male physicians by NUTS 1 Region, 2010-2015**



**Graph 2b. Female physicians by NUTS 1 Region, 2010-2015**



During the period 2010-2015, the ratio of physicians to 10,000 inhabitants, by six main groups of specialties, has been recording a slight but steady increase (Table 3, Graph 3).

**Table 3. Number of physicians per 10,000 inhabitants, by group of specialties, 2010-2015**

	2010	2011	2012	2013	2014	2015
General practitioners	3.0	3.0	3.1	3.2	3.4	3.5
Paediatricians	2.9	2.9	3.0	3.1	3.1	3.2
Obstetricians -Gynaecologists	2.4	2.5	2.6	2.6	2.7	2.7
Psychiatrists	1.6	1.7	1.7	1.8	1.8	1.9
Medical group of specialists	17.9	18.3	19.0	19.6	20.2	20.8
Surgical group of specialists	9.7	10.0	10.5	10.9	11.1	11.4

**Graph 3. Number of physicians per 10,000 inhabitants, by group of specialties, 2015**

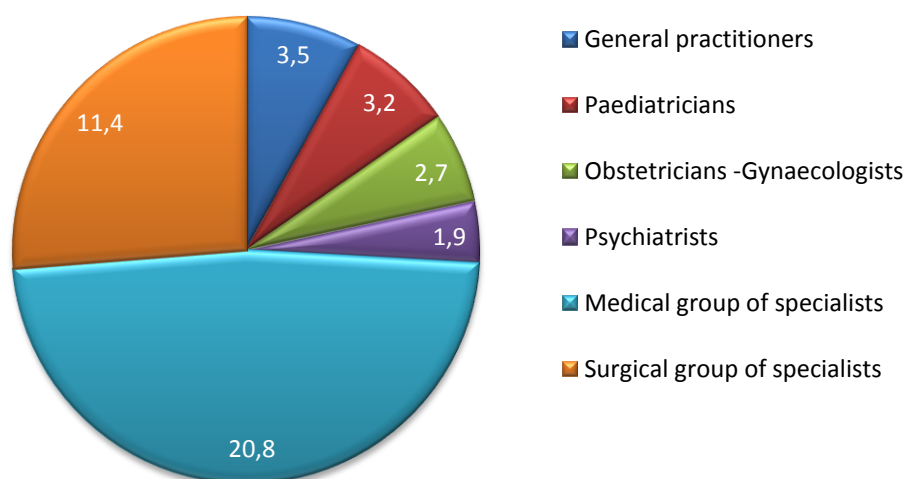
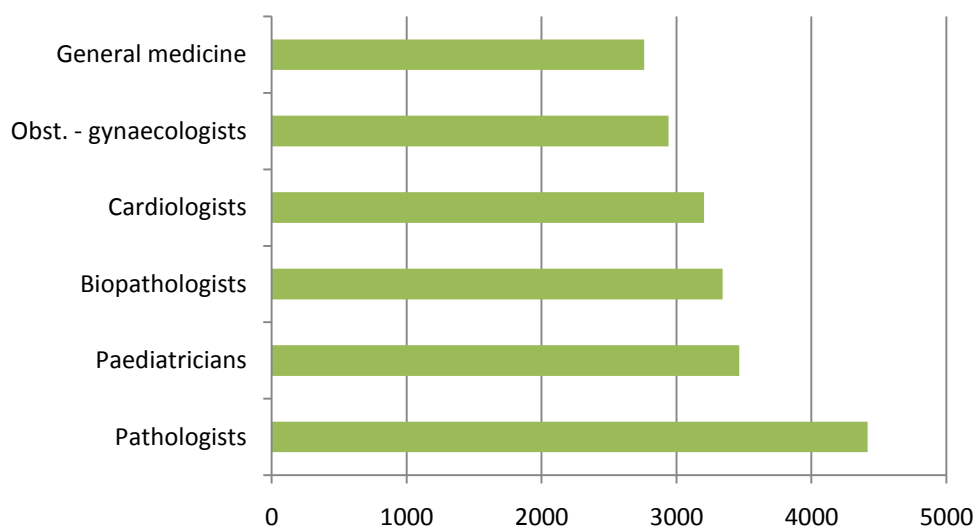


Table 4 and Graph 4 depict the most important medical specialties, in terms of number of physicians, for Greece total, namely Pathologists, Paediatricians, Microbiologists, Cardiologists, Obstetricians-Gynaecologists and General Practitioners. During 2010-2015, the number of physicians for these specialties, in Greece total, has been recording an increase, despite the decrease observed in other specialties.

**Table 4. Number of physicians by six most important specialties, 2010-2015**

Specialties	2010	2011	2012	2013	2014	2015
Pathologists	4,373	4,371	4,350	4,383	4,354	4,417
Paediatricians	3,279	3,293	3,326	3,326	3,388	3,466
Microbiologists	3,311	3,339	3,329	3,175	3,282	3,342
Cardiologists	2,820	2,887	2,974	3,092	3,177	3,205
Obstetricians-Gynaecologists	2,747	2,815	2,843	2,862	2,894	2,940
General medicine	2,065	2,216	2,373	2,461	2,626	2,760

**Graph 4. Number of physicians by six most important specialties, 2015**



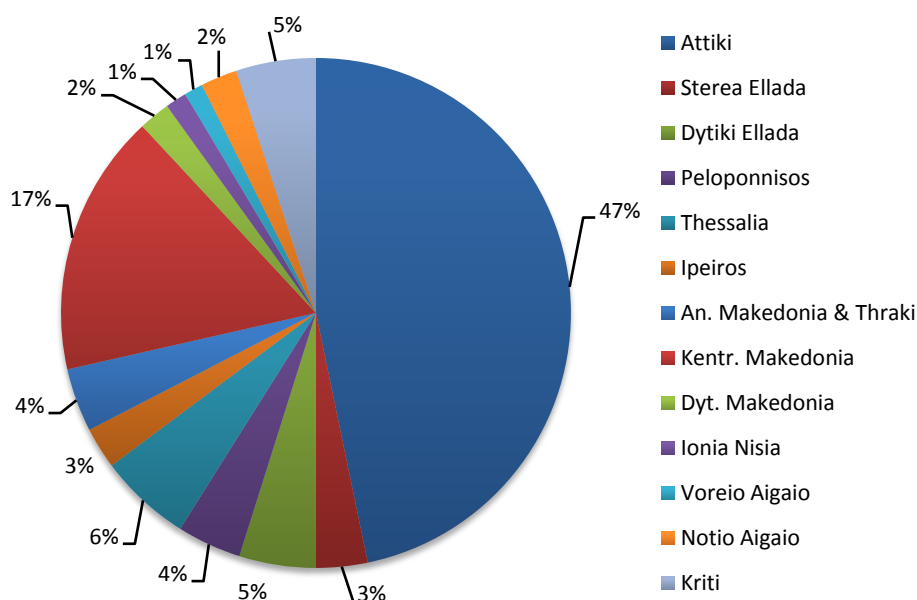
In 2015, the number of dentists in Greece amounted to 13,301, recording a decrease of -3.2% in comparison with 2014, the biggest year-on year- decrease observed during the years 2010-2015.

As regards the breakdown of data by NUTS 2 Regions, in 2015 compared with 2014, the biggest decrease in the number of dentists was recorded in Sterea Ellada (-8.4%), followed by Attiki (-4.9%), while in Kriti a 2.9% increase was recorded in the number of dentists. (Table 5, Graph 5).

Table 5. Number of dentists by NUTS 2 Regions, 2010-2015

	2010	% 11/10	2011	% 12/11	2012	% 13/12	2013	% 14/13	2014	% 15/14	2015
Attiki	7,138	-0.9	7,072	-3.0	6,860	-4.0	6,588	-0.7	6,540	-4.9	6,217
Sterea Ellada	468	3.8	486	-0.4	484	-1.7	476	0.4	478	-8.4	438
Dytiki Ellada	658	-1.5	648	1.1	655	-0.6	651	-1.7	640	0.3	642
Peloponnisos	560	4.8	587	-2.0	575	-1.9	564	-2.5	550	-1.3	543
Thessalia	856	-2.5	835	-1.9	819	0.5	823	-2.9	799	-2.6	778
Ipeiros	352	0.9	355	-2.8	345	1.4	350	0.0	350	0.0	350
An. Makedonia & Thraki	563	-2.0	552	-2.5	538	-0.6	535	0.6	538	-0.6	535
Kentr. Makedonia	2,544	-5.0	2,418	-1.6	2,379	-1.2	2,351	-2.9	2,283	-3.1	2,212
Dyt. Makedonia	265	3.4	274	-1.1	271	2.6	278	-4.3	266	-0.4	265
Ionia Nisia	164	4.9	172	-1.7	169	6.5	180	0.0	180	0.0	180
Voreio Aigaio	155	3.9	161	-0.6	160	0.6	161	-1.2	159	-0.6	158
Notio Aigaio	275	7.3	295	1.0	298	-0.3	297	3.7	308	0.3	309
Kriti	663	0.0	663	-1.2	655	0.3	657	-0.3	655	2.9	674
<b>Total</b>	<b>14,661</b>	<b>-1.0</b>	<b>14,518</b>	<b>-2.1</b>	<b>14,208</b>	<b>-2.1</b>	<b>13,911</b>	<b>-1.2</b>	<b>13,746</b>	<b>-3.2</b>	<b>13,301</b>

Graph 5. Number of dentists by NUTS 2 Regions, 2015



As regards the breakdown of data by gender, it is observed that during 2010-2015 the number of male dentists has been decreasing and more specifically, in 2015 a decrease of -3.9% is observed in comparison 2014. Similar trend for female dentists who have also been decreasing; nevertheless, in 2015 compared with 2014, female dentists experienced a lower percentage decrease (-2.5%) than male dentists for Greece total (Tables 6a, 6b and Graphs 6a, 6b).

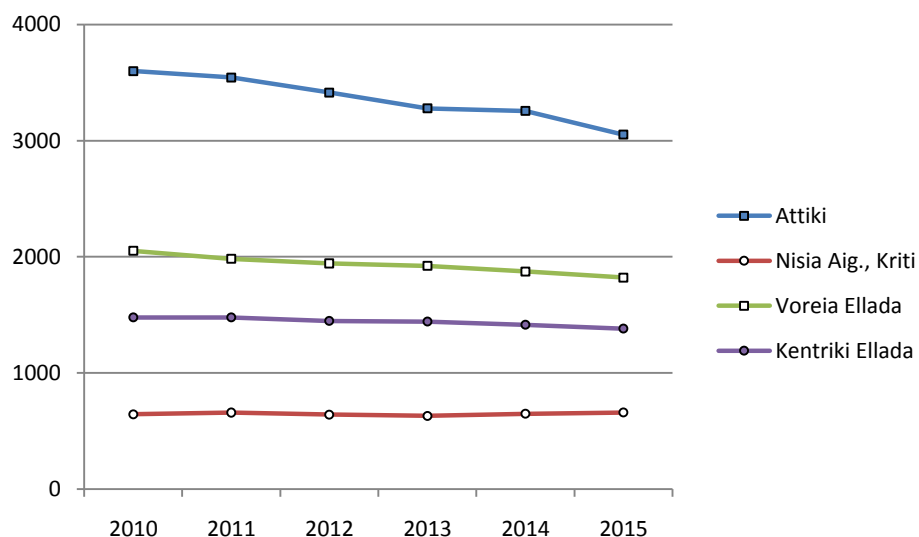
**Table 6a. Male dentists by NUTS 1 Region, 2010-2015**

	<b>2010</b>	% 11/10	<b>2011</b>	% 12/11	<b>2012</b>	% 13/12	<b>2013</b>	% 14/13	<b>2014</b>	% 15/14	<b>2015</b>
Attiki	3,599	-1.6	3,543	-3.6	3,415	-4.0	3,278	-0.7	3,256	-6.3	3,052
Nisia Aig., Kriti	644	2.2	658	-2.6	641	-1.7	630	2.9	648	1.7	659
Voreia Ellada	2,051	-3.3	1,983	-2.0	1,943	-1.1	1,922	-2.5	1,873	-2.8	1,821
Kentriki Ellada	1,478	-0.1	1,477	-2.0	1,447	-0.3	1,442	-1.9	1,415	-2.3	1,382
<b>Total</b>	<b>7,772</b>	<b>-1.4</b>	<b>7,661</b>	<b>-2.8</b>	<b>7,446</b>	<b>-2.3</b>	<b>7,272</b>	<b>-1.1</b>	<b>7,192</b>	<b>-3.9</b>	<b>6,914</b>

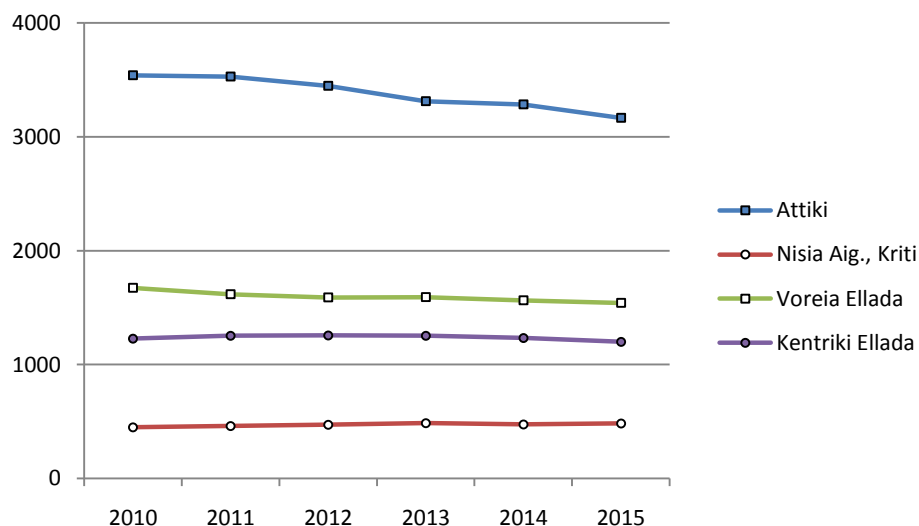
**Table 6b. Female dentists by NUTS 1 Region, 2010-2015**

	<b>2010</b>	% 11/10	<b>2011</b>	% 12/11	<b>2012</b>	% 13/12	<b>2013</b>	% 14/13	<b>2014</b>	% 15/14	<b>2015</b>
Attiki	3,539	-0.3	3,529	-2.4	3,445	-3.9	3,310	-0.8	3,284	-3.6	3,165
Nisia Aig., Kriti	449	2.7	461	2.4	472	2.8	485	-2.3	474	1.7	482
Voreia Ellada	1,673	-3.4	1,616	-1.6	1,590	0.1	1,592	-1.8	1,564	-1.5	1,541
Kentriki Ellada	1,228	1.9	1,251	0.3	1,255	-0.2	1,252	-1.6	1,232	-2.7	1,199

**Graph 2a. Male dentists by NUTS 1 Region, 2010-2015**



**Graph 2b. Female dentists by NUTS 1 Region, 2010-2015**



## EXPLANATORY NOTES

### Survey on physicians and dentists

The Survey on physicians and dentists records on a yearly basis the number of physicians and dentists all over Greece.

### Reference period

The survey results refer to the 31th of December of the reference year.

### Coverage

The survey covers Greece total. The data are collected and published at the level of the Regional Unit and of the Region (NUTS 2).

### Methodology

The survey is a census survey conducted at the level of the Regional Unit and the data derive from the local Associations of Physicians and Dentists of Greece. As regards physicians, the surveyed variables are the number of physicians by gender, Regional Unit, age group, and specialty.

As regards dentists, the surveyed variables are the number of dentists by gender, Regional Unit and age group.

In Table 3 and Graph 3 the specialties presented in the group of specialties are in line with the joint Eurostat/OECD/WHO questionnaire as follows:

“General medical practitioners” (include general practitioners, social medicine practitioners, and rural medical doctors),

“General paediatricians” (include paediatricians),

“Obstetricians-gynaecologists”,

“Psychiatrists” (include psychiatrists, neurologist-psychiatrists and paedopsychiatrists).

The “Medical group of specialists” encompasses Endocrinologists, Gastroenterologists, Respiratory medicine practitioners, Oncologists, Immunologists, Neurologists, Oto-rhino-laryngologists, Radiologists, Microbiology-bacteriologists, Haematologists, Dermatologists, Pathologists, Occupational medicine practitioners, forensic doctors.

The “surgical group of specialists” includes surgeons, neuro-surgeons, vascular surgeons, plastic surgery, anesthesiologists, urologists, ophthalmologists, orthopedics surgery, nephrologists, children surgery, physical medicine and rehabilitation doctors.

### Legal frame

National survey. From 2010 onwards, the survey is conducted through the joint Eurostat/OECD/WHO questionnaire, under the name: “Eurostat Joint Questionnaire on non-monetary Health Care Statistics”.

### References

More information on the survey on physicians and dentists can be found on the website of ELSTAT ([www.statistics.gr](http://www.statistics.gr)) at: Statistics>Population and Social Conditions> Health Care>Physicians and dentists.