



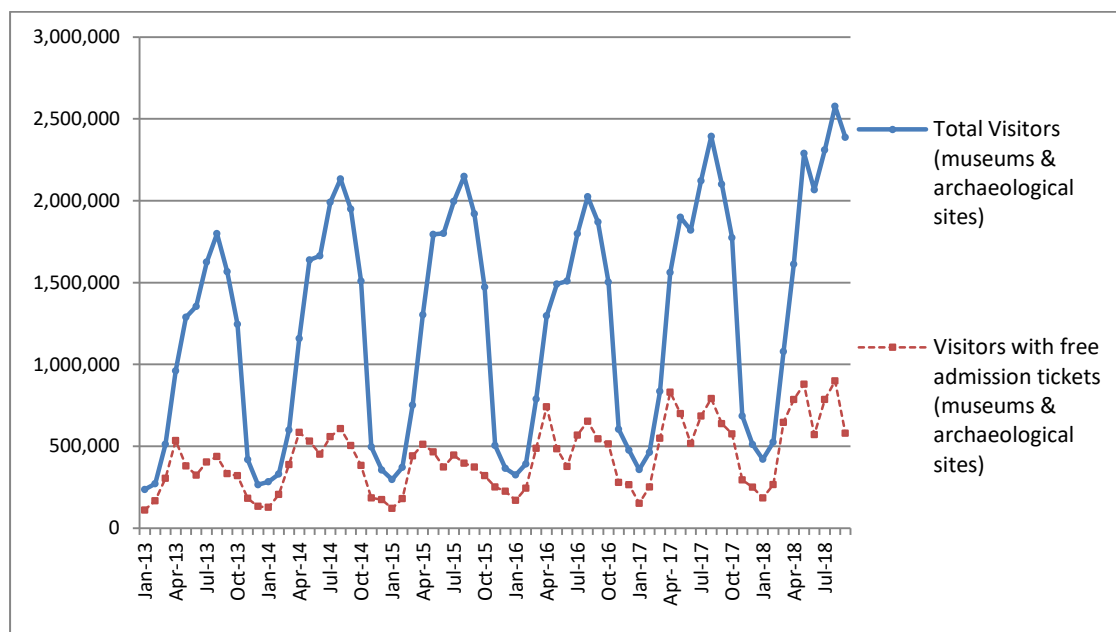
## PRESS RELEASE

### SURVEY ON MUSEUMS AND ARCHAEOLOGICAL SITES ATTENDANCE SEPTEMBER 2018

The Hellenic Statistical Authority (ELSTAT) announces the results of the *Survey on Museums and Archaeological Sites Attendance* for September 2018. More specifically:

- In September 2018 compared with the corresponding month of 2017, Museums experienced a 13.6% increase in the number of visitors and a 0.7% increase in the number of free admission visitors as well as a 16.9% increase in their receipts (Table 1),
- In September 2018 compared with the corresponding month of 2017, the number of visitors at Archaeological sites recorded an increase of 13.6%, while a decrease of 22.2% was observed in the number of free admission visitors and a 12.0% increase in the corresponding receipts (Table 1),
- During the nine-month period from January to September 2018, an increase of 8.5% was observed in the number of visitors of Museums, while an increase of 5.6% was recorded in the number of free admission visitors and an 12.0% increase in the relevant receipts, in comparison with the corresponding period of 2017 (Table 2),
- As regards Archaeological sites, during the nine-month period from January to September 2018, an increase of 14.5% was recorded in the number of visitors, while a 11.7% increase was observed in the number of free admission visitors and a 12.9% increase in the relevant receipts, in comparison with the corresponding period of 2017 (Table 2),

**Graph 1: Visitors of Museums and Archaeological sites (Jan 2013 – Sept 2018)**



**Information:**

Social Statistics Division

Section of Culture and Sports statistics,

Argyri Pateraki (Tel: +30 213 1352129, e-mail: [ar.pateraki@statistics.gr](mailto:ar.pateraki@statistics.gr))

**TABLE 1: VISITORS OF MUSEUMS AND ARCHAEOLOGICAL SITES - TOTAL RECEIPTS  
(SEPTEMBER 2017 & SEPTEMBER 2018)**

<b>I. VISITORS</b>			
<b>Museums and Archaeological sites</b>	<b>2017</b>	<b>2018</b>	<b>Change 2018/2017</b>
<b>Total number of visitors (A+B)</b>	<b>2,100,935</b>	<b>2,387,176</b>	<b>13.6%</b>
<b>A. Museums (C+E)</b>	<b>583,328</b>	<b>662,631</b>	<b>13.6%</b>
Acropolis Museum	164,267	193,645	17.9%
National Archaeological	56,905	69,298	21.8%
Ancient Olympia	14,892	17,348	16.5%
Palace of the Grand Master (Rhodes)	37,552	39,998	6.5%
Herakleion Archaeological (Crete)	68,869	83,751	21.6%
White Tower	23,782	20,929	-12.0%
Delphi	24,139	29,482	22.1%
Other museums	192,922	208,180	7.9%
<b>B. Archaeological Sites (D+F)</b>	<b>1,517,607</b>	<b>1,724,545</b>	<b>13.6%</b>
Epidavros <sup>(1)</sup>	51,401	64,999	26.5%
The Acropolis of Mycenae & Atreus' Treasure	49,376	57,206	15.9%
The Acropolis of Athens <sup>(2) (3)</sup>	359,252	388,503	8.1%
Sounio <sup>(3)</sup>	30,292	33,846	11.7%
The Acropolis of Lindos	79,110	89,194	12.7%
Royal Tombs of Vergina	19,243	20,431	6.2%
Ancient Olympia	57,947	57,638	-0.5%
Knossos (Crete)	94,413	122,682	29.9%
Phaistos (Crete)	13,180	13,520	2.6%
Ancient Korinthos <sup>(1)</sup>	22,540	24,245	7.6%
Mystras <sup>(1)</sup>	15,632	17,350	11.0%
Delphi	41,436	45,584	10.0%
Other archaeological sites	683,785	789,347	15.4%
<b>II. VISITORS WHO PAID TICKET</b>			
	<b>2017</b>	<b>2018</b>	<b>Change 2018/2017</b>
<b>Total number of visitors who paid ticket (C+D)</b>	<b>1,462,599</b>	<b>1,807,308</b>	<b>23.6%</b>
C. Museums	370,952	414,295	11.7%
D. Archaeological sites	1,091,647	1,393,013	27.6%
<b>III. VISITORS WITH FREE ADMISSION TICKETS</b>			
	<b>2017</b>	<b>2018</b>	<b>Change 2018/2017</b>
<b>Total number of visitors with free admission ticket (E+F)</b>	<b>638,336</b>	<b>579,868</b>	<b>-9.2%</b>
E. Museums	212,376	248,336	16.9%
F. Archaeological sites	425,960	331,532	-22.2%
<b>IV. RECEIPTS (euros)</b>			
	<b>2017</b>	<b>2018</b>	<b>Change 2018/2017</b>
<b>Total Receipts (G+H)</b>	<b>15,150,109.00</b>	<b>17,019,635.00</b>	<b>12.3%</b>
G. Museums	2,238,334.00	2,552,485.00	14.0%
H. Archaeological sites	12,911,775.00	14,467,150.00	12.0%

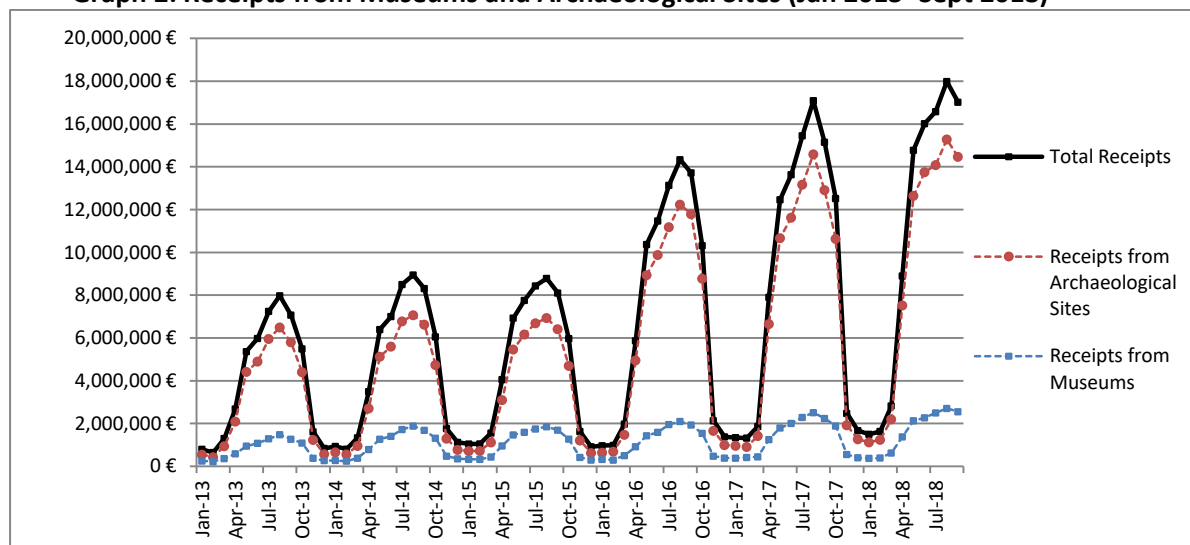
<sup>(1)</sup> Flat rate ticket, valid both for the museum and the archaeological site.

<sup>(2)</sup> From May 2017 onwards, the data for the number of tickets in the archaeological site of the Acropolis of Athens include the tickets of the Ancient Theatre of Dionysos.

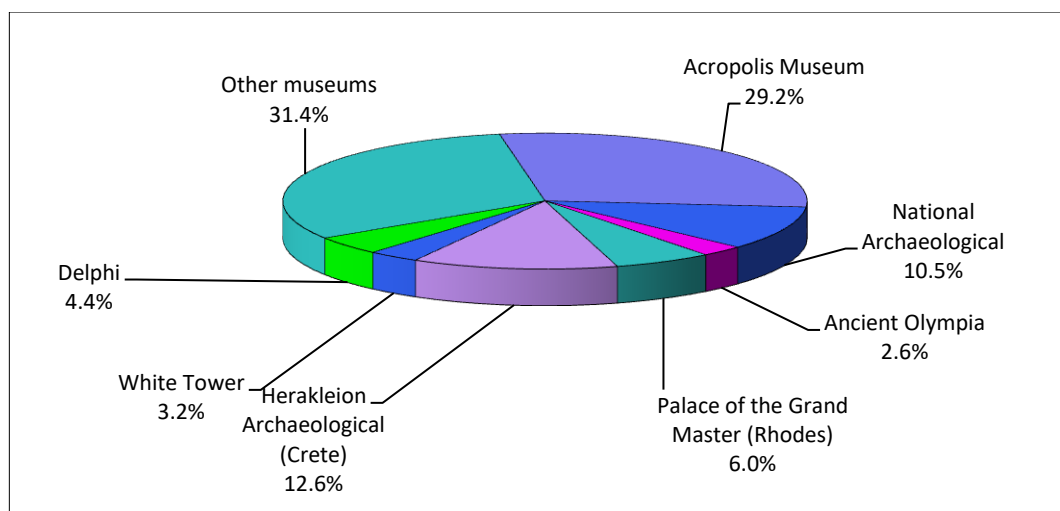
<sup>(3)</sup> The data referring to the number of tickets for the archaeological sites of the Acropolis of Athens and Sounion for September 2018 are provisional and are based on estimation.

The following graphs depict the evolution of the receipts (Graph 2), as well as the number of visitors by Museum and Archaeological Site (Graphs 3 and 4, respectively),

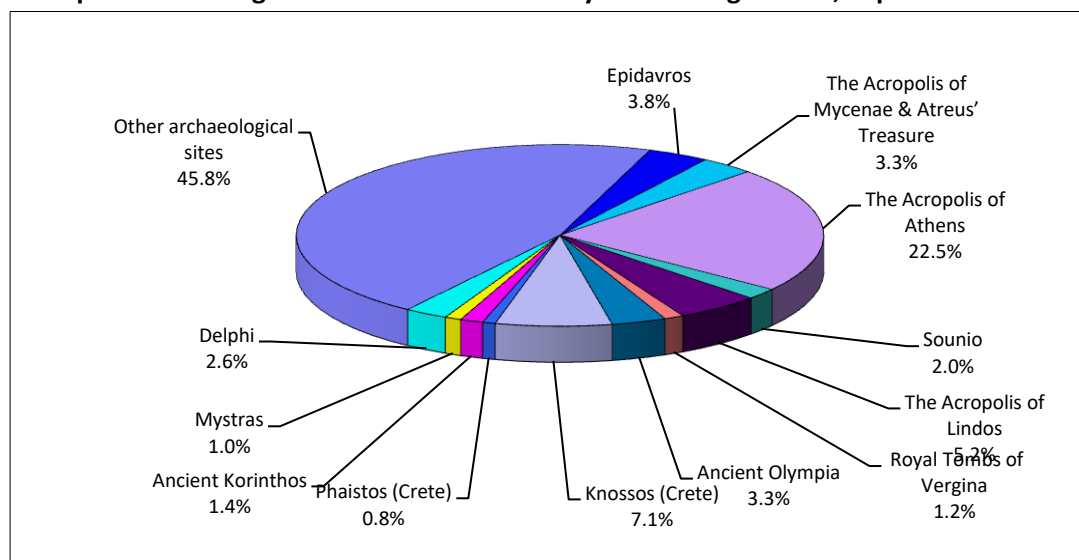
**Graph 2: Receipts from Museums and Archaeological Sites (Jan 2013- Sept 2018)**



**Graph 3: Percentage distribution of Visitors by Museum, September 2018**



**Graph 4: Percentage distribution of Visitors by Archaeological site, September 2018**



**TABLE 2: VISITORS OF MUSEUMS AND ARCHAEOLOGICAL SITES - TOTAL RECEIPTS  
(2016, 2017 AND JANUARY-SEPTEMBER 2017 & 2018)**

<b>I. VISITORS</b>					
Museums and Archaeological sites	2016	2017	JANUARY-SEPTEMBER		change 2018/2017
			2017	2018	
<b>Total number of visitors (A+B)</b>	<b>14,080,639</b>	<b>16,524,557</b>	<b>13,553,759</b>	<b>15,267,125</b>	<b>12.6%</b>
<b>A, Museums (C+E)</b>	<b>4,515,966</b>	<b>5,191,781</b>	<b>4,172,095</b>	<b>4,528,658</b>	<b>8.5%</b>
Acropolis Museum	1,406,096	1,593,362	1,267,434	1,397,644	10.3%
National Archaeological	447,093	545,555	435,272	463,407	6.5%
Ancient Olympia	124,136	145,118	120,330	131,382	9.2%
Palace of the Grand Master (Rhodes)	237,361	235,413	198,980	203,144	2.1%
Herakleion Archaeological (Crete)	394,915	426,191	350,870	456,973	30.2%
White Tower	290,192	268,149	212,176	170,444	-19.7%
Delphi	166,091	211,827	175,517	202,525	15.4%
Other museums	1,450,082	1,766,166	1,411,516	1,503,139	6.5%
<b>B, Archaeological Sites (D+F)</b>	<b>9,564,673</b>	<b>11,332,776</b>	<b>9,381,664</b>	<b>10,738,467</b>	<b>14.5%</b>
Epidavros <sup>(1)</sup>	375,437	469,060	398,851	470,607	18.0%
The Acropolis of Mycenae & Atreus' Treasure	342,854	412,397	349,284	418,498	19.8%
The Acropolis of Athens <sup>(4)</sup>	1,807,580	2,766,218	2,214,774	2,592,953	17.1%
Sounio <sup>(4)</sup>	222,800	259,709	211,435	253,030	19.7%
The Acropolis of Lindos	421,070	441,012	379,734	423,583	11.5%
Royal Tombs of Vergina	186,627	203,632	164,140	179,295	9.2%
Ancient Olympia	423,424	481,252	397,207	402,459	1.3%
Knossos (Crete)	611,455	634,710	528,853	709,519	34.2%
Phaistos (Crete)	77,071	95,182	68,744	100,781	46.6%
Ancient Korinthos <sup>(1)</sup>	153,307	191,836	159,718	158,321	-0.9%
Mystras <sup>(1)</sup>	114,293	125,549	107,886	124,600	15.5%
Delphi	290,705	345,804	284,313	337,731	18.8%
Other archaeological sites	4,538,050	4,906,415	4,116,725	4,567,090	10.9%
<b>II, VISITORS WHO PAID TICKET</b>					
	2016	2017	JANUARY-SEPTEMBER		change 2018/2017
			2017	2018	
<b>Total number of visitors who paid ticket (C+D)</b>	<b>8,749,957</b>	<b>10,288,448</b>	<b>8,438,764</b>	<b>9,668,377</b>	<b>14.6%</b>
C, Museums	2,406,665	2,831,466	2,289,093	2,539,690	10.9%
D, Archaeological sites	6,343,292	7,456,982	6,149,671	7,128,687	15.9%
<b>III, VISITORS WITH FREE ADMISSION TICKETS</b>					
	2016	2017	JANUARY-SEPTEMBER		change 2017/2016
			2017	2018	
<b>Total number of visitors with free admission ticket (E+F)</b>	<b>5,330,682</b>	<b>6,236,109</b>	<b>5,114,995</b>	<b>5,598,748</b>	<b>9.5%</b>
E, Museums	2,109,301	2,360,315	1,883,002	1,988,968	5.6%
F, Archaeological sites	3,221,381	3,875,794	3,231,993	3,609,780	11.7%
<b>IV, RECEIPTS (euros)</b>					
	2016	2017	JANUARY-SEPTEMBER		change 2017/2016
			2017	2018	
<b>Total Receipts (G+H)</b>	<b>86,647,638.00</b>	<b>102,887,879.00</b>	<b>86,222,078.00</b>	<b>97,229,869.00</b>	<b>12.8%</b>
G, Museums	13,448,464.00	16,175,121.00	13,330,475.00	14,929,666.00	12.0%
H, Archaeological sites	73,199,174.00	86,712,758.00	72,891,603.00	82,300,203.00	12.9%

<sup>(1)</sup> Flat rate ticket, valid both for the museum and the archaeological site.

<sup>(2)</sup> From May 2017 onwards, the data for the number of tickets in the archaeological site of the Acropolis of Athens include the tickets of the Ancient Theatre of Dionysos.

<sup>(3)</sup> The data on the number of visitors to the archaeological site of the Acropolis of Mycenae & Atreus' Treasure for May 2017 have been revised.

<sup>(4)</sup> The data referring to the number of tickets for the archaeological sites of the Acropolis of Athens and Sounion for September 2018 are provisional and are based on estimation.

## EXPLANATORY NOTES

<b>Survey on Museums and Archaeological Sites Attendance</b>	The Survey on Museums and Archaeological Sites Attendance has been producing results since 1970, The survey collects data from the Archaeological Receipts Fund (ARF) of the Ministry of Culture and Sports concerning the number of visitors and the receipts from the tickets sold in the Museums and Archaeological sites of the country, The corresponding data for the Acropolis Museum are available from December 2009 onwards,
<b>Legal Framework</b>	The survey is conducted since 1970 on a regular basis and it produces results on a monthly and yearly basis, in compliance with the Joint Ministerial Decision 15189/B379/73,
<b>Reference Period</b>	01/09/2018 to 30/09/2018,
<b>Methodology and Definitions</b>	The Survey is conducted on a monthly basis from data collected from the Archaeological Receipts Fund (ARF) of the Ministry of Culture and Sports concerning on the number of visitors and the receipts from the tickets sold in the Museums and Archaeological sites of the country, ELSTAT tabulates the data on Museums and the Archaeological sites for the whole of the Country, by month and by year,

### Information on ticket payment

- From January 2002 onwards, the number of Museums' visitors includes both the visitors who have bought a ticket and the visitors with free admission ticket, From 16-06-1996 onwards, the Museums and the Archaeological sites all over Greece have a paid admission for all the visitors, Greeks and foreigners, all over the year, except in the following days, which are free admission days:
- National Holidays (25th of March and 28th of October)
- The first Sunday every month during the five month period from 1 November to 31 March
- The 6th of March (in memory of Melina Merkouri)
- The 18th of April (International Monuments Day)
- The 18th of May (International Museums Day)
- The 5th of June (International Environment Day)
- The last weekend of September, annually (European Heritage Days)

### Free admission tickets

The admission to Museums and Archaeological site is free for:

- Young people from EU-countries aged under 18 years, with current identification card to confirm their age,
- Students of Universities and of Higher and Technical Education Institutions or equivalent institutions of EU-countries, as well as of Tour Guide Training Institutes, with valid student identification card or International Student Identity Card (ISIC)
- Employees of the Hellenic Ministry of Culture, with valid professional identity card
- ICOM and ICOMOS cardholders
- Tour Guides with their current working identification card from the Ministry of Development
- Teachers accompanying pupils and students on primary, secondary and tertiary education institution tours
- Journalists with valid journalists' identification card
- Members of Associations and Societies of Friends of Museums and Archaeological Sites
- Official guests of the Greek Government, after relevant approval
- Escorts of blind persons and persons with disabilities
- Free admission cardholders
- Holders of the Culture Card

### Number of flat rate tickets

From April 1999 onwards, in some museums and the nearby archaeological sites, in addition to the ordinary ticket, a new "flat rate ticket" was established, which is valid for both the museum and the nearby archaeological site, The total number of these flat rate tickets for September **2018** was 145,396,

More information on the Survey on Museums and Archaeological Sites Attendance and detailed time series are available on: <http://www.statistics.gr/en/statistics/-/publication/SC121/->