

PRESS RELEASE

ARRIVALS AND NIGHTS SPENT IN HOTELS, SIMILAR ESTABLISHMENTS AND TOURIST CAMPSITES: 2016 (final data)

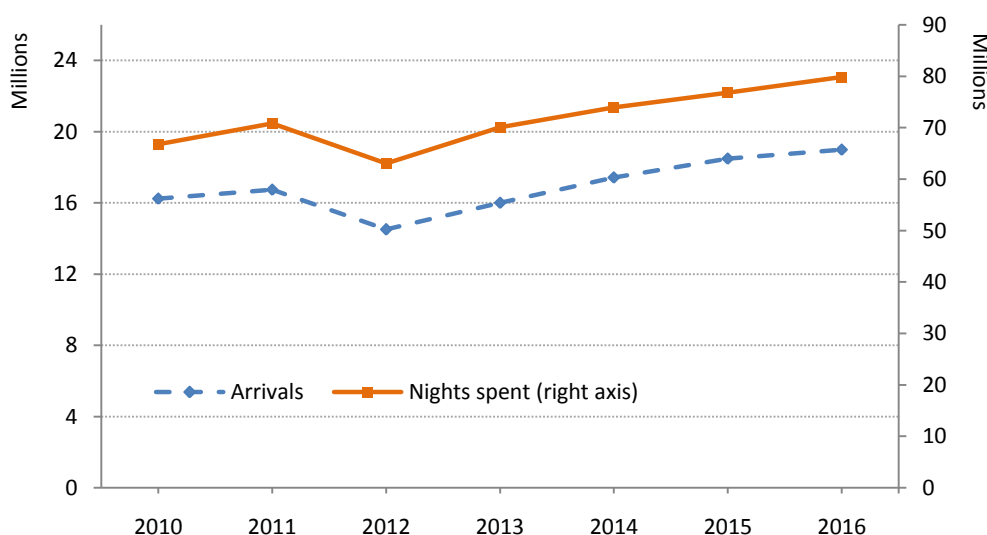
According to the results of the Survey on arrivals and nights spent in hotels, similar establishments and tourist campsites, conducted by the Hellenic Statistical Authority (ELSTAT), for the total of these establishments, in 2016 compared with 2015, an increase of 2.7% is recorded in arrivals (Tables 1 and 4) and 4.0% in nights spent (Tables 2 and 5).

More specifically, in 2016 compared with 2015, an increase of 4.5% is recorded in arrivals and 5.8% in nights spent by residents (Tables 1 and 2) and a similar trend is observed for arrivals and nights spent by non-residents, which increased by 1.9% and 3.6% respectively (Tables 1, 2, 7 and 8).

The annual occupancy of bed places in hotels and similar establishments (excluding tourist campsites), which is calculated taking into account the nights spent compared to the bed places that were in operation, was 50.1% in 2016, compared with 49.1% in 2015 (Tables 3 and 6).

More specifically, according to the monthly data, 84.8% of the arrivals and 92.0% of the nights spent, in hotels, similar establishments and tourist campsites of Greece, are recorded during the period from April to October (Tables 1 and 2), showing an extension of the touristic period.

Graph 1. Arrivals and nights spent in hotels, similar establishments and tourist campsites, 2010 – 2016



Information:

Trade and Services Statistics Division
Tourism Statistics Section
A. Katri, D. Stamou, M. Apartoglou
Tel.: +30 213 135 2168, 2951, 2942
Fax: 213 135 2947
e-mail: tourism.sector@statistics.gr

As regards the breakdown of data by Region (NUTS 2), a significant increase of arrivals, in absolute values, in hotels, similar establishments and tourist campsites is observed in Kriti (11.6% in arrivals and 8.1% in nights spent), Ionia Nisia (8.4% in arrivals and 8.9% in nights spent), Notio Aigaio (2.9% in arrivals and 0.2% in nights spent), Peloponnisos (5.1% in arrivals and 12.5% in nights spent) and Kentriki Makedonia (1.6% in arrivals and 2.5% in nights spent). On the contrary, a decrease of arrivals, in absolute values, is observed in Attiki 2.3% in arrivals but increase of 0.1% in nights spent, Voreio Aigaio 18.9% in arrivals and 13.2% in nights spent and Dytiki Ellada 9.6% in arrivals but increase of 2.6% in nights spent (Tables 4 and 5).

In 2016, the largest share of arrivals and nights spent in hotels, similar establishments and tourist campsites, in absolute values, is recorded by non-residents i.e 68.3% of arrivals and 81.9% of nights spent, (Graph 3).

In 2016, the largest share of arrivals and nights spent by non-residents in hotels, similar establishments and tourist campsites, in absolute values, is recorded by customers (guests) whose country of residence is in Europe (83.1% of arrivals and 91.3% of nights spent) with significant contribution from the EU Members States (68.6% in arrivals and 75.5% in nights spent). The largest contribution concerning arrivals, in absolute values, is recorded for the United Kingdom (14.0% in arrivals and 17.1% in nights spent), Germany (13.1% in arrivals and 17.2% in nights spent), France (8.0% in arrivals and 7.0% in nights spent), Italy (5.1% in arrivals and 4.3% in nights spent), Poland (3.5% in arrivals and 4.1% in nights spent) and Sweden (3.5% in arrivals and 4.3% in nights spent). For the rest of the European countries, the largest contribution is recorded for Russia (5.7% in arrivals and 7.7% in nights spent) (Tables 7 and 8).

When comparing the data on arrivals and nights spent in hotels, similar establishments and tourist campsites, by country of residence of the customers (guests) of the year 2016 with the corresponding data of the year 2015, a significant increase of arrivals, in absolute values, is recorded, as regards the EU countries, for Germany (12.8% in arrivals and 10.1% in nights spent), the United Kingdom (10.9% in arrivals and 10.0% in nights spent) and Sweden (8.6% in arrivals and 6.3% in nights spent). As regards the other European countries, an increase of arrivals, in absolute values, is observed for Russia (5.8% in arrivals and 3.6% in nights spent). As regards the rest of the continents, no significant change is observed in arrivals, in absolute values, except for the USA, where a decrease of 10.7% is recorded in arrivals and 6.5% in nights spent (Tables 7 and 8).

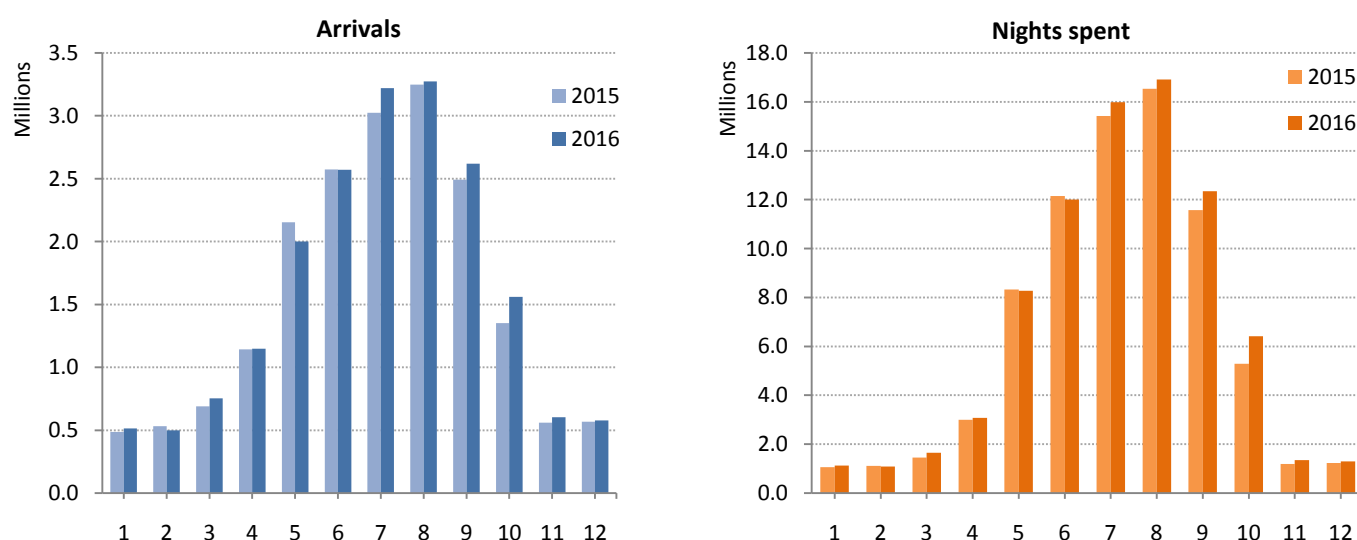
Table 1. Arrivals of residents and non-residents at hotels, similar establishments and tourist campsites, by month, 2015 and 2016

	2015					2016					Change % of total 2016/2015
	Total	Hotels and similar establishments		Tourist campsites		Total	Hotels and similar establishments		Tourist campsites		
		Residents	Non-residents	Residents	Non-residents		Residents	Non-residents	Residents	Non-residents	
Total	18,821,179	5,744,134	12,734,567	128,439	214,039	19,337,472	5,996,434	12,999,947	141,364	199,727	2.7
January	485,431	340,418	144,691	161	161	513,196	364,203	148,752	98	143	5.7
February	532,593	374,250	158,157	83	103	499,200	336,034	162,927	121	118	-6.3
March	689,505	438,955	250,181	88	281	753,613	464,676	288,421	185	331	9.3
April	1,141,786	487,821	649,580	533	3,852	1,148,953	535,009	610,614	601	2,729	0.6
May	2,152,897	543,072	1,583,962	6,928	18,935	1,999,717	466,895	1,514,124	3,763	14,935	-7.1
June	2,573,973	509,678	2,020,795	12,974	30,526	2,570,086	569,128	1,956,473	18,712	25,773	-0.2
July	3,025,144	563,000	2,362,326	38,938	60,880	3,219,993	711,432	2,402,993	47,582	57,986	6.4
August	3,247,472	775,802	2,343,064	60,935	67,671	3,272,345	773,151	2,368,969	63,595	66,630	0.8
September	2,493,173	513,471	1,945,021	6,939	27,742	2,620,326	539,641	2,047,917	5,954	26,814	5.1
October	1,351,422	428,633	919,038	447	3,304	1,559,154	455,833	1,099,235	490	3,596	15.4
November	559,050	353,209	205,240	254	347	602,686	372,392	229,712	132	450	7.8
December	568,733	415,825	152,512	159	237	578,203	408,040	169,810	131	222	1.7

Table 2. Nights spent of residents and non-residents in hotels, similar establishments and tourist campsites, by month, 2015 and 2016

	2015					2016					Change % of total 2016/2015
	Hotels and similar establishments			Tourist campsites		Hotels and similar establishments			Tourist campsites		
	Total	Residents	Non-residents	Residents	Non-residents	Total	Residents	Non-residents	Residents	Non-residents	
Total	78,332,342	13,201,273	63,570,840	765,973	794,256	81,502,649	13,943,606	65,941,418	831,596	786,029	4.0
January	1,054,362	681,159	371,789	250	1,164	1,128,462	741,195	386,020	205	1,042	7.0
February	1,117,262	742,976	373,277	181	828	1,087,741	666,883	419,945	265	648	-2.6
March	1,456,316	865,899	589,159	263	995	1,644,852	912,129	731,313	498	912	12.9
April	2,994,177	1,012,549	1,970,666	2,571	8,391	3,073,955	1,094,376	1,969,720	2,645	7,214	2.7
May	8,331,185	1,125,634	7,093,175	51,578	60,798	8,275,650	1,007,394	7,166,617	48,002	53,637	-0.7
June	12,148,665	1,124,979	10,822,252	93,691	107,743	12,000,708	1,257,847	10,520,651	120,614	101,596	-1.2
July	15,419,780	1,575,011	13,398,566	214,188	232,015	15,980,756	1,950,739	13,537,738	262,542	229,737	3.6
August	16,527,563	2,512,015	13,410,856	338,118	266,574	16,917,825	2,567,372	13,740,446	340,803	269,204	2.4
September	11,578,112	1,170,481	10,240,428	62,730	104,473	12,340,869	1,233,344	10,946,699	53,331	107,495	6.6
October	5,288,263	845,364	4,432,517	1,580	8,802	6,411,885	932,735	5,465,387	1,909	11,854	21.2
November	1,187,823	684,955	500,960	462	1,446	1,343,164	727,943	612,995	445	1,781	13.1
December	1,228,834	860,251	367,195	361	1,027	1,296,782	851,649	443,887	337	909	5.5

Graph 2. Arrivals and nights spent in hotels, similar establishments and tourist campsites, by month, 2015 and 2016



Graph 3. Arrivals and nights spent by residents and non-residents in hotels, similar establishments and tourist campsites, 2016

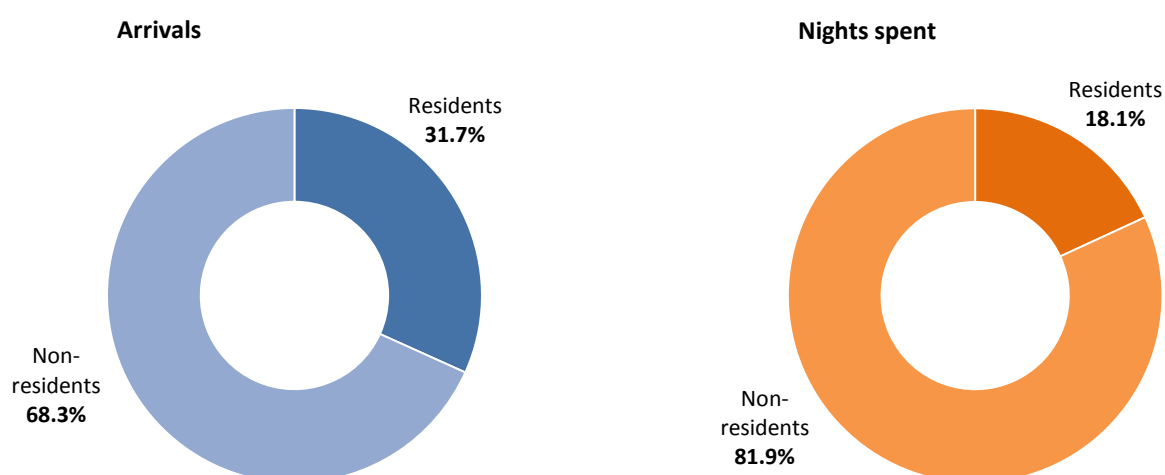


Table 3. Occupancy of bed-places that were in operation in hotels and similar establishments, by month, 2015 and 2016

Occupancy of bed-places %		
	2015	2016
Annual occupancy	49.1	50.1
January	18.0	19.0
February	20.7	19.2
March	20.5	22.8
April	22.5	22.5
May	44.5	43.7
June	61.7	60.1
July	70.9	72.0
August	74.2	74.8
September	61.3	63.9
October	32.7	38.6
November	18.1	19.8
December	21.8	22.4

Graph 4. Occupancy of bed-places that were in operation in hotels and similar establishments, by month, 2015 and 2016

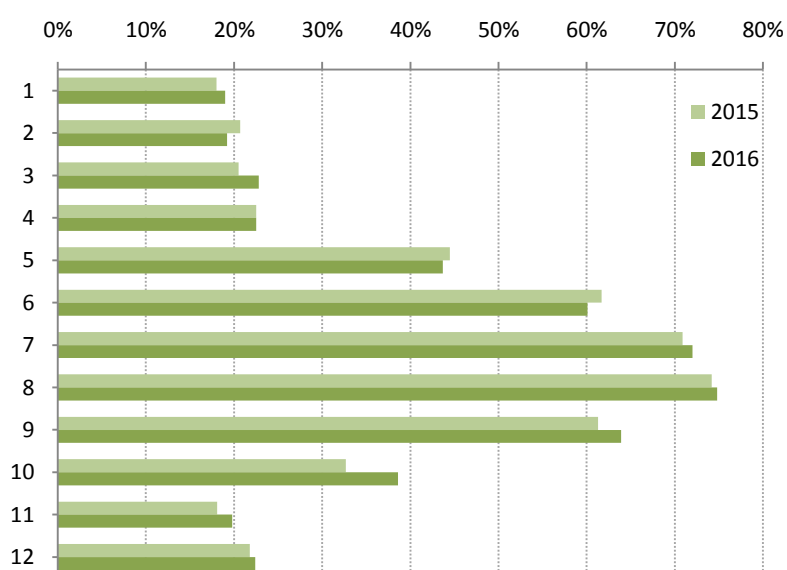


Table 4. Arrivals at hotels, similar establishments and tourist campsites, by Nuts 2 Region, 2015 and 2016

	2015				2016				Change % of total 2016/2015
	Total	Hotels and similar establishments	Tourist campsites	Percentage % of total	Total	Hotels and similar establishments	Tourist campsites	Percentage % of total	
Total	18,821,179	18,478,701	342,478	100.0	19,337,472	18,996,381	341,091	100.0	2.7
Anatoliki Makedonia, Thraki	628,211	606,705	21,506	3.3	627,114	605,998	21,116	3.2	-0.2
Kentriki Makedonia	2,490,170	2,392,102	98,068	13.2	2,530,212	2,430,086	100,126	13.1	1.6
Dytiki Makedonia*	122,935	122,935	0	0.7	118,766	118,766	0	0.6	-3.4
Thessalia	834,133	814,656	19,477	4.4	831,893	813,763	18,130	4.3	-0.3
Ipeiros	397,448	385,687	11,761	2.1	419,061	406,791	12,270	2.2	5.4
Ionia Nisia	1,391,263	1,375,479	15,784	7.4	1,508,475	1,490,856	17,619	7.8	8.4
Dytiki Ellada	668,933	645,768	23,165	3.6	604,924	588,632	16,292	3.1	-9.6
Stereia Ellada	534,244	513,600	20,644	2.8	559,429	541,231	18,198	2.9	4.7
Peloponnisos	999,771	935,140	64,631	5.3	1,051,148	983,795	67,353	5.4	5.1
Attiki	3,818,338	3,805,609	12,729	20.3	3,732,336	3,721,862	10,474	19.3	-2.3
Voreio Aigaio*	353,364	353,364	0	1.9	286,460	286,460	0	1.5	-18.9
Notio Aigaio	3,253,653	3,211,252	42,401	17.3	3,348,242	3,301,280	46,962	17.3	2.9
Kriti	3,328,716	3,316,404	12,312	17.7	3,719,412	3,706,861	12,551	19.2	11.7

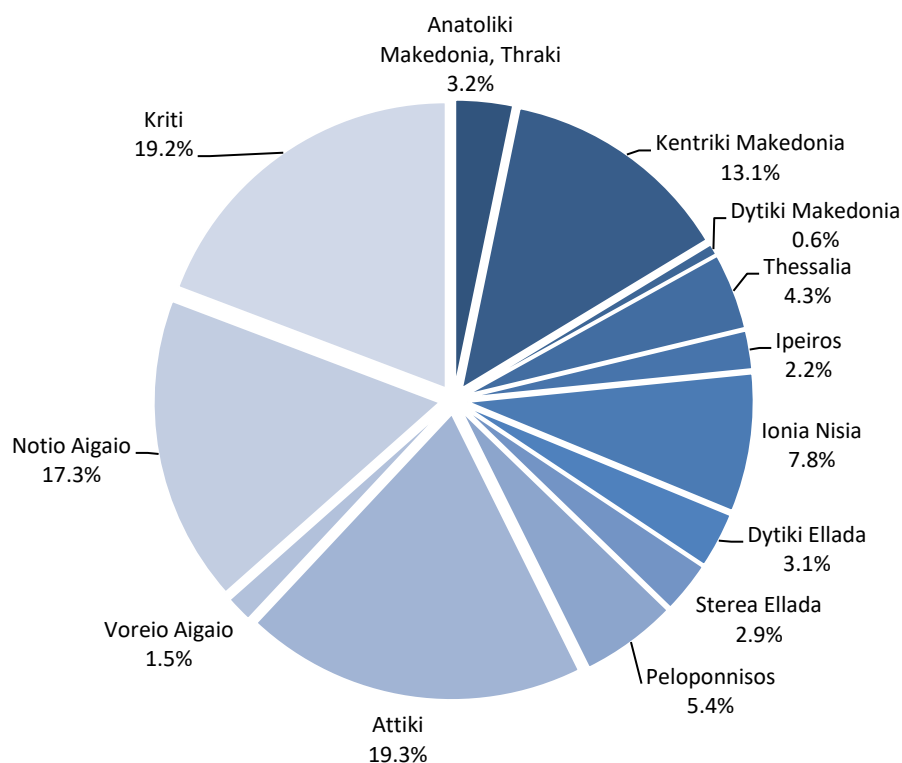
* The arrivals and nights spent refer to hotels, similar establishments and tourist campsites, which are registered to the Hellenic Chamber of Hotels. For these specific regions tourist campsites are not registered to the Hellenic Chamber of Hotels.

Table 5. Nights spent in hotels, similar establishments and tourist campsites, by Nuts 2 Region, 2015 and 2016

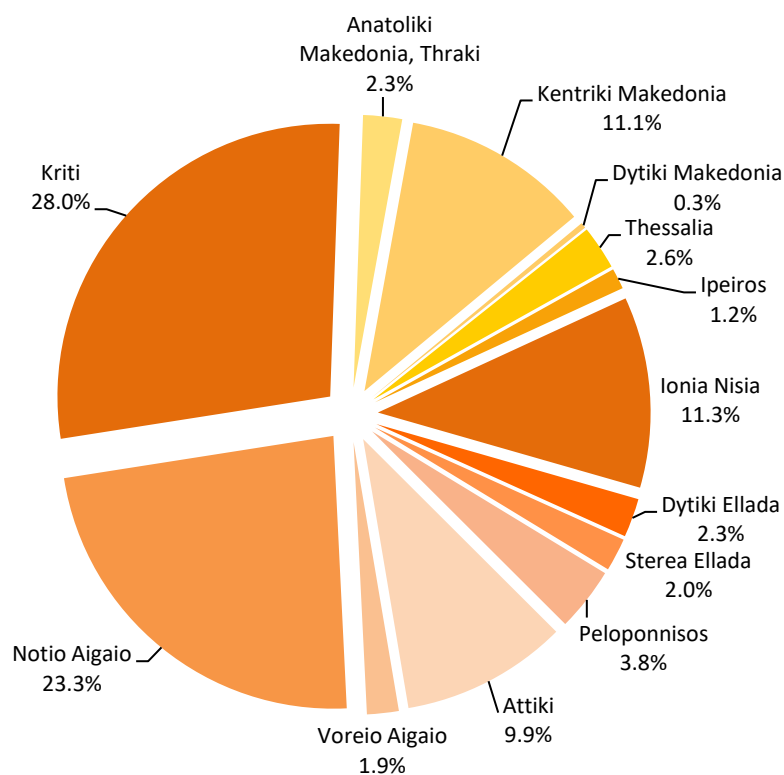
	2015				2016				Change % of total 2016/2015
	Total	Hotels and similar establishments	Tourist campsites	Percentage % of total	Total	Hotels and similar establishments	Tourist campsites	Percentage % of total	
Total	78,332,342	76,772,113	1,560,229	100.0	81,502,649	79,885,024	1,617,625	100.0	4.0
Anatoliki Makedonia, Thraki	1,904,821	1,798,036	106,785	2.4	1,878,918	1,770,206	108,712	2.3	-1.4
Kentriki Makedonia	8,834,256	8,194,395	639,861	11.3	9,051,345	8,367,559	683,786	11.1	2.5
Dytiki Makedonia*	288,976	288,976	0	0.4	269,903	269,903	0	0.3	-6.6
Thessalia	2,034,797	1,980,296	54,501	2.6	2,118,440	2,062,744	55,696	2.6	4.1
Ipeiros	943,076	892,226	50,850	1.2	1,002,859	956,624	46,235	1.2	6.3
Ionia Nisia	8,471,302	8,394,831	76,471	10.8	9,221,858	9,134,553	87,305	11.3	8.9
Dytiki Ellada	1,828,807	1,740,236	88,571	2.3	1,875,560	1,807,778	67,782	2.3	2.6
Stereia Ellada	1,404,435	1,342,734	61,701	1.8	1,593,827	1,535,314	58,513	2.0	13.5
Peloponnisos	2,740,140	2,479,313	260,827	3.5	3,081,753	2,804,252	277,501	3.8	12.5
Attiki	8,031,858	7,994,126	37,732	10.3	8,036,129	8,003,823	32,306	9.9	0.1
Voreio Aigaio*	1,764,524	1,764,524	0	2.3	1,530,785	1,530,785	0	1.9	-13.2
Notio Aigaio	18,946,411	18,807,465	138,946	24.2	18,992,125	18,833,749	158,376	23.3	0.2
Kriti	21,138,939	21,094,955	43,984	27.0	22,849,147	22,807,734	41,413	28.0	8.1

* The arrivals and nights spent refer to hotels, similar establishments and tourist campsites, which are registered to the Hellenic Chamber of Hotels. For these specific regions tourist campsites are not registered to the Hellenic Chamber of Hotels.

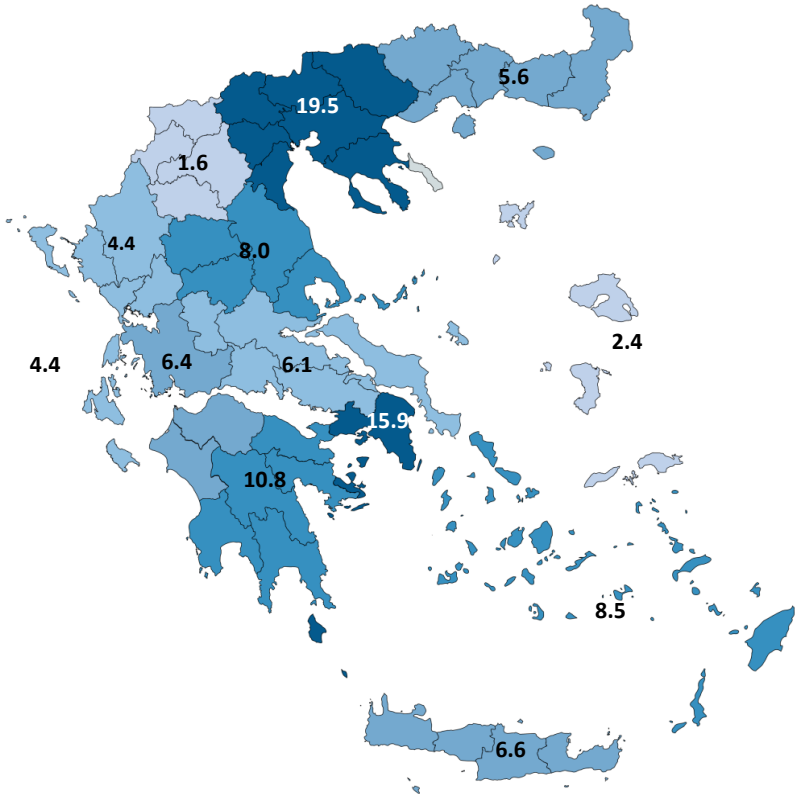
Graph 5. Percentage distribution of arrivals at hotels, similar establishments and tourist campsites, by NUTS 2 Region, 2016



Graph 6. Percentage distribution of nights spent in hotels, similar establishments and tourist campsites, by NUTS 2 Region, 2016



Graph 7. Percentage distribution of nights spent by residents in hotels, similar establishments and tourist campsites, by NUTS 2 Region, 2016



Graph 8. Percentage distribution of nights spent by non-residents in hotels, similar establishments and tourist campsites, by NUTS 2 Region, 2016

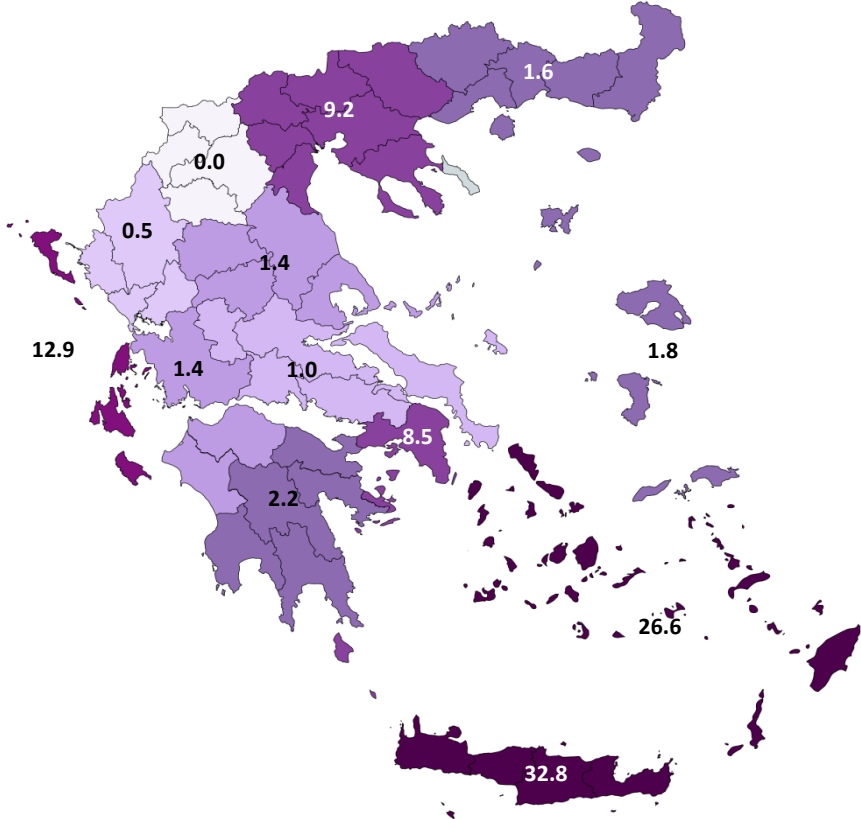


Table 6. Occupancy of bed-places that were in operation in hotels and similar establishments, by NUTS 2 Region, 2015 and 2016

	Occupancy of bed-places %	
	2015	2016
Annual occupancy	49.1	50.1
Anatoliki Makedonia, Thraki	36.3	35.5
Kentriki Makedonia	45.6	46.3
Dytiki Makedonia*	17.0	15.9
Thessalia	29.6	30.2
Ipeiros	26.4	27.9
Ionia Nisia	60.0	62.1
Dytiki Ellada	33.5	35.1
Stereia Ellada	23.2	25.6
Peloponnisos	27.4	30.5
Attiki	47.1	47.2
Voreio Aigaio*	38.9	33.4
Notio Aigaio	59.0	57.6
Kriti	61.9	65.2

Graph 9. Occupancy of bed-places that were in operation in hotels and similar establishments, by NUTS 2 Region, 2015 and 2016

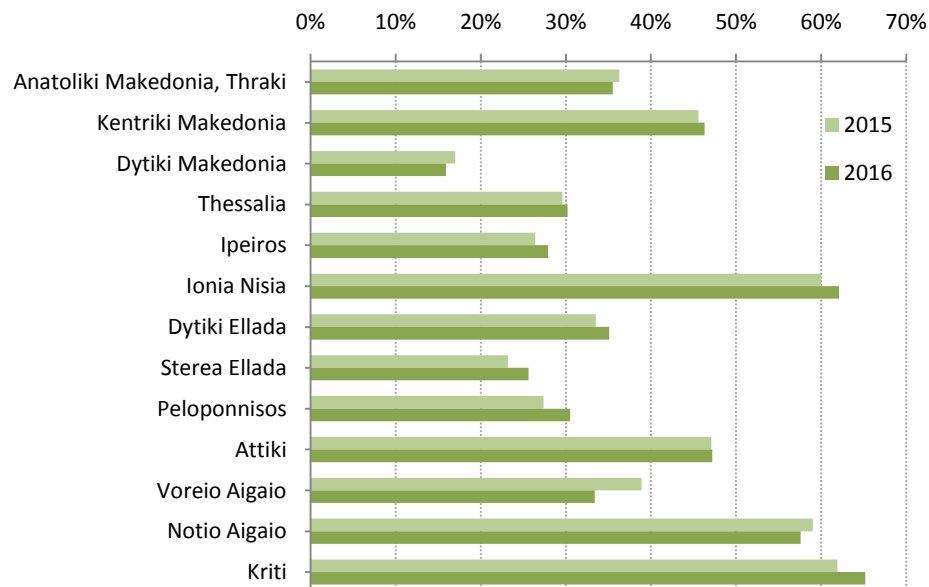


Table 7. Arrivals of non-residents at hotels, similar establishments and tourist campsites, by country of residence, 2015 and 2016

	2015				2016				Change % of total 2016/2015
	Total	Hotels and similar establishments	Tourist campsites	Percentage % of total	Total	Hotels and similar establishments	Tourist campsites	Percentage % of total	
Total	12,948,606	12,734,567	214,039	100.0	13,199,674	12,999,947	199,727	100.0	1.9
Europe	10,494,184	10,299,316	194,868	81.0	10,963,433	10,784,758	178,675	83.1	4.5
European Union	8,587,938	8,409,353	178,585	66.3	9,052,760	8,890,194	162,566	68.6	5.4
Austria	206,484	197,241	9,243	1.6	191,089	183,688	7,401	1.4	-7.5
Belgium	295,645	291,913	3,732	2.3	305,162	301,813	3,349	2.3	3.2
Bulgaria	243,741	222,943	20,798	1.9	252,230	228,088	24,142	1.9	3.5
France	1,077,032	1,039,674	37,358	8.3	1,057,568	1,026,453	31,115	8.0	-1.8
Germany	1,527,719	1,488,417	39,302	11.8	1,723,460	1,689,031	34,429	13.1	12.8
Denmark	210,718	209,245	1,473	1.6	232,910	231,414	1,496	1.8	10.5
Estonia	17,620	17,459	161	0.1	23,113	22,960	153	0.2	31.2
United Kingdom	1,661,246	1,656,014	5,232	12.8	1,841,946	1,836,930	5,016	14.0	10.9
Ireland	43,398	42,839	559	0.3	48,195	47,422	773	0.4	11.1
Spain	177,608	174,318	3,290	1.4	178,522	175,321	3,201	1.4	0.5
Italy	671,795	649,225	22,570	5.2	671,518	649,442	22,076	5.1	0.0
Croatia ⁽¹⁾	17,033	16,865	168	0.1	13,755	13,526	229	0.1	-19.2
Cyprus	203,579	203,146	433	1.6	226,751	226,306	445	1.7	11.4
Latvia	17,192	17,106	86	0.1	19,574	19,525	49	0.1	13.9
Lithuania	30,222	30,026	196	0.2	36,271	36,160	111	0.3	20.0
Luxembourg	16,797	16,762	35	0.1	17,317	17,252	65	0.1	3.1
Malta	7,941	7,900	41	0.1	7,804	7,779	25	0.1	-1.7
Netherlands	450,163	433,288	16,875	3.5	434,121	420,513	13,608	3.3	-3.6
Hungary	64,555	62,606	1,949	0.5	59,137	57,641	1,496	0.4	-8.4
Poland	457,465	452,094	5,371	3.5	461,777	457,252	4,525	3.5	0.9
Portugal	24,216	23,971	245	0.2	28,607	28,342	265	0.2	18.1
Romania	300,324	297,059	3,265	2.3	311,625	307,942	3,683	2.4	3.8
Slovak Republic	54,055	53,561	494	0.4	64,802	64,423	379	0.5	19.9
Slovenia	33,744	31,707	2,037	0.3	29,306	27,555	1,751	0.2	-13.2
Sweden	428,104	427,383	721	3.3	465,103	464,331	772	3.5	8.6
Czech Republic	197,410	194,740	2,670	1.5	188,855	187,009	1,846	1.4	-4.3
Finland	152,132	151,851	281	1.2	162,242	162,076	166	1.2	6.6
Total of other European countries	1,906,246	1,889,963	16,283	14.7	1,910,673	1,894,564	16,109	14.5	0.2
Iceland	5,768	5,737	31	0.0	6,915	6,896	19	0.1	19.9
Norway	251,674	251,404	270	1.9	263,387	263,107	280	2.0	4.7
Switzerland (incl. Liechtenstein)	223,988	218,037	5,951	1.7	221,582	216,362	5,220	1.7	-1.1
Russia	706,999	705,724	1,275	5.5	747,960	746,720	1,240	5.7	5.8
Turkey	252,285	250,969	1,316	1.9	260,873	258,365	2,508	2.0	3.4
Other European countries	465,532	458,092	7,440	3.6	409,956	403,114	6,842	3.1	-11.9
Africa	64,163	63,871	292	0.5	67,477	67,185	292	0.5	5.2
America	1,072,099	1,064,305	7,794	8.3	957,695	949,505	8,190	7.3	-10.7
North America	909,931	905,643	4,288	7.0	821,069	817,050	4,019	6.2	-9.8
USA	764,699	762,624	2,075	5.9	690,886	688,941	1,945	5.2	-9.7
Canada	145,232	143,019	2,213	1.1	130,183	128,109	2,074	1.0	-10.4
South and Central America	162,168	158,662	3,506	1.3	136,626	132,455	4,171	1.0	-15.8
Asia	1,060,563	1,059,070	1,493	8.2	962,419	960,818	1,601	7.3	-9.3
Japan	66,255	66,149	106	0.5	45,201	45,050	151	0.3	-31.8
People's republic of China	284,251	283,808	443	2.2	221,143	220,843	300	1.7	-22.2
Other Asian countries	710,057	709,113	944	5.5	696,075	694,925	1,150	5.3	-2.0
Oceania	247,943	238,375	9,568	1.9	232,731	221,797	10,934	1.8	-6.1
Australia	230,516	221,986	8,530	1.8	217,906	208,026	9,880	1.7	-5.5
New Zealand and other Oceanian territories	17,427	16,389	1,038	0.1	14,825	13,771	1,054	0.1	-14.9
Not specified	9,654	9,630	24	0.1	15,919	15,884	35	0.1	64.9

Table 8. Nights spent by non-residents in hotels, similar establishments and tourist campsites, by country of residence, 2015 and 2016

	2015				2016				Change % of total 2016/2015
	Total	Hotels and similar establishments	Tourist campsites	Percentage % of total	Total	Hotels and similar establishments	Tourist campsites	Percentage % of total	
Total	64,365,096	63,570,840	794,256	100.0	66,727,447	65,941,418	786,029	100.0	3.7
Europe	58,569,628	57,831,968	737,660	91.0	60,945,066	60,221,094	723,972	91.3	4.1
European Union	47,834,497	47,184,331	650,166	74.3	50,388,843	49,746,615	642,228	75.5	5.3
Austria	1,281,534	1,240,276	41,258	2.0	1,168,599	1,130,145	38,454	1.8	-8.8
Belgium	1,702,647	1,690,818	11,829	2.6	1,694,086	1,683,331	10,755	2.5	-0.5
Bulgaria	831,425	721,937	109,488	1.3	880,185	751,197	128,988	1.3	5.9
France	4,560,201	4,466,957	93,244	7.1	4,676,071	4,591,717	84,354	7.0	2.5
Germany	10,449,916	10,296,936	152,980	16.2	11,509,843	11,366,922	142,921	17.2	10.1
Denmark	1,323,585	1,316,497	7,088	2.1	1,451,371	1,443,571	7,800	2.2	9.7
Estonia	98,355	97,906	449	0.2	137,923	137,541	382	0.2	40.2
United Kingdom	10,340,946	10,322,939	18,007	16.1	11,379,389	11,359,655	19,734	17.1	10.0
Ireland	196,866	195,062	1,804	0.3	204,462	201,393	3,069	0.3	3.9
Spain	419,147	410,401	8,746	0.7	431,668	422,814	8,854	0.6	3.0
Italy	2,867,053	2,781,082	85,971	4.5	2,840,371	2,753,261	87,110	4.3	-0.9
Croatia ⁽¹⁾	50,411	50,056	355	0.1	43,228	42,641	587	0.1	-14.2
Cyprus	571,051	569,494	1,557	0.9	635,483	633,855	1,628	1.0	11.3
Latvia	93,386	93,261	125	0.1	112,819	112,717	102	0.2	20.8
Lithuania	163,761	163,309	452	0.3	202,102	201,777	325	0.3	23.4
Luxembourg	93,234	93,086	148	0.1	95,178	94,839	339	0.1	2.1
Malta	25,762	25,664	98	0.0	29,035	28,955	80	0.0	12.7
Netherlands	2,767,142	2,714,727	52,415	4.3	2,675,653	2,627,322	48,331	4.0	-3.3
Hungary	348,074	340,532	7,542	0.5	318,815	312,326	6,489	0.5	-8.4
Poland	2,682,978	2,662,748	20,230	4.2	2,735,492	2,718,941	16,551	4.1	2.0
Portugal	74,036	73,258	778	0.1	102,059	101,373	686	0.2	37.9
Romania	1,306,592	1,292,731	13,861	2.0	1,316,608	1,301,120	15,488	2.0	0.8
Slovak Republic	358,595	356,502	2,093	0.6	402,476	400,581	1,895	0.6	12.2
Slovenia	176,428	169,323	7,105	0.3	149,343	142,616	6,727	0.2	-15.4
Sweden	2,689,759	2,687,091	2,668	4.2	2,858,051	2,855,660	2,391	4.3	6.3
Czech Republic	1,386,671	1,377,860	8,811	2.2	1,299,835	1,292,266	7,569	1.9	-6.3
Finland	974,942	973,878	1,064	1.5	1,038,698	1,038,079	619	1.6	6.5
Total of other European countries	10,735,131	10,647,637	87,494	16.7	10,556,223	10,474,479	81,744	15.8	-1.7
Iceland	26,996	26,895	101	0.0	32,063	32,026	37	0.0	18.8
Norway	1,732,883	1,731,955	928	2.7	1,804,757	1,803,905	852	2.7	4.1
Switzerland (incl. Liechtenstein)	1,231,830	1,214,182	17,648	1.9	1,174,060	1,157,163	16,897	1.8	-4.7
Russia	4,953,527	4,946,302	7,225	7.7	5,133,567	5,127,264	6,303	7.7	3.6
Turkey	466,853	464,320	2,533	0.7	510,345	504,311	6,034	0.8	9.3
Other European countries.	2,323,042	2,263,983	59,059	3.6	1,901,431	1,849,810	51,621	2.8	-18.1
Africa	206,429	205,312	1,117	0.3	217,072	215,925	1,147	0.3	5.2
America	2,384,440	2,360,902	23,538	3.7	2,228,357	2,204,144	24,213	3.3	-6.5
North America	2,012,906	2,000,222	12,684	3.1	1,902,331	1,890,428	11,903	2.9	-5.5
USA	1,670,502	1,664,244	6,258	2.6	1,591,059	1,585,514	5,545	2.4	-4.8
Canada	342,404	335,978	6,426	0.5	311,272	304,914	6,358	0.5	-9.1
South and Central America	371,534	360,680	10,854	0.6	326,026	313,716	12,310	0.5	-12.2
Asia	2,571,627	2,568,197	3,430	4.0	2,707,890	2,702,992	4,898	4.1	5.3
Japan	123,316	123,104	212	0.2	91,737	91,404	333	0.1	-25.6
People's republic of China	438,880	437,964	916	0.7	364,688	364,075	613	0.5	-16.9
Other Asian countries	2,009,431	2,007,129	2,302	3.1	2,251,465	2,247,513	3,952	3.4	12.0
Oceania	594,031	565,601	28,430	0.9	564,345	532,669	31,676	0.8	-5.0
Australia	551,876	526,465	25,411	0.9	528,502	499,962	28,540	0.8	-4.2
New Zealand and other Oceanian territories	42,155	39,136	3,019	0.1	35,843	32,707	3,136	0.1	-15.0
Not specified	38,941	38,860	81	0.1	64,717	64,594	123	0.1	66.2

EXPLANATORY NOTES

Arrivals and nights spent at hotels, similar establishments and tourist campsites	Data on arrivals and nights spent at hotels, similar establishments and tourist campsites are collected from a monthly census survey. Each establishment fills in a questionnaire, for every month that it is in operation. It is mandatory for all hotels, similar establishments and tourist campsites to participate in the survey.
Legal frame	The survey is conducted pursuant to Regulation 692/2011 of the European Parliament and of the Council.
Reference unit	Data refer to all establishments (hotels, similar establishments and tourist campsites) that are registered in the Hellenic Chamber of Hotels. ELSTAT receives the register every three months and subsequently it updates its register that is related to the survey.
Coverage	The results of the survey refer to about 80% of the total bed-places that are available. The reason why there is no estimation and projection of the results to 100% of the reference population is the fact that there is no information on the exact months during which each establishment is in operation. The lack of this information makes it impossible to make this estimation for every month and hence for the total of the year.
Data dissemination	Final annual data are published in September of the following year. As regards the annual data there is a press release and detailed tables.
Reference period	January - December 2016 (Final data).
Definitions	<p><u>Resident</u>: every person, regardless of citizenship, that has resided in Greece for at least a year, or has arrived in Greece with the intention to reside in the country for at least 1 year.</p> <p><u>Non-resident</u>: every person, regardless of citizenship, that is not considered to be resident.</p> <p><u>Arrivals</u>: The arrivals at the establishments are calculated for every person separately. The data refer to the total number of persons and not to the total number of rooms that were occupied. Only the persons that had at least one overnight stay at the establishment are counted.</p> <p><u>Nights spent</u>: The nights are calculated for every person separately. The data refer to the total number of nights spent by every person and not to the total number of nights spent in every room.</p> <p><u>Occupancy of bed-places</u>: The monthly occupancy of bed-places is calculated on the basis of the number of the bed-places, as reported by each establishment. The rate refers to the occupancy that was accomplished, as compared with the maximum occupancy that is expected according to the available bed-places.</p> <p>The occupancy of the period is the result of the average occupancy rates of every month of the period, weighted by the bed-places that were in operation for each month.</p>
Methodology	<p>This is a monthly census survey. The data come from the establishments, which fill in a questionnaire (by paper form or on-line application) for every month that each establishment is in operation. During the year ELSTAT updates regularly the register of the hotels, similar establishments and tourist campsites, so that the data refer to the actual number of establishments that are in operation. Moreover, regular reminders for the submission of the data are sent to the establishments, so as ELSTAT can gather as much data as possible.</p> <p>The provisional data, for the period January – September, are based on the data collected from the establishments that responded to the survey and on the estimation of the arrivals and nights spent, taking into account the trend derived from a common sample of establishments and campsites in comparison with the previous year.</p>
References	More information on the survey is available on the web-page of the Hellenic Statistical Authority (www.statistics.gr), Section: Industry, Commerce, Services, Transportations, Tourism. "Hotels, similar establishments and campsites occupancy".