



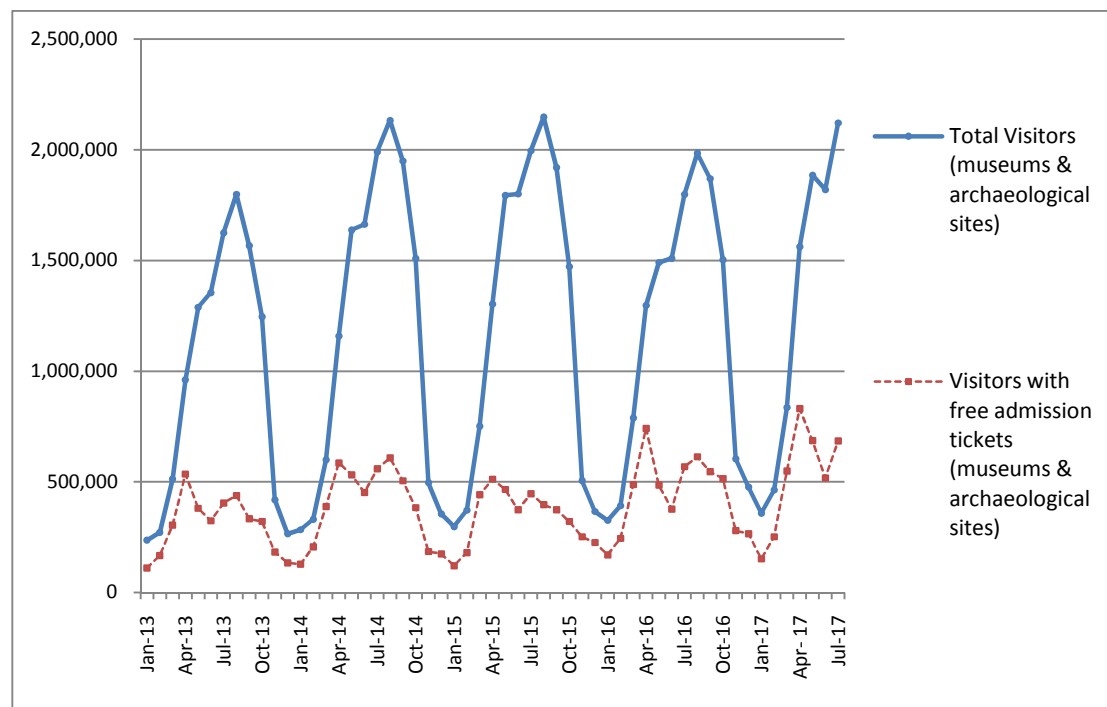
## PRESS RELEASE

### SURVEY ON MUSEUMS AND ARCHAEOLOGICAL SITES ATTENDANCE JULY 2017

The Hellenic Statistical Authority (ELSTAT) announces the results of the *Survey on Museums and Archaeological Sites Attendance* for July 2017. More specifically:

- In July 2017 compared with the corresponding month of 2016, Museums experienced a 17.0% increase in the number of visitors and a 15.7% increase in the number of free admission visitors as well as a 17.0% increase in their receipts (Table 1).
- In July 2017 compared with the corresponding month of 2016, the number of visitors at Archaeological sites recorded an increase of 18.3%, while an increase of 22.9% was observed in the number of free admission visitors and a 17.8% increase in the corresponding receipts (Table 1).
- During the seven-month period from January to July 2017, an increase of 17.8% was observed in the number of visitors of Museums, while an increase of 16.4% was recorded in the number of free admission visitors and a 22.4% increase in the relevant receipts, in comparison with the corresponding period of 2016 (Table 2).
- As regards Archaeological sites, during the seven-month period from January to July 2017, an increase of 19.6% was recorded in the number of visitors, while a 21.4% increase was observed in the number of free admission visitors and a 20.2% increase in the relevant receipts, in comparison with the corresponding period of 2016 (Table 2).

**Graph 1: Visitors of Museums and Archaeological sites (Jan 2013 – July 2017)**



**Information:**

Social Statistics Division

Section of Culture and Sports statistics,

Argyro Pateraki (Tel: +30 213 1352129, e-mail: [ar.pateraki@statistics.gr](mailto:ar.pateraki@statistics.gr))

**TABLE 1: VISITORS OF MUSEUMS AND ARCHAEOLOGICAL SITES - TOTAL RECEIPTS  
(JULY 2016 & JULY 2017)**

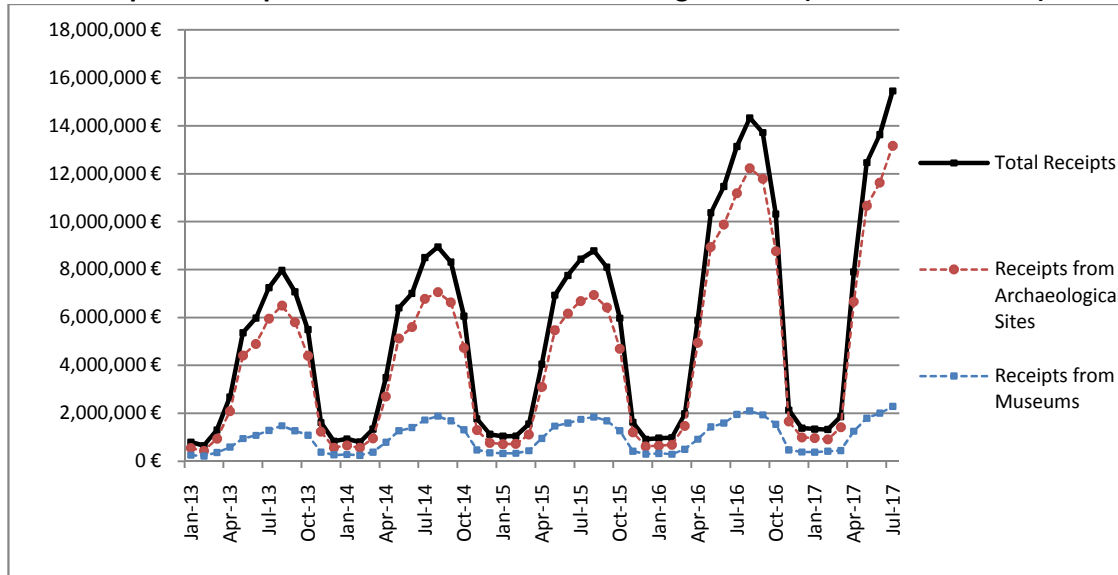
<b>I. VISITORS</b>			
<b>Museums and Archaeological sites</b>	<b>2016</b>	<b>2017</b>	<b>Change 2017/2016</b>
<b>Total number of visitors (A+B)</b>	<b>1,798,830</b>	<b>2,121,488</b>	<b>17.9%</b>
<b>A. Museums (C+E)</b>	<b>510,555</b>	<b>597,205</b>	<b>17.0%</b>
Acropolis Museum	160,986	187,573	16.5%
National Archaeological	48,125	55,169	14.6%
Ancient Olympia	13,618	15,600	14.6%
Palace of the Grand Master (Rhodes)	43,058	38,185	-11.3%
Herakleion Archaeological (Crete)	62,035	66,431	7.1%
White Tower	23,972	29,574	23.4%
Delphi	17,405	20,287	16.6%
Other museums	141,356	184,386	30.4%
<b>B. Archaeological Sites (D+F)</b>	<b>1,288,275</b>	<b>1,524,283</b>	<b>18.3%</b>
Epidavros <sup>(1)</sup>	46,043	54,811	19.0%
The Acropolis of Mycenae & Atreus' Treasure	37,818	46,493	22.9%
The Acropolis of Athens <sup>(2)</sup>	228,391	381,540	-
Sounio	26,213	31,046	18.4%
The Acropolis of Lindos	80,560	76,936	-4.5%
Royal Tombs of Vergina	14,099	16,765	18.9%
Ancient Olympia	58,835	72,000	22.4%
Knossos (Crete)	110,851	108,338	-2.3%
Phaistos (Crete)	11,487	11,355	-1.1%
Ancient Korinthos <sup>(1)</sup>	15,440	18,897	22.4%
Mystras <sup>(1)</sup>	14,091	16,133	14.5%
Delphi	31,934	39,504	23.7%
Other archaeological sites	612,513	650,465	6.2%
<b>II. VISITORS WHO PAID TICKET</b>			
	<b>2016</b>	<b>2017</b>	<b>Change 2017/2016</b>
<b>Total number of visitors who paid ticket (C+D)</b>	<b>1,230,665</b>	<b>1,436,830</b>	<b>16.8%</b>
C. Museums	318,483	374,894	17.7%
D. Archaeological sites	912,182	1,061,936	16.4%
<b>III. VISITORS WITH FREE ADMISSION TICKETS</b>			
	<b>2016</b>	<b>2017</b>	<b>Change 2017/2016</b>
<b>Total number of visitors with free admission ticket (E+F)</b>	<b>568,165</b>	<b>684,658</b>	<b>20.5%</b>
E. Museums	192,072	222,311	15.7%
F. Archaeological sites	376,093	462,347	22.9%
<b>IV. RECEIPTS (euros)</b>			
	<b>2016</b>	<b>2017</b>	<b>Change 2017/2016</b>
<b>Total Receipts (G+H)</b>	<b>13,134,067.00</b>	<b>15,452,761.00</b>	<b>17.7%</b>
G. Museums	1,954,627.00	2,287,463.00	17.0%
H. Archaeological sites	11,179,440.00	13,165,298.00	17.8%

<sup>(1)</sup> Flat rate ticket, valid both for the museum and the archaeological site

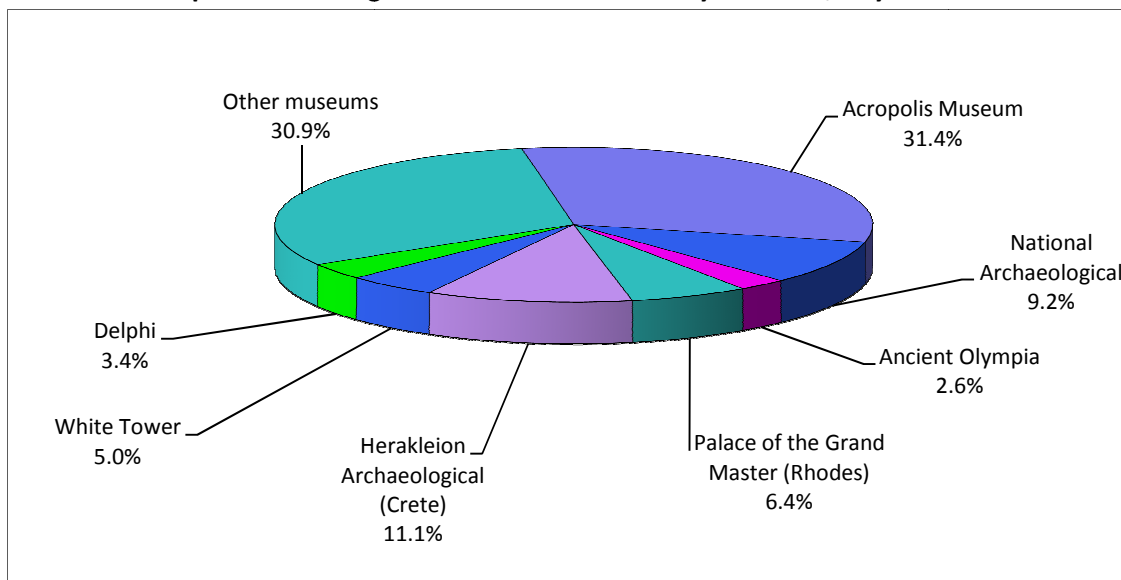
<sup>(2)</sup> From May 2017 onwards, the data for the number of tickets in the archaeological site of the Acropolis of Athens include the tickets of the Ancient Theatre of Dionysos, therefore the data for the years 2016-2017 are not comparable.

The following graphs depict the evolution of the receipts (Graph 2), as well as the number of visitors by Museum and Archaeological Site (Graphs 3 and 4 respectively),

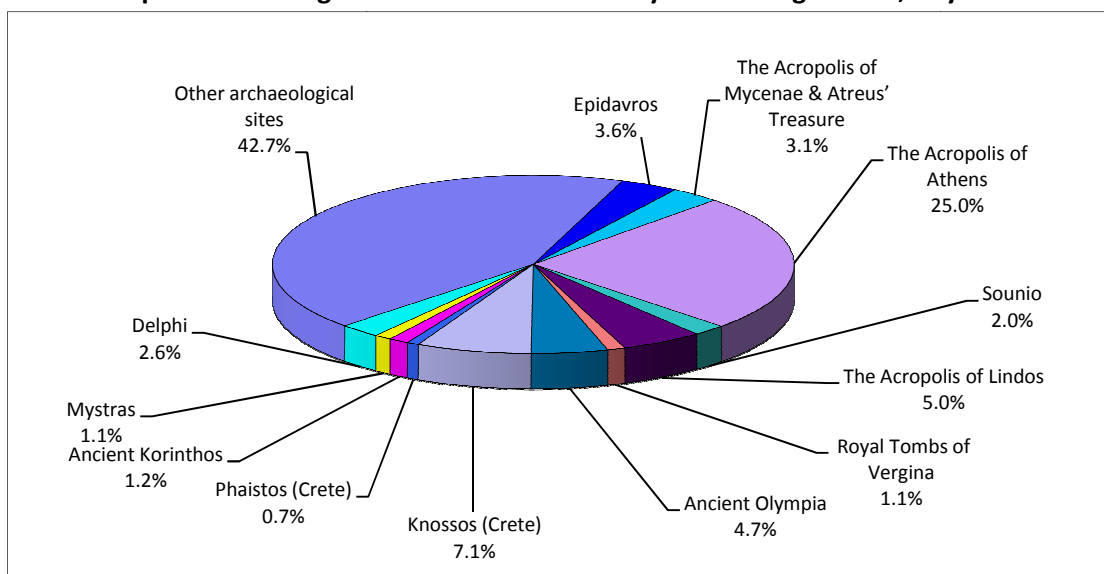
**Graph 2: Receipts from Museums and Archaeological Sites (Jan 2013 - Jul 2017)**



**Graph 3: Percentage distribution of Visitors by Museum, July 2017**



**Graph 4: Percentage distribution of Visitors by Archaeological site, July 2017**



**TABLE 2: VISITORS OF MUSEUMS AND ARCHAEOLOGICAL SITES - TOTAL RECEIPTS  
(2015, 2016 AND JANUARY- JULY 2016 & 2017)**

<b>I. VISITORS</b>					
Museums and Archaeological sites	2015	2016	JANUARY- JULY		change
			2016	2017	2017/2016
<b>Total number of visitors (A+B)</b>	<b>14,725,895</b>	<b>14,040,961</b>	<b>7,602,176</b>	<b>9,046,154</b>	<b>19.0%</b>
<b>A. Museums (C+E)</b>	<b>4,405,842</b>	<b>4,476,288</b>	<b>2,474,683</b>	<b>2,915,247</b>	<b>17.8%</b>
Acropolis Museum	1,510,615	1,406,096	788,529	911,054	15.5%
National Archaeological	476,754	447,093	254,744	314,552	23.5%
Ancient Olympia	135,972	124,136	76,166	87,575	15.0%
Palace of the Grand Master (Rhodes)	251,091	237,361	112,844	116,820	3.5%
Herakleion Archaeological (Crete)	201,657	355,237	203,482	205,817	1.1%
White Tower	273,659	290,192	150,566	150,434	-0.1%
Delphi	205,369	166,091	101,054	128,837	27.5%
Other museums	1,350,725	1,450,082	787,298	1,000,158	27.0%
<b>B. Archaeological Sites (D+F)</b>	<b>10,320,053</b>	<b>9,564,673</b>	<b>5,127,493</b>	<b>6,130,907</b>	<b>19.6%</b>
Epidavros <sup>(1)</sup>	443,565	375,437	218,676	283,877	29.8%
The Acropolis of Mycenae & Atreus' Treasure	402,565	342,854	205,482	232,325	13.1%
The Acropolis of Athens <sup>(2)</sup>	2,043,868	1,807,580	1,029,164	1,467,176	-
Sounio	236,285	222,800	129,917	148,979	14.7%
The Acropolis of Lindos	580,875	421,070	202,814	212,537	4.8%
Royal Tombs of Vergina	211,132	186,627	113,922	124,043	8.9%
Ancient Olympia	439,836	423,424	227,403	254,835	12.1%
Knossos (Crete)	632,288	611,455	319,013	312,138	-2.2%
Phaistos (Crete)	94,689	77,071	38,210	39,991	4.7%
Ancient Korinthos <sup>(1)</sup>	141,490	153,307	87,767	117,500	33.9%
Mystras <sup>(1)</sup>	117,010	114,293	64,905	70,342	8.4%
Delphi	319,754	290,705	167,399	199,442	19.1%
Other archaeological sites	4,656,696	4,538,050	2,322,821	2,667,722	14.8%
<b>II. VISITORS WHO PAID TICKET</b>					
	2015	2016	JANUARY- JULY		change
			2016	2017	2017/2016
<b>Total number of visitors who paid ticket (C+D)</b>	<b>10,544,249</b>	<b>8,749,957</b>	<b>4,529,497</b>	<b>5,374,962</b>	<b>18.7%</b>
C. Museums	2,867,641	2,406,665	1,271,110	1,513,749	19.1%
D. Archaeological sites	7,676,608	6,343,292	3,258,387	3,861,213	18.5%
<b>III. VISITORS WITH FREE ADMISSION TICKETS</b>					
	2015	2016	JANUARY- JULY		change
			2016	2017	2017/2016
<b>Total number of visitors with free admission ticket (E+F)</b>	<b>4,181,646</b>	<b>5,291,004</b>	<b>3,072,679</b>	<b>3,671,192</b>	<b>19.5%</b>
E. Museums	1,538,201	2,069,623	1,203,573	1,401,498	16.4%
F. Archaeological sites	2,643,445	3,221,381	1,869,106	2,269,694	21.4%
<b>IV. RECEIPTS (euros)</b>					
	2015	2016	JANUARY- JULY		change
			2016	2017	2017/2016
<b>Total Receipts (G+H)</b>	<b>56,224,962.00</b>	<b>86,647,638.00</b>	<b>44,765,937.00</b>	<b>53,979,904.00</b>	<b>20.6%</b>
G. Museums	12,385,213.00	13,448,464.00	7,013,142.00	8,583,212.00	22.4%
H. Archaeological sites	43,839,749.00	73,199,174.00	37,752,795.00	45,396,692.00	20.2%

(1) Flat rate ticket, valid both for the museum and the archaeological site

(2) From May 2017 the data for the number of tickets in the archaeological site of the Acropolis of Athens include the tickets of the Ancient Theatre of Dionysos, therefore these data are not comparable with the corresponding data of the previous years.

## EXPLANATORY NOTES

<b>Survey on Museums and Archaeological Sites Attendance</b>	The Survey on Museums and Archaeological Sites Attendance has been producing results since 1970, The survey collects data from the Archaeological Receipts Fund (ARF) of the Ministry of Culture and Sports concerning the number of visitors and the receipts from the tickets sold in the Museums and Archaeological sites of the country.
<b>Legal Framework</b>	The corresponding data for the Acropolis Museum are available from December 2009 onwards.
<b>Reference Period</b>	The survey is conducted since 1970 on a regular basis and it produces results on a monthly and yearly basis, in compliance with the Joint Ministerial Decision 15189/B379/73.
<b>Methodology and Definitions</b>	01/07/2017 to 31/07/2017.
	The Survey is conducted on a monthly basis from data collected from the Archaeological Receipts Fund (ARF) of the Ministry of Culture and Sports concerning on the number of visitors and the receipts from the tickets sold in the Museums and Archaeological sites of the country, ELSTAT tabulates the data on Museums and the Archaeological sites for the whole of the Country, by month and by year.

### Information on ticket payment

- From January 2002 onwards, the number of Museums' visitors includes both the visitors who have bought a ticket and the visitors with free admission ticket, From 16-06-1996 onwards, the Museums and the Archaeological sites all over Greece have a paid admission for all the visitors, Greeks and foreigners, all over the year, except in the following days, which are free admission days:
- National Holidays (25th of March and 28th of October)
- The first Sunday every month during the five month period from 1 November to 31 March
- The 6th of March (in memory of Melina Merkouri)
- The 18th of April (International Monuments Day)
- The 18th of May (International Museums Day)
- The 5th of June (International Environment Day)
- The last weekend of September, annually (European Heritage Days)

### Free admission tickets

The admission to Museums and Archaeological site is free for:

- Young people from EU-countries aged under 18 years, with current identification card to confirm their age,
- Students of Universities and of Higher and Technical Education Institutions or equivalent institutions of EU-countries, as well as of Tour Guide Training Institutes, with valid student identification card or International Student Identity Card (ISIC)
- Employees of the Hellenic Ministry of Culture, with valid professional identity card
- ICOM and ICOMOS cardholders
- Tour Guides with their current working identification card from the Ministry of Development
- Teachers accompanying pupils and students on primary, secondary and tertiary education institution tours
- Journalists with valid journalists' identification card
- Members of Associations and Societies of Friends of Museums and Archaeological Sites
- Official guests of the Greek Government, after relevant approval
- Escorts of blind persons and persons with disabilities
- Free admission cardholders
- Holders of the Culture Card

### Number of flat rate tickets

From April 1999 onwards, in some museums and the nearby archaeological sites, in addition to the ordinary ticket, a new "flat rate ticket" was established, which is valid for both the museum and the nearby archaeological site. The total number of these flat rate tickets for **July 2017** was **125,772**.

More information on the Survey on Museums and Archaeological Sites Attendance and detailed time series are available on: <http://www.statistics.gr/en/statistics/-/publication/SCI21/->