



HELLENIC REPUBLIC



HELLENIC STATISTICAL AUTHORITY

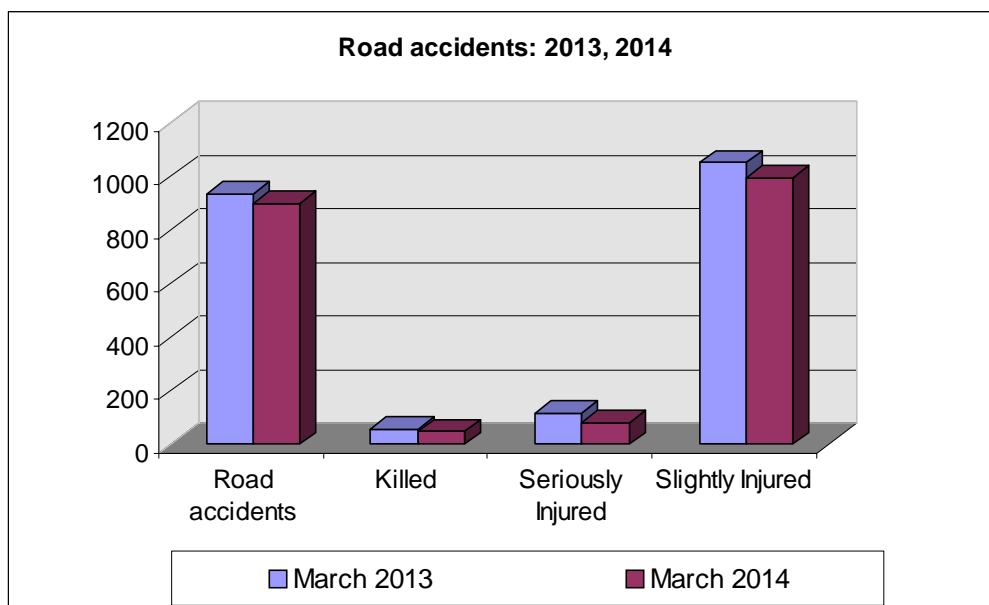
Piraeus, 30 May 2014

PRESS RELEASE

ROAD ACCIDENTS: March 2014

In March 2014 the road traffic accidents, which occurred in Greece resulting in injured or killed persons, decreased by 4% in comparison with the corresponding month of 2013 (899 road accidents in March 2014 against 936 road accidents in March 2013).

Among the casualties of the injury-causing accidents that occurred in March 2014, 48 persons were killed, 81 persons were seriously injured and 993 persons were slightly injured. In contrast, in March 2013 the corresponding figures were: 56 persons killed, 116 seriously injured and 1,050 slightly injured. Therefore, road accident casualties in March 2014 recorded a decrease by 14.3% for persons killed, by 30.2% for persons seriously injured and by 5.4% for persons slightly injured.



Contact:
Social Statistics Division
Justice and Public Order Statistics Section

K. Theodoraki
Tel : +30 213 1352771
Fax : +30 213 1352764

Table 1. Road accidents and casualties, by region (NUTS 2) and department - March 2013 and 2014

Region and Department	Road Accidents			Killed			Seriously Injured			Slightly Injured		
	2013	2014	%	2013	2014	%	2013	2014	%	2013	2014	%
Greece, total	936	899	-4.0%	56	48	-14.3%	116	81	-30.2%	1,050	993	-5.4%
Anatoliki Makedonia, Thraki (East Macedonia and Thrace)	36	19	-47.2%	2	1	-50.0%	5	4	-20.0%	41	21	-48.8%
Drama	5	3	-40.0%	0	0		0	0		5	2	
Evros	11	2	-81.8%	1	0		0	1		13	1	
Kavala	5	3	-40.0%	0	0		2	0		4	5	
Xanthi	9	5	-44.4%	0	1		2	3		14	7	
Rodopi	6	6	0.0%	1	0		1	0		5	6	
Kentriki Makedonia (Central Macedonia)	161	155	-3.7%	7	7	0.0%	8	3	-62.5%	199	192	-3.5%
Imathia	6	7	16.7%	0	2		1	1		12	6	
Thessaloniki	137	125	-8.8%	5	3		4	2		169	153	
Kilkis	4	2	-50.0%	0	0		0	0		4	3	
Pella	5	2	-60.0%	1	1		0	0		8	1	
Pieria	3	9	200.0%	0	0		3	0		1	14	
Serres	2	8	300.0%	0	1		0	0		2	8	
Chalkidiki	4	2	-50.0%	1	0		0	0		3	7	
Dytiki Makedonia (West Macedonia)	15	7	-53.3%	0	3	-	2	3	50.0%	17	9	-47.1%
Grevena	1	1	0.0%	0	0		0	0		1	2	
Kastoria	2	2	0.0%	0	1		0	0		2	3	
Kozani	12	2	-83.3%	0	0		2	2		14	4	
Florina	0	2	-	0	2		0	1		0	0	
Ipeiros (Epirus)	12	10	-16.7%	2	1	-50.0%	3	7	133.3%	17	7	-58.8%
Arta	3	1	-66.7%	0	1		0	0		3	0	
Thesprotia	2	4	100.0%	0	0		0	3		5	3	
Ioannina	4	3	-25.0%	0	0		1	1		4	3	
Preveza	3	2	-33.3%	2	0		2	3		5	1	
Thessalia (Thessaly)	22	24	9.1%	5	3	-40.0%	4	14	250.0%	23	19	-17.4%
Karditsa	6	3	-50.0%	1	1		1	0		8	4	
Larisa	13	11	-15.4%	3	0		2	7		12	11	
Magnisia	0	7	-	0	1		0	6		0	3	
Trikala	3	3	0.0%	1	1		1	1		3	1	
Ionioi Nisoi (Ionian Islands)	5	4	-20.0%	2	0	-100.0%	3	0	-100.0%	4	6	50.0%
Zakynthos	0	0	0.0%	0	0		0	0		0	0	
Kerkyra	2	2	0.0%	0	0		1	0		1	2	
Kefallinia	2	1	-50.0%	1	0		2	0		3	3	
Lefkada	1	1	0.0%	1	0		0	0		0	1	

Table 1. Continued

Region and Department	Road Accidents			Killed			Seriously Injured			Slightly Injured		
	2013	2014	%	2013	2014	%	2013	2014	%	2013	2014	%
Dytiki Ellas (West Greece)	37	35	-5.4%	5	7	40.0%	13	7	-46.2%	35	39	11.4%
Aitolia, Akarnania	15	13	-13.3%	2	4		4	2		17	14	
Achaia	13	13	0.0%	1	2		6	4		12	14	
Ileia	9	9	0.0%	2	1		3	1		6	11	
Sterea Ellas	40	24	-40.0%	5	3	-40.0%	11	5	-54.5%	36	23	-36.1%
Voiotia	8	6	-25.0%	2	1		0	2		8	6	
Evvoia	11	3	-72.7%	2	0		5	0		6	7	
Evrytania	2	0	-100.0%	1	0		0	0		1	0	
Fthiotida	13	13	0.0%	0	2		6	3		14	8	
Fokida	6	2	-66.7%	0	0		0	0		7	2	
Attiki (Attica)	538	551	2.4%	23	15	-34.8%	47	26	-44.7%	601	612	1.8%
Peloponnisos (Peloponnese)	32	42	31.3%	1	6	500.0%	9	7	-22.2%	44	41	-6.8%
Argolida	7	5	-28.6%	0	1		1	0		9	4	
Arkadia	5	10	100.0%	0	1		0	2		13	8	
Korinthia	9	13	44.4%	1	3		4	2		13	15	
Lakonia	3	5	66.7%	0	0		3	0		1	6	
Messinia	8	9	12.5%	0	1		1	3		8	8	
Voreio Aigaio (North Aegean)	6	4	-33.3%	1	0	-100.0%	2	1	-50.0%	3	4	33.3%
Lesvos	4	4	0.0%	1	0		2	1		1	4	
Samos	0	0	0.0%	0	0		0	0		0	0	
Chios	2	0	-100.0%	0	0		0	0		2	0	
Notio Aigaio (South Aegean)	15	12	-20.0%	1	1	0.0%	3	1	-66.7%	19	12	-36.8%
Dodekanisos	8	4	-50.0%	1	1		2	1		11	2	
Kyklades	7	8	14.3%	0	0		1	0		8	10	
Kriti (Crete)	17	12	-29.4%	2	1	-50.0%	6	3	-50.0%	11	8	-27.3%
Irakleio	7	0	-100.0%	1	0		3	0		4	0	
Lasithi	4	0	-100.0%	1	0		2	0		2	0	
Rethymni	2	2	0.0%	0	1		0	0		2	1	
Chania	4	10	150.0%	0	0		1	3		3	7	

Table 2. Road accidents and casualties, for the period January - March of the years 2012, 2013 and 2014

Period:	January - March			Percentage Change	
	2012	2013	2014	2013/2012	2014/2013
Road accidents	2,517	2,570	2,602	2.1	1.2
Killed	211	178	152	-15.6	-14.6
Seriously injured	262	254	198	-3.1	-22.0
Slightly injured	2,754	2,875	2,952	4.4	2.7
Casualties-Total	3,016	3,129	3,150	3.7	0.7

Diagram 1: Road accidents per 100,000 inhabitants

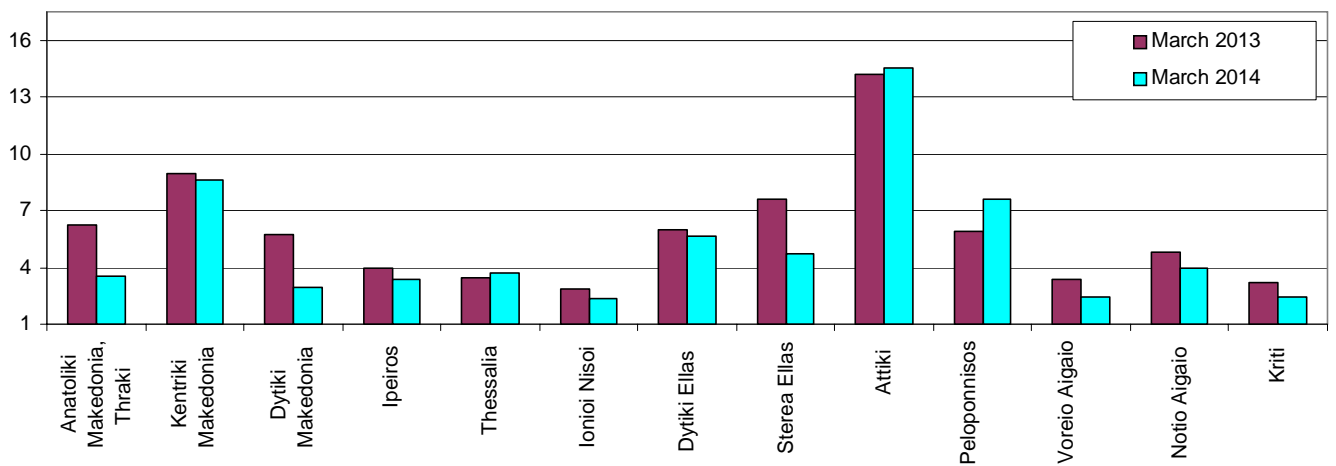


Diagram 2: Persons killed per 100,000 inhabitants

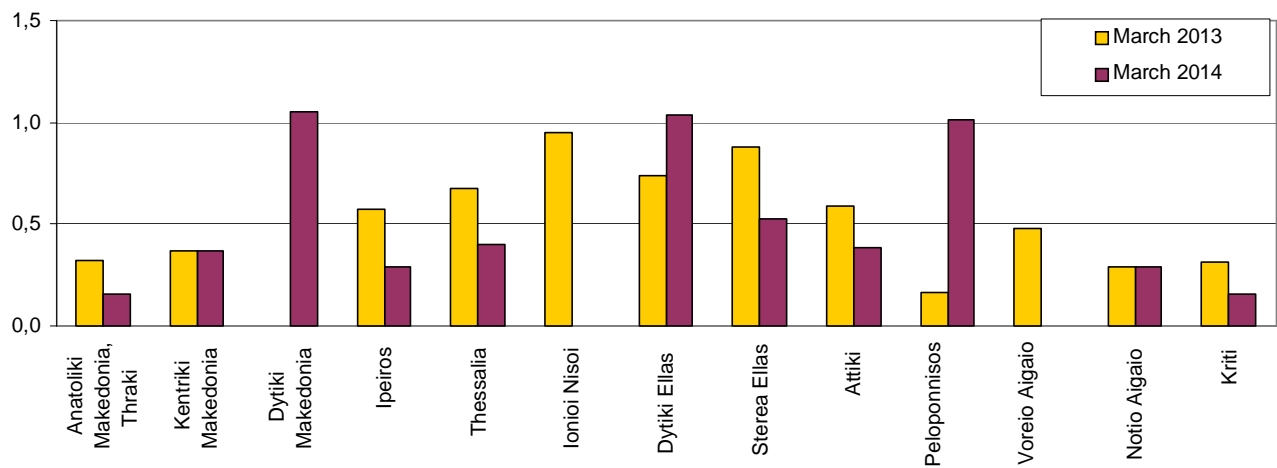


Diagram 3: Persons seriously injured per 100,000 inhabitants

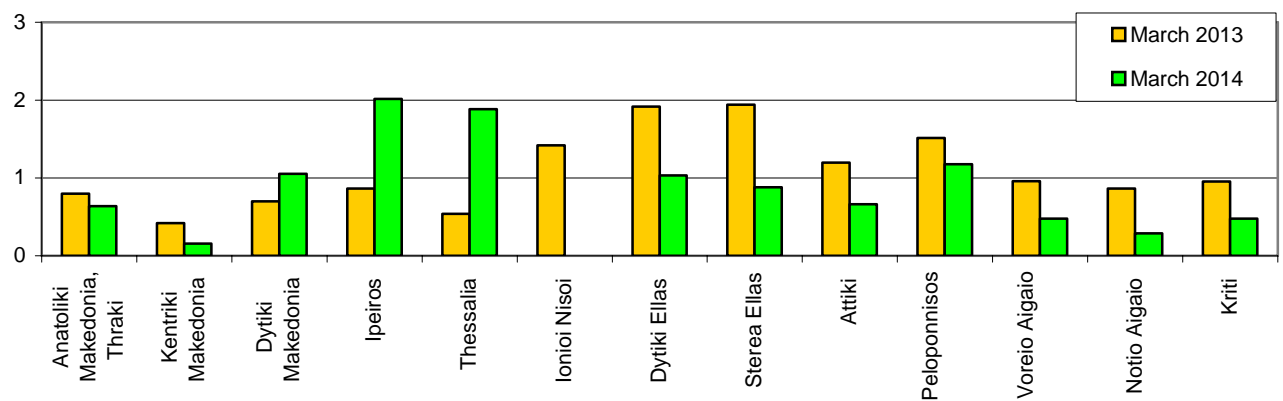
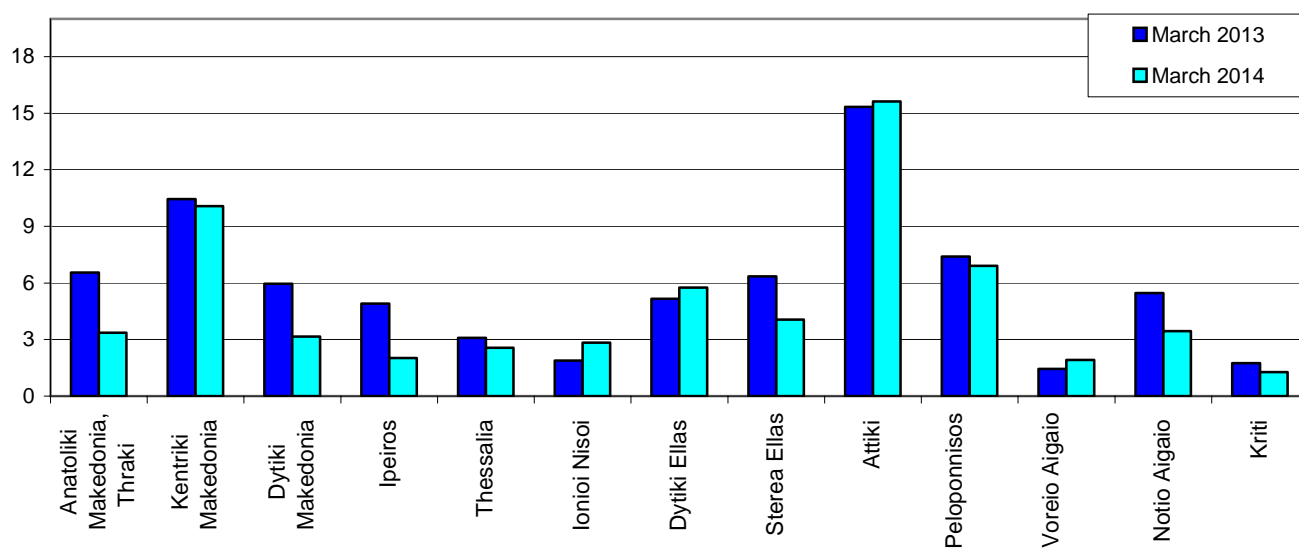


Diagram 4: Persons slightly injured per 100,000 inhabitants



EXPLANATORY NOTES

Survey on Road Accidents

The survey on road accidents is conducted on a monthly basis and it records, for each Department of Greece and for each month separately, the number of accidents by fatal and/or non-fatal accident, as well as the number of persons injured by categories (drivers, passengers, pedestrians). On a yearly basis, road accidents are further analyzed.

The competent agencies for filling in/collecting the questionnaires on road accidents are the local Police Authorities and the local Port Authorities of Greece.

The lower level of analysis for the place where an injury road accident occurred is the settlement (oikismos), which is described by a 8-digit geographic code. Data are collected on a monthly basis.

The main variables are the following: place of accident, kind of road, casualties, conditions of road surface and type of road.

Legal basis

The Survey on Road Traffic Accidents is governed by Council Decision 93/704/EC.

Reference Period

01.03.2014 to 31.03.2014

Availability of Results

Provisional data: 2 months after the accident
Final data: 1 year after the reference year

National Definitions

Road accident (injury accident): Any accident involving at least one road motor vehicle in motion on a public road or square to which the public has access (excluding yards, industrial sites or vehicle depot of public transport enterprises), resulting in at least one injured or killed person. Accidents with only material damages are not included.

Person killed: Any person killed immediately or dying within 30 days as a result of an injury accident (This national definition applies since 01.01.1996)

Person injured: Any person who sustained an injury as result of an injury accident, and who normally needs medical treatment.

Seriously injured: Any person who sustained an injury as result of an injury accident, such as brain damages, mutilation, multiple injuries, which March result in lack of awareness or which are life-threatening.

Slightly injured: Any person injured who sustained minor and not life-threatening injuries.

Vehicle: For the purposes of road accidents statistics, vehicles include motor vehicles, trolleybuses, motorcycles, bicycles, motorbikes, agricultural and road making machines, animal and hand-drawn vehicles. Railway vehicles are excluded, unless the road accident involves one of the aforementioned types of vehicles and therefore, railway vehicles are considered vehicles.

Methodology

The questionnaires of the survey are filled in by the local Police Authorities and the local Port Authorities as well.

References

More information about road accidents is available on ELSTAT's website and more specifically at the link: www.statistics.gr > Statistical Themes > Health – Social protection > Accidents > Road Traffic Accidents.

It should be noted that previous press releases and time series are available on ELSTAT's website: www.statistics.gr