



**HELLENIC REPUBLIC
MINISTRY OF FINANCE**



**GENERAL SECRETARIAT OF
THE NATIONAL STATISTICAL SERVICE
OF GREECE**

Pireaus, 12/3/2010

SURVEY OF BUILDING ACTIVITY: DECEMBER 2009

PRESS RELEASE

Decrease of the volume of Total Building Activity by 22,6%.

In December 2009 total Building Activity (private-public), in the whole country, which is calculated by the number of building permits, amounted to 5.007. This figure corresponds to 1.127,8 thousand m² of surface and 4.410,2 thousand m³ of volume, which shows a decrease of 2,8%, in the number of building permits, 16,6% in surface and 22,6% in volume as compared to the same month in 2008 (Table 1). Private Building Activity, in the whole country, summed to 4.967 building permits, which correspond to 1.100,6 thousand m² of surface and 4.304,7 thousand m³ of volume. As compared to the same month of 2008 (Table 2), there is a decrease in the number of building permits by 3,1%, in surface by 16,3% and in volume by 22,3%.

Public Building Activity in the whole country in December 2009, amounted to 40 building permits, which correspond to 27,2 thousand m² of surface and 105,5 thousand m³ of volume. The percentage contribution of Public Building Activity in the total building activity, in December 2009, is 2,4%.

During the period January-December 2009, the total amount of Building Activity (private-public) amounted to 56.205 building permits, which correspond to 12.826,1 thousand m² of surface and 48.859,6 thousand m³ of volume. In comparison to the same period in 2008 (Table 3), there was a decrease of 14,2% in the number of building permits, 24,1% in surface and 25,9% in volume.

During the period January - December 2009, the Private Building Activity in the whole country, indicated a decrease in the number of building permits by 14,3%, in surface by 25,4% and in volume by 27,6%, as compared to the same period of 2008 (Table 4).

The percentage contribution of the Public Building Activity in the total building volume, for the same period of 2009, is 4,0%.

Information:

*Directorate of Secondary Sector Statistics
Unit of Construction and Environment Statistics
Papanagnou Ioannna
Tel. : 210 485 2045
Fax : 210 485 2456
e-mail : papanag@statistics.gr*

Table 1. Total Building Activity (Private-Public), by Region, for the period of January - December in 2008 and 2009*

Region	Number of building permits			Surface (in thousand m ²)			Volume (in thousand m ³)		
	December 2008	2009	Change (%)	December 2008	2009	Change (%)	December 2008	2009	Change (%)
E. Makedonia and Thraki	244	256	4,9	77,1	53,8	-30,1	229,2	193,2	-15,7
Central Makedonia	658	622	-5,5	186,0	147,2	-20,9	805,3	622,6	-22,7
Western Makedonia	117	74	-36,8	42,8	13,7	-68,1	194,1	54,7	-71,8
Thessalia	307	293	-4,6	99,9	66,6	-33,4	492,1	236,4	-52,0
Ipiros	173	173	0,0	63,7	47,9	-24,9	282,6	171,1	-39,5
Ionian Islands	166	187	12,7	51,5	28,8	-44,1	183,4	101,3	-44,8
Western Greece	346	380	9,8	95,6	68,7	-28,1	385,9	229,7	-40,5
Central Greece	368	364	-1,1	68,4	67,2	-1,7	260,5	244,8	-6,1
Peloponnissos	427	397	-7,0	125,0	98,7	-21,0	598,4	388,8	-35,0
Attiki	1.456	1.438	-1,2	320,6	350,4	9,3	1.433,0	1.511,3	5,5
Northern Egeo	182	141	-22,5	25,0	27,4	9,9	99,4	101,4	2,0
Southern Egeo	339	349	2,9	79,1	57,9	-26,8	296,0	198,3	-33,0
Kriti	370	333	-10,0	117,7	99,6	-15,4	434,3	356,5	-17,9
Greece, Total	5.153	5.007	-2,8	1.352,2	1.127,8	-16,6	5.694,3	4.410,2	-22,6

* Temporary Data

Table 2. Total Building Activity by Region in December of 2008 and 2009*

Region	Number of building permits			Surface (in thousand m ²)			Volume (in thousand m ³)		
	December 2008	2009	Change (%)	December 2008	2009	Change (%)	December 2008	2009	Change (%)
E. Makedonia and Thraki	242	252	4,1	76,4	51,4	-32,7	226,3	183,5	-18,9
Central Makedonia	648	608	-6,2	165,5	139,0	-16,0	765,7	590,3	-22,9
Western Makedonia	115	71	-38,3	42,5	12,2	-71,3	190,7	49,2	-74,2
Thessalia	305	293	-3,9	93,6	66,6	-28,9	426,5	236,4	-44,6
Ipiros	172	171	-0,6	60,0	47,6	-20,8	265,7	169,9	-36,1
Ionian Islands	166	186	12,0	51,5	28,8	-44,1	183,4	101,3	-44,8
Western Greece	342	375	9,6	95,1	68,3	-28,2	384,1	228,1	-40,6
Central Greece	368	364	-1,1	68,4	67,2	-1,7	260,5	244,8	-6,1
Peloponnissos	423	393	-7,1	119,7	94,8	-20,8	577,8	375,4	-35,0
Attiki	1.454	1.438	-1,1	320,6	350,4	9,3	1.433,0	1.511,3	5,5
Northern Egeo	182	137	-24,7	25,0	26,7	7,1	99,4	98,8	-0,5
Southern Egeo	339	349	2,9	79,1	57,9	-26,8	296,0	198,3	-33,0
Kriti	368	330	-10,3	117,3	89,8	-23,4	432,9	317,4	-26,7
Greece, Total	5.124	4.967	-3,1	1.314,6	1.100,6	-16,3	5.542,0	4.304,7	-22,3

* Temporary Data

Table 3. Total Building Activity (Private - Public), by Region, for the period January -December in 2008 and 2009*

Region	Number of building permits			Surface (in thousand m ²)			Volume (in thousand m ³)		
	January-December		Change (%)	January-December		Change (%)	January-December		Change (%)
	2008	2009		2008	2009		2008	2009	
E. Makedonia and Thraki	3.190	2.958	-7,3	799,9	639,5	-20,1	3.062,9	2.359,7	-23,0
Central Makedonia	8.695	7.343	-15,5	2.816,0	1.895,5	-32,7	12.440,1	8.109,6	-34,8
Western Makedonia	1.208	1.055	-12,7	409,9	273,7	-33,2	1.694,6	1.076,9	-36,4
Thessalia	4.050	3.327	-17,9	1.214,5	855,2	-29,6	4.776,3	3.221,1	-32,6
Ipiros	2.229	2.040	-8,5	631,0	622,3	-1,4	2.424,4	2.363,1	-2,5
Ionian Islands	2.551	2.037	-20,1	511,0	361,7	-29,2	1.775,9	1.261,8	-28,9
Western Greece	4.433	4.427	-0,1	1.067,7	914,8	-14,3	4.182,9	3.416,8	-18,3
Central Greece	4.864	4.373	-10,1	1.190,0	1.044,1	-12,3	5.241,9	4.438,1	-15,3
Peloponnissos	5.485	4.642	-15,4	1.446,4	1.046,6	-27,6	5.324,2	3.745,0	-29,7
Attiki	18.551	15.347	-17,3	4.198,6	3.255,6	-22,5	15.612,2	12.259,9	-21,5
Northern Egeo	1.903	1.569	-17,6	311,8	201,5	-35,4	1.174,8	698,7	-40,5
Southern Egeo	3.892	3.383	-13,1	870,0	592,2	-31,9	3.002,3	1.943,6	-35,3
Kriti	4.423	3.704	-16,3	1.427,6	1.123,6	-21,3	5.213,2	3.965,3	-23,9
Greece, Total	65.474	56.205	-14,2	16.894,4	12.826,1	-24,1	65.925,8	48.859,6	-25,9

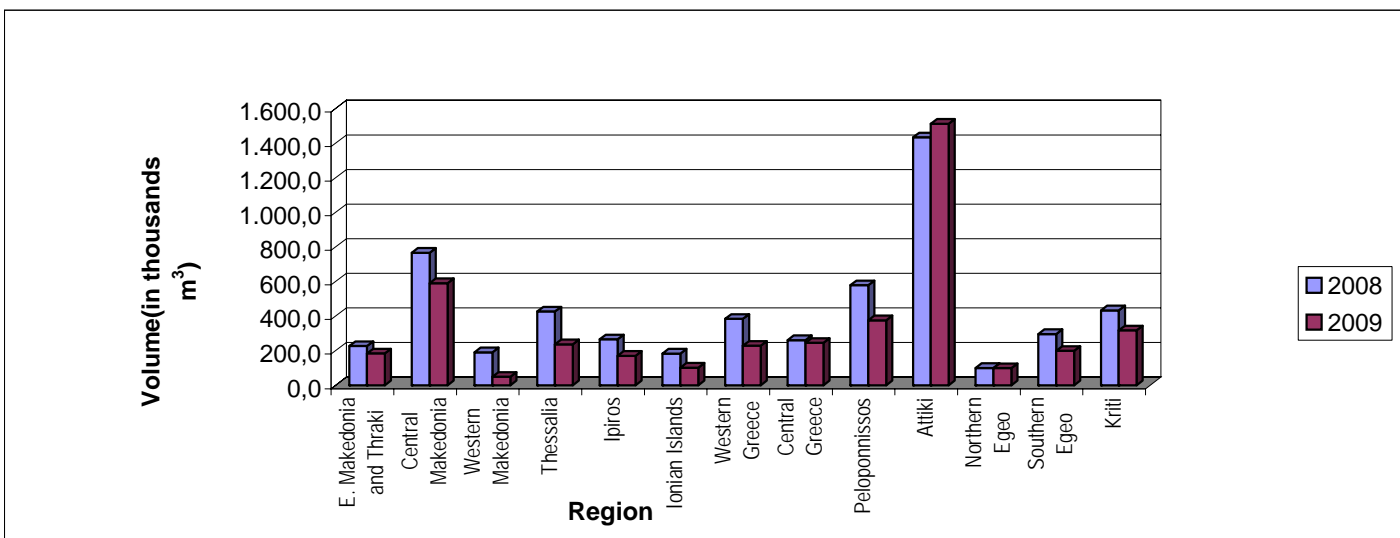
* Temporary Data

Table 4. Private Building Activity, by Region, for the period January - December of 2008 and 2009*

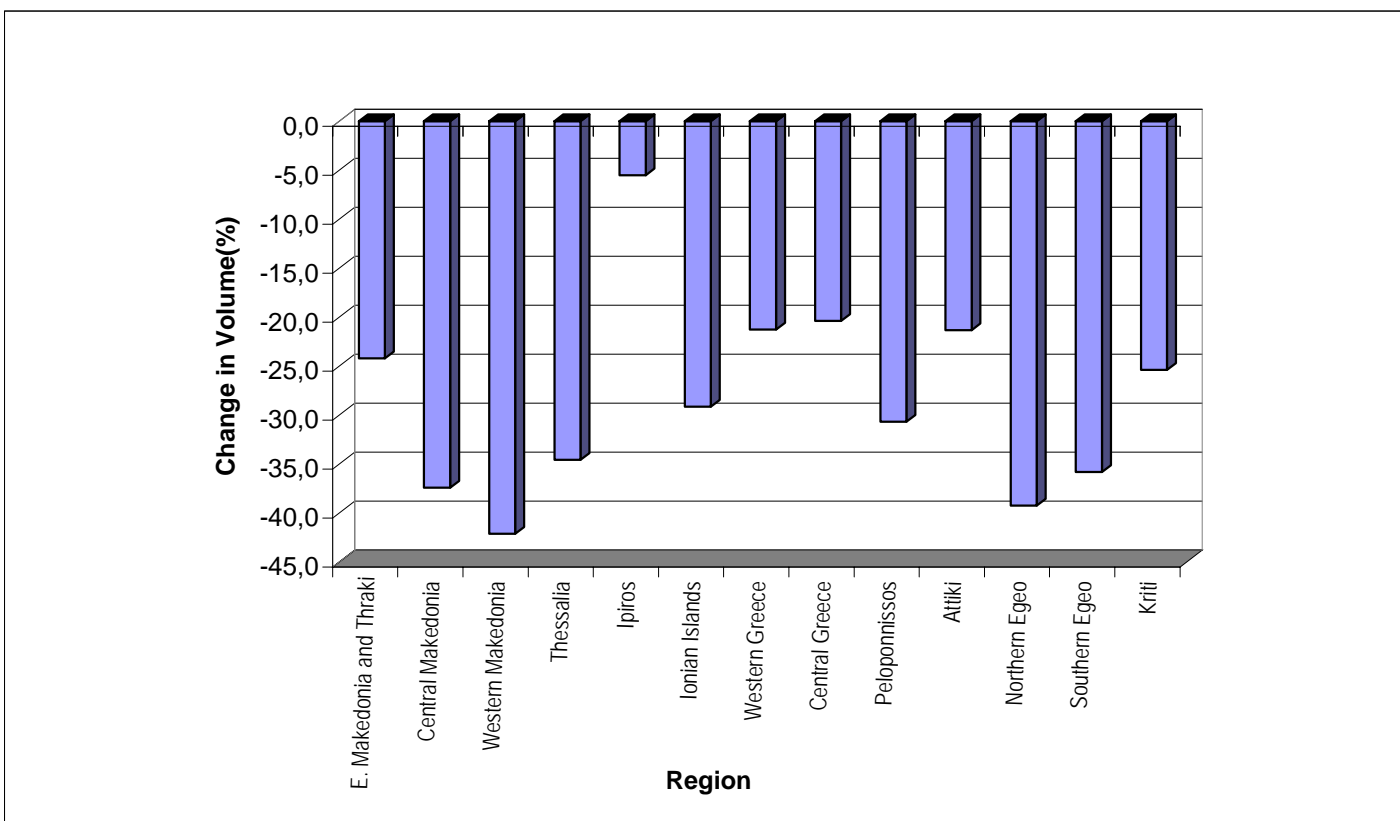
Region	Number of building permits			Surface (in thousand m ²)			Volume (in thousand m ³)		
	January-December		Change (%)	January-December		Change (%)	January-December		Change (%)
	2008	2009		2008	2009		2008	2009	
E. Makedonia and Thraki	3.140	2.898	-7,7	775,8	607,7	-21,7	2.939,2	2.227,7	-24,2
Central Makedonia	8.567	7.202	-15,9	2.744,5	1.787,9	-34,9	12.200,8	7.633,7	-37,4
Western Makedonia	1.188	1.022	-14,0	399,2	249,0	-37,6	1.634,6	945,7	-42,1
Thessalia	3.925	3.286	-16,3	1.192,9	814,6	-31,7	4.649,4	3.041,6	-34,6
Ipiros	2.208	2.007	-9,1	617,2	591,9	-4,1	2.370,1	2.239,6	-5,5
Ionian Islands	2.541	2.020	-20,5	508,1	357,9	-29,6	1.762,2	1.248,7	-29,1
Western Greece	4.414	4.397	-0,4	1.049,6	871,4	-17,0	4.102,9	3.229,6	-21,3
Central Greece	4.843	4.326	-10,7	1.169,2	983,0	-15,9	5.127,3	4.082,0	-20,4
Peloponnissos	5.449	4.595	-15,7	1.431,1	1.023,7	-28,5	5.265,6	3.649,3	-30,7
Attiki	18.513	15.327	-17,2	4.175,0	3.245,6	-22,3	15.515,3	12.204,9	-21,3
Northern Egeo	1.897	1.552	-18,2	300,3	195,0	-35,1	1.112,6	676,0	-39,2
Southern Egeo	3.881	3.372	-13,1	864,4	584,9	-32,3	2.981,2	1.912,9	-35,8
Kriti	4.400	3.675	-16,5	1.409,7	1.093,1	-22,5	5.138,6	3.833,0	-25,4
Greece, Total	64.966	55.679	-14,3	16.637,2	12.405,8	-25,4	64.799,7	46.924,5	-27,6

* Temporary Data

Graph 1. Private Building Activity, per region, in December of 2008 and 2009



Graph 2. Private Building Activity, Rate of change (%) of building volume, per region, for the period January - December, in 2008 and 2009



EXPLANATORY NOTES

Building Activity Survey	The Building Activity Survey provides data on monthly and yearly basis, since 1964. The purpose of this survey is to register the total amount of building permits issued by the relevant administrative authorities, which are devolved to complete the questionnaire. The survey covers all the features of building activity such as the type of building permit, the type of construction, the type and the characteristics of the building and its complementary areas, as well as building usage, surface, volume and value.
Legal Framework	The survey is totally harmonized with the European legislation. The primary legislative act is Regulation (EU) 1165/1998, as it was amended according to Regulation (EU) 1158/2005.
Reference Period	From 01/12/2009 to 31/12/2009.
Coverage	The survey is exhaustive and covers the total amount of issued building permits across the country.
Definitions	<p>Building Permit refers to all types of building permits. These are permits for new building or addition, repair, renovation, demolition, legalization, amendment and modification of a building. The denotation of built-property is equal to the building.</p> <p>Building is regarded as every permanent and independent structure, which has walls and a roof and consists of one or more rooms and complementary areas. As a rule, buildings feature four walls. However, a construction that is open from one or even two sides will be considered a building, as long as it has a roof.</p> <p>New building is any built-property raised on an uncovered site or in place of an old building that was demolished.</p> <p>Building Addition is considered to be every construction that adds building volume (space) to an existing building, be it in surface, height or a combination of both and creates a residence, a shop or both.</p> <p>Building volume (the net building volume) refers to the area that is included between the external surface of the external walls, the lowest level (the basement or the sub-basement, if it exists) and the roof of the building. If there is an open ground floor not enclosed within walls between the lower floor and the roof, its volume is taken into account. The relevant authorities calculate the volume of the building during the issuing of the building permit.</p> <p>Surface of new-built property is considered to be the sum of each floor space along with the outer space of the outer walls.</p>
General remark	<p>Any delineation that may occur between the sum of sub totals and the totals is due to rounding.</p> <p>Surface of new-built property is considered to be the sum of each floor space along with the outer space of the outer walls.</p>
References	More information (tables, questionnaires, methodology) with regards to the Building Activity Survey can be found in the NSSG's web-site: www.statistics.gr , under the links: Statistical Themes à Building and Constructions à Building Activity or Constructions.