



HELLENIC REPUBLIC



MINISTRY OF ECONOMY AND FINANCE



**GENERAL SECRETARIAT OF  
THE NATIONAL STATISTICAL SERVICE  
OF GREECE**

Piraeus, 17 April 2007

## **PRESS RELEASE**

### **Agricultural Price Indices (API)<sup>1,2</sup>**

**February 2007**

The Agricultural Price Indices (API) provide information on trends in selling prices of agricultural products (Output Price Index) and in purchase prices of the means of agricultural production (Input Price Index).

#### **Output Price Index (excluding subsidies)**

The Output Price Index in February 2007, as compared to February 2006, decreased by 4,8%. A year earlier, the index was increased by 5,5%.

The Output Price Index in February 2007, as compared to January 2007, decreased by 0,8%. A year earlier, the index was increased by 2,6%.

---

<sup>1</sup>The revised Agricultural Price Indices (API-Output and Input Price Indices in Agriculture and Livestock) use the concept of "market price" which is defined as the prices received or paid by the producer excluding the deductible VAT and subsidies (the latter since 1995 and onwards).

<sup>2</sup> The revised API is calculated on the basis of the Laspeyres formula with base year 2000=100,0. The output weighting coefficients have been calculated on the basis of the average sales value of products produced for the years 1999 and 2000, while the input weighting coefficients take into account the total expenditure payment of the year 2000.

### Annual rates<sup>3</sup>

Output Prices in February 2007, as compared to February 2006, decreased by 4,8%, due to the annual changes of the main groups of prices, as following:

- ❑ Crop production goods prices, decreased by 6,8%
- ❑ Animal production goods prices, grew by 1,1%

### Monthly rates<sup>4</sup>

Output Prices in February 2007, as compared to January 2007, decreased by 0,8%, due to the monthly changes of the main groups of prices, as following:

- ❑ Crop production goods prices, decreased by 0,7%
- ❑ Animal production goods prices, decreased by 1,0%

## Input Price Index

The Input Price Index in February 2007, as compared to February 2006, recorded a rise of 5,1%. A year earlier, the index was increased by 4,5%.

The Input Price Index in February 2007, as compared to January 2007, was increased by 1,7%. A year earlier, the index was also increased by 0,6%.

### Annual rates<sup>5</sup>

Input Prices in February 2007, as compared to February 2006, rose by 5,1%, due to the annual changes of the main groups of prices, as following:

- ❑ Intermediate consumption goods prices, grew by 6,0%
- ❑ Capital formation goods prices, grew by 2,4%

---

[3,5] The annual rates measure the changes of output and input producer prices in agricultural and livestock production, between the current month and the same month of the previous year.

[4,6] The monthly rates measure the changes of output and input producer prices in agricultural and livestock production, between the two latest months.

## Monthly rates<sup>6</sup>

Input Prices in February 2007, as compared to January 2007, grew by 1,7%, due to the monthly changes of the main groups of prices, as following:

- ❑ Intermediate consumption goods prices, grew by 2,1%
- ❑ Capital formation goods prices, grew by 0,4%

*More information on the rates of change of the API are presented in the annexed tables (1,2) and graphs (1,2).*

For further information on data:

Konstantinos Thomas

Tel: 0030 210 4852121

Fax: 0030 210 4852714

E-mail : [conthom@statistics.gr](mailto:conthom@statistics.gr)

**TABLE 1: Output Price Indices in Agricultural and Livestock Production****I. Annual changes of the overall production and by main groups  
(2000=100,0)**

	February		Change %	February		Change %
	2007	2006		2006	2005	
Overall production	130,5	137,0	-4,8	137,0	129,9	5,5
Crop production	135,3	145,1	-6,8	145,1	137,3	5,7
Animal production	118,9	117,7	1,1	117,7	111,9	5,1

**II. Monthly changes of the overall production and by main groups  
(2000=100,0)**

	February	January	Change %	February	January	Change %
	2007	2007		2007	2007	
Overall production	130,5	131,5	-0,8	137,0	133,6	2,6
Crop production	135,3	136,2	-0,7	145,1	140,0	3,6
Animal production	118,9	120,1	-1,0	117,7	118,2	-0,5

**TABLE 2: Input Price Indices in Agricultural and Livestock Production****I. Annual changes of the Means of production and by main groups  
(2000=100,0)**

	February		Change %	February		Change %
	2007	2006		2006	2005	
Means of production	132,5	126,0	5,1	126,0	120,6	4,5
Intermediate consumption	134,9	127,2	6,0	127,2	121,5	4,7
Capital formation	125,6	122,6	2,4	122,6	118,2	3,8

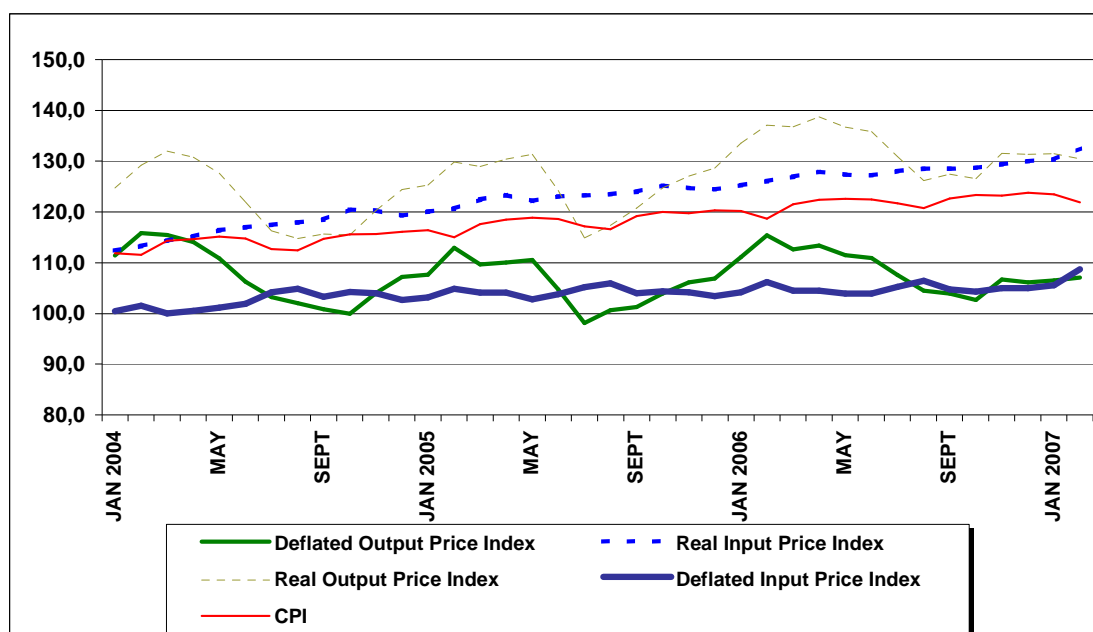
**II. Monthly changes of the Means of production and by main groups  
(2000=100,0)**

	February	January	Change %	February	January	Change %
	2007	2007		2007	2007	
Means of production	132,5	130,3	1,7	126,0	125,3	0,6
Intermediate consumption	134,9	132,1	2,1	127,2	126,3	0,7
Capital formation	125,6	125,1	0,4	122,6	122,3	0,3

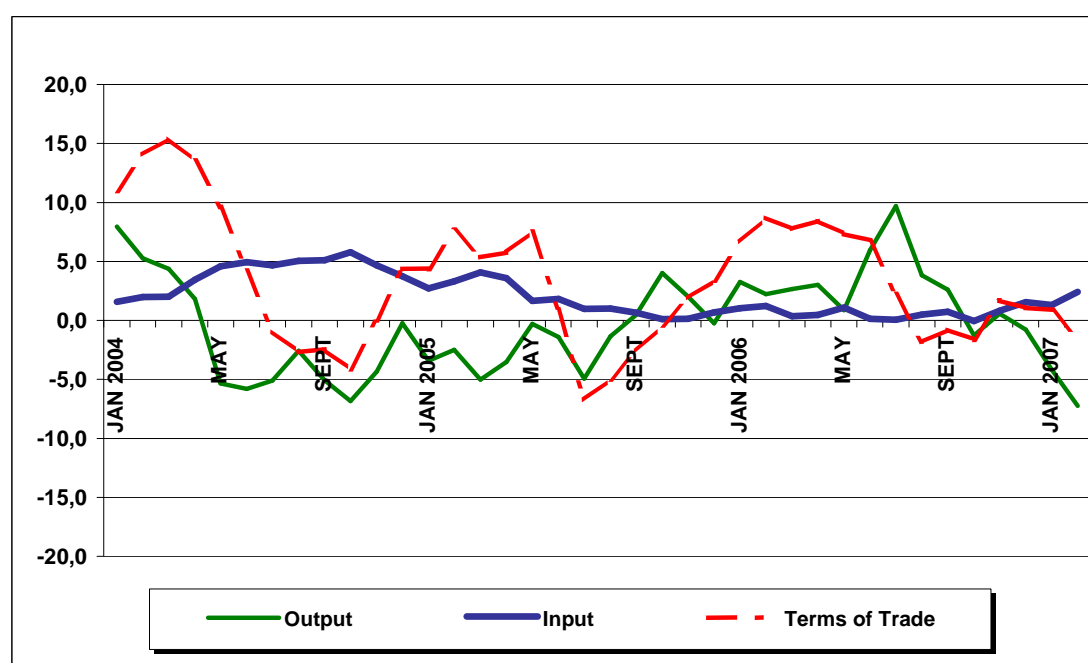
Notes: 1. The indices are calculated with infinite decimal figures and are rounded up to one decimal figure when published.

2. Percentage changes are calculated on the basis of the indices with infinite decimal figures and are rounded up to one decimal figure when published.

**Graph 1:**  
**Real and Deflated Agricultural Price Indices (Output and Input)**  
**Deflation by CPI (Consumer Price Index)**  
*(2000=100,0)*



**Graph 2:**  
**Output and Input Deflated Indices and Terms of Trade**  
**(% change compared to the corresponding month of the previous year)**  
*(2000=100,0)*



*Note: The Agricultural Terms of Trade are calculated by dividing the real output price index by the real input price index*