



HELLENIC REPUBLIC



MINISTRY OF ECONOMY AND FINANCE



**GENERAL SECRETARIAT OF
THE NATIONAL STATISTICAL SERVICE
OF GREECE**

Piraeus , 10 September 2008

PRESS RELEASE
Turnover Indices for Motor Trades ^{1,2,3}
(2005=100,0)

Second quarter 2008

The National Statistical Service of Greece publishes Turnover Indices for Motor Trades for the 2nd quarter 2008, according to provisional results, as follows :

□ **Year on year growth rates**

- The Turnover Index for Motor Trades in the 2nd quarter 2008 as compared to the 2nd quarter 2007 decreased by 1,2%. A year earlier the annual rate of change was 2,4%.
- The Turnover Index for Sale of Motor Vehicles in the 2nd quarter 2008 as compared to the 2nd quarter 2007 decreased by 4,9%. A year earlier the annual rate of change was 12,8%.
- The Turnover Index for Maintenance and Repair of Motor Vehicles in the 2nd quarter 2008 as compared to the 2nd quarter 2007 increased by 10,5 %. A year earlier the annual rate of change was -14,9%.
- The Turnover Index for Retail Sale of Automotive Fuel in the 2nd quarter 2008 as compared to the 2nd quarter 2007 increased by 8,3 %. A year earlier the annual rate of change was 4,3%.

□ Quarter on quarter growth rates

- The Turnover Index for Motor Trades in the 2nd quarter 2008 as compared to the 1st quarter 2008 decreased by 8,3%. A year earlier the quarterly rate of change was -0,9%.
- The Turnover Index for Sale of Motor Vehicles in the 2nd quarter 2008 as compared to the 1st quarter 2008 decreased by 2,7%. A year earlier the quarterly rate of change was 6,3%.
- The Turnover Index for Maintenance and Repair of Motor Vehicles in the 2nd quarter 2008 as compared to the 1st quarter 2008 increased by 3,0%. A year earlier the quarterly rate of change was 1,0%.
- The Turnover Index for Retail Sale of Automotive Fuel in the 2nd quarter 2008 as compared to the 1st quarter 2008 decreased by 25,4%. A year earlier the quarterly rate of change was -10,2%.

¹ The Turnover Indices for Motor Trades are new indices with base year 2005=100,0 covering the period from 2005 onwards.

The compilation and publication of these new indices is based upon the requirements of the Council Regulation (EC) No 1165/98 concerning short-term statistics as well as the amendment Regulation 1158/2005 of the European Parliament and Council amending the Council Regulation (EC) No 1165/98.

The turnover index is an important business indicator. The objective of this index is to show the evolution of the market for goods and services. Turnover comprises the totals invoiced (without VAT) by the observation units during the reference period (quarter). This corresponds to the market sales of goods or services supplied to third parties.

² The Turnover Indices for Motor Trades are compiled for the **NACE-Rev.1.1 division 50**-sale maintenance and repair of motor vehicles, motorcycles and related and retail sale of automotive fuel. They are also compiled for groups **501**(sale of motor vehicles),**502**(maintenance and repair of motor vehicles) and **505**(retail sale of automotive fuel) The survey for the compilation of the above indices includes 318 sampled enterprises .

³ All figures in this release are based on data adjusted for working days. The data are provisional when first released. The data become final as soon as all gathered data become definite. More specifically the data released for the most recent quarter are provisional and are published together with revised data of the previous quarter. The publication of data concerning groups 501, 502,505 starts from the first quarter 2007 retrospectively from the base year (2005).

Table 1
Evolution of Turnover Index for Motor Trades
(NACE-Rev.1.1 Division 50)
(2005=100,0)

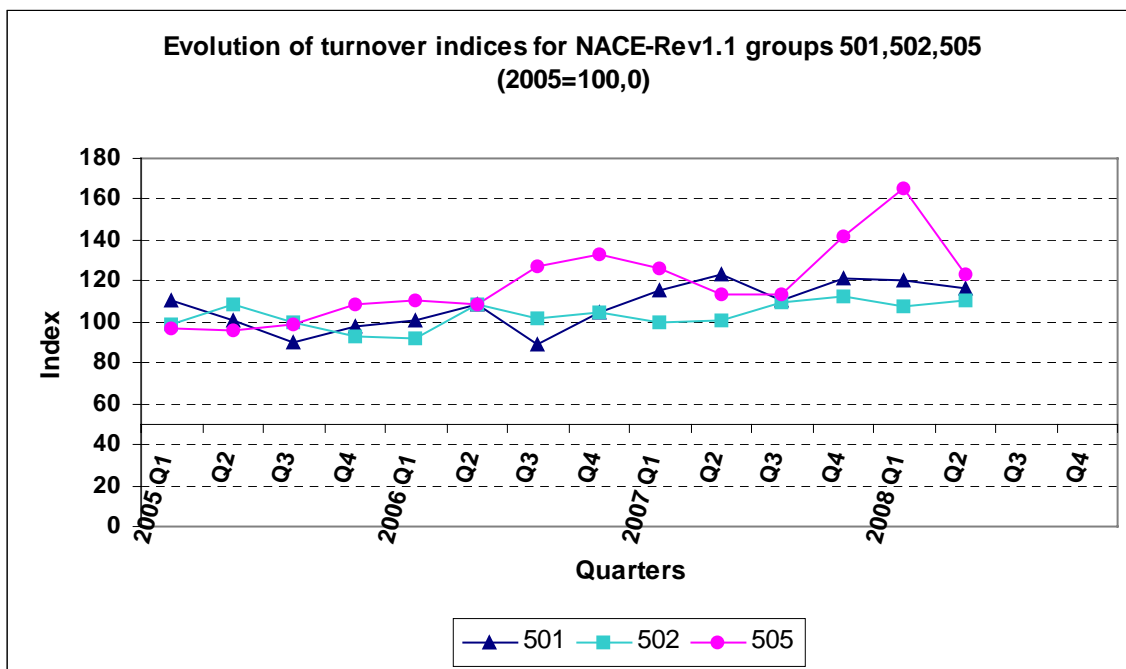
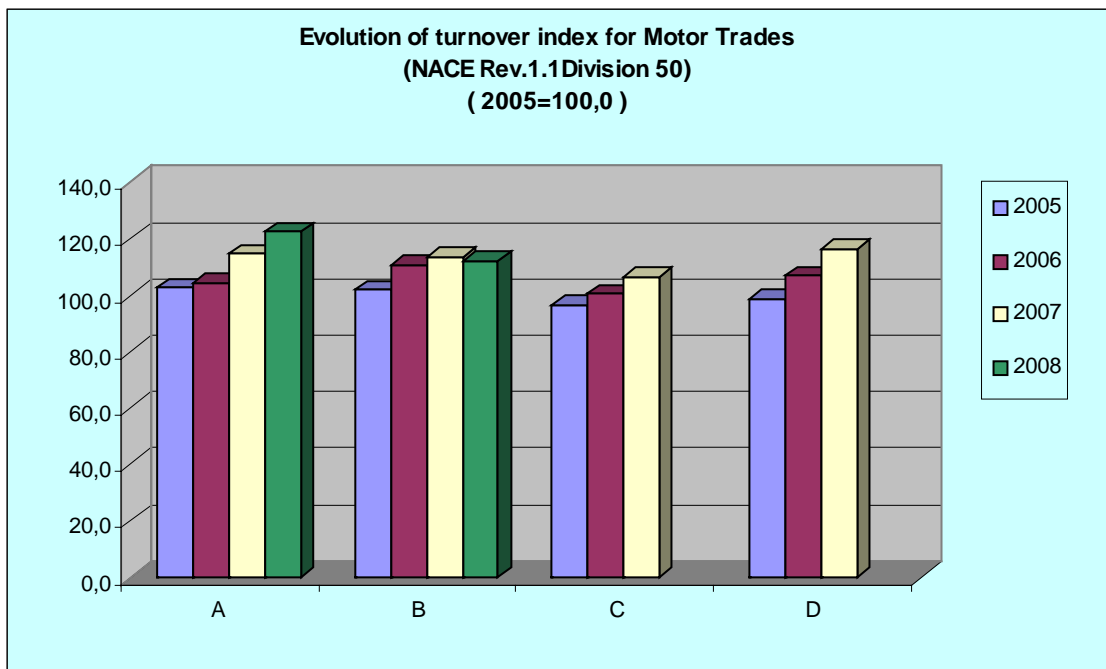
Year	2006			2007			2008		
Quarter	Index	Year on year growth rates (%)	Quarter on quarter growth rates. (%)	Index	Year on year growth rates (%)	Quarter on quarter growth rates. (%)	Index	Year on year growth rates (%)	Quarter on quarter growth rates. (%)
Q ₁	104,5	1,8	5,8	114,7	9,8	7,2	122,6	6,8	5,1
Q ₂	111,0	8,9	6,2	113,7	2,4	-0,9	*112,4	-1,2	-8,3
Q ₃	100,4	3,9	-9,6	106,6	6,2	-6,3			
Q ₄	107,0	8,4	6,6	116,6	9,0	9,4			
Average	105,7	5,7		112,9	6,8				

Table 2
Evolution of Turnover Indices for NACE-Rev.1.1 groups 501,502,505
(2005=100,0)

Year-Quarter		Sale of Motor Vehicles (NACE group 501)			Maintenance and Repair of Motor Vehicles (NACE group 502)			Retail Sale of Automotive Fuel (NACE group 505)		
		Index	Year on year growth rates (%)	Quarter on quarter growth rates (%)	Index	Year on year growth rates (%)	Quarter on quarter growth rates (%)	Index	Year on year growth rates (%)	Quarter on quarter growth rates (%)
2005	Q ₁	110,8	—	—	98,7	—	—	96,9	—	—
	Q ₂	101,1	—	-8,7	108,6	—	10,1	95,8	—	-1,1
	Q ₃	90,1	—	-10,9	99,4	—	-8,5	98,5	—	2,9
	Q ₄	97,9	—	8,7	93,3	—	-6,1	108,8	—	10,4
2006	Q ₁	100,5	-9,3	2,6	92,4	-6,3	-1,0	110,3	13,9	1,4
	Q ₂	108,9	7,7	8,4	118,0	8,7	27,7	108,9	13,7	-1,3
	Q ₃	88,8	-1,4	-18,4	101,7	2,3	-13,8	126,7	28,6	16,4
	Q ₄	104,3	6,5	17,4	105,0	12,5	3,2	133,2	22,5	5,1
2007	Q ₁	115,7	15,1	10,9	99,4	7,6	-5,3	126,5	14,6	-5,1
	Q ₂	122,9	12,8	6,3	100,5	-14,9	1,0	113,6	4,3	-10,2
	Q ₃	110,8	24,7	-9,8	109,3	7,5	8,8	113,7	-10,3	0,0
	Q ₄	121,2	16,1	9,3	112,4	7,1	2,9	141,6	6,2	24,5
2008	Q ₁	120,0	3,8	-0,9	107,8	8,4	-4,1	165,0	30,4	16,5
	*Q ₂	116,8	-4,9	-2,7	110,0	10,5	3,0	123,1	8,3	-25,4

* Provisional data

DIAGRAMS



For further information on data:

Andriana Dafni, Panagiota Braila

Economic and Short-Term Indicators Division

Tel:0030 210 4852127, 0030 210 4852717

Fax:0030 210 4852729

e-mail : ret.sal@statistics.gr , andrdafrni@statistics.gr