



HELLENIC REPUBLIC

HELLENIC STATISTICAL AUTHORITY

Piraeus, 20 November 2013

PRESS RELEASE

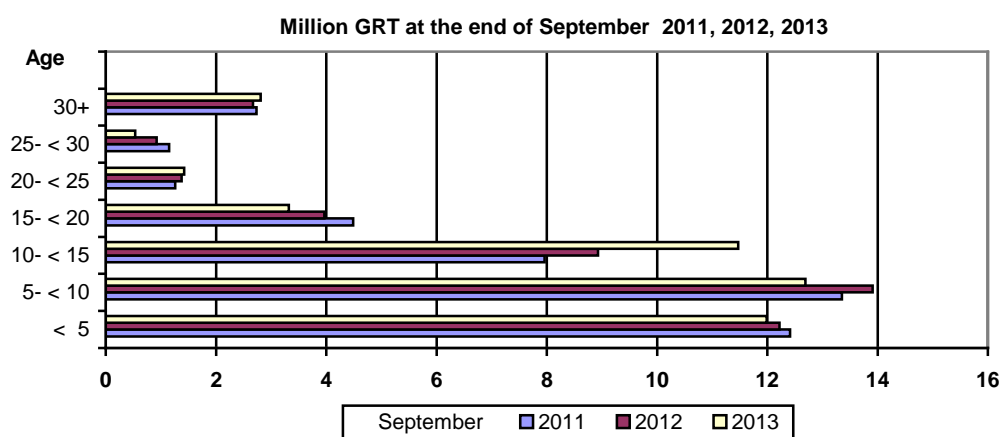
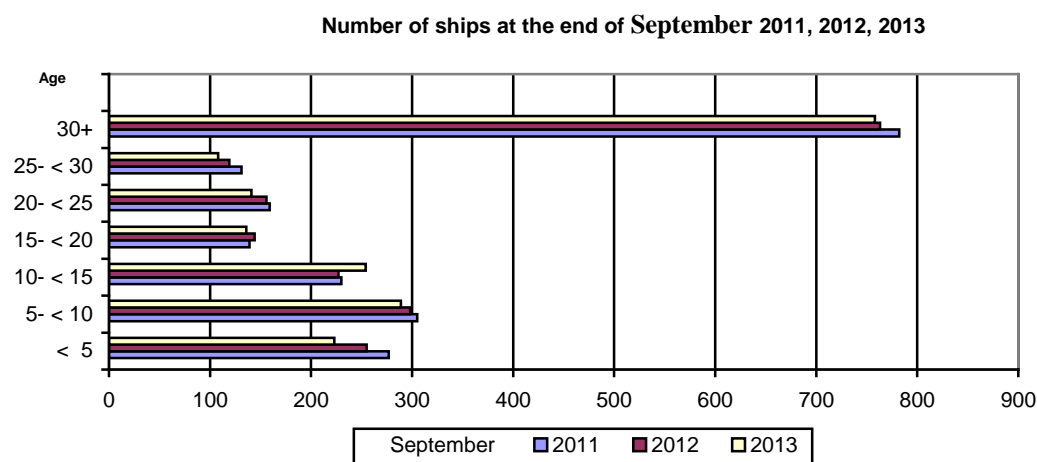
GREEK MERCHANT FLEET: SEPTEMBER 2013

(Provisional data)

The Greek Merchant Fleet, for vessels of 100 GRT and over, decreased by 2,7% in September 2013 compared with September 2012, while the Greek Merchant Fleet recorded a decline of 3,0% in September 2012 compared with September 2011 (Table 1).

The gross tonnage of the Greek Merchant Fleet, for vessels of 100 GRT and over, increased by 0,6% in September 2013 compared with July 2012, while in September 2012 compared with September 2011 it was up by 1,5% (Table 1).

Chart 1. Distribution of the Greek merchant ships of 100 GRT and over, by age groups.



Information:
Division of Statistics on Trade and Services
Section Maritime Transport Statistics
Kleftogiannis Elpidia
Tel : 213 135 3087
Fax: 213 135 3059
email : Kleftoge@statistics.gr

Table 1. Greek Merchant Fleet of 100 GRT and over : September 2011, 2012, 2013

September										
Type of ships	2011		2012		2013		Change%			
	Number of ships	Tonnage (GRT)	Number of ships	Tonnage (GRT)	Number of ships	Tonnage (GRT)	Number of ships	Tonnage (GRT)	Number of ships	Tonnage (GRT)
Total	2.023	43.352.881	1.962	43.993.381	1.909	44.241.594	-3,0	1,5	-2,7	0,6
Cargo	541	16.021.011	529	16.327.905	512	15.808.761	-2,2	1,9	-3,2	-3,2
Tankers	539	25.754.363	532	26.218.498	529	27.035.199	-1,3	1,8	-0,6	3,1
Passenger ships	698	1.502.842	660	1.372.649	630	1.326.828	-5,4	-8,7	-4,5	-3,3
Other	245	74.665	241	74.329	238	70.806	-1,6	-0,5	-1,2	-4,7

**Table 2. Distribution of the Greek Merchant ships of 100 GRT and over by tonnage groups:
September 2011, 2012, 2013.**

Tonnage groups	September					
	2011		2012		2013	
	Number of ships	Tonnage (GRT)	Number of ships	Tonnage (GRT)	Number of ships	Tonnage (GRT)
Total	2.023	43.352.881	1.962	43.993.381	1.909	44.241.594
100 -< 500	832	209.249	791	200.491	762	193.004
500- < 3.000	373	467.767	359	452.652	348	439.260
3.000 -< 7.000	77	346.057	74	332.678	70	313.615
7.000- < 10.000	29	244.518	27	228.670	26	220.740
10.000- < 20.000	57	863.124	52	793.315	45	692.283
20.000 -< 30.000	95	2.496.749	88	2.346.470	95	2.562.019
30.000 +	560	38.725.417	571	39.639.105	563	39.820.673

**Table3. Distribution of the Greek Merchant ships of 100 GRT and over, by age groups :
September 2011, 2012, 2013**

Age groups	September					
	2011		2012		2013	
	Number of ships	Tonnage (GRT)	Number of ships	Tonnage (GRT)	Number of ships	Tonnage (GRT)
Total	2.023	43.352.881	1.962	43.993.381	1.909	44.241.594
< 5	277	12.414.378	255	12.221.583	223	11.986.179
5- < 10	305	13.351.525	298	13.908.609	289	12.692.700
10- < 15	230	7.957.875	227	8.926.624	254	11.472.744
15- < 20	139	4.488.267	144	3.967.447	136	3.323.026
20- < 25	159	1.257.500	156	1.374.859	141	1.423.209
25- < 30	131	1.150.350	119	925.686	108	534.761
30+	782	2.732.986	763	2.668.573	758	2.808.975

METHODOLOGICAL NOTES

Greek Merchant Fleet Survey	The Survey on the Greek Merchant Fleet has been producing results since 1964. It has been conducted on a monthly basis without any major methodological changes ever since. The purpose of the survey is to fully record statistical data on the number and basic characteristics of the Greek merchant ships, thus depicting the evolution over the course of time of the Greek merchant fleet.
Legal Framework	The survey is conducted in compliance with the joint Ministerial Decision (No 6792/G-81/11-4-97) signed by the Minister of National Economy and the Minister of Mercantile Marine.
Reference Period	The results of the survey refer to the end of September 2013
Coverage	The survey covers all domestic Port Authorities, as well as Greek Consular Port Authorities abroad, which keep ship registers. These Authorities have to send a report on a monthly basis to the Hellenic Statistical Authority (ELSTAT) pertaining to the changes in the Greek merchant ships registered in their ship registers.
Definitions	<p>Merchant ship: Seagoing self-propelled vessel, at least of 10 GRT, designed for the carriage of goods, transport of passengers, for fishing, towing or specially fitted out for other commercial maritime activities.</p> <p>Greek merchant fleet: The total number of the merchant ships registered in Greece, which belong to natural or legal persons residing on the Greek territory. The Greek flag carried by these ships means that all their maritime activities (subsidies for ship building, cargo limitations and other tax provisions) are governed by commercial and economic rules which are laid down by the respective Greek authorities.</p> <p>Gross Register Tonnage (GRT): unit of measurement of the total volume in cubic feet of the spaces within the hull and of the enclosed spaces above the deck which are available for carrying goods, food, passengers and crew. It equals to the volume of 100 cubic feet or 2.83 m³.</p> <p>Net Register Tonnage (NRT): unit of measurement derived from the gross tonnage by deducting allowances in respect of spaces used for the crew, navigating and propelling machinery, fuel and water ballasts, and other spaces not used for passengers or cargo.</p> <p>Age of ship: indicated by the year of original construction of the hull or that of the hull containing the engine room.</p>
Methodology	<p>It is an exhaustive survey conducted by all domestic Port Authorities and Greek Consular Port Authorities abroad, which report to ELSTAT, on a monthly basis, on changes in the ships pertaining to: a) new registrations of ships in the ship registers, b) change in the name of a ship, c) change of ownership, d) transfers to or from a different port, e) deletion of a ship from a ship register, f) final measurement – remeasurement of ships, g) replacement of the ship's engine.</p> <p>All these data, after being fully processed, are used to update, through a specially designed software application, the Official Register of Greek Merchant Ships. This Register is used for the production of monthly and annual statistical results.</p>
References	Further information (tables, charts) concerning the Survey on the Greek Merchant Fleet can be found on the webpage of ELSTAT (www.statistics.gr), under the link: - <i>Statistical Themes - Transport- Maritime transport – Greek Merchant Fleet of 10 GRT and over.</i>