



HELLENIC REPUBLIC

MINISTRY OF FINANCE



GENERAL SECRETARIAT
NATIONAL STATISTICAL SERVICE
OF GREECE

Piraeus, 10th of December 2009

PRESS RELEASE

Unemployment rate at 9.1 in September 2009

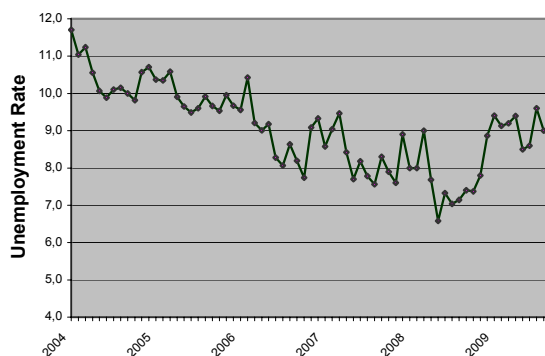
LABOUR FORCE SURVEY: September 2009

Unemployment rate in September 2009 was 9.1% compared to 7.4% in September 2008 and 9.0% in August 2009. The number of employed amounted to 4,577,844 persons while the number of unemployed amounted to 456,803 and the number of inactive to 4,240,986. The corresponding figures for September 2004, 2005, 2006, 2007, 2008 και 2009 are presented in Table 1.

The number of employed increased by 26,933 persons compared to September 2008 (a 0.6% rate of increase) and increased by 13,598 persons compared to August 2009 (a 0.3% rate of increase).

Unemployed increased by 92,934 persons (a 25.5% rate of increase) compared to September 2008 and increased by 4,097 persons compared to August 2009 (a 0.9% rate of increase).

Unemployment rate by month (January 2004 – September 2009)



Tables 2, 3 and 4 present unemployment rate by NUTS II areas, gender and age groups for September 2004, 2005, 2006, 2007, 2008 και 2009.

Contact Person: Stelios Zachariou

Tel: 210 4852173

Fax: 210 4852948

E-mail: zacharis@statistics.gr

Table 1. Employed, unemployed, economically non-active and unemployment rate (September 2004 - 2009).

Σχόλιο [i1]:

	September					
	2004	2005	2006	2007	2008	2009
Employed	4,324,690	4,381,375	4,500,606	4,503,793	4,550,911	4,577,844
Unemployed	480,427	468,590	401,743	410,324	363,869	456,803
Inactive	4,268,679	4,265,728	4,267,002	4,298,786	4,325,644	4,240,986
Unemployment rate	10.0	9.7	8.2	8.3	7.4	9.1

Table 2: Unemployment rate by region: September 2004 – 2009

Περιφέρεια	September					
	2004	2005	2006	2007	2008	2009
Anatoliki Makedonia Thraki	10.7	11.4	9.0	10.9	7.6	11.9
Kentriki Makedonia	12.6	11.5	8.8	9.2	8.4	10.0
Dytiki Makedonia	18.1	21.9	19.0	12.7	9.4	10.2
Ipeiros	10.5	12.6	11.5	9.8	10.4	12.3
Thessalia	9.3	10.6	8.4	9.4	10.3	10.2
Ionia Nisia	3.3	5.8	8.8	4.4	3.3	6.3
Dytiki Ellada	10.7	8.3	6.3	9.6	8.2	9.8
Stereia Ellada	7.8	10.3	6.2	7.5	7.0	9.7
Attiki	10.0	8.9	8.4	8.2	7.0	8.9
Peloponnissos	9.1	7.8	6.3	8.3	6.7	8.3
Voreio Aigaio	8.7	10.8	8.3	7.2	4.2	4.0
Notio Aigaio	5.1	6.5	6.9	5.0	4.6	3.6
Criti	5.6	5.4	3.5	3.5	4.7	5.4
Total Country	10.0	9.7	8.2	8.3	7.4	9.1

Table 3. Unemployment rate by sex: September 2004-2009

Φύλο	September					
	2004	2005	2006	2007	2008	2009
Male	6.0	6.4	5.3	5.3	5.1	6.0
Female	15.8	14.5	12.5	12.7	10.7	13.4
Total	10.0	9.7	8.2	8.3	7.4	9.1

Table 4: Unemployment rate by age groups: September 2004-2009

Age Group	September					
	2004	2005	2006	2007	2008	2009
15-24 years old	27.5	28.0	25.6	23.3	24.3	25.7
25-34 years old	12.8	12.3	11.4	11.7	10.0	12.6
35-44 years old	8.0	8.0	6.3	6.1	5.4	7.3
45-54 years old	4.6	5.1	4.1	5.1	4.0	5.2
55-64 years old	5.3	3.6	2.7	3.2	3.4	4.1
65-74 years old	0.0	1.7	1.0	0.5	0.0	0.3
Total	10.0	9.7	8.2	8.3	7.4	9.1

EXPLANATORY NOTES

Labour Force Survey	Labour Force Survey produces early estimates since 1981 (second quarter of the year). Since 1998 is a continuous quarterly survey. The main statistical objectives of Labour Force Survey is to divide the population of working age (15 years and above) into three mutually exclusive and exhaustive groups - persons in employment, unemployed persons and inactive persons. In addition, Labour Force Survey collects information on demographic characteristics, on main job characteristics, on the existence and characteristics of second job, on educational attainment, on participation in education, on previous working experience and on search of job.
Legislation	Current survey is completely harmonized with European legislation. The principal legal act is the <u>Council Regulation (EC) No. 577/98</u> that stipulates the provisions on design, survey characteristics and decision making processes. Survey framework was modified in successive Commission regulations. (<u>Regulation (EC) No 1372/2007</u> , <u>Regulation (EC) No 2257/2003</u> , <u>Regulation (EC) No 1991/2002</u>).
Reference Period	September 2009
Coverage	For the monthly estimates, a sub-sample of the quarterly Labour Force survey's sample was used.
Definitions	<p>Employed are persons aged 15 years or older, who during the reference week had worked, even for just one hour, for pay or profit or they have worked in the family business, or they were not at work but had a job or business from which they were temporarily absent.</p> <p>Unemployed are persons aged 15-74 who were without work during the reference week (they were not classified as employed), were currently available for work and were either actively seeking work in the past four weeks or had already found a job to start within the next three months.</p> <p>Inactive are those persons who neither classified as employed nor as unemployed.</p> <p>Economically active population (labour force) are persons that either employed or unemployed</p> <p>Unemployment Rate: Is the ratio of unemployed divided by total labour force.</p>
Methodology	Labour Force Survey' s estimates are produced by a suitable unbiased estimator which takes in to account a) the probability of selection of every sampled household, b) response rate in every primary sampling unit, c) the estimated population for September 2009, allocated by NUTS II areas, sex and age group).
References	Analytical description of Labour Force Survey' s methodology and definitions can be found at www.statistics.gr .