



Piraeus, 12th of November 2009

PRESS RELEASE

Unemployment rate at 9.0 in August 2009

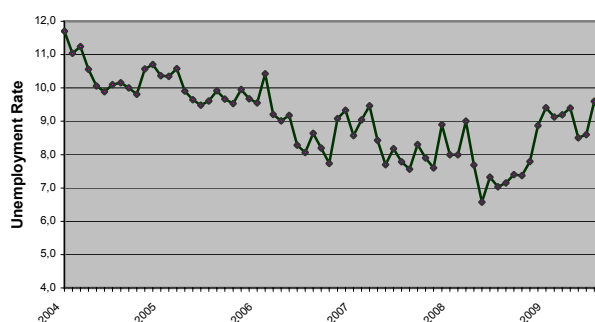
LABOUR FORCE SURVEY: August 2009

Unemployment rate in August 2009 was 9,0% compared to 7,1% in August 2008 and 9.6% in July 2009. The number of employed amounted to 4,564,246 persons while the number of unemployed amounted to 452,706 and the number of inactive to 4,255,326. The corresponding figures for August 2004, 2005, 2006, 2007, 2008 και 2009 are presented in Table 1.

The number of employed decreased by 44,533 persons compared to August 2008 (a 1.0% rate of decrease) and increased by 72,084 persons compared to July 2009 (a 1.6% rate of increase).

Unemployed increased by 97,979 persons (a 27.6% rate of increase) compared to August 2008 and decreased by 24,001 persons compared to July 2009 (a 5.0% rate of decrease).

Unemployment rate by month (January 2004 – August 2009)



Tables 2, 3 and 4 present unemployment rate by NUTS II areas, gender and age groups for August 2004, 2005, 2006, 2007, 2008 και 2009.

Contact Person: Stelios Zachariou

Tel: 210 4852173

Fax: 210 4852948

E-mail: zacharis@statistics.gr

Table 1. Employed, unemployed, economically non-active and unemployment rate (August 2004 - 2009).

	August					
	2004	2005	2006	2007	2008	2009
Employed	4,358,877	4,390,548	4,499,488	4,549,954	4,608,779	4,564,246
Unemployed	492,596	483,276	425,265	372,090	354,727	452,706
Inactive	4,218,031	4,238,611	4,239,746	4,289,300	4,274,297	4,255,326
Unemployment rate	10.2	9.9	8.6	7.6	7.1	9.0

Table 2: Unemployment rate by region: August 2004 – 2009

Περιφέρεια	August					
	2004	2005	2006	2007	2008	2009
Anatoliki Makedonia Thraki	11.9	12.7	11.2	9.9	6.8	12.1
Kentriki Makedonia	12.6	11.0	8.9	8.5	8.8	10.4
Dytiki Makedonia	14.9	17.5	11.4	13.0	15.3	9.4
Ipeiros	11.4	11.8	10.0	7.2	8.0	8.7
Thessalia	10.3	11.0	8.0	8.8	7.5	8.5
Ionia Nisia	4.8	6.4	5.5	4.6	4.4	3.8
Dytiki Ellada	15.7	12.0	10.5	9.6	11.6	8.7
Stereia Ellada	13.6	8.7	10.2	8.0	7.7	10.9
Attiki	8.5	8.9	8.3	7.4	6.2	9.5
Peloponnissos	9.4	10.3	8.1	6.0	6.6	5.1
Voreio Aigaio	4.8	11.9	8.1	6.5	4.7	7.8
Notio Aigaio	5.7	6.0	4.8	3.6	1.2	6.3
Criti	6.1	5.8	6.4	2.4	4.3	6.3
Total Country	10.2	9.9	8.6	7.6	7.1	9.0

Table 3. Unemployment rate by sex: August 2004-2009

Φύλο	August					
	2004	2005	2006	2007	2008	2009
Male	6.4	6.0	5.3	4.6	4.5	7.2
Female	15.5	15.5	13.4	11.8	11.0	11.6
Total	10.2	9.9	8.6	7.6	7.1	9.0

Table 4: Unemployment rate by age groups: August 2004-2009

Age Group	August					
	2004	2005	2006	2007	2008	2009
15-24 years old	23.4	26.5	24.8	22.2	19.2	24.2
25-34 years old	13.8	12.6	11.4	10.5	10.6	11.8
35-44 years old	8.2	8.4	7.1	5.8	5.4	7.2
45-54 years old	6.3	6.1	4.5	4.2	4.0	6.2
55-64 years old	3.4	3.6	3.8	2.9	2.7	4.7
65-74 years old	0.0	2.4	0.0	0.2	1.8	1.6
Total	10.2	9.9	8.6	7.6	7.1	9.0

EXPLANATORY NOTES

Labour Force Survey	Labour Force Survey produces early estimates since 1981 (second quarter of the year). Since 1998 is a continuous quarterly survey. The main statistical objectives of Labour Force Survey is to divide the population of working age (15 years and above) into three mutually exclusive and exhaustive groups - persons in employment, unemployed persons and inactive persons. In addition, Labour Force Survey collects information on demographic characteristics, on main job characteristics, on the existence and characteristics of second job, on educational attainment, on participation in education, on previous working experience and on search of job.
Legislation	Current survey is completely harmonized with European legislation. The principal legal act is the <u>Council Regulation (EC) No. 577/98</u> that stipulates the provisions on design, survey characteristics and decision making processes. Survey framework was modified in successive Commission regulations. (<u>Regulation (EC) No 1372/2007</u> , <u>Regulation (EC) No 2257/2003</u> , <u>Regulation (EC) No 1991/2002</u>).
Reference Period	August 2009
Coverage	For the monthly estimates, a sub-sample of the quarterly Labour Force survey's sample was used.
Definitions	<p>Employed are persons aged 15 years or older, who during the reference week had worked, even for just one hour, for pay or profit or they have worked in the family business, or they were not at work but had a job or business from which they were temporarily absent.</p> <p>Unemployed are persons aged 15-74 who were without work during the reference week (they were not classified as employed), were currently available for work and were either actively seeking work in the past four weeks or had already found a job to start within the next three months.</p> <p>Inactive are those persons who neither classified as employed nor as unemployed.</p> <p>Economically active population (labour force) are persons that either employed or unemployed</p> <p>Unemployment Rate: Is the ratio of unemployed divided by total labour force.</p>
Methodology	Labour Force Survey' s estimates are produced by a suitable unbiased estimator which takes in to account a) the probability of selection of every sampled household, b) response rate in every primary sampling unit, c) the estimated population for August 2009, allocated by NUTS II areas, sex and age group).
References	Analytical description of Labour Force Survey' s methodology and definitions can be found at www.statistics.gr .