



HELLENIC REPUBLIC  
HELLENIC STATISTICAL AUTHORITY

Piraeus, 10 October 2014

## PRESS RELEASE

**ANNUAL NATIONAL ACCOUNTS:** Revision of the benchmark year and compilation of time series for national accounts for the period 1995-2013, in combination with the implementation of the European System of National and Regional Accounts ESA2010.

European System of National and Regional Accounts ESA2010

On 26 June 2013, the Regulation (EU) No 549/2013 of the European Parliament and of the Council on the European System of National and Regional Accounts in the European Union - ESA 2010 was published in the Official Journal of the European Union (L 174/1). The new European System of National and Regional Accounts (ESA2010) replaced ESA 1995, in order for the national accounts to be adapted to the new economic environment and developments in methodological research, as well as to users' needs.

In the Press Release dated 12 March 2014, when the Hellenic Statistical Authority announced the first estimate of the Gross Domestic Product (GDP) for the year 2013, it also informed users on the ongoing work for the revision of national accounts, which involved the integration of new and updated data from various sources in the production of annual national accounts, with the appropriate quality checks on sources and methods, where that was necessary. ELSTAT also informed users on the wider set of statistical works pertaining to the implementation of the new European System of Accounts-ESA 2010 that were in progress and the regular revision of the benchmark year for national accounts (from 2005 to 2010) slated for September 2014.

In accordance with the provisions of Regulation (EU) 549/2013 pertaining to the data transmission programme, the new system of National Accounts (ESA 2010) is required to be implemented for the period 1995-2013. For this reason, the revised estimates of data for the period 1995-2013 are also included in the framework of the revision works for the implementation of the new system. In addition, it should be noted that the compilation of a continuous time series for 1995-2013 of National Accounts data under ESA2010 without breaks covers the existing gap as regards the lack of a long time series, including for the years before 2000, which has been a persistent request from users [Note:1].

[Note:1] The so far published GDP and its components data for the period 2000-2013 according ESA 95 presented break in the series between non revised data of the period 2000-2004 and the revised data of the period 2005-2013.

**The main reasons for the revision are summarized as follows:**

**A. Methodological changes**

***1. Changes due to the implementation of ESA 2010***

- Calculation of R&D as a fixed asset
- Calculation of military weapons as Gross Fixed Capital Formation
- Classification of institutional units in public and private sector with updated ESA 2010 criteria
- Change in the statistical recording of goods sent abroad for manufacturing/processing
- Change in statistical recording of merchanting
- Change in the calculation of Financial Intermediation Services Indirectly Measured (FISIM) between resident and non-resident Financial Institutions(Fis)

***2. Other methodological changes***

- New estimation of capital stock and Consumption of Fixed Capital (CFC) for the total economy S.1 and for the General Government sector S.13
- New estimation of expenditure for new dwellings and work in progress
- Calculation of production of own account software
- Incorporation of Social Transfers in the General Government Final Consumption and deduction from the Final Consumption of Households
- Elimination of holding gains and losses from changes in inventories

**B. Statistical Changes**

- Incorporation of results of the structural business surveys for the years 2010-2011
- Incorporation of the results of the 2011 Population Census
- Use of updated business register for the year 2010
- Estimates of the final consumption expenditure of households based on the results of the Household Budget Surveys for the years 2010-2013
- Incorporation of the results of the Survey conducted by the National Accounts Division on the data of the sub-sectors of the Financial Corporations sector (S12).
- Estimates for Non-Profit Institutions Serving Households (NPISH) on the basis of updated register
- Estimates of dwelling services (statistical treatment of repair and maintenance expenses for self occupied dwellings by owners)
- New method for calculating the deflator of the final consumption of General Government
- Incorporation of imports data on military weapons from a new data source
- Incorporation of updated data of oil and supplies

### Changes in GDP for the benchmark year 2010

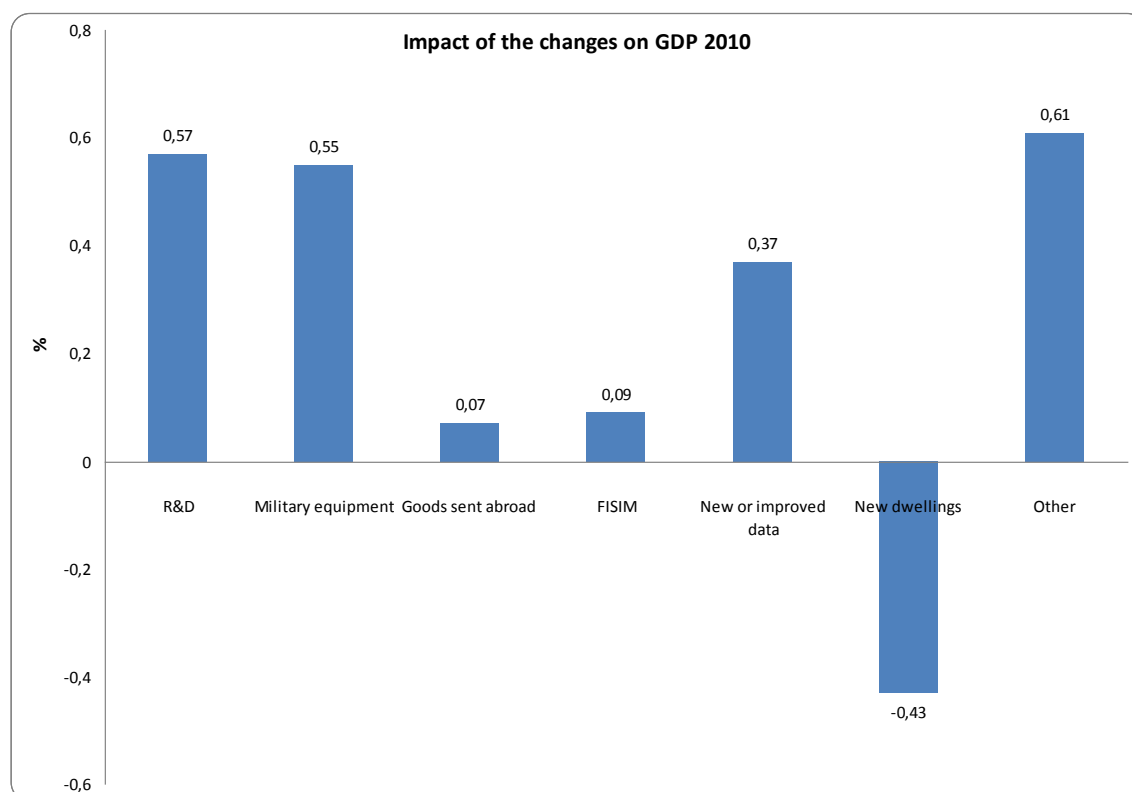
The changes in GDP for the benchmark year 2010 are presented in the table below.

GDP (current prices) in 2010 amounted to 226.2 billion €, according to ESA2010, compared to 222.2 billion €, according to ESA95, (4.0 bill. € increase). This increase is on account of the specific changes that have been recorded per component of GDP, which are presented in the following table:

Current prices, in million €		2010 ESA95	2010 ESA2010	Difference	% Change
	<b>PRODUCTION APPROACH</b>	<b>222,151</b>	<b>226,210</b>	<b>4,058</b>	<b>1.8%</b>
P.1	Output of goods and services (at basic prices)	351,385	356,749	5,364	1.5%
P.2	Intermediate consumption (at purchasers' prices)	156,163	157,104	941	0.6%
B.1*g	Gross value added (at basic prices)	195,222	199,645	4,424	2.3%
D.21	Taxes on products	27,368	26,912	-456	-1.7%
D.31	Subsidies on products	438	348	-90	-20.6%
	<b>EXPENDITURE APPROACH</b>	<b>222,151</b>	<b>226,210</b>	<b>4,058</b>	<b>1.8%</b>
P.3	Final consumption expenditure of Households	159,440	154,146	-5,294	-3.3%
P.3	Final consumption expenditure of NPISH	3,614	4,294	680	18.8%
P.3	Final consumption expenditure of General Government	40,749	48,900	8,151	20.0%
P.3	Final consumption expenditure (Total)	203,803	207,340	3,537	1.7%
P.51	Gross fixed capital formation	39,185	39,056	-129	-0.3%
P.52	Changes in inventories	-230	-786	-556	-
P.6	Exports of goods and services	49,414	49,984	570	1.2%
P.7	Imports of goods and services	70,020	69,384	-636	-0.9%
	<b>INCOME APPROACH</b>	<b>222,151</b>	<b>226,209</b>	<b>4,058</b>	<b>1.8%</b>
D.1	Compensation of employees	80,493	81,035	542	0.7%
B.2	Gross operating surplus / mixed income	117,071	120,553	3,482	3.0%
D.2	Taxes on production and imports	27,926	27,891	-35	-0.1%
D.3	Subsidies	3,339	3,270	-69	-2.1%

The total impact of the methodological and the statistical changes for the year 2010 are presented in the following table:

		<b>GDP</b>	<b>Impact on GDP Year 2010</b>	<b>Explanations or Comments</b>
	<b><u>Total impact</u></b>	<b>+4058</b>	<b>+ 1.83%</b>	<i>Total change</i>
	<b><u>Methodological changes</u></b>	<b>+2893</b>	<b>+ 1.28%</b>	
1	Capitalisation of research and development (R&D)	+1281	+ 0.57%	<i>ESA2010 change</i>
2	Capitalisation of military expenditure	+1252	+ 0.55%	<i>ESA2010 change</i>
3	Goods sent abroad for processing	+166	+ 0.07%	<i>ESA2010 change</i>
4	FISIM between residents and non residents Fls	+194	+ 0.09%	<i>ESA2010 change</i>
	<b><u>Statistical changes</u></b>	<b>-119</b>	<b>-0.05%</b>	
1	Integration of new or improved data sources	+846	+ 0.37%	
1a	Foreign Trade Statistics (FTS) updated data sources	-225	-0.1%	
1b	Revision of oil and supplies	+1295	+0.57%	FTS new data on oil
1c	Military new source data on imports	-224	-0.1%	Data based on physical deliveries
2	Exhaustiveness and specific improvements . - Expenditure for new dwellings and work in progress	-965	-0.43%	
	<b><u>Other methodological and statistical changes</u></b>	<b>+1284</b>	<b>+0.61%</b>	Updated data sources, calculation of capital stock and CFC, own account software etc.



### GDP Annual growth rates (volume changes) years 2008-2013

The GDP and its components annual growth rates (volume changes) are presented in the following tables:

#### Gross Domestic Product – Revised data according to ESA2010

% volume change		2008	2009	2010	2011	2012	2013
	<b>PRODUCTION APPROACH</b>	<b>-0.4%</b>	<b>-4.4%</b>	<b>-5.4%</b>	<b>-8.9%</b>	<b>-6.6%</b>	<b>-3.9%</b>
P.1	Output of goods and services (at basic prices)	-2.2%	-4.2%	-6.6%	-10.6%	-6.1%	-3.9%
P.2	Intermediate consumption (at purchasers' prices)	-4.4%	-5.0%	-7.7%	-13.0%	-6.6%	-4.1%
B.1*g	Gross value added (at basic prices)	-0.3%	-3.5%	-5.7%	-8.8%	-5.7%	-3.7%
D.21	Taxes on products	-2.0%	-10.8%	-3.7%	-9.3%	-12.7%	-5.3%
D.31	Subsidies on products	-23.5%	-1.8%	-24.1%	5.2%	-4.0%	-1.0%
	<b>EXPENDITURE APPROACH</b>	<b>-0.4%</b>	<b>-4.4%</b>	<b>-5.4%</b>	<b>-8.9%</b>	<b>-6.6%</b>	<b>-3.9%</b>
P.3	Final consumption expenditure of Households	3.1%	-1.4%	-7.3%	-10.9%	-8.1%	-2.0%
P.3	Final consumption expenditure of NPISH	-2.9%	17.8%	0.5%	-0.7%	0.8%	-0.1%
P.3	Final consumption expenditure of General Government	-2.1%	1.6%	-4.3%	-6.6%	-5.0%	-6.5%
P.3	Final consumption expenditure (Total)	1.8%	-0.4%	-6.4%	-9.7%	-7.2%	-3.0%
P.51	Gross fixed capital formation	-6.6%	-13.2%	-20.9%	-16.8%	-28.7%	-9.5%
P.52	Changes in inventories	-	-	-	-	-	-
P.6	Exports of goods and services	3.5%	-18.5%	4.6%	0.0%	1.2%	2.1%
P.7	Imports of goods and services	2.6%	-19.6%	-5.5%	-9.0%	-9.1%	-1.6%

#### Gross Domestic Product –Previously published (March 2014) data according to ESA95

% volume change		2008	2009	2010	2011	2012	2013
	<b>PRODUCTION APPROACH</b>	<b>-0.2%</b>	<b>-3.1%</b>	<b>-4.9%</b>	<b>-7.1%</b>	<b>-7.0%</b>	<b>-3.9%</b>
P.1	Output of goods and services (at basic prices)	-1.5%	-2.9%	-8.0%	-6.9%	-7.1%	-4.7%
P.2	Intermediate consumption (at purchasers' prices)	-3.3%	-3.6%	-11.4%	-7.2%	-7.2%	-5.8%
B.1*g	Gross value added (at basic prices)	0.0%	-2.2%	-5.2%	-6.6%	-7.0%	-3.7%
D.21	Taxes on products	-2.3%	-9.4%	-3.1%	-10.8%	-7.0%	-4.9%
D.31	Subsidies on products	-17.2%	4.8%	-20.7%	-10.3%	-6.8%	-4.6%
	<b>EXPENDITURE APPROACH</b>	<b>-0.2%</b>	<b>-3.1%</b>	<b>-4.9%</b>	<b>-7.1%</b>	<b>-7.0%</b>	<b>-3.9%</b>
P.3	Final consumption expenditure of Households	4.7%	-1.9%	-6.4%	-7.9%	-9.3%	-6.0%
P.3	Final consumption expenditure of NPISH	-14.6%	17.9%	0.6%	0.7%	-9.3%	-6.0%
P.3	Final consumption expenditure of General Government	-2.6%	4.9%	-8.7%	-5.2%	-6.9%	-4.1%
P.3	Final consumption expenditure (Total)	2.9%	-0.3%	-6.8%	-7.2%	-8.9%	-5.6%
P.51	Gross fixed capital formation	-14.3%	-13.7%	-15.0%	-19.6%	-19.2%	-12.8%
P.52	Changes in inventories	-	-	-	-	-	-
P.6	Exports of goods and services	1.7%	-19.4%	5.2%	0.3%	-1.7%	1.8%
P.7	Imports of goods and services	0.9%	-20.2%	-6.2%	-7.3%	-13.8%	-5.3%

## Annual growth rate (volume change) of years 1996-2007

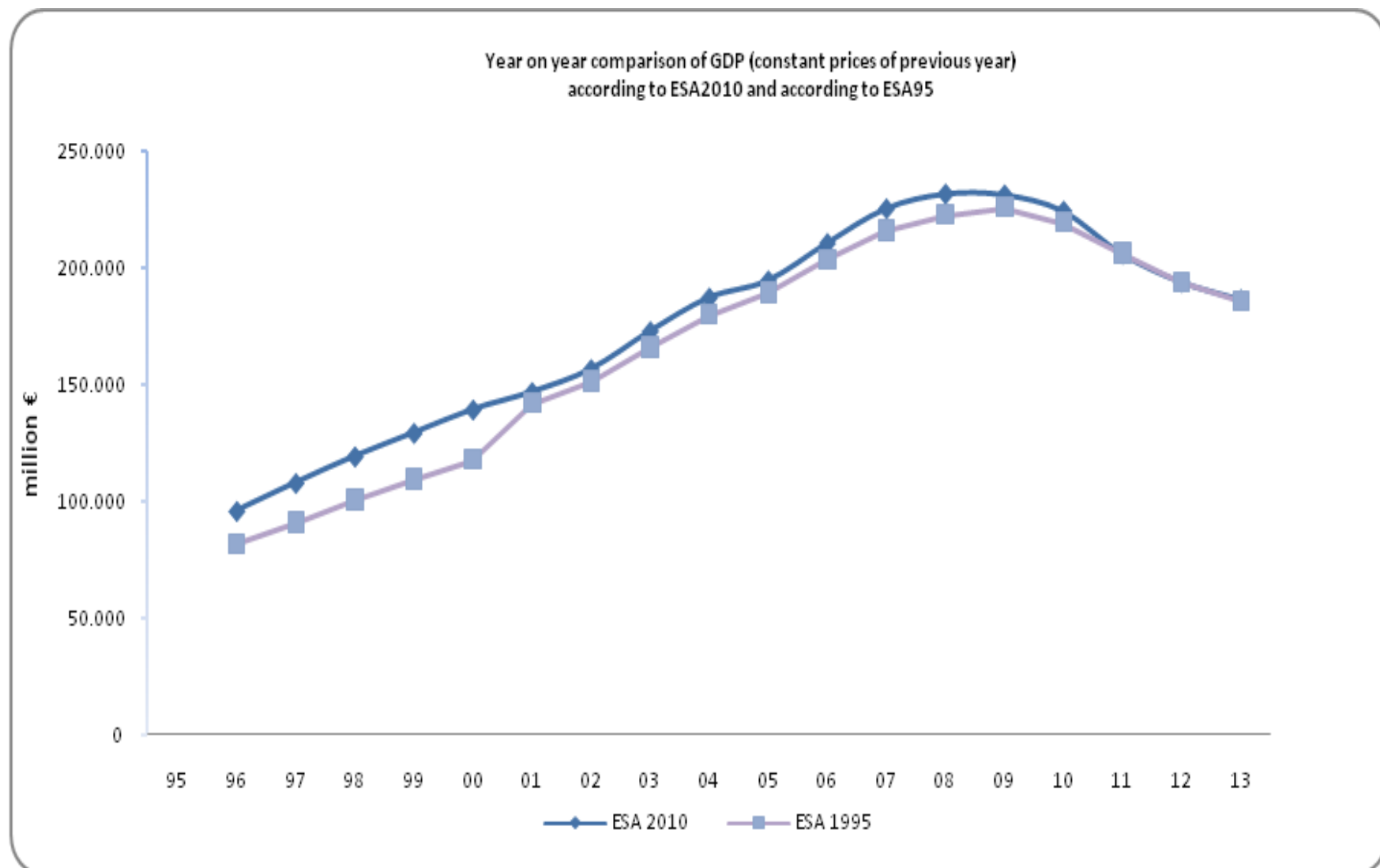
### Gross Domestic Product – Revised data according to ESA2010

% volume change		1996	1997	1998	1999	2000	2001	2002	2003	2004	2005	2006	2007
	<b>PRODUCTION APPROACH</b>	<b>3.0%</b>	<b>4.5%</b>	<b>4.1%</b>	<b>3.1%</b>	<b>4.0%</b>	<b>3.7%</b>	<b>3.2%</b>	<b>6.6%</b>	<b>5.0%</b>	<b>0.9%</b>	<b>5.8%</b>	<b>3.5%</b>
P.1	Output of goods and services (at basic prices)	2.1%	3.2%	4.3%	2.0%	4.6%	4.2%	4.4%	4.1%	4.4%	0.8%	6.1%	3.5%
P.2	Intermediate consumption (at purchasers' prices)	1.8%	1.8%	4.0%	2.2%	6.2%	5.4%	5.2%	0.6%	2.9%	1.0%	8.0%	4.1%
B.1*g	Gross value added (at basic prices)	2.4%	4.4%	4.5%	1.8%	3.4%	3.1%	3.7%	7.1%	5.7%	0.7%	4.6%	3.0%
D.211	Taxes on products	6.6%	4.6%	1.2%	11.6%	6.4%	4.5%	1.5%	1.1%	0.3%	0.4%	8.5%	7.0%
D.212	Subsidies on products	0.3%	2.7%	7.5%	-0.3%	-6.2%	-23.0%	26.6%	-11.1%	12.5%	-15.6%	-63.9%	-22.3%
	<b>EXPENDITURE APPROACH</b>	<b>3.0%</b>	<b>4.5%</b>	<b>4.1%</b>	<b>3.1%</b>	<b>4.0%</b>	<b>3.7%</b>	<b>3.2%</b>	<b>6.6%</b>	<b>5.0%</b>	<b>0.9%</b>	<b>5.8%</b>	<b>3.5%</b>
P.3	Final consumption expenditure of Households	3.2%	3.2%	4.8%	3.4%	2.5%	4.3%	5.1%	3.8%	4.4%	4.5%	2.7%	3.9%
P.3	Final consumption expenditure of NPISH	-6.5%	5.4%	1.7%	8.6%	0.1%	0.1%	-5.3%	7.0%	2.7%	10.1%	13.1%	-9.3%
P.3	Final consumption expenditure of General Government	4.2%	2.6%	1.0%	1.6%	6.0%	4.4%	2.2%	5.7%	4.2%	4.3%	5.5%	5.1%
P.3	Final consumption expenditure (Total)	3.2%	3.1%	4.0%	3.2%	3.2%	4.2%	4.2%	4.3%	4.3%	4.5%	3.5%	3.9%
P.51	Gross fixed capital formation	9.7%	2.4%	21.0%	8.1%	2.7%	1.4%	-1.1%	15.7%	5.5%	-12.9%	17.4%	17.8%
P.52	Changes in inventories	-	-	-	-	-	-	-	-	-	-	-	-
P.6	Exports of goods and services	4.2%	23.2%	4.5%	24.4%	22.2%	0.6%	-7.3%	-0.7%	18.5%	3.4%	5.2%	10.6%
P.7	Imports of goods and services	10.3%	8.7%	15.8%	17.0%	19.0%	1.2%	-3.4%	5.8%	7.1%	-0.7%	13.7%	15.1%

## Annual growth rate (volume change) of years 1996-2007

### Gross Domestic Product – Previously published (March 2014) data according to ESA95

% volume change		1996	1997	1998	1999	2000	2001	2002	2003	2004	2005	2006	2007
	<b>PRODUCTION APPROACH</b>	<b>2.4%</b>	<b>3.6%</b>	<b>3.4%</b>	<b>3.4%</b>	<b>4.5%</b>	<b>4.2%</b>	<b>3.4%</b>	<b>5.9%</b>	<b>4.4%</b>	<b>2.3%</b>	<b>5.5%</b>	<b>3.5%</b>
P.1	Output of goods and services (at basic prices)	1.5%	2.9%	3.8%	2.4%	6.2%	4.1%	5.3%	4.0%	3.9%	1.4%	6.3%	3.5%
P.2	Intermediate consumption (at purchasers' prices)	1.2%	2.3%	4.1%	2.8%	9.1%	4.8%	6.8%	0.8%	2.4%	0.1%	8.9%	4.2%
B.1*g	Gross value added (at basic prices)	1.8%	3.3%	3.6%	2.1%	4.1%	3.6%	4.1%	6.4%	5.1%	2.4%	4.1%	3.0%
D.21	Taxes on products	5.3%	5.7%	2.3%	11.0%	5.0%	4.6%	1.4%	0.3%	0.3%	-0.3%	9.2%	6.7%
D.31	Subsidies on products	-1.4%	3.4%	4.4%	1.2%	-5.0%	-21.8%	26.3%	-10.8%	13.3%	-12.7%	-63.9%	-22.3%
	<b>EXPENDITURE APPROACH</b>	<b>2.4%</b>	<b>3.6%</b>	<b>3.4%</b>	<b>3.4%</b>	<b>4.5%</b>	<b>4.2%</b>	<b>3.4%</b>	<b>5.9%</b>	<b>4.4%</b>	<b>2.3%</b>	<b>5.5%</b>	<b>3.5%</b>
P.3	Final consumption expenditure of Households	2.4%	2.7%	3.5%	2.4%	2.0%	4.5%	4.9%	3.3%	3.9%	4.6%	3.9%	3.7%
P.3	Final consumption expenditure of NPISH	-6.7%	5.4%	1.8%	8.2%	0.1%	38.3%	-5.8%	1.8%	2.6%	-5.5%	26.6%	-1.6%
P.3	Final consumption expenditure of General Government	0.9%	3.0%	1.7%	2.1%	14.8%	0.7%	7.2%	-0.9%	3.5%	1.1%	3.1%	7.1%
P.3	Final consumption expenditure (Total)	2.1%	2.7%	3.2%	2.4%	4.3%	4.1%	5.2%	2.4%	3.8%	3.8%	4.1%	4.3%
P.51	Gross fixed capital formation	8.4%	6.8%	10.6%	11.0%	8.0%	4.8%	9.5%	11.8%	0.4%	-6.3%	14.9%	22.8%
P.52	Changes in inventories	-	-	-	-	-	-	-	-	-	-	-	-
P.6	Exports of goods and services	3.5%	20.0%	5.2%	18.1%	14.1%	0.0%	-8.4%	2.9%	17.3%	2.5%	4.3%	7.1%
P.7	Imports of goods and services	7.0%	14.2%	9.2%	15.0%	15.1%	1.2%	-1.3%	3.0%	5.7%	-1.5%	11.1%	14.5%





## Revision of the period 2008 – 2013

The GDP calculation under ESA 2010 at current prices for the years 2008-2013 in comparison with the previously published (March 2014) GDP calculation under ESA 95 for the respective years, are presented in the tables below:

### Gross Domestic Product of years 2008-2013 – Revised data according to ESA2010

		Current prices, in million €						% change of value					
		2008	2009	2010	2011	2012	2013	2008/ 2007	2009/ 2008	2010/ 2009	2011/ 2010	2012/ 2011	2013/ 2012
	<b>PRODUCTION APPROACH</b>	<b>242,096</b>	<b>237,431</b>	<b>226,210</b>	<b>207,752</b>	<b>194,204</b>	<b>182,438</b>	<b>4.0%</b>	<b>-1.9%</b>	<b>-4.7%</b>	<b>-8.2%</b>	<b>-6.5%</b>	<b>-6.1%</b>
P.1	Output of goods and services (at basic prices)	389,343	374,972	356,749	325,423	307,089	287,966	2.7%	-3.7%	-4.9%	-8.8%	-5.6%	-6.2%
P.2	Intermediate consumption (at purchasers' prices)	175,410	162,756	157,104	143,120	135,874	127,421	1.1%	-7.2%	-3.5%	-8.9%	-5.1%	-6.2%
B.1*g	Gross value added (at basic prices)	213,933	212,216	199,645	182,302	171,216	160,544	4.2%	-0.8%	-5.9%	-8.7%	-6.1%	-6.2%
D.21	Taxes on products	28,632	25,663	26,912	25,809	23,333	22,237	1.9%	-10.4%	4.9%	-4.1%	-9.6%	-4.7%
D.31	Subsidies on products	468	448	348	360	345	343	-30.3%	-4.4%	-22.3%	3.5%	-4.3%	-0.4%
	<b>EXPENDITURE APPROACH</b>	<b>242,096</b>	<b>237,431</b>	<b>226,210</b>	<b>207,752</b>	<b>194,204</b>	<b>182,438</b>	<b>4.0%</b>	<b>-1.9%</b>	<b>-4.7%</b>	<b>-8.2%</b>	<b>-6.5%</b>	<b>-6.1%</b>
P.3	Final consumption expenditure of Households	161,222	160,460	154,146	140,658	130,197	125,448	7.5%	-0.5%	-3.9%	-8.8%	-7.4%	-3.6%
P.3	Final consumption expenditure of NPISH	3,420	4,080	4,294	4,406	4,505	4,460	1.1%	19.3%	5.2%	2.6%	2.3%	-1.0%
P.3	Final consumption expenditure of General Government	49,050	54,007	48,900	44,085	41,089	36,472	5.6%	10.1%	-9.5%	-9.8%	-6.8%	-11.2%
P.3	Final consumption expenditure (Total)	213,692	218,547	207,340	189,149	175,791	166,381	6.9%	2.3%	-5.1%	-8.8%	-7.1%	-5.4%
P.51	Gross fixed capital formation	57,445	49,685	39,056	31,997	22,744	20,452	-4.2%	-13.5%	-21.4%	-18.1%	-28.9%	-10.1%
P.52	Changes in inventories	2,392	-6,207	-786	836	4,377	1,014	-	-	-	-	-	-
P.6	Exports of goods and services	56,568	45,147	49,984	52,880	54,838	55,147	7.9%	-20.2%	10.7%	5.8%	3.7%	0.6%
P.7	Imports of goods and services	88,001	69,742	69,384	67,110	63,546	60,555	8.2%	-20.7%	-0.5%	-3.3%	-5.3%	-4.7%
	<b>INCOME APPROACH</b>	<b>242,096</b>	<b>237,431</b>	<b>226,210</b>	<b>207,752</b>	<b>194,204</b>	<b>182,438</b>	<b>4.0%</b>	<b>-1.9%</b>	<b>-4.7%</b>	<b>-8.2%</b>	<b>-6.5%</b>	<b>-6.1%</b>
D.1	Compensation of employees	82,393	84,433	81,035	73,466	66,371	59,306	5.4%	2.5%	-4.0%	-9.3%	-9.7%	-10.6%
B.2	Gross operating surplus / mixed income	133,143	129,547	120,553	110,750	106,205	102,202	3.3%	-2.7%	-6.9%	-8.1%	-4.1%	-3.8%
D.2	Taxes on production and imports	30,030	27,125	27,891	27,551	25,044	24,115	2.3%	-9.7%	2.8%	-1.2%	-9.1%	-3.7%
D.3	Subsidies	3,470	3,675	3,270	4,014	3,416	3,185	-2.4%	5.9%	-11.0%	22.8%	-14.9%	-6.8%

**Gross Domestic Product of years 2008-2013 – Previously published (March 2014) data according to ESA95**

		Current prices, in million €						% change of value					
		2008	2009	2010	2011	2012	2013	2008/ 2007	2009/ 2008	2010/ 2009	2011/ 2010	2012/ 2011	2013/ 2012
	<b>PRODUCTION APPROACH</b>	<b>233,198</b>	<b>231,081</b>	<b>222,151</b>	<b>208,532</b>	<b>193,347</b>	<b>182,054</b>	<b>4.5%</b>	<b>-0.9%</b>	<b>-3.9%</b>	<b>-6.1%</b>	<b>-7.3%</b>	<b>-5.8%</b>
P.1	Output of goods and services (at basic prices)	383,733	374,009	351,385	335,234	313,854	293,459	3.6%	-2.5%	-6.0%	-4.6%	-6.4%	-6.5%
P.2	Intermediate consumption (at purchasers' prices)	178,698	168,107	156,163	152,097	143,405	133,480	2.3%	-5.9%	-7.1%	-2.6%	-5.7%	-6.9%
B.1*g	Gross value added (at basic prices)	205,035	205,901	195,222	183,137	170,449	159,979	4.8%	0.4%	-5.2%	-6.2%	-6.9%	-6.1%
D.21	Taxes on products	28,674	25,704	27,368	25,798	23,314	22,495	1.6%	-10.4%	6.5%	-5.7%	-9.6%	-3.5%
D.31	Subsidies on products	511	524	438	404	416	420	-24.0%	2.6%	-16.4%	-7.9%	3.1%	1.0%
	<b>EXPENDITURE APPROACH</b>	<b>233,198</b>	<b>231,081</b>	<b>222,151</b>	<b>208,532</b>	<b>193,347</b>	<b>182,054</b>	<b>4.5%</b>	<b>-0.9%</b>	<b>-3.9%</b>	<b>-6.1%</b>	<b>-7.3%</b>	<b>-5.8%</b>
P.3	Final consumption expenditure of Households	165,752	163,672	159,440	151,802	138,931	128,636	9.1%	-1.3%	-2.6%	-4.8%	-8.5%	-7.4%
P.3	Final consumption expenditure of NPISH	2,948	3,517	3,614	3,762	3,442	3,188	-11.0%	19.3%	2.8%	4.1%	-8.5%	-7.4%
P.3	Final consumption expenditure of General Government	42,283	47,457	40,749	36,248	33,836	31,349	6.3%	12.2%	-14.1%	-11.0%	-6.7%	-7.3%
P.3	Final consumption expenditure (Total)	210,982	214,646	203,803	191,812	176,209	163,174	8.1%	1.7%	-5.1%	-5.9%	-8.1%	-7.4%
P.51	Gross fixed capital formation	52,607	45,932	39,185	31,592	25,468	22,102	-11.4%	-12.7%	-14.7%	-19.4%	-19.4%	-13.2%
P.52	Changes in inventories	3,389	-3,009	-230	1,999	991	1,580	-	-	-	-	-	-
P.6	Exports of goods and services	56,271	44,514	49,414	52,247	52,728	53,014	6.0%	-20.9%	11.0%	5.7%	0.9%	0.5%
P.7	Imports of goods and services	90,052	71,002	70,020	69,119	62,049	57,815	6.4%	-21.2%	-1.4%	-1.3%	-10.2%	-6.8%
	<b>INCOME APPROACH</b>	<b>233,198</b>	<b>231,081</b>	<b>222,151</b>	<b>208,532</b>	<b>193,347</b>	<b>182,054</b>	<b>4.5%</b>	<b>-0.9%</b>	<b>-3.9%</b>	<b>-6.1%</b>	<b>-7.3%</b>	<b>-5.8%</b>
D.1	Compensation of employees	82,926	84,914	80,493	73,288	64,321	57,358	5.7%	2.4%	-5.2%	-9.0%	-12.2%	-10.8%
B.2	Gross operating surplus / mixed income	124,110	123,172	117,071	111,395	107,860	104,158	4.1%	-0.8%	-5.0%	-4.8%	-3.2%	-3.4%
D.2	Taxes on production and imports	29,662	26,743	27,926	27,077	24,482	23,858	2.0%	-9.8%	4.4%	-3.0%	-9.6%	-2.5%
D.3	Subsidies	3,500	3,748	3,339	3,229	3,315	3,320	-1.6%	7.1%	-10.9%	-3.3%	2.7%	0.1%

### Gross Domestic Product of years 1995-2007 – Revised data according to ESA2010

Current prices, in million €		1995	1996	1997	1998	1999	2000	2001	2002	2003	2004	2005	2006	2007
	<b>PRODUCTION APPROACH</b>	<b>93,407</b>	<b>103,529</b>	<b>114,835</b>	<b>125,688</b>	<b>134,218</b>	<b>141,732</b>	<b>151,987</b>	<b>162,274</b>	<b>178,571</b>	<b>193,013</b>	<b>199,153</b>	<b>217,831</b>	<b>232,831</b>
P.1	Output of goods and services (at basic prices)	157,262	172,234	186,926	203,108	214,040	231,556	248,474	266,962	286,673	308,627	321,582	354,054	378,963
P.2	Intermediate consumption (at purchasers' prices)	72,350	78,665	83,429	89,684	94,132	105,878	114,077	122,292	126,434	134,557	142,875	161,023	173,570
B.1*g	Gross value added (at basic prices)	84,912	93,569	103,498	113,424	119,908	125,678	134,397	144,670	160,240	174,070	178,708	193,031	205,393
D.21	Taxes on products	11,078	12,473	13,960	15,141	16,867	18,501	19,489	20,192	20,809	21,595	22,737	25,548	28,111
D.31	Subsidies on products	2,583	2,513	2,623	2,877	2,557	2,447	1,898	2,588	2,478	2,652	2,292	748	673
	<b>EXPENDITURE APPROACH</b>	<b>93,407</b>	<b>103,529</b>	<b>114,835</b>	<b>125,688</b>	<b>134,218</b>	<b>141,732</b>	<b>151,987</b>	<b>162,274</b>	<b>178,571</b>	<b>193,013</b>	<b>199,153</b>	<b>217,831</b>	<b>232,831</b>
P.3	Final consumption expenditure of Households	61,871	68,755	74,924	82,242	87,424	92,578	99,285	106,652	114,088	122,437	131,548	139,619	149,987
P.3	Final consumption expenditure of NPISH	1,660	1,679	1,868	1,989	2,217	2,290	2,371	2,327	2,579	2,725	3,106	3,626	3,383
P.3	Final consumption expenditure of General Government	16,294	17,767	19,804	21,347	22,997	25,151	27,657	30,599	33,015	36,173	39,322	42,429	46,447
P.3	Final consumption expenditure (Total)	79,825	88,201	96,596	105,578	112,639	120,019	129,312	139,579	149,682	161,335	173,977	185,673	199,816
P.51	Gross fixed capital formation	19,099	22,177	23,719	30,040	33,401	35,408	36,851	37,530	44,324	47,360	41,137	50,265	59,947
P.52	Changes in inventories	2,248	2,513	2,601	1,874	473	1,880	2,064	1,873	3,807	1,525	427	4,879	1,997
P.6	Exports of goods and services	13,410	14,714	18,611	20,414	25,760	33,497	34,679	32,876	33,181	40,111	42,474	46,150	52,422
P.7	Imports of goods and services	21,176	24,077	26,692	32,218	38,056	49,072	50,919	49,584	52,424	57,317	58,861	69,136	81,351
	<b>INCOME APPROACH</b>	<b>93,407</b>	<b>103,529</b>	<b>114,835</b>	<b>125,688</b>	<b>134,218</b>	<b>141,732</b>	<b>151,987</b>	<b>162,274</b>	<b>178,571</b>	<b>193,013</b>	<b>199,153</b>	<b>217,831</b>	<b>232,831</b>
D.1	Compensation of employees	27,292	29,847	33,972	37,879	41,707	43,911	47,318	54,486	59,210	63,735	68,210	72,756	78,200
B.2	Gross operating surplus / mixed income	57,220	63,301	69,067	74,964	77,527	81,143	86,489	89,762	100,656	109,832	110,559	121,355	128,835
D.2	Taxes on production and imports	11,698	13,217	14,678	15,942	17,863	19,508	20,438	21,024	21,684	22,512	23,624	26,728	29,352
D.3	Subsidies	2,802	2,836	2,882	3,097	2,879	2,830	2,257	2,997	2,979	3,066	3,240	3,008	3,556

**Gross Domestic Product of years 1996-2007 – Revised data according to ESA2010**

% change of value		1996	1997	1998	1999	2000	2001	2002	2003	2004	2005	2006	2007
	<b>PRODUCTION APPROACH</b>	<b>10.8%</b>	<b>10.9%</b>	<b>9.5%</b>	<b>6.8%</b>	<b>5.6%</b>	<b>7.2%</b>	<b>6.8%</b>	<b>10.0%</b>	<b>8.1%</b>	<b>3.2%</b>	<b>9.4%</b>	<b>6.9%</b>
P.1	Output of goods and services (at basic prices)	9.5%	8.5%	8.7%	5.4%	8.2%	7.3%	7.4%	7.4%	7.7%	4.2%	10.1%	7.0%
P.2	Intermediate consumption (at purchasers' prices)	8.7%	6.1%	7.5%	5.0%	12.5%	7.7%	7.2%	3.4%	6.4%	6.2%	12.7%	7.8%
B.1*g	Gross value added (at basic prices)	10.2%	10.6%	9.6%	5.7%	4.8%	6.9%	7.6%	10.8%	8.6%	2.7%	8.0%	6.4%
D.21	Taxes on products	12.6%	11.9%	8.5%	11.4%	9.7%	5.3%	3.6%	3.1%	3.8%	5.3%	12.4%	10.0%
D.31	Subsidies on products	-2.7%	4.4%	9.7%	-11.1%	-4.3%	-22.4%	36.3%	-4.2%	7.0%	-13.6%	-67.4%	-10.1%
	<b>EXPENDITURE APPROACH</b>	<b>10.8%</b>	<b>10.9%</b>	<b>9.5%</b>	<b>6.8%</b>	<b>5.6%</b>	<b>7.2%</b>	<b>6.8%</b>	<b>10.0%</b>	<b>8.1%</b>	<b>3.2%</b>	<b>9.4%</b>	<b>6.9%</b>
P.3	Final consumption expenditure of Households	11.1%	9.0%	9.8%	6.3%	5.9%	7.2%	7.4%	7.0%	7.3%	7.4%	6.1%	7.4%
P.3	Final consumption expenditure of NPISH	1.2%	11.2%	6.5%	11.5%	3.3%	3.5%	-1.8%	10.8%	5.7%	14.0%	16.7%	-6.7%
P.3	Final consumption expenditure of General Government	9.0%	11.5%	7.8%	7.7%	9.4%	10.0%	10.6%	7.9%	9.6%	8.7%	7.9%	9.5%
P.3	Final consumption expenditure (Total)	10.5%	9.5%	9.3%	6.7%	6.6%	7.7%	7.9%	7.2%	7.8%	7.8%	6.7%	7.6%
P.51	Gross fixed capital formation	16.1%	7.0%	26.6%	11.2%	6.0%	4.1%	1.8%	18.1%	6.8%	-13.1%	22.2%	19.3%
P.52	Changes in inventories	-	-	-	-	-	-	-	-	-	-	-	-
P.6	Exports of goods and services	9.7%	26.5%	9.7%	26.2%	30.0%	3.5%	-5.2%	0.9%	20.9%	5.9%	8.7%	13.6%
P.7	Imports of goods and services	13.7%	10.9%	20.7%	18.1%	28.9%	3.8%	-2.6%	5.7%	9.3%	2.7%	17.5%	17.7%
	<b>INCOME APPROACH</b>	<b>10.8%</b>	<b>10.9%</b>	<b>9.5%</b>	<b>6.8%</b>	<b>5.6%</b>	<b>7.2%</b>	<b>6.8%</b>	<b>10.0%</b>	<b>8.1%</b>	<b>3.2%</b>	<b>9.4%</b>	<b>6.9%</b>
D.1	Compensation of employees	9.4%	13.8%	11.5%	10.1%	5.3%	7.8%	15.1%	8.7%	7.6%	7.0%	6.7%	7.5%
B.2	Gross operating surplus / mixed income	10.6%	9.1%	8.5%	3.4%	4.7%	6.6%	3.8%	12.1%	9.1%	0.7%	9.8%	6.2%
D.2	Taxes on production and imports	13.0%	11.1%	8.6%	12.0%	9.2%	4.8%	2.9%	3.1%	3.8%	4.9%	13.1%	9.8%
D.3	Subsidies	1.2%	1.6%	7.4%	-7.0%	-1.7%	-20.2%	32.8%	-0.6%	2.9%	5.7%	-7.2%	18.2%

**Gross Domestic Product of years 1995-2007 – Previously published (March 2014) data according to ESA95**

Current prices, in million €		1995	1996	1997	1998	1999	2000	2001	2002	2003	2004	2005	2006	2007
	<b>PRODUCTION APPROACH</b>	<b>79,927</b>	<b>87,851</b>	<b>97,235</b>	<b>105,773</b>	<b>112,686</b>	<b>136,281</b>	<b>146,428</b>	<b>156,615</b>	<b>172,431</b>	<b>185,266</b>	<b>193,050</b>	<b>208,622</b>	<b>223,160</b>
P.1	Output of goods and services (at basic prices)	124,972	136,068	147,575	159,324	168,119	216,062	231,103	249,130	268,157	286,851	315,272	345,141	370,374
P.2	Intermediate consumption (at purchasers' prices)	53,290	57,839	61,499	65,824	69,716	95,679	102,134	110,015	113,854	120,311	142,677	161,483	174,752
B.1*g	Gross value added (at basic prices)	71,682	78,230	86,076	93,500	98,404	120,383	128,968	139,115	154,304	166,540	172,595	183,658	195,622
D.21	Taxes on products	11,008	12,308	13,938	15,298	17,032	18,518	19,526	20,262	20,784	21,590	22,747	25,712	28,210
D.31	Subsidies on products	2,763	2,688	2,779	3,025	2,750	2,619	2,067	2,762	2,656	2,864	2,292	748	673
	<b>EXPENDITURE APPROACH</b>	<b>79,927</b>	<b>87,851</b>	<b>97,235</b>	<b>105,773</b>	<b>112,686</b>	<b>136,281</b>	<b>146,428</b>	<b>156,615</b>	<b>172,431</b>	<b>185,266</b>	<b>193,050</b>	<b>208,622</b>	<b>223,160</b>
P.3	Final consumption expenditure of Households	58,152	64,455	69,860	75,558	79,209	97,354	104,484	112,432	120,037	128,292	132,207	142,140	151,976
P.3	Final consumption expenditure of NPISH	253	257	285	304	337	1,274	1,807	1,806	1,900	2,012	2,518	3,272	3,313
P.3	Final consumption expenditure of General Government	12,250	12,760	14,713	16,161	17,374	24,271	25,430	28,656	29,430	31,897	34,937	35,657	39,794
P.3	Final consumption expenditure (Total)	70,655	77,473	84,858	92,023	96,921	122,899	131,720	142,895	151,367	162,201	169,662	181,069	195,083
P.51	Gross fixed capital formation	14,867	17,104	19,248	22,348	25,529	29,450	31,665	35,211	40,165	40,788	40,020	47,180	59,368
P.52	Changes in inventories	252	283	273	234	-141	2,328	2,314	-274	2,040	909	1,302	4,239	264
P.6	Exports of goods and services	14,087	15,394	19,145	20,985	25,259	33,882	35,186	33,004	34,509	41,412	44,807	48,298	53,088
P.7	Imports of goods and services	19,934	22,403	26,289	29,816	34,882	52,277	54,457	54,221	55,649	60,045	62,741	72,164	84,642
	<b>INCOME APPROACH</b>	<b>79,927</b>	<b>87,851</b>	<b>97,235</b>	<b>105,773</b>	<b>112,686</b>	<b>136,281</b>	<b>146,428</b>	<b>156,615</b>	<b>172,431</b>	<b>185,266</b>	<b>193,050</b>	<b>208,622</b>	<b>223,160</b>
D.1	Compensation of employees	25,777	28,042	31,864	35,163	38,294	45,313	47,873	55,370	59,988	64,851	69,313	72,900	78,422
B.2	Gross operating surplus / mixed income	45,635	49,859	53,893	57,927	59,662	74,679	80,761	83,623	94,259	101,548	103,676	112,194	119,224
D.2	Taxes on production and imports	11,497	12,961	14,516	15,928	17,802	19,293	20,219	20,793	21,342	22,145	23,301	26,536	29,070
D.3	Subsidies	2,982	3,011	3,039	3,244	3,072	3,003	2,426	3,172	3,158	3,278	3,240	3,008	3,556

**Gross Domestic Product of years 1996-2007 – Previously published (March 2014) data according to ESA95**

% change of value		1996	1997	1998	1999	2000	2001	2002	2003	2004	2005	2006	2007
	<b>PRODUCTION APPROACH</b>	<b>9.9%</b>	<b>10.7%</b>	<b>8.8%</b>	<b>6.5%</b>	<b>20.9%</b>	<b>7.4%</b>	<b>7.0%</b>	<b>10.1%</b>	<b>7.4%</b>	<b>4.2%</b>	<b>8.1%</b>	<b>7.0%</b>
P.1	Output of goods and services (at basic prices)	8.9%	8.5%	8.0%	5.5%	28.5%	7.0%	7.8%	7.6%	7.0%	9.9%	9.5%	7.3%
P.2	Intermediate consumption (at purchasers' prices)	8.5%	6.3%	7.0%	5.9%	37.2%	6.7%	7.7%	3.5%	5.7%	18.6%	13.2%	8.2%
B.1*g	Gross value added (at basic prices)	9.1%	10.0%	8.6%	5.2%	22.3%	7.1%	7.9%	10.9%	7.9%	3.6%	6.4%	6.5%
D.21	Taxes on products	11.8%	13.2%	9.8%	11.3%	8.7%	5.4%	3.8%	2.6%	3.9%	5.4%	13.0%	9.7%
D.31	Subsidies on products	-2.7%	3.4%	8.9%	-9.1%	-4.8%	-21.1%	33.6%	-3.8%	7.8%	-20.0%	-67.4%	-10.1%
	<b>EXPENDITURE APPROACH</b>	<b>9.9%</b>	<b>10.7%</b>	<b>8.8%</b>	<b>6.5%</b>	<b>20.9%</b>	<b>7.4%</b>	<b>7.0%</b>	<b>10.1%</b>	<b>7.4%</b>	<b>4.2%</b>	<b>8.1%</b>	<b>7.0%</b>
P.3	Final consumption expenditure of Households	10.8%	8.4%	8.2%	4.8%	22.9%	7.3%	7.6%	6.8%	6.9%	3.1%	7.5%	6.9%
P.3	Final consumption expenditure of NPISH	1.6%	10.9%	6.7%	10.9%	277.9%	41.8%	0.0%	5.2%	5.9%	25.1%	29.9%	1.3%
P.3	Final consumption expenditure of General Government	4.2%	15.3%	9.8%	7.5%	39.7%	4.8%	12.7%	2.7%	8.4%	9.5%	2.1%	11.6%
P.3	Final consumption expenditure (Total)	9.6%	9.5%	8.4%	5.3%	26.8%	7.2%	8.5%	5.9%	7.2%	4.6%	6.7%	7.7%
P.51	Gross fixed capital formation	15.0%	12.5%	16.1%	14.2%	15.4%	7.5%	11.2%	14.1%	1.6%	-1.9%	17.9%	25.8%
P.52	Changes in inventories	-	-	-	-	-	-	-	-	-	-	-	-
P.6	Exports of goods and services	9.3%	24.4%	9.6%	20.4%	34.1%	3.8%	-6.2%	4.6%	20.0%	8.2%	7.8%	9.9%
P.7	Imports of goods and services	12.4%	17.3%	13.4%	17.0%	49.9%	4.2%	-0.4%	2.6%	7.9%	4.5%	15.0%	17.3%
	<b>INCOME APPROACH</b>	<b>9.9%</b>	<b>10.7%</b>	<b>8.8%</b>	<b>6.5%</b>	<b>20.9%</b>	<b>7.4%</b>	<b>7.0%</b>	<b>10.1%</b>	<b>7.4%</b>	<b>4.2%</b>	<b>8.1%</b>	<b>7.0%</b>
D.1	Compensation of employees	8.8%	13.6%	10.4%	8.9%	18.3%	5.7%	15.7%	8.3%	8.1%	6.9%	5.2%	7.6%
B.2	Gross operating surplus / mixed income	9.3%	8.1%	7.5%	3.0%	25.2%	8.1%	3.5%	12.7%	7.7%	2.1%	8.2%	6.3%
D.2	Taxes on production and imports	12.7%	12.0%	9.7%	11.8%	8.4%	4.8%	2.8%	2.6%	3.8%	5.2%	13.9%	9.6%
D.3	Subsidies	1.0%	0.9%	6.7%	-5.3%	-2.2%	-19.2%	30.7%	-0.4%	3.8%	-1.1%	-7.2%	18.2%

## A. Methodological changes

### 1. Methodological changes due to the implementation of ESA2010

#### a) Capitalisation of research and development (R&D)

In ESA 2010, R&D products constitute investments and are therefore recorded as gross fixed capital formation, ie the acquisition, provision and depreciation of R&D (fixed assets) are treated as all other fixed asset.

ESA 2010 recognises expenditures for both purchased and own-account R&D as gross fixed capital formation and the depreciation of these assets is recorded as consumption of fixed capital.

This change resulted in a 0.57% increase in the level of GDP in 2010.

#### b) Capitalisation of military expenditure

According to ESA 2010, all military expenditures used in the production process for a period exceeding one year are treated as gross fixed capital formation, irrespective of the nature of the expenditure or its purpose.

This change resulted in a 0.55% increase in the level of GDP in 2010

#### c) New definitions of external trade on goods and services

Under ESA 1995, the gross values of goods sent abroad for processing were recorded as import/exports of goods under the assumption that it took place change of ownership. Under ESA 2010 the net value of the service of processing is recorded as import/export of service

Under ESA 1995, merchanting was included in imports and exports when these transactions did not take place in the same accounting period. Under ESA 2010, merchanting is recorded as net exports of goods. There is no impact in net balance of exports-imports from this statistical recording.

According ESA 2010 the interbank FISIM between resident FIs and non-resident FIs is removed from exports. According ESA 95 those transactions were included in exports.

The ESA2010 impact on imports-exports is as follows:

**Table: ESA 2010 impact for year 2010, Imports-Exports, million €**

Year 2010	Imports	Exports	Net Balance
Processing-Repairs Gross (FTS) (-)	-901	-745	156
Processing-Repair Fee (BoP) (+)	153	163	10
Merchanting (BoP) (-)	-135	-131	4
Net Merchanting (BoP) (+)		-4	-4
FISIM (NA calc.) (+)		194	194
<b>Total ESA 2010 Impact</b>	<b>-883</b>	<b>-523</b>	<b>360</b>

## 2. Other methodological changes

### a) New estimations for the capital stock and the consumption of fixed capital

New estimations for the capital stock and the consumption of fixed capital are available with the application of the Perpetual Inventory Method (PIM), with the geometric depreciation. The calculations refer to the Total Economy (Sector S1) and the General Government Sector (S13).

### b) Calculation of expenditure for new dwellings and work in progress

A new method for the calculation of the expenditure for new dwellings and work in progress is applied for the period 1995-2013 with the use of new data sources. Moreover, the holding gains-losses on stocks on dwellings are also calculated.

The differences between the old and the new method for the year 2010 is presented in the table below:

**Table: Impact of the year 2010, new dwellings and work in progress**

current prices, million €	
Years	2010
New Calculation	
Expenditure of New Dwellings & Repairs	11,240
Changes in inventories (excluding holding gains)	-1,145
<b>Total</b>	<b>10,095</b>
Old Calculation	
Expenditure of New Dwellings & Repairs	12,039
Changes in inventories (including holding gains)	-979
<b>Total</b>	<b>11,060</b>
Difference	-965
Impact to GDP	-0.43%

### c) Compilation of Own Account Software

The production of own-account software was valued at a macro-level as the sum of production costs. These costs were grouped into two parts (categories): labour costs and non-labour costs.

On the basis of the above method, the production of own-account software was calculated by summing estimates of the private sector and the government sector.

## B. Statistical Changes

### 1. Statistical Changes regarding external trade data (Imports-Exports)

Updated data from the Foreign Trade Statistics were used for the GDP calculations of years 1995-2013. In addition, imports and exports of oil petroleum products were compiled from Foreign Trade Statistics of ELSTAT instead of Bank of Greece data, that were used in ESA95. The impact on the level of GDP of year 2010 is +0.5%.

The impact on GDP of year 2010, due to the statistical and ESA 2010 changes of imports-exports is shown in the table below:



Year 2010	Imports	Exports	Net Balance	% on GDP
Updated Data Sources	847	622	-225	-0.1%
Revision of Oil & Supplies	-824	471	1,295	0.6%
Military new Source Data on imports	224		-224	-0.1%
ESA 2010, Impact	-883	-523	360	0.2%
<b>Total Revision</b>	<b>-636</b>	<b>570</b>	<b>1,206</b>	<b>0.5%</b>

## 2. Calculation of General Government final consumption deflator

The deflator is calculated taking into account the two main elements that compile the final consumption of General Government, that is, the expenditure for the compensation of employees and the expenditure for the intermediate consumption. These expenses are used as weights for the calculation of a weighted price index using the following price indices:

- The overall consumer price index, which is used for the deflation of the intermediate consumption and
- The price index for the compensation of employees, which is calculated from the value index of the annual changes of the compensation of employees and the volume index of the annual change of the number of employees in the General Government.

## 3. Other changes

### Production Approach

The calculations of the data for the years 2010-2011 are based on the structural business surveys of the years 2010-2011. For the calculation of the employment the data as resulted from the population census of 2011, along with the information from the business register of the year 2010 are used.

For the years 2012-2013 data of Short Term Indices, among other, are used.

### Expenditure approach

The calculation of the final consumption expenditure of households is based on the data from the Household Budget Survey of the years 2010-2013. The calculation of the final consumption expenditure of NPISH is based on the survey conducted by National Accounts Division of ELSTAT, taking into account an updated register.

For the calculation of the changes in inventories, for the years 2010-2013, the holding gains/losses are eliminated.

## Back casting of the time series for 1995-2009 under ESA 2010

The back-casting of the time-series for the period 1995-2009 consisted one of the main ESA 2010 Regulation requirements. Moreover, the compilation of a time series without breaks consisted a constant users' request expressed during the user conferences organized by ELSTAT since 2010. Therefore, the implementation of ESA 2010 and the quality improvement of the national accounts encompassed the calculation of a joint time series.

The back casting was calculated on a 64 NACE Rev.2 industries analysis and 64 CPA 2008 classification products. Data used are distinguished in:

- Data calculation for the whole period 1995-2009 consisted of ESA 2010 methodological changes, data source changes and qualitative improvements
- Old previously published data series under ESA 1995 (1995-2000, 2000-2005, 2005-2010),

while the working process followed is the national accounts calculation process, i.e supply-use tables by product and the production account and generation of income account by economic activity.

### 1. Period 2005-2009

In 2011, ELSTAT published an updated national accounts time series for the years 2005-2010 under ESA 1995 with benchmark year 2005. During the subsequent years, data were revised based on updated data sources and qualitative improvements so as to be consistent with regulation 2223/96.

Data of that period were adjusted in order for ESA 2010 methodological changes to be incorporated along with the incorporations of the new data sources.

### 2. Period 1995-2004

Chain linked price and volume indices were calculated with the use of the historic time series data, by industry and transaction.

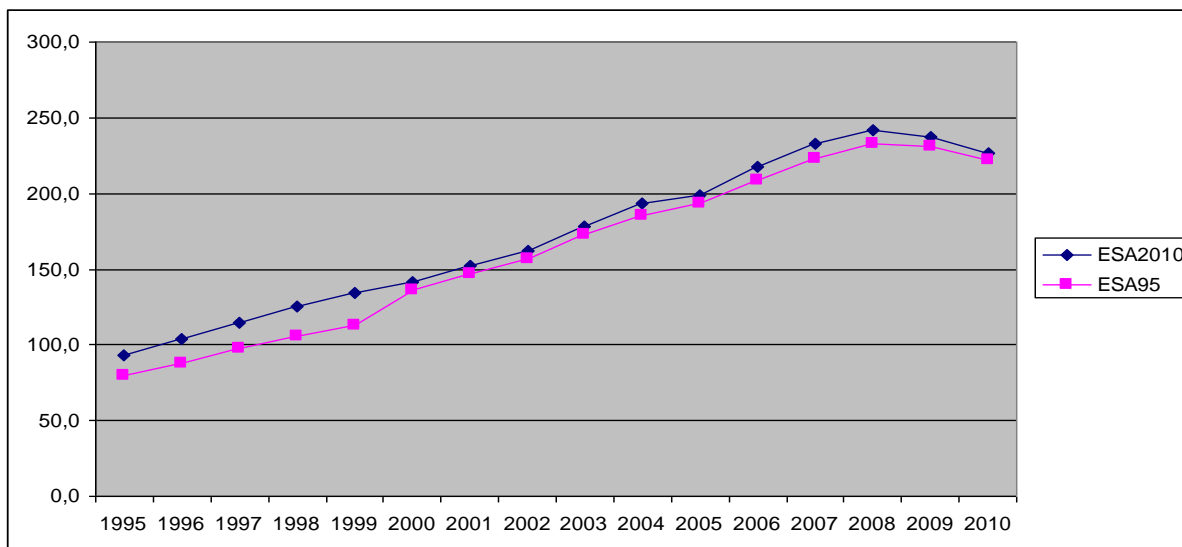
Data of the year 2005 according to ESA 2010 was the starting point on which the respective price and volume indices were implemented for the retrapolation back to year 1995. Moreover, the aforementioned ESA 2010 methodological adjustments and new data sources were also incorporated.

### 3. Estimations of GDP for the period 1995-2010

In the following table are presented the estimates of GDP (current prices, billion €) according to ESA2010, compared to the previous estimations of the periods 1995-2000, 2000-2005 and 2005-2010 according to ESA95, along with the percentage change of the level of GDP.

	1995	1996	1997	1998	1999	2000	2001	2002	2003	2004	2005	2006	2007	2008	2009	2010
ESA2010	93.4	103.5	114.8	125.7	134.2	141.7	152.0	162.3	178.6	193.0	199.2	217.8	232.8	242.1	237.4	226.2
ESA95	79.9	87.9	97.2	105.8	112.7	136.3	146.4	156.6	172.4	185.3	193.0	208.6	223.2	233.2	231.1	222.2
%	16.9%	17.8%	18.1%	18.8%	19.1%	4.0%	3.8%	3.6%	3.6%	4.2%	3.2%	4.4%	4.3%	3.8%	2.7%	1.8%

And the relevant diagram:



It is noted that the increase in the change of the level of GDP, for the period 1995-1999, compared to the following years 2000-2009, is due to the change of the level of GDP by 9.6%, as resulted from the previous revision of the national accounts data with benchmark year 2000, that took place in 2007, and due to the significant change from the calculations of the present revision for the gross fixed capital formation in dwellings and the work in progress in dwellings, which are presented in the following table:

In million €

1995	1996	1997	1998	1999
4027	4460	4978	5849	6656

#### Dissemination of data

More tables and detailed data are available in the portal of ELSTAT: [www.statistics.gr](http://www.statistics.gr)

Division of National Accounts

Maria Stavropoulou, Tel: ++30 213 135 2081, Fax: ++30 213 135 2552, E-mail: [m.k.stavropoulou@statistics.gr](mailto:m.k.stavropoulou@statistics.gr)

Synthesis of Accounts and Accounts with the rest of the World Section

Anastasia Pateraki, Tel: ++30 213 135 2082, Fax: ++30 213 135 2552, E-mail: [an.pateraki@statistics.gr](mailto:an.pateraki@statistics.gr)