



HELLENIC REPUBLIC



HELLENIC STATISTICAL AUTHORITY

Piraeus, 7 October 2011

## PRESS RELEASE

### PRODUCER PRICE INDICES FOR SERVICES: 2<sup>nd</sup> Quarter 2011

The Hellenic Statistical Authority publishes the Producer Price Indices for the Services Sector, with base year 2006=100.0, for the second quarter of 2011, as follows:

- Producer price index for freight transport services by road and removal services (industry 494)
- Producer price index for air transport services (industry 51)
- Producer price index for warehousing and storage services (industry 5210)
- Producer price index for cargo handling services (industry 5224)
- Producer price index for postal services and courier services (industry 53) which is distinguished in producer price index for postal services under universal service obligation (industry 531) and producer price index for other postal and courier services (industry 532)
- Producer price index for accounting, bookkeeping, auditing and tax consulting services (industry 692)
- Producer price index for technical testing and analysis services (industry 712)
- Producer price index for media representation services (industry 7312)
- Producer price index for market research and public opinion polling services (industry 732)
- Producer price index for security and investigation services (industry 80)
- Producer price index for cleaning services (industry 812)

The evolution of the compiled Producer Price Indices for the Services Sector is illustrated in the following tables. The data are provisional when first released and become final in the next quarter.

More specifically, each of the following tables represent:

Table 1: the annual rates of change of the above - mentioned indices of the second quarter of 2011, compared with the second quarter of 2009, as well as the annual rates of change of the second quarter of 2009 compared with the second quarter 2008.

Information:

Economic and Short-Term Indicators Division  
Wholesale Prices and Price Indices Section

Table 2: the quarterly rates of change of the above - mentioned indices of the second quarter of 2011, compared with the first quarter of 2010, as well as the quarterly rates of change of the second quarter of 2010 and 2009 compared with the first quarter 2010 and 2009 respectively.

Table 3: the evolution of the above - mentioned indices per quarter for the period 2007-2011.

Athanasios Stavropoulos  
Tel: 0030 213 1352126  
Fax: 0030 213 1352714

**Table 1: Annual comparisons of the Producer Price Indices for Services**

**Base year: 2006=100.0**

| Nace Rev.<br>2 code | Services categories   | 2 <sup>nd</sup> quarter |       |       | Annual rate of change (%) |           |
|---------------------|---|-------------------------|-------|-------|---------------------------|-----------|
|                     |   | 2011                    | 2010  | 2009  | 2011/2010                 | 2010/2009 |
| 494                 | Freight transport services by road and removal services       | 105.6                   | 106.7 | 109.5 | -1.1                      | -2.5      |
| 51                  | Air transport services  | 94.2                    | 93.8  | 91.8  | 0.4                       | 2.1       |
| 5210                | Warehousing and storage services                              | 106.9                   | 108.3 | 112.8 | -1.3                      | -4.0      |
| 5224                | Cargo handling services                                       | 105.9                   | 105.8 | 106.8 | 0.1                       | -1.0      |
| 53                  | Postal and courier services                                   | 118.9                   | 113.8 | 109.0 | 4.5                       | 4.4       |
| 531                 | Postal services under universal service obligation            | 121.2                   | 114.8 | 111.4 | 5.5                       | 3.0       |
| 532                 | Other postal and courier services                             | 115.2                   | 112.1 | 105.0 | 2.8                       | 6.7       |
| 692                 | Accounting, bookkeeping, auditing and tax consulting services | 112.3                   | 112.4 | 110.5 | 0.0                       | 1.7       |
| 712                 | Technical testing and analysis services                       | 100.0                   | 100.1 | 100.4 | -0.2                      | -0.2      |
| 7312                | Media representation services                                 | 115.1                   | 114.8 | 104.7 | 0.3                       | 9.7       |
| 732                 | Market research and public opinion services                   | 102.7                   | 108.3 | 109.1 | -5.2                      | -0.7      |
| 80                  | Security and investigation services                           | 121.2                   | 121.2 | 116.9 | 0.0                       | 3.7       |
| 812                 | Cleaning services   | 108.0                   | 107.5 | 106.3 | 0.4                       | 1.1       |

*Note:*

1. The indices are calculated with infinite decimal figures and are rounded up to one decimal figure when published

2. Percentage changes are calculated on the basis of the indices with five decimal figures and are rounded up to one decimal figure when published

**Table 2: Quarterly comparisons of the Producer Price Indices for Services**

**Base year: 2006=100.0**

| Nace<br>Rev. 2<br>code | Services categories  | 2011  |       |                          | 2010  |       |                          | 2009  |       |                          |
|------------------------|--|-------|-------|--------------------------|-------|-------|--------------------------|-------|-------|--------------------------|
|                        |  | Q2    | Q1    | Rate of<br>change<br>(%) | Q2    | Q1    | Rate of<br>change<br>(%) | Q2    | Q1    | Rate of<br>change<br>(%) |
| 494                    | Freight transport services<br>by road and removal<br>services          | 105.6 | 105.6 | 0.0                      | 106.7 | 106.6 | 0.1                      | 109.5 | 111.5 | -1.8                     |
| 51                     | Air transport services   | 94.2  | 86.2  | 9.3                      | 93.8  | 88.1  | 6.5                      | 91.8  | 91.7  | 0.1                      |
| 5210                   | Warehousing and<br>storage services                                    | 106.9 | 106.9 | 0.0                      | 108.3 | 108.1 | 0.2                      | 112.8 | 112.6 | 0.2                      |
| 5224                   | Cargo handling services  | 105.9 | 105.7 | 0.1                      | 105.8 | 106.1 | -0.3                     | 106.8 | 106.8 | 0.0                      |
| 53                     | Postal and courier<br>services   | 118.9 | 117.8 | 1.0                      | 113.8 | 112.6 | 1.0                      | 109.0 | 109.2 | -0.2                     |
| 531                    | Postal services under<br>universal service<br>obligation               | 121.2 | 119.9 | 1.0                      | 114.8 | 114.8 | 0.0                      | 111.4 | 111.4 | 0.0                      |
| 532                    | Other postal and<br>courier services                                   | 115.2 | 114.2 | 0.9                      | 112.1 | 109.0 | 2.8                      | 105.0 | 105.5 | -0.4                     |
| 692                    | Accounting,<br>bookkeeping, auditing<br>and tax consulting<br>services | 112.3 | 112.3 | 0.0                      | 112.4 | 112.4 | 0.0                      | 110.5 | 110.5 | 0.0                      |
| 712                    | Technical testing and<br>analysis services                             | 100.0 | 100.0 | 0.0                      | 100.1 | 101.1 | -0.9                     | 100.4 | 98.5  | 1.8                      |
| 7312                   | Media representation<br>services                                       | 115.1 | 111.1 | 3.7                      | 114.8 | 101.4 | 13.3                     | 104.7 | 99.3  | 5.4                      |
| 732                    | Market research and<br>public opinion services                         | 102.7 | 102.7 | 0.0                      | 108.3 | 108.3 | 0.0                      | 109.1 | 109.1 | 0.0                      |
| 80                     | Security and<br>investigation services                                 | 121.2 | 121.2 | 0.0                      | 121.2 | 121.2 | 0.0                      | 116.9 | 116.2 | 0.6                      |
| 812                    | Cleaning services  | 108.0 | 107.5 | 0.4                      | 107.5 | 107.5 | 0.0                      | 106.3 | 106.3 | 0.0                      |

*Note:*

- The indices are calculated with infinite decimal figures and are rounded up to one decimal figure when published*
- Percentage changes are calculated on the basis of the indices with five decimal figures and are rounded up to one decimal figure when published*

**Table 3: Evolution of Producer Price Indices for Services**

**Base year: 2006=100.0**

| Nace Rev. 2 code | Services categories   | 2007  |       |       |       |                |
|------------------|---|-------|-------|-------|-------|----------------|
|                  |   | Q1    | Q2    | Q3    | Q4    | Annual Average |
| 494              | Freight transport services by road and removal services       | 104.1 | 104.1 | 104.1 | 104.1 | 104.1          |
| 51               | Air transport services  | 93.7  | 99.8  | 100.4 | 95.2  | 97.3           |
| 5210             | Warehousing and storage services                              | 103.1 | 103.1 | 103.1 | 103.1 | 103.1          |
| 5224             | Cargo handling services                                       | 100.2 | 102.1 | 102.1 | 102.1 | 101.6          |
| 53               | Postal and courier services                                   | 101.5 | 101.7 | 101.8 | 104.5 | 102.4          |
| 531              | Postal services under universal service obligation            | 102.0 | 102.0 | 102.0 | 105.7 | 102.9          |
| 532              | Other postal and courier services                             | 100.7 | 101.1 | 101.5 | 102.5 | 101.5          |
| 692              | Accounting, bookkeeping, auditing and tax consulting services | 102.6 | 102.6 | 102.6 | 102.6 | 102.6          |
| 712              | Technical testing and analysis services                       | 100.5 | 100.6 | 97.9  | 97.3  | 99.1           |
| 7312             | Media representation services                                 | 98.5  | 95.7  | 84.4  | 110.0 | 97.2           |
| 732              | Market research and public opinion services                   | 103.8 | 103.8 | 103.8 | 104.2 | 103.9          |
| 80               | Security and investigation services                           | 107.0 | 107.3 | 107.3 | 107.8 | 107.4          |
| 812              | Cleaning services   | 102.7 | 103.1 | 103.6 | 103.3 | 103.2          |

| Nace Rev. 2 code | Services categories   | 2008  |       |       |       |                |
|------------------|---|-------|-------|-------|-------|----------------|
|                  |   | Q1    | Q2    | Q3    | Q4    | Annual Average |
| 494              | Freight transport services by road and removal services       | 106.1 | 109.0 | 111.8 | 111.4 | 109.6          |
| 51               | Air transport services  | 93.3  | 98.3  | 103.2 | 98.0  | 98.2           |
| 5210             | Warehousing and storage services                              | 109.6 | 109.6 | 109.6 | 109.6 | 109.6          |
| 5224             | Cargo handling services                                       | 106.6 | 106.6 | 106.6 | 106.6 | 106.6          |
| 53               | Postal and courier services                                   | 105.6 | 106.5 | 109.4 | 109.7 | 107.8          |
| 531              | Postal services under universal service obligation            | 106.3 | 107.0 | 111.0 | 111.4 | 108.9          |
| 532              | Other postal and courier services                             | 104.6 | 105.7 | 106.9 | 106.7 | 106.0          |
| 692              | Accounting, bookkeeping, auditing and tax consulting services | 108.0 | 108.0 | 108.0 | 108.0 | 108.0          |
| 712              | Technical testing and analysis services                       | 98.6  | 98.6  | 98.5  | 98.5  | 98.5           |
| 7312             | Media representation services                                 | 103.4 | 115.1 | 94.0  | 114.1 | 106.7          |
| 732              | Market research and public opinion services                   | 108.3 | 108.3 | 108.3 | 108.3 | 108.3          |
| 80               | Security and investigation services                           | 110.8 | 111.0 | 111.6 | 112.7 | 111.5          |
| 812              | Cleaning services   | 105.7 | 105.8 | 106.1 | 106.0 | 105.9          |

**Table 3: Evolution of Producer Price Indices for Services (continued)**

**Base year: 2006=100.0**

| Nace Rev. 2 code | Services categories   | 2009  |       |       |       |                |
|------------------|---|-------|-------|-------|-------|----------------|
|                  |   | Q1    | Q2    | Q3    | Q4    | Annual Average |
| 494              | Freight transport services by road and removal services       | 111.5 | 109.5 | 109.5 | 109.5 | 110.0          |
| 51               | Air transport services  | 91.7  | 91.8  | 92.9  | 91.9  | 92.1           |
| 5210             | Warehousing and storage services                              | 112.6 | 112.8 | 113.1 | 113.1 | 112.9          |
| 5224             | Cargo handling services                                       | 106.8 | 106.8 | 105.9 | 105.9 | 106.3          |
| 53               | Postal and courier services                                   | 109.2 | 109.0 | 109.4 | 110.9 | 109.6          |
| 531              | Postal services under universal service obligation            | 111.4 | 111.4 | 111.4 | 113.5 | 112.0          |
| 532              | Other postal and courier services                             | 105.5 | 105.0 | 105.9 | 106.7 | 105.8          |
| 692              | Accounting, bookkeeping, auditing and tax consulting services | 110.5 | 110.5 | 110.5 | 110.5 | 110.5          |
| 712              | Technical testing and analysis services                       | 98.5  | 100.4 | 100.4 | 100.9 | 100.0          |
| 7312             | Media representation services                                 | 99.3  | 104.7 | 95.7  | 116.3 | 104.0          |
| 732              | Market research and public opinion services                   | 109.1 | 109.1 | 109.1 | 108.5 | 109.0          |
| 80               | Security and investigation services                           | 116.2 | 116.9 | 118.0 | 118.0 | 117.3          |
| 812              | Cleaning services   | 106.1 | 106.3 | 107.3 | 107.6 | 106.8          |

| Nace Rev. 2 code | Services categories   | 2010  |       |       |       |                |
|------------------|---|-------|-------|-------|-------|----------------|
|                  |   | Q1    | Q2    | Q3    | Q4    | Annual Average |
| 494              | Freight transport services by road and removal services       | 106.6 | 106.7 | 106.7 | 106.7 | 106.7          |
| 51               | Air transport services  | 88.1  | 93.8  | 99.7  | 91.5  | 93.2           |
| 5210             | Warehousing and storage services                              | 108.1 | 108.3 | 108.3 | 108.3 | 108.2          |
| 5224             | Cargo handling services                                       | 106.1 | 105.8 | 105.9 | 105.4 | 105.8          |
| 53               | Postal and courier services                                   | 112.6 | 113.8 | 113.6 | 113.7 | 113.4          |
| 531              | Postal services under universal service obligation            | 114.8 | 114.8 | 114.8 | 114.8 | 114.8          |
| 532              | Other postal and courier services                             | 109.0 | 112.1 | 111.7 | 111.9 | 111.2          |
| 692              | Accounting, bookkeeping, auditing and tax consulting services | 112.4 | 112.4 | 112.4 | 112.4 | 112.4          |
| 712              | Technical testing and analysis services                       | 101.1 | 100.1 | 99.7  | 99.7  | 100.2          |
| 7312             | Media representation services                                 | 101.4 | 114.8 | 99.1  | 121.9 | 109.3          |
| 732              | Market research and public opinion services                   | 108.3 | 108.3 | 108.8 | 108.5 | 108.5          |
| 80               | Security and investigation services                           | 121.2 | 121.2 | 121.2 | 121.2 | 121.2          |
| 812              | Cleaning services   | 107.5 | 107.5 | 107.5 | 107.5 | 107.5          |

**Table 3: Evolution of Producer Price Indices for Services (continued)**

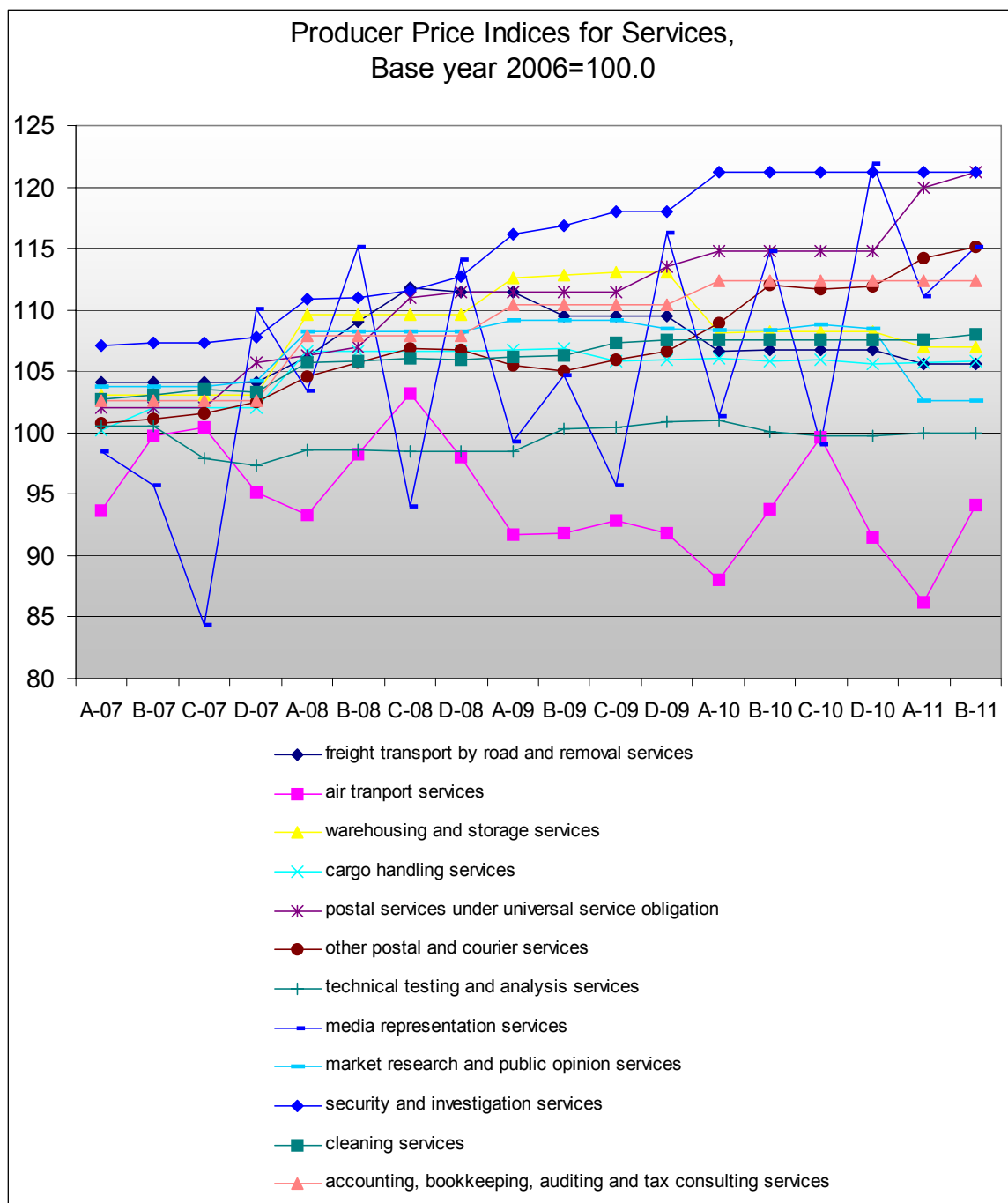
**Base year: 2006=100.0**

| Nace<br>Rev. 2<br>code | Services categories   | 2011  |       |    |    |                   |
|------------------------|---|-------|-------|----|----|-------------------|
|                        |   | Q1    | Q2    | Q3 | Q4 | Annual<br>Average |
| 494                    | Freight transport services by road and removal services       | 105.6 | 105.6 |    |    |                   |
| 51                     | Air transport services  | 86.2  | 94.2  |    |    |                   |
| 5210                   | Warehousing and storage services                              | 106.9 | 106.9 |    |    |                   |
| 5224                   | Cargo handling services                                       | 105.7 | 105.9 |    |    |                   |
| 53                     | Postal and courier services                                   | 117.8 | 118.9 |    |    |                   |
| 531                    | Postal services under universal service obligation            | 119.9 | 121.2 |    |    |                   |
| 532                    | Other postal and courier services                             | 114.2 | 115.2 |    |    |                   |
| 692                    | Accounting, bookkeeping, auditing and tax consulting services | 112.3 | 112.3 |    |    |                   |
| 712                    | Technical testing and analysis services                       | 100.0 | 100.0 |    |    |                   |
| 7312                   | Media representation services                                 | 111.1 | 115.1 |    |    |                   |
| 732                    | Market research and public opinion services                   | 102.7 | 102.7 |    |    |                   |
| 80                     | Security and investigation services                           | 121.2 | 121.2 |    |    |                   |
| 812                    | Cleaning services   | 107.5 | 108.0 |    |    |                   |

*Note:*

1. *The indices are calculated with infinite decimal figures and are rounded up to one decimal figure when published*
2. *Percentage changes are calculated on the basis of the indices with five decimal figures and are rounded up to one decimal figure when published*

**Diagram: Quarterly Evolution of Producer Price Indices for Services**



## METHODOLOGICAL NOTES

|   |  |
|---|--|
| <b>Generally</b>                            | The Producer Price Indices for Services (SPPI) are quarterly indices compiled for first time in Greece, with base year 2006=100.0.   |
| <b>Purpose of the indices – definitions</b> | <p>The purpose of these indices is to measure the quarterly rates of change in the producer prices of services and to record the prices evolution that reflect the supply and demand conditions in the service markets, for the analysis of the real changes in the economy and in monitoring inflationary pressures.</p> <p>The Producer Price Indices for Services are output price indices for the service production of resident producers. The SPPI cover services provided in the market for all uses, that is intermediate expenditure, final consumption and exports. However, the intermediate expenditure dominates, since the SPPI are restricted to those branches of services whose production is directed mainly to other productive units. Exceptions cases: the air transport services index, that is compiled as overall index (Business to All) and the two indices for postal and courier services, that are compiled as overall indices and also as partial indices for enterprises (Business to Business) and for consumers (Business to Consumer).</p> <p>The SPPI measure the prices of real transactions that reflect the price that the producer receives for services that are sold really to purchasers, including discounts, rebates or other surcharges. The collected prices are the basic prices for services sold, i.e. prices excluding VAT and other similar deductible taxes directly linked to turnover and also excluding all other taxes on products, but including subsidies on products.</p> |
| <b>Legal basis</b>                          | The Producer Price Indices for Services are compiled in compliance with the Council Regulation (EEC) No.1165/98 “concerning short-term statistics” as it was amended by the Regulation No.1158/05 of the European Parliament and of the Council. Moreover, the aforementioned indices are compiled in compliance with the Regulation (EEC) No.1893/2006 of the European Parliament and of the Council, as well as by the Regulation (EEC) No.451/2008 of the Council.  |
| <b>Reference period</b>                     | Quarter  |
| <b>Base year</b>                            | 2006=100.0.  |
| <b>Revision</b>                             | The SPPI are fixed base indices. Pursuant to the provisions of Council Regulation No 1165/98 concerning short-term statistics, the indices in question are updated every five (5) years in years ending in 0 or 5.   |
| <b>Statistical classifications</b>          | At the level of categories of economic activities the new Eurostat classification NACE Rev. 2 was used (Regulation 1893/2006), while at products-services level, the new Eurostat classification CPA 2008 was used, according to the Council Regulation 451/2008.  |
| <b>Geographical coverage</b>                | The Indices cover the whole of the country.  |
| <b>Coverage of economic activities</b>      | <p>The SPPI are compiled for the following services:</p> <ul style="list-style-type: none"><li>• Freight transport services by road and removal services (industry 494)</li><li>• Scheduled air transport services (industry 51)</li><li>• Warehousing and storage services (industry 5210)</li><li>• Cargo handling services (industry 5224)</li><li>• Postal and courier services (industry 53)</li><li>• Accounting, bookkeeping, auditing and tax consulting services (industry 692)</li><li>• Technical testing and analysis services (industry 712)</li><li>• Media representation services (industry 7312)</li><li>• Market research and public opinion polling services (industry 732)</li><li>• Security and investigation services (industry 80)</li><li>• Cleaning services (industry 812)</li></ul>  |
| <b>Statistical survey</b>                   | The data are collected from 155 enterprises, while the total number of observations (prices) is approximately 1720.  |
| <b>Publication of data</b>                  | The data on SPPI with base year 2006=100,0, have being released since March 2010, with fourth quarter of 2010 as first reference quarter. Data with base year 2006=100,0 are available from the first q 2007 onwards.  |



