



HELLENIC REPUBLIC



HELLENIC STATISTICAL AUTHORITY

Piraeus, 13 May 2011

## PRESS RELEASE

The Output Price Index in Agriculture and Livestock increased by 2.4% while the Input Price Index in Agriculture and Livestock increased by 10.5% in March 2011 compared with March 2010.

### INPUT AND OUTPUT PRICE INDICES IN AGRICULTURE – LIVESTOCK: March 2011

The evolution of the Input and Output Price Indices in Agriculture – Livestock, with base year 2005=100.0, according to provisional data, is as follows:

The Output Price Index in Agriculture and Livestock (excluding subsidies) increased by 2.4% in March 2011, compared with March 2010. A year ago, the index decreased by 1.6% (Table 1).

The Output Price Index in March 2011, compared with February 2011, increased by 4.7%. A year ago, the index increased by 5.9% (Table 2).

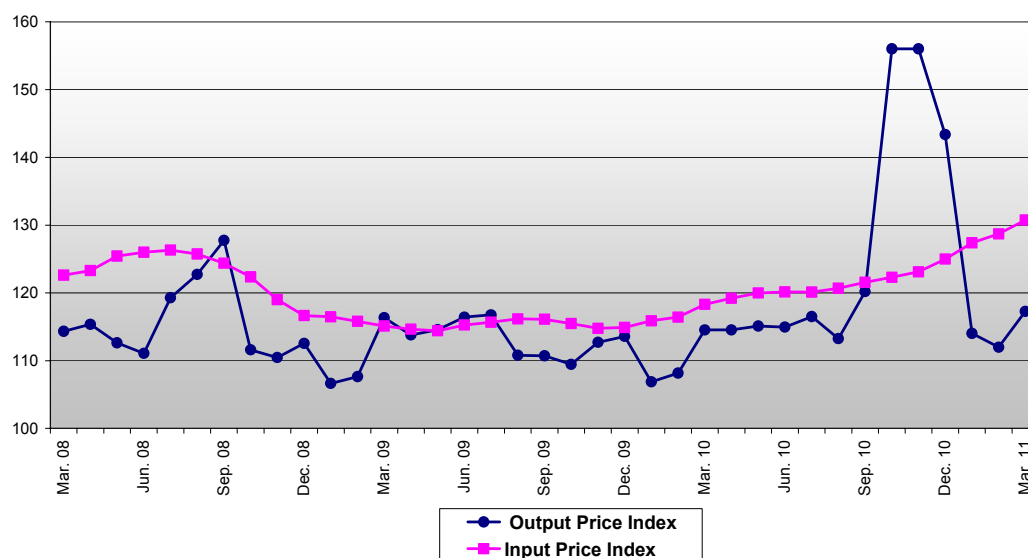
The twelve-month weighted average index, from April 2010 to March 2011, compared with the same index of the period from April 2009 to March 2010 increased by 14.3%. A year ago, the twelve-month weighted average index decreased by 1.8% (Table 3).

The Input Price Index in Agriculture and Livestock increased by 10.5% in March 2011, compared with March 2010. A year ago, the index increased by 2.8% (Table 4).

The Input Price Index in March 2011, compared with February 2011, increased by 1.6%. A year ago, the index increased by 1.6% (Table 5).

The twelve-month average index, from April 2010 to March 2011, compared with the same index of the period from April 2009 to March 2010 increased by 6.6%. A year ago, the twelve-month average index decreased by 4.7% (Table 6).

Evolution of Input and Output Price Indices in Agriculture - Livestock  
(2005=100.0)



Information:

Economic and Short-Term  
Indices Division

Wholesale Prices and  
Price Indices Section

Kossova Theodora  
Tel: 0030 213 1352745  
Fax: 0030 213 1352714

**Table 1: Output Price Indices in Agricultural and Livestock Production – Annual changes****Base year: 2005=100.0**

Code	Main groups	Weights	March			Change (%)	
			2011	2010	2009	2011/2010	2010/2009
140000	AGRICULTURAL GOODS OUTPUT (100000+130000). including fruits (060000) and vegetables (040000)	100,000	117.3	114.5	116.3	2.4	-1.6
141000	AGRICULTURAL GOODS OUTPUT (101000+130000). excluding fruits (060000) and vegetables (040000)	67,214	109.5	110.7	109.0	-1.1	1.6
100000	CROP OUTPUT (010000 TO 090000). including fruits (060000) and vegetables (040000)	71,504	123.0	117.6	122.5	4.5	-4.0
101000	CROP OUTPUT (010000 TO 090000). excluding fruits (060000) and vegetables (040000)	38,718	107.6	110.6	109.2	-2.7	1.2
010000	Cereals (including seeds)	6,952	148.5	134.9	140.9	10.0	-4.2
020000	Industrial Crops	13,977	248.1	305.4	309.5	-18.8	-1.3
030000	Forage Plants	3,293	123.1	124.3	127.5	-0.9	-2.5
040000	Vegetables and Horticultural Products	17,827	134.4	126.3	135.9	6.4	-7.0
050000	Potatoes (including seeds)	2,762	166.3	133.7	136.9	24.4	-2.3
060000	Fruits	14,959	129.5	112.8	120.2	14.8	-6.1
070000	Wine (incl. must)	288	113.9	113.9	114.3	0.0	-0.4
080000	Olive Oil	11,428	70.4	72.7	68.2	-3.2	6.6
090000	Other Crop Products	18	- <sup>(3)</sup>	-	-	-	-
130000	ANIMAL OUTPUT (110000+120000)	28,496	110.3	110.8	108.9	-0.4	1.7
110000	Animals	13,786	112.1	113.8	110.0	-1.5	3.4
120000	Animal Products	14,710	109.2	108.7	108.1	0.4	0.6

Note:

1. The indices are calculated with infinite decimal figures and are rounded up to one decimal figure when published.
2. Percentage changes are calculated on the basis of the indices with infinite decimal figure and are rounded up to one decimal figure when published.
3. Index is not calculated due to seasonality

**Table 2: Output Price Indices in Agricultural and Livestock Production – Monthly changes**

**Base year: 2005=100.0**

Code	Main groups	Weights	March 2011	February 2011	Δ (%)	March 2010	February 2010	Δ (%)
140000	AGRICULTURAL GOODS OUTPUT (100000+130000). including fruits (060000) and vegetables (040000)	100,000	117.3	112.0	4.7	114.5	108.2	5.9
141000	AGRICULTURAL GOODS OUTPUT (101000+130000). excluding fruits (060000) and vegetables (040000)	67,214	109.5	105.2	4.0	110.7	104.2	6.2
100000	CROP OUTPUT (010000 TO 090000). including fruits (060000) and vegetables (040000)	71,504	123.0	113.2	8.6	117.6	106.4	10.5
101000	CROP OUTPUT (010000 TO 090000). excluding fruits (060000) and vegetables (040000)	38,718	107.6	93.3	15.3	110.6	91.9	20.4
010000	Cereals (including seeds)	6,952	148.5	148.1	0.2	134.9	135.1	-0.1
020000	Industrial Crops	13,977	248.1	81.9	202.9	305.4	82.1	272.1
030000	Forage Plants	3,293	123.1	122.7	0.3	124.3	124.7	-0.3
040000	Vegetables and Horticultural Products	17,827	134.4	132.9	1.2	126.3	125.9	0.4
050000	Potatoes (including seeds)	2,762	166.3	158.5	4.9	133.7	135.8	-1.6
060000	Fruits	14,959	129.5	123.5	4.9	112.8	107.2	5.2
070000	Wine (incl. must)	288	113.9	112.9	0.8	113.9	113.6	0.3
080000	Olive Oil	11,428	70.4	70.5	-0.2	72.7	72.7	-0.1
090000	Other Crop Products	18	- <sup>(3)</sup>	-	-	-	-	-
130000	ANIMAL OUTPUT (110000+120000)	28,496	110.3	110.7	-0.3	110.8	109.9	0.8
110000	Animals	13,786	112.1	113.5	-1.2	113.8	113.1	0.6
120000	Animal Products	14,710	109.2	109.1	0.1	108.7	108.1	0.6

Note:

1. The indices are calculated with infinite decimal figures and are rounded up to one decimal figure when published.
2. Percentage changes are calculated on the basis of the indices with infinite decimal figure and are rounded up to one decimal figure when published.
3. Index is not calculated due to seasonality.

Table 3: Output Price Index in Agricultural and Livestock Changes

Base year: 2005=100.0

Year and Month		Overall Index	Monthly Changes (%)	Annual Changes (%)	12-month moving weighted average	12- month moving weighted average changes (%)
<b>2009:</b>	I	106.6	-5.2	-5.5	114.5	-4.1
	II	107.6	0.9	-4.7	114.2	-4.9
	III	116.3	8.1	1.8	114.3	-5.2
	IV	113.8	-2.2	-1.4	114.2	-5.9
	V	114.6	0.7	1.7	114.4	-6.1
	VI	116.4	1.6	4.8	114.7	-6.2
	VII	116.7	0.3	-2.1	114.6	-6.6
	VIII	110.8	-5.1	-9.7	113.8	-7.4
	IX	110.7	-0.1	-13.3	112.3	-8.3
	X	109.5	-1.1	-1.9	112.0	-6.3
	XI	112.7	3.0	2.0	112.3	-4.0
	XII	113.6	0.8	1.0	112.4	-2.2
<i>Annual Average</i>		<b>112.4</b>			<b>112.4</b>	<b>-2.2</b>
<b>2010:</b>	I	106.9	-5.9	0.2	112.4	-1.9
	II	108.2	1.2	0.5	112.4	-1.5
	III	114.5	5.9	-1.6	112.3	-1.8
	IV	114.5	0.0	0.7	112.4	-1.6
	V	115.1	0.5	0.5	112.4	-1.7
	VI	114.9	-0.1	-1.3	112.3	-2.1
	VII	116.5	1.3	-0.2	112.3	-2.0
	VIII	113.2	-2.8	2.2	112.4	-1.2
	IX	120.2	6.1	8.6	113.3	0.8
	X	156.0	29.8	42.5	119.7	6.8
	XI	156.0	0.0	38.4	124.3	10.7
	XII	143.4	-8.1	26.2	127.5	13.5
<i>Annual Average</i>		<b>127.5</b>			<b>127.5</b>	<b>13.5</b>
<b>2011:</b>	I	114.0	-20.5	6.7	128.0	13.8
	II	112.0	-1.8	3.5	128.2	14.0
	III	117.3	4.7	2.4	128.4	14.3
	IV					
	V					
	VI					
	VII					
	VIII					
	IX					
	X					
	XI					
	XII					
<i>Annual Average</i>						

Note:

1. The indices are calculated with infinite decimal figures and are rounded up to one decimal figure when published.
2. Percentage changes are calculated on the basis of the indices with five decimal figures and are rounded up to one decimal figure when published.

**Table 4: Input Price Indices in Agricultural and Livestock Production – Annual changes****Base year: 2005=100.0**

Code	Main groups	Weights	March			Change (%)	
			2011	2010	2009	2011/2010	2010/2009
220000	Input Total	100,000	130.7	118.3	115.1	10.5	2.8
200000	Goods and services currently consumed in agriculture	64,792	141.3	122.8	117.2	15.1	4.8
201000	Seeds and planting stock	5,393	122.0	120.9	121.8	0.9	-0.8
202000	Energy and lubricants	16,335	172.3	137.1	106.1	25.7	29.2
203000	Fertilizers and soil improvers	4,626	142.9	138.5	170.5	3.2	-18.8
204000	Plant protection products and pesticides	4,128	114.4	113.7	111.8	0.6	1.7
205000	Veterinary expenses	1,505	117.7	113.6	109.1	3.6	4.1
206000	Animal feedingstuffs	25,461	142.2	118.9	121.3	19.6	-2.0
207000	Maintenance of materials	1,739	132.1	127.4	126.1	3.7	1.0
208000	Maintenance of buildings	223	119.0	117.3	117.1	1.5	0.2
209000	Other goods and services	5,382	92.3	94.8	85.0	-2.6	11.5
210000	Goods and services contributing to agricultural investment	35,208	111.3	110.0	111.2	1.2	-1.1
211000	Materials	29,219	110.1	109.0	110.8	1.0	-1.6
211110	Rotovators and other 2 wheel equipment	1,635	114.4	112.9	111.6	1.3	1.1
211120	Machinery and plant for cultivation	976	127.1	123.7	122.5	2.8	1.0
211130	Machinery and plant for harvesting	1,425	116.7	115.9	114.7	0.7	1.1
211140	Farm machinery and installations	5,579	120.4	117.4	116.5	2.6	0.8
211210	Tractors	1,895	112.2	110.7	110.3	1.3	0.3
211290	Other vehicles	17,709	104.7	104.4	108.0	0.3	-3.3
212000	Buildings	5,989	117.0	114.7	113.1	2.0	1.5

Note:

1. The indices are calculated with infinite decimal figures and are rounded up to one decimal figure when published.
2. Percentage changes are calculated on the basis of the indices with five decimal figures and are rounded up to one decimal figure when published.

**Table 5: Input Price Indices in Agricultural and Livestock Production – Monthly changes****Base year: 2005=100.0**

Code	Main groups	Weights	March 2011	February 2011	Δ (%)	March 2010	February 2010	Δ (%)
220000	Input Total	100,000	130.7	128.7	1.6	118.3	116.4	1.6
200000	Goods and services currently consumed in agriculture	64,792	141.3	138.3	2.2	122.8	120.1	2.3
201000	Seeds and planting stock	5,393	122.0	121.6	0.3	120.9	120.6	0.2
202000	Energy and lubricants	16,335	172.3	165.8	3.9	137.1	126.7	8.2
203000	Fertilizers and soil improvers	4,626	142.9	140.2	2.0	138.5	139.3	-0.6
204000	Plant protection products and pesticides	4,128	114.4	113.3	0.9	113.7	114.2	-0.4
205000	Veterinary expenses	1,505	117.7	117.7	0.0	113.6	113.8	-0.1
206000	Animal feedingstuffs	25,461	142.2	139.4	2.0	118.9	118.8	0.1
207000	Maintenance of materials	1,739	132.1	131.7	0.3	127.4	128.1	-0.5
208000	Maintenance of buildings	223	119.0	118.8	0.2	117.3	117.2	0.1
209000	Other goods and services	5,382	92.3	92.2	0.2	94.8	98.2	-3.5
210000	Goods and services contributing to agricultural investment	35,208	111.3	111.1	0.2	110.0	109.7	0.3
211000	Materials	29,219	110.1	109.9	0.2	109.0	108.7	0.3
211110	Rotovators and other 2 wheel equipment	1,635	114.4	113.5	0.8	112.9	112.5	0.3
211120	Machinery and plant for cultivation	976	127.1	126.6	0.5	123.7	124.0	-0.3
211130	Machinery and plant for harvesting	1,425	116.7	116.5	0.2	115.9	116.2	-0.2
211140	Farm machinery and installations	5,579	120.4	120.1	0.3	117.4	116.9	0.4
211210	Tractors	1,895	112.2	111.7	0.4	110.7	110.9	-0.2
211290	Other vehicles	17,709	104.7	104.6	0.1	104.4	104.1	0.3
212000	Buildings	5,989	117.0	117.0	0.0	114.7	114.4	0.3

Note:

1. The indices are calculated with infinite decimal figures and are rounded up to one decimal figure when published.
2. Percentage changes are calculated on the basis of the indices with five decimal figures and are rounded up to one decimal figure when published.

Table 6: Input Price Index in Agricultural and Livestock Changes

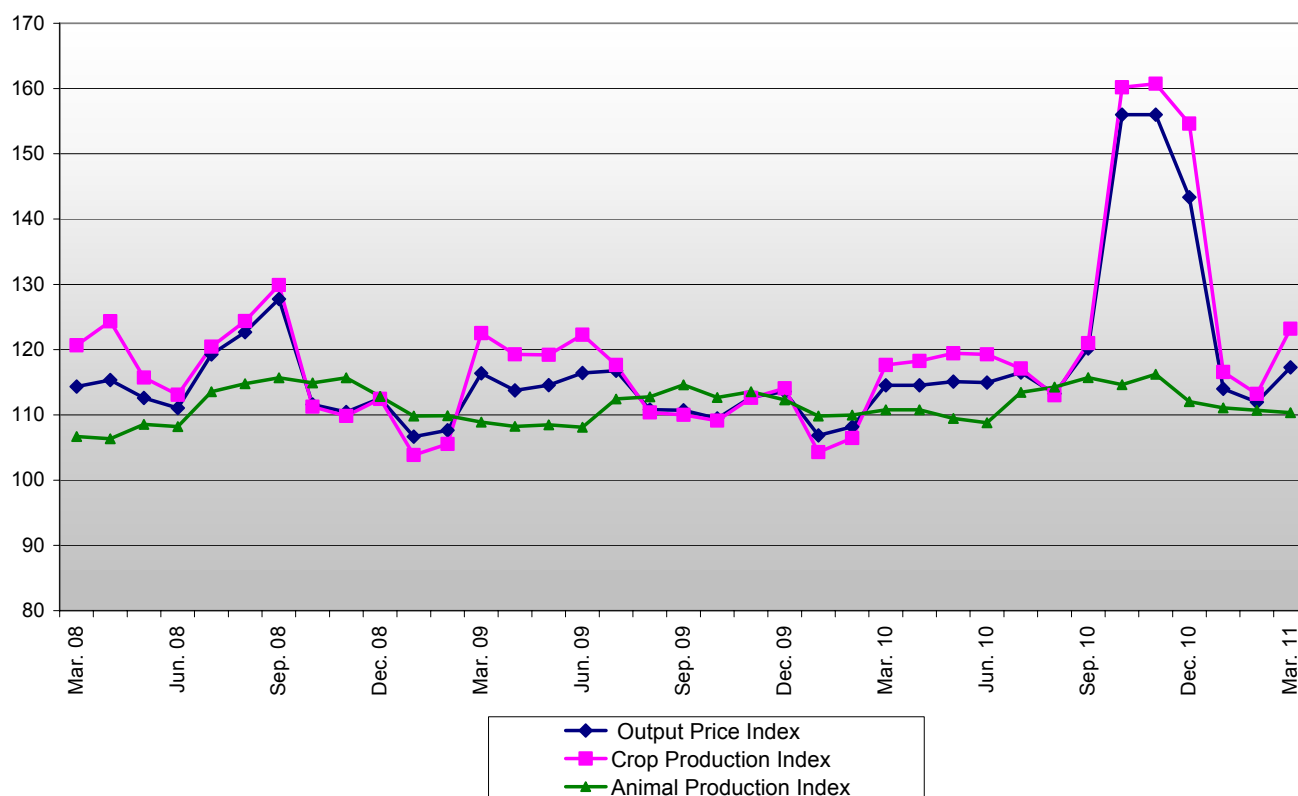
Base year: 2005=100.0

Year and Month		Overall Index	Monthly Changes (%)	Annual Changes (%)	12-month moving average	12- month moving average changes (%)
<b>2009:</b>	I	116.5	-0.1	-2.8	122.4	9.6
	II	115.8	-0.6	-4.3	122.0	8.1
	III	115.1	-0.6	-6.1	121.4	6.4
	IV	114.6	-0.4	-7.0	120.6	4.5
	V	114.4	-0.2	-8.8	119.7	2.5
	VI	115.3	0.8	-8.5	118.8	0.4
	VII	115.7	0.3	-8.4	118.0	-1.5
	VIII	116.2	0.4	-7.6	117.2	-3.2
	IX	116.1	-0.1	-6.6	116.5	-4.5
	X	115.5	-0.5	-5.6	115.9	-5.5
	XI	114.8	-0.6	-3.6	115.5	-5.9
	XII	114.9	0.1	-1.5	115.4	-6.0
<i>Annual Average</i>		<b>115.4</b>			<b>115.4</b>	<b>-6.0</b>
<b>2010:</b>	I	115.9	0.8	-0.5	115.3	-5.8
	II	116.4	0.5	0.5	115.4	-5.4
	III	118.3	1.6	2.8	115.7	-4.7
	IV	119.2	0.8	4.0	116.0	-3.8
	V	120.0	0.7	4.9	116.5	-2.7
	VI	120.1	0.1	4.2	116.9	-1.6
	VII	120.1	0.0	3.8	117.3	-0.6
	VIII	120.7	0.5	3.9	117.7	0.4
	IX	121.5	0.7	4.7	118.1	1.4
	X	122.3	0.6	5.9	118.7	2.4
	XI	123.1	0.7	7.3	119.4	3.3
	XII	125.0	1.5	8.8	120.2	4.2
<i>Annual Average</i>		<b>120.2</b>			<b>120.2</b>	<b>4.2</b>
<b>2011:</b>	I	127.4	1.9	10.0	121.2	5.1
	II	128.7	1.0	10.6	122.2	5.9
	III	130.7	1.6	10.5	123.2	6.6
	IV					
	V					
	VI					
	VII					
	VIII					
	IX					
	X					
	XI					
	XII					
<i>Annual Average</i>						

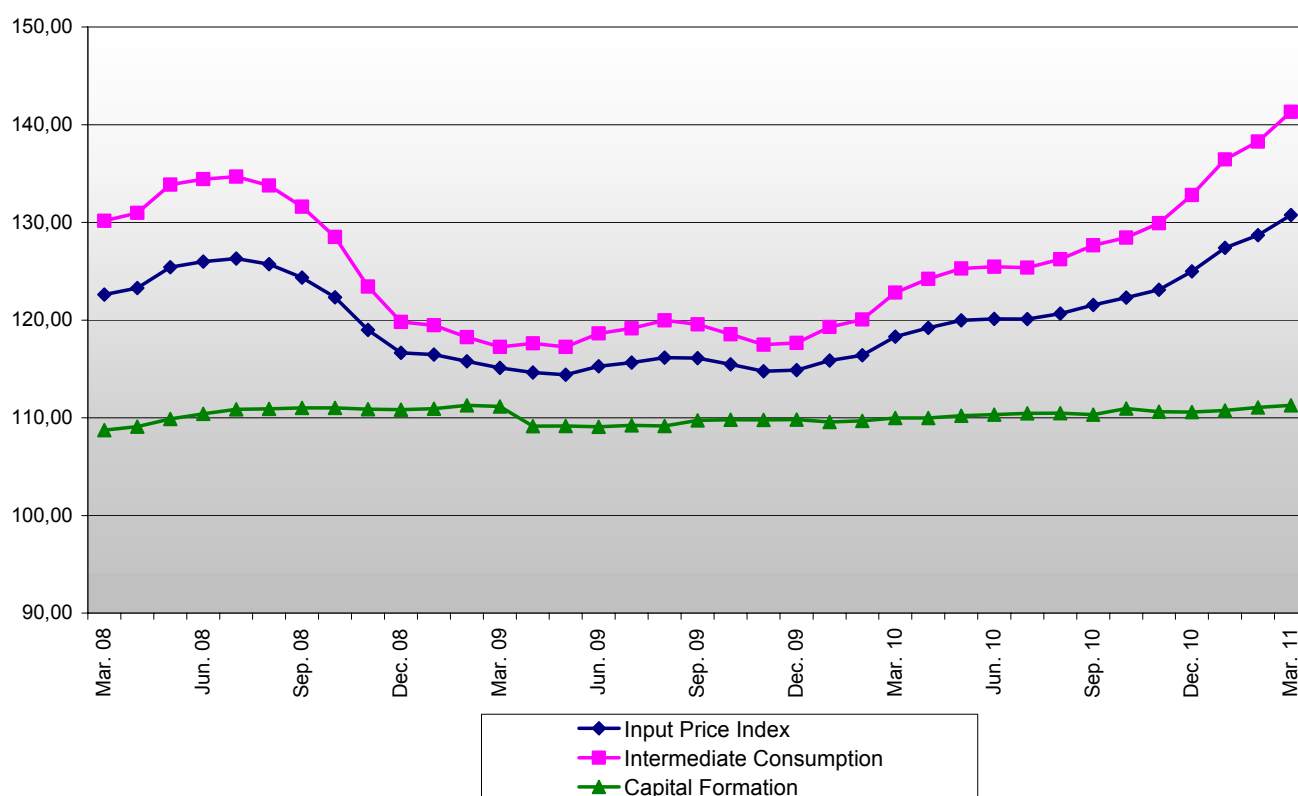
Note:

1. The indices are calculated with infinite decimal figures and are rounded up to one decimal figure when published.
2. Percentage changes are calculated on the basis of the indices with five decimal figures and are rounded up to one decimal figure when published.

**Graph 1: Evolution of the Output Price Index in Agriculture – Livestock  
and of the groups of Crop and Animal Production (2005=100.0)**

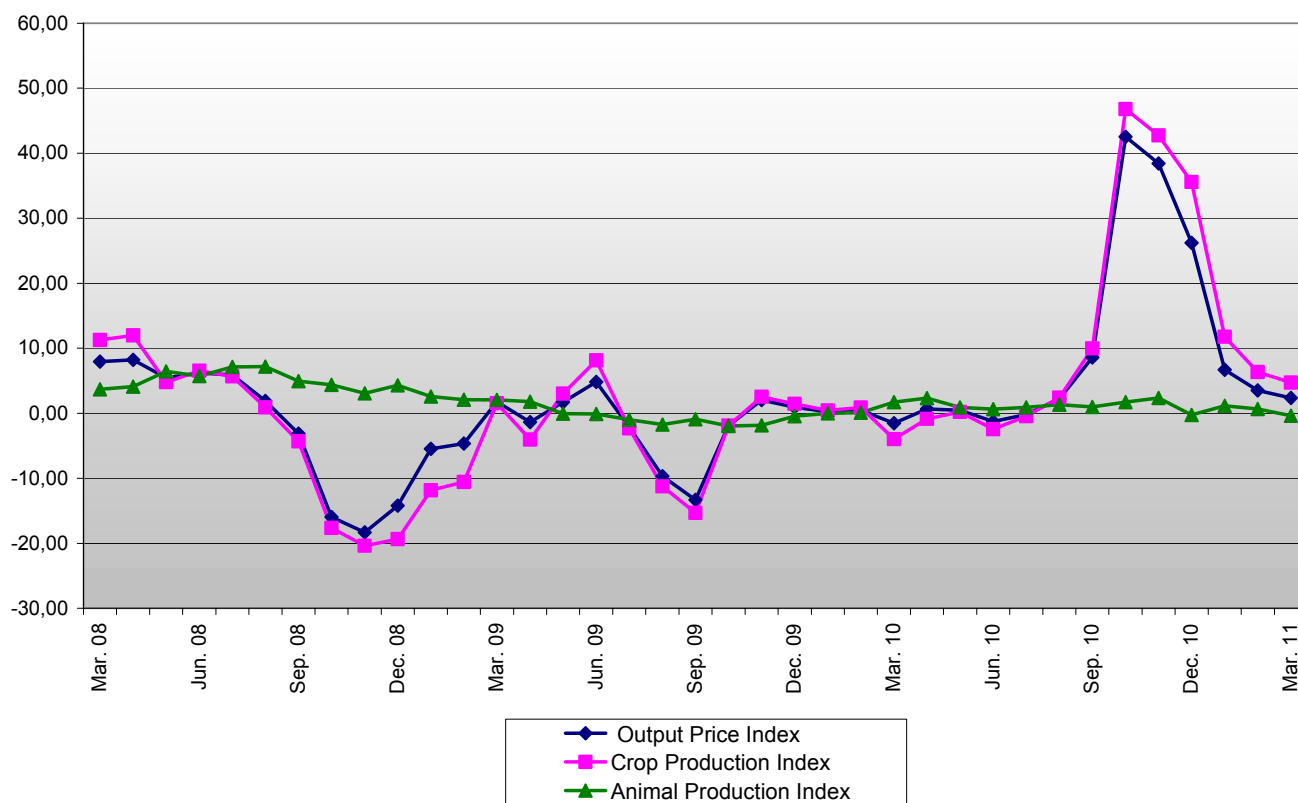


**Graph 2: Evolution of the Input Price Index in Agriculture – Livestock  
and of the groups of Intermediate Consumption and Capital Formation (2005=100.0)**

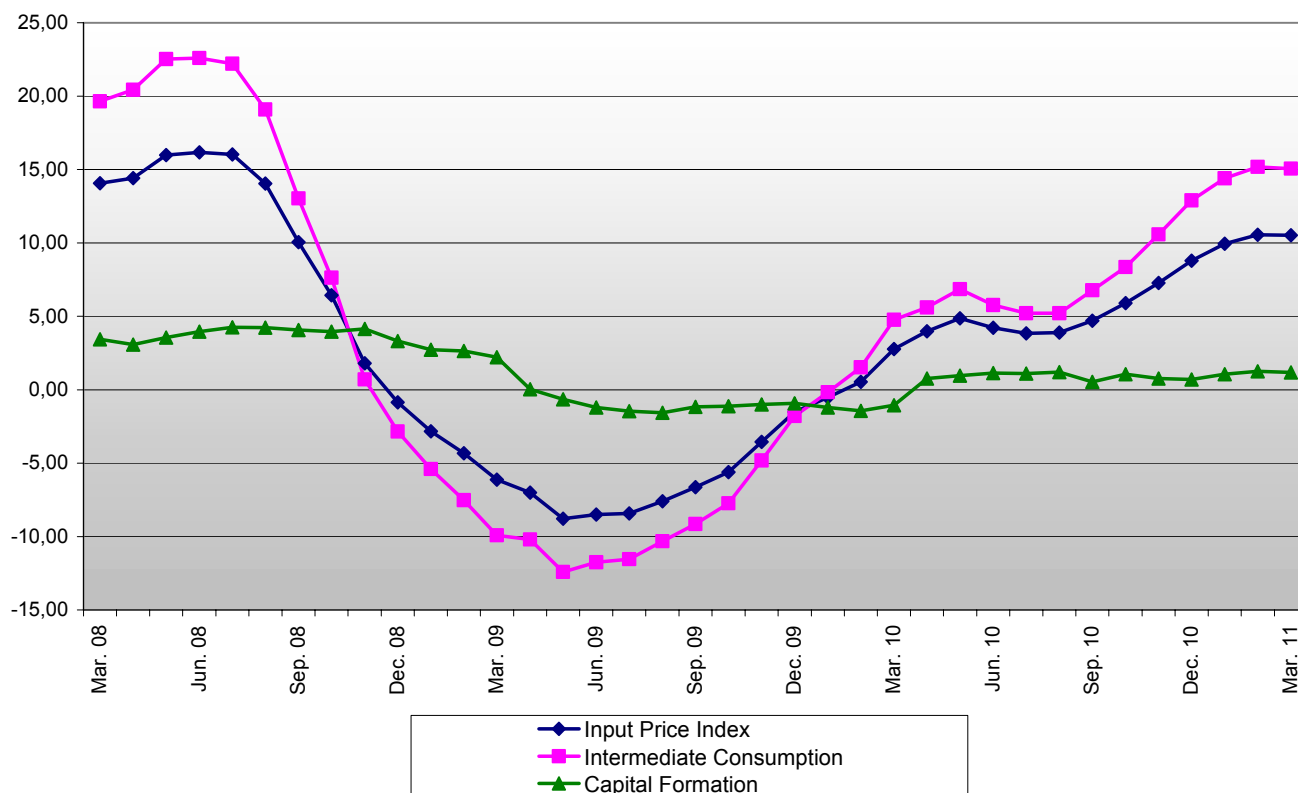




**Graph 3: Annual changes of the Output Price Index in Agriculture – Livestock  
and of the Indices of Crop and Animal Production (2005=100.0)**



**Graph 4: Annual changes of the Input Price Index in Agriculture – Livestock and of the Indices of Intermediate  
Consumption and Capital Formation (2005=100.0)**



## METHODOLOGICAL NOTES

<b>Generally</b>	The compilation of the Input and Output Price Indices in agriculture and livestock started in 1967 with base year 1966=100.0. These indices are being released with their current form since January 2005. when they replaced the previous indices with base year 2000.
<b>Purpose of the indices– definitions</b>	<p>The purpose of the Output Price Index is to measure the relative change of prices that the producers receive in the agricultural – livestock sector. from the sale of their products. The purpose of the Input Price Index is to measure the change in the prices paid for by them for the purchase of the means they use in the production process.</p> <p>The Output Price Index is divided into the crop and the animal output index. The Input Price Index is compiled from the aggregation of the price indices of the intermediate inputs and the fixed capital formation goods.</p> <p>As regards the Output Price Index. the prices collected are the market prices of the products. The market price is defined as the price received by the producer without the deduction of taxes or levies (except deductible VAT) and excluding subsidies.</p> <p>As regards the Input Price Index. the prices collected refer to the prices paid for by the producers to buy the goods and services they need for their agricultural and livestock production. excluding VAT and transport expenses.</p>
<b>Legal basis</b>	The compilation of the Input and Output Indices in agriculture and livestock is based on voluntary agreements between Eurostat and the Member States. The foundations for these agreements were laid in the early seventies.
<b>Reference period</b>	Month
<b>Base year</b>	2005=100.0.
<b>Revision</b>	Input and Output price indices are fixed base year indices. These indices are updated every five (5) years in years ending in 0 or 5. The most recent revision is with base year 2005=100.0. with January 2009 as first reference month.
<b>Statistical classification</b>	According to the common methodology of the member states of EU and Eurostat. the groups of products of the Agricultural Price Indices follow the same classification of the groups as in EAA (Economic Agricultural Accounts).
<b>Geographical coverage</b>	The indices cover the whole of the country.
<b>Coverage of economic activities</b>	The Input and Output Price Indices cover the transactions for products and services in the sector of agriculture and livestock. In addition. the olive oil and must – wine transactions are covered. which are included in the manufacturing sector when their production – manufacturing process takes place at the level of agricultural unit and thus it is considered to be an activity of the agricultural sector.
<b>Seasonality</b>	Seasonality influences the agricultural and livestock production and as a result some products are not available every month in a calendar year. Therefore. the annual weighing coefficients are divided only in the months when the products are available.
<b>Statistical survey</b>	<p>The sources of price collection are the agricultural cooperatives (unions). which collect the final products. as well as the commercial and the industrial enterprises. which buy the final products directly from the producers.</p> <p>The price data for the output price index are collected from approximately 734 sources and those for input prices are collected from approximately 709 sources.</p>
<b>Publication of data</b>	The Input – Output Price Indices with the new base year (2005) are being released since March 2009. with January 2009 as first reference month. The time series with base year 2005=100.0 are available from January 2000 onwards.
<b>References</b>	More information on the methodology concerning the compilation and calculation of the indices and for the time series is available on the EL.STAT. website ( <a href="http://www.statistics.gr">www.statistics.gr</a> ).