



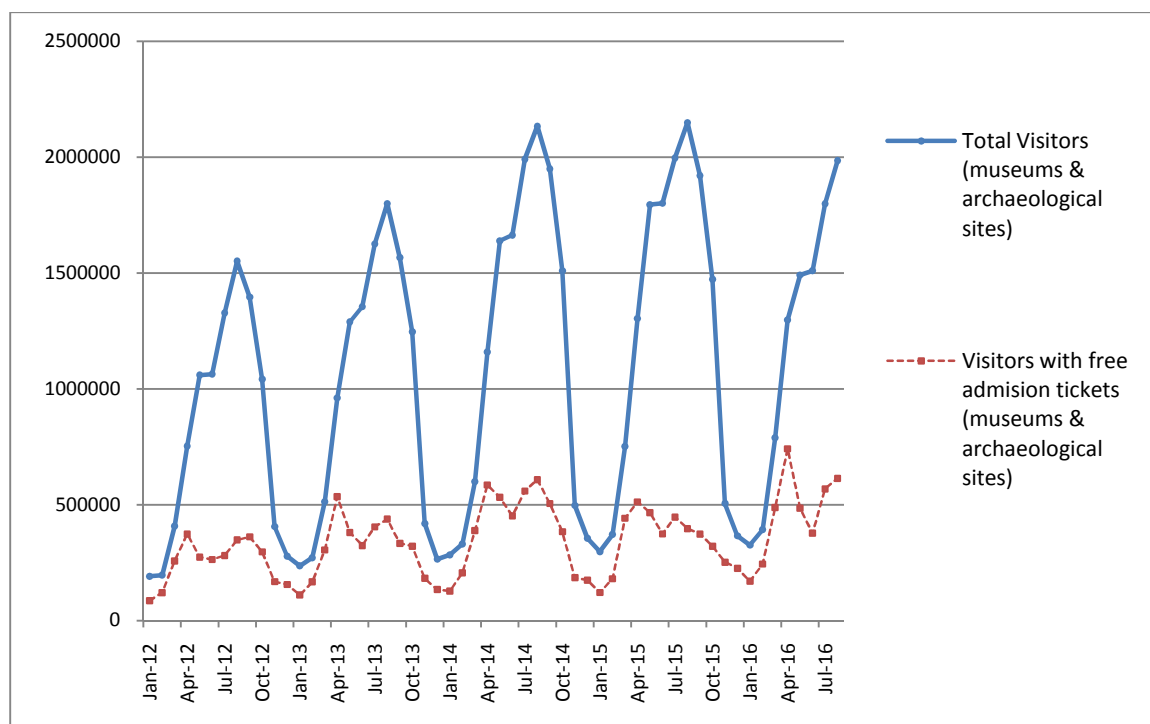
PRESS RELEASE

MUSEUMS AND ARCHAEOLOGICAL SITES ATTENDANCE SURVEY AUGUST 2016

The Hellenic Statistical Authority (ELSTAT) announces the results of the *Survey on Museums and Archaeological Sites Attendance* for August 2016. In particular:

- During August 2016, **Museums** experienced a 5.6% decrease in the number of visitors and an 51.8% increase in the number of free admission visitors. An increase of 13.4% was recorded in their receipts, in comparison with the corresponding month of 2015 (Table 1).
- The number of visitors at **Archaeological sites**, in August 2016, recorded a decrease of 8.4% and 55.9% increase was observed in the number of free admission visitors. An increase of 76.5% was recorded in their receipts in comparison with the corresponding month of 2015 (Table 1).
- During the eight month period from January to August 2016, there was a 2.7% decrease in the number of visitors of Museums and an increase of 26.4% in the number of free admission visitors. The corresponding receipts increased by 4.6% in comparison with the corresponding period of 2015 (Table 2).
- As regards Archaeological sites, during the eight month period from January to August of 2016 a decrease of 10.7% was recorded in the number of visitors and a 20.1% increase was observed in the number of free admission visitors. The corresponding receipts increased by 61.8%, in comparison with the corresponding period of 2015 (Table 2).

Graph 1: Visitors of Museums and Archaeological sites (Jan 2012 – Aug 2016)



Information:

Social Statistics Division

Section of Culture and Sports statistics.

Argyro Pateraki (Tel: +30 213 1352129, e-mail: ar.pateraki@statistics.gr)

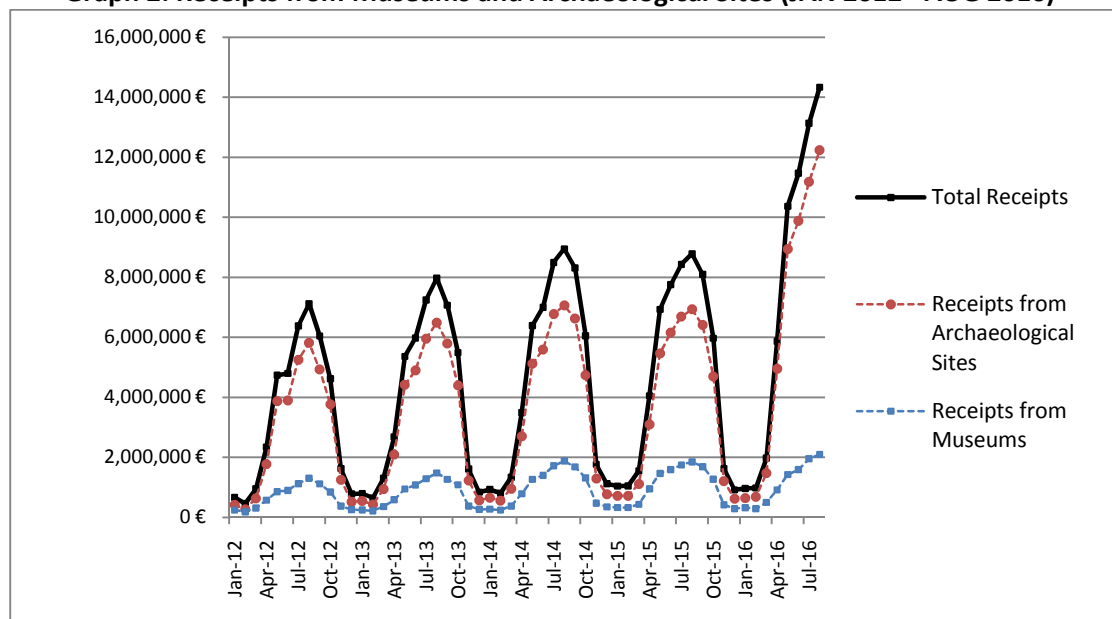
**TABLE 1: VISITORS OF MUSEUMS AND ARCHAEOLOGICAL SITES - TOTAL RECEIPTS
(AUGUST 2015 & AUGUST 2016)**

I. VISITORS			
Museums and Archaeological sites	2015	2016	Change 2016/2015
Total number of visitors (A+B)	2,148,456	1,984,791	-7.6%
A. Museums (C+E)	573,946	541,974	-5.6%
Acropolis Museum	189,190	168,276	-11.1%
National Archaeological	54,730	53,222	-2.8%
Ancient Olympia	14,931	15,018	0.6%
Palace of the Grand Master (Rhodes)	47,411	45,442	-4.2%
Herakleion Archaeological (Crete)	36,468	31,620	-13.3%
Rhodes	17,755	12,610	-29.0%
Delphi	20,919	16,488	-21.2%
Other Museums	192,542	199,298	3.5%
B. Archaeological Sites (D+F)	1,574,510	1,442,817	-8.4%
Epidavros ⁽¹⁾	59,053	54,735	-7.3%
The Acropolis of Mycenae & Atreus' Treasure	49,172	44,887	-8.7%
The Acropolis of Athens	265,451	214,021	-19.4%
Sounio	28,372	27,196	-4.1%
The Acropolis of Lindos	117,462	87,591	-25.4%
Kameiros (Rhodes)	25,109	18,887	-24.8%
Ancient Olympia	68,061	73,956	8.7%
Knossos (Crete)	114,530	115,194	0.6%
Phaistos (Crete)	15,992	14,673	-8.2%
Ancient Korinthos ⁽¹⁾	14,513	17,405	19.9%
Mystras ⁽¹⁾	20,135	19,392	-3.7%
Delphi	38,742	35,894	-7.4%
Other Archaeological sites	757,918	718,986	-5.1%
II. VISITORS WHO PAID TICKET			
	2015	2016	Change 2016/2015
Total number of visitors who paid ticket (C+D)	1,751,597	1,371,383	-21.7%
C. Museums	443,274	343,616	-22.5%
D. Archaeological sites	1,308,323	1,027,767	-21.4%
III. VISITORS WITH FREE ADMISSION TICKETS			
	2015	2016	Change 2016/2015
Total number of visitors with free admission ticket (E+F)	396,859	613,408	54.6%
E. Museums	130,672	198,358	51.8%
F. Archaeological sites	266,187	415,050	55.9%
IV. RECEIPTS (euros)			
	2015	2016	Change 2016/2015
Total Receipts (G+H)	8,784,435,00	14,333,176,00	63.2%
G. Museums	1,851,759,00	2,099,341,00	13.4%
H. Archaeological sites	6,932,676,00	12,233,835,00	76.5%

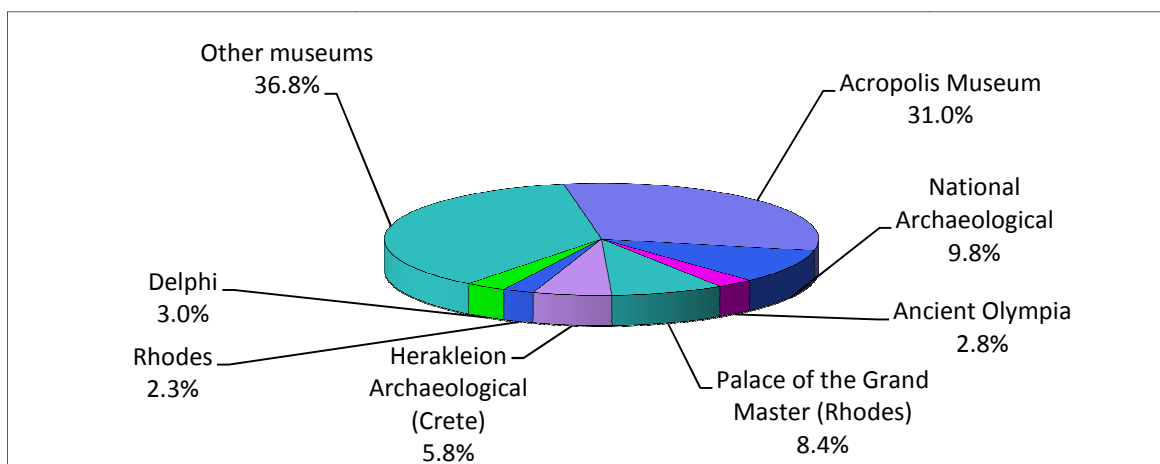
⁽¹⁾ Flat rate ticket. valid both for the museum and the Archaeological site.

In the following graphs we can observe the evolution of the Receipts (Graph 2) so as the visitors by Museum and Archaeological Site (Graphs 3 and 4 respectively).

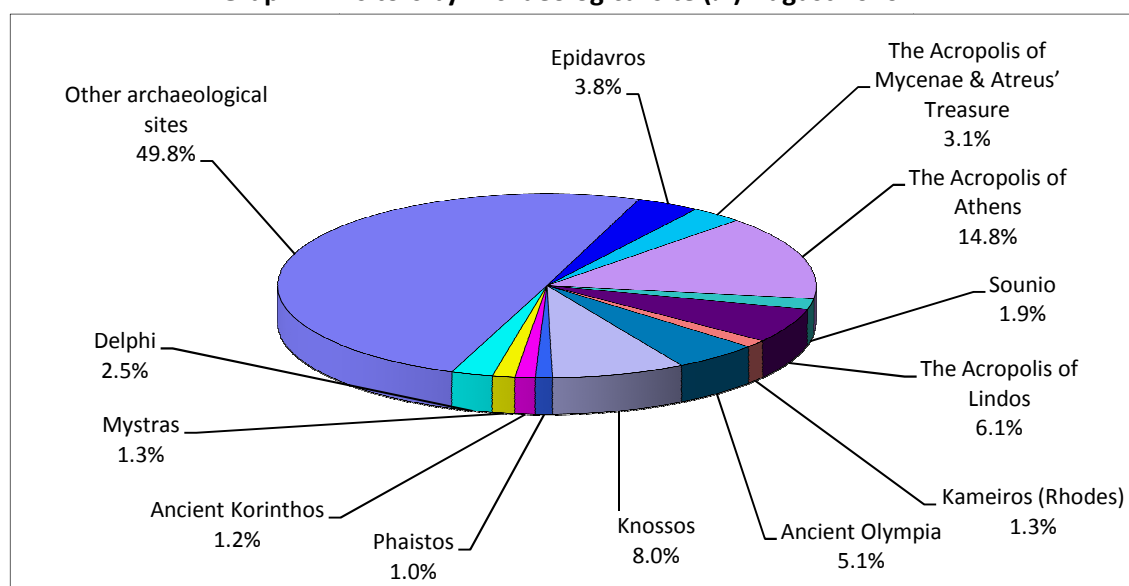
Graph 2: Receipts from Museums and Archaeological Sites (JAN 2012 - AUG 2016)



Graph 3: Visitors by Museum (%) August 2016



Graph 4: Visitors by Archaeological site (%) August 2016



**TABLE 2: VISITORS OF MUSEUMS AND ARCHAEOLOGICAL SITES - TOTAL RECEIPTS
(2014.2015. AND JANUARY- AUGUST 2015 & 2016)**

I. VISITORS					
Museums and Archaeological sites	2014	2015	JANUARY- AUGUST		change
			2015	2016	2016/2015
Total number of visitors (A+B)	14,107,303	14,725,895	10,462,253	9,586,967	-8.4%
A. Museums (C+E)	4,154,142	4,405,842	3,101,131	3,016,657	-2.7%
Acropolis Museum	1,377,409	1,510,615	1,070,674	956,805	-10.6%
National Archaeological	459,115	476,754	338,096	307,966	-8.9%
Ancient Olympia	134,976	135,972	99,932	91,184	-8.8%
Palace of the Grand Master (Rhodes)	258,906	251,091	177,773	158,286	-11.0%
Herakleion Archaeological (Crete)	198,942	201,657	133,583	235,102	76.0%
Rhodes	79,878	87,824	61,904	45,959	-25.8%
Delphi	190,314	205,369	152,422	117,542	-22.9%
Other Museums	1,454,602	1,536,560	1,066,747	1,103,813	3.5%
B. Archaeological Sites (D+F)	9,953,161	10,320,053	7,361,122	6,570,310	-10.7%
Epidavros ⁽¹⁾	416,323	443,565	338,759	273,411	-19.3%
The Acropolis of Mycenae & Atreus' Treasure	377,336	402,565	304,733	250,369	-17.8%
The Acropolis of Athens	1,563,434	2,043,868	1,438,728	1,243,185	-13.6%
Sounio	203,269	236,285	175,265	157,113	-10.4%
The Acropolis of Lindos	630,042	580,875	418,145	290,405	-30.5%
Kameiros (Rhodes)	177,859	152,204	108,982	76,612	-29.7%
Ancient Olympia	464,990	439,836	304,511	301,359	-1.0%
Knossos (Crete)	670,499	632,288	437,590	434,207	-0.8%
Phaistos (Crete)	105,643	94,689	67,000	52,883	-21.1%
Ancient Korinthos ⁽¹⁾	161,819	141,490	101,049	105,172	4.1%
Mystras ⁽¹⁾	113,815	117,010	88,604	84,297	-4.9%
Delphi	293,944	319,754	241,638	203,293	-15.9%
Other Archaeological sites	4,774,188	4,715,624	3,336,118	3,098,004	-7.1%
II. VISITORS WHO PAID TICKET					
	2014	2015	JANUARY- AUGUST		change
			2015	2016	2016/2015
Total number of visitors who paid ticket (C+D)	9,389,965	10,544,249	7,452,076	5,900,880	-20.8%
C. Museums	2,438,365	2,867,641	1,992,233	1,614,726	-18.9%
D. Archaeological sites	6,951,600	7,676,608	5,459,843	4,286,154	-21.5%
III. VISITORS WITH FREE ADMISSION TICKETS					
	2014	2015	JANUARY- AUGUST		change
			2015	2016	2016/2015
Total number of visitors with free admission ticket (E+F)	4,717,338	4,181,646	3,010,177	3,686,087	22.5%
E. Museums	1,715,777	1,538,201	1,108,898	1,401,931	26.4%
F. Archaeological sites	3,001,561	2,643,445	1,901,279	2,284,156	20.1%
IV. RECEIPTS (euros)					
	2014	2015	JANUARY- AUGUST		change
			2015	2016	2016/2015
Total Receipts (G+H)	54,663,545,00	56,224,962,00	39,606,030,00	59,099,113,00	49.2%
G. Museums	11,793,726,00	12,385,213,00	8,709,593,00	9,112,483,00	4.6%
H. Archaeological sites	42,869,819,00	43,839,749,00	30,896,437,00	49,986,630,00	61.8%

⁽¹⁾ Flat rate ticket. valid both for the museum and the Archaeological site.

EXPLANATORY NOTES

Museums and Archaeological Sites Survey	The Survey on Museums and Archaeological Sites Attendance has been producing results since 1970. on the basis of data collected by the Archaeological Receipts Fund (ARF) of the Ministry of Culture and Sports. The ARF collects data on the number of visitors and the receipts from the tickets sold in the Museums and Archaeological sites of the country. The corresponding data for the Acropolis Museum are available from December 2009 onwards.
Legal Framework	The present survey is continuously conducted since 1970 on a regular basis and it produces results on a monthly and yearly basis in compliance with the Joint Ministerial Decision 15189/B379/73. ELSTAT tabulates the data on Museums and the Archaeological sites for the whole of the Country.
Reference Period	1/8/2016 to 31/8/2016
Information on tickets	<p>From January 2002 onwards. the number of Museums' visitors includes both the visitors who have bought a ticket and the visitors with free admission. From 16-06-1996 onwards. the Museums and the Archaeological sites all over Greece have a paid admission for all the visitors. Greeks and foreigners. all over the year. except in the following days. which are free admission days:</p> <ol style="list-style-type: none"> 1. National Holidays (25th of March and 28th of October) 2. The first Sunday every month during the five month period from 1 November to 31 March 3. The 6th of March (in memory of Melina Merkouri) 4. The 18th of April (International Monuments Day) 5. The 18th of May (International Museums Day) 6. The 5th of June (International Environment Day) 7. The last weekend of September annually (European Heritage Days)
Free admissions	<p>The admission is free for:</p> <ol style="list-style-type: none"> 1. Young people from EU-countries aged under 18 years. by showing their identity card 2. Students of Universities and of Higher and Technical Education Institutions or equivalent institutions of EU-countries. as well as of Tour Guide Training Institutes. with current student identification card or International Student Identity Card (ISIC) Student Identity Card (ISIC) 3. Employees of the Hellenic Ministry of Culture and Sports by showing their professional identity card 4. ICOM and ICOMOS cardholders 5. Tour Guides with their current working identification card from the Ministry of Development 6. Teachers accompanying pupils and students on primary. secondary and tertiary education institution tours 7. Journalists with current journalists' identification card 8. Members of Associations and Societies of Friends of Museums and Archaeological Sites 9. Official guests of the Greek Government. after relevant approval 10. Escorts of blind persons and persons with disabilities 11. Free admission cardholders 12. Holders of the Culture Card
Number of flat rate tickets	From April 1999 onwards. in some Museums and the nearby Archaeological site. in addition to the ordinary ticket. a new "flat rate ticket" was established. which is valid for both museum and the nearby Archaeological site. The total number of these flat rate tickets for August 2016 was 102.228 .
References	More information on the Museums and Archaeological Sites Survey and detailed time series are available on: http://www.statistics.gr/en/statistics/-/publication/SCI21/-