



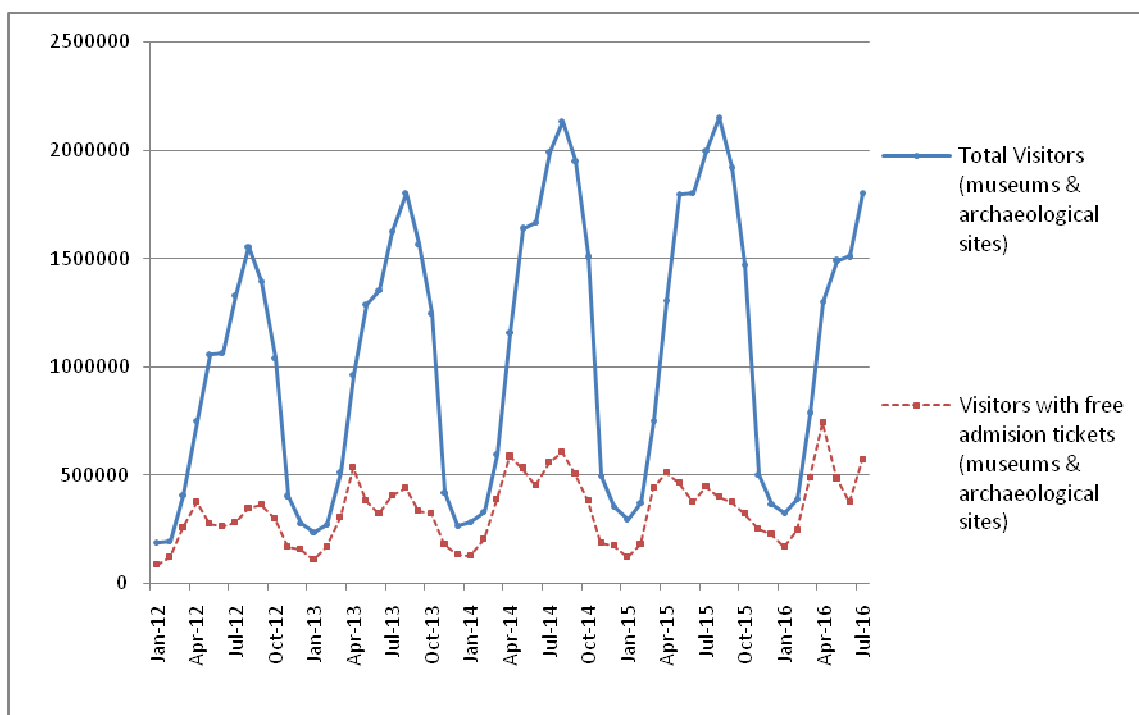
PRESS RELEASE

MUSEUMS AND ARCHAEOLOGICAL SITES ATTENDANCE SURVEY JULY 2016

The Hellenic Statistical Authority (ELSTAT) announces the results of the Survey on Museums and Archaeological Sites Attendance for July 2016. In particular:

- During July 2016, **Museums** experienced a 3% increase in the number of visitors and a 66.1% increase in the number of free admission visitors. An increase of 11.9% was recorded in their receipts, in comparison with the corresponding month of 2015 (Table 1).
- The number of **visitors at Archaeological sites**, in July 2016, recorded a decrease of 14.1% and 13.7% decrease was observed in the number of free admission visitors. An increase of 67.2% was recorded in their receipts in comparison with the corresponding month of 2015 (Table 1).
- During the seven month period from January to July 2016, there was a 2.1% decrease in the number of visitors of Museums and an increase of 23% in the number of free admission visitors. The corresponding receipts increased by 2.3% in comparison with the corresponding period of 2015 (Table 2).
- As regards Archaeological sites, during the seven month period from January to July of 2016 a decrease of 11.4% was recorded in the number of visitors and a 14.3% increase was observed in the number of free admission visitors. The corresponding receipts increased by 57.5%, in comparison with the corresponding period of 2015 (Table 2).

Graph 1: Visitors of Museums and Archaeological sites (Jan 2012 – Jul 2016)



Information:

Social Statistics Division

Section of Culture and Sports statistics.

Argyro Pateraki (Tel: +30 213 1352129, e-mail: ar.pateraki@statistics.gr)

**TABLE 1: VISITORS OF MUSEUMS AND ARCHAEOLOGICAL SITES - TOTAL RECEIPTS
(JULY 2015 & JULY 2016)**

I. VISITORS			
Museums and Archaeological sites	2015	2016	Change 2016/2015
Total number of visitors (A+B)	1,996,020	1,798,830	-9.9%
A. Museums (C+E)	495,733	510,555	3.0%
Acropolis Museum	170,266	160,986	-5.5%
National Archaeological	52,052	48,125	-7.5%
Ancient Olympia	13,799	13,618	-1.3%
Palace of the Grand Master (Rhodes)	45,386	43,058	-5.1%
Herakleion Archaeological (Crete)	29,329	62,035	111.5%
Rhodes	16,342	11,938	-26.9%
Delphi	22,105	17,405	-21.3%
Other Museums	146,454	153,390	4.7%
B. Archaeological Sites (D+F)	1,500,287	1,288,275	-14.1%
Epidavros ⁽¹⁾	55,446	46,043	-17.0%
The Acropolis of Mycenae & Atreus' Treasure	46,445	37,818	-18.6%
The Acropolis of Athens	293,905	228,391	-22.3%
Sounio	27,285	26,213	-3.9%
The Acropolis of Lindos	115,259	80,560	-30.1%
Kameiros (Rhodes)	25,877	17,310	-33.1%
Ancient Olympia	60,529	58,835	-2.8%
Knossos (Crete)	103,913	110,851	6.7%
Phaistos (Crete)	14,176	11,487	-19.0%
Ancient Korinthos ⁽¹⁾	18,940	15,440	-18.5%
Mystras ⁽¹⁾	14,917	14,091	-5.5%
Delphi	39,262	31,934	-18.7%
Other Archaeological sites	684,333	609,302	-11.0%
II. VISITORS WHO PAID TICKET			
	2015	2016	Change 2016/2015
Total number of visitors who paid ticket (C+D)	1,549,623	1,230,665	-20.6%
C. Museums	380,071	318,483	-16.2%
D. Archaeological sites	1,169,552	912,182	-22.0%
III. VISITORS WITH FREE ADMISSION TICKETS			
	2015	2016	Change 2016/2015
Total number of visitors with free admission ticket (E+F)	446,397	568,165	27.3%
E. Museums	115,662	192,072	66.1%
F. Archaeological sites	330,735	376,093	13.7%
IV. RECEIPTS (euros)			
	2015	2016	Change 2016/2015
Total Receipts (G+H)	8,434,099.00	13,134,067.00	55.7%
G. Museums	1,746,855.00	1,954,627.00	11.9%
H. Archaeological sites	6,687,244.00	11,179,440.00	67.2%

⁽¹⁾ Flat rate ticket, valid both for the museum and the Archaeological site.

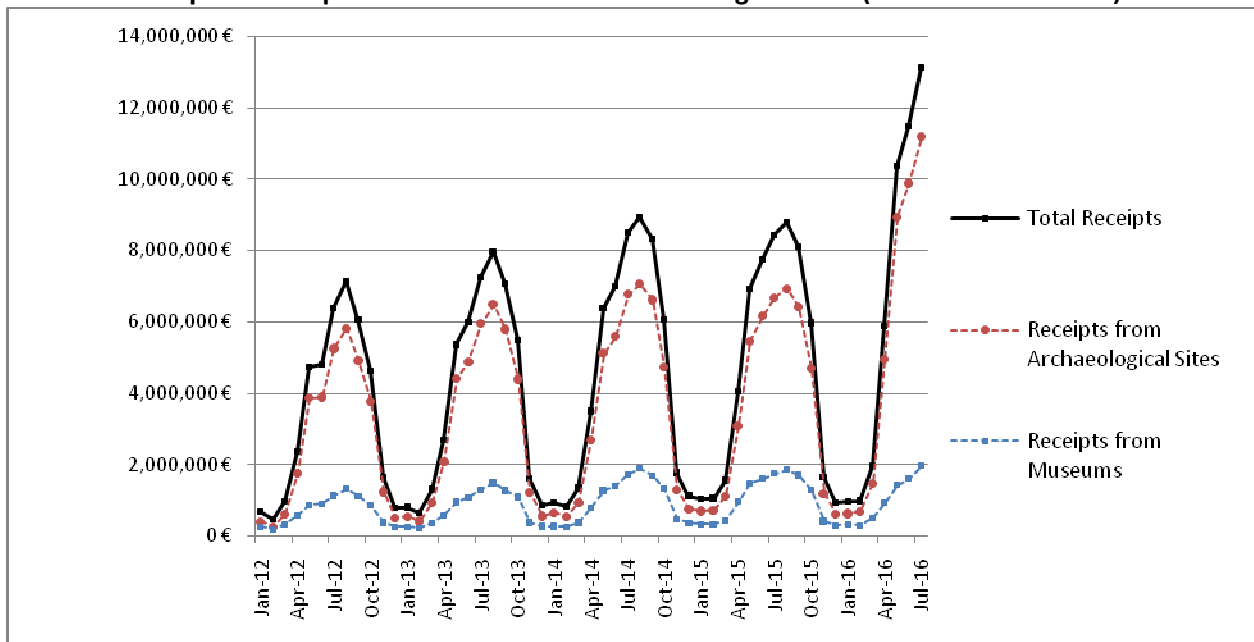
**TABLE 2: VISITORS OF MUSEUMS AND ARCHAEOLOGICAL SITES - TOTAL RECEIPTS
(2014,2015, AND JANUARY- JULY 2015 & 2016)**

I. VISITORS					
Museums and Archaeological sites	2014	2015	JANUARY- JULY		change
			2015	2016	2016/2015
Total number of visitors (A+B)	14,107,303	14,725,895	8,313,797	7,602,176	-8.6%
A. Museums (C+E)	4,154,142	4,405,842	2,527,185	2,474,683	-2.1%
Acropolis Museum	1,377,409	1,510,615	881,484	788,529	-10.5%
National Archaeological	459,115	476,754	283,366	254,744	-10.1%
Ancient Olympia	134,976	135,972	85,001	76,166	-10.4%
Palace of the Grand Master (Rhodes)	258,906	251,091	130,362	112,844	-13.4%
Herakleion Archaeological (Crete)	198,942	201,657	97,115	203,482	109.5%
Rhodes	79,878	87,824	44,149	33,349	-24.5%
Delphi	190,314	205,369	131,503	101,054	-23.2%
Other Museums	1,454,602	1,536,560	874,205	904,515	3.5%
B. Archaeological Sites (D+F)	9,953,161	10,320,053	5,786,612	5,127,493	-11.4%
Epidavros ⁽¹⁾	416,323	443,565	279,706	218,676	-21.8%
The Acropolis of Mycenae & Atreus' Treasure	377,336	402,565	255,561	205,482	-19.6%
The Acropolis of Athens	1,563,434	2,043,868	1,173,277	1,029,164	-12.3%
Sounio	203,269	236,285	146,893	129,917	-11.6%
The Acropolis of Lindos	630,042	580,875	300,683	202,814	-32.5%
Kameiros (Rhodes)	177,859	152,204	83,873	57,725	-31.2%
Ancient Olympia	464,990	439,836	236,450	227,403	-3.8%
Knossos (Crete)	670,499	632,288	323,060	319,013	-1.3%
Phaistos (Crete)	105,643	94,689	51,008	38,210	-25.1%
Ancient Korinthos ⁽¹⁾	161,819	141,490	86,536	87,767	1.4%
Mystras ⁽¹⁾	113,815	117,010	68,469	64,905	-5.2%
Delphi	293,944	319,754	202,896	167,399	-17.5%
Other Archaeological sites	4,774,188	4,715,624	2,578,200	2,379,018	-7.7%
II. VISITORS WHO PAID TICKET					
	2014	2015	JANUARY- JULY		change
			2015	2016	2016/2015
Total number of visitors who paid ticket (C+D)	9,389,965	10,544,249	5,700,479	4,529,497	-20.5%
C. Museums	2,438,365	2,867,641	1,548,959	1,271,110	-17.9%
D. Archaeological sites	6,951,600	7,676,608	4,151,520	3,258,387	-21.5%
III. VISITORS WITH FREE ADMISSION TICKETS					
	2014	2015	JANUARY- JULY		change
			2015	2016	2016/2015
Total number of visitors with free admission ticket (E+F)	4,717,338	4,181,646	2,613,318	3,072,679	17.6%
E. Museums	1,715,777	1,538,201	978,226	1,203,573	23.0%
F. Archaeological sites	3,001,561	2,643,445	1,635,092	1,869,106	14.3%
IV. RECEIPTS (euros)					
	2014	2015	JANUARY- JULY		change
			2015	2016	2016/2015
Total Receipts (G+H)	54,663,545.00	56,224,962.00	30,821,595.00	44,765,937.00	45.2%
G. Museums	11,793,726.00	12,385,213.00	6,857,834.00	7,013,142.00	2.3%
H. Archaeological sites	42,869,819.00	43,839,749.00	23,963,761.00	37,752,795.00	57.5%

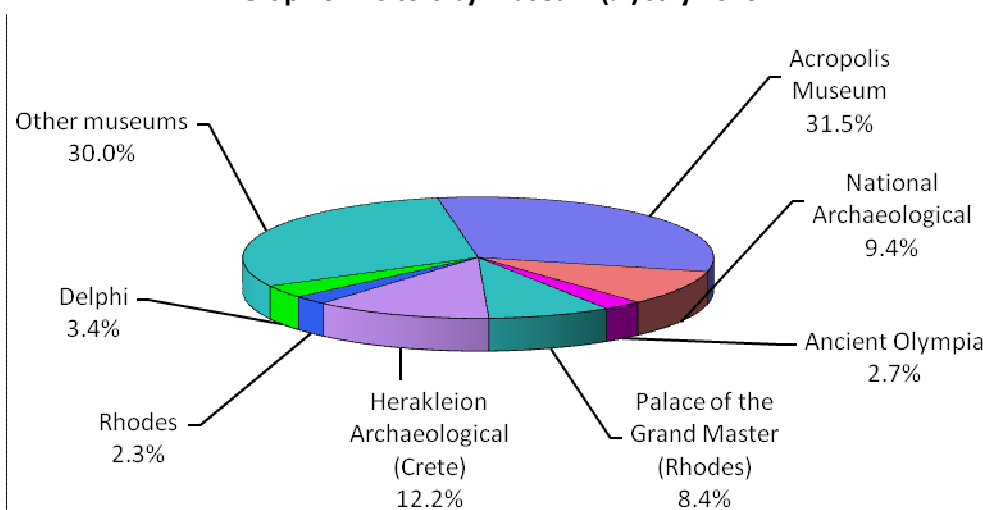
⁽¹⁾ Flat rate ticket, valid both for the museum and the Archaeological site.

In the following graphs we can observe the evolution of the Receipts (Graph 2) so as the visitors by Museum and Archaeological Site (Graphs 3 and 4 respectively).

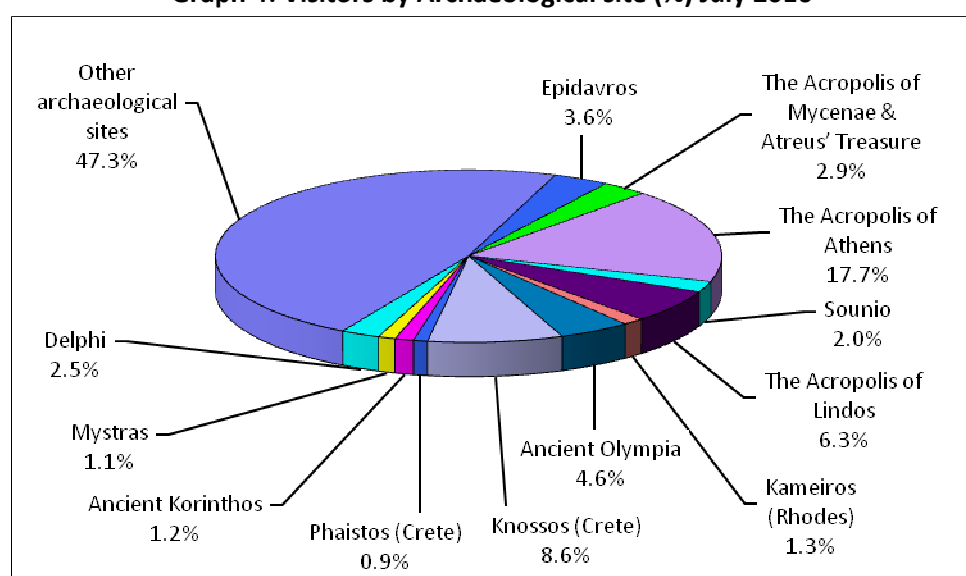
Graph 2: Receipts from Museums and Archaeological Sites (JAN 2012 - JUL 2016)



Graph 3: Visitors by Museum (%) July 2016



Graph 4: Visitors by Archaeological site (%) July 2016



EXPLANATORY NOTES

Museums and Archaeological Sites Survey	The Survey on Museums and Archaeological Sites Attendance has been producing results since 1970, on the basis of data collected by the Archaeological Receipts Fund (ARF) of the Ministry of Culture and Sports. The ARF collects data on the number of visitors and the receipts from the tickets sold in the Museums and Archaeological sites of the country. The corresponding data for the Acropolis Museum are available from December 2009 onwards.
Legal Framework	The present survey is continuously conducted since 1970 on a regular basis and it produces results on a monthly and yearly basis in compliance with the Joint Ministerial Decision 15189/B379/73. ELSTAT tabulates the data on Museums and the Archaeological sites for the whole of the Country.
Reference Period	1/7/2016 to 31/7/2016
Information on tickets	<p>From January 2002 onwards, the number of Museums' visitors includes both the visitors who have bought a ticket and the visitors with free admission. From 16-06-1996 onwards, the Museums and the Archaeological sites all over Greece have a paid admission for all the visitors, Greeks and foreigners, all over the year, except in the following days, which are free admission days:</p> <ol style="list-style-type: none"> 1. National Holidays (25th of March and 28th of October) 2. The first Sunday every month during the five month period from 1 November to 31 March 3. The 6th of March (in memory of Melina Merkouri) 4. The 18th of April (International Monuments Day) 5. The 18th of May (International Museums Day) 6. The 5th of June (International Environment Day) 7. The last weekend of September annually (European Heritage Days)
Free admissions	<p>The admission is free for:</p> <ol style="list-style-type: none"> 1. Young people from EU-countries aged under 18 years, by showing their identity card 2. Students of Universities and of Higher and Technical Education Institutions or equivalent institutions of EU-countries, as well as of Tour Guide Training Institutes, with current student identification card or International Student Identity Card (ISIC) 3. Employees of the Hellenic Ministry of Culture and Sports by showing their professional identity card 4. ICOM and ICOMOS cardholders 5. Tour Guides with their current working identification card from the Ministry of Development 6. Teachers accompanying pupils and students on primary, secondary and tertiary education institution tours 7. Journalists with current journalists' identification card 8. Members of Associations and Societies of Friends of Museums and Archaeological Sites 9. Official guests of the Greek Government, after relevant approval 10. Escorts of blind persons and persons with disabilities 11. Free admission cardholders 12. Holders of the Culture Card
Number of flat rate tickets	From April 1999 onwards, in some Museums and the nearby Archaeological site, in addition to the ordinary ticket, a new "flat rate ticket" was established, which is valid for both museum and the nearby Archaeological site. The total number of these flat rate tickets for July 2016 was 93,323 .
References	More information on the Museums and Archaeological Sites Survey and detailed time series are available on: http://www.statistics.gr/en/statistics/-/publication/SCI21/-