

LIVING ARRANGEMENTS AND CONDITIONS OF CHILDREN IN SEPERATED AND BLENDED FAMILIES, 2021

CHILDREN* AGED UNDER 18

LIVING (%):

94.2

WITH BOTH PARENTS

0.9

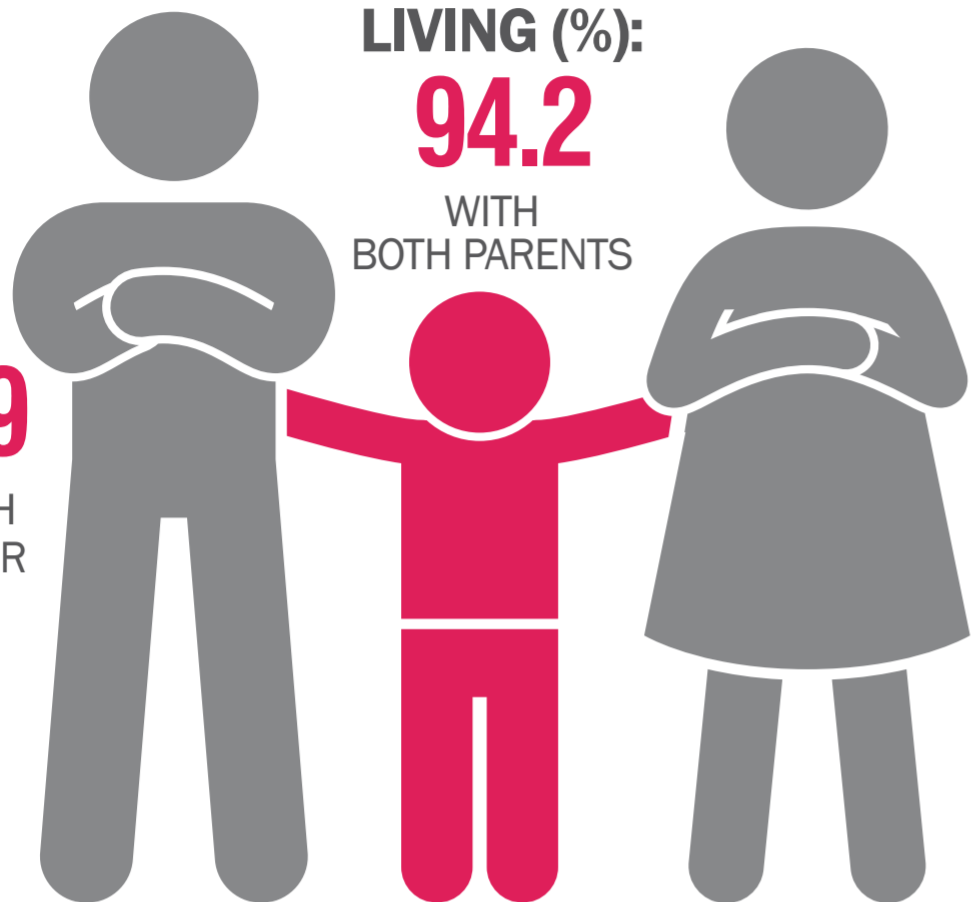
WITH FATHER

4.7

WITH MOTHER

0.2

WITHOUT PARENTS



* Total of children living in separated and non-separated families

NUMBER OF CHILDREN WHO ARE MEMBERS OF THE HOUSEHOLD AND WHOSE ONE PARENT LIVES IN ANOTHER HOUSEHOLD (%)



52.5

1 CHILD



37.5

2 CHILDREN



8.3

3 CHILDREN



1.6

4 CHILDREN

Frequency of contact with the child who is not a household member (%)

(via phone, social media, etc.)

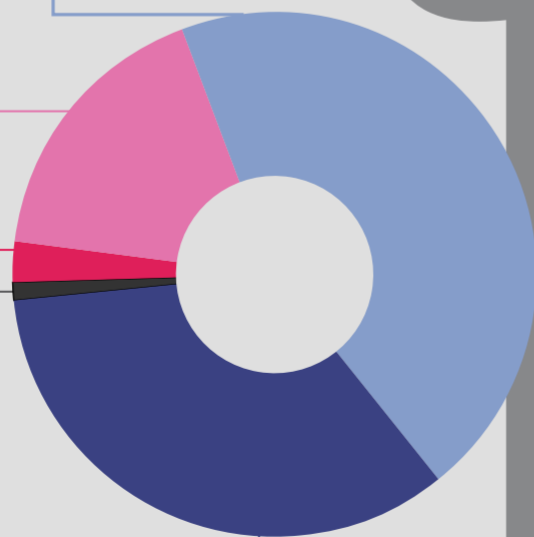
44.9 EVERY WEEK (not every day)

17.2 SEVERAL TIMES A MONTH (not every week)

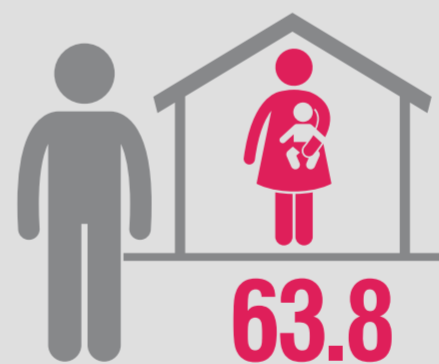
2.6 LESS THAN ONCE A MONTH

0.9 NEVER

34.3 DAILY

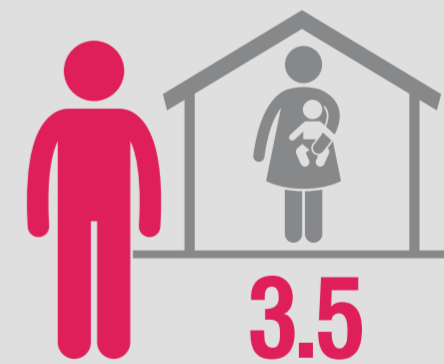


LEGAL CUSTODY SITUATION OF THE CHILD (%)



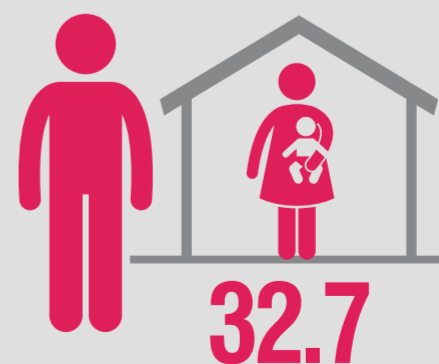
63.8

EXCLUSIVELY THE PARENT WHO IS A HOUSEHOLD MEMBER



3.5

EXCLUSIVELY THE PARENT WHO IS NOT A HOUSEHOLD MEMBER



32.7

BOTH PARENTS TOGETHER