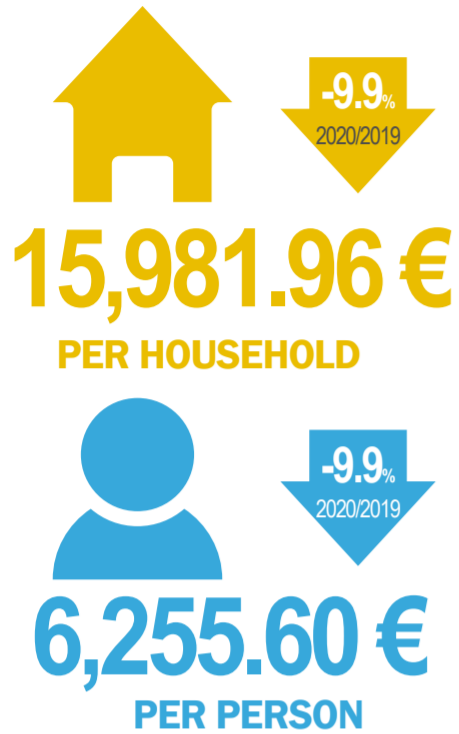
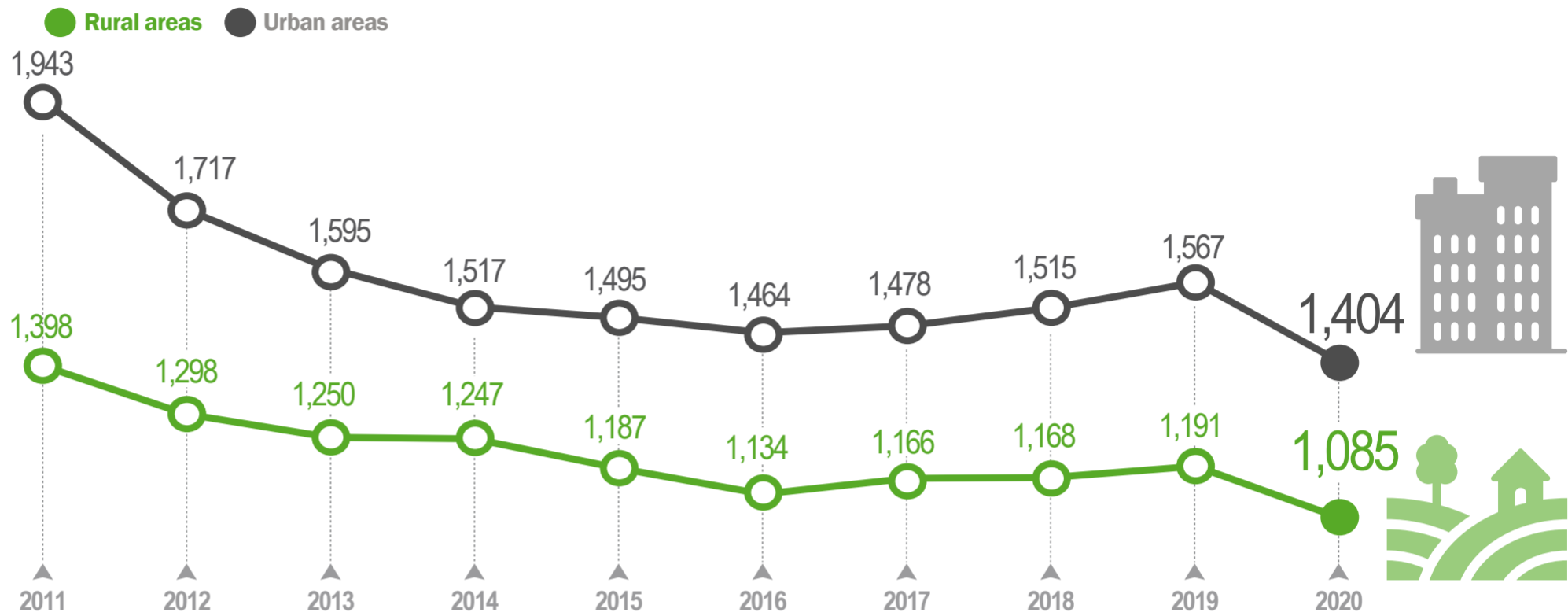


# HOUSEHOLD BUDGET SURVEY, 2020

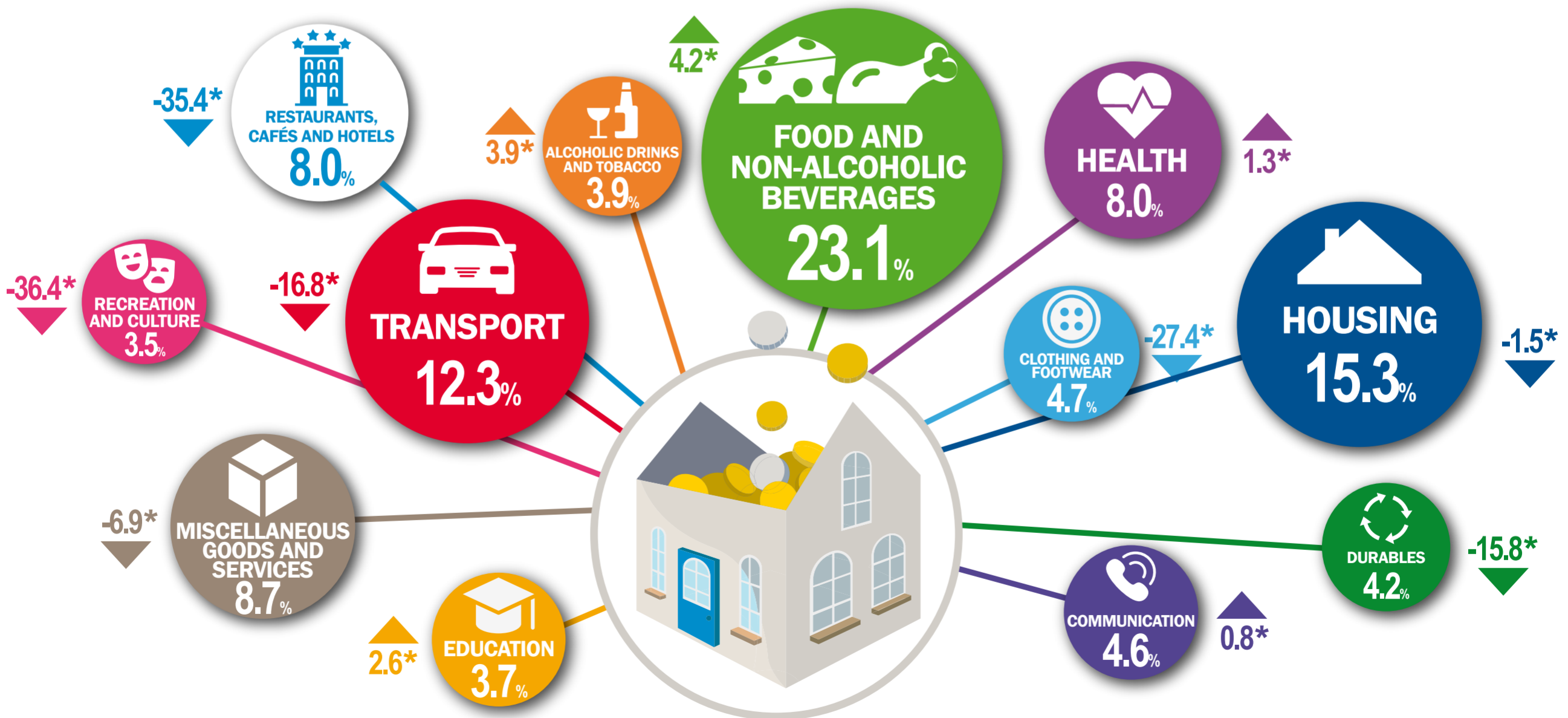
## AVERAGE YEARLY EXPENDITURE (current prices in euro)



## AVERAGE MONTHLY EXPENDITURE OF HOUSEHOLDS (current prices in euro)



## DISTRIBUTION OF MONTHLY EXPENDITURE ON GOODS AND SERVICES



\* Change (%) of value in current prices in euro, 2020/2019