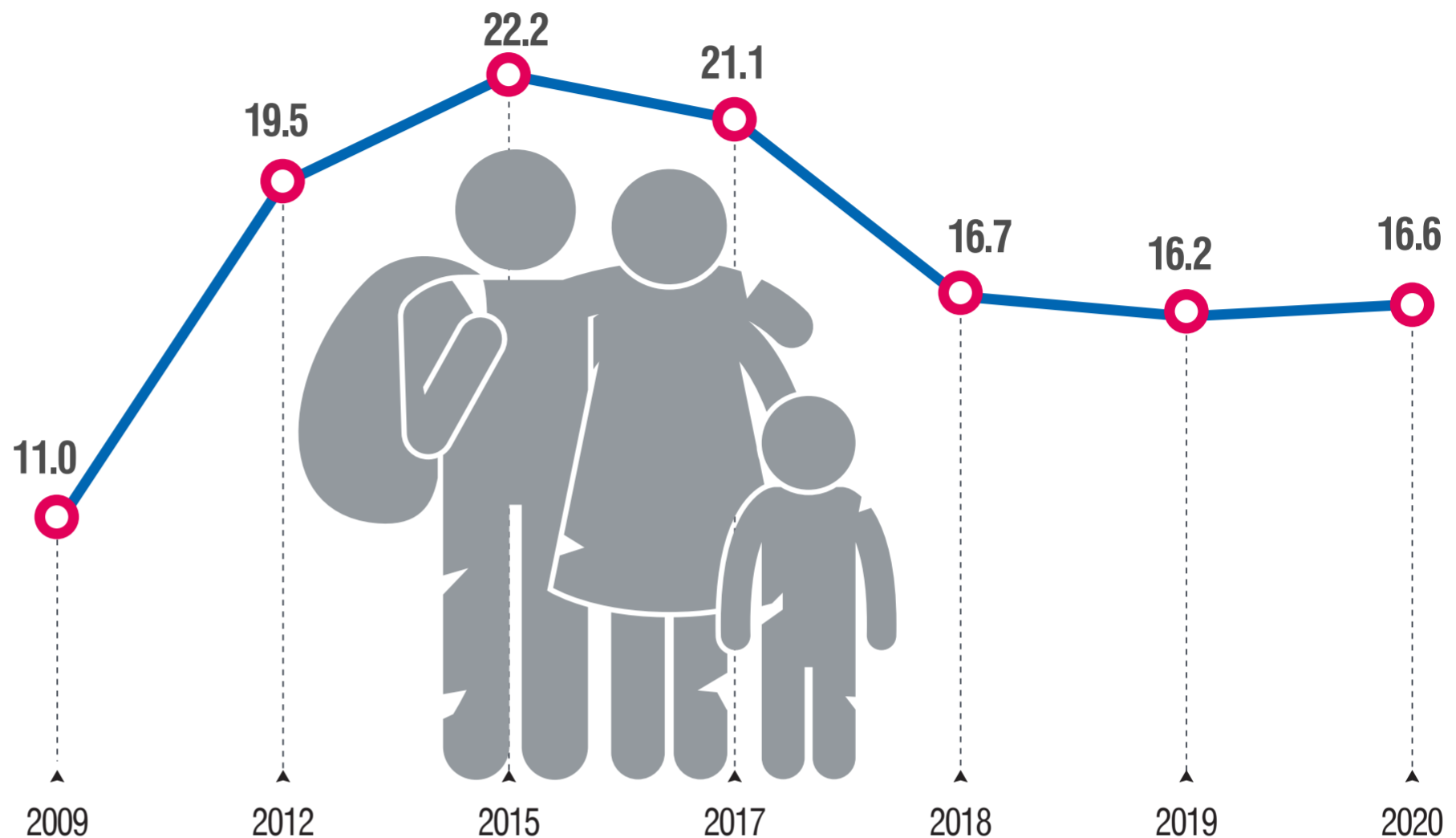
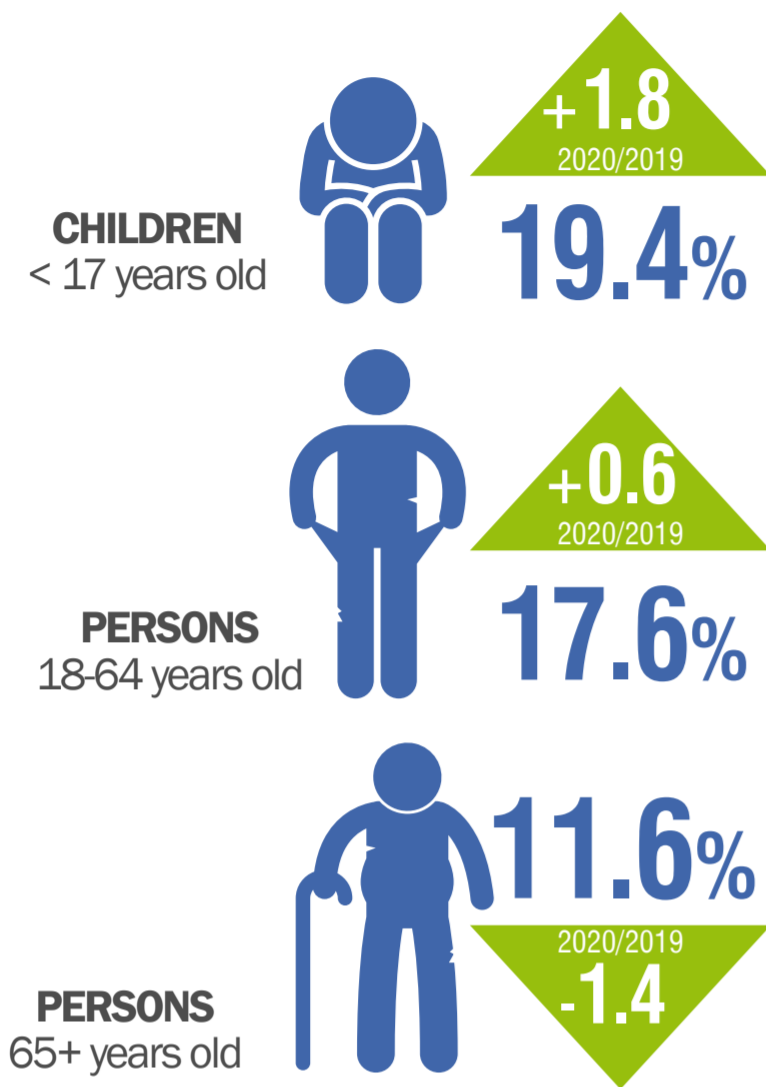


# MATERIAL DEPRIVATION, 2020

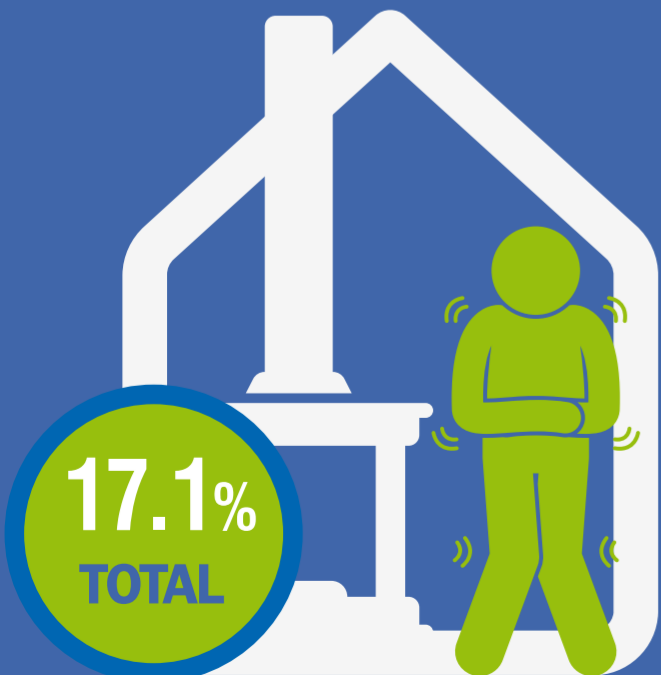
(income reference year 2019)

## POPULATION IN MATERIAL DEPRIVATION



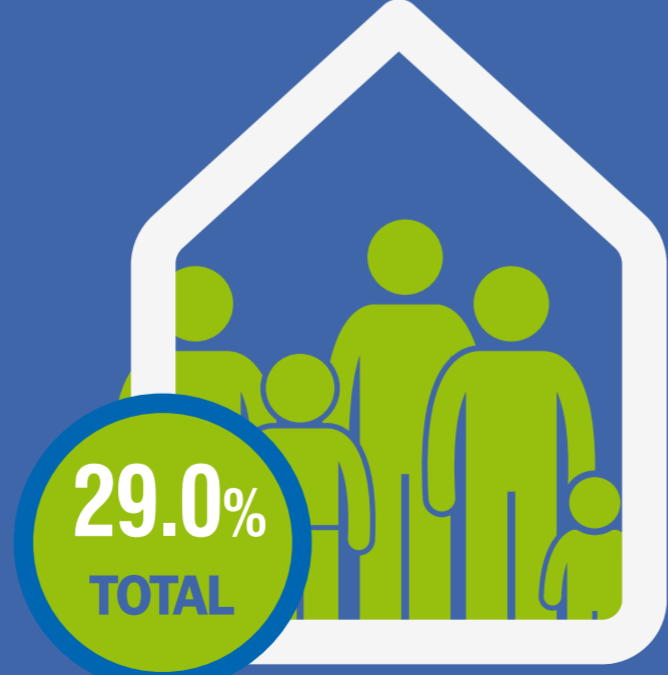
### INABILITY TO KEEP HOME ADEQUATELY WARM

**39.1%** POOR HOUSEHOLDS  
**12.4%** NON-POOR HOUSEHOLDS



### LIVE IN OVERCROWDED HOUSEHOLDS

**43.9%** POOR HOUSEHOLDS  
**25.8%** NON-POOR HOUSEHOLDS



### INABILITY TO FULFILL BASIC NEEDS (%)

● TOTAL ● NON-POOR HOUSEHOLDS ● POOR HOUSEHOLDS

