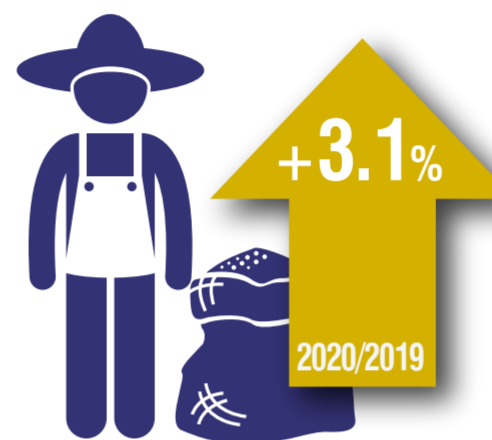


# EVOLUTION OF TURNOVER OF ENTERPRISES, 2020

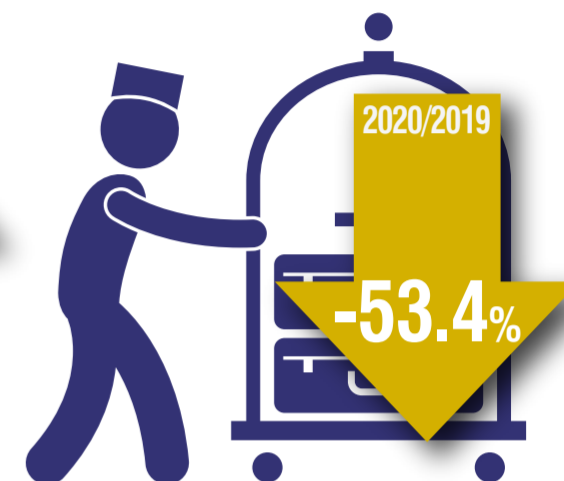
## TURNOVER FOR THE TOTAL OF ENTERPRISES



## SECTIONS WITH THE BIGGEST CHANGES IN TURNOVER



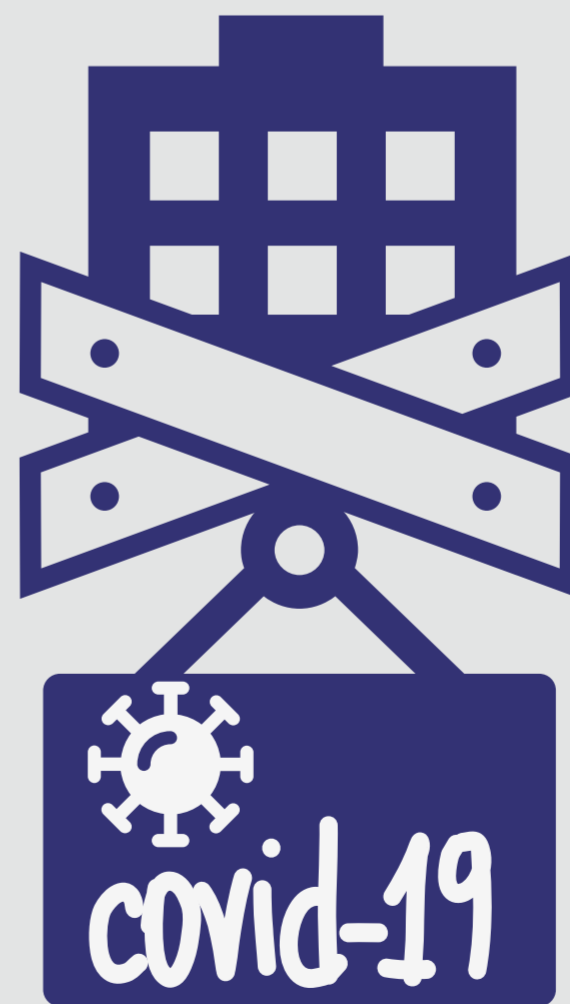
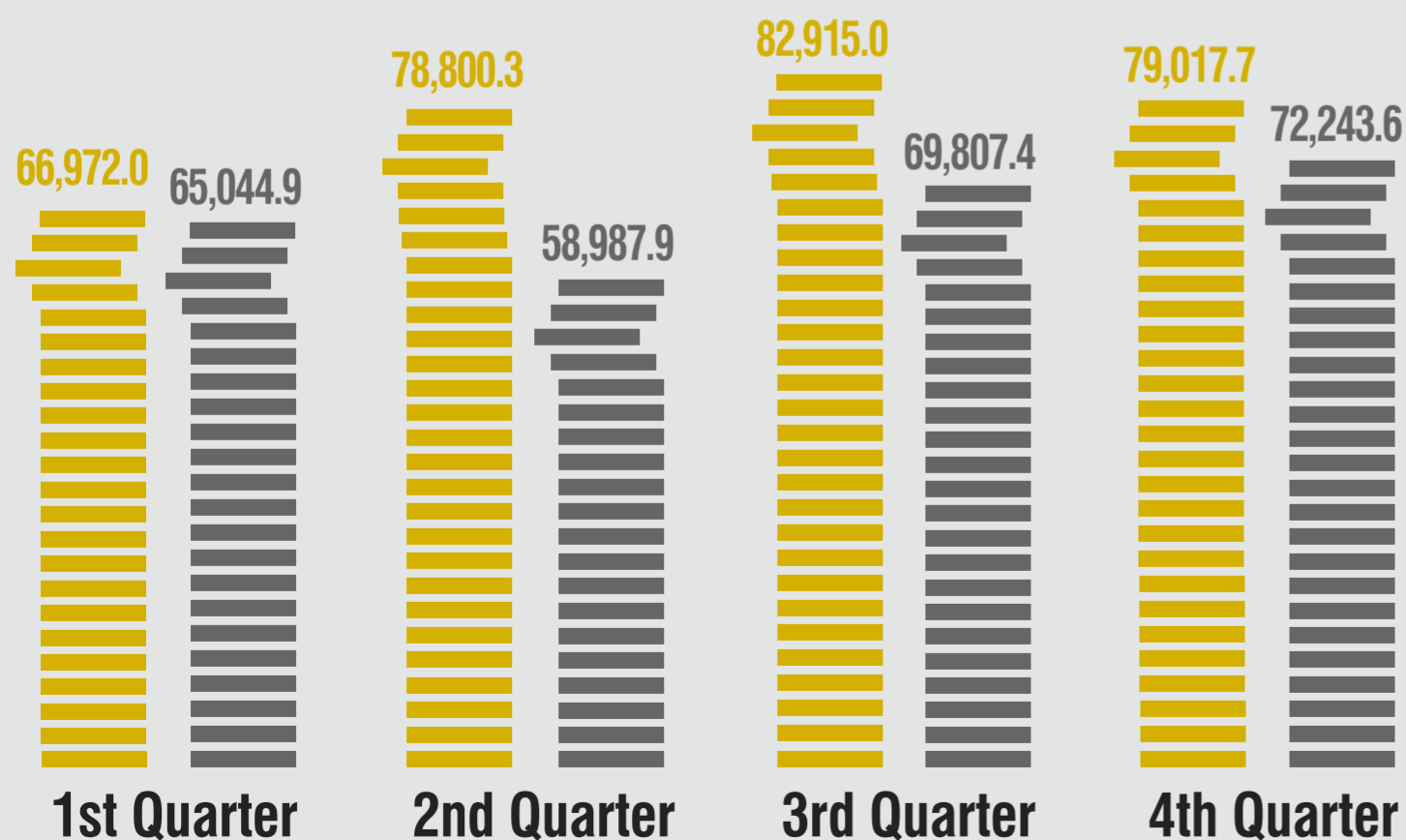
AGRICULTURE, FORESTRY AND FISHING



ACCOMMODATION AND FOOD SERVICE ACTIVITIES

## TURNOVER FOR THE TOTAL OF ENTERPRISES (in million euro)

€ 2019    € 2020



UNDER SUSPENSION OF OPERATION IN MARCH 2020

ENTERPRISES  
**205,984**

TURNOVER  
**18,789.8**  
million euro

