



## ARRIVALS AND NIGHTS SPENT IN HOTELS, SIMILAR ESTABLISHMENTS, TOURIST CAMPSITES AND SHORT-STAY ACCOMMODATION ESTABLISHMENTS Year 2024 (final data)

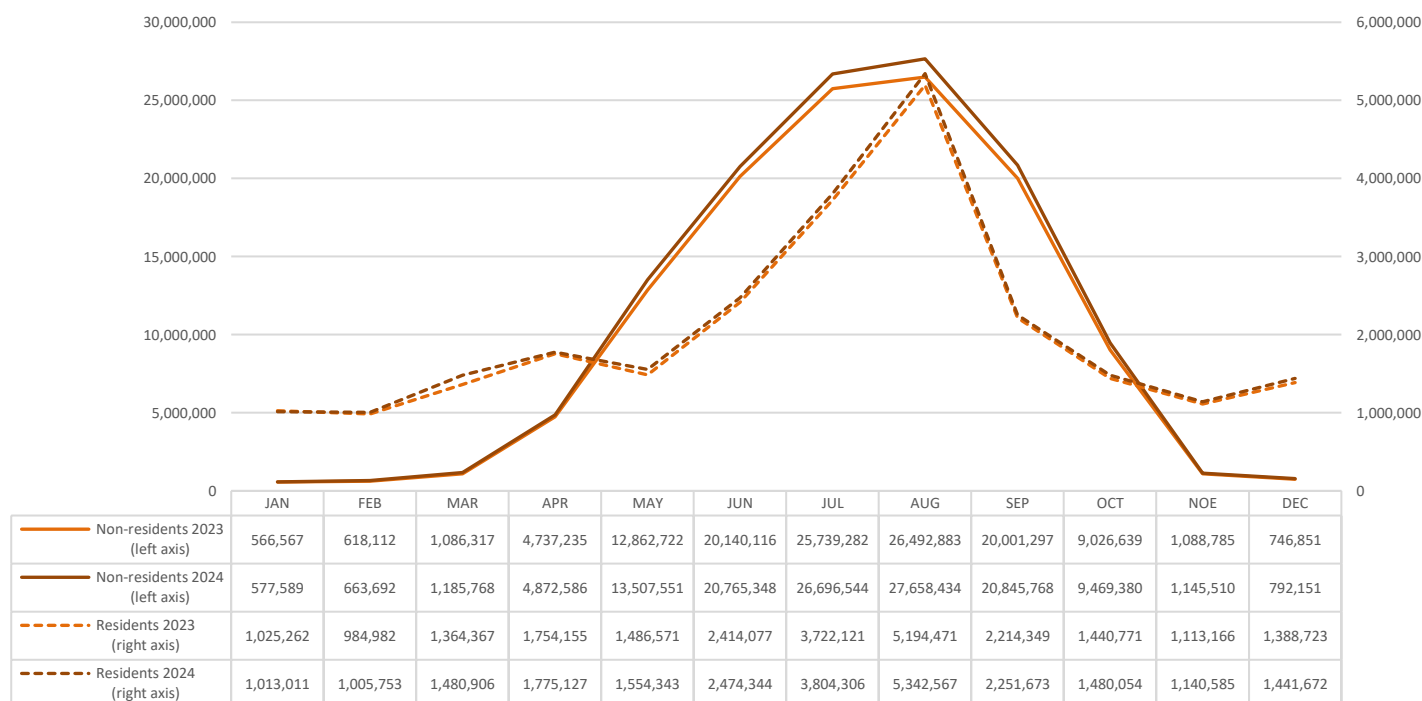
The Hellenic Statistical Authority (ELSTAT) announces the data of the survey on Arrivals and Nights Spent in hotels, similar establishments, tourist campsites and short-stay accommodation establishments for the reference year 2024.

According to the survey, for the total of these establishments, in 2024 compared with 2023, an increase is recorded both in arrivals, by 3.8%, (Tables 1 and 3) and in nights spent, by 3.9% (Tables 2 and 4).

More specifically, in 2024 compared with 2023, an increase of 4.2% and 4.1% is recorded in arrivals and nights spent by non-residents, respectively, while arrivals and nights spent by residents recorded an increase of 2.8% and 2.7%, respectively (Graph 1).

The annual occupancy rate of the bed places in hotels and similar establishments (excluding tourist campsites and short stay accommodation establishments) amounted to 50.6% in 2024, compared with 54.7% in 2023 (Graphs 17 and 18). The capacity by category of hotel accommodation establishment is presented in Table 5.

**Graph 1. Evolution of nights spent of residents and non-residents  
in hotels, similar establishments, tourist campsites and short stay accommodation establishments, by month 2023-2024**



**Information on methodological issues:**

Sectoral Statistics Division  
Tourism and Culture Statistics Section  
Head of the Section: Eleni Papadopoulou  
Tel: +30 213 135 2168  
e-mail: [e.papadopoulou@statistics.gr](mailto:e.papadopoulou@statistics.gr)

**Information for data provision:**

Tel. +30 213 135 2022, 2308, 2310  
e-mail: [data.dissem@statistics.gr](mailto:data.dissem@statistics.gr)

During 2024, the largest share of arrivals and nights spent is observed in hotel accommodation establishments (79.4% and 76.4%, respectively) (Graph 3).

According to the monthly distribution of the data, 56.9% of the arrivals and 63.8% of the nights spent, in hotels, similar establishments, tourist campsites and short-stay accommodation establishments of Greece, are recorded during the period of July to October (Tables 1 and 2, Graph 5, 6 and 7).

As regards the breakdown of the survey data by NUTS 2 Region, the most significant increase of arrivals in absolute values, is observed in Notio Aigaio (5.6% in arrivals and 8.2% in nights spent), Kentriki Makedonia (6.0% in arrivals and 5.9% in nights spent), Ionia Nisia (5.6% in arrivals and 3.9% in nights spent), Attiki (3.3% in arrivals and 2.7% in nights spent) and Kriti (1.8% in arrivals and 0.6% in nights spent) (Tables 3 and 4, Graphs 8, 9 and 10).

In 2024, the largest share of arrivals and nights spent in hotels, similar establishments, short-stay accommodation establishments and tourist campsites, is recorded by non-residents, i.e. 73.7% of arrivals and 83.8% of nights spent (Graph 4).

In 2024, the largest share of arrivals and nights spent by non-residents in hotels, similar establishments, short-stay accommodation establishments and tourist campsites is recorded by persons whose country of residence is in Europe (80.4% of arrivals and 89.1% of nights spent) with a significant contribution from the EU Members States (53.7% of arrivals and 59.2% of nights spent) (Tables 6 and 7).

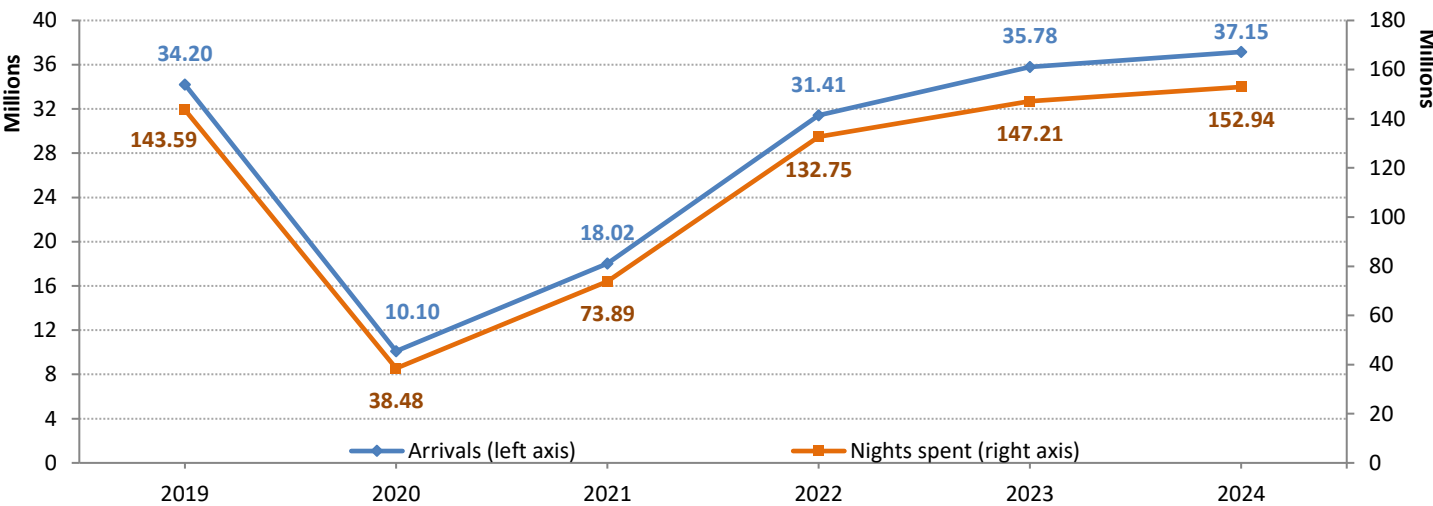
The greatest percentage contribution concerning arrivals for EU Member States is recorded for Germany (12.9% of arrivals and 16.3% of nights spent) and for France (6.6% of arrivals and 5.8% of nights spent). As regards the rest of the European countries, the greatest contribution is recorded for the United Kingdom (16.0% of arrivals and 18.8% of nights spent) (Tables 5 and 6).

When comparing the data of arrivals and nights spent in hotels, similar establishments, short-stay accommodation establishments and tourist campsites by country of residence of the year 2024, with the corresponding data of the year 2023, the most significant increase of arrivals in absolute values among EU Members States, is recorded for Italy (7.2% in arrivals and 10.7% in nights spent), Poland (7.3% in arrivals and 12.6% in nights spent) and Germany (1.8% in arrivals and 0.6% in nights spent) (Tables 5 and 6).

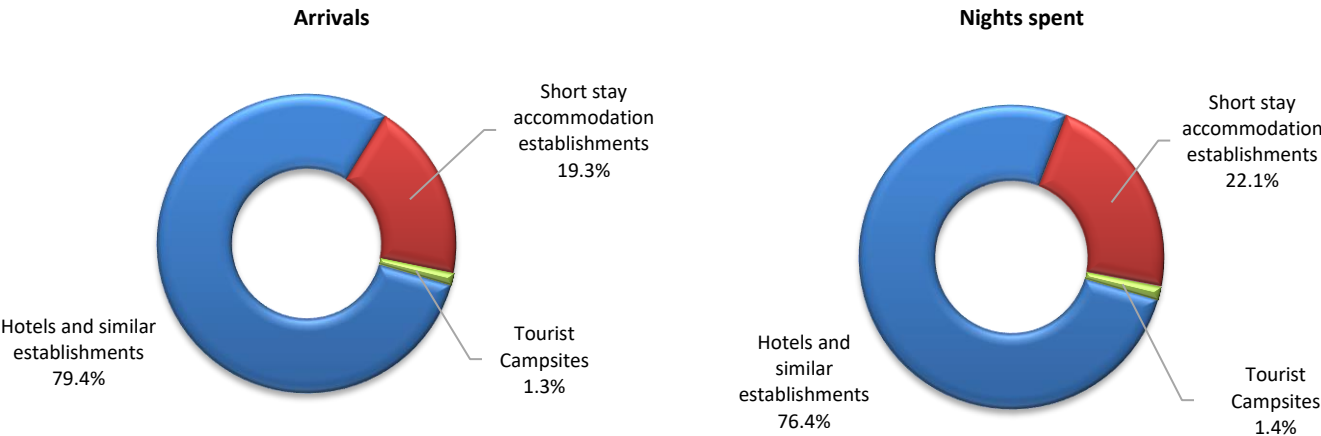
As regards the other European countries an increase of arrivals in absolute values, is recorded for the United Kingdom (7.6% in arrivals and 3.8% in nights spent), Serbia (48.5% in arrivals and 45.1% in nights spent) and Turkey (44.5% in arrivals and 54.9% in nights spent).

From the rest of the continents, a significant increase of arrivals in absolute values, is recorded from Asia, and, in particular, for the People's Republic of China (32.3% in arrivals and 24.0% in nights spent) (Tables 5 and 6).

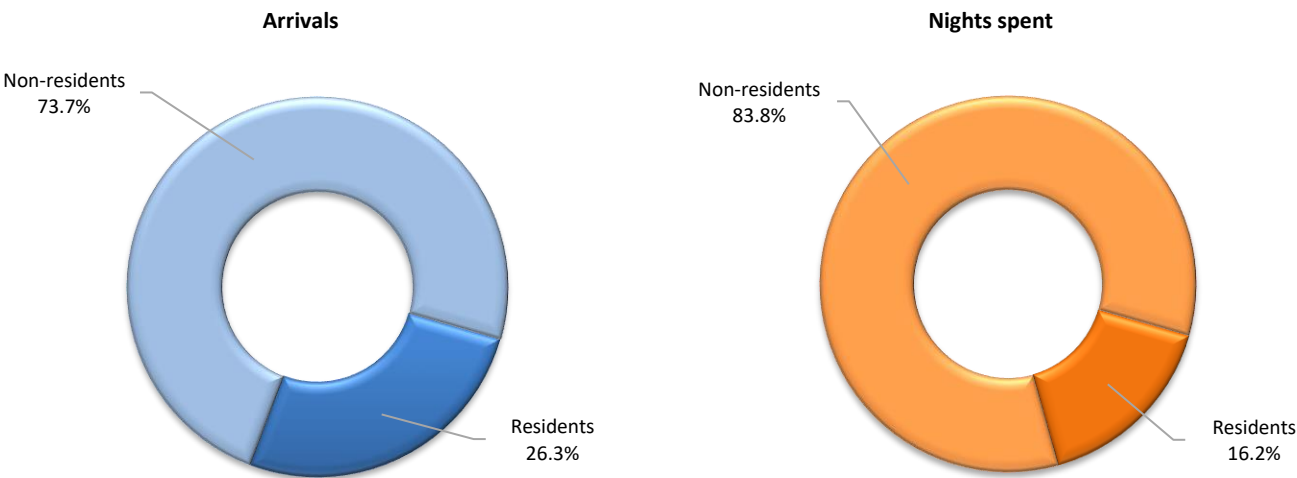
**Graph 2. Evolution of total arrivals and nights spent of residents and non-residents in hotels and similar establishments (NACE Rev.2, 55.1), tourist campsites (NACE Rev.2, 55.3) and short-stay accommodation establishments (NACE Rev.2, 55.2), 2019-2024**



**Graph 3: Percentage (%) distribution of arrivals and nights spent in hotels and similar establishments (NACE Rev.2, 55.1), tourist campsites (NACE Rev.2, 55.3) and short-stay accommodation establishments (NACE Rev.2, 55.2), 2024**



**Graph 4. Arrivals and nights spent of residents and non-residents in hotels and similar establishments (NACE Rev.2, 55.1), tourist campsites (NACE Rev.2, 55.3) and short-stay accommodation establishments (NACE Rev.2, 55.2), 2024**



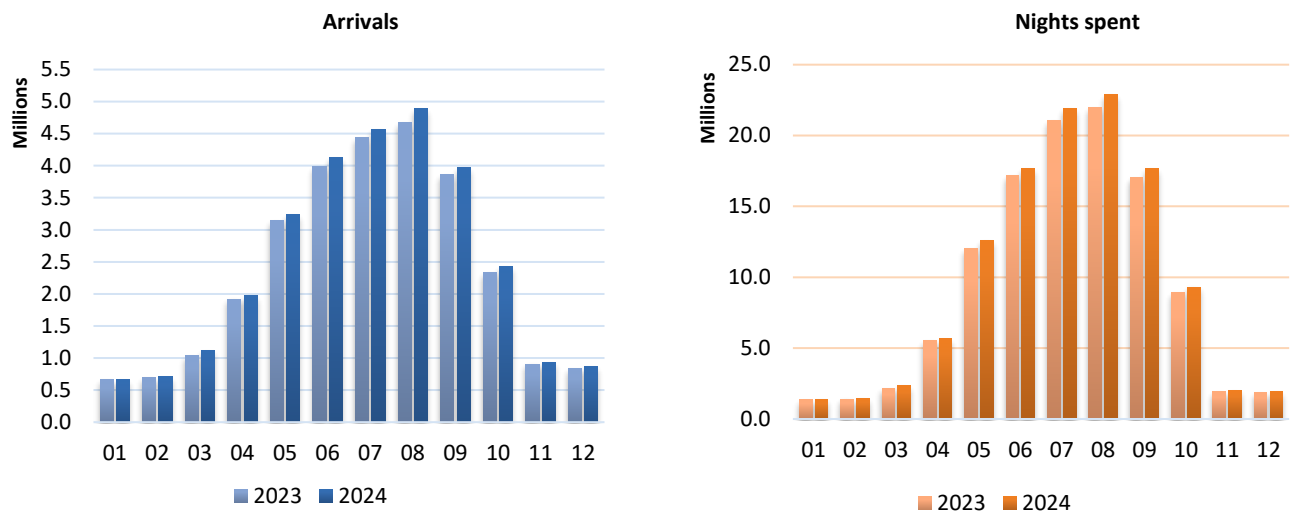
**Table 1. Arrivals of residents and non-residents at hotels, similar establishments, tourist campsites and short-stay accommodation establishments by month, 2023 and 2024**

Month	2023							2024							Change % of total 2024/2023
	Hotels and similar establishments			Tourist Campsites		Short stay accommodation establishments		Hotels and similar establishments			Tourist Campsites		Short stay accommodation establishments		
	Total	Residents	Non residents	Residents	Non residents	Residents	Non residents	Total	Residents	Non residents	Residents	Non residents	Residents	Non residents	
Total	35,782,424	7,701,318	20,788,891	154,074	317,417	1,650,461	5,170,263	37,153,267	7,904,484	21,589,620	158,257	328,467	1,713,887	5,458,552	3.8
January	723,472	441,227	217,856	131	390	50,040	13,828	725,894	432,987	227,037	133	405	50,719	14,613	0.3
February	757,301	449,872	249,472	100	414	43,339	14,104	777,542	454,993	261,066	103	426	45,295	15,659	2.7
March	1,114,884	594,190	443,581	133	742	59,633	16,605	1,202,277	644,321	473,839	134	762	64,329	18,892	7.8
April	2,156,633	701,349	1,218,787	959	9,626	74,687	151,225	2,222,037	709,607	1,263,554	973	9,780	76,461	161,662	3.0
May	3,632,014	603,725	2,536,221	5,400	35,547	70,666	380,455	3,781,852	623,521	2,620,166	5,483	36,689	77,195	418,798	4.1
June	5,132,877	749,218	3,243,038	18,875	47,059	181,040	893,647	5,325,670	767,939	3,365,321	19,717	48,291	185,286	939,116	3.8
July	6,104,604	857,661	3,578,609	48,943	75,835	318,145	1,225,411	6,286,235	877,512	3,683,583	50,423	78,769	325,206	1,270,742	3.0
August	6,706,282	1,013,344	3,661,653	69,205	89,353	499,743	1,372,984	7,023,179	1,043,679	3,842,183	70,824	92,498	521,619	1,452,376	4.7
September	4,891,345	677,818	3,179,260	9,247	48,190	168,106	808,724	5,051,618	693,376	3,280,158	9,363	50,166	176,213	842,342	3.3
October	2,664,617	557,386	1,772,122	786	8,733	72,015	253,575	2,791,216	574,716	1,853,325	799	9,041	72,870	280,465	4.8
November	985,494	487,363	419,591	202	891	50,209	27,238	1,015,253	497,814	434,424	209	961	51,577	30,268	3.0
December	912,901	568,165	268,701	93	637	62,838	12,467	950,494	584,019	284,964	96	679	67,117	13,619	4.1

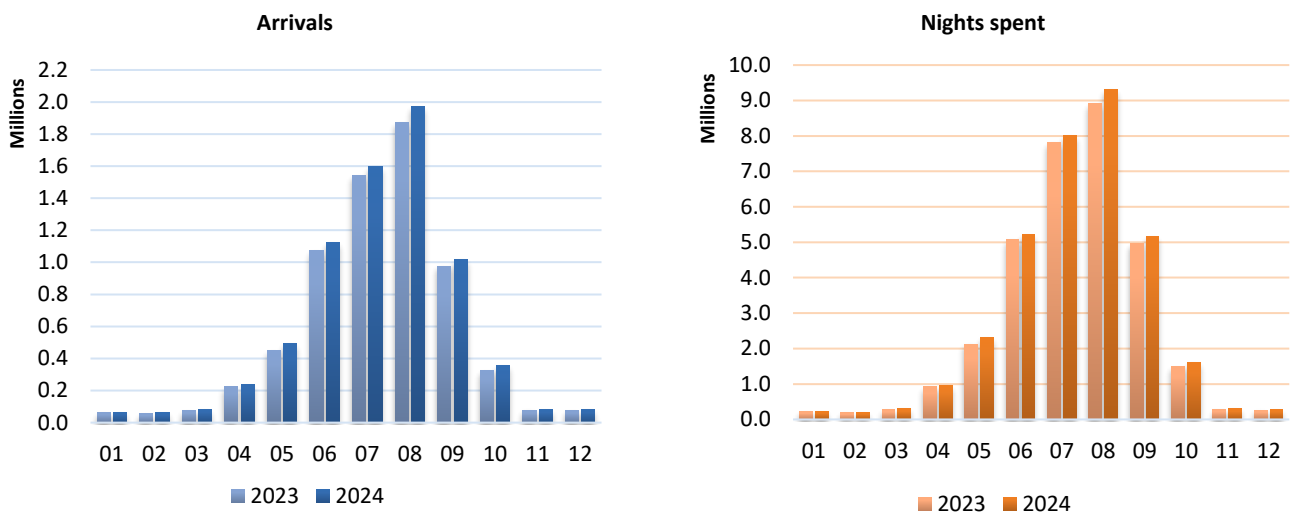
**Table 2. Nights spent of residents and non-residents in hotels, similar establishments, tourist campsites and short-stay accommodation establishments by month, 2023 and 2024**

Month	2023							2024							Change % of total 2024/2023
	Hotels and similar establishments			Tourist Campsites		Short stay accommodation establishments		Hotels and similar establishments			Tourist Campsites		Short stay accommodation establishments		
	Total	Residents	Non residents	Residents	Non residents	Residents	Non residents	Total	Residents	Non residents	Residents	Non residents	Residents	Non residents	
Total	147,209,821	17,351,433	95,146,196	858,933	1,282,168	5,892,649	26,678,442	152,944,662	17,835,010	99,043,390	873,592	1,317,772	6,055,739	27,819,159	3.9
January	1,591,829	853,068	507,293	716	1,568	171,478	57,706	1,590,600	838,872	517,328	746	1,584	173,393	58,677	-0.1
February	1,603,094	835,272	571,967	642	1,079	149,068	45,066	1,669,445	852,934	615,497	667	1,129	152,152	47,066	4.1
March	2,450,684	1,135,668	1,032,657	499	2,272	228,200	51,388	2,666,674	1,235,717	1,126,600	506	2,298	244,683	56,870	8.8
April	6,491,390	1,474,462	4,068,107	3,094	23,137	276,599	645,991	6,647,713	1,496,371	4,177,491	3,037	23,395	275,719	671,700	2.4
May	14,349,293	1,202,191	10,856,486	38,166	125,983	246,214	1,880,253	15,061,894	1,248,305	11,345,038	39,395	128,626	266,643	2,033,887	5.0
June	22,554,193	1,655,751	15,519,357	108,794	202,315	649,532	4,418,444	23,239,692	1,700,900	16,002,781	111,064	206,042	662,380	4,556,525	3.0
July	29,461,403	2,298,588	18,759,432	256,535	324,721	1,166,998	6,655,129	30,500,850	2,360,089	19,529,034	262,717	332,891	1,181,500	6,834,619	3.5
August	31,687,354	3,158,248	18,839,355	376,750	391,566	1,659,473	7,261,962	33,001,001	3,231,108	19,675,098	387,519	403,060	1,723,940	7,580,276	4.1
September	22,215,646	1,524,027	15,485,147	68,383	178,309	621,939	4,337,841	23,097,441	1,549,148	16,130,510	62,364	186,068	640,161	4,529,190	4.0
October	10,467,410	1,133,218	7,807,581	3,876	24,745	303,677	1,194,313	10,949,434	1,170,976	8,137,916	4,028	25,842	305,050	1,305,622	4.6
November	2,201,951	914,353	999,309	1,026	3,518	197,787	85,958	2,286,095	939,980	1,046,036	1,070	3,731	199,535	95,743	3.8
December	2,135,574	1,166,587	699,505	452	2,955	221,684	44,391	2,233,823	1,210,610	740,061	479	3,106	230,583	48,984	4.6

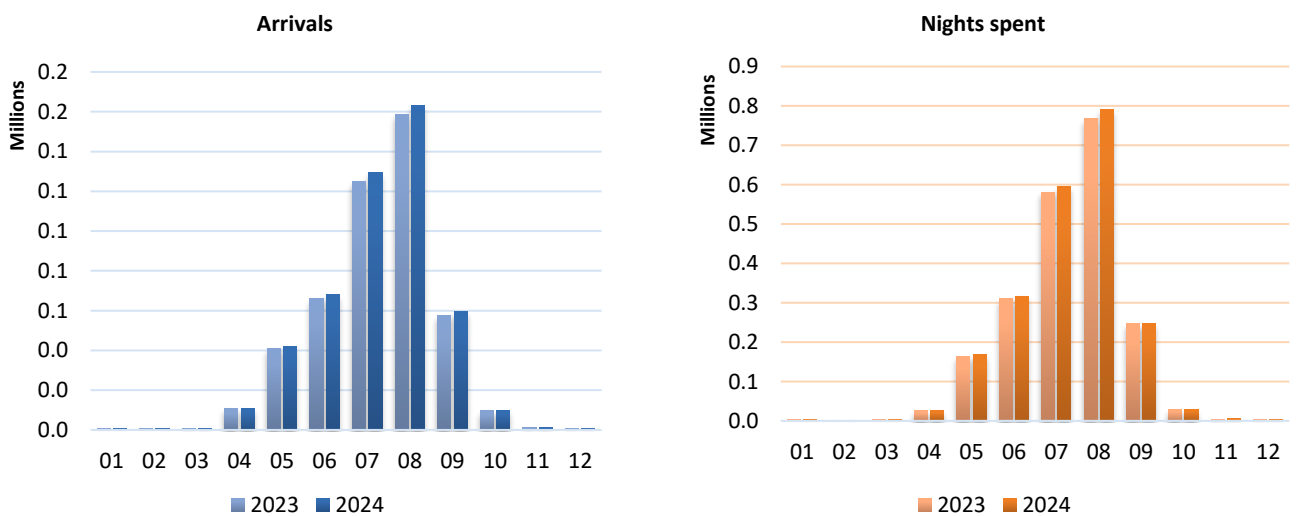
**Graph 5. Arrivals and nights spent in hotels and similar establishments (NACE Rev.2, 55.1) by month, 2023-2024**



**Graph 6. Arrivals and nights spent in short-stay accommodation establishments (NACE Rev.2, 55.2) by month, 2023-2024**



**Graph 7. Arrivals and nights spent in tourist campsites (NACE Rev.2, 55.3) by month, 2023-2024**



**Table 3. Arrivals at hotels and similar establishments (NACE Rev.2, 55.1), tourist campsites (NACE Rev.2, 55.3) and short-stay accommodation establishments (NACE Rev.2, 55.2), by NUTS2 region, 2023 and 2024**

	2023					2024					Change % of total 2024/2023
	Total	Hotels and similar establishments	Tourist Campsites	Short stay accommodation establishments	Percentage (%) of total	Total	Hotels and similar establishments	Tourist Campsites	Short stay accommodation establishments	Percentage (%) of total	
Total	35,782,424	28,490,209	471,491	6,820,724	100.0	37,153,267	29,494,104	486,724	7,172,439	100.0	3.8
Anatoliki Makedonia, Thraki	1,019,803	722,700	28,854	268,249	2.9	1,072,964	786,425	32,501	254,038	2.9	5.2
Kentriki Makedonia	4,314,913	3,267,053	129,058	918,802	12.1	4,574,012	3,423,386	145,025	1,005,601	12.3	6.0
Dytiki Makedonia <sup>(1)</sup>	173,390	152,955	-	20,435	0.5	171,798	152,882	-	18,916	0.5	-0.9
Ipeiros	983,089	708,392	17,591	257,106	2.7	991,640	719,423	22,643	249,574	2.7	0.9
Thessalia	1,394,409	1,035,417	28,016	330,976	3.9	1,413,980	1,073,243	26,782	313,955	3.8	1.4
Stereia Ellada	1,041,793	870,764	22,214	148,815	2.9	1,040,480	875,909	22,094	142,477	2.8	-0.1
Ionia Nisia	3,332,407	2,544,914	25,846	761,647	9.3	3,518,554	2,674,773	24,265	819,516	9.5	5.6
Dytiki Ellada	945,174	844,258	30,923	69,993	2.6	938,163	840,810	25,155	72,198	2.5	-0.7
Peloponnisos	2,054,571	1,471,444	93,890	489,237	5.7	2,103,855	1,525,886	90,787	487,182	5.7	2.4
Attiki	5,575,052	5,179,098	11,372	384,582	15.6	5,760,913	5,325,114	11,113	424,686	15.5	3.3
Voreio Aigaio <sup>(2)</sup>	574,098	417,638	} <sup>(2)</sup>	156,460	1.6	632,342	478,954	} <sup>(2)</sup>	153,388	1.7	10.1
Notio Aigaio <sup>(2)</sup>	8,046,359	5,902,174		2,077,123	22.5	8,495,274	6,193,285		2,232,440	22.9	5.6
Kriti	6,327,366	5,373,402	16,665	937,299	17.7	6,439,292	5,424,014	16,810	998,468	17.3	1.8

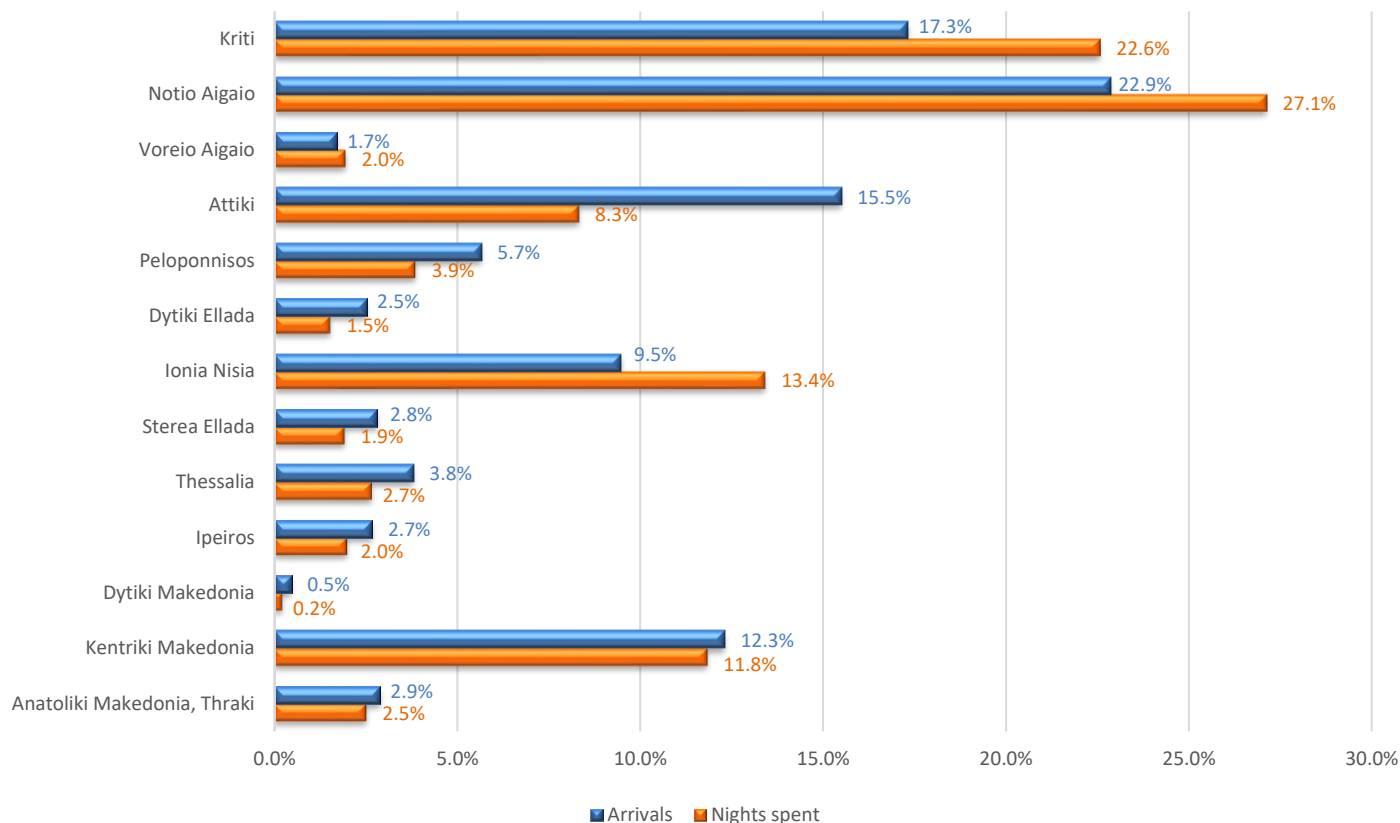
**Table 4. Nights spent at hotels and similar establishments (NACE Rev.2, 55.1), tourist campsites (NACE Rev.2, 55.3) and short-stay accommodation establishments (NACE Rev.2, 55.2), by NUTS2 region, 2023 and 2024**

	2023					2024					Change % of total 2024/2023
	Total	Hotels and similar establishments	Tourist Campsites	Short stay accommodation establishments	Percentage (%) of total	Total	Hotels and similar establishments	Tourist Campsites	Short stay accommodation establishments	Percentage (%) of total	
Total	147,209,821	112,497,629	2,141,101	32,571,091	100.0	152,944,662	116,878,400	2,191,364	33,874,898	100.0	3.9
Anatoliki Makedonia, Thraki	3,809,794	2,315,351	164,819	1,329,624	2.6	3,852,867	2,406,601	210,835	1,235,431	2.5	1.1
Kentriki Makedonia	17,101,498	11,043,573	878,272	5,179,653	11.6	18,109,275	11,662,778	924,575	5,521,922	11.8	5.9
Dytiki Makedonia <sup>(1)</sup>	345,477	297,067	-	48,410	0.2	342,558	297,620	-	44,938	0.2	-0.8
Ipeiros	2,967,032	1,741,599	90,577	1,134,856	2.0	3,058,892	1,886,268	87,479	1,085,145	2.0	3.1
Thessalia	4,124,456	2,656,381	87,664	1,380,411	2.8	4,086,199	2,696,953	82,175	1,307,071	2.7	-0.9
Stereia Ellada	2,981,803	2,228,056	69,833	683,914	2.0	2,943,924	2,224,431	72,914	646,579	1.9	-1.3
Ionia Nisia	19,762,799	13,809,340	123,419	5,830,040	13.4	20,524,700	14,327,897	104,410	6,092,393	13.4	3.9
Dytiki Ellada	2,406,592	2,117,641	85,306	203,645	1.6	2,349,307	2,077,129	71,561	200,617	1.5	-2.4
Peloponnisos	5,757,102	3,959,584	340,348	1,457,170	3.9	5,910,631	4,126,640	342,690	1,441,301	3.9	2.7
Attiki	12,409,598	11,327,339	28,641	1,053,618	8.4	12,742,632	11,596,941	28,771	1,116,920	8.3	2.7
Voreio Aigaio <sup>(2)</sup>	2,838,330	2,017,839	} <sup>(2)</sup>	820,491	1.9	2,982,473	2,178,034	} <sup>(2)</sup>	804,439	2.0	5.1
Notio Aigaio <sup>(2)</sup>	38,362,449	29,954,292		8,184,097	26.1	41,502,625	32,447,938		8,836,591	27.1	8.2
Kriti	34,342,891	29,029,567	48,162	5,265,162	23.3	34,538,579	28,949,170	47,858	5,541,551	22.6	0.6

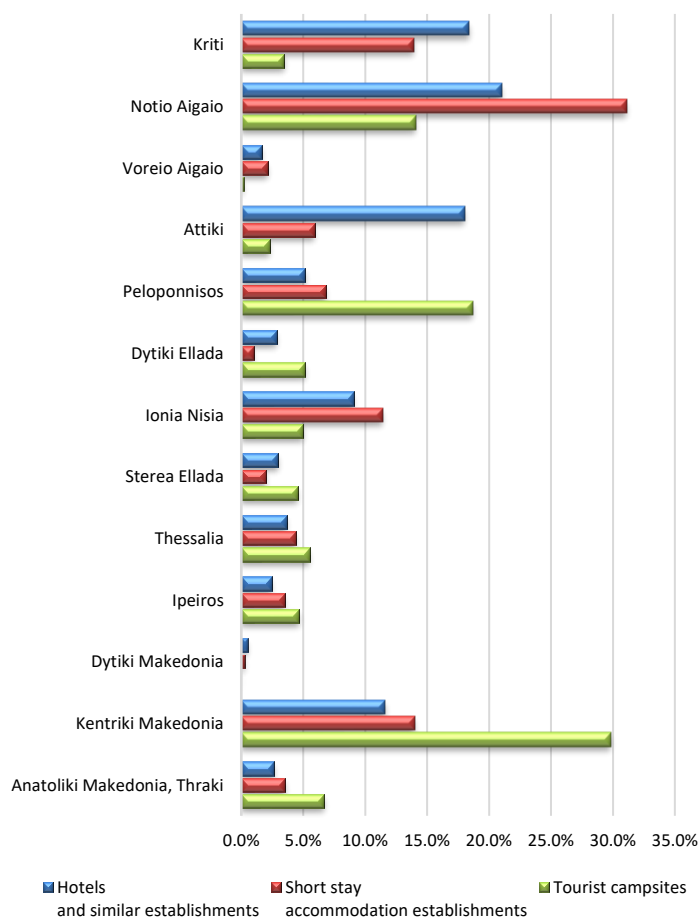
<sup>(1)</sup> The arrivals and nights spent refer to hotels, similar establishments and tourist campsites, which are registered to the Hellenic Chamber of Hotels. For the Region of Dytiki Makedonia there are not tourist campsites registered to the Hellenic Chamber of Hotels.

<sup>(2)</sup> For reasons of statistical confidentiality regarding the protection of the identity of the surveyed units, data on tourist campsites in the Region of Voreio Aigaio have been included in the relevant data for the Region of Notio Aigaio.

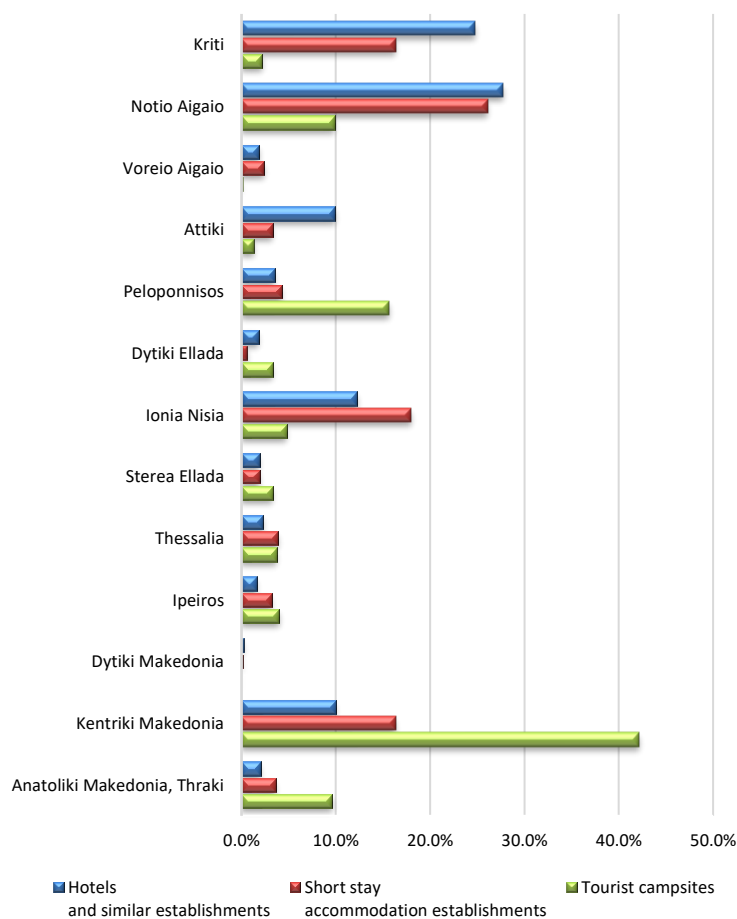
**Graph 8. Percentage distribution of arrivals and nights spent at hotels, similar establishments (NACE Rev.2, 55.1), tourist campsites (NACE Rev.2, 55.3) and short stay accommodation establishments (NACE Rev.2, 55.2), by NUTS 2 Region, 2024**



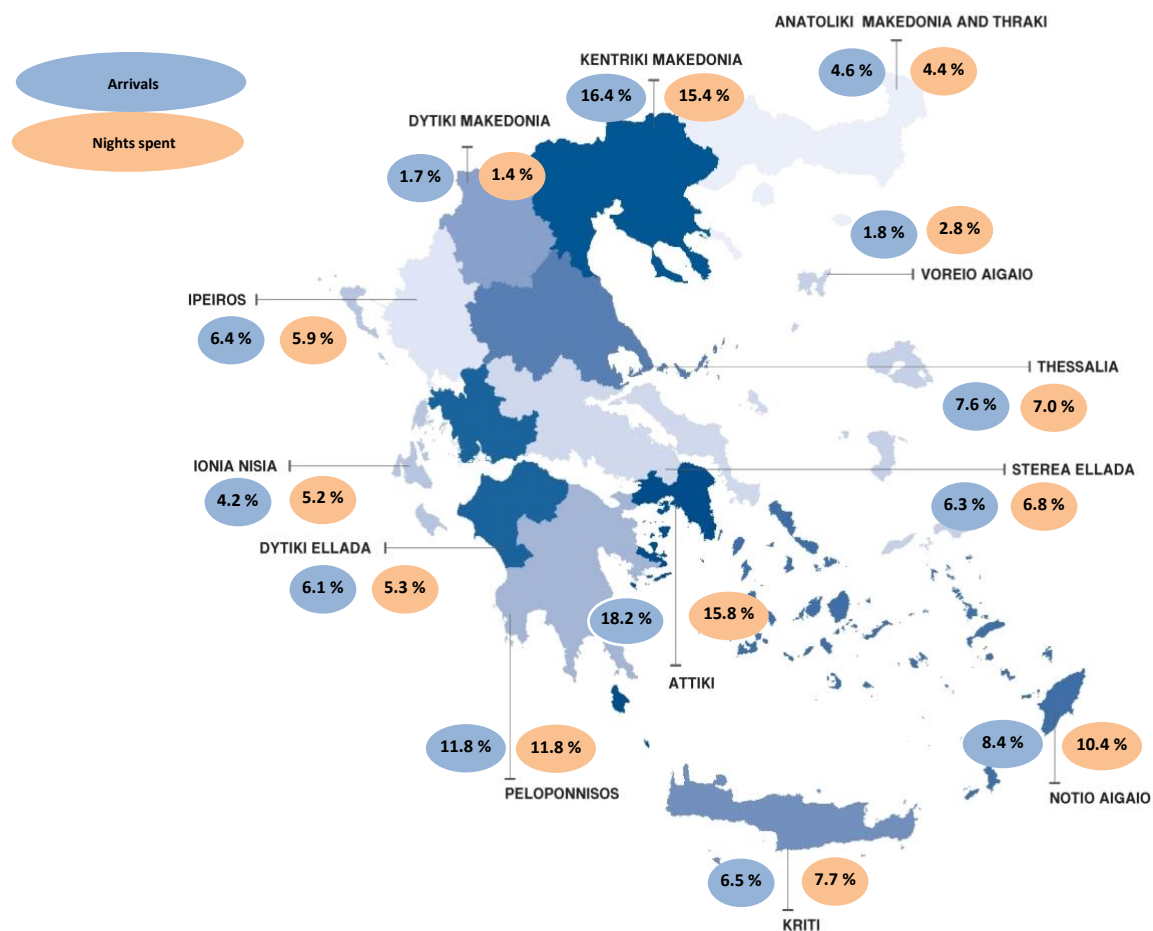
**Graph 9. Percentage (%) distribution of arrivals by type of establishment, NUTS 2 region, 2024**



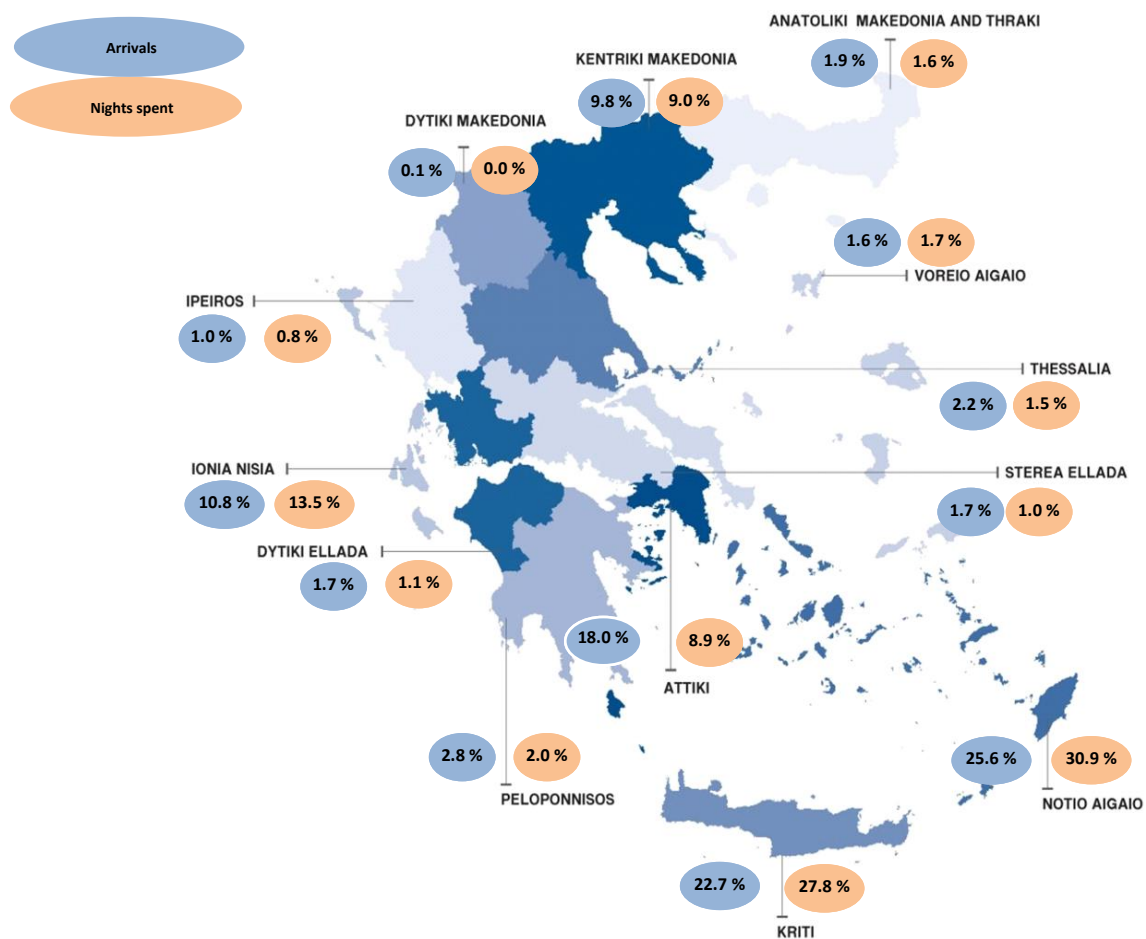
**Graph 10. Percentage (%) distribution of nights spent by type of establishment, NUTS 2 region, 2024**



Graph 11. Percentage (%) of arrivals and nights spent of residents in hotels (NACE Rev.2, 55.1), NUTS 2 region, 2024

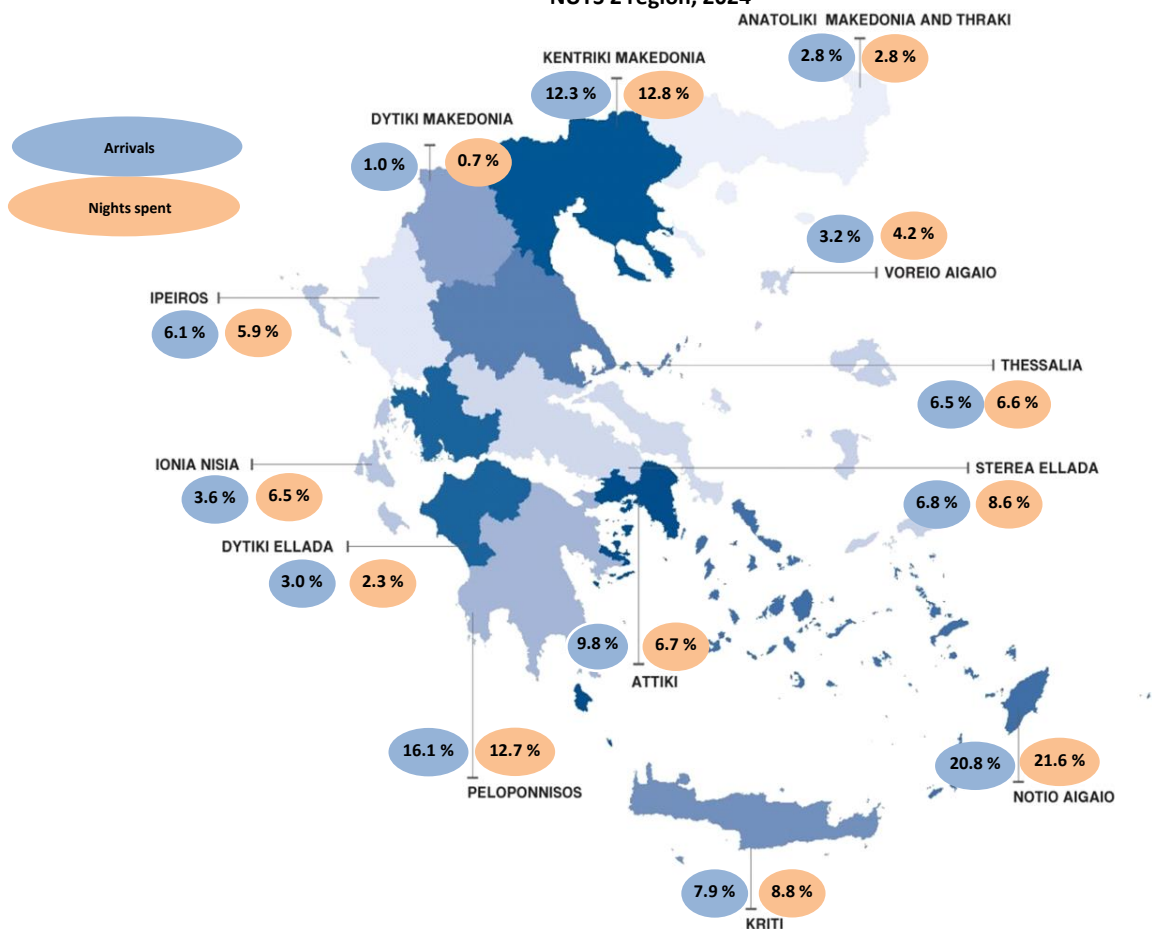


Graph 12. Percentage (%) of arrivals and nights spent of non residents in hotels (NACE Rev.2, 55.1), NUTS 2 region, 2024

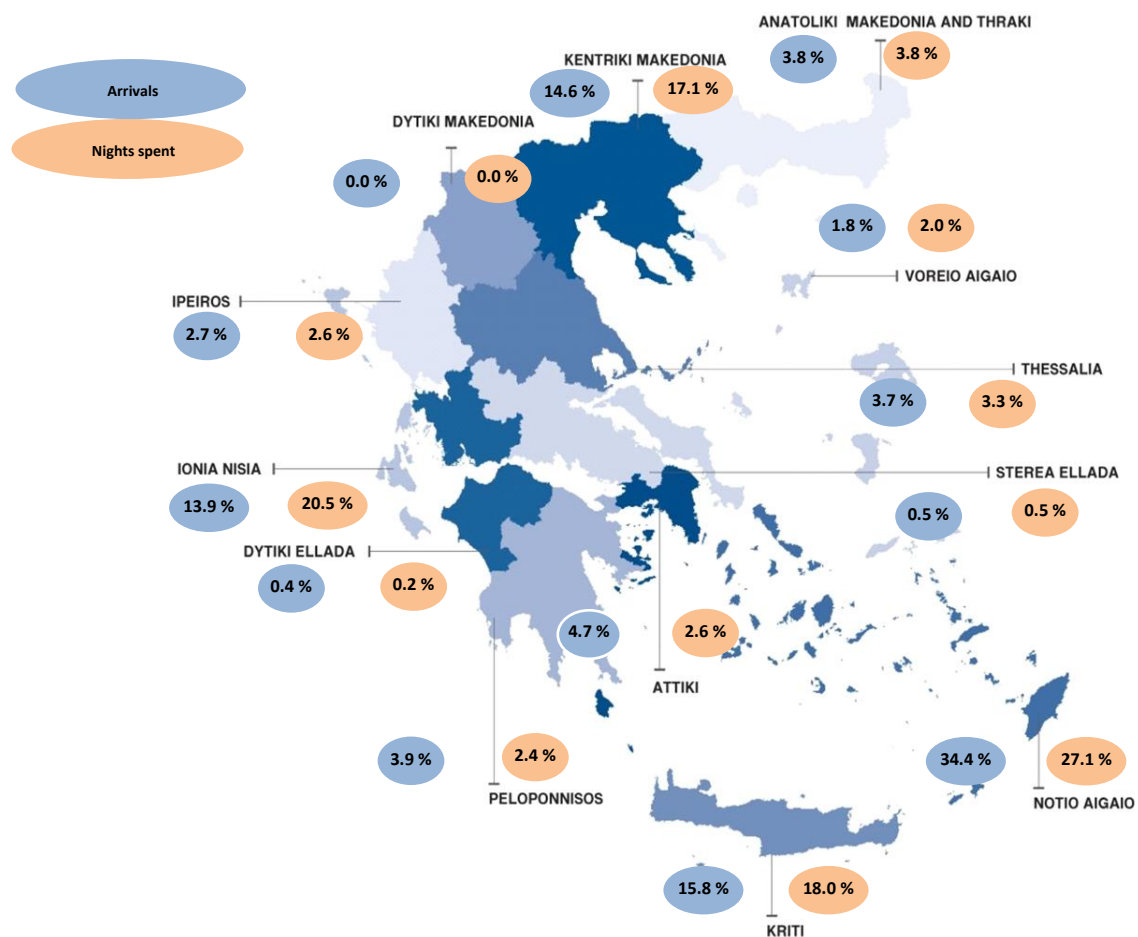




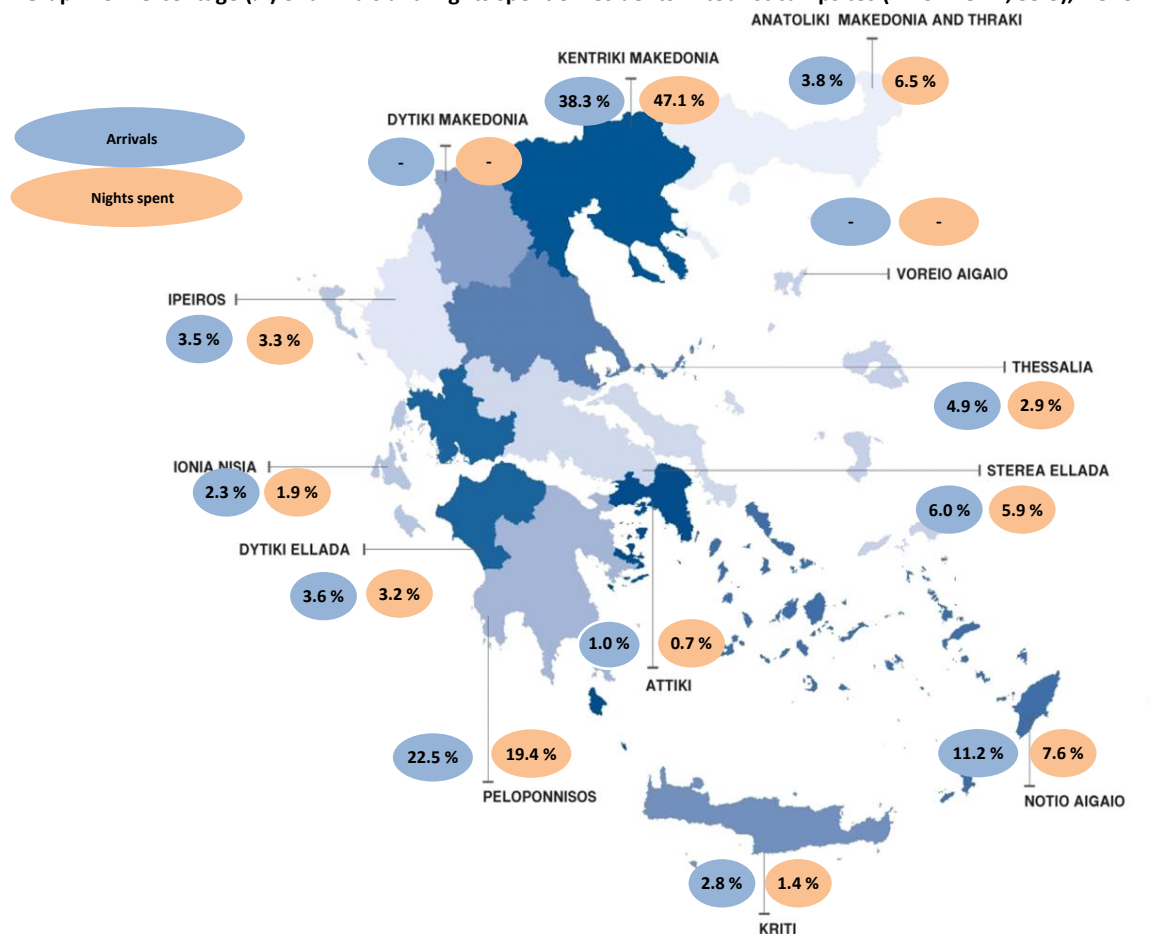
Graph 13. Percentage (%) of arrivals and nights spent of residents in short stay accomodation establishments (NACE Rev.2, 55.2),  
NUTS 2 region, 2024



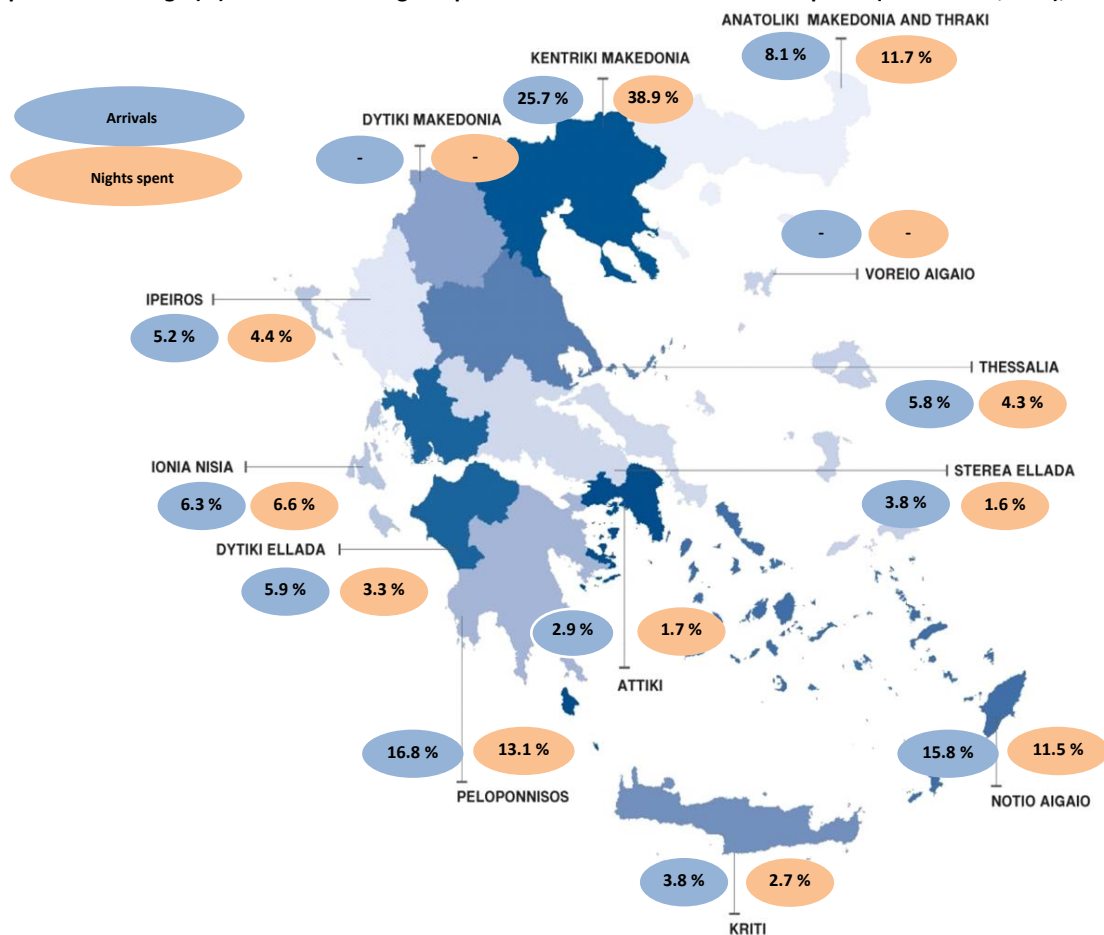
Graph 14. Percentage (%) of arrivals and nights spent of non residents in short stay accomodation establishments (NACE Rev.2, 55.2),  
NUTS 2 region, 2024



Graph 15. Percentage (%) of arrivals and nights spent of residents in tourist campsites (NACE Rev.2, 55.3), NUTS 2 region, 2024<sup>(1)</sup>



Graph 16. Percentage (%) of arrivals and nights spent of non residents in tourist campsites (NACE Rev.2, 55.3), NUTS 2 region, 2024 <sup>(1)</sup>



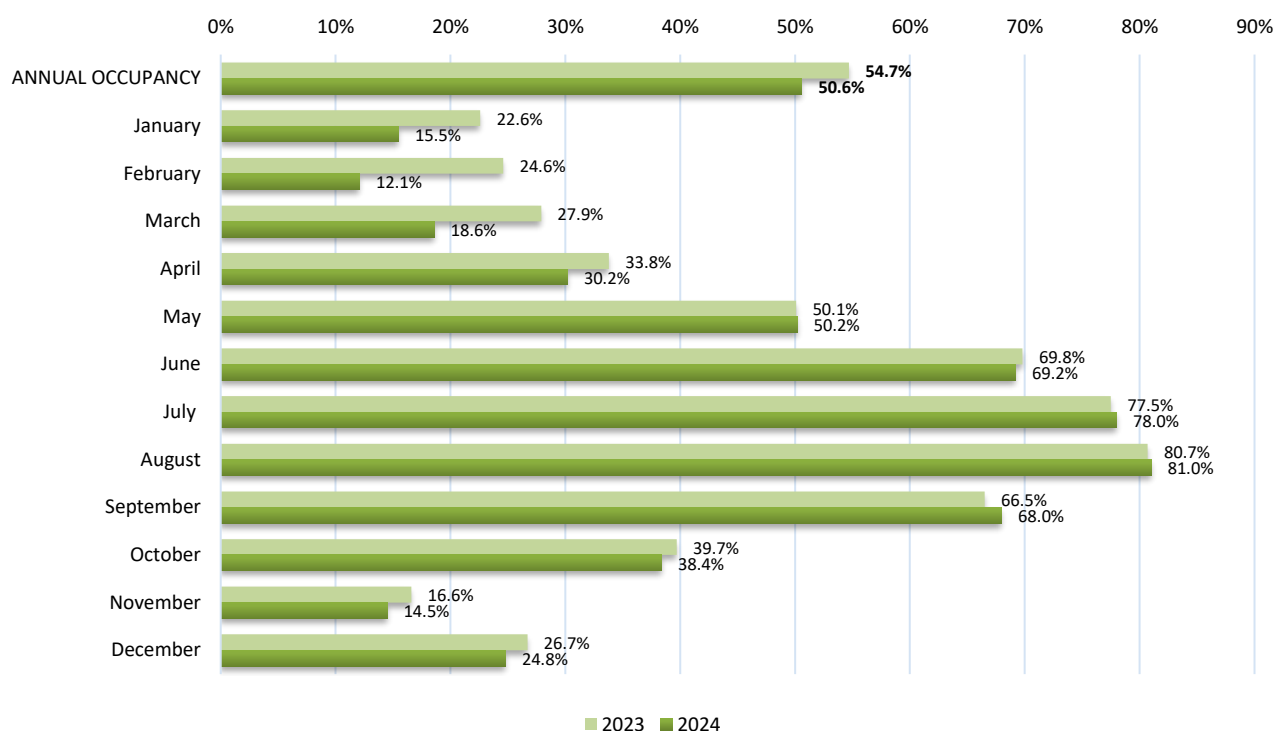
<sup>(1)</sup> For the Region of Dytiki Makedonia there are not tourist campsites registered to the Hellenic Chamber of Hotels. For reasons of statistical confidentiality regarding the protection of the identity of the surveyed units, data on tourist campsites in the Region of Voreio Aigaio have been included in the relevant data for the Region of Notio Aigaio.

**Table 5: Capacity by hotel category, 2024**

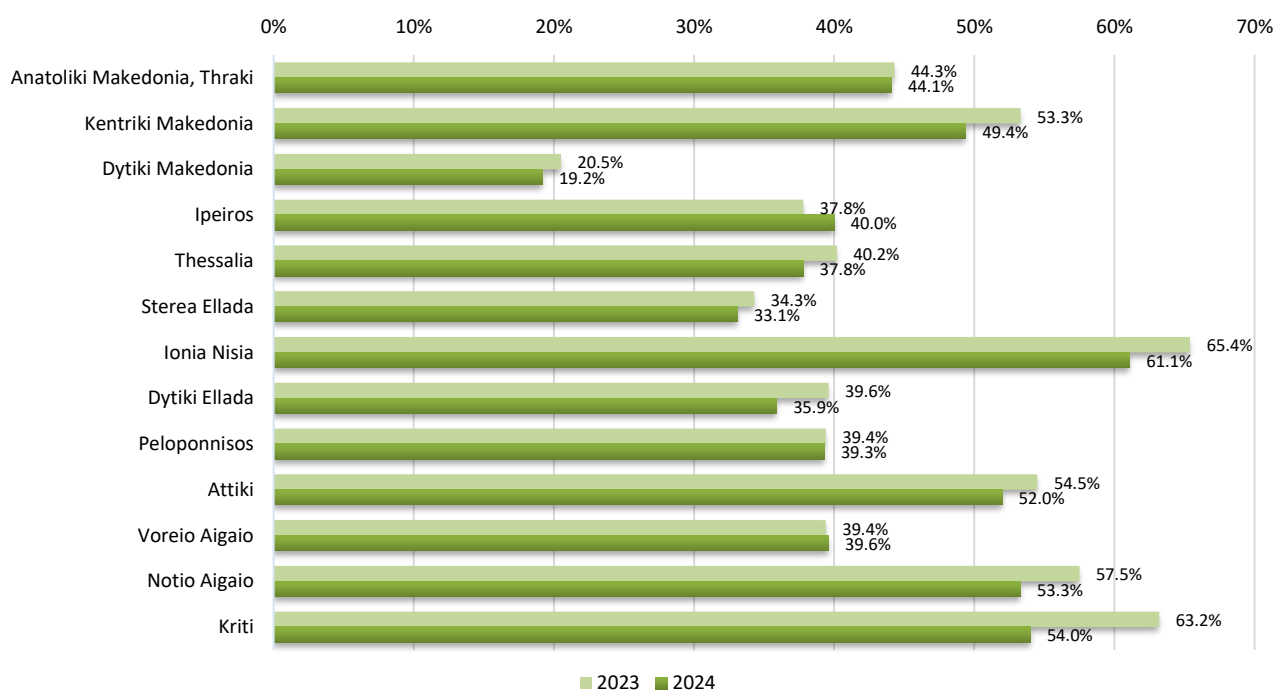
	Establishments	Rooms	Bed places
<b>Total</b>	<b>10,104</b>	<b>447,363</b>	<b>894,854</b>
<b>5*****</b>	835	109,628	229,715
<b>4****</b>	1,898	130,705	262,648
<b>3***</b>	2,973	101,060	198,963
<b>2**</b>	3,251	84,209	160,234
<b>1*</b>	1,147	21,761	43,294

Source: Hellenic Chamber of Hotels.

**Graph 17. Occupancy rate of bed places in hotels and similar type accommodation establishments, by month, 2023 and 2024**



**Graph 18. Occupancy rate of bed places in hotels and similar type accommodation establishments, by NUTS 2 region, 2023 and 2024**



**Note:** Occupancy rates are calculated only for hotels and similar establishments (NACE Rev.2 55.1) as mentioned on Explanatory Notes' Definitions, in accordance with the methodology manual of the Regulation (EE) 692/2011 of the European Parliament and of the Council.

**Table 6. Arrivals of non-residents at hotels, similar establishments and tourist campsites, by country of residence, 2023 and 2024**

	2023					2024					Change % of total 2024/2023
	Total	Hotels and similar establishments	Tourist campsites	Short stay accommodation establishments	Percentage % of total	Total	Hotels and similar establishments	Tourist campsites	Short stay accommodation establishments	Percentage % of total	
<b>Total</b>	<b>26,276,571</b>	<b>20,788,891</b>	<b>317,417</b>	<b>5,170,263</b>	<b>100.0</b>	<b>27,376,639</b>	<b>21,589,620</b>	<b>328,467</b>	<b>5,458,552</b>	<b>100.0</b>	<b>4.2</b>
<b>Europe</b>	<b>20,901,167</b>	<b>16,404,162</b>	<b>283,375</b>	<b>4,213,630</b>	<b>79.5</b>	<b>22,017,966</b>	<b>17,170,953</b>	<b>298,902</b>	<b>4,548,111</b>	<b>80.4</b>	<b>5.3</b>
<b>European Union</b>	<b>14,384,342</b>	<b>11,333,242</b>	<b>244,020</b>	<b>2,807,080</b>	<b>54.7</b>	<b>14,709,152</b>	<b>11,416,395</b>	<b>246,630</b>	<b>3,046,127</b>	<b>53.7</b>	<b>2.3</b>
Austria	436,467	342,959	13,415	80,093	1.7	444,073	348,985	12,880	82,208	1.6	1.7
Belgium	434,049	377,070	4,090	52,889	1.7	458,841	395,807	3,659	59,375	1.7	5.7
Bulgaria	535,252	324,988	37,735	172,529	2.0	551,562	333,032	44,321	174,209	2.0	3.0
France	1,896,705	1,394,621	29,280	472,804	7.2	1,816,131	1,334,029	29,373	452,729	6.6	-4.2
Germany	3,459,026	2,862,426	69,505	527,095	13.2	3,521,428	2,878,119	65,560	577,749	12.9	1.8
Denmark	433,605	375,636	947	57,022	1.7	443,346	385,732	1,058	56,556	1.6	2.2
Estonia	37,975	34,240	302	3,433	0.1	39,891	33,718	213	5,960	0.1	5.0
Ireland	190,012	153,153	1,703	35,156	0.7	201,397	159,683	1,340	40,374	0.7	6.0
Spain	431,631	332,854	5,056	93,721	1.6	433,892	333,308	4,578	96,006	1.6	0.5
Italy	1,297,710	812,635	24,307	460,768	4.9	1,390,862	852,090	25,676	513,096	5.1	7.2
Croatia	40,600	34,921	188	5,491	0.2	41,515	27,534	269	13,712	0.2	2.3
Cyprus	285,681	246,780	634	38,267	1.1	271,791	236,414	1,240	34,137	1.0	-4.9
Latvia	37,847	34,517	133	3,197	0.1	41,254	32,901	153	8,200	0.2	9.0
Lithuania	89,655	81,230	211	8,214	0.3	85,086	76,444	364	8,278	0.3	-5.1
Luxembourg	32,524	28,391	103	4,030	0.1	34,458	32,373	137	1,948	0.1	5.9
Malta	19,496	14,919	98	4,479	0.1	21,485	17,462	48	3,975	0.1	10.2
Netherlands	1,006,055	810,778	18,063	177,214	3.8	1,041,805	800,445	17,979	223,381	3.8	3.6
Hungary	186,140	126,521	3,088	56,531	0.7	189,932	129,700	3,194	57,038	0.7	2.0
Poland	1,006,816	916,532	9,435	80,849	3.8	1,079,859	962,400	7,857	109,602	3.9	7.3
Portugal	90,439	73,694	634	16,111	0.3	98,265	80,251	709	17,305	0.4	8.7
Romania	919,214	638,334	11,660	269,220	3.5	958,740	640,067	13,081	305,592	3.5	4.3
Slovakia	131,136	115,055	1,285	14,796	0.5	117,125	101,688	1,660	13,777	0.4	-10.7
Slovenia	64,616	49,141	6,026	9,449	0.2	62,061	45,758	5,800	10,503	0.2	-4.0
Sweden	614,299	528,076	775	85,448	2.3	661,816	560,926	1,119	99,771	2.4	7.7
Czechia	428,547	372,282	5,145	51,120	1.6	414,568	364,470	3,806	46,292	1.5	-3.3
Finland	278,845	251,489	202	27,154	1.1	287,969	253,059	556	34,354	1.1	3.3
<b>Total of other European countries</b>	<b>6,516,825</b>	<b>5,070,920</b>	<b>39,355</b>	<b>1,406,550</b>	<b>24.8</b>	<b>7,308,814</b>	<b>5,754,558</b>	<b>52,272</b>	<b>1,501,984</b>	<b>26.7</b>	<b>12.2</b>
Iceland	14,458	12,211	8	2,239	0.1	12,695	10,896	50	1,749	0.0	-12.2
Norway	370,329	315,963	365	54,001	1.4	392,405	337,654	378	54,373	1.4	6.0
Switzerland (incl. Liechtenstein)	429,234	350,101	11,497	67,636	1.6	437,232	355,684	12,089	69,459	1.6	1.9
United Kingdom	4,062,317	3,360,007	8,878	693,432	15.5	4,370,432	3,618,893	7,763	743,776	16.0	7.6
Russia	97,367	80,482	423	16,462	0.4	98,707	74,260	379	24,068	0.4	1.4
Serbia	426,063	76,368	1,277	348,418	1.6	632,739	288,648	9,071	335,020	2.3	48.5
Turkey	453,448	372,694	3,994	76,760	1.7	655,116	534,131	7,468	113,517	2.4	44.5
Other European countries	663,609	503,094	12,913	147,602	2.5	709,488	534,392	15,074	160,022	2.6	6.9

	Total	Hotels and similar establishments	2023 Tourist campsites	Short stay accommodation establishments	Percentage % of total	Total	Hotels and similar establishments	2024 Tourist campsites	Short stay accommodation establishments	Percentage % of total	Change % of total 2024/2023
<b>Africa</b>	<b>118,481</b>	<b>96,270</b>	<b>657</b>	<b>21,554</b>	<b>0.5</b>	<b>113,709</b>	<b>94,511</b>	<b>511</b>	<b>18,687</b>	<b>0.4</b>	<b>-4.0</b>
<b>America</b>	<b>3,113,076</b>	<b>2,540,033</b>	<b>16,275</b>	<b>556,768</b>	<b>11.8</b>	<b>3,152,353</b>	<b>2,580,368</b>	<b>14,832</b>	<b>557,153</b>	<b>11.5</b>	<b>1.3</b>
North America	2,779,407	2,274,435	14,093	490,879	10.6	2,819,413	2,309,068	13,094	497,251	10.3	1.4
USA	2,393,959	1,985,508	11,937	396,514	9.1	2,443,176	2,021,448	10,959	410,769	8.9	2.1
Canada	385,448	288,927	2,156	94,365	1.5	376,237	287,620	2,135	86,482	1.4	-2.4
South and Central America	<b>333,669</b>	<b>265,598</b>	<b>2,182</b>	<b>65,889</b>	<b>1.3</b>	332,940	271,300	1,738	59,902	1.2	-0.2
<b>Asia</b>	<b>1,479,518</b>	<b>1,301,767</b>	<b>2,723</b>	<b>175,028</b>	<b>5.6</b>	<b>1,519,338</b>	<b>1,333,803</b>	<b>2,419</b>	<b>183,116</b>	<b>5.5</b>	<b>2.7</b>
Japan	61,867	50,648	134	11,085	0.2	72,546	64,117	100	8,329	0.3	17.3
People's Republic of China	165,987	143,592	357	22,038	0.6	219,588	193,604	302	25,682	0.8	32.3
Other Asian countries	1,251,664	1,107,527	2,232	141,905	4.8	1,227,204	1,076,082	2,017	149,105	4.5	-2.0
<b>Oceania</b>	<b>642,266</b>	<b>433,580</b>	<b>14,387</b>	<b>194,299</b>	<b>2.4</b>	<b>550,844</b>	<b>392,210</b>	<b>11,803</b>	<b>146,831</b>	<b>2.0</b>	<b>-14.2</b>
Australia	<b>589,127</b>	<b>398,859</b>	<b>12,121</b>	<b>178,147</b>	<b>2.2</b>	503,101	359,377	9,613	134,111	1.8	-14.6
New Zealand and other Oceanian territories	<b>53,139</b>	<b>34,721</b>	<b>2,266</b>	<b>16,152</b>	<b>0.2</b>	47,743	32,833	2,190	12,720	0.2	-10.2
<b>Not specified</b>	<b>22,063</b>	<b>13,079</b>	<b>-</b>	<b>8,984</b>	<b>0.1</b>	<b>22,429</b>	<b>17,775</b>	<b>-</b>	<b>4,654</b>	<b>0.1</b>	<b>1.7</b>

**Table 7. Nights spent by non-residents in hotels, similar establishments and tourist campsites, by country of residence, 2023 and 2024**

	Total	Hotels and similar establishments	2023 Tourist campsites	Short stay accomodation establishments	Percentage % of total	Total	Hotels and similar establishments	2024 Tourist campsites	Short stay accomodation establishments	Percentage % of total	Change % of total 2024/2023
<b>Total</b>	<b>123,106,806</b>	<b>95,146,196</b>	<b>1,282,168</b>	<b>26,678,442</b>	<b>100.0</b>	<b>128,180,321</b>	<b>99,043,390</b>	<b>1,317,772</b>	<b>27,819,159</b>	<b>100.0</b>	<b>4.1</b>
<b>Europe</b>	<b>108,830,668</b>	<b>83,960,255</b>	<b>1,183,038</b>	<b>23,687,375</b>	<b>88.4</b>	<b>114,165,160</b>	<b>87,938,541</b>	<b>1,241,021</b>	<b>24,985,598</b>	<b>89.1</b>	<b>4.9</b>
<b>European Union</b>	<b>73,810,196</b>	<b>58,249,622</b>	<b>1,002,964</b>	<b>14,557,610</b>	<b>60.0</b>	<b>75,858,304</b>	<b>59,267,784</b>	<b>979,707</b>	<b>15,610,813</b>	<b>59.2</b>	<b>2.8</b>
Austria	2,338,655	1,826,404	50,191	462,060	1.9	2,363,355	1,863,885	45,529	453,941	1.8	1.1
Belgium	2,121,711	1,875,047	13,105	233,559	1.7	2,274,451	1,979,722	12,941	281,788	1.8	7.2
Bulgaria	2,294,666	1,222,596	257,858	814,212	1.9	2,290,020	1,217,295	289,807	782,918	1.8	-0.2
France	7,753,777	5,676,739	87,197	1,989,841	6.3	7,454,355	5,597,845	82,848	1,773,662	5.8	-3.9
Germany	20,811,988	17,357,675	250,831	3,203,482	16.9	20,929,891	17,346,792	219,882	3,363,217	16.3	0.6
Denmark	2,667,446	2,308,384	3,271	355,791	2.2	2,795,862	2,489,200	2,973	303,689	2.2	4.8
Estonia	188,761	172,384	618	15,759	0.2	199,896	168,199	904	30,793	0.2	5.9
Ireland	844,052	685,544	6,164	152,344	0.7	925,016	720,890	5,136	198,990	0.7	9.6
Spain	1,084,254	798,859	13,419	271,976	0.9	1,117,825	829,526	11,237	277,062	0.9	3.1
Italy	5,415,947	3,183,904	83,761	2,148,282	4.4	5,995,934	3,422,321	82,977	2,490,636	4.7	10.7
Croatia	137,541	111,294	571	25,676	0.1	170,897	93,379	887	76,631	0.1	24.3
Cyprus	813,866	690,079	1,715	122,072	0.7	777,692	654,091	3,501	120,100	0.6	-4.4
Latvia	181,296	166,449	255	14,592	0.1	184,590	152,290	477	31,823	0.1	1.8
Lithuania	476,743	429,815	469	46,459	0.4	430,685	392,105	1,045	37,535	0.3	-9.7
Luxembourg	149,470	132,950	233	16,287	0.1	157,413	148,833	283	8,297	0.1	5.3
Malta	66,588	49,042	339	17,207	0.1	73,873	56,703	178	16,992	0.1	10.9
Netherlands	6,105,341	4,900,279	64,113	1,140,949	5.0	6,252,231	4,791,395	58,171	1,402,665	4.9	2.4
Hungary	1,012,198	669,424	15,853	326,921	0.8	1,034,389	695,115	12,756	326,518	0.8	2.2
Poland	5,334,676	4,873,602	40,407	420,667	4.3	6,008,289	5,438,758	25,531	544,000	4.7	12.6
Portugal	302,931	246,437	1,770	54,724	0.2	337,936	273,510	1,573	62,853	0.3	11.6
Romania	4,611,016	3,019,613	60,619	1,530,784	3.7	4,772,985	2,904,562	75,355	1,793,068	3.7	3.5
Slovakia	743,346	647,392	6,095	89,859	0.6	690,908	590,720	7,747	92,441	0.5	-7.1
Slovenia	307,030	235,648	20,305	51,077	0.2	301,740	219,910	18,265	63,565	0.2	-1.7
Sweden	3,761,167	3,198,670	2,363	560,134	3.1	4,019,657	3,427,338	4,094	588,225	3.1	6.9
Czechia	2,570,539	2,221,857	20,655	328,027	2.1	2,541,295	2,239,673	13,846	287,776	2.0	-1.1
Finland	1,715,191	1,549,535	787	164,869	1.4	1,757,119	1,553,727	1,764	201,628	1.4	2.4
<b>Total of other European countries</b>	<b>35,020,472</b>	<b>25,710,633</b>	<b>180,074</b>	<b>9,129,765</b>	<b>28.4</b>	<b>38,306,856</b>	<b>28,670,757</b>	<b>261,314</b>	<b>9,374,785</b>	<b>29.9</b>	<b>9.4</b>
Iceland	71,513	61,586	14	9,913	0.1	62,298	54,195	211	7,892	0.0	-12.9
Norway	2,439,220	2,091,375	1,020	346,825	2.0	2,565,430	2,233,971	1,152	330,307	2.0	5.2
Switzerland (incl. Liechtenstein)	1,985,523	1,603,584	34,103	347,836	1.6	2,003,378	1,624,208	34,767	344,403	1.6	0.9
United Kingdom	23,147,580	18,456,849	32,249	4,658,482	18.8	24,034,120	19,342,388	27,798	4,663,934	18.8	3.8
Russia	417,102	322,432	1,635	93,035	0.3	387,647	277,485	1,633	108,529	0.3	-7.1
Serbia	3,111,081	493,500	10,095	2,607,486	2.5	4,513,482	1,834,233	69,521	2,609,728	3.5	45.1
Turkey	1,020,858	776,485	9,781	234,592	0.8	1,581,258	1,169,217	28,732	383,309	1.2	54.9
Other European countries	2,827,595	1,904,822	91,177	831,596	2.3	3,159,243	2,135,060	97,500	926,683	2.5	11.7

	Total	Hotels and similar establishments	2023 Tourist campsites	Short stay accomodation establishments	Percentage % of total	Total	Hotels and similar establishments	2024 Tourist campsites	Short stay accomodation establishments	Percentage % of total	Change % of total 2024/2023
<b>Africa</b>	<b>371,283</b>	<b>301,752</b>	<b>2,268</b>	<b>67,263</b>	<b>0.3</b>	<b>366,270</b>	<b>302,471</b>	<b>1,768</b>	<b>62,031</b>	<b>0.3</b>	<b>-1.4</b>
<b>America</b>	<b>7,913,432</b>	<b>6,143,060</b>	<b>42,250</b>	<b>1,728,122</b>	<b>6.4</b>	<b>7,999,212</b>	<b>6,202,633</b>	<b>34,531</b>	<b>1,762,048</b>	<b>6.2</b>	<b>1.1</b>
North America	7,042,987	5,460,833	35,823	1,546,331	5.7	7,120,704	5,493,887	30,312	1,596,505	5.6	1.1
USA	6,020,211	4,739,109	29,364	1,251,738	4.9	6,122,819	4,772,164	24,355	1,326,300	4.8	1.7
Canada	1,022,776	721,724	6,459	294,593	0.8	997,885	721,723	5,957	270,205	0.8	-2.4
South and Central America	870,445	682,227	6,427	181,791	0.7	878,508	708,746	4,219	165,543	0.7	0.9
<b>Asia</b>	<b>4,058,810</b>	<b>3,524,680</b>	<b>9,103</b>	<b>525,027</b>	<b>3.3</b>	<b>3,997,801</b>	<b>3,480,465</b>	<b>6,589</b>	<b>510,747</b>	<b>3.1</b>	<b>-1.5</b>
Japan	122,272	97,082	305	24,885	0.1	143,689	123,997	174	19,518	0.1	17.5
People's Republic of China	359,002	303,839	586	54,577	0.3	445,218	390,699	631	53,888	0.3	24.0
Other Asian countries	3,577,536	3,123,759	8,212	445,565	2.9	3,408,894	2,965,769	5,784	437,341	2.7	-4.7
<b>Oceania</b>	<b>1,875,538</b>	<b>1,190,545</b>	<b>45,509</b>	<b>639,484</b>	<b>1.5</b>	<b>1,583,734</b>	<b>1,063,138</b>	<b>33,863</b>	<b>486,733</b>	<b>1.2</b>	<b>-15.6</b>
Australia	1,721,904	1,097,024	38,958	585,922	1.4	1,449,802	976,972	27,682	445,148	1.1	-15.8
New Zealand and other Oceanian territories	153,634	93,521	6,551	53,562	0.1	133,932	86,166	6,181	41,585	0.1	-12.8
<b>Not specified</b>	<b>57,075</b>	<b>25,904</b>	<b>-</b>	<b>31,171</b>	<b>0.0</b>	<b>68,144</b>	<b>56,142</b>	<b>-</b>	<b>12,002</b>	<b>0.1</b>	<b>19.4</b>

## EXPLANATORY NOTES

### Arrivals and nights spent at hotels, similar establishments, tourist campsites and short stay accommodation establishments

Data on arrivals and nights spent at hotels, similar establishments and tourist campsites (NACE Rev. 2, 55.1 & 55.3) are collected from a monthly census survey. Each establishment fills in a questionnaire, for every month that it is in operation. It is mandatory for all hotels, similar establishments and tourist campsites to participate in the survey.

Data on the arrivals and nights spent in short-stay accommodation establishments (NACE Rev.2, 55.2), until reference year 2019, were collected through a sample survey. Since reference year 2020 data are collected from the total of short-stay accommodation establishments in operation, for each month of operation.

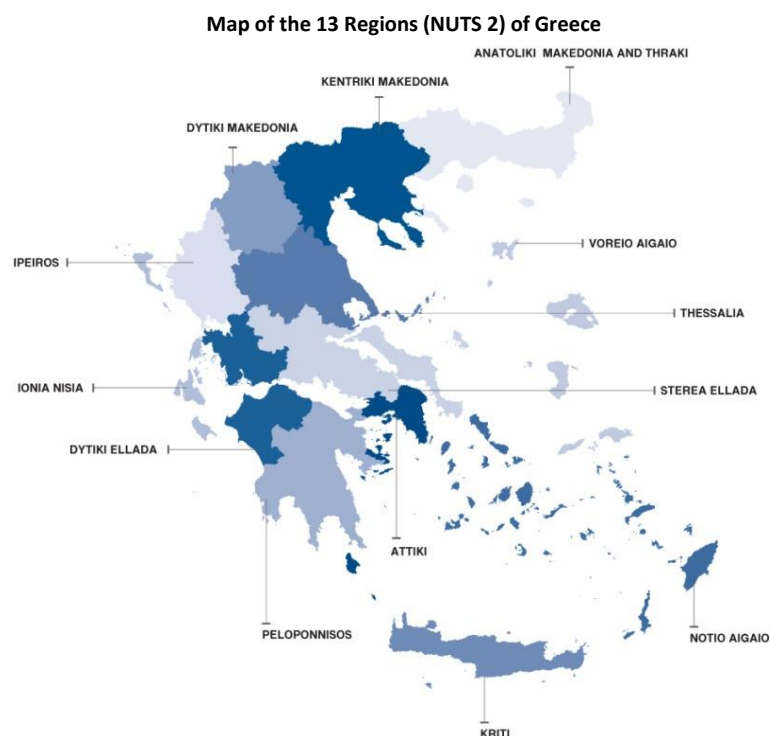
**Legal frame** Regulation (EE) [692/2011](#) of the European Parliament and of the Council.

**Reference unit** Data refer to all establishments (hotels, similar establishments and tourist campsites, NACE Rev.2 55.1, 55.3) that are registered in the Hellenic Chamber of Hotels, while for short-stay accommodation establishments (NACE Rev. 2, 55.2), data derive from the Statistical Register of short-stay accommodation establishments (rooms for rent) of ELSTAT, which is regularly updated by administrative data.

**Reference period** 2024 (Final data).

**Coverage** The survey results refer to 100% of the total of the available bed-places.

**Geographical classification** The geographical classification is based on Nomenclature of Territorial Units for Statistics (Regulation (EC) 1059/2003 as in force).



**Definitions** Resident: Every person, regardless of citizenship, that has resided in Greece for at least a year, or has arrived in Greece with the intention to reside in the country for at least 1 year.

Non-resident: Every person, regardless of citizenship, that is not considered to be resident.

Arrivals: The arrivals at the establishments are calculated for every person separately. The data refer to the total number of persons and not to the total number of rooms that were occupied. Only the persons that had at least one overnight stay at the establishment are counted.

Nights spent: The nights spent are calculated for every person separately. The data refer to the total number of nights spent by every person and not to the total number of nights spent in every room.

Occupancy of bed-places: The monthly occupancy of bed-places is calculated on the basis of the number of the bed-places, as reported by each establishment. The rate refers to the occupancy that was accomplished, as compared with the maximum occupancy that is expected according to the available bed-places.

The occupancy of the period is the result of the average occupancy rates of every month of the period, weighted by the bed-places that were in operation for each month.

### Methodology

Data is collected through a census survey, which conducted on a monthly basis. The results are compiled through the collection and processing of the relevant data submitted, via a questionnaire, by hotels, similar establishments and tourist campsites for each month of operation.



The questionnaires are mostly submitted electronically, via ELSTAT's web application "[Xenios Zeus](#)" or, alternatively, for establishments that this is not possible, in paper form. Data refer to arrivals and nights spent of residents and non-residents on a monthly basis by country of residence of the guests.

For hotel type accommodation establishments and tourist campsites (NACE Rev.2 55.1 and 55.3), the survey is based on ELSTAT's Statistical Register of hotels, similar establishments and tourist campsites, which is regularly updated during the year by data of the Hellenic Chamber of hotels, so that data refer to the actual number of accommodation establishments and campsites that are in operation for each month.

For short stay accommodation establishments (NACE Rev. 2, 55.2), until reference year 2019, data were collected through a sample survey with reference unit the short-stay accommodation establishment. Since reference year 2020, data is collected on a monthly basis from all establishments in operation, for each month of operation. An additional sample collection is carried out throughout the country to enhance the response rate. The survey design (estimation of the sample size, selection of the sample units) is based on ELSTAT's Statistical Register of short-stay accommodation establishments, that is regularly updated by administrative data. For the survey design, the single stratified sampling method is applied.

Non-response to the survey is addressed as follows:

1. Regular reminders are sent out to the establishments that have not responded to the survey, for submitting data.
2. For the percentage of establishments, which despite the reminders have not responded to the survey, supplementary administrative data are used, and statistical methods are applied for grossing-up of the results to the total of establishments.

**References** More information at a more detailed geographical level of the survey results on hotels, similar establishments and tourist campsites and of short-stay accommodation establishments is available on the website of ELSTAT at: <http://www.statistics.gr/en/statistics/-/publication/STO12/->