



## INDUSTRIAL PRODUCTION INDEX: April 2025, y-o-y decrease of 4.3%

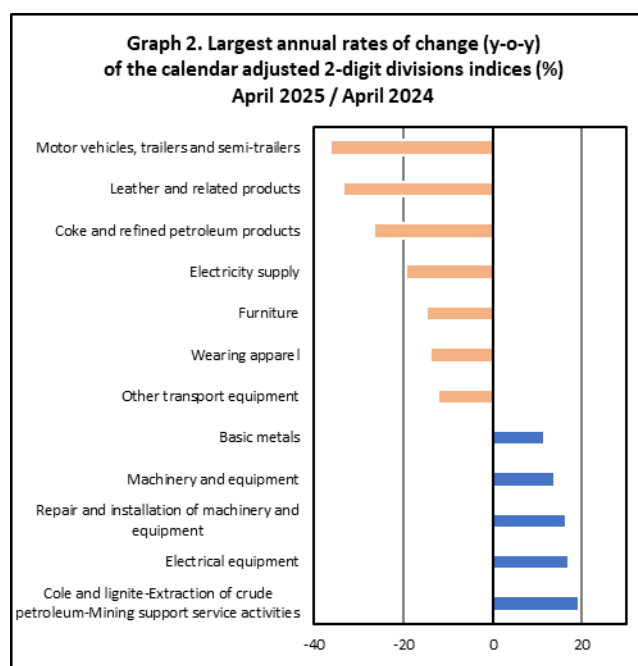
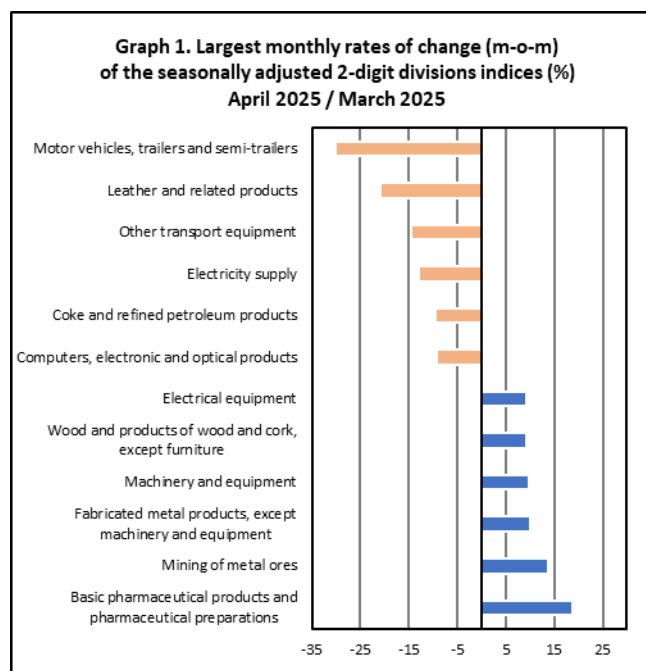
The Hellenic Statistical Authority announces the Industrial Production Index (IPI) with base year 2015=100.0 for April 2025, the evolution of which, on the basis of provisional and working day adjusted data, is as follows:

The Overall Industrial Production Index in April 2025 recorded a decrease of 4.3% compared with April 2024. The Overall IPI in April 2024 increased by 12.3% compared with the corresponding index in April 2023 (Table 1).

The average Overall Industrial Production Index for the period from January to April 2025 recorded an increase of 1.0% compared with the average IPI of the period from January to April 2024 (Table 2).

The seasonally adjusted Overall Industrial Production Index in April 2025 recorded an increase of 0.5% compared with the corresponding index of March 2025 (Table 4).

The index of basic pharmaceutical products and pharmaceutical preparations division showed the greatest percentage increase, whereas the index of motor vehicles, trailers and semi-trailers division recorded the greatest percentage decrease in April 2025 compared with March 2025. Comparing the indices of April 2025 with the corresponding indices of April 2024, the greatest percentage decrease was recorded in motor vehicles, trailers and semi-trailers division, while the highest percentage increase was recorded in mining of coal and lignite – extraction of crude petroleum and natural gas – mining support service activities divisions (Tables 1 and 4).



### Information on methodological issues:

Business Statistics Division  
Manufacture-Construction Indices and Industrial Products Section  
Head of the Section: Vlachokosta Evridiki  
Tel: +30 213 135 2056  
E-mail: [e.vlachokosta@statistics.gr](mailto:e.vlachokosta@statistics.gr)

### Information on data provision:

Tel: +30 213 135 2024, 2308, 2310  
E-mail: [data.dissem@statistics.gr](mailto:data.dissem@statistics.gr)

## Evolution of the Industrial Production Index in April 2025

### I. Annual changes: April 2025 / April 2024 (Table 1)

The 4.3% decrease of the working day adjusted Overall IPI in April 2025, compared with the corresponding index in April 2024, is due to the annual changes of the sub-indices in the following industrial sections:

#### Decrease of:

- 19.5% in the Electricity Supply Index.
- 5.4% in the Water Supply Index.
- 4.0% in the Mining and Quarrying Index. The decrease was the result of the annual change of the sub-index in the 2-digit division, other mining and quarrying.
- 1.1% in the Manufacturing Index. The decrease was mainly the result of the annual changes of the sub-indices in the following 2-digit divisions: motor vehicles, trailers and semi-trailers, leather and related products, coke and refined petroleum products, furniture, wearing apparel.

### II. Rates of change of the average index of the period January - April 2025 compared with the corresponding index of the period January - April 2024 (Table 2)

The 1.0% increase of the working day adjusted average Overall IPI in the 4-month period January - April 2025, compared with the corresponding index in January - April 2024, is due to the corresponding rates of change of the sub-indices in the following industrial sections:

#### Increase of:

- 3.9% in the Electricity Supply Index.
- 0.5% in the Water Supply Index.
- 0.4% in the Manufacturing Index.

#### Decrease of:

- 1.1% in the Mining and Quarrying Index.

### III. Monthly changes: April 2025 / March 2025 (Table 4)

The 0.5% increase of the seasonally adjusted Overall IPI in April 2025, compared with the corresponding index in March 2025, is due to the monthly changes of the sub-indices in the following industrial sections:

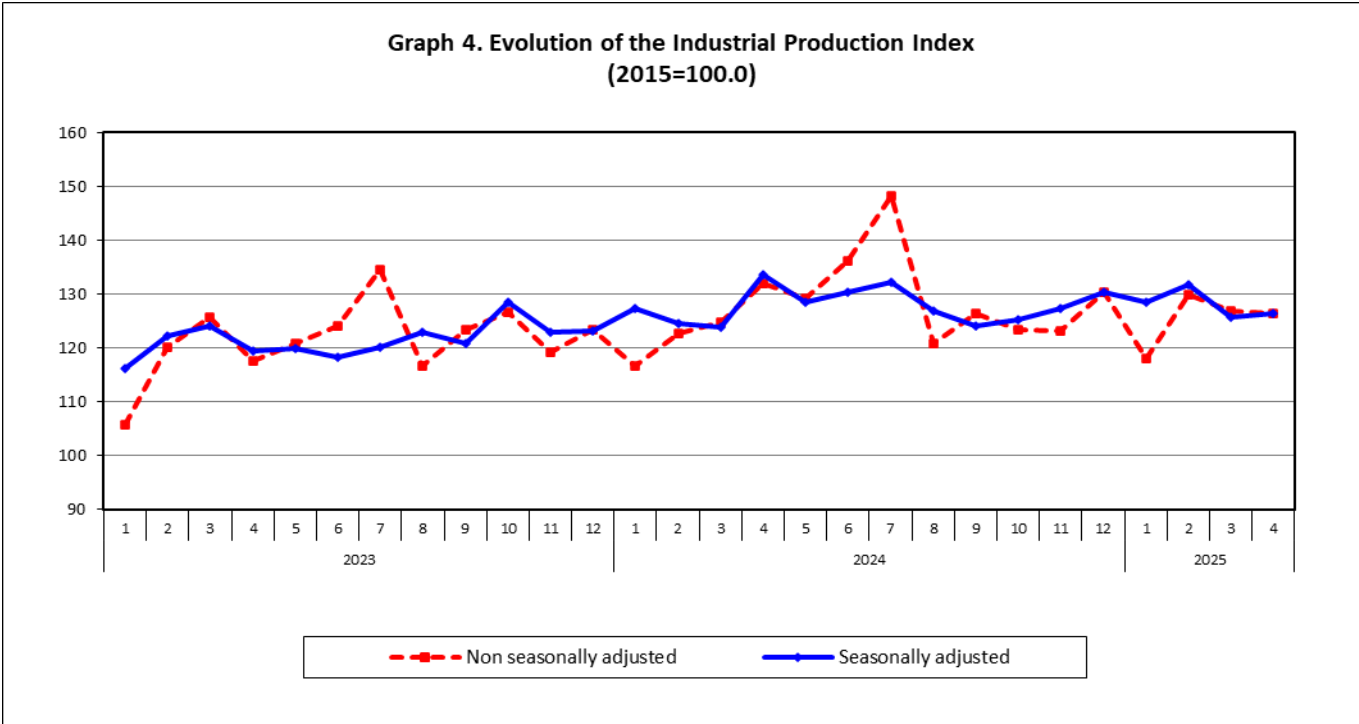
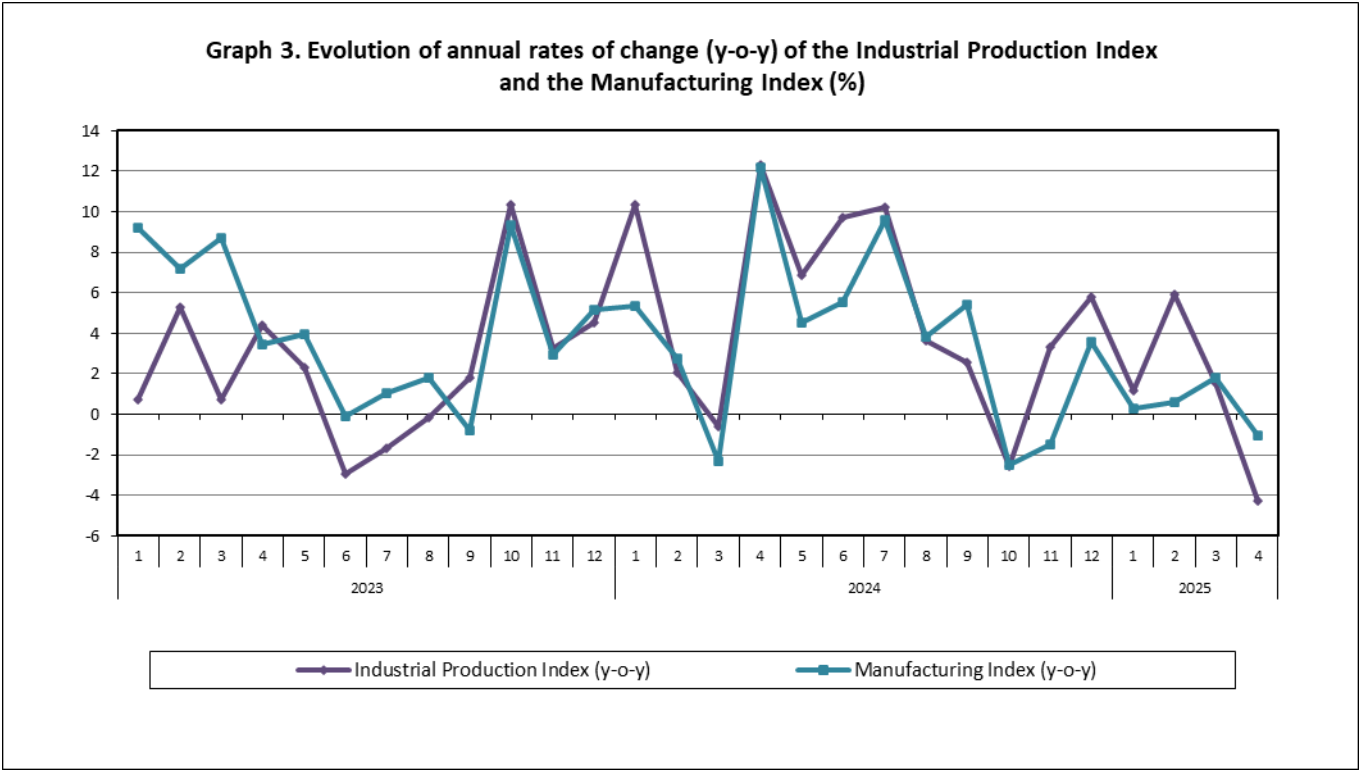
#### Increase of:

- 2.9% in the Manufacturing Index.

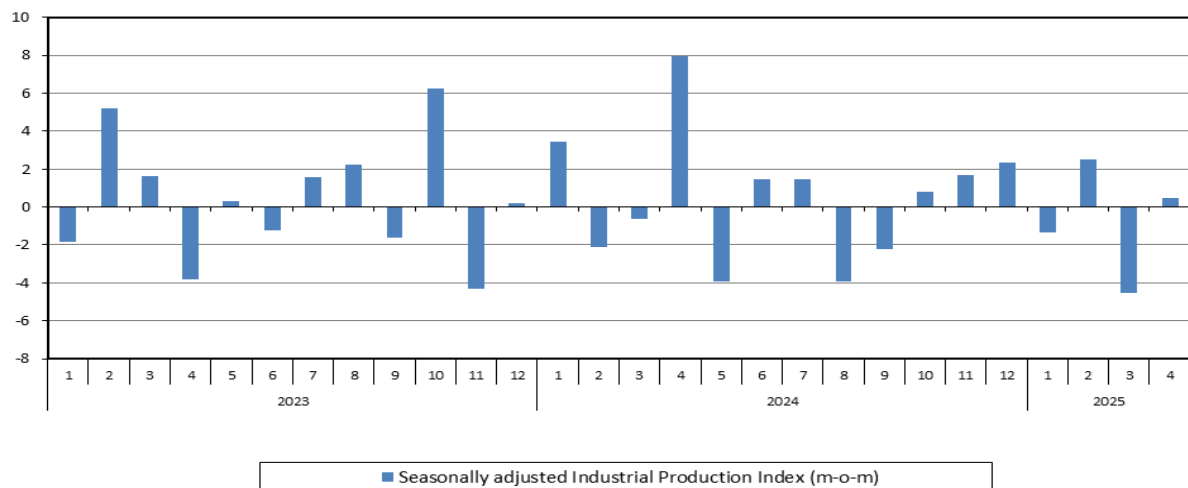
#### Decrease of:

- 1.5% in the Mining and Quarrying Index.
- 2.9% in the Water Supply Index.
- 13.0% in the Electricity Supply Index.

The following graphs depict the annual rates of change (y-o-y) of the Industrial Production Index and the Manufacturing Index, the evolution of the seasonally and non-seasonally adjusted Overall Industrial Production Index, as well as the monthly rates of change (m-o-m) of the seasonally adjusted index.



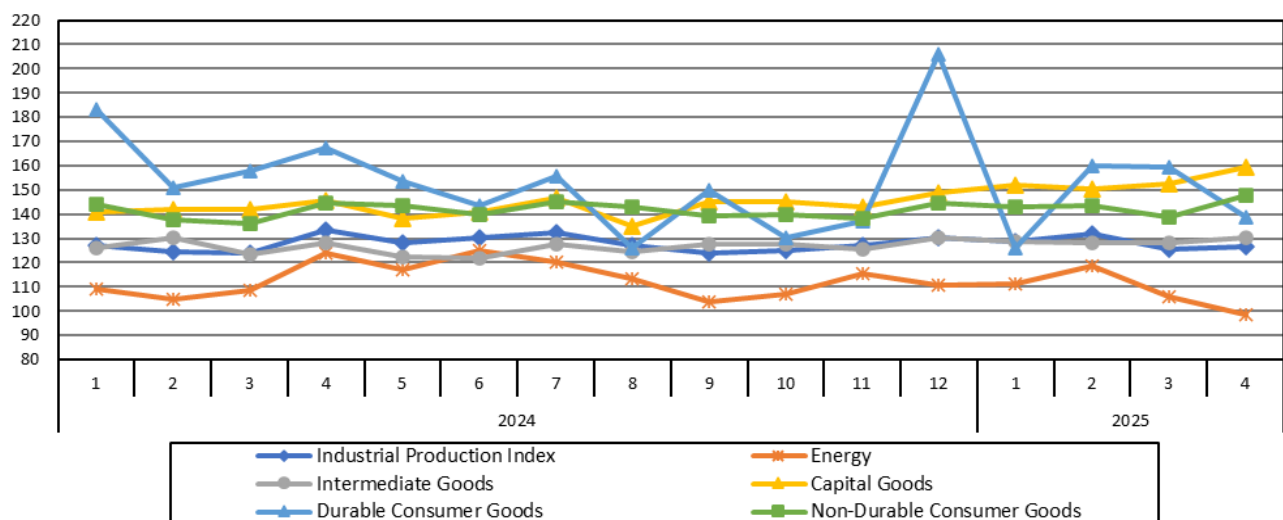
**Graph 5. Evolution of the monthly rates of change (m-o-m) of the seasonally adjusted Industrial Production Index (%)**



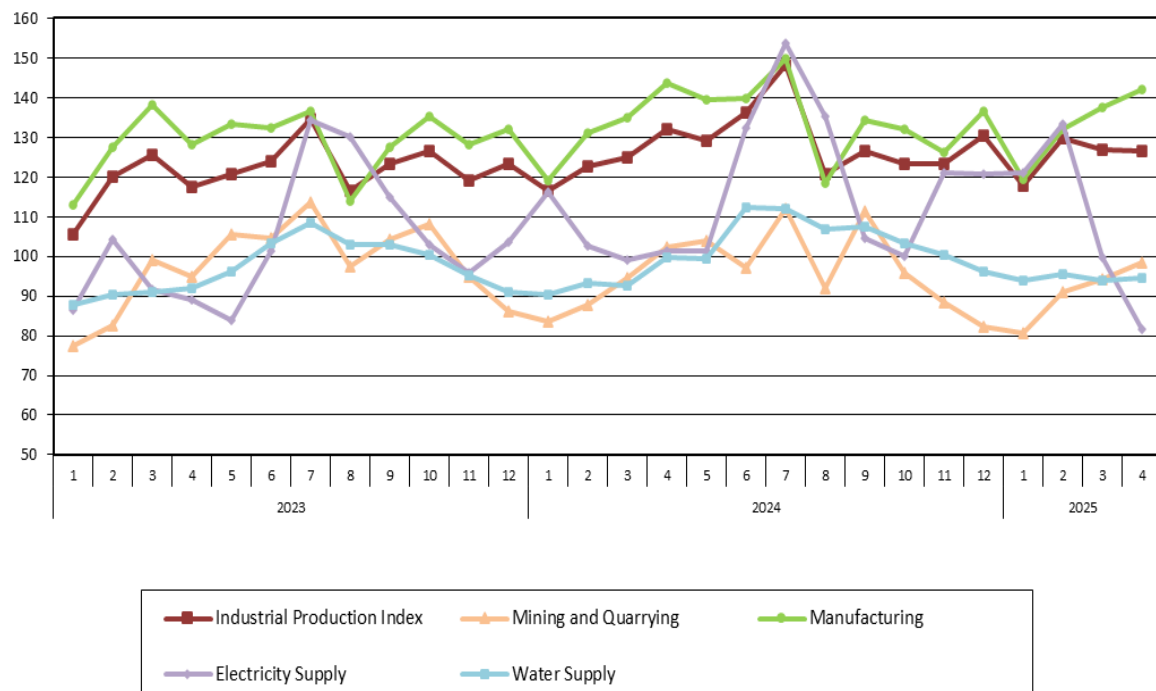
It should be noted that the time series with the seasonally adjusted indices is recalculated every time a new observation is added in the time series. Therefore, the seasonally adjusted data differ from the data published in the previous Announcement.

The following graphs depict the evolution of the seasonally adjusted Industrial Production Index and the Main Industrial Groupings, as well as the evolution of the Industrial Production Index and the Industrial Sections Indices.

**Graph 6. Evolution of the seasonally adjusted Industrial Production Index and the Main Industrial Groupings Indices, January 2024 - April 2025 (2015=100.0)**



**Graph 7. Evolution of the Industrial Production Index and the Industrial Section Indices  
(2015=100.0)**



**Table 1. Annual rates of change of the Industrial Production Index**
*(Working day adjusted data, according to the real number of working days)*
**Base year: 2015=100.0**

Code		Division	April			Rate of change (%)	
			2025*	2024*	2023	2025/2024	2024/2023
OVERALL INDEX			126.46	132.08	117.60	-4.3	12.3
B	MINING AND QUARRYING		98.35	102.44	94.74	-4.0	8.1
05-06-09	Mining of coal and lignite – Extraction of crude petroleum and natural gas – Mining support service activities		27.97	23.46	16.55	19.2	41.8
07	Mining of metal ores		122.59	120.83	122.63	1.5	-1.5
08	Other mining and quarrying		100.36	107.72	96.63	-6.8	11.5
C	MANUFACTURING		142.14	143.66	128.03	-1.1	12.2
10	Food		132.10	126.33	113.89	4.6	10.9
11	Beverages		128.61	126.93	113.34	1.3	12.0
12	Tobacco products		185.78	169.92	141.92	9.3	19.7
13	Textiles		120.53	121.81	113.97	-1.0	6.9
14	Wearing apparel		60.48	70.36	77.58	-14.0	-9.3
15	Leather and related products		81.11	122.17	167.88	-33.6	-27.2
16	Wood and products of wood and cork, except furniture		109.78	112.98	116.75	-2.8	-3.2
17	Paper and paper products		121.62	121.28	113.32	0.3	7.0
18	Printing and reproduction of recorded products		140.42	147.92	132.89	-5.1	11.3
19	Coke and refined petroleum products		88.13	120.27	107.70	-26.7	11.7
20	Chemicals and chemical products		155.20	153.31	130.72	1.2	17.3
21	Basic pharmaceutical products and pharmaceutical preparations		318.75	312.88	256.61	1.9	21.9
22	Rubber and plastic products		143.95	136.88	136.88	5.2	0.0
23	Other non-metallic mineral products		146.34	157.15	131.88	-6.9	19.2
24	Basic metals		154.54	138.53	135.00	11.6	2.6
25	Fabricated metal products, except machinery and equipment		168.07	163.75	134.91	2.6	21.4
26	Computers, electronic and optical products		234.29	228.94	227.23	2.3	0.8
27	Electrical equipment		173.97	148.54	140.67	17.1	5.6
28	Machinery and equipment n. e. c.		157.28	138.22	123.18	13.8	12.2
29	Motor vehicles, trailers and semi-trailers		97.44	152.84	172.15	-36.2	-11.2
30	Other transport equipment		63.53	72.38	67.18	-12.2	7.7
31	Furniture		164.25	192.70	183.03	-14.8	5.3
32	Other manufacturing		140.13	138.56	122.21	1.1	13.4
33	Repair and installation of machinery and equipment		125.97	108.12	83.52	16.5	29.5
D	ELECTRICITY SUPPLY		81.66	101.49	88.99	-19.5	14.0
35	Electricity supply		81.66	101.49	88.99	-19.5	14.0
E	WATER SUPPLY		94.41	99.75	91.82	-5.4	8.6
36	Water collection, treatment and supply		94.41	99.75	91.82	-5.4	8.6
MAIN INDUSTRIAL GROUPINGS							
1	Energy		84.89	107.09	95.02	-20.7	12.7
2	Intermediate goods		136.82	134.65	123.62	1.6	8.9
3	Capital goods		165.33	148.63	130.48	11.2	13.9
4	Consumer Durables		155.68	187.88	157.26	-17.1	19.5
5	Consumer Non-Durables		156.91	153.07	134.78	2.5	13.6

\* Provisional data

Note: The indices are rounded up to two decimal digits when published and percentage changes up to one decimal digit when published.

**Table 2. Average indices of the period January – April and rates of change of the Industrial Production Index**  
*(Working day adjusted data, according to the real number of working days)*

Base year: 2015=100.0

Code		Division	Average indices of the period Jan.-Apr.			Rate of change (%)	
			2025*	2024*	2023	2025/2024	2024/2023
OVERALL INDEX			125.28	124.02	117.27	1.0	5.8
B	MINING AND QUARRYING		91.09	92.07	88.49	-1.1	4.0
05-06-09	Mining of coal and lignite – Extraction of crude petroleum and natural gas – Mining support service activities		27.13	16.47	25.70	64.7	-35.9
07	Mining of metal ores		106.83	126.66	124.29	-15.7	1.9
08	Other mining and quarrying		95.07	91.27	85.41	4.2	6.9
C	MANUFACTURING		132.77	132.23	126.75	0.4	4.3
10	Food		121.49	116.30	110.78	4.5	5.0
11	Beverages		100.43	98.73	93.52	1.7	5.6
12	Tobacco products		182.53	154.99	141.86	17.8	9.3
13	Textiles		113.45	107.37	115.87	5.7	-7.3
14	Wearing apparel		61.04	68.85	79.44	-11.3	-13.3
15	Leather and related products		76.68	91.81	108.53	-16.5	-15.4
16	Wood and products of wood and cork, except furniture		100.20	109.48	107.39	-8.5	1.9
17	Paper and paper products		115.62	115.60	116.21	0.0	-0.5
18	Printing and reproduction of recorded products		137.87	138.33	129.14	-0.3	7.1
19	Coke and refined petroleum products		102.00	116.42	115.51	-12.4	0.8
20	Chemicals and chemical products		142.23	142.18	127.21	0.0	11.8
21	Basic pharmaceutical products and pharmaceutical preparations		280.38	290.02	280.32	-3.3	3.5
22	Rubber and plastic products		135.77	129.36	127.39	5.0	1.5
23	Other non-metallic mineral products		139.01	142.83	124.40	-2.7	14.8
24	Basic metals		151.44	134.02	134.76	13.0	-0.6
25	Fabricated metal products, except machinery and equipment		138.72	140.73	126.17	-1.4	11.5
26	Computers, electronic and optical products		237.14	262.14	247.05	-9.5	6.1
27	Electrical equipment		154.68	144.27	136.85	7.2	5.4
28	Machinery and equipment n. e. c.		131.75	122.20	125.20	7.8	-2.4
29	Motor vehicles, trailers and semi-trailers		112.89	127.14	153.71	-11.2	-17.3
30	Other transport equipment		52.75	58.73	53.19	-10.2	10.4
31	Furniture		133.78	145.76	143.14	-8.2	1.8
32	Other manufacturing		121.47	118.72	121.73	2.3	-2.5
33	Repair and installation of machinery and equipment		124.21	95.05	89.38	30.7	6.3
D	ELECTRICITY SUPPLY		108.92	104.83	92.85	3.9	12.9
35	Electricity supply		108.92	104.83	92.85	3.9	12.9
E	WATER SUPPLY		94.46	93.97	90.16	0.5	4.2
36	Water collection, treatment and supply		94.46	93.97	90.16	0.5	4.2
MAIN INDUSTRIAL GROUPINGS							
1	Energy		105.13	107.19	99.63	-1.9	7.6
2	Intermediate goods		128.44	126.37	119.63	1.6	5.6
3	Capital goods		143.15	132.08	128.17	8.4	3.0
4	Consumer Durables		140.20	152.73	128.67	-8.2	18.7
5	Consumer Non-Durables		141.71	138.94	133.28	2.0	4.2

\* Provisional data

Note: The indices are rounded up to two decimal digits when published and percentage changes up to one decimal digit when published.

**Table 3. Monthly rate of change of the Industrial Production Index**  
*(Working day adjusted data, according to the real number of working days)*

Base year: 2015=100.0

Code	Division	April 2025*	March 2025*	Rate of change (%) Apr. 2025/Mar. 2025
<b>OVERALL INDEX</b>		<b>126.46</b>	<b>126.82</b>	<b>-0.3</b>
<b>B</b>	<b>MINING AND QUARRYING</b>	<b>98.35</b>	<b>94.34</b>	<b>4.3</b>
<b>05-06-09</b>	Mining of coal and lignite – Extraction of crude petroleum and natural gas – Mining support service activities	27.97	30.48	-8.25
<b>07</b>	Mining of metal ores	122.59	108.99	12.5
<b>08</b>	Other mining and quarrying	100.36	98.68	1.7
<b>C</b>	<b>MANUFACTURING</b>	<b>142.14</b>	<b>137.53</b>	<b>3.4</b>
<b>10</b>	Food	132.10	121.83	8.4
<b>11</b>	Beverages	128.61	103.30	24.5
<b>12</b>	Tobacco products	185.78	189.76	-2.1
<b>13</b>	Textiles	120.53	126.22	-4.5
<b>14</b>	Wearing apparel	60.48	65.53	-7.7
<b>15</b>	Leather and related products	81.11	115.07	-29.5
<b>16</b>	Wood and products of wood and cork, except furniture	109.78	103.17	6.4
<b>17</b>	Paper and paper products	121.62	117.08	3.9
<b>18</b>	Printing and reproduction of recorded products	140.42	144.27	-2.7
<b>19</b>	Coke and refined petroleum products	88.13	98.62	-10.6
<b>20</b>	Chemicals and chemical products	155.20	156.74	-1.0
<b>21</b>	Basic pharmaceutical products and pharmaceutical preparations	318.75	253.50	25.7
<b>22</b>	Rubber and plastic products	143.95	147.46	-2.4
<b>23</b>	Other non-metallic mineral products	146.34	149.77	-2.3
<b>24</b>	Basic metals	154.54	160.01	-3.4
<b>25</b>	Fabricated metal products, except machinery and equipment	168.07	152.48	10.2
<b>26</b>	Computers, electronic and optical products	234.29	301.90	-22.4
<b>27</b>	Electrical equipment	173.97	159.53	9.1
<b>28</b>	Machinery and equipment n. e. c.	157.28	142.12	10.7
<b>29</b>	Motor vehicles, trailers and semi-trailers	97.44	161.35	-39.6
<b>30</b>	Other transport equipment	63.53	76.93	-17.4
<b>31</b>	Furniture	164.25	151.04	8.7
<b>32</b>	Other manufacturing	140.13	126.95	10.4
<b>33</b>	Repair and installation of machinery and equipment	125.97	149.68	-15.8
<b>D</b>	<b>ELECTRICITY SUPPLY</b>	<b>81.66</b>	<b>99.60</b>	<b>-18.0</b>
<b>35</b>	Electricity supply	81.66	99.60	-18.0
<b>E</b>	<b>WATER SUPPLY</b>	<b>94.41</b>	<b>94.07</b>	<b>0.4</b>
<b>36</b>	Water collection, treatment and supply	94.41	94.07	0.4
<b>MAIN INDUSTRIAL GROUPINGS</b>				
<b>1</b>	Energy	84.89	98.62	-13.9
<b>2</b>	Intermediate goods	136.82	135.85	0.7
<b>3</b>	Capital goods	165.33	162.72	1.6
<b>4</b>	Consumer Durables	155.68	183.18	-15.0
<b>5</b>	Consumer Non-Durables	156.91	141.57	10.8

\* Provisional data

*Note: The indices are rounded up to two decimal digits when published and percentage changes up to one decimal digit when published.*



**Table 4. Monthly rate of change of the seasonally adjusted Industrial Production Index**

Base year: 2015=100.0					
Code		Division	April 2025	March 2025	Rate of change (%) Apr. 2025 / Mar. 2025
OVERALL INDEX			126.35	125.75	0.5
B	MINING AND QUARRYING		97.62	99.10	-1.5
05-06-09	Mining of coal and lignite – Extraction of crude petroleum and natural gas – Mining support service activities		-	-	-
07	Mining of metal ores		121.72	107.09	13.7
08	Other mining and quarrying		99.90	107.97	-7.5
C	MANUFACTURING		136.43	132.61	2.9
10	Food		128.38	123.13	4.3
11	Beverages		112.34	108.39	3.6
12	Tobacco products		174.14	185.01	-5.9
13	Textiles		111.83	115.41	-3.1
14	Wearing apparel		58.66	60.70	-3.3
15	Leather and related products		64.14	80.99	-20.8
16	Wood and products of wood and cork, except furniture		101.19	92.56	9.3
17	Paper and paper products		117.10	116.87	0.2
18	Printing and reproduction of recorded products		133.61	137.52	-2.8
19	Coke and refined petroleum products		89.83	99.34	-9.6
20	Chemicals and chemical products		139.67	136.66	2.2
21	Basic pharmaceutical products and pharmaceutical preparations		296.67	249.51	18.9
22	Rubber and plastic products		132.14	134.02	-1.4
23	Other non-metallic mineral products		137.21	141.74	-3.2
24	Basic metals		151.23	147.96	2.2
25	Fabricated metal products, except machinery and equipment		158.58	144.23	10.0
26	Computers, electronic and optical products		238.22	262.28	-9.2
27	Electrical equipment		163.74	149.87	9.3
28	Machinery and equipment n. e. c.		145.47	132.37	9.9
29	Motor vehicles, trailers and semi-trailers		117.78	168.25	-30.0
30	Other transport equipment		62.92	73.52	-14.4
31	Furniture		135.39	137.89	-1.8
32	Other manufacturing		138.40	136.06	1.7
33	Repair and installation of machinery and equipment		136.64	137.19	-0.4
D	ELECTRICITY SUPPLY		97.38	111.90	-13.0
35	Electricity supply		97.38	111.90	-13.0
E	WATER SUPPLY		98.15	101.04	-2.9
36	Water collection, treatment and supply		98.15	101.04	-2.9
MAIN INDUSTRIAL GROUPINGS					
1	Energy		98.44	105.72	-6.9
2	Intermediate goods		130.33	128.44	1.5
3	Capital goods		159.43	152.78	4.4
4	Consumer Durables		138.78	159.39	-12.9
5	Consumer Non-Durables		147.62	139.03	6.2

**Notes:**

1. The indices are rounded up to two decimal digits when published and percentage changes up to one decimal digit when published.
2. The whole time-series with seasonally adjusted indices is recalculated every time a new observation is added in the time-series.
3. The composed index of divisions 05-06-09 is not seasonally adjusted.

**Table 5. Evolution of the Overall Industrial Production Index**  
*(Working day adjusted data, according to the real number of working days)*

Base year: 2015=100.0

Year and month	Overall Index	Monthly rate of change (%)	Annual rate of change (%)	12-month average index (moving average)	Rate of change of the 12-month average index (%)
<b>2023:</b>					
1	105.63	-10.5	0.7	118.83	2.5
2	120.18	13.8	5.3	119.33	2.5
3	125.66	4.6	0.7	119.41	1.8
4	117.60	-6.4	4.4	119.82	2.5
5	120.86	2.8	2.3	120.05	2.4
6	124.05	2.6	-3.0	119.73	1.3
7	134.56	8.5	-1.7	119.54	0.5
8	116.61	-13.3	-0.2	119.53	0.1
9	123.27	5.7	1.8	119.71	0.4
10	126.57	2.7	10.3	120.70	1.4
11	119.19	-5.8	3.3	121.01	1.8
12	123.30	3.4	4.5	121.46	2.3
<b>Annual average</b>	<b>121.46</b>				
<b>2024*:</b>					
1	116.56	-5.5	10.3	122.37	3.0
2	122.64	5.2	2.1	122.57	2.7
3	124.87	1.8	-0.6	122.51	2.6
4	132.08	5.8	12.3	123.71	3.2
5	129.14	-2.2	6.8	124.40	3.6
6	136.13	5.4	9.7	125.41	4.7
7	148.32	9.0	10.2	126.56	5.9
8	120.85	-18.5	3.6	126.91	6.2
9	126.42	4.6	2.6	127.17	6.2
10	123.34	-2.4	-2.6	126.90	5.1
11	123.15	-0.2	3.3	127.23	5.1
12	130.42	5.9	5.8	127.83	5.2
<b>Annual average</b>	<b>127.83</b>				
<b>2025*:</b>					
1	117.94	-9.6	1.2	127.94	4.6
2	129.91	10.2	5.9	128.55	4.9
3	126.82	-2.4	1.6	128.71	5.1
4	126.46	-0.3	-4.3	128.24	3.7

\* Provisional data

*Note: The indices are rounded up to two decimal digits when published and percentage changes up to one decimal digit when published.*

Table 6. Monthly evolution of the seasonally adjusted Overall Industrial Production Index and Main Industrial Groupings

Base year: 2015=100.0

Year and month		Overall Index		Energy		Intermediate goods		Capital goods		Consumer durables		Consumer non-durables	
		Index	Monthly rate of change (%)	Index	Monthly rate of change (%)	Index	Monthly rate of change (%)	Index	Monthly rate of change (%)	Index	Monthly rate of change (%)	Index	Monthly rate of change (%)
2023:	1	116.21	-1.8	91.36	-9.7	120.41	0.4	142.53	6.2	140.81	-8.5	134.77	2.1
	2	122.22	5.2	107.20	17.3	118.24	-1.8	143.89	1.0	140.91	0.1	136.80	1.5
	3	124.18	1.6	106.71	-0.5	124.15	5.0	142.51	-1.0	138.84	-1.5	139.73	2.1
	4	119.44	-3.8	109.56	2.7	118.01	-4.9	130.10	-8.7	141.47	1.9	128.54	-8.0
	5	119.79	0.3	99.60	-9.1	119.93	1.6	146.37	12.5	139.92	-1.1	136.06	5.8
	6	118.33	-1.2	95.86	-3.7	119.78	-0.1	142.60	-2.6	146.82	4.9	136.49	0.3
	7	120.19	1.6	108.49	13.2	115.85	-3.3	132.29	-7.2	143.60	-2.2	133.31	-2.3
	8	122.85	2.2	109.81	1.2	119.34	3.0	146.08	10.4	143.39	-0.1	134.15	0.6
	9	120.84	-1.6	110.86	1.0	114.29	-4.2	138.58	-5.1	153.38	7.0	131.66	-1.9
	10	128.38	6.2	112.88	1.8	123.85	8.4	146.10	5.4	162.43	5.9	144.22	9.5
	11	122.81	-4.3	104.31	-7.6	122.30	-1.2	149.11	2.1	167.63	3.2	136.36	-5.5
	12	123.04	0.2	102.74	-1.5	126.52	3.4	151.57	1.7	160.33	-4.4	135.45	-0.7
Annual average		121.52		104.95		120.22		142.64		148.30		135.63	
2024:	1	127.24	3.4	109.03	6.1	125.92	-0.5	141.01	-7.0	183.15	14.2	143.81	6.2
	2	124.57	-2.1	105.07	-3.6	130.04	3.3	141.89	0.6	151.10	-17.5	137.95	-4.1
	3	123.81	-0.6	108.71	3.5	123.23	-5.2	142.04	0.1	157.74	4.4	135.97	-1.4
	4	133.65	7.9	123.84	13.9	128.36	4.2	145.71	2.6	167.31	6.1	144.71	6.4
	5	128.42	-3.9	116.81	-5.7	122.20	-4.8	138.33	-5.1	153.82	-8.1	143.37	-0.9
	6	130.29	1.5	124.81	6.8	121.89	-0.3	141.05	2.0	143.59	-6.6	139.93	-2.4
	7	132.17	1.4	120.41	-3.5	127.47	4.6	146.83	4.1	155.88	8.6	144.97	3.6
	8	126.96	-3.9	113.35	-5.9	124.52	-2.3	134.86	-8.2	126.24	-19.0	143.24	-1.2
	9	124.16	-2.2	103.62	-8.6	127.61	2.5	145.24	7.7	150.06	18.9	139.42	-2.7
	10	125.14	0.8	106.83	3.1	127.78	0.1	144.95	-0.2	130.45	-13.1	139.70	0.2
	11	127.27	1.7	115.53	8.1	125.54	-1.8	143.00	-1.3	137.33	5.3	138.13	-1.1
	12	130.25	2.3	110.91	-4.0	130.38	3.9	148.74	4.0	205.81	49.9	144.79	4.8
Annual average		127.83		113.24		126.24		142.81		155.21		141.33	
2025:	1	128.46	-1.4	111.40	0.4	128.68	-1.3	152.25	2.4	125.82	-38.9	142.77	-1.4
	2	131.70	2.5	118.82	6.7	128.20	-0.4	150.22	-1.3	159.78	27.0	143.67	0.6
	3	125.75	-4.5	105.72	-11.0	128.44	0.2	152.78	1.7	159.39	-0.2	139.03	-3.2
	4	126.35	0.5	98.44	-6.9	130.33	1.5	159.43	4.4	138.78	-12.9	147.62	6.2

## Notes:

1. The indices are rounded up to two decimal digits when published and percentage changes up to one decimal digit when published.
2. The whole time-series with seasonally adjusted indices is recalculated every time a new observation is added in the time-series.

## METHODOLOGICAL NOTES

<b>Generally</b>	The Industrial Production Index (IPI) in Greece has been compiled by the Hellenic Statistical Authority (ELSTAT) from 1959 onwards.
<b>Purpose of the index</b>	The objective of the index is to compare the magnitude (volume) of the output in the current month in the mining and quarrying, manufacturing, electricity and water supply divisions with the corresponding output of a given fixed period, which is considered as base period. The Industrial Production Index shows the evolution of the value added of the production factors cost, at constant prices.
<b>Legal framework</b>	The compilation of the IPI is based on the framework of the implementation of Council Regulation (EC) No 1165/1998 concerning short-term statistics (STS-R). Furthermore, the IPI is governed by Regulation (EC) No 1893/2006 of the European Parliament and of the Council, by Commission Regulation (EC) No 656/2007, by Council Regulation (EC) No 451/2008, by Regulation (EU) No 2019/2152 of the European Parliament and of the Council on European business statistics, as well as Commission Implementing Regulation (EU) No 2020/1197 laying down technical specifications and arrangements pursuant to Regulation (EU) No 2019/2152.
<b>Reference period</b>	Month.
<b>Base year</b>	2015=100.0.
<b>Revision</b>	The IPI is a fixed base index. The Industrial Production Index was currently revised with new base year 2015 (2015=100.0) according to the provisions of Council Regulation No 1165/1998 concerning short-term statistics. Short-term indices are revised every five (5) years, particularly in calendar years ending in 0 or 5.
<b>Statistical classifications</b>	At the level of branches of economic activities, the statistical classification of economic activities NACE Rev.2 of EU was used (Regulation No 1893/2006), while at the level of main industrial groupings, the allocation of two-digit and three-digit NACE Rev. 2 headings to categories of aggregate classification was used, in accordance with Council Regulation No 656/2007. At product level, the statistical classification CPA 2008 of EU was used, according to Council Regulation No 451/2008.
<b>Geographical coverage</b>	The index covers the whole Country.
<b>Coverage of economic activities</b>	The index covers all the sections of industry, the main industrial groups, as well as all levels of economic activity.
<b>Statistical survey</b>	The data are collected from a sample of 1,263 enterprises. The survey covers 325 products and the measurement of the surveyed products is made in terms of output quantities or in terms of production value or turnover, according to the specific features in each branch of economic activity.
<b>Seasonal adjustment</b>	Seasonal adjustment is the procedure followed to remove the impact of seasonality on the time-series (i.e. the impact of monthly effects, e.g. holidays, tourist period etc.), in order to improve comparability over time. The method applied is TRAMO-SEATS with the use of JDemetra+ 2.0.0. For the seasonal adjustment of the Industrial Production Index at 2-digit level of NACE Rev.2, at section level (B – Mining and Quarrying, C – Manufacturing, D – Electricity and E – Water Supply) and for the Main Industrial Groupings (MIGs), the direct approach is applied, namely each time-series is seasonally adjusted independently. For the overall Industrial Production Index, the indirect approach is applied, with the seasonally adjusted IPI being computed by aggregating the seasonally adjusted MIGs using appropriate weights.
<b>Publication of data</b>	The revised IPI with the new base year 2015 (2015=100.0) is released since July 2019, with May 2019 as the first reference month. Data with base year 2015=100.0 are available from January 2000 onwards.
<b>References</b>	More information about the methodology concerning the compilation and calculation of the index and the time series are available on the website of the Hellenic Statistical Authority (ELSTAT) ( <a href="http://www.statistics.gr/en/statistics/-/publication/DKT21/-">http://www.statistics.gr/en/statistics/-/publication/DKT21/-</a> ).