

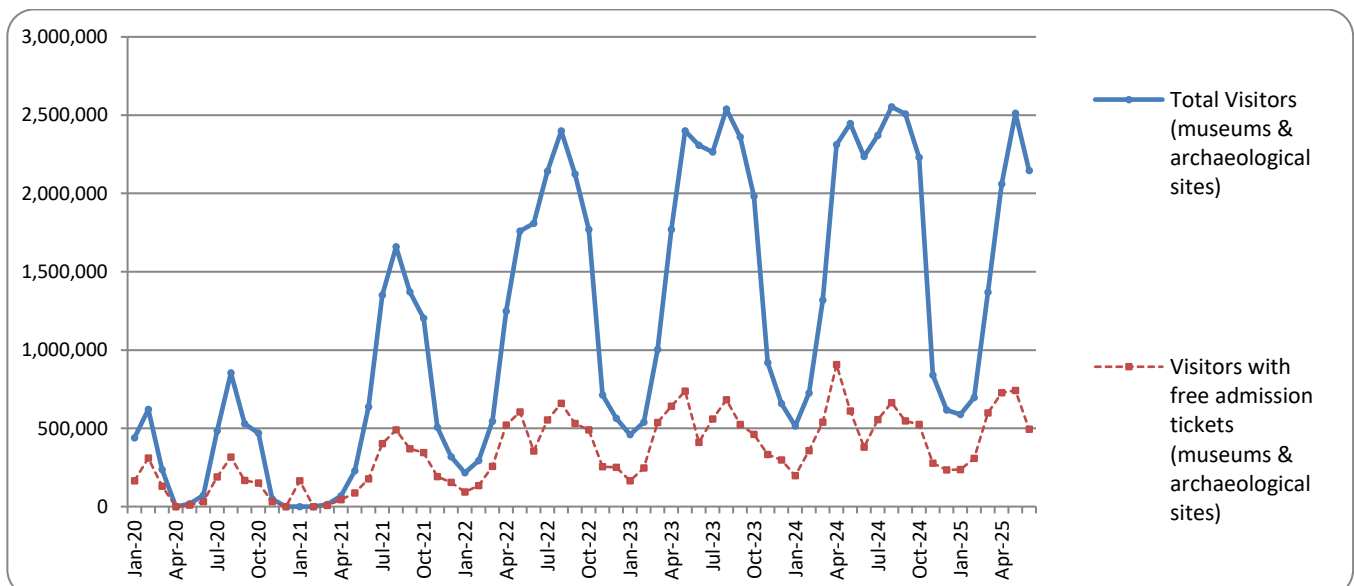


SURVEY ON MUSEUMS AND ARCHAEOLOGICAL SITES ATTENDANCE JUNE 2025

The Hellenic Statistical Authority (ELSTAT) announces the results of the *Survey on Museums and Archaeological Sites Attendance* for June 2025. More specifically:

- During June 2025 compared with the corresponding month of 2024, museums recorded a decrease of 5.4% in the number of visitors, an increase of 21.8% in the number of free admission visitors and an increase of 21.9% in their receipts (Table 1).
- As regards archaeological sites, in June 2025 compared with the corresponding month of 2024, a decrease of 3.4% was recorded in the number of visitors, an increase of 34.6% in the number of free admission visitors and an increase of 45.5% in the corresponding receipts (Table 1).
- During the six-month period from January to June 2025, compared with the corresponding period of 2024, a decrease of 0.2% was recorded in the number of visitors of museums, an increase of 7.7% in the number of free admission visitors and an increase of 35.9% in the relevant receipts (Table 2).
- As regards archaeological sites, during the six-month period from January to June 2025, compared with the corresponding period of 2024, a decrease of 2.8% was recorded in the number of visitors, an increase of 1.5% in the number of free admission visitors, and an increase of 41.6% was observed in the relevant receipts (Table 2).

Graph 1: Visitors of Museums and Archaeological sites (January 2020 – June 2025)



Information on methodological issues:

Sectoral Statistics Division
Tourism and Culture Statistics Section
Head of Section: Eleni Papadopoulou
Tel: +30 213 135 2168
e-mail: e.papadopoulou@statistics.gr

Information for data provision:

Tel. +30 213 135 2022, 2308, 2310
e-mail: data.dissem@statistics.gr

**TABLE 1: VISITORS OF MUSEUMS AND ARCHAEOLOGICAL SITES - TOTAL RECEIPTS
(JUNE 2024 AND JUNE 2025)**

I. NUMBER OF VISITORS			
Museums - Archaeological sites	2024	2025	Change 2025/2024
Total number of visitors (A+B)	2,236,307	2,146,001	-4.0%
A. Museums (C+E)	698,275	660,338	-5.4%
Acropolis Museum ⁽²⁾	246,932	221,714	-10.2%
National Archaeological	60,184	63,824	6.0%
Ancient Olympia ⁽³⁾	34,420	34,071	-1.0%
Palace of the Grand Master (Rhodes) ⁽²⁾	43,967	35,375	-19.5%
Heraklion Archaeological (Crete)	42,773	43,704	2.2%
White Tower	18,937	14,901	-21.3%
Delphi ⁽³⁾	43,463	37,703	-13.3%
Other museums	207,599	209,046	0.7%
B. Archaeological Sites (D+F)	1,538,032	1,485,663	-3.4%
Epidavros	49,464	45,341	-8.3%
The Acropolis of Mycenae & Atreus' Treasure	46,011	41,804	-9.1%
The Acropolis of Athens	525,103	533,787	1.7%
Sounio	45,629	41,166	-9.8%
The Acropolis of Lindos	87,900	81,328	-7.5%
Royal Tombs of Vergina	17,271	14,225	-17.6%
Ancient Olympia ⁽¹⁾⁽³⁾	34,458	31,119	-9.7%
Knossos (Crete)	118,874	120,911	1.7%
Phaistos (Crete)	9,085	8,128	-10.5%
Ancient Korinthos	24,509	26,355	7.5%
Mystras	12,181	11,134	-8.6%
Delphi ⁽³⁾	22,855	20,564	-10.0%
Other archaeological sites	544,692	509,801	-6.4%
II. VISITORS WHO PAID TICKET			
	2024	2025	Change 2025/2024
Total number of visitors who paid ticket (C+D)	1,856,309	1,651,908	-11.0%
C. Museums ⁽²⁾	562,720	495,243	-12.0%
D. Archaeological sites	1,293,589	1,156,665	-10.6%
III. VISITORS WITH FREE ADMISSION TICKETS			
	2024	2025	Change 2025/2024
Total number of visitors with free admission ticket (E+F)	379,998	494,093	30.0%
E. Museums ⁽²⁾	135,555	165,095	21.8%
F. Archaeological sites	244,443	328,998	34.6%
IV. RECEIPTS (euros)			
	2024	2025	Change 2025/2024
Total Receipts (G+H)⁽⁴⁾	22,991,253	32,031,280	39.3%
G. Museums ⁽²⁾	6,005,605	7,319,948	21.9%
H. Archaeological sites	16,985,648	24,711,332	45.5%

(1) Flat rate ticket, valid both for the museum and the archaeological site.

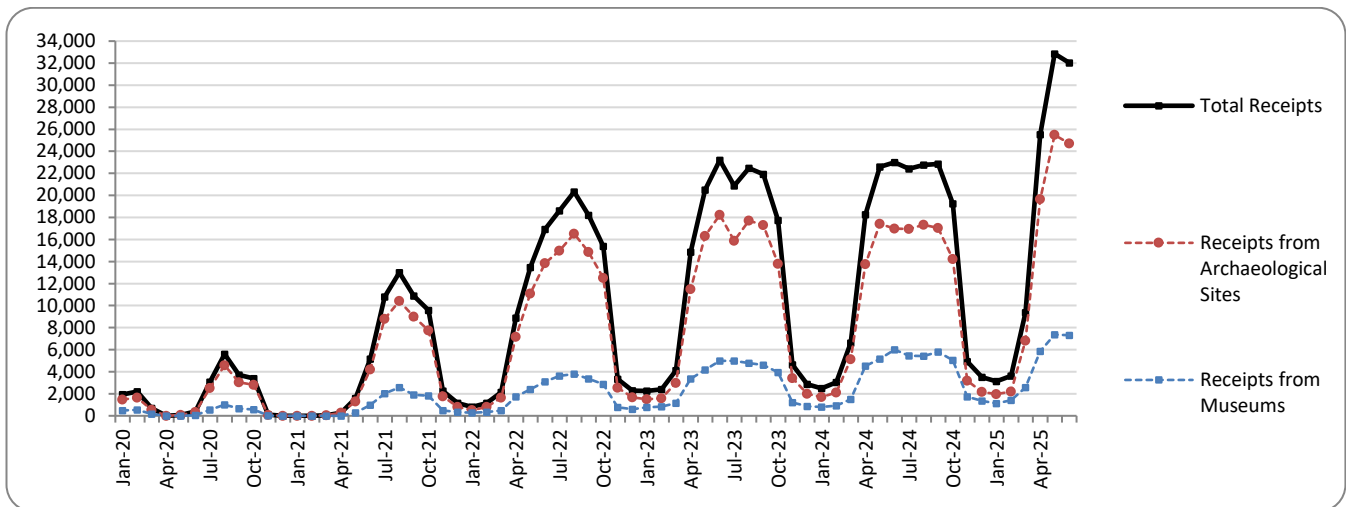
(2) Revised data, due to the transmission of updated data from administrative sources.

(3) Since April 2024, it has been possible to purchase tickets online from the museums of Ancient Olympia and Delphi, with the possibility of visiting the corresponding archaeological site, without it being possible to distinguish between museum and archaeological site visits.

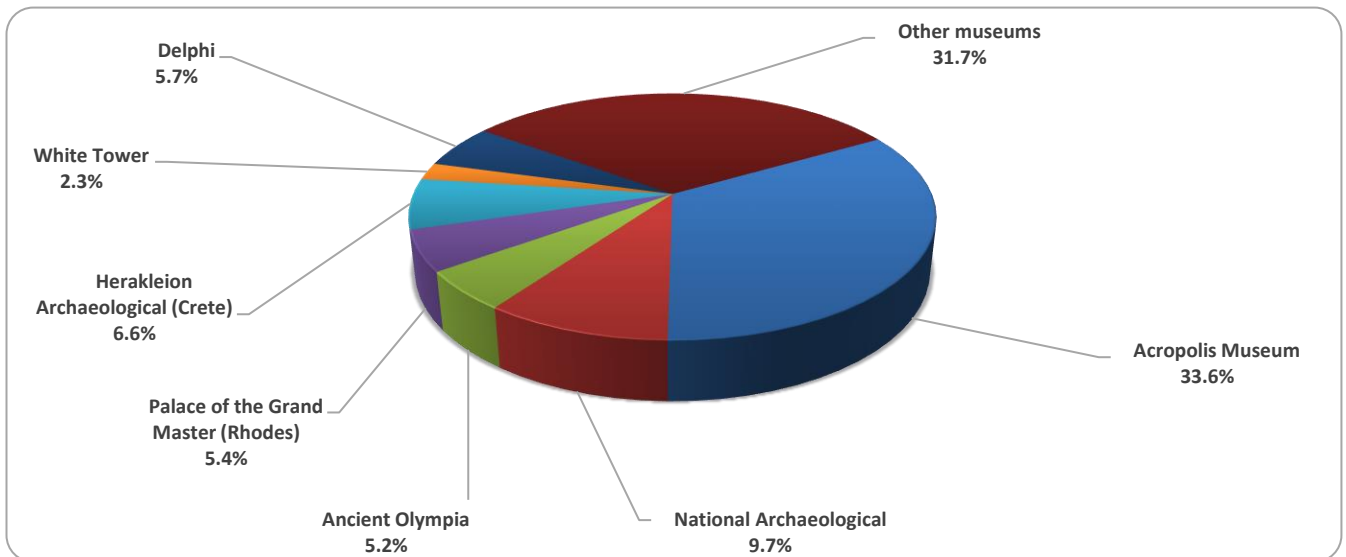
(4) Pursuant to the provisions of Joint Ministerial Decision 117624 (Official Journal 1968/issue B/29-03-24), as of 01/04/2025 a new pricing policy to visits to museums and archaeological sites, is in force.

The following graphs depict the evolution of the receipts of Museums and Archaeological Sites (Graph 2), as well as the number of visitors by Museum (Graph 3) and by Archaeological Site (Graph 4).

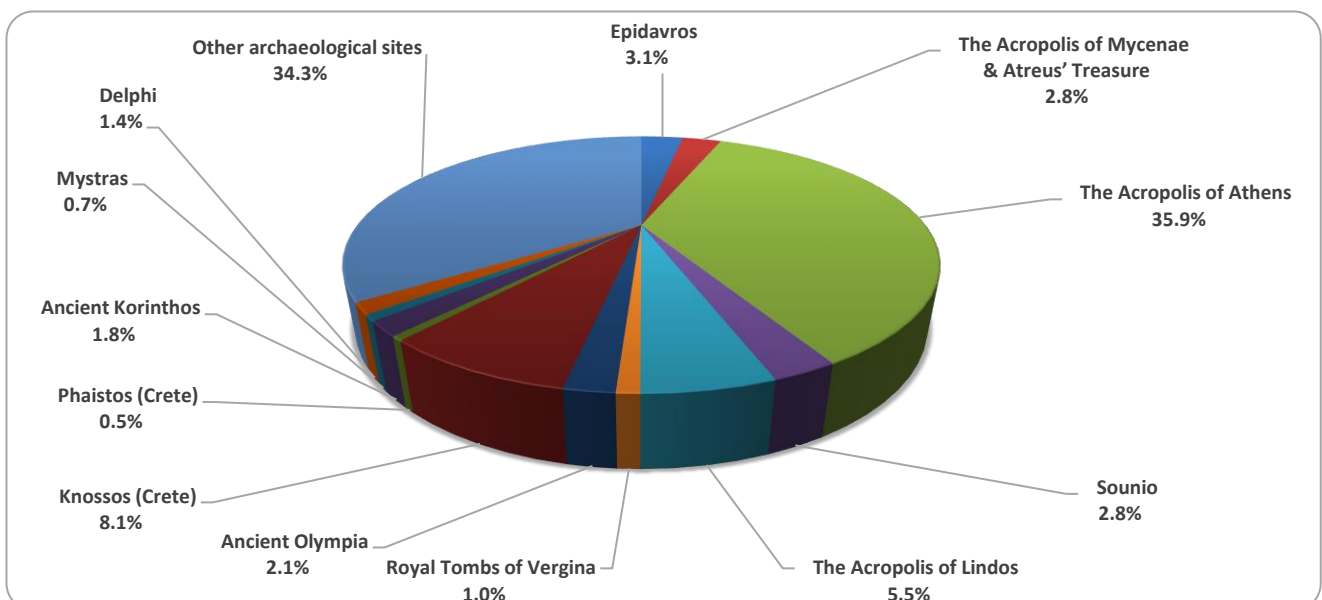
Graph 2: Receipts from Museums and Archaeological Sites (January 2020 – June 2025)
(in thousand euro)



Graph 3: Percentage distribution of visitors by Museum, June 2025



Graph 4: Percentage distribution of visitors by Archaeological site, June 2025



**TABLE 2: VISITORS OF MUSEUMS AND ARCHAEOLOGICAL SITES - TOTAL RECEIPTS
(2023, 2024, JANUARY - JUNE 2024, 2025)**

I. VISITORS					
Museums and Archaeological sites	2023	2024	JANUARY- JUNE		change 2025/2024
			2024	2025	
Total number of visitors (A+B)	19,210,752	20,661,857	9,554,258	9,372,267	-1.9%
A. Museums (C+E)	5,801,812	6,651,911	3,143,212	3,137,621	-0.2%
Acropolis Museum ⁽²⁾	1,900,950	1,994,279	1,009,827	963,705	-4.6%
National Archaeological	642,318	642,956	319,432	321,785	0.7%
Ancient Olympia ⁽³⁾	85,410	286,519	127,306	143,109	12.4%
Palace of the Grand Master (Rhodes) ⁽²⁾	342,607	370,138	130,676	109,602	-16.1%
Herakleion Archaeological (Crete)	294,839	379,363	137,677	141,116	2.5%
White Tower	259,775	239,767	100,200	88,881	-11.3%
Delphi ⁽³⁾	203,445	445,188	237,267	262,878	10.8%
Other museums	2,072,468	2,293,701	1,080,827	1,106,545	2.4%
B. Archaeological Sites (D+F)	13,408,940	14,009,946	6,411,046	6,234,646	-2.8%
Epidavros ⁽¹⁾	525,982	548,971	277,686	287,695	3.6%
The Acropolis of Mycenae & Atreus' Treasure	510,507	547,361	295,176	272,746	-7.6%
The Acropolis of Athens	3,958,405	4,557,693	2,272,530	2,340,508	3.0%
Sounio	393,927	421,556	216,392	188,636	-12.8%
The Acropolis of Lindos	629,089	702,363	230,739	204,840	-11.2%
Royal Tombs of Vergina	202,122	244,013	144,792	101,686	-29.8%
Ancient Olympia ⁽³⁾	481,211	301,987	140,408	116,304	-17.2%
Knossos (Crete)	959,110	1,010,006	361,307	352,225	-2.5%
Phaistos (Crete)	79,934	84,637	29,693	26,313	-11.4%
Ancient Korinthos ⁽¹⁾	210,465	253,085	121,707	129,493	6.4%
Mystras ⁽¹⁾	151,508	153,789	72,802	69,556	-4.5%
Delphi ⁽³⁾	482,293	292,619	167,164	106,956	-36.0%
Other archaeological sites	4,824,387	4,891,866	2,080,650	2,037,688	-2.1%
II. VISITORS WHO PAID TICKET					
	2023	2024	JANUARY- JUNE		change 2025/2024
			2024	2025	
Total number of visitors who paid ticket (C+D)	13,614,885	14,869,892	6,564,057	6,267,652	-4.5%
C. Museums ⁽²⁾	3,690,912	4,489,241	2,016,040	1,923,644	-4.6%
D. Archaeological sites	9,923,973	10,380,651	4,548,017	4,344,008	-4.5%
III. VISITORS WITH FREE ADMISSION TICKETS					
	2023	2024	JANUARY- JUNE		change 2025/2024
			2024	2025	
Total number of visitors with free admission ticket (E+F)	5,595,867	5,791,965	2,990,201	3,104,615	3.8%
E. Museums	2,110,900	2,162,670	1,127,172	1,213,977	7.7%
F. Archaeological sites	3,484,967	3,629,295	1,863,029	1,890,638	1.5%
IV. RECEIPTS (euros)					
	2023	2024	JANUARY- JUNE		change 2025/2024
			2024	2025	
Total Receipts (G+H) ⁽⁴⁾	157,947,917	171,680,632	75,989,966	106,543,699	40.2%
G. Museums ⁽²⁾	35,712,861	43,688,040	18,902,115	25,679,676	35.9%
H. Archaeological sites	122,235,056	127,992,592	57,087,851	80,864,023	41.6%

⁽¹⁾ Until March 2025, a single ticket is valid for both the museum and the archaeological site.

⁽²⁾ Revised data, due to the transmission of updated data from administrative sources.

⁽³⁾ Since April 2024, it has been possible to purchase tickets online from the museums of Ancient Olympia and Delphi, with the possibility of visiting the corresponding archaeological site, without it being possible to distinguish between museum and archaeological site visits

⁽⁴⁾ Pursuant to the provisions of Joint Ministerial Decision 117624 (Official Journal 1968/issue B/29-03-24), as of 01/04/2025 a new pricing policy to visits to museums and archaeological sites, is in force.

EXPLANATORY NOTES

Survey on Museums and Archaeological Sites Attendance The Survey on Museums and Archaeological Sites Attendance has been producing results since 1970. The survey collects data from the Hellenic Organization of Cultural Resources Development (HOCRED), supervised by the Ministry of Culture, on the number of visitors and the receipts from the tickets sold in the Museums and Archaeological sites of the country.

The corresponding data for the Acropolis Museum is available from December 2009 onwards.

Pursuant to the provisions of Joint Ministerial Decision 117624 (Official Journal 1968/issue B/29-03-24), as 01/04/2025 a new pricing policy shall apply to visits to museums and archaeological sites.

Legal Framework The survey is conducted since 1970 on a regular basis and it produces results on a monthly and yearly basis, in compliance with the Joint Ministerial Decision 15189/B379/73.

Reference Period 01/06/2025 - 30/06/2025

Methodology and Definitions The survey is conducted on a monthly basis from data mainly collected from the Hellenic Organization of Cultural Resources Development (HOCRED), supervised by the Ministry of Culture, on the number of visitors and the receipts from the tickets sold in the Museums and Archaeological sites of the Country. ELSTAT tabulates and presents the data for the whole of the Country, by month and by year.

Since April 2025, pursuant to the provisions of Ministerial Decision 117624 (Official Journal 1968/issue B/29-03-24), the flat rate ticket for museums and archaeological sites applies only for Ancient Olympia and Nemea.

References More information on the Survey on Museums and Archaeological Sites Attendance and detailed time series are available on: <http://www.statistics.gr/en/statistics/-/publication/SCI21/->