



**HELLENIC REPUBLIC**  
**HELLENIC STATISTICAL AUTHORITY**

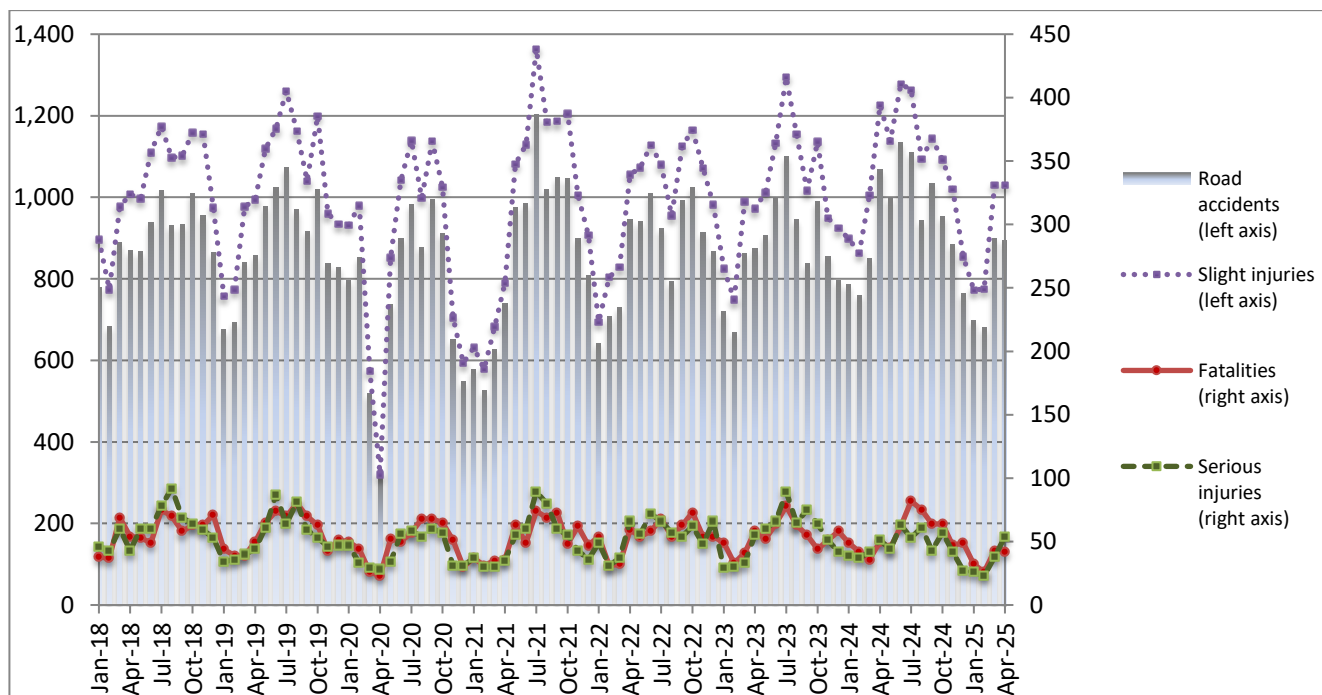
Piraeus, 30 June 2025

## ROAD TRAFFIC ACCIDENTS: April 2025

The Hellenic Statistical Authority (ELSTAT) announces provisional<sup>1</sup> data from the survey on “Road Traffic Accidents” for April 2025. In particular, the road traffic accidents which occurred in Greece, resulting in death or injury, decreased by 16.2% in comparison with the corresponding month of 2024 (895 road accidents in April 2025, against 1,068 road accidents in April 2024).

The casualties of the injury-causing accidents that occurred in April 2025 were as follows: 42 deaths, 54 serious injuries and 1,030 slight injuries. In April 2024 the corresponding figures were: 50 deaths, 51 serious injuries and 1,226 slight injuries. Therefore, road traffic accident casualties in April 2025 decreased by 16.0% for deaths and for slight injuries and increased by 5.9% for serious injuries.

**Graph 1: Road traffic accidents and casualties,  
January 2018 - April 2025**



Provisional data for the period May 2024 – April 2025

**Information on methodological issues:**

Sectoral Statistics Division  
Transport Statistics Section  
M. Kloumpas  
Tel: +30 213 135 3095  
e-mail: [m.kloumpas@statistics.gr](mailto:m.kloumpas@statistics.gr)

**Information for data provision:**

Tel: +30 213 135 222, 2308, 2310  
e-mail: [data.dissem@statistics.gr](mailto:data.dissem@statistics.gr)

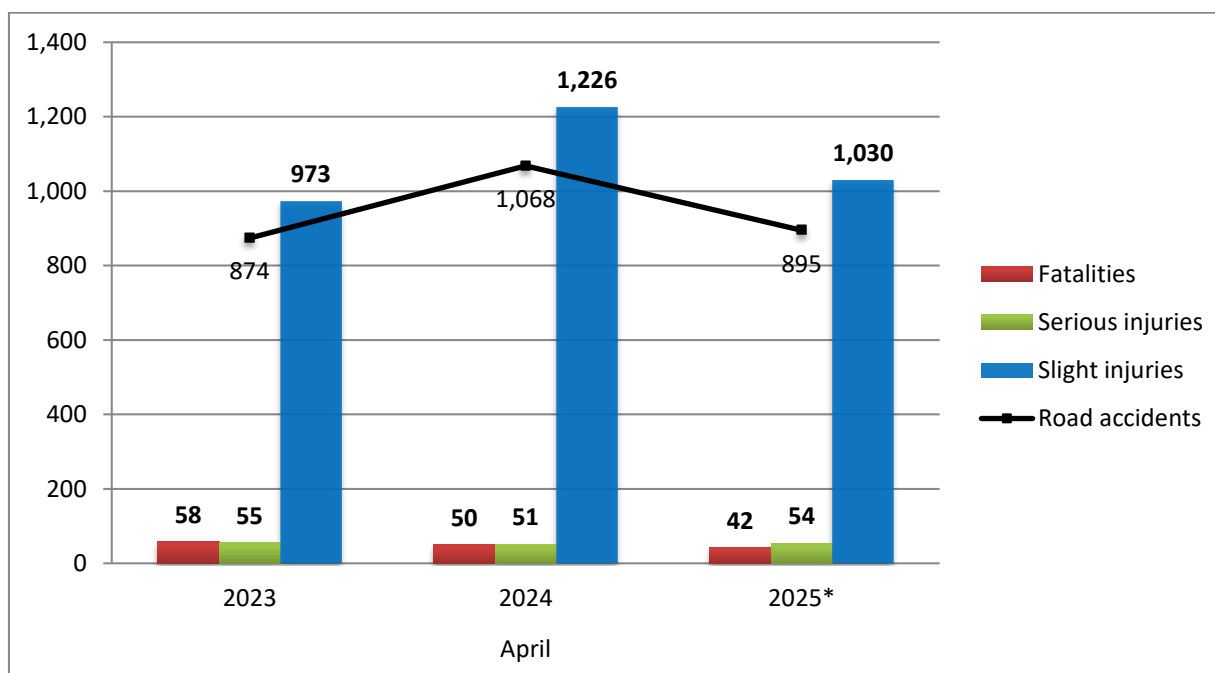
<sup>[1]</sup> Data for the reference year is provisional until the finalization of the annual data, which takes place 12 months after the end of the reference year and is published in the corresponding announcement of the following year. During these 12 months the provisional data is updated on the basis of the data of the Road Accident Forms of that year which is transmitted to ELSTAT by Police Authorities (see explanatory notes).

**Table 1: Road traffic accidents and casualties, April 2023 - 2025\***

	April				
	2023	2024	2024/2023 (%)	2025*	2025*/2024 (%)
<b>Road accidents</b>	<b>874</b>	<b>1,068</b>	22.2	<b>895</b>	-16.2
<b>Fatalities</b>	<b>58</b>	<b>50</b>	-13.8	<b>42</b>	-16.0
<b>Total injuries</b>	<b>1,028</b>	<b>1,277</b>	24.2	<b>1,084</b>	-15.1
Serious injuries	55	51	-7.3	54	5.9
Slight injuries	973	1,226	26.0	1,030	-16.0

\* Provisional data

**Graph 2: Road traffic accidents and casualties, April 2023 - 2025\***



\* Provisional data

Table 2: Road traffic accidents and casualties, by region and department, April 2024 and 2025\*

Region and Department	Road accidents			Fatalities			Serious injuries			Slight injuries		
	2024	2025*	%	2024	2025*	%	2024	2025*	%	2024	2025*	%
<b>Greece total</b>	<b>1,068</b>	<b>895</b>	<b>-16.2</b>	<b>50</b>	<b>42</b>	<b>-16.0</b>	<b>51</b>	<b>54</b>	<b>5.9</b>	<b>1,226</b>	<b>1,030</b>	<b>-16.0</b>
<b>Anatoliki Makedonia and Thraki (East Macedonia and Thrace)</b>	<b>24</b>	<b>14</b>	<b>-41.7</b>	<b>2</b>	<b>1</b>	<b>-50.0</b>	<b>2</b>	<b>2</b>	<b>0.0</b>	<b>29</b>	<b>16</b>	<b>-44.8</b>
Drama	6	4	-33.3	0	0		1	1		5	5	
Evros	8	4	-50.0	0	0		0	0		9	5	
Kavala	3	2	-33.3	1	1		0	1		3	2	
Xanthi	4	2	-50.0	1	0		1	0		9	2	
Rodopi	3	2	-33.3	0	0		0	0		3	2	
<b>Kentriki Makedonia (Central Macedonia)</b>	<b>248</b>	<b>198</b>	<b>-20.2</b>	<b>11</b>	<b>8</b>	<b>-27.3</b>	<b>2</b>	<b>11</b>	<b>450.0</b>	<b>287</b>	<b>237</b>	<b>-17.4</b>
Imathia	6	2	-66.7	4	2		0	0		6	3	
Thessaloniki	215	171	-20.5	1	1		0	7		252	211	
Kilkis	3	6	100.0	0	1		0	0		3	5	
Pella	4	4	0.0	3	1		0	0		2	5	
Pieria	1	5	400.0	1	1		0	1		0	6	
Serres	6	6	0.0	2	1		1	2		5	4	
Chalkidiki	13	4	-69.2	0	1		1	1		19	3	
<b>Dytiki Makedonia (West Macedonia)</b>	<b>2</b>	<b>1</b>	<b>-50.0</b>	<b>0</b>	<b>0</b>	<b>-</b>	<b>1</b>	<b>1</b>	<b>0.0</b>	<b>1</b>	<b>0</b>	<b>-100.0</b>
Grevena	0	0	-	0	0		0	0		0	0	
Kastoria	0	0	-	0	0		0	0		0	0	
Kozani	1	0	-100.0	0	0		0	0		1	0	
Florina	1	1	0.0	0	0		1	1		0	0	
<b>Ipeiros (Epirus)</b>	<b>12</b>	<b>12</b>	<b>0.0</b>	<b>1</b>	<b>1</b>	<b>0.0</b>	<b>2</b>	<b>0</b>	<b>-100.0</b>	<b>14</b>	<b>15</b>	<b>7.1</b>
Arta	2	0	-100.0	0	0		0	0		3	0	
Thesprotia	1	1	0.0	0	0		0	0		1	1	
Ioannina	6	7	16.7	1	0		2	0		6	9	
Preveza	3	4	33.3	0	1		0	0		4	5	
<b>Thessalia (Thessaly)</b>	<b>20</b>	<b>22</b>	<b>10.0</b>	<b>2</b>	<b>4</b>	<b>100.0</b>	<b>2</b>	<b>5</b>	<b>150.0</b>	<b>23</b>	<b>29</b>	<b>26.1</b>
Karditsa	5	4	-20.0	0	1		0	1		7	6	
Larissa	8	5	-37.5	1	0		2	1		8	7	
Magnissia	4	9	125.0	1	3		0	1		5	8	
Trikala	3	4	33.3	0	0		0	2		3	8	
<b>Ionian Islands (Ionian Islands)</b>	<b>17</b>	<b>10</b>	<b>-41.2</b>	<b>1</b>	<b>3</b>	<b>200.0</b>	<b>1</b>	<b>2</b>	<b>100.0</b>	<b>17</b>	<b>8</b>	<b>-52.9</b>
Zakynthos	13	3	-76.9	1	1		1	1		13	3	
Kerkyra	1	2	100.0	0	1		0	0		1	2	
Kefallinia	1	3	200.0	0	0		0	1		1	2	
Lefkada	2	2	0.0	0	1		0	0		2	1	

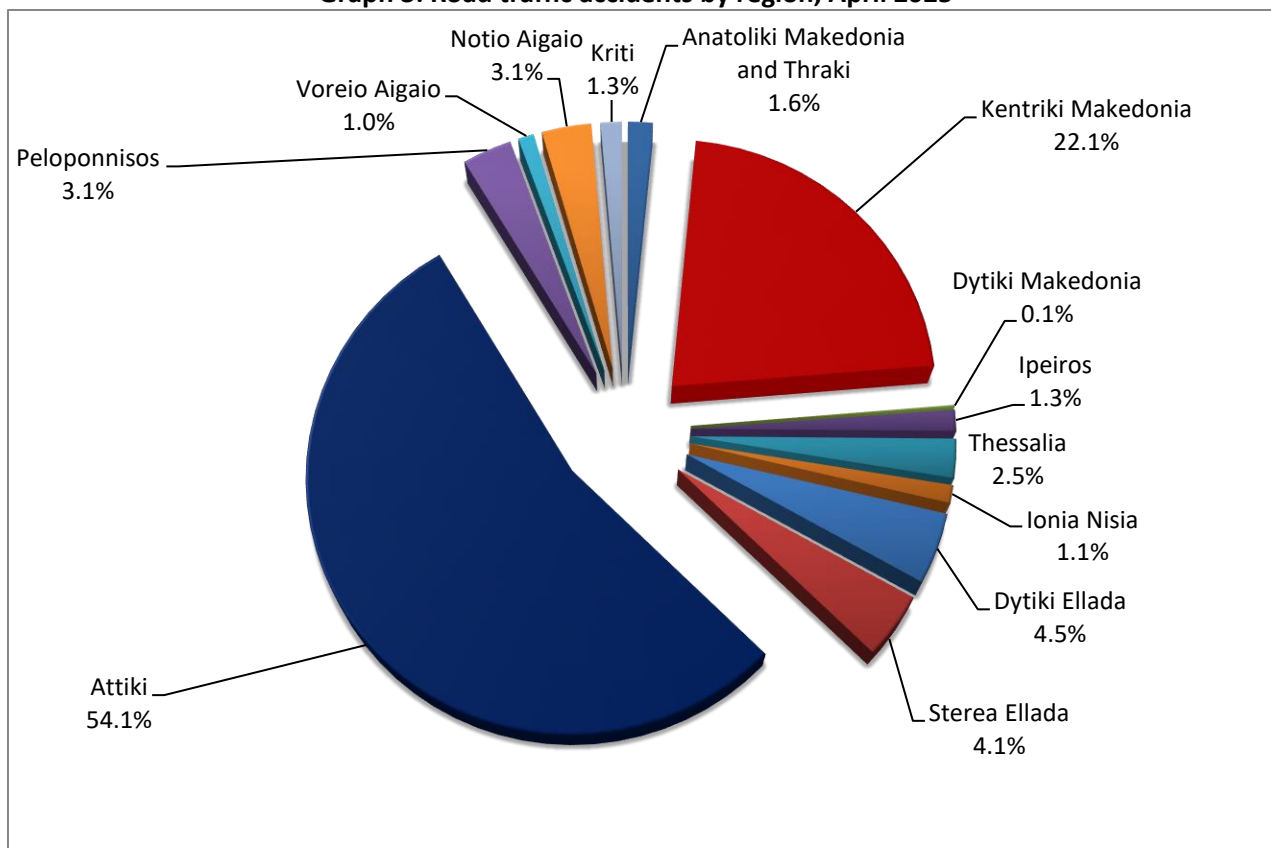
\* Provisional data

**Table 2: Road traffic accidents and casualties, by region and department, April 2024 and 2025\***  
(Continued)

Region and Department	Road accidents			Fatalities			Serious injuries			Slight injuries		
	2024	2025*	%	2024	2025*	%	2024	2025*	%	2024	2025*	%
<b>Dytiki Ellada (West Greece)</b>	<b>29</b>	<b>40</b>	<b>37.9</b>	<b>3</b>	<b>3</b>	<b>0.0</b>	<b>1</b>	<b>3</b>	<b>200.0</b>	<b>39</b>	<b>45</b>	<b>15.4</b>
Etolia & Akarnania	11	20	81.8	1	0		0	2		15	25	
Achaia	10	15	50.0	1	1		1	1		15	17	
Ilia	8	5	-37.5	1	2		0	0		9	3	
<b>Stereia Ellada</b>	<b>39</b>	<b>37</b>	<b>-5.1</b>	<b>1</b>	<b>5</b>	<b>400.0</b>	<b>7</b>	<b>6</b>	<b>-14.3</b>	<b>45</b>	<b>40</b>	<b>-11.1</b>
Viotia	6	4	-33.3	0	0		1	0		5	4	
Evia	27	20	-25.9	1	2		2	4		34	23	
Evrytania	0	0	-	0	0		0	0		0	0	
Fthiotida	5	8	60.0	0	1		2	0		6	11	
Fokida	1	5	400.0	0	2		2	2		0	2	
<b>Attiki (Attica)</b>	<b>583</b>	<b>484</b>	<b>-17.0</b>	<b>15</b>	<b>9</b>	<b>-40.0</b>	<b>14</b>	<b>14</b>	<b>0.0</b>	<b>680</b>	<b>555</b>	<b>-18.4</b>
<b>Peloponnisos (Peloponnese)</b>	<b>33</b>	<b>28</b>	<b>-15.2</b>	<b>4</b>	<b>3</b>	<b>-25.0</b>	<b>2</b>	<b>4</b>	<b>100.0</b>	<b>32</b>	<b>29</b>	<b>-9.4</b>
Argolida	6	1	-83.3	2	0		1	0		5	2	
Arkadia	2	3	50.0	0	1		0	2		2	5	
Korinthia	16	9	-43.8	2	0		1	0		14	9	
Lakonia	1	9	800.0	0	0		0	0		1	11	
Messinia	8	6	-25.0	0	2		0	2		10	2	
<b>Voreio Aigaio (North Aegean)</b>	<b>12</b>	<b>9</b>	<b>-25.0</b>	<b>2</b>	<b>0</b>	<b>-100.0</b>	<b>2</b>	<b>0</b>	<b>-100.0</b>	<b>16</b>	<b>13</b>	<b>-18.8</b>
Lesvos	7	5	-28.6	1	0		2	0		12	8	
Samos	4	2	-50.0	0	0		0	0		4	3	
Chios	1	2	100.0	1	0		0	0		0	2	
<b>Notio Aigaio (South Aegean)</b>	<b>27</b>	<b>28</b>	<b>3.7</b>	<b>1</b>	<b>3</b>	<b>200.0</b>	<b>6</b>	<b>5</b>	<b>-16.7</b>	<b>30</b>	<b>31</b>	<b>3.3</b>
Dodekanissos	15	23	53.3	0	3		4	5		14	24	
Kyklades	12	5	-58.3	1	0		2	0		16	7	
<b>Kriti (Crete)</b>	<b>22</b>	<b>12</b>	<b>-45.5</b>	<b>7</b>	<b>2</b>	<b>-71.4</b>	<b>9</b>	<b>1</b>	<b>-88.9</b>	<b>13</b>	<b>12</b>	<b>-7.7</b>
Iraklio	14	4	-71.4	4	1		5	0		9	3	
Lassithi	0	2	-	0	1		0	0		0	3	
Rethymno	2	1	-50.0	0	0		0	0		2	1	
Chania	6	5	-16.7	3	0		4	1		2	5	

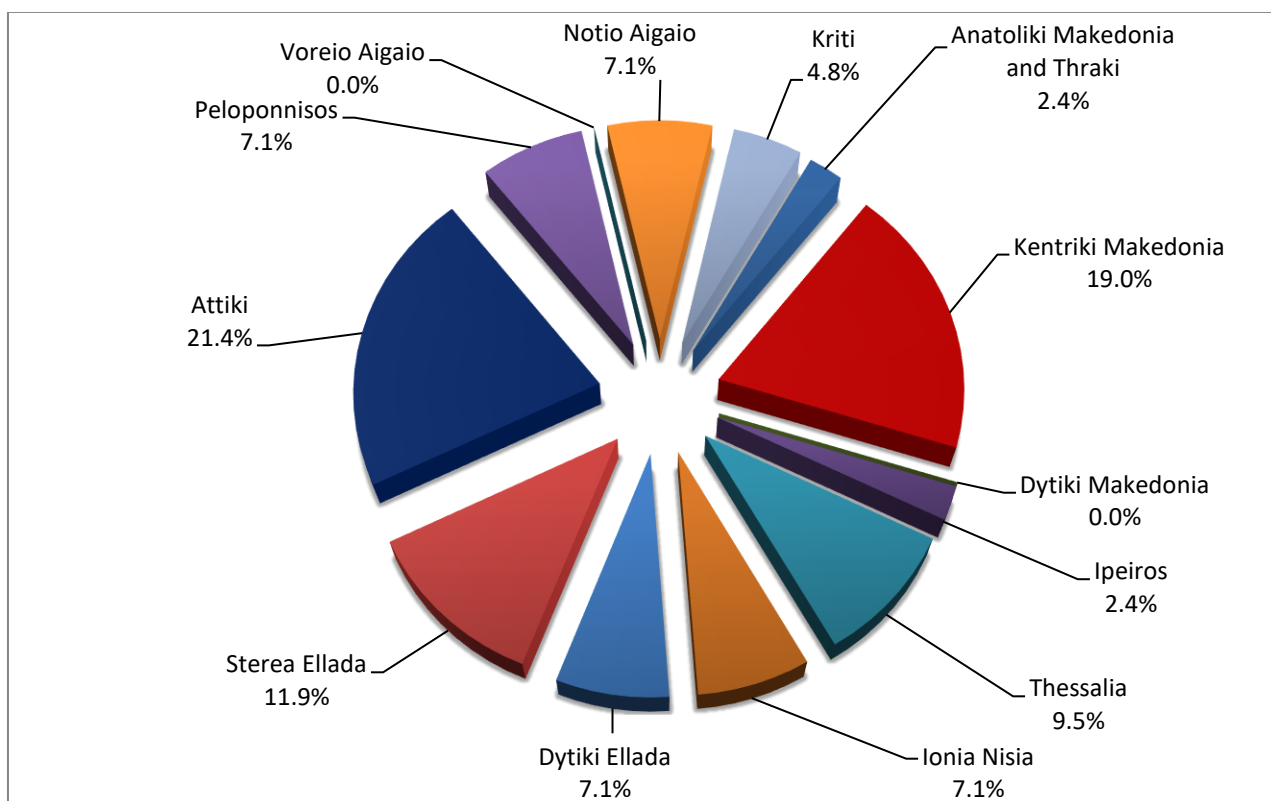
\* Provisional data

**Graph 3: Road traffic accidents by region, April 2025 \***



\* Provisional data

**Graph 4: Fatalities by region, April 2025 \***

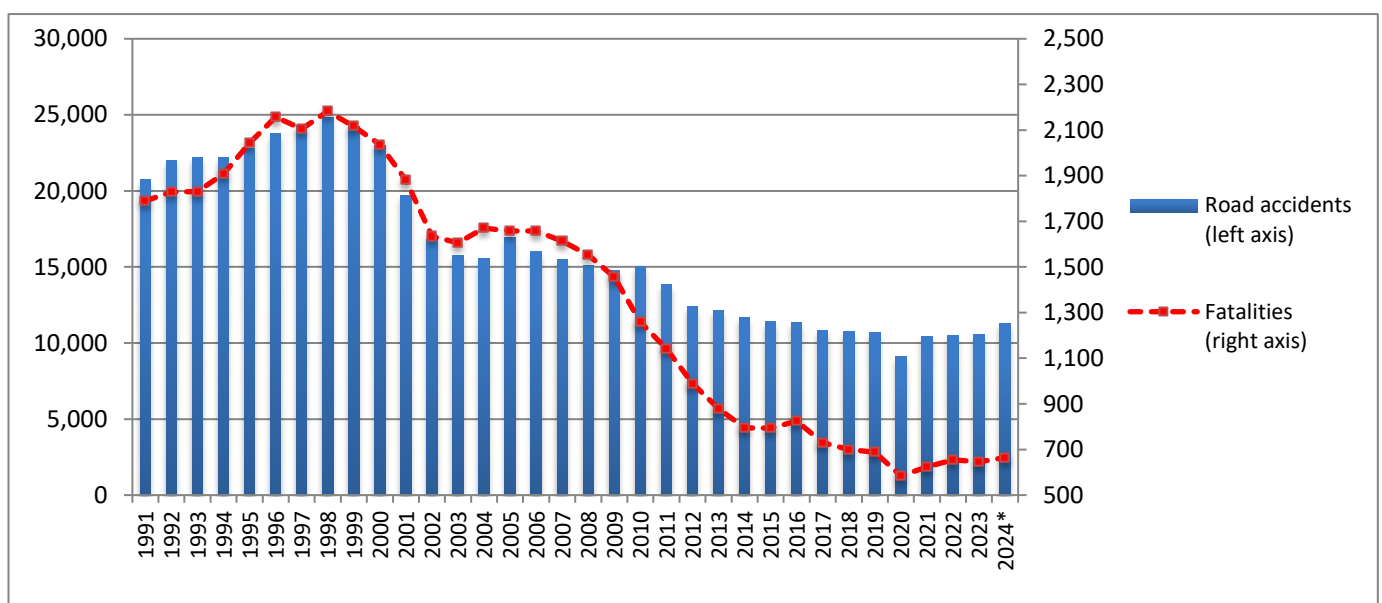


\* Provisional data

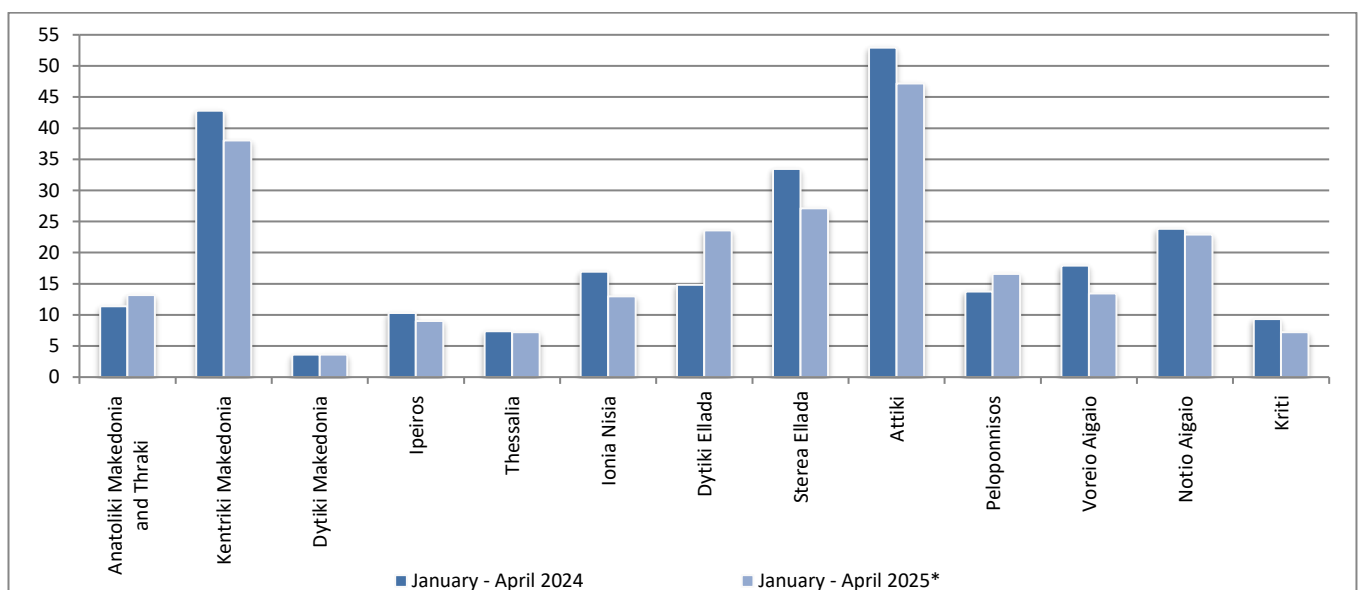
**Table 3: Road traffic accidents and casualties for the period January - April 2023, 2024 and 2025\***

	2023		2024		2025*
	January - April	Total year	January - April	Total year*	January - April
<b>Road Accidents</b>	3,125	<b>10,553</b>	3,464	<b>11,287</b>	3,172
<i>Annual Change (%)</i>			10.8	7.0	-8.4
<b>Fatalities</b>	181	<b>646</b>	177	<b>665</b>	143
<i>Annual Change (%)</i>			-2.2	2.9	-19.2
<b>Serious injuries</b>	147	<b>659</b>	169	<b>559</b>	141
<i>Annual Change (%)</i>			15.0	-15.2	-16.6
<b>Slight injuries</b>	3,536	<b>12,156</b>	3,993	<b>12,878</b>	3,608
<i>Annual Change (%)</i>			12.9	5.9	-9.6

**Graph 5: Total road traffic accidents and fatalities, 1991-2024\***

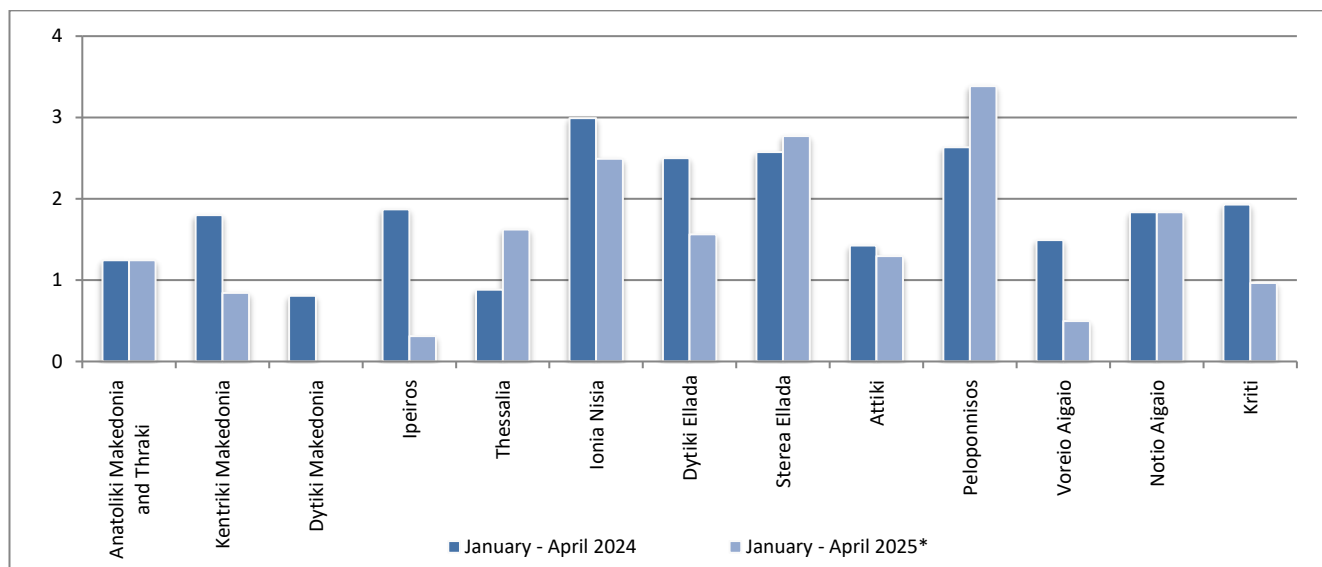


**Graph 6: Road traffic accidents per 100,000 inhabitants, for the period January - April 2024 and 2025\***

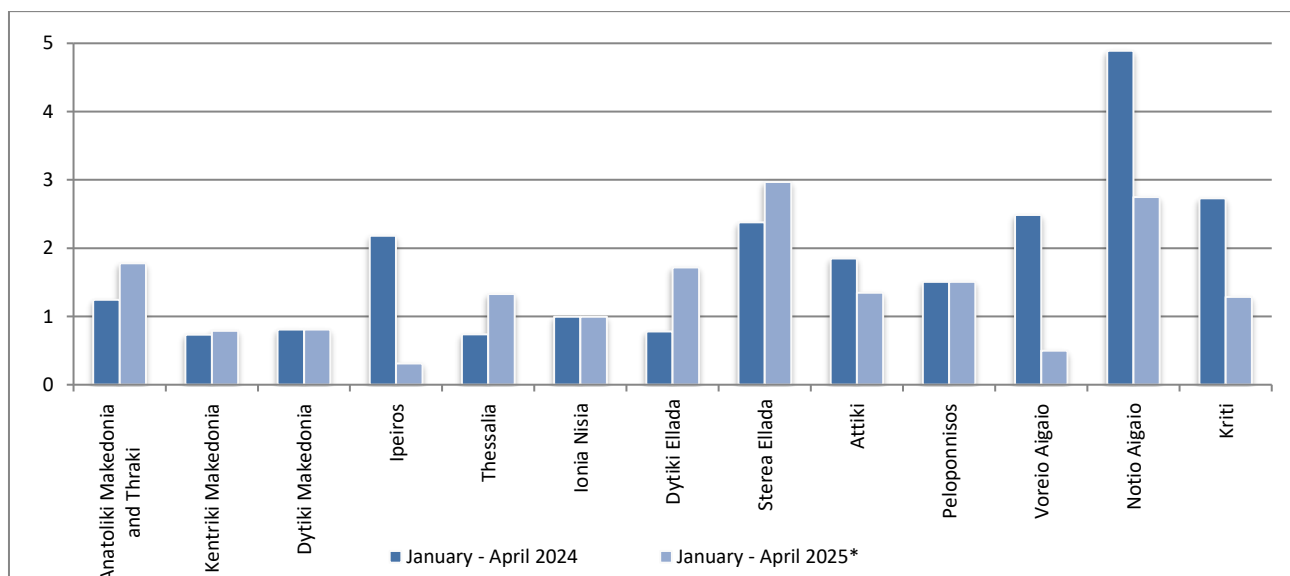


\* Provisional data

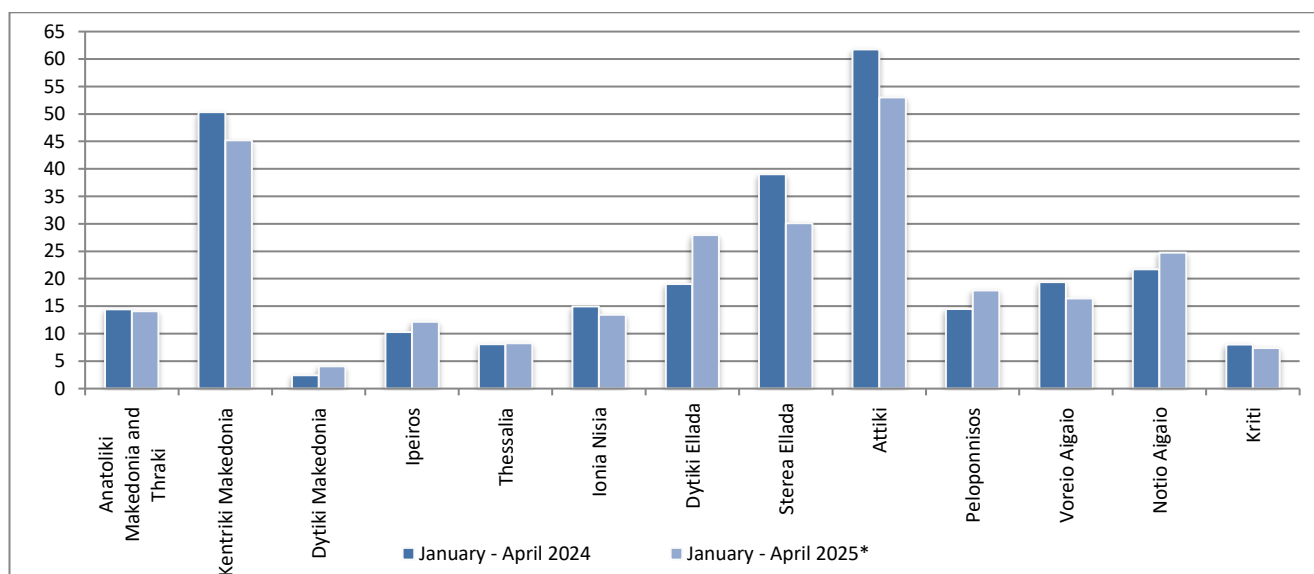
**Graph 7: Fatalities per 100,000 inhabitants, for the period January - April 2024 and 2025\***



**Graph 8: Serious injuries per 100,000 inhabitants, for the period January - April 2024 and 2025\***



**Graph 9: Slight injuries per 100,000 inhabitants, for the period January - April 2024 and 2025\***



\* Provisional data

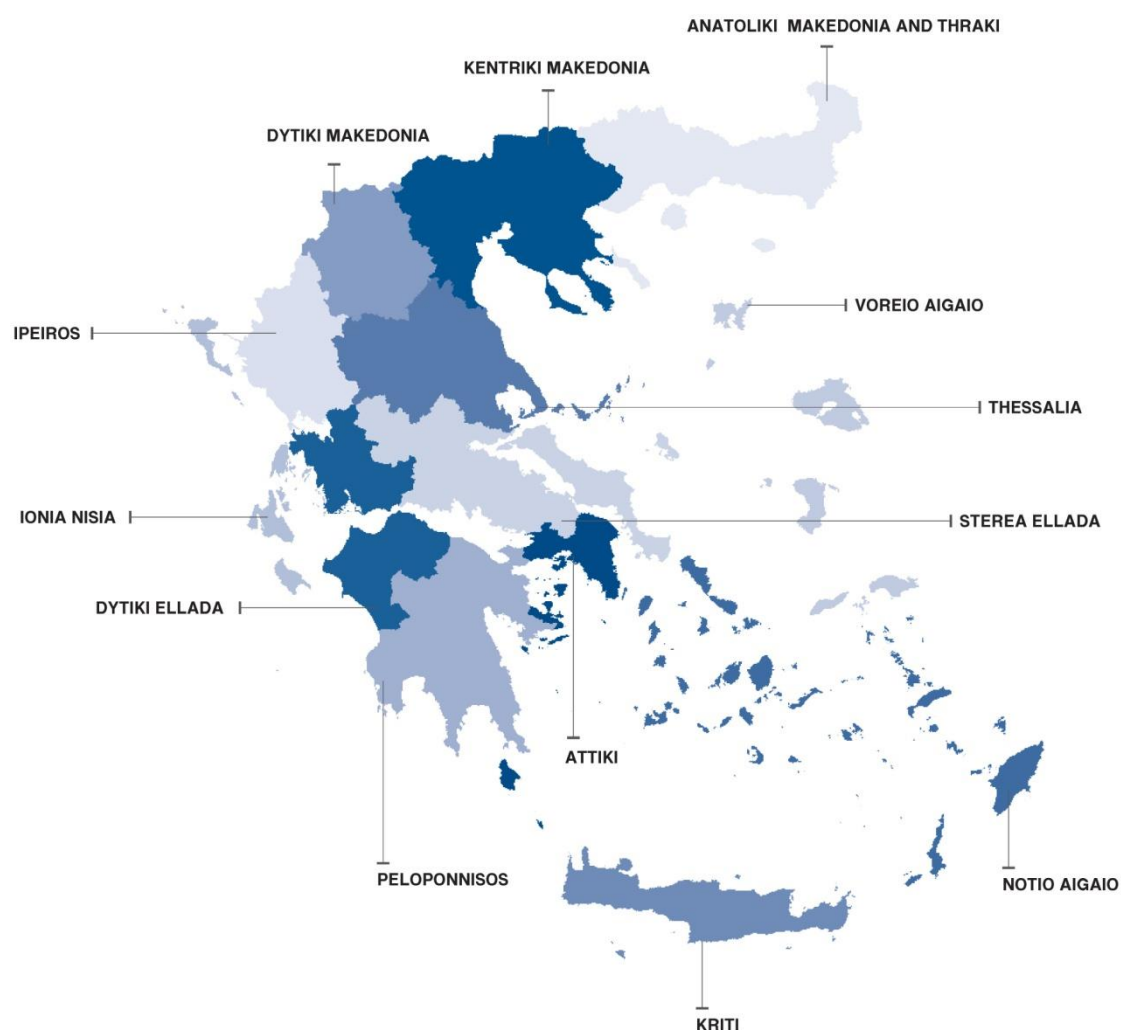
## EXPLANATORY NOTES

### Survey on Road Traffic Accidents

The Survey on Road Traffic Accidents is conducted on a monthly basis and it records, for each region (see map) and department of Greece and for each month separately, the number of accidents resulting in death or injury, as well as the number of persons injured by categories (drivers, passengers, pedestrians).

On a yearly basis, road traffic accidents are further analyzed. The competent agencies for filling in/collecting the forms on road accidents are the local Police Authorities and the local Port Authorities of Greece.

The lower level of analysis for the place where an injury road accident occurred is the settlement. Data are collected on a monthly basis. The main variables are the following: place of accident, kind of road, casualties, conditions of road surface and type of road.



### Legal basis

The Survey on Road Traffic Accidents is governed by Council Decision 93/704 of the European Community.

### Reference period

Monthly.

### Availability of data

Provisional data are available 2 months after the reference month.  
Final data are available 14 months after the reference year.

**Definitions** **Road accident** (injury accident): Any accident involving at least one road motor vehicle in motion on a public road or square to which the public has access (excluding yards, industrial sites or vehicle depot of public transport enterprises), resulting in at least one injured or killed person. Accidents with only material damages are not included.

**Fatality (Death):** Any person killed immediately or dying within 30 days as a result of an injury accident (This national definition applies since 01.01.1996)

**Person injured:** Any person who sustained an injury as result of an injury accident, and who normally needs medical treatment.

**Serious injury:** Any person who sustained an injury as result of an injury accident, such as brain damages, mutilation, multiple injuries, which may result in lack of awareness or which are life-threatening.

**Slight injury:** Any person injured who sustained minor and not life-threatening injuries.

**Vehicle:** Include motor vehicles, trolleybuses, motorcycles, bicycles, motorbikes, agricultural and road making machines, animal and hand-drawn vehicles. Railway vehicles are excluded, unless the road accident involves at least one of the aforementioned types of vehicles and therefore, railway vehicles are considered vehicles.

**Methodology** The forms of the survey are filled in by the local Police Authorities and the local Port Authorities as well.

**References** More information about Road Traffic Accidents is available on ELSTAT's website and more specifically at the link: <https://www.statistics.gr/en/statistics/-/publication/SDT03/>.