



INDUSTRIAL PRODUCTION INDEX: June 2025, y-o-y increase of 0.5%

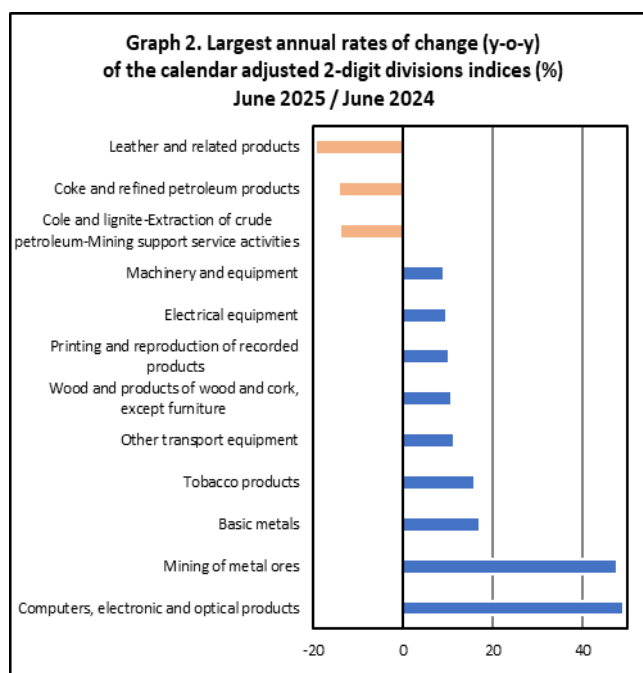
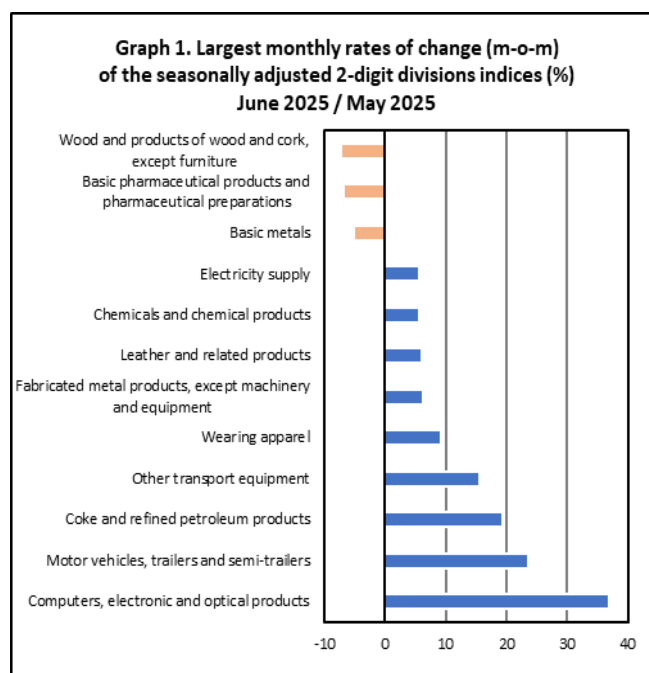
The Hellenic Statistical Authority announces the Industrial Production Index (IPI) with base year 2015=100.0 for June 2025, the evolution of which, on the basis of provisional and working day adjusted data, is as follows:

The Overall Industrial Production Index in June 2025 recorded an increase of 0.5% compared with June 2024. The Overall IPI in June 2024 increased by 9.7% compared with the corresponding index in June 2023 (Table 1).

The average Overall Industrial Production Index for the period from January to June 2025 recorded an increase of 0.3% compared with the average IPI of the period from January to June 2024 (Table 2).

The seasonally adjusted Overall Industrial Production Index in June 2025 recorded a decrease of 0.3% compared with the corresponding index of May 2025 (Table 4).

The index of computers, electronics and optical products division showed the greatest percentage increase, whereas the index of wood and products of wood and cork division recorded the greatest percentage decrease in June 2025 compared with May 2025. Comparing the indices of June 2025 with the corresponding indices of June 2024, the greatest percentage increase was recorded in computers, electronics and optical products division, while the highest percentage decrease was recorded in leather and related products divisions (Tables 1 and 4).



Information on methodological issues:

Business Statistics Division
Manufacture-Construction Indices and Industrial Products Section
Head of the Section: Vlachokosta Evridiki
Tel: +30 213 135 2056
E-mail: e.vlachokosta@statistics.gr

Information on data provision:

Tel: +30 213 135 2024, 2308, 2310
E-mail: data.dissem@statistics.gr

Evolution of the Industrial Production Index in June 2025

I. Annual changes: June 2025 / June 2024 (Table 1)

The 0.5% increase of the working day adjusted Overall IPI in June 2025, compared with the corresponding index in June 2024, is due to the annual changes of the sub-indices in the following industrial sections:

Increase of:

- 16.2% in the Mining and Quarrying Index. The increase was the result of the annual changes of the sub-indices in the following 2-digit divisions: mining of metal ores, other mining and quarrying.
- 2.4% in the Manufacturing Index. The increase was mainly the result of the annual changes of the sub-indices in the following 2-digit divisions: computers, electronics and optical products, basic metals, tobacco products, other transport equipment, wood and products of wood and cork, except furniture.

Decrease of:

- 3.0% in the Water Supply Index.
- 7.2% in the Electricity Supply Index.

II. Rates of change of the average index of the period January - June 2025 compared with the corresponding index of the period January - June 2024 (Table 2)

The 0.3% increase of the working day adjusted average Overall IPI in the 6-month period January - June 2025, compared with the corresponding index in January - June 2024, is due to the corresponding rates of change of the sub-indices in the following industrial sections:

Increase of:

- 3.7% in the Mining and Quarrying Index.
- 0.4% in the Manufacturing Index.

Decrease of:

- 0.1% in the Electricity Supply Index.
- 0.1% in the Water Supply Index.

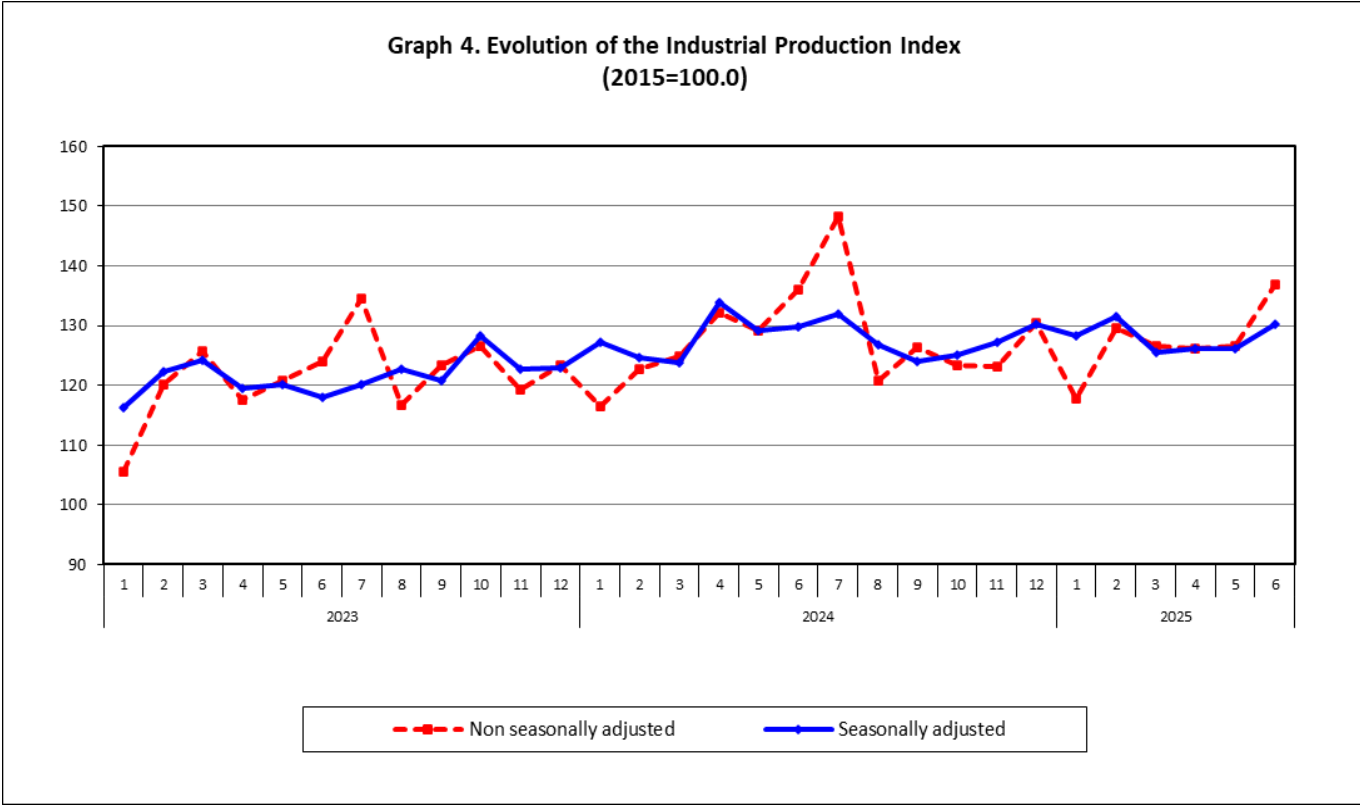
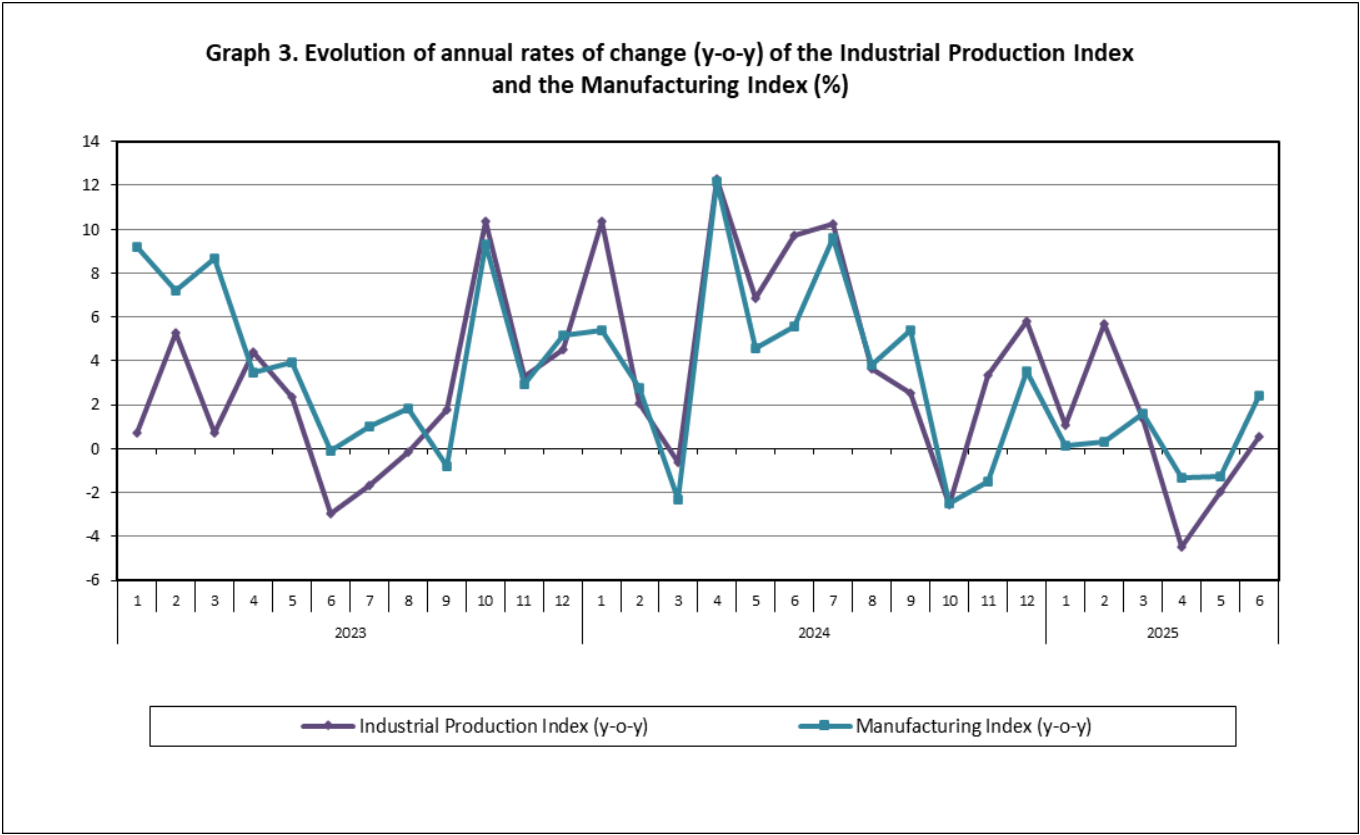
III. Monthly changes: June 2025 / May 2025 (Table 4)

The 3.2% increase of the seasonally adjusted Overall IPI in June 2025, compared with the corresponding index in May 2025, is due to the monthly changes of the sub-indices in the following industrial sections:

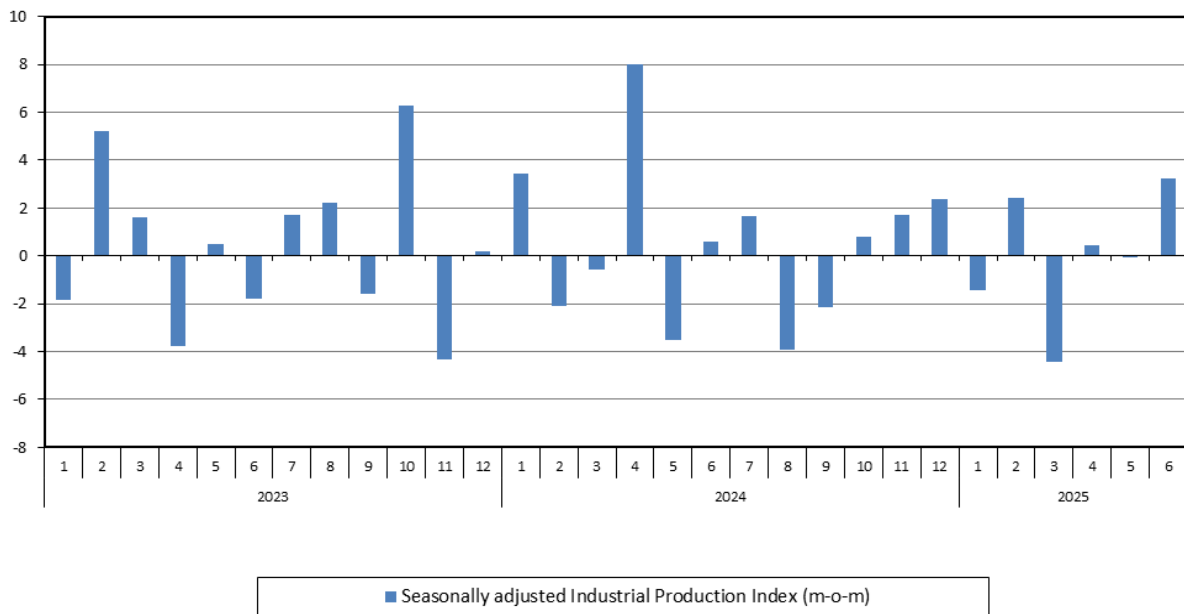
Increase of:

- 5.6% in the Electricity Supply Index.
- 2.4% in the Manufacturing Index.
- 0.5% in the Water Supply Index.
- 0.3% in the Mining and Quarrying Index.

The following graphs depict the annual rates of change (y-o-y) of the Industrial Production Index and the Manufacturing Index, the evolution of the seasonally and non-seasonally adjusted Overall Industrial Production Index, as well as the monthly rates of change (m-o-m) of the seasonally adjusted index.



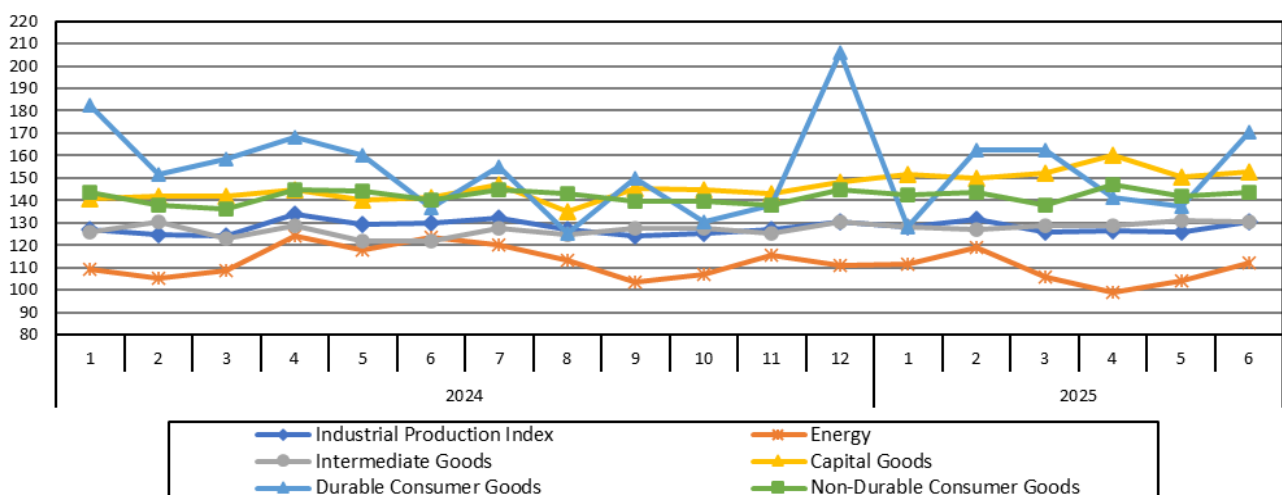
Graph 5. Evolution of the monthly rates of change (m-o-m) of the seasonally adjusted Industrial Production Index (%)



It should be noted that the time series with the seasonally adjusted indices is recalculated every time a new observation is added in the time series. Therefore, the seasonally adjusted data differ from the data published in the previous Announcement.

The following graphs depict the evolution of the seasonally adjusted Industrial Production Index and the Main Industrial Groupings, as well as the evolution of the Industrial Production Index and the Industrial Sections Indices.

Graph 6. Evolution of the seasonally adjusted Industrial Production Index and the Main Industrial Groupings Indices, January 2024 - June 2025 (2015=100.0)



**Graph 7. Evolution of the Industrial Production Index and the Industrial Section Indices
(2015=100.0)**

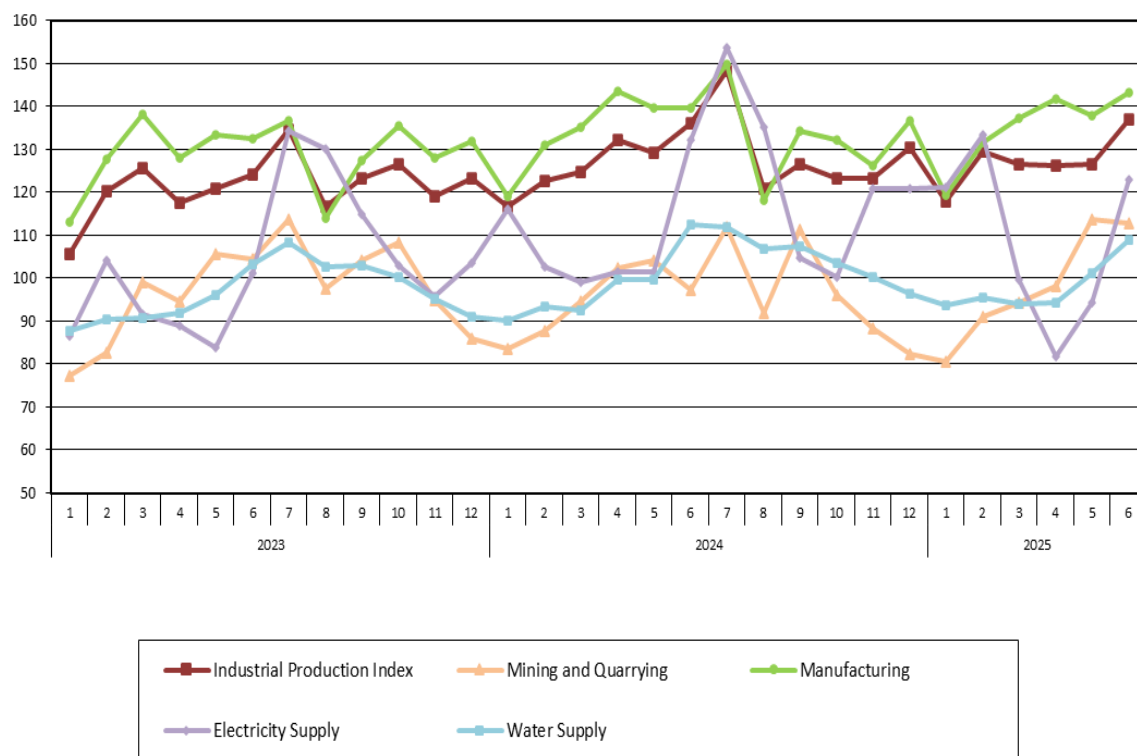


Table 1. Annual rates of change of the Industrial Production Index
(Working day adjusted data, according to the real number of working days)
Base year: 2015=100.0

Code		Division	June			Rate of change (%)	
			2025*	2024*	2023	2025/2024	2024/2023
OVERALL INDEX			136.84	136.13	124.05	0.5	9.7
B	MINING AND QUARRYING		112.91	97.20	104.52	16.2	-7.0
05-06-09	Mining of coal and lignite – Extraction of crude petroleum and natural gas – Mining support service activities		14.66	17.08	22.24	-14.2	-23.2
07	Mining of metal ores		127.12	86.10	111.51	47.6	-22.8
08	Other mining and quarrying		122.47	112.80	114.21	8.6	-1.2
C	MANUFACTURING		143.15	139.75	132.41	2.4	5.5
10	Food		126.74	120.97	117.91	4.8	2.6
11	Beverages		148.87	144.61	131.25	2.9	10.2
12	Tobacco products		218.84	188.65	172.26	16.0	9.5
13	Textiles		120.64	112.98	115.89	6.8	-2.5
14	Wearing apparel		50.61	54.20	66.03	-6.6	-17.9
15	Leather and related products		93.34	115.87	92.15	-19.4	25.7
16	Wood and products of wood and cork, except furniture		111.42	100.63	119.16	10.7	-15.6
17	Paper and paper products		118.71	113.68	112.46	4.4	1.1
18	Printing and reproduction of recorded products		155.11	140.88	138.94	10.1	1.4
19	Coke and refined petroleum products		102.52	119.63	86.36	-14.3	38.5
20	Chemicals and chemical products		154.72	147.42	132.36	4.9	11.4
21	Basic pharmaceutical products and pharmaceutical preparations		256.80	279.96	286.82	-8.3	-2.4
22	Rubber and plastic products		143.45	134.99	136.07	6.3	-0.8
23	Other non-metallic mineral products		151.33	150.04	139.00	0.9	7.9
24	Basic metals		158.93	135.83	137.42	17.0	-1.2
25	Fabricated metal products, except machinery and equipment		164.13	154.05	163.62	6.5	-5.9
26	Computers, electronic and optical products		322.27	216.32	224.26	49.0	-3.5
27	Electrical equipment		168.89	154.15	149.53	9.6	3.1
28	Machinery and equipment n. e. c.		149.88	137.44	141.60	9.0	-2.9
29	Motor vehicles, trailers and semi-trailers		176.97	180.66	191.58	-2.0	-5.7
30	Other transport equipment		90.53	81.36	81.69	11.3	-0.4
31	Furniture		164.83	159.12	188.77	3.6	-15.7
32	Other manufacturing		149.40	152.70	153.47	-2.2	-0.5
33	Repair and installation of machinery and equipment		126.85	125.88	100.17	0.8	25.7
D	ELECTRICITY SUPPLY		122.80	132.31	101.31	-7.2	30.6
35	Electricity supply		122.80	132.31	101.31	-7.2	30.6
E	WATER SUPPLY		109.05	112.37	103.17	-3.0	8.9
36	Water collection, treatment and supply		109.05	112.37	103.17	-3.0	8.9
MAIN INDUSTRIAL GROUPINGS							
1	Energy		114.70	125.99	96.57	-9.0	30.5
2	Intermediate goods		140.98	131.52	129.43	7.2	1.6
3	Capital goods		160.86	149.12	151.32	7.9	-1.5
4	Consumer Durables		212.38	166.18	171.37	27.8	-3.0
5	Consumer Non-Durables		150.23	147.00	143.48	2.2	2.5

* Provisional data

Note: The indices are rounded up to two decimal digits when published and percentage changes up to one decimal digit when published.

Table 2. Average indices of the period January – June and rates of change of the Industrial Production Index
(Working day adjusted data, according to the real number of working days)

Base year: 2015=100.0

Code		Division	Average indices of the period Jan.-June			Rate of change (%)	
			2025*	2024*	2023	2025/2024	2024/2023
OVERALL INDEX			127.28	126.85	119.00	0.3	6.6
B	MINING AND QUARRYING		98.47	94.92	94.03	3.7	0.9
05-06-09	Mining of coal and lignite – Extraction of crude petroleum and natural gas – Mining support service activities		24.06	17.76	24.88	35.5	-28.6
07	Mining of metal ores		113.26	118.31	124.80	-4.3	-5.2
08	Other mining and quarrying		104.32	98.21	93.60	6.2	4.9
C	MANUFACTURING		135.13	134.64	128.82	0.4	4.5
10	Food		122.85	118.90	112.93	3.3	5.3
11	Beverages		112.70	110.77	103.26	1.7	7.3
12	Tobacco products		192.18	162.95	150.53	17.9	8.3
13	Textiles		117.79	109.55	116.72	7.5	-6.1
14	Wearing apparel		57.61	66.07	75.09	-12.8	-12.0
15	Leather and related products		79.97	96.47	105.04	-17.1	-8.2
16	Wood and products of wood and cork, except furniture		112.88	107.05	111.87	5.4	-4.3
17	Paper and paper products		115.59	115.73	115.57	-0.1	0.1
18	Printing and reproduction of recorded products		143.05	140.06	132.71	2.1	5.5
19	Coke and refined petroleum products		99.58	116.40	107.71	-14.4	8.1
20	Chemicals and chemical products		145.43	143.35	130.03	1.5	10.2
21	Basic pharmaceutical products and pharmaceutical preparations		277.80	290.40	284.29	-4.3	2.1
22	Rubber and plastic products		136.57	130.32	130.10	4.8	0.2
23	Other non-metallic mineral products		143.52	144.38	129.52	-0.6	11.5
24	Basic metals		155.64	135.25	134.94	15.1	0.2
25	Fabricated metal products, except machinery and equipment		145.08	142.76	138.13	1.6	3.4
26	Computers, electronic and optical products		246.98	252.33	238.58	-2.1	5.8
27	Electrical equipment		150.23	147.83	140.63	1.6	5.1
28	Machinery and equipment n. e. c.		138.06	127.99	128.85	7.9	-0.7
29	Motor vehicles, trailers and semi-trailers		126.52	141.84	165.13	-10.8	-14.1
30	Other transport equipment		62.63	68.37	63.07	-8.4	8.4
31	Furniture		142.62	151.82	159.05	-6.1	-4.5
32	Other manufacturing		132.07	129.70	131.73	1.8	-1.5
33	Repair and installation of machinery and equipment		124.90	101.96	93.62	22.5	8.9
D	ELECTRICITY SUPPLY		108.80	108.85	92.74	-0.1	17.4
35	Electricity supply		108.80	108.85	92.74	-0.1	17.4
E	WATER SUPPLY		98.02	98.07	93.34	-0.1	5.1
36	Water collection, treatment and supply		98.02	98.07	93.34	-0.1	5.1
MAIN INDUSTRIAL GROUPINGS							
1	Energy		104.61	109.94	97.40	-4.8	12.9
2	Intermediate goods		131.97	128.09	122.87	3.0	4.3
3	Capital goods		148.00	136.52	135.76	8.4	0.6
4	Consumer Durables		154.57	158.88	140.92	-2.7	12.7
5	Consumer Non-Durables		144.18	142.15	136.55	1.4	4.1

* Provisional data

Note: The indices are rounded up to two decimal digits when published and percentage changes up to one decimal digit when published.

Table 3. Monthly rate of change of the Industrial Production Index*(Working day adjusted data, according to the real number of working days)***Base year: 2015=100.0**

Code	Division	June 2025*	May 2025*	Rate of change (%) June 2025/May 2025
OVERALL INDEX		136.84	126.61	8.1
B	MINING AND QUARRYING	112.91	113.61	-0.6
05-06-09	Mining of coal and lignite – Extraction of crude petroleum and natural gas – Mining support service activities	14.66	21.23	-30.9
07	Mining of metal ores	127.12	125.10	1.6
08	Other mining and quarrying	122.47	123.24	-0.6
C	MANUFACTURING	143.15	137.79	3.9
10	Food	126.74	125.78	0.8
11	Beverages	148.87	127.94	16.4
12	Tobacco products	218.84	204.14	7.2
13	Textiles	120.64	131.14	-8.0
14	Wearing apparel	50.61	49.32	2.6
15	Leather and related products	93.34	78.75	18.5
16	Wood and products of wood and cork, except furniture	111.42	124.84	-10.8
17	Paper and paper products	118.71	119.19	-0.4
18	Printing and reproduction of recorded products	155.11	151.67	2.3
19	Coke and refined petroleum products	102.52	86.96	17.9
20	Chemicals and chemical products	154.72	146.15	5.9
21	Basic pharmaceutical products and pharmaceutical preparations	256.80	288.46	-11.0
22	Rubber and plastic products	143.45	136.93	4.8
23	Other non-metallic mineral products	151.33	153.58	-1.5
24	Basic metals	158.93	170.43	-6.7
25	Fabricated metal products, except machinery and equipment	164.13	146.07	12.4
26	Computers, electronic and optical products	322.27	214.89	50.0
27	Electrical equipment	168.89	165.30	2.2
28	Machinery and equipment n. e. c.	149.88	151.15	-0.8
29	Motor vehicles, trailers and semi-trailers	176.97	130.31	35.8
30	Other transport equipment	90.53	74.28	21.9
31	Furniture	164.83	156.60	5.3
32	Other manufacturing	149.40	141.04	5.9
33	Repair and installation of machinery and equipment	126.85	125.12	1.4
D	ELECTRICITY SUPPLY	122.80	94.29	30.2
35	Electricity supply	122.80	94.29	30.2
E	WATER SUPPLY	109.05	101.22	7.7
36	Water collection, treatment and supply	109.05	101.22	7.7
MAIN INDUSTRIAL GROUPINGS				
1	Energy	114.70	92.48	24.0
2	Intermediate goods	140.98	141.00	0.0
3	Capital goods	160.86	151.94	5.9
4	Consumer Durables	212.38	148.08	43.4
5	Consumer Non-Durables	150.23	148.91	0.9

* Provisional data

Note: The indices are rounded up to two decimal digits when published and percentage changes up to one decimal digit when published.

Table 4. Monthly rate of change of the seasonally adjusted Industrial Production Index

Base year: 2015=100.0					
Code		Division	June 2025	May 2025	Rate of change (%) June 2025 / May 2025
OVERALL INDEX			130.16	126.07	3.2
B	MINING AND QUARRYING		102.48	102.16	0.3
05-06-09	Mining of coal and lignite – Extraction of crude petroleum and natural gas – Mining support service activities		-	-	-
07	Mining of metal ores		122.57	118.09	3.8
08	Other mining and quarrying		105.82	107.48	-1.5
C	MANUFACTURING		136.08	132.85	2.4
10	Food		127.36	124.66	2.2
11	Beverages		110.97	109.83	1.0
12	Tobacco products		188.09	185.53	1.4
13	Textiles		115.96	115.46	0.4
14	Wearing apparel		58.46	53.57	9.1
15	Leather and related products		78.61	74.10	6.1
16	Wood and products of wood and cork, except furniture		105.87	114.12	-7.2
17	Paper and paper products		116.39	116.52	-0.1
18	Printing and reproduction of recorded products		146.03	143.23	2.0
19	Coke and refined petroleum products		106.49	89.22	19.4
20	Chemicals and chemical products		141.69	134.14	5.6
21	Basic pharmaceutical products and pharmaceutical preparations		256.25	275.08	-6.8
22	Rubber and plastic products		132.95	130.20	2.1
23	Other non-metallic mineral products		138.70	140.41	-1.2
24	Basic metals		152.73	161.03	-5.2
25	Fabricated metal products, except machinery and equipment		143.17	134.86	6.2
26	Computers, electronic and optical products		316.08	230.75	37.0
27	Electrical equipment		157.01	156.19	0.5
28	Machinery and equipment n. e. c.		137.09	141.84	-3.3
29	Motor vehicles, trailers and semi-trailers		158.46	128.30	23.5
30	Other transport equipment		73.52	63.60	15.6
31	Furniture		139.17	133.89	3.9
32	Other manufacturing		135.99	133.46	1.9
33	Repair and installation of machinery and equipment		128.25	131.60	-2.6
D	ELECTRICITY SUPPLY		119.73	113.36	5.6
35	Electricity supply		119.73	113.36	5.6
E	WATER SUPPLY		100.02	99.56	0.5
36	Water collection, treatment and supply		100.02	99.56	0.5
MAIN INDUSTRIAL GROUPINGS					
1	Energy		112.30	103.89	8.1
2	Intermediate goods		130.54	130.77	-0.2
3	Capital goods		152.96	150.62	1.6
4	Consumer Durables		170.74	137.18	24.5
5	Consumer Non-Durables		143.39	142.17	0.9

Notes:

1. The indices are rounded up to two decimal digits when published and percentage changes up to one decimal digit when published.
2. The whole time-series with seasonally adjusted indices is recalculated every time a new observation is added in the time-series.
3. The composed index of divisions 05-06-09 is not seasonally adjusted.

Table 5. Evolution of the Overall Industrial Production Index
(Working day adjusted data, according to the real number of working days)

Base year: 2015=100.0

Year and month		Overall Index	Monthly rate of change (%)	Annual rate of change (%)	12-month average index (moving average)	Rate of change of the 12-month average index (%)
2023:	1	105.63	-10.5	0.7	118.83	2.5
	2	120.18	13.8	5.3	119.33	2.5
	3	125.66	4.6	0.7	119.41	1.8
	4	117.60	-6.4	4.4	119.82	2.5
	5	120.86	2.8	2.3	120.05	2.4
	6	124.05	2.6	-3.0	119.73	1.3
	7	134.56	8.5	-1.7	119.54	0.5
	8	116.61	-13.3	-0.2	119.53	0.1
	9	123.27	5.7	1.8	119.71	0.4
	10	126.57	2.7	10.3	120.70	1.4
	11	119.19	-5.8	3.3	121.01	1.8
	12	123.30	3.4	4.5	121.46	2.3
Annual average		121.46				
2024*:	1	116.56	-5.5	10.3	122.37	3.0
	2	122.64	5.2	2.1	122.57	2.7
	3	124.87	1.8	-0.6	122.51	2.6
	4	132.08	5.8	12.3	123.71	3.2
	5	129.14	-2.2	6.8	124.40	3.6
	6	136.13	5.4	9.7	125.41	4.7
	7	148.32	9.0	10.2	126.56	5.9
	8	120.85	-18.5	3.6	126.91	6.2
	9	126.42	4.6	2.6	127.17	6.2
	10	123.34	-2.4	-2.6	126.90	5.1
	11	123.15	-0.2	3.3	127.23	5.1
	12	130.42	5.9	5.8	127.83	5.2
Annual average		127.83				
2025*:	1	117.82	-9.7	1.1	127.93	4.5
	2	129.61	10.0	5.7	128.51	4.8
	3	126.60	-2.3	1.4	128.66	5.0
	4	126.20	-0.3	-4.5	128.17	3.6
	5	126.61	0.3	-2.0	127.96	2.9
	6	136.84	8.1	0.5	128.02	2.1

* Provisional data

Note: The indices are rounded up to two decimal digits when published and percentage changes up to one decimal digit when published.

Table 6. Monthly evolution of the seasonally adjusted Overall Industrial Production Index and Main Industrial Groupings

Base year: 2015=100.0

Year and month		Overall Index		Energy		Intermediate goods		Capital goods		Consumer durables		Consumer non-durables	
		Index	Monthly rate of change (%)	Index	Monthly rate of change (%)	Index	Monthly rate of change (%)	Index	Monthly rate of change (%)	Index	Monthly rate of change (%)	Index	Monthly rate of change (%)
2023:	1	116.22	-1.8	91.43	-9.7	120.49	0.4	142.45	6.2	140.62	-8.7	134.69	2.1
	2	122.26	5.2	107.30	17.4	118.41	-1.7	143.78	0.9	141.02	0.3	136.70	1.5
	3	124.24	1.6	106.88	-0.4	124.13	4.8	142.39	-1.0	139.14	-1.3	139.75	2.2
	4	119.57	-3.8	109.95	2.9	118.25	-4.7	129.67	-8.9	141.92	2.0	128.42	-8.1
	5	120.19	0.5	100.15	-8.9	119.77	1.3	147.26	13.6	143.22	0.9	136.42	6.2
	6	118.05	-1.8	95.15	-5.0	119.69	-0.1	142.81	-3.0	142.69	-0.4	136.66	0.2
	7	120.06	1.7	108.17	13.7	115.79	-3.3	132.36	-7.3	143.21	0.4	133.32	-2.4
	8	122.74	2.2	109.56	1.3	119.31	3.0	146.09	10.4	142.89	-0.2	134.13	0.6
	9	120.80	-1.6	110.83	1.2	114.22	-4.3	138.54	-5.2	153.29	7.3	131.62	-1.9
	10	128.35	6.3	112.89	1.9	123.80	8.4	146.02	5.4	162.53	6.0	144.17	9.5
	11	122.78	-4.3	104.32	-7.6	122.25	-1.3	149.00	2.0	168.03	3.4	136.28	-5.5
	12	123.02	0.2	102.79	-1.5	126.52	3.5	151.41	1.6	160.42	-4.5	135.35	-0.7
Annual average		121.52		104.95		120.22		142.65		148.25		135.63	
2024:	1	127.25	3.4	109.15	6.2	126.02	-0.4	140.84	-7.0	182.77	13.9	143.68	6.2
	2	124.60	-2.1	105.17	-3.6	130.29	3.4	141.68	0.6	151.61	-17.0	137.79	-4.1
	3	123.89	-0.6	108.94	3.6	123.20	-5.4	141.81	0.1	158.65	4.6	135.99	-1.3
	4	133.80	8.0	124.37	14.2	128.68	4.4	144.76	2.1	168.37	6.1	144.51	6.3
	5	129.07	-3.5	117.57	-5.5	121.99	-5.2	139.98	-3.3	160.50	-4.7	143.97	-0.4
	6	129.84	0.6	123.62	5.1	121.76	-0.2	141.46	1.1	136.57	-14.9	140.20	-2.6
	7	132.01	1.7	119.99	-2.9	127.40	4.6	146.96	3.9	155.21	13.6	145.00	3.4
	8	126.83	-3.9	113.07	-5.8	124.48	-2.3	134.89	-8.2	125.36	-19.2	143.22	-1.2
	9	124.11	-2.1	103.61	-8.4	127.52	2.4	145.18	7.6	149.90	19.6	139.36	-2.7
	10	125.09	0.8	106.84	3.1	127.73	0.2	144.82	-0.3	130.33	-13.1	139.62	0.2
	11	127.20	1.7	115.53	8.1	125.48	-1.8	142.81	-1.4	137.65	5.6	138.01	-1.2
	12	130.20	2.4	110.99	-3.9	130.38	3.9	148.45	4.0	205.83	49.5	144.63	4.8
Annual average		127.82		113.24		126.24		142.80		155.23		141.33	
2025:	1	128.33	-1.4	111.54	0.5	128.12	-1.7	151.89	2.3	128.26	-37.7	142.57	-1.4
	2	131.41	2.4	118.94	6.6	127.04	-0.8	149.80	-1.4	162.48	26.7	143.46	0.6
	3	125.60	-4.4	105.99	-10.9	128.49	1.1	152.23	1.6	162.42	0.0	138.17	-3.7
	4	126.16	0.4	98.94	-6.7	128.84	0.3	160.27	5.3	141.36	-13.0	147.22	6.5
	5	126.07	-0.1	103.89	5.0	130.77	1.5	150.62	-6.0	137.18	-3.0	142.17	-3.4
	6	130.16	3.2	112.30	8.1	130.54	-0.2	152.96	1.6	170.74	24.5	143.39	0.9

Notes:

1. The indices are rounded up to two decimal digits when published and percentage changes up to one decimal digit when published.
2. The whole time-series with seasonally adjusted indices is recalculated every time a new observation is added in the time-series.

METHODOLOGICAL NOTES

Generally	The Industrial Production Index (IPI) in Greece has been compiled by the Hellenic Statistical Authority (ELSTAT) from 1959 onwards.
Purpose of the index	The objective of the index is to compare the magnitude (volume) of the output in the current month in the mining and quarrying, manufacturing, electricity and water supply divisions with the corresponding output of a given fixed period, which is considered as base period. The Industrial Production Index shows the evolution of the value added of the production factors cost, at constant prices.
Legal framework	The compilation of the IPI is based on the framework of the implementation of Council Regulation (EC) No 1165/1998 concerning short-term statistics (STS-R). Furthermore, the IPI is governed by Regulation (EC) No 1893/2006 of the European Parliament and of the Council, by Commission Regulation (EC) No 656/2007, by Council Regulation (EC) No 451/2008, by Regulation (EU) No 2019/2152 of the European Parliament and of the Council on European business statistics, as well as Commission Implementing Regulation (EU) No 2020/1197 laying down technical specifications and arrangements pursuant to Regulation (EU) No 2019/2152.
Reference period	Month.
Base year	2015=100.0.
Revision	The IPI is a fixed base index. The Industrial Production Index was currently revised with new base year 2015 (2015=100.0) according to the provisions of Council Regulation No 1165/1998 concerning short-term statistics. Short-term indices are revised every five (5) years, particularly in calendar years ending in 0 or 5.
Statistical classifications	At the level of branches of economic activities, the statistical classification of economic activities NACE Rev.2 of EU was used (Regulation No 1893/2006), while at the level of main industrial groupings, the allocation of two-digit and three-digit NACE Rev. 2 headings to categories of aggregate classification was used, in accordance with Council Regulation No 656/2007. At product level, the statistical classification CPA 2008 of EU was used, according to Council Regulation No 451/2008.
Geographical coverage	The index covers the whole Country.
Coverage of economic activities	The index covers all the sections of industry, the main industrial groups, as well as all levels of economic activity.
Statistical survey	The data are collected from a sample of 1,263 enterprises. The survey covers 325 products and the measurement of the surveyed products is made in terms of output quantities or in terms of production value or turnover, according to the specific features in each branch of economic activity.
Seasonal adjustment	Seasonal adjustment is the procedure followed to remove the impact of seasonality on the time-series (i.e. the impact of monthly effects, e.g. holidays, tourist period etc.), in order to improve comparability over time. The method applied is TRAMO-SEATS with the use of JDemetra+ 2.0.0. For the seasonal adjustment of the Industrial Production Index at 2-digit level of NACE Rev.2, at section level (B – Mining and Quarrying, C – Manufacturing, D – Electricity and E – Water Supply) and for the Main Industrial Groupings (MIGs), the direct approach is applied, namely each time-series is seasonally adjusted independently. For the overall Industrial Production Index, the indirect approach is applied, with the seasonally adjusted IPI being computed by aggregating the seasonally adjusted MIGs using appropriate weights.
Publication of data	The revised IPI with the new base year 2015 (2015=100.0) is released since July 2019, with May 2019 as the first reference month. Data with base year 2015=100.0 are available from January 2000 onwards.
References	More information about the methodology concerning the compilation and calculation of the index and the time series are available on the website of the Hellenic Statistical Authority (ELSTAT) (http://www.statistics.gr/en/statistics/-/publication/DKT21/-).