



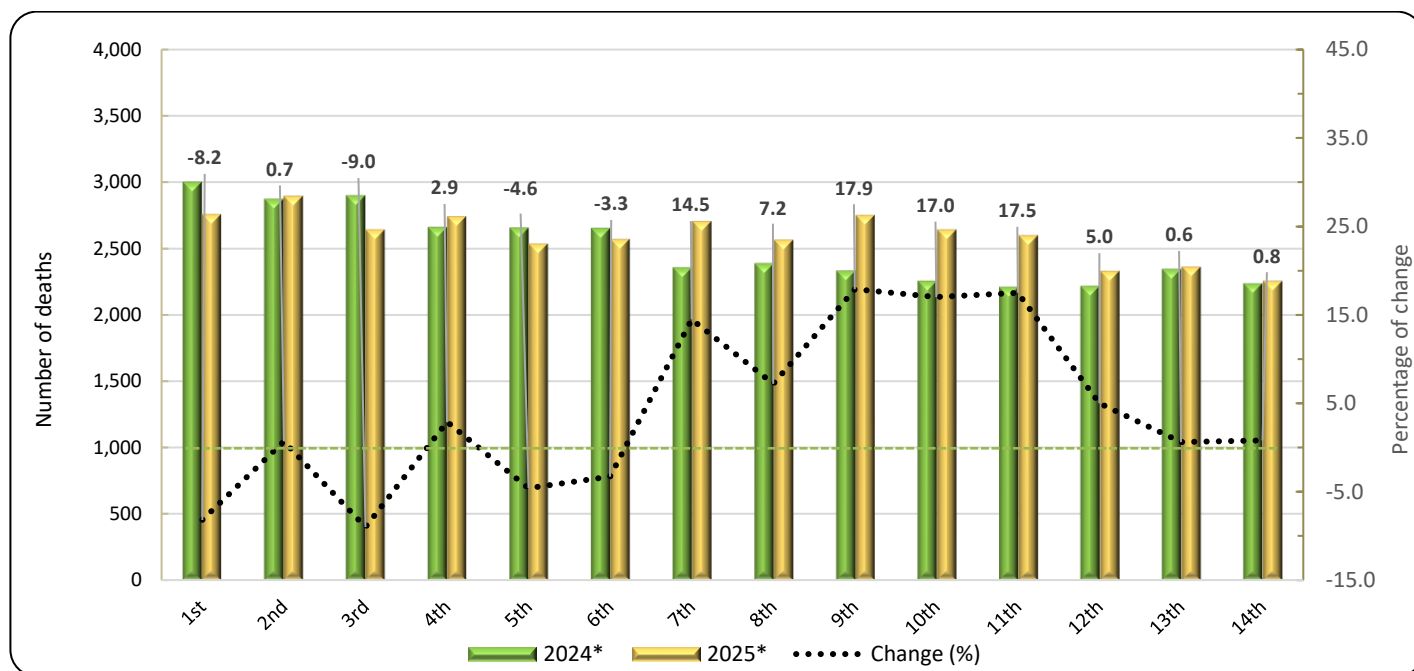
## DATA ON WEEKLY DEATHS: Period 1<sup>st</sup> to 14<sup>th</sup> week, 2025

The Hellenic Statistical Authority (ELSTAT) announces the provisional statistical data depicting the weekly evolution of death counts for the period from the first (1<sup>st</sup>) to the fourteenth (14<sup>th</sup>) week of 2025 (30/12/2024 – 06/04/2025), according to the international standard of dates ISO8601. Data refer to the deaths that occurred in the Greek territory during that period due to various causes including deaths attributed to Covid-19.

The data included in this publication are compiled within the framework of the Vital Statistics Survey, are drawn from civil registry acts as submitted by Municipal Authorities and refer to vital events declared and registered until the date of data transmission. Overdue registrations of deaths are integrated at a later stage on the date of occurrence.

According to these data, **the number of deaths in Greece during the first fourteen (14) weeks of 2025 (30/12/2024 – 06/04/2025) amounted to 36,342** (18,276 men and 18,066 women), **whereas during the corresponding period of 2024 (01/01/2024 – 07/04/2024) had amounted to 35,117** (17,742 men and 17,375 women) recording an increase of 1,225 deaths (3.5%). A decrease of 1,906 deaths (-5.0%) is recorded compared to the average of the first fourteen (14) weeks cumulative deaths for the six-year period 2019 – 2024 (38,248 deaths). The corresponding annual rates of change for the period 2019 - 2024 amount to -7.5% in 2024 compared to 2023 (37,945), -13.7% in 2023 compared to 2022 (43,968), 17.8% in 2022 compared to 2021 (37,338), -0.8% in 2021 compared to 2020 (37,627) and 0.4% in 2020 compared to 2019 (37,492) (Tables 1, 2, 3 and 4).

Graph 1. Weekly evolution of deaths for the weeks 1<sup>st</sup> – 14<sup>th</sup>, 2024 and 2025



\*Provisional data

### Information on methodological issues:

Population, Employment and Cost of Living Statistics Division  
Population and Migration Statistics Section  
Thymoglou Georgia, tel: +30 213 135 2175, e-mail: [g.thymoglou@statistics.gr](mailto:g.thymoglou@statistics.gr)  
Christou Christos, tel: +30 213 135 2884, e-mail: [c.christou@statistics.gr](mailto:c.christou@statistics.gr)  
Paschalidou Eleftheria, tel: +30 213 135 2873, e-mail: [e.paschalidou@statistics.gr](mailto:e.paschalidou@statistics.gr)

### Information on data provision:

tel: +30 213 135 2022, 2308, 2310  
e-mail: [data.dissem@statistics.gr](mailto:data.dissem@statistics.gr)

**Table 1. Weekly evolution of deaths, 2024 and 2025**

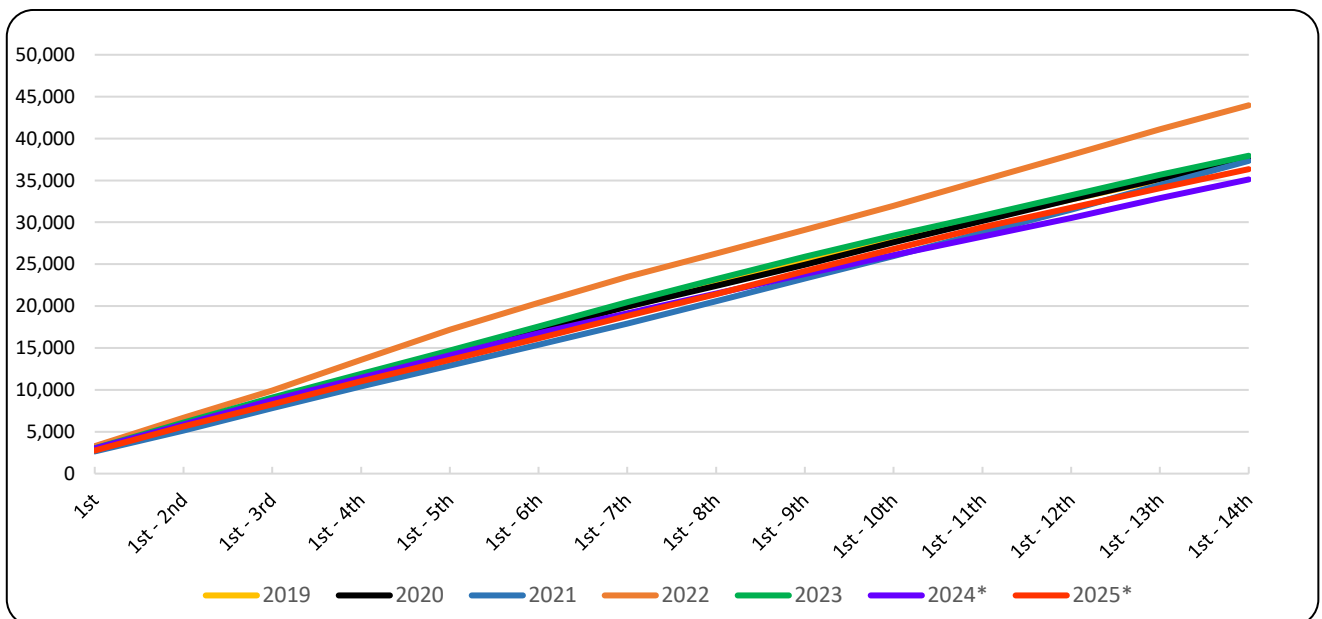
| Week             | 2024*         | 2025*         | Change (%) |
|------------------|---------------|---------------|------------|
| 1 <sup>st</sup>  | 3,003         | 2,757         | -8.2       |
| 2 <sup>nd</sup>  | 2,875         | 2,894         | 0.7        |
| 3 <sup>rd</sup>  | 2,903         | 2,641         | -9.0       |
| 4 <sup>th</sup>  | 2,664         | 2,741         | 2.9        |
| 5 <sup>th</sup>  | 2,658         | 2,536         | -4.6       |
| 6 <sup>th</sup>  | 2,656         | 2,568         | -3.3       |
| 7 <sup>th</sup>  | 2,360         | 2,703         | 14.5       |
| 8 <sup>th</sup>  | 2,390         | 2,563         | 7.2        |
| 9 <sup>th</sup>  | 2,334         | 2,751         | 17.9       |
| 10 <sup>th</sup> | 2,258         | 2,642         | 17.0       |
| 11 <sup>th</sup> | 2,212         | 2,599         | 17.5       |
| 12 <sup>th</sup> | 2,218         | 2,330         | 5.0        |
| 13 <sup>th</sup> | 2,348         | 2,362         | 0.6        |
| 14 <sup>th</sup> | 2,238         | 2,255         | 0.8        |
| <b>Total</b>     | <b>35,117</b> | <b>36,342</b> | <b>3.5</b> |

\*Provisional data

According to the above data, for the first fourteen (14) weeks of 2025 compared to the corresponding period of 2024, the most notable increases are observed for the 9<sup>th</sup> (24/02/2025 - 02/03/2025), the 11<sup>th</sup> (10/03/2025 - 16/03/2025) and the 10<sup>th</sup> week (03/03/2025 - 09/03/2025) by 17.9%, 17.5% and 17.0% respectively, whereas the most notable decreases are observed for the 3<sup>rd</sup> (13/01/2025 - 19/01/2025), the 1<sup>st</sup> (30/12/2024 - 05/01/2025) and the 5<sup>th</sup> week (27/01/2025 - 02/02/2025) by 9.0%, 8.2% and 4.6% respectively.

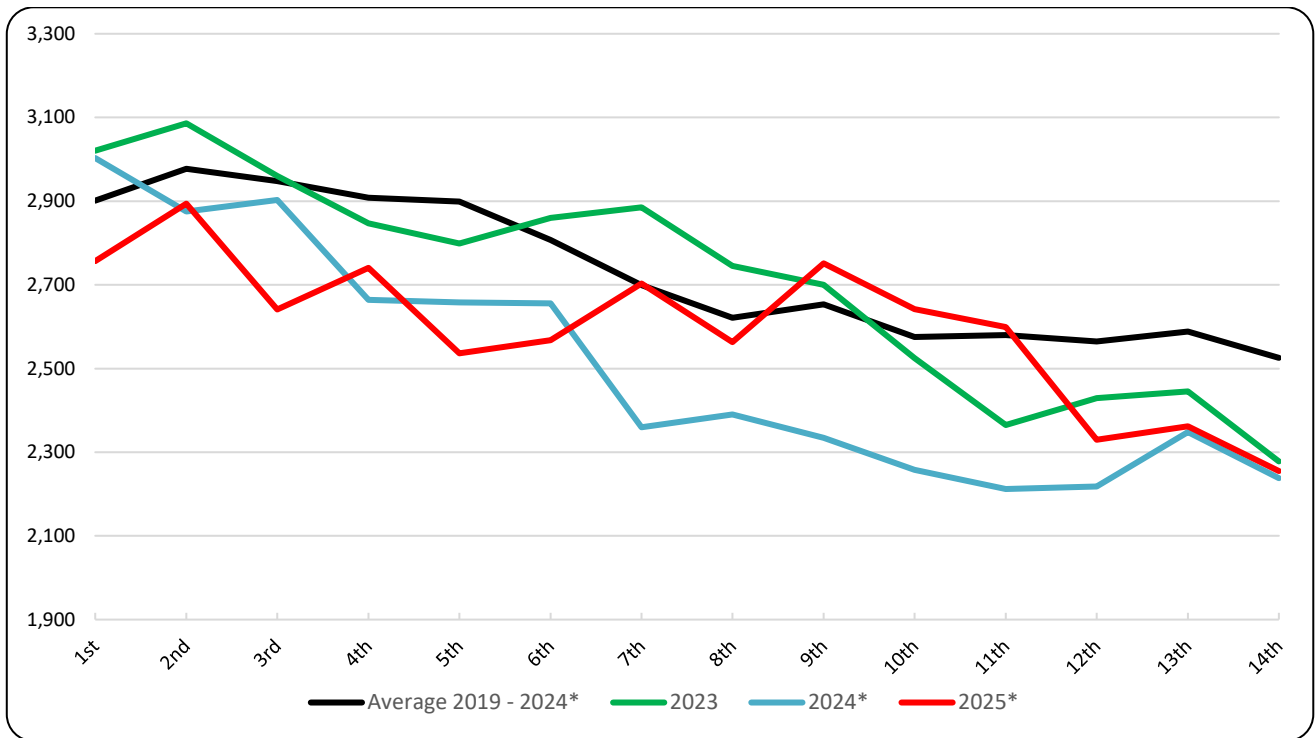
It should be noted that data are updated after integration of more recent data or upon revision of already transmitted data by the Registry Offices. As a result, data may differ from those already announced in previous publications.

**Graph 2. Deaths for the weeks 1<sup>st</sup> – 14<sup>th</sup>, 2019 - 2025 (cumulative)**



\*Provisional data

**Graph 3. Deaths by week for the weeks 1<sup>st</sup> – 14<sup>th</sup>, 2023, 2024, 2025 and Average for the period 2019 – 2024**



\*Provisional data

**Table 2. Deaths for the weeks 1<sup>st</sup> – 14<sup>th</sup>, 2019 - 2025 (cumulative)**

| Week                               | 2019   | 2020   | 2021   | 2022   | 2023   | 2024*  | 2025*  | Average 2019 - 2024* |
|------------------------------------|--------|--------|--------|--------|--------|--------|--------|----------------------|
| 1 <sup>st</sup>                    | 2,706  | 2,751  | 2,650  | 3,276  | 3,021  | 3,003  | 2,757  | 2,901                |
| 1 <sup>st</sup> - 2 <sup>nd</sup>  | 5,811  | 5,674  | 5,147  | 6,654  | 6,107  | 5,878  | 5,651  | 5,879                |
| 1 <sup>st</sup> - 3 <sup>rd</sup>  | 8,850  | 8,537  | 7,798  | 9,924  | 9,067  | 8,781  | 8,292  | 8,826                |
| 1 <sup>st</sup> - 4 <sup>th</sup>  | 11,710 | 11,311 | 10,423 | 13,603 | 11,914 | 11,445 | 11,033 | 11,734               |
| 1 <sup>st</sup> - 5 <sup>th</sup>  | 14,603 | 14,301 | 12,916 | 17,164 | 14,713 | 14,103 | 13,569 | 14,633               |
| 1 <sup>st</sup> - 6 <sup>th</sup>  | 17,375 | 17,151 | 15,379 | 20,406 | 17,573 | 16,759 | 16,137 | 17,441               |
| 1 <sup>st</sup> - 7 <sup>th</sup>  | 19,938 | 19,933 | 17,914 | 23,475 | 20,458 | 19,119 | 18,840 | 20,140               |
| 1 <sup>st</sup> - 8 <sup>th</sup>  | 22,598 | 22,402 | 20,582 | 26,272 | 23,203 | 21,509 | 21,403 | 22,761               |
| 1 <sup>st</sup> - 9 <sup>th</sup>  | 25,367 | 24,947 | 23,306 | 29,119 | 25,903 | 23,843 | 24,154 | 25,414               |
| 1 <sup>st</sup> - 10 <sup>th</sup> | 27,886 | 27,592 | 25,963 | 31,967 | 28,428 | 26,101 | 26,796 | 27,990               |
| 1 <sup>st</sup> - 11 <sup>th</sup> | 30,356 | 30,186 | 28,751 | 35,016 | 30,793 | 28,313 | 29,395 | 30,569               |
| 1 <sup>st</sup> - 12 <sup>th</sup> | 32,747 | 32,734 | 31,510 | 38,058 | 33,222 | 30,531 | 31,725 | 33,134               |
| 1 <sup>st</sup> - 13 <sup>th</sup> | 35,079 | 35,173 | 34,440 | 41,096 | 35,667 | 32,879 | 34,087 | 35,722               |
| 1 <sup>st</sup> - 14 <sup>th</sup> | 37,492 | 37,627 | 37,338 | 43,968 | 37,945 | 35,117 | 36,342 | 38,248               |
| Change (%)                         |        | 0.4    | -0.8   | 17.8   | -13.7  | -7.5   | 3.5    |                      |

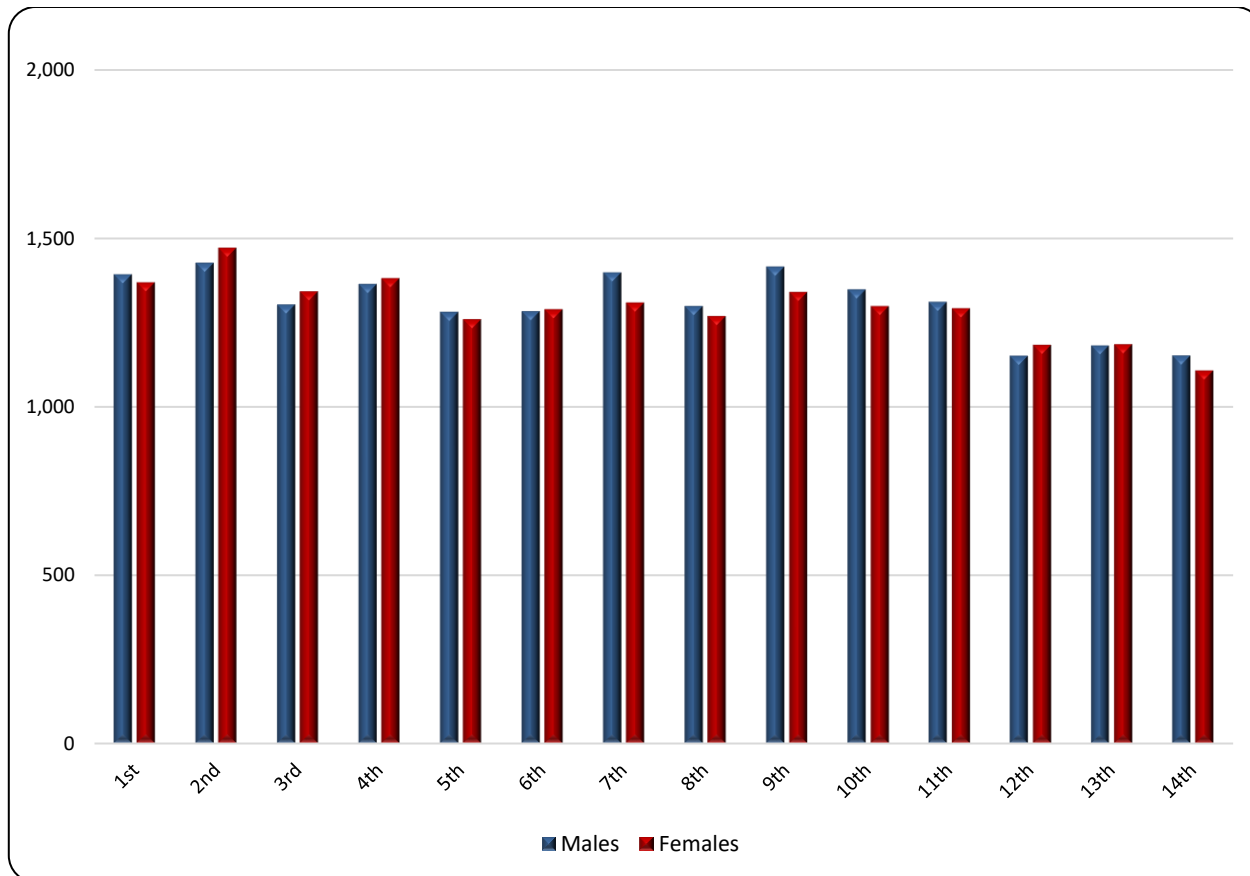
\*Provisional data

**Table 3. Weekly evolution of deaths by sex, for the weeks 1<sup>st</sup> – 14<sup>th</sup>, 2025\***

| Week             | Total         | Males         | Females       |
|------------------|---------------|---------------|---------------|
| 1 <sup>st</sup>  | 2,757         | 1,390         | 1,367         |
| 2 <sup>nd</sup>  | 2,894         | 1,425         | 1,469         |
| 3 <sup>rd</sup>  | 2,641         | 1,301         | 1,340         |
| 4 <sup>th</sup>  | 2,741         | 1,362         | 1,379         |
| 5 <sup>th</sup>  | 2,536         | 1,279         | 1,257         |
| 6 <sup>th</sup>  | 2,568         | 1,281         | 1,287         |
| 7 <sup>th</sup>  | 2,703         | 1,396         | 1,307         |
| 8 <sup>th</sup>  | 2,563         | 1,296         | 1,267         |
| 9 <sup>th</sup>  | 2,751         | 1,413         | 1,338         |
| 10 <sup>th</sup> | 2,642         | 1,346         | 1,296         |
| 11 <sup>th</sup> | 2,599         | 1,309         | 1,290         |
| 12 <sup>th</sup> | 2,330         | 1,149         | 1,181         |
| 13 <sup>th</sup> | 2,362         | 1,179         | 1,183         |
| 14 <sup>th</sup> | 2,255         | 1,150         | 1,105         |
| <b>Total</b>     | <b>36,342</b> | <b>18,276</b> | <b>18,066</b> |

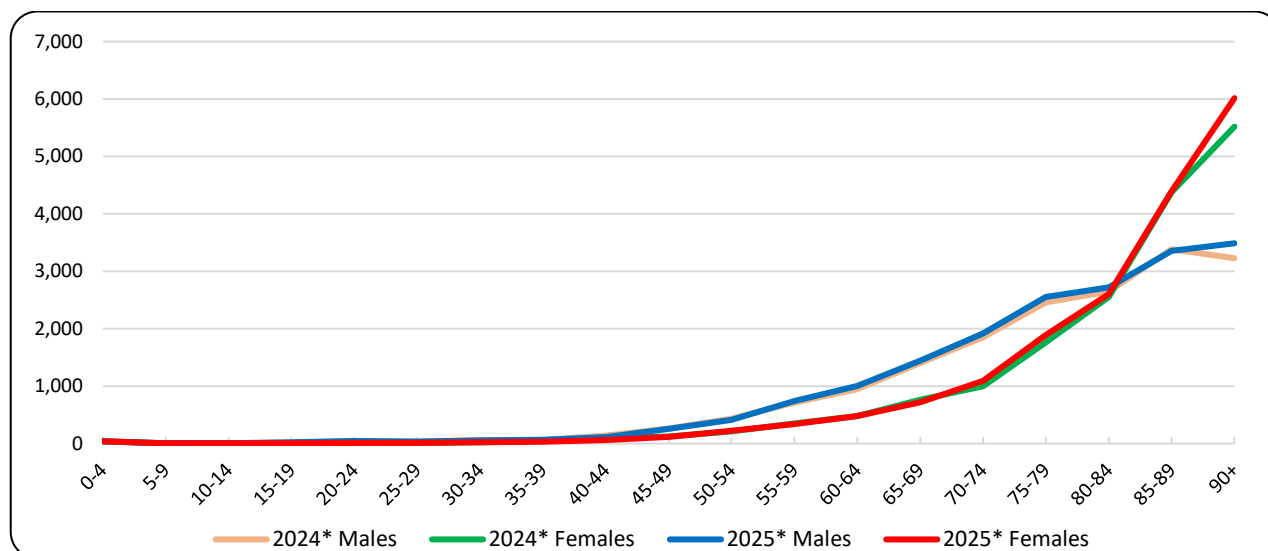
\*Provisional data

**Graph 4. Weekly evolution of deaths by sex, for the weeks 1<sup>st</sup> – 14<sup>th</sup>, 2025\***



\*Provisional data

**Graph 5. Deaths by age group and sex, 1<sup>st</sup> – 14<sup>th</sup> week, 2024 and 2025**



\*Provisional data

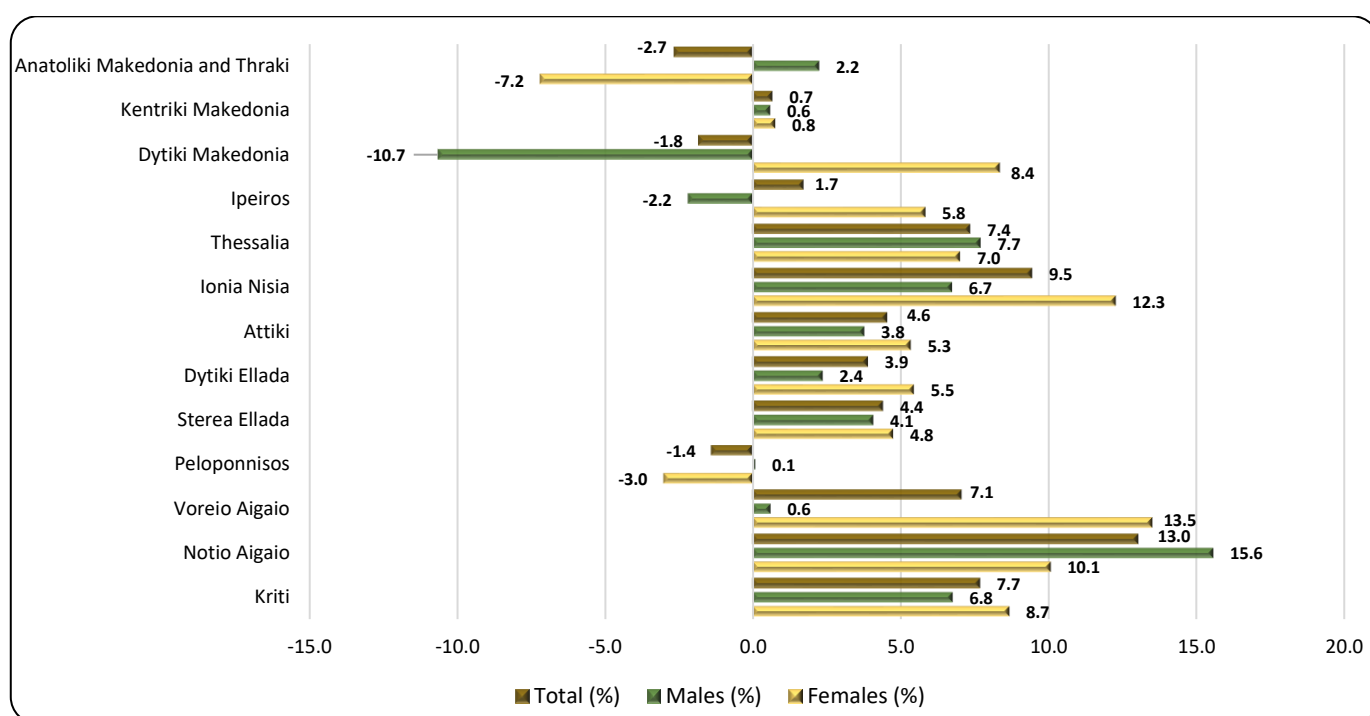
**Table 4. Deaths by age group and sex, weeks 1<sup>st</sup> – 14<sup>th</sup>, 2024 and 2025**

| Age Group    | 2024*         |               |               | 2025*         |               |               |
|--------------|---------------|---------------|---------------|---------------|---------------|---------------|
|              | Total         | Males         | Females       | Total         | Males         | Females       |
| 0 - 4        | 83            | 46            | 37            | 78            | 41            | 37            |
| 5 - 9        | 7             | 2             | 5             | 10            | 6             | 4             |
| 10 - 14      | 10            | 7             | 3             | 9             | 4             | 5             |
| 15 - 19      | 32            | 21            | 11            | 30            | 24            | 6             |
| 20 - 24      | 55            | 45            | 10            | 55            | 43            | 12            |
| 25 - 29      | 51            | 41            | 10            | 46            | 35            | 11            |
| 30 - 34      | 84            | 60            | 24            | 74            | 54            | 20            |
| 35 - 39      | 100           | 60            | 40            | 97            | 66            | 31            |
| 40 - 44      | 233           | 139           | 94            | 176           | 113           | 63            |
| 45 - 49      | 379           | 259           | 120           | 374           | 258           | 116           |
| 50 - 54      | 647           | 434           | 213           | 638           | 413           | 225           |
| 55 - 59      | 1,064         | 715           | 349           | 1,081         | 740           | 341           |
| 60 - 64      | 1,426         | 946           | 480           | 1,482         | 1,002         | 480           |
| 65 - 69      | 2,171         | 1,406         | 765           | 2,158         | 1,441         | 717           |
| 70 - 74      | 2,847         | 1,848         | 999           | 3,008         | 1,916         | 1,092         |
| 75 - 79      | 4,219         | 2,456         | 1,763         | 4,444         | 2,552         | 1,892         |
| 80 - 84      | 5,201         | 2,646         | 2,555         | 5,326         | 2,722         | 2,604         |
| 85 - 89      | 7,759         | 3,383         | 4,376         | 7,748         | 3,354         | 4,394         |
| 90+          | 8,744         | 3,225         | 5,519         | 9,504         | 3,488         | 6,016         |
| Unknown      | 5             | 3             | 2             | 4             | 4             | 0             |
| <b>Total</b> | <b>35,117</b> | <b>17,742</b> | <b>17,375</b> | <b>36,342</b> | <b>18,276</b> | <b>18,066</b> |

\*Provisional data

As regards the breakdown of the total number of deaths by age group of the deceased for the first fourteen (14) weeks of 2025, compared to the corresponding period of the year 2024, a decrease of deaths is observed in eleven (11) age groups and an increase in seven (7), whereas there was no change in the age group of 20 to 24. The highest increases, in absolute figures, are observed for the age groups over 90 (760 deaths), 75 to 79 (225 deaths) and 70 to 74 (161 deaths) compared to the corresponding period of 2024, whereas the most notable decreases are observed for the age groups 40 to 44 (57 deaths), 65 to 69 (13 deaths) and 85 to 89 (11 deaths) (Table 4).

**Graph 6. Annual change of deaths 2025\*/2024\* (%) by sex and Region of usual residence, weeks 1<sup>st</sup> – 14<sup>th</sup>**



\*Provisional data

**Table 5. Annual change of deaths 2025/2024 (%) by sex and Region of usual residence, weeks 1<sup>st</sup> – 14<sup>th</sup>**

| Region                         | 2024*         |               |               | 2025*         |               |               | Change (%) |            |            |
|--------------------------------|---------------|---------------|---------------|---------------|---------------|---------------|------------|------------|------------|
|                                | Total         | Males         | Females       | Total         | Males         | Females       | Total      | Males      | Females    |
| Anatoliki Makedonia and Thraki | 2,220         | 1,068         | 1,152         | 2,161         | 1,092         | 1,069         | -2.7       | 2.2        | -7.2       |
| Kentriki Makedonia             | 6,059         | 3,034         | 3,025         | 6,100         | 3,052         | 3,048         | 0.7        | 0.6        | 0.8        |
| Dytiki Makedonia               | 928           | 497           | 431           | 911           | 444           | 467           | -1.8       | -10.7      | 8.4        |
| Ipeiros                        | 1,155         | 590           | 565           | 1,175         | 577           | 598           | 1.7        | -2.2       | 5.8        |
| Thessalia                      | 2,444         | 1,233         | 1,211         | 2,624         | 1,328         | 1,296         | 7.4        | 7.7        | 7.0        |
| Ionia Nisia                    | 698           | 356           | 342           | 764           | 380           | 384           | 9.5        | 6.7        | 12.3       |
| Attiki                         | 11,906        | 5,980         | 5,926         | 12,449        | 6,206         | 6,243         | 4.6        | 3.8        | 5.3        |
| Dytiki Ellada                  | 2,179         | 1,098         | 1,081         | 2,264         | 1,124         | 1,140         | 3.9        | 2.4        | 5.5        |
| Stereia Ellada                 | 1,948         | 980           | 968           | 2,034         | 1,020         | 1,014         | 4.4        | 4.1        | 4.8        |
| Peloponnisos                   | 2,220         | 1,163         | 1,057         | 2,189         | 1,164         | 1,025         | -1.4       | 0.1        | -3.0       |
| Voreio Aigaio                  | 665           | 332           | 333           | 712           | 334           | 378           | 7.1        | 0.6        | 13.5       |
| Notio Aigaio                   | 859           | 462           | 397           | 971           | 534           | 437           | 13.0       | 15.6       | 10.1       |
| Kriti                          | 1,833         | 946           | 887           | 1,974         | 1,010         | 964           | 7.7        | 6.8        | 8.7        |
| Unknown                        | 3             | 3             | 0             | 14            | 11            | 3             | 366.7      | 266.7      | -          |
| <b>Total</b>                   | <b>35,117</b> | <b>17,742</b> | <b>17,375</b> | <b>36,342</b> | <b>18,276</b> | <b>18,066</b> | <b>3.5</b> | <b>3.0</b> | <b>4.0</b> |
| Abroad                         | 110           | 64            | 46            | 108           | 63            | 45            | -1.8       | -1.6       | -2.2       |

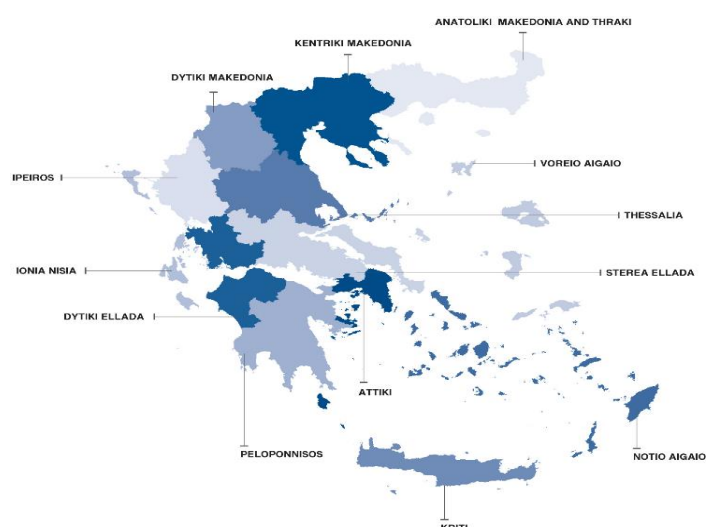
\* Provisional data

As regards the breakdown of the total number of deaths by Region of usual residence of the deceased for the first fourteen (14) weeks of 2025 compared to the corresponding period of the year 2024, an increase of deaths is observed in ten (10) out of thirteen (13) Regions of the Country. The most notable increases, in absolute values, are observed in the Regions of Attiki, Thessalia and Kriti by 543, 180 and 141 deaths respectively, whereas decreases are observed in the Regions of Anatoliki Makedonia and Thraki, Peloponnisos and Dytiki Makedonia by 59, 31 and 17 deaths respectively, (Graph 6, Table 5).

## EXPLANATORY NOTES

|   |   |
|---|---|
| <b>Vital Statistics-Data on weekly deaths</b> | For the Vital Statistics Survey, data are drawn from civil registry acts edited by the Municipal Authorities. Data presented in this publication refer to the weekly evolution of death counts according to the international standard of weeks ISO8601. This is a data processing for the purpose of depicting, even using provisional data, the evolution of deaths in the Country and timely recording of mortality levels in relation to basic demographic variables.   |
| <b>Reference periods</b>                      | 2024: 01/01/2024 - 07/04/2024<br>2025: 30/12/2024 - 06/04/2025  |
| <b>Legal Framework</b>                        | Law 344/76 concerning the “Registration of vital events” which lays down the obligations of the Civil Register Offices to collect and then transmit the data, as well as by Law 3832/2010 on the “Greek Statistical System”, both as amended.   |
| <b>Coverage</b>                               | The Vital Statistics Survey is an exhaustive survey and covers all deaths of usual resident population that occur in the Greek territory.   |
| <b>Definitions</b>                            | <p>All deaths of usual residents taking place in the Greek territory are recorded, regardless of the cause of death. Deaths of usual resident population of other countries are also recorded but not counted. The deaths of migrant-refugees in the Greek territory during their attempt to approach European countries are not included.</p> <p>Causes of death are defined according to the International Statistical Classification of Diseases and Related Health Problems (ICD-10) and basic categories are Diseases of the Circulatory System, Diseases of the Respiratory System, Neoplasms, Infectious and Parasitic Diseases, Violent deaths and other causes, Covid-19 included.</p> |
| <b>Methodology</b>                            | Data on deaths and Vital Statistics undergo the necessary quality checks, are processed, and presented in the form of tables.   |
| <b>Geographical classification</b>            | Geographical classification is based on the Nomenclature of Territorial Units for Statistics (NUTS). Data are disseminated at Country and Region (NUTS2) level.   |

**Map of the Regions (NUTS2) of Greece**



**International Standard of Dates** According to the international standard of dates ISO8601, the first fourteen (14) weeks of 2024 and 2025 are defined as follows:

| WEEK             | 2024                    | 2025                    |
|------------------|-------------------------|-------------------------|
| 1 <sup>st</sup>  | 01/01/2024 - 07/01/2024 | 30/12/2024 - 05/01/2025 |
| 2 <sup>nd</sup>  | 08/01/2024 - 14/01/2024 | 06/01/2025 - 12/01/2025 |
| 3 <sup>rd</sup>  | 15/01/2024 - 21/01/2024 | 13/01/2025 - 19/01/2025 |
| 4 <sup>th</sup>  | 22/01/2024 - 28/01/2024 | 20/01/2025 - 26/01/2025 |
| 5 <sup>th</sup>  | 29/01/2024 - 04/02/2024 | 27/01/2025 - 02/02/2025 |
| 6 <sup>th</sup>  | 05/02/2024 - 11/02/2024 | 03/02/2025 - 09/02/2025 |
| 7 <sup>th</sup>  | 12/02/2024 - 18/02/2024 | 10/02/2025 - 16/02/2025 |
| 8 <sup>th</sup>  | 19/02/2024 - 25/02/2024 | 17/02/2025 - 23/02/2025 |
| 9 <sup>th</sup>  | 26/02/2024 - 03/03/2024 | 24/02/2025 - 02/03/2025 |
| 10 <sup>th</sup> | 04/03/2024 - 10/03/2024 | 03/03/2025 - 09/03/2025 |
| 11 <sup>th</sup> | 11/03/2024 - 17/03/2024 | 10/03/2025 - 16/03/2025 |
| 12 <sup>th</sup> | 18/03/2024 - 24/03/2024 | 17/03/2025 - 23/03/2025 |
| 13 <sup>th</sup> | 25/03/2024 - 31/03/2024 | 24/03/2025 - 30/03/2025 |
| 14 <sup>th</sup> | 01/04/2024 - 07/04/2024 | 31/03/2025 - 06/04/2025 |

**References** More information on deaths and Vital Statistics is available on the website of ELSTAT:  
<https://www.statistics.gr/en/statistics/pop>  
 following the link: Statistics, Population and Social Conditions, Demography.