



INDUSTRIAL PRODUCTION INDEX: May 2025, y-o-y decrease of 2.0%

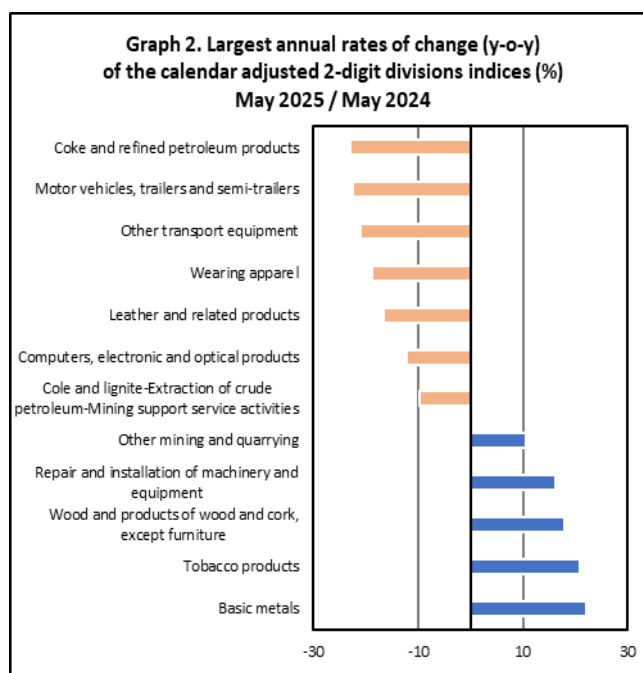
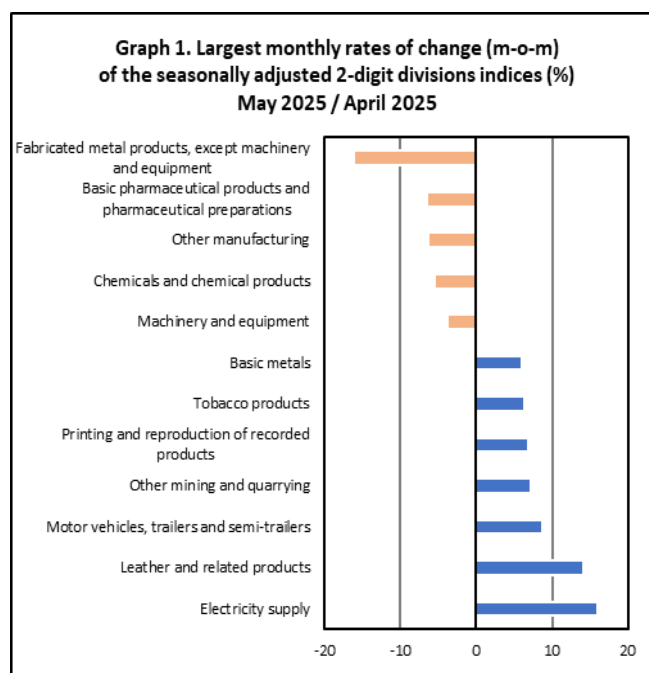
The Hellenic Statistical Authority announces the Industrial Production Index (IPI) with base year 2015=100.0 for May 2025, the evolution of which, on the basis of provisional and working day adjusted data, is as follows:

The Overall Industrial Production Index in May 2025 recorded a decrease of 2.0% compared with May 2024. The Overall IPI in May 2024 increased by 6.8% compared with the corresponding index in May 2023 (Table 1).

The average Overall Industrial Production Index for the period from January to May 2025 recorded an increase of 0.4% compared with the average IPI of the period from January to May 2024 (Table 2).

The seasonally adjusted Overall Industrial Production Index in May 2025 recorded a decrease of 0.4% compared with the corresponding index of April 2025 (Table 4).

The index of fabricated metal products, except machinery and equipment division showed the greatest percentage decrease, whereas the index of electricity supply division recorded the greatest percentage increase in May 2025 compared with April 2025. Comparing the indices of May 2025 with the corresponding indices of May 2024, the greatest percentage decrease was recorded in coke and refined petroleum products division, while the highest percentage increase was recorded in basic metals divisions (Tables 1 and 4).



Information on methodological issues:

Business Statistics Division
Manufacture-Construction Indices and Industrial Products Section
Head of the Section: Vlachokosta Evridiki
Tel: +30 213 135 2056
E-mail: e.vlachokosta@statistics.gr

Information on data provision:

Tel: +30 213 135 2024, 2308, 2310
E-mail: data.dissem@statistics.gr

Evolution of the Industrial Production Index in May 2025

I. Annual changes: May 2025 / May 2024 (Table 1)

The 2.0% decrease of the working day adjusted Overall IPI in May 2025, compared with the corresponding index in May 2024, is due to the annual changes of the sub-indices in the following industrial sections:

Decrease of:

- 7.1% in the Electricity Supply Index.
- 1.4% in the Manufacturing Index. The decrease was mainly the result of the annual changes of the sub-indices in the following 2-digit divisions: coke and refined petroleum products, motor vehicles, trailers and semi-trailers, other transport equipment, wearing apparel, leather and related products.

Increase of:

- 1.8% in the Water Supply Index.
- 9.1% in the Mining and Quarrying Index. The increase was the result of the annual changes of the sub-indices in the following 2-digit divisions: other mining and quarrying, mining of metal ores.

II. Rates of change of the average index of the period January - May 2025 compared with the corresponding index of the period January - May 2024 (Table 2)

The 0.4% increase of the working day adjusted average Overall IPI in the 5-month period January - May 2025, compared with the corresponding index in January - May 2024, is due to the corresponding rates of change of the sub-indices in the following industrial sections:

Increase of:

- 1.8% in the Electricity Supply Index.
- 1.2% in the Mining and Quarrying Index.
- 0.7% in the Water Supply Index.
- 0.04% in the Manufacturing Index.

III. Monthly changes: May 2025 / April 2025 (Table 4)

The 0.4% decrease of the seasonally adjusted Overall IPI in May 2025, compared with the corresponding index in April 2025, is due to the monthly changes of the sub-indices in the following industrial sections:

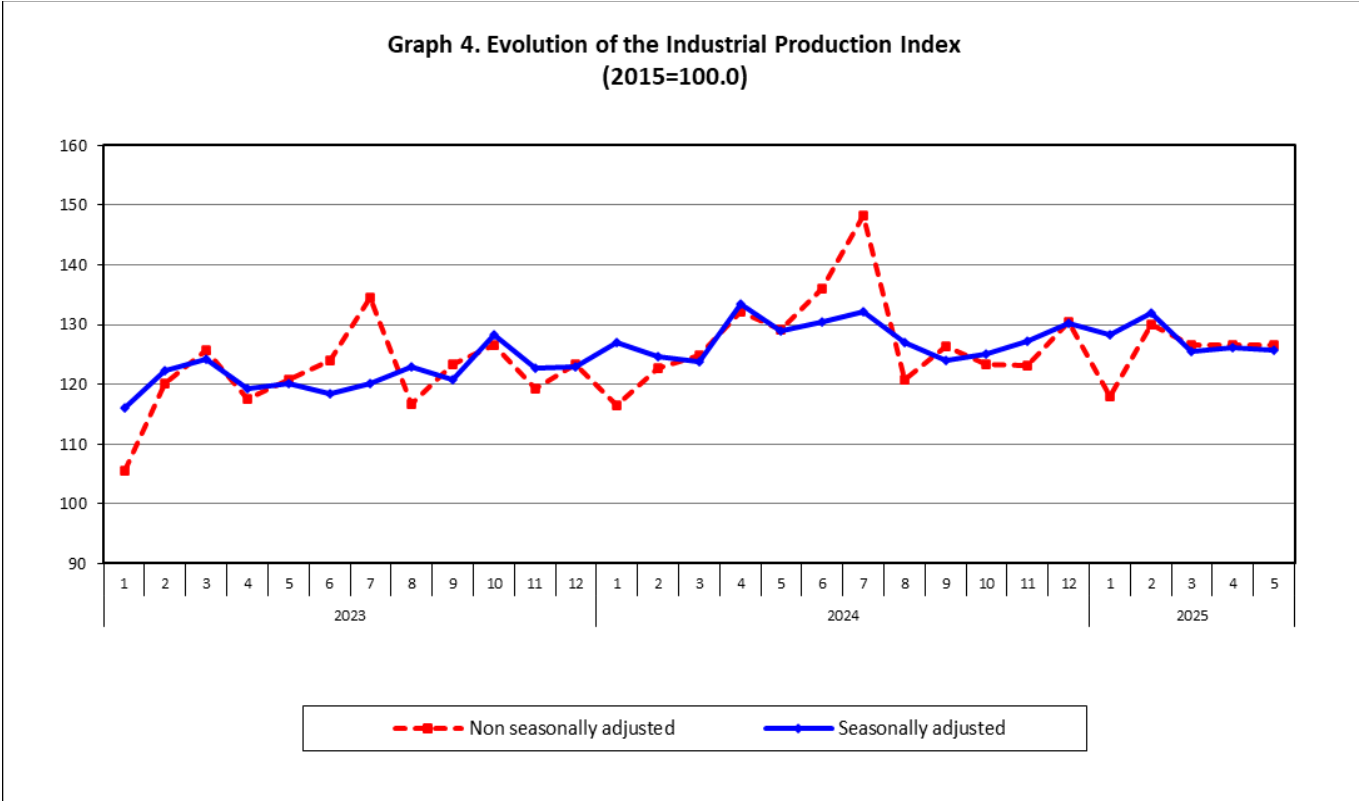
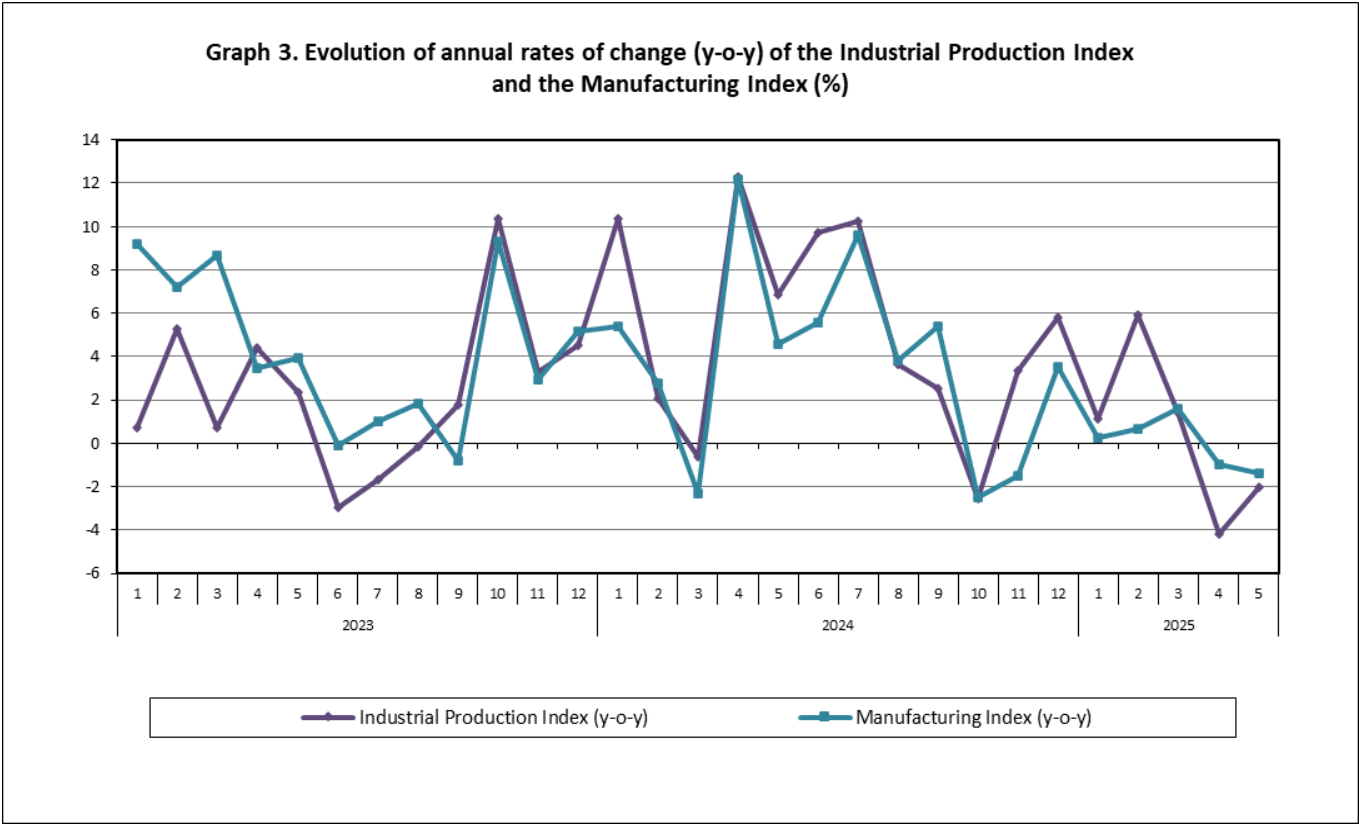
Decrease of:

- 2.7% in the Manufacturing Index.

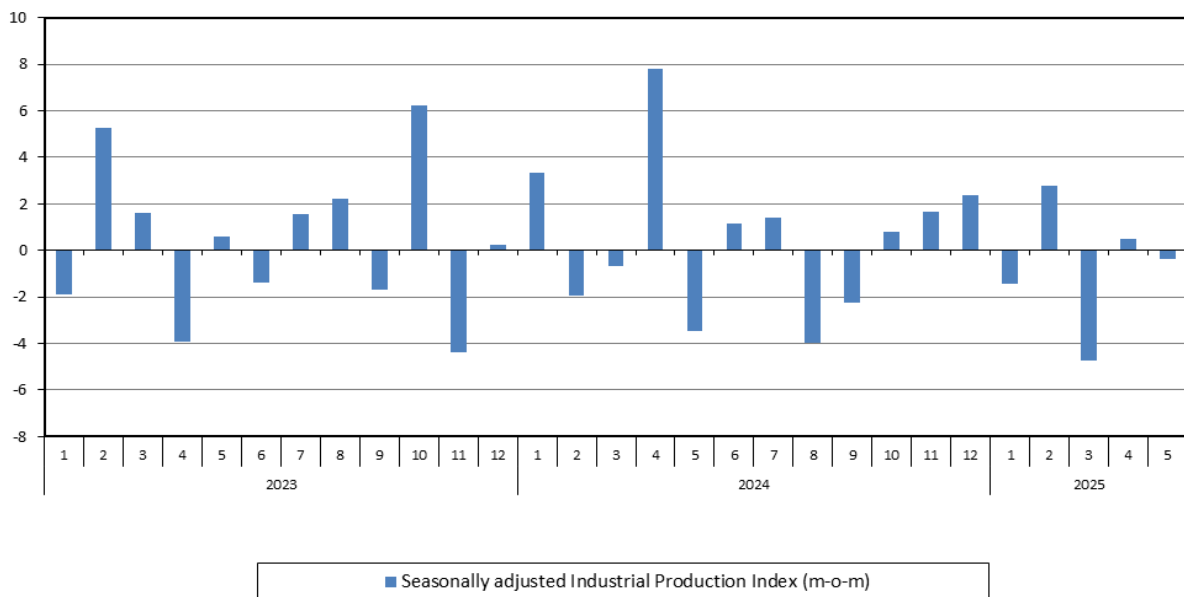
Increase of:

- 1.4% in the Water Supply Index.
- 4.2% in the Mining and Quarrying Index.
- 16.1% in the Electricity Supply Index.

The following graphs depict the annual rates of change (y-o-y) of the Industrial Production Index and the Manufacturing Index, the evolution of the seasonally and non-seasonally adjusted Overall Industrial Production Index, as well as the monthly rates of change (m-o-m) of the seasonally adjusted index.



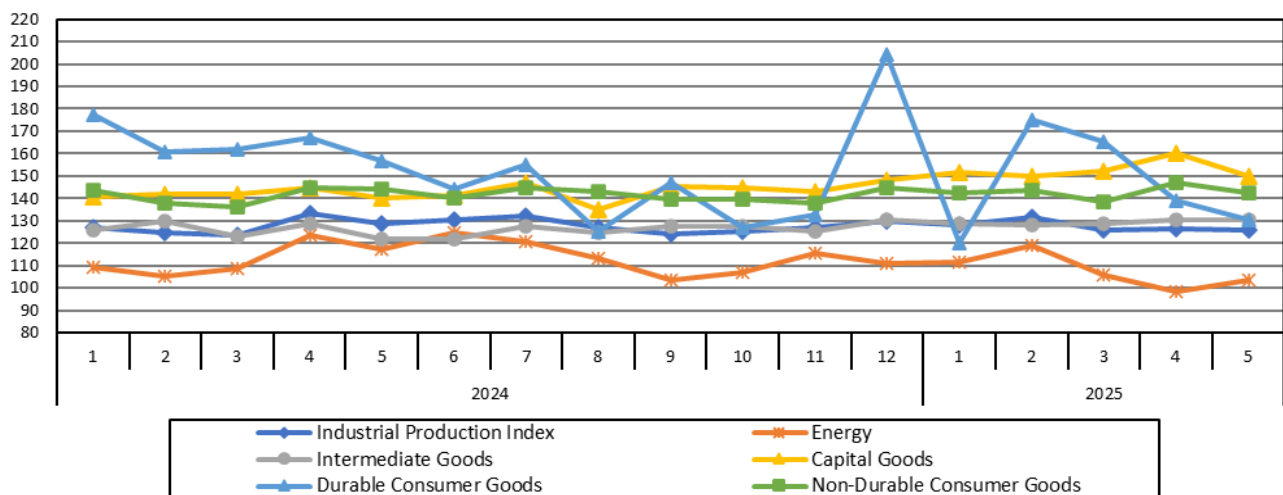
Graph 5. Evolution of the monthly rates of change (m-o-m) of the seasonally adjusted Industrial Production Index (%)



It should be noted that the time series with the seasonally adjusted indices is recalculated every time a new observation is added in the time series. Therefore, the seasonally adjusted data differ from the data published in the previous Announcement.

The following graphs depict the evolution of the seasonally adjusted Industrial Production Index and the Main Industrial Groupings, as well as the evolution of the Industrial Production Index and the Industrial Sections Indices.

Graph 6. Evolution of the seasonally adjusted Industrial Production Index and the Main Industrial Groupings Indices, January 2024 - May 2025 (2015=100.0)



**Graph 7. Evolution of the Industrial Production Index and the Industrial Section Indices
(2015=100.0)**

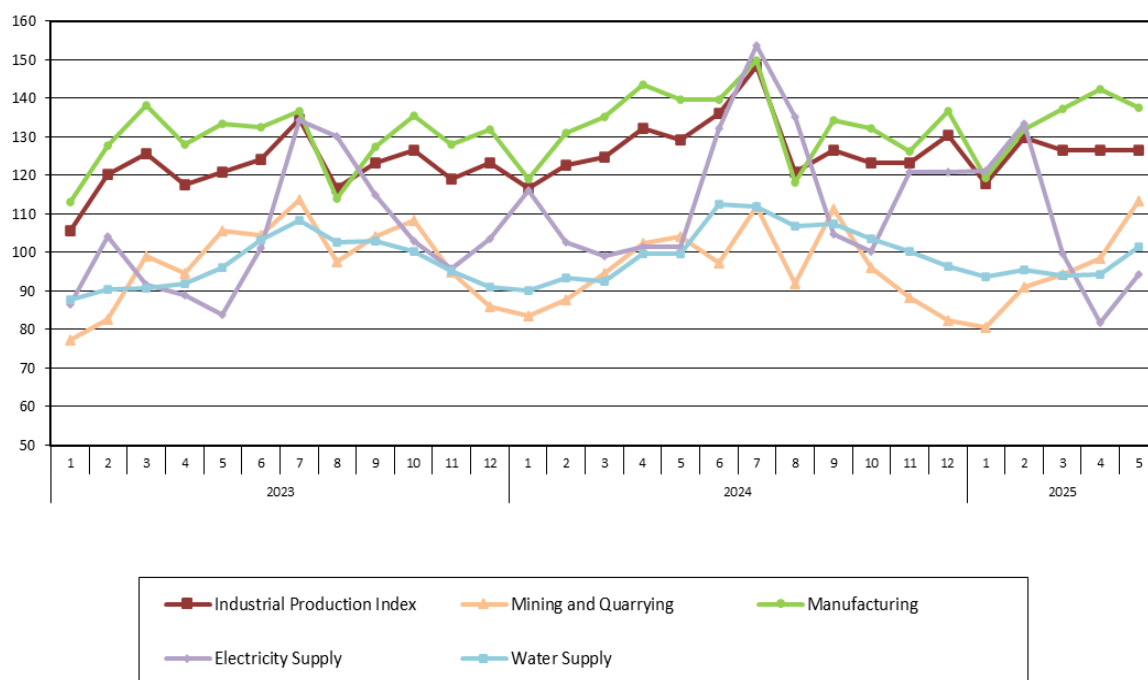


Table 1. Annual rates of change of the Industrial Production Index*(Working day adjusted data, according to the real number of working days)***Base year: 2015=100.0**

Code		Division	May			Rate of change (%)	
			2025*	2024*	2023	2025/2024	2024/2023
OVERALL INDEX			126.51	129.14	120.86	-2.0	6.8
B	MINING AND QUARRYING		113.49	104.05	105.66	9.1	-1.5
05-06-09	Mining of coal and lignite – Extraction of crude petroleum and natural gas – Mining support service activities		21.23	23.56	24.24	-9.9	-2.8
07	Mining of metal ores		125.10	117.13	140.17	6.8	-16.4
08	Other mining and quarrying		123.06	111.38	105.76	10.5	5.3
C	MANUFACTURING		137.65	139.55	133.48	-1.4	4.6
10	Food		125.88	127.93	116.56	-1.6	9.8
11	Beverages		127.41	125.57	113.81	1.5	10.3
12	Tobacco products		204.14	169.08	163.48	20.7	3.4
13	Textiles		130.82	122.85	120.98	6.5	1.5
14	Wearing apparel		54.17	66.78	66.71	-18.9	0.1
15	Leather and related products		79.29	95.09	103.97	-16.6	-8.5
16	Wood and products of wood and cork, except furniture		124.87	106.02	122.46	17.8	-13.4
17	Paper and paper products		119.12	118.32	116.13	0.7	1.9
18	Printing and reproduction of recorded products		151.67	146.22	140.78	3.7	3.9
19	Coke and refined petroleum products		86.96	113.06	97.85	-23.1	15.6
20	Chemicals and chemical products		145.27	143.93	138.74	0.9	3.7
21	Basic pharmaceutical products and pharmaceutical preparations		287.87	302.36	297.63	-4.8	1.6
22	Rubber and plastic products		137.16	129.46	134.97	5.9	-4.1
23	Other non-metallic mineral products		153.71	144.93	140.52	6.1	3.1
24	Basic metals		170.30	139.62	133.17	22.0	4.8
25	Fabricated metal products, except machinery and equipment		146.84	139.63	160.44	5.2	-13.0
26	Computers, electronic and optical products		218.41	249.08	219.05	-12.3	13.7
27	Electrical equipment		162.25	155.65	146.88	4.2	6.0
28	Machinery and equipment n. e. c.		148.41	141.73	130.70	4.7	8.4
29	Motor vehicles, trailers and semi-trailers		130.06	167.64	184.38	-22.4	-9.1
30	Other transport equipment		74.28	93.97	83.94	-20.9	11.9
31	Furniture		157.42	168.76	192.96	-6.7	-12.5
32	Other manufacturing		135.87	150.62	149.95	-9.8	0.4
33	Repair and installation of machinery and equipment		122.84	105.71	104.04	16.2	1.6
D	ELECTRICITY SUPPLY		94.30	101.50	83.74	-7.1	21.2
35	Electricity supply		94.30	101.50	83.74	-7.1	21.2
E	WATER SUPPLY		101.33	99.55	96.22	1.8	3.5
36	Water collection, treatment and supply		101.33	99.55	96.22	1.8	3.5
MAIN INDUSTRIAL GROUPINGS							
1	Energy		92.49	104.79	89.33	-11.7	17.3
2	Intermediate goods		140.82	131.53	129.23	7.1	1.8
3	Capital goods		151.05	141.90	150.58	6.5	-5.8
4	Consumer Durables		146.24	176.08	159.45	-16.9	10.4
5	Consumer Non-Durables		149.03	150.93	142.67	-1.3	5.8

* Provisional data

Note: The indices are rounded up to two decimal digits when published and percentage changes up to one decimal digit when published.

Table 2. Average indices of the period January – May and rates of change of the Industrial Production Index
(Working day adjusted data, according to the real number of working days)

Base year: 2015=100.0

Code		Division	Average indices of the period Jan.-May			Rate of change (%)	
			2025*	2024*	2023	2025/2024	2024/2023
OVERALL INDEX			125.51	125.03	117.99	0.4	6.0
B	MINING AND QUARRYING		95.57	94.46	91.93	1.2	2.8
05-06-09	Mining of coal and lignite – Extraction of crude petroleum and natural gas – Mining support service activities		25.95	17.89	25.41	45.0	-29.6
07	Mining of metal ores		110.49	124.75	127.46	-11.4	-2.1
08	Other mining and quarrying		100.67	95.30	89.48	5.6	6.5
C	MANUFACTURING		133.72	133.67	128.10	0.04	4.4
10	Food		122.13	118.67	111.94	2.9	6.0
11	Beverages		105.32	104.08	97.66	1.2	6.6
12	Tobacco products		186.85	157.81	146.18	18.4	8.0
13	Textiles		117.01	108.99	116.89	7.4	-6.8
14	Wearing apparel		59.95	68.44	76.90	-12.4	-11.0
15	Leather and related products		77.20	92.55	107.62	-16.6	-14.0
16	Wood and products of wood and cork, except furniture		113.18	108.56	110.41	4.3	-1.7
17	Paper and paper products		114.95	116.14	116.19	-1.0	0.0
18	Printing and reproduction of recorded products		140.63	139.91	131.47	0.5	6.4
19	Coke and refined petroleum products		98.99	115.75	111.98	-14.5	3.4
20	Chemicals and chemical products		143.40	142.53	129.54	0.6	10.0
21	Basic pharmaceutical products and pharmaceutical preparations		281.89	292.49	283.79	-3.6	3.1
22	Rubber and plastic products		136.00	129.38	128.91	5.1	0.4
23	Other non-metallic mineral products		142.00	143.25	127.62	-0.9	12.2
24	Basic metals		155.16	135.14	134.44	14.8	0.5
25	Fabricated metal products, except machinery and equipment		141.42	140.51	133.03	0.7	5.6
26	Computers, electronic and optical products		233.36	259.53	241.45	-10.1	7.5
27	Electrical equipment		154.23	146.54	138.86	5.2	5.5
28	Machinery and equipment n. e. c.		135.07	126.11	126.30	7.1	-0.2
29	Motor vehicles, trailers and semi-trailers		116.33	134.08	159.84	-13.2	-16.1
30	Other transport equipment		57.05	65.77	59.34	-13.3	10.8
31	Furniture		138.46	150.36	153.10	-7.9	-1.8
32	Other manufacturing		124.35	125.10	127.38	-0.6	-1.8
33	Repair and installation of machinery and equipment		123.93	97.18	92.32	27.5	5.3
D	ELECTRICITY SUPPLY		106.00	104.16	91.03	1.8	14.4
35	Electricity supply		106.00	104.16	91.03	1.8	14.4
E	WATER SUPPLY		95.83	95.18	91.37	0.7	4.2
36	Water collection, treatment and supply		95.83	95.18	91.37	0.7	4.2
MAIN INDUSTRIAL GROUPINGS							
1	Energy		102.60	106.72	97.57	-3.9	9.4
2	Intermediate goods		130.90	127.40	121.55	2.7	4.8
3	Capital goods		145.28	134.01	132.65	8.4	1.0
4	Consumer Durables		141.38	157.40	134.83	-10.2	16.7
5	Consumer Non-Durables		142.99	141.30	135.17	1.2	4.5

* Provisional data

Note: The indices are rounded up to two decimal digits when published and percentage changes up to one decimal digit when published.

Table 3. Monthly rate of change of the Industrial Production Index*(Working day adjusted data, according to the real number of working days)***Base year: 2015=100.0**

Code	Division	May 2025*	April 2025*	Rate of change (%) May 2025/Apr. 2025
OVERALL INDEX		126.51	126.58	-0.05
B	MINING AND QUARRYING	113.49	98.36	15.4
05-06-09	Mining of coal and lignite – Extraction of crude petroleum and natural gas – Mining support service activities	21.23	27.97	-24.12
07	Mining of metal ores	125.10	122.59	2.0
08	Other mining and quarrying	123.06	100.37	22.6
C	MANUFACTURING	137.65	142.29	-3.3
10	Food	125.88	132.32	-4.9
11	Beverages	127.41	126.21	0.9
12	Tobacco products	204.14	185.78	9.9
13	Textiles	130.82	120.63	8.4
14	Wearing apparel	54.17	60.86	-11.0
15	Leather and related products	79.29	81.11	-2.2
16	Wood and products of wood and cork, except furniture	124.87	123.09	1.4
17	Paper and paper products	119.12	120.54	-1.2
18	Printing and reproduction of recorded products	151.67	140.42	8.0
19	Coke and refined petroleum products	86.96	88.13	-1.3
20	Chemicals and chemical products	145.27	157.02	-7.5
21	Basic pharmaceutical products and pharmaceutical preparations	287.87	318.75	-9.7
22	Rubber and plastic products	137.16	143.74	-4.6
23	Other non-metallic mineral products	153.71	146.47	4.9
24	Basic metals	170.30	154.40	10.3
25	Fabricated metal products, except machinery and equipment	146.84	173.03	-15.1
26	Computers, electronic and optical products	218.41	234.13	-6.7
27	Electrical equipment	162.25	164.15	-1.2
28	Machinery and equipment n. e. c.	148.41	157.27	-5.6
29	Motor vehicles, trailers and semi-trailers	130.06	97.44	33.5
30	Other transport equipment	74.28	63.53	16.9
31	Furniture	157.42	164.01	-4.0
32	Other manufacturing	135.87	140.13	-3.0
33	Repair and installation of machinery and equipment	122.84	125.97	-2.5
D	ELECTRICITY SUPPLY	94.30	81.66	15.5
35	Electricity supply	94.30	81.66	15.5
E	WATER SUPPLY	101.33	94.41	7.3
36	Water collection, treatment and supply	101.33	94.41	7.3
MAIN INDUSTRIAL GROUPINGS				
1	Energy	92.49	84.89	9.0
2	Intermediate goods	140.82	136.52	3.2
3	Capital goods	151.05	168.07	-10.1
4	Consumer Durables	146.24	155.55	-6.0
5	Consumer Non-Durables	149.03	156.80	-5.0

* Provisional data

Note: The indices are rounded up to two decimal digits when published and percentage changes up to one decimal digit when published.

Table 4. Monthly rate of change of the seasonally adjusted Industrial Production Index

Base year: 2015=100.0					
Code		Division	May 2025	April 2025	Rate of change (%) May 2025 / Apr. 2025
OVERALL INDEX			125.76	126.23	-0.4
B	MINING AND QUARRYING		101.90	97.81	4.2
05-06-09	Mining of coal and lignite – Extraction of crude petroleum and natural gas – Mining support service activities		-	-	-
07	Mining of metal ores		117.99	121.74	-3.1
08	Other mining and quarrying		107.35	100.09	7.3
C	MANUFACTURING		132.69	136.35	-2.7
10	Food		124.61	128.23	-2.8
11	Beverages		109.28	111.21	-1.7
12	Tobacco products		185.42	174.30	6.4
13	Textiles		114.96	112.43	2.3
14	Wearing apparel		56.94	58.57	-2.8
15	Leather and related products		73.38	64.28	14.2
16	Wood and products of wood and cork, except furniture		114.57	112.63	1.7
17	Paper and paper products		116.41	116.12	0.2
18	Printing and reproduction of recorded products		143.05	133.78	6.9
19	Coke and refined petroleum products		89.08	89.70	-0.7
20	Chemicals and chemical products		133.22	140.97	-5.5
21	Basic pharmaceutical products and pharmaceutical preparations		276.89	296.30	-6.6
22	Rubber and plastic products		130.34	131.72	-1.0
23	Other non-metallic mineral products		140.62	137.41	2.3
24	Basic metals		161.08	151.85	6.1
25	Fabricated metal products, except machinery and equipment		135.51	161.57	-16.1
26	Computers, electronic and optical products		231.07	237.38	-2.7
27	Electrical equipment		155.05	156.34	-0.8
28	Machinery and equipment n. e. c.		139.95	145.52	-3.8
29	Motor vehicles, trailers and semi-trailers		127.79	117.55	8.7
30	Other transport equipment		62.16	62.53	-0.6
31	Furniture		133.88	134.63	-0.6
32	Other manufacturing		129.07	137.66	-6.2
33	Repair and installation of machinery and equipment		131.07	135.90	-3.6
D	ELECTRICITY SUPPLY		113.09	97.44	16.1
35	Electricity supply		113.09	97.44	16.1
E	WATER SUPPLY		99.62	98.22	1.4
36	Water collection, treatment and supply		99.62	98.22	1.4
MAIN INDUSTRIAL GROUPINGS					
1	Energy		103.36	98.31	5.1
2	Intermediate goods		130.72	130.17	0.4
3	Capital goods		150.03	160.23	-6.4
4	Consumer Durables		130.58	138.81	-5.9
5	Consumer Non-Durables		142.33	147.29	-3.4

Notes:

1. The indices are rounded up to two decimal digits when published and percentage changes up to one decimal digit when published.
2. The whole time-series with seasonally adjusted indices is recalculated every time a new observation is added in the time-series.
3. The composed index of divisions 05-06-09 is not seasonally adjusted.

Table 5. Evolution of the Overall Industrial Production Index
(Working day adjusted data, according to the real number of working days)

Base year: 2015=100.0

Year and month	Overall Index	Monthly rate of change (%)	Annual rate of change (%)	12-month average index (moving average)	Rate of change of the 12-month average index (%)
2023:					
1	105.63	-10.5	0.7	118.83	2.5
2	120.18	13.8	5.3	119.33	2.5
3	125.66	4.6	0.7	119.41	1.8
4	117.60	-6.4	4.4	119.82	2.5
5	120.86	2.8	2.3	120.05	2.4
6	124.05	2.6	-3.0	119.73	1.3
7	134.56	8.5	-1.7	119.54	0.5
8	116.61	-13.3	-0.2	119.53	0.1
9	123.27	5.7	1.8	119.71	0.4
10	126.57	2.7	10.3	120.70	1.4
11	119.19	-5.8	3.3	121.01	1.8
12	123.30	3.4	4.5	121.46	2.3
Annual average	121.46				
2024*:					
1	116.56	-5.5	10.3	122.37	3.0
2	122.64	5.2	2.1	122.57	2.7
3	124.87	1.8	-0.6	122.51	2.6
4	132.08	5.8	12.3	123.71	3.2
5	129.14	-2.2	6.8	124.40	3.6
6	136.13	5.4	9.7	125.41	4.7
7	148.32	9.0	10.2	126.56	5.9
8	120.85	-18.5	3.6	126.91	6.2
9	126.42	4.6	2.6	127.17	6.2
10	123.34	-2.4	-2.6	126.90	5.1
11	123.15	-0.2	3.3	127.23	5.1
12	130.42	5.9	5.8	127.83	5.2
Annual average	127.83				
2025*:					
1	117.91	-9.6	1.2	127.94	4.6
2	129.92	10.2	5.9	128.55	4.9
3	126.64	-2.5	1.4	128.69	5.1
4	126.58	-0.05	-4.2	128.24	3.7
5	126.51	-0.05	-2.0	128.02	2.9

* Provisional data

Note: The indices are rounded up to two decimal digits when published and percentage changes up to one decimal digit when published.

Table 6. Monthly evolution of the seasonally adjusted Overall Industrial Production Index and Main Industrial Groupings

Base year: 2015=100.0

Year and month		Overall Index		Energy		Intermediate goods		Capital goods		Consumer durables		Consumer non-durables	
		Index	Monthly rate of change (%)	Index	Monthly rate of change (%)	Index	Monthly rate of change (%)	Index	Monthly rate of change (%)	Index	Monthly rate of change (%)	Index	Monthly rate of change (%)
2023:	1	116.14	-1.9	91.33	-9.7	120.47	0.4	142.44	6.2	138.53	-9.9	134.69	2.1
	2	122.26	5.3	107.15	17.3	118.25	-1.8	143.76	0.9	146.00	5.4	136.73	1.5
	3	124.19	1.6	106.66	-0.5	124.13	5.0	142.36	-1.0	141.02	-3.4	139.78	2.2
	4	119.35	-3.9	109.45	2.6	118.08	-4.9	129.64	-8.9	141.61	0.4	128.45	-8.1
	5	120.05	0.6	99.75	-8.9	119.84	1.5	147.35	13.7	141.44	-0.1	136.44	6.2
	6	118.37	-1.4	95.90	-3.9	119.76	-0.1	142.86	-3.0	147.07	4.0	136.51	0.1
	7	120.20	1.6	108.54	13.2	115.83	-3.3	132.37	-7.3	143.19	-2.6	133.31	-2.3
	8	122.85	2.2	109.85	1.2	119.34	3.0	146.10	10.4	142.85	-0.2	134.13	0.6
	9	120.80	-1.7	110.86	0.9	114.27	-4.2	138.54	-5.2	151.69	6.2	131.63	-1.9
	10	128.32	6.2	112.87	1.8	123.85	8.4	146.01	5.4	159.86	5.4	144.18	9.5
	11	122.72	-4.4	104.29	-7.6	122.31	-1.2	148.98	2.0	163.99	2.6	136.30	-5.5
	12	122.99	0.2	102.71	-1.5	126.54	3.5	151.39	1.6	159.86	-2.5	135.37	-0.7
Annual average		121.52		104.95		120.22		142.65		148.09		135.63	
2024:	1	127.10	3.3	108.98	6.1	126.00	-0.4	140.81	-7.0	177.42	11.0	143.67	6.1
	2	124.65	-1.9	105.02	-3.6	130.06	3.2	141.65	0.6	160.93	-9.3	137.84	-4.1
	3	123.84	-0.7	108.65	3.5	123.20	-5.3	141.76	0.1	161.80	0.5	136.04	-1.3
	4	133.49	7.8	123.69	13.8	128.46	4.3	144.69	2.1	167.29	3.4	144.57	6.3
	5	128.85	-3.5	117.04	-5.4	122.08	-5.0	140.14	-3.1	156.54	-6.4	144.00	-0.4
	6	130.36	1.2	124.87	6.7	121.86	-0.2	141.56	1.0	144.01	-8.0	139.96	-2.8
	7	132.19	1.4	120.47	-3.5	127.45	4.6	146.99	3.8	154.89	7.5	144.99	3.6
	8	126.96	-4.0	113.39	-5.9	124.51	-2.3	134.90	-8.2	125.51	-19.0	143.22	-1.2
	9	124.09	-2.3	103.62	-8.6	127.59	2.5	145.17	7.6	147.01	17.1	139.37	-2.7
	10	125.05	0.8	106.82	3.1	127.78	0.1	144.79	-0.3	127.22	-13.5	139.64	0.2
	11	127.14	1.7	115.50	8.1	125.55	-1.7	142.78	-1.4	132.60	4.2	138.03	-1.1
	12	130.15	2.4	110.87	-4.0	130.41	3.9	148.41	3.9	204.51	54.2	144.66	4.8
Annual average		127.82		113.24		126.24		142.80		154.98		141.33	
2025:	1	128.26	-1.5	111.35	0.4	128.47	-1.5	151.84	2.3	119.94	-41.4	142.71	-1.3
	2	131.84	2.8	118.76	6.7	128.31	-0.1	149.73	-1.4	175.35	46.2	143.46	0.5
	3	125.60	-4.7	105.64	-11.0	128.80	0.4	152.15	1.6	165.47	-5.6	138.21	-3.7
	4	126.23	0.5	98.31	-6.9	130.17	1.1	160.23	5.3	138.81	-16.1	147.29	6.6
	5	125.76	-0.4	103.36	5.1	130.72	0.4	150.03	-6.4	130.58	-5.9	142.33	-3.4

Notes:

1. The indices are rounded up to two decimal digits when published and percentage changes up to one decimal digit when published.
2. The whole time-series with seasonally adjusted indices is recalculated every time a new observation is added in the time-series.

METHODOLOGICAL NOTES

Generally	The Industrial Production Index (IPI) in Greece has been compiled by the Hellenic Statistical Authority (ELSTAT) from 1959 onwards.
Purpose of the index	The objective of the index is to compare the magnitude (volume) of the output in the current month in the mining and quarrying, manufacturing, electricity and water supply divisions with the corresponding output of a given fixed period, which is considered as base period. The Industrial Production Index shows the evolution of the value added of the production factors cost, at constant prices.
Legal framework	The compilation of the IPI is based on the framework of the implementation of Council Regulation (EC) No 1165/1998 concerning short-term statistics (STS-R). Furthermore, the IPI is governed by Regulation (EC) No 1893/2006 of the European Parliament and of the Council, by Commission Regulation (EC) No 656/2007, by Council Regulation (EC) No 451/2008, by Regulation (EU) No 2019/2152 of the European Parliament and of the Council on European business statistics, as well as Commission Implementing Regulation (EU) No 2020/1197 laying down technical specifications and arrangements pursuant to Regulation (EU) No 2019/2152.
Reference period	Month.
Base year	2015=100.0.
Revision	The IPI is a fixed base index. The Industrial Production Index was currently revised with new base year 2015 (2015=100.0) according to the provisions of Council Regulation No 1165/1998 concerning short-term statistics. Short-term indices are revised every five (5) years, particularly in calendar years ending in 0 or 5.
Statistical classifications	At the level of branches of economic activities, the statistical classification of economic activities NACE Rev.2 of EU was used (Regulation No 1893/2006), while at the level of main industrial groupings, the allocation of two-digit and three-digit NACE Rev. 2 headings to categories of aggregate classification was used, in accordance with Council Regulation No 656/2007. At product level, the statistical classification CPA 2008 of EU was used, according to Council Regulation No 451/2008.
Geographical coverage	The index covers the whole Country.
Coverage of economic activities	The index covers all the sections of industry, the main industrial groups, as well as all levels of economic activity.
Statistical survey	The data are collected from a sample of 1,263 enterprises. The survey covers 325 products and the measurement of the surveyed products is made in terms of output quantities or in terms of production value or turnover, according to the specific features in each branch of economic activity.
Seasonal adjustment	Seasonal adjustment is the procedure followed to remove the impact of seasonality on the time-series (i.e. the impact of monthly effects, e.g. holidays, tourist period etc.), in order to improve comparability over time. The method applied is TRAMO-SEATS with the use of JDemetra+ 2.0.0. For the seasonal adjustment of the Industrial Production Index at 2-digit level of NACE Rev.2, at section level (B – Mining and Quarrying, C – Manufacturing, D – Electricity and E – Water Supply) and for the Main Industrial Groupings (MIGs), the direct approach is applied, namely each time-series is seasonally adjusted independently. For the overall Industrial Production Index, the indirect approach is applied, with the seasonally adjusted IPI being computed by aggregating the seasonally adjusted MIGs using appropriate weights.
Publication of data	The revised IPI with the new base year 2015 (2015=100.0) is released since July 2019, with May 2019 as the first reference month. Data with base year 2015=100.0 are available from January 2000 onwards.
References	More information about the methodology concerning the compilation and calculation of the index and the time series are available on the website of the Hellenic Statistical Authority (ELSTAT) (http://www.statistics.gr/en/statistics/-/publication/DKT21/-).