

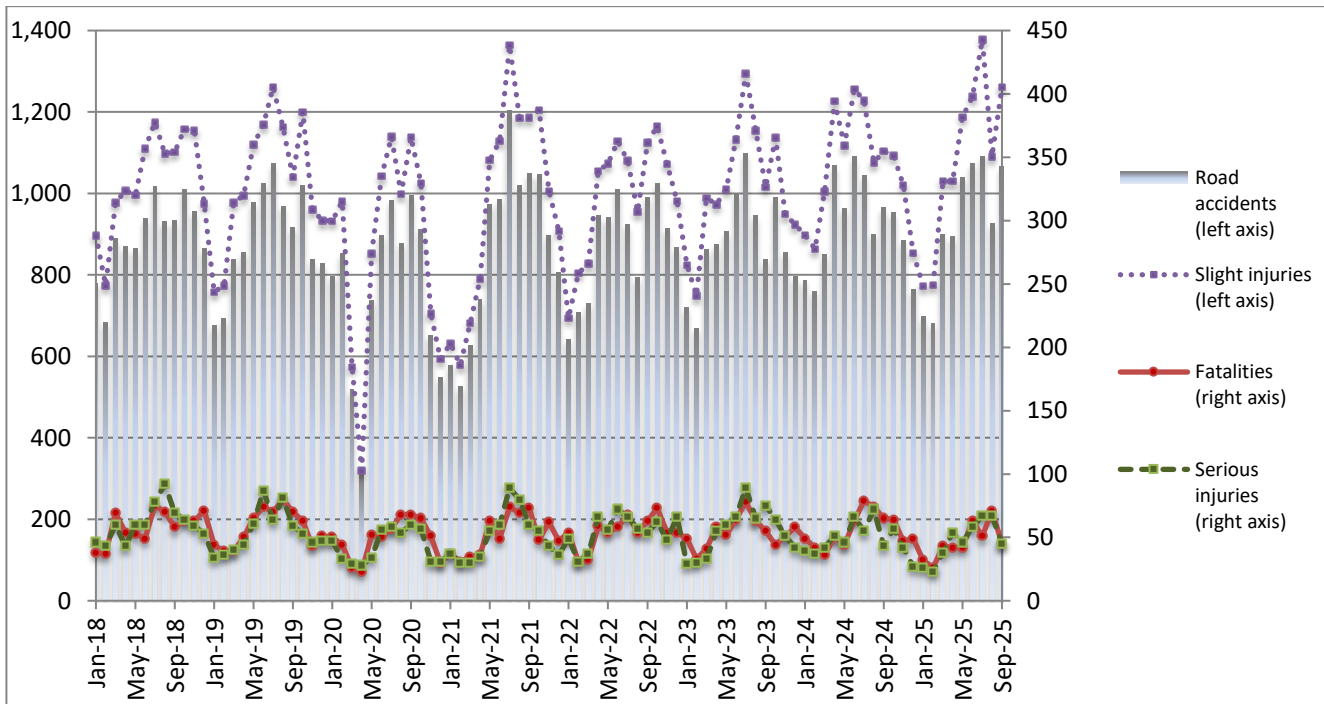


ROAD TRAFFIC ACCIDENTS: September 2025

The Hellenic Statistical Authority (ELSTAT) announces provisional¹ data from the survey on “Road Traffic Accidents” for September 2025. In particular, the road traffic accidents which occurred in Greece, resulting in death or injury, increased by 10.5% in comparison with the corresponding month of 2024 (1,067 road accidents in September 2025, against 966 road accidents in September 2024).

The casualties of the injury-causing accidents that occurred in September 2025 were as follows: 45 deaths, 45 serious injuries and 1,261 slight injuries. In September 2024 the corresponding figures were: 65 deaths, 43 serious injuries and 1,104 slight injuries. Therefore, road traffic accident casualties in September 2025 decreased by 30.8% for deaths and increased by 4.7% for serious injuries and by 14.2% for slight injuries.

Graph 1: Road traffic accidents and casualties, January 2018 - September 2025



Provisional data for the period October 2024 – September 2025

Information on methodological issues:

Sectoral Statistics Division
Transport Statistics Section
M. Kloumpas
Tel: +30 213 135 3095
e-mail: m.kloumpas@statistics.gr

Information for data provision:

Tel: +30 213 135 2022, 2308, 2310
e-mail: data.dissem@statistics.gr

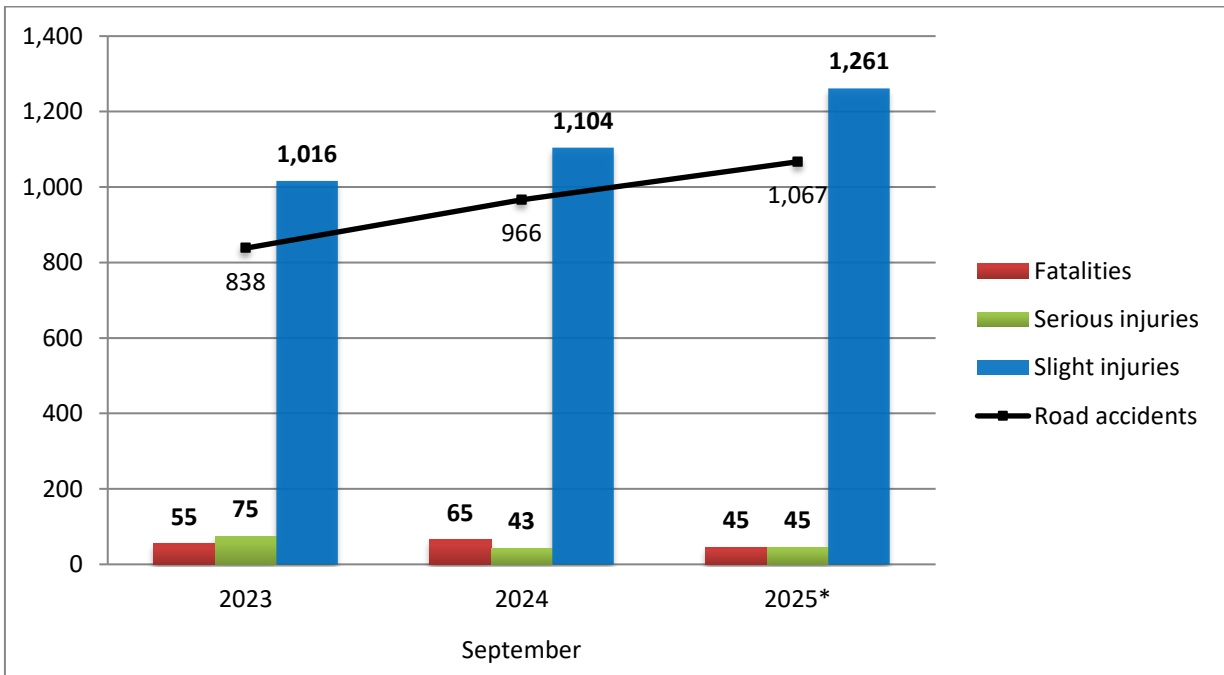
^[1] Data for the reference year is provisional until the finalization of the annual data, which takes place 12 months after the end of the reference year and is published in the corresponding announcement of the following year. During these 12 months the provisional data is updated on the basis of the data of the Road Accident Forms of that year which is transmitted to ELSTAT by Police Authorities (see explanatory notes).

Table 1: Road traffic accidents and casualties, September 2023 - 2025*

	September				
	2023	2024	2024/2023 (%)	2025*	2025*/2024 (%)
Road accidents	838	966	15.3	1,067	10.5
Fatalities	55	65	18.2	45	-30.8
Total injuries	1,091	1,147	5.1	1,306	13.9
Serious injuries	75	43	-42.7	45	4.7
Slight injuries	1,016	1,104	8.7	1,261	14.2

* Provisional data

Graph 2: Road traffic accidents and casualties, September 2023 - 2025*



* Provisional data

Table 2: Road traffic accidents and casualties, by Region and Department, September 2024 and 2025*

Region and Department	Road accidents			Fatalities			Serious injuries			Slight injuries		
	2024	2025*	%	2024	2025*	%	2024	2025*	%	2024	2025*	%
Greece total	966	1,067	10.5	65	45	-30.8	43	45	4.7	1,104	1,261	14.2
Anatoliki Makedonia and Thraki (East Macedonia and Thrace)	27	26	-3.7	1	3	200.0	2	3	50.0	33	39	18.2
Drama	2	5	150.0	0	0		2	0		1	12	
Evros	9	9	0.0	1	1		0	0		8	10	
Kavala	10	6	-40.0	0	1		0	1		16	12	
Xanthi	4	5	25.0	0	1		0	0		5	5	
Rodopi	2	1	-50.0	0	0		0	2		3	0	
Kentriki Makedonia (Central Macedonia)	217	193	-11.1	6	4	-33.3	5	6	20.0	258	229	-11.2
Imathia	0	1	-	0	0		0	0		0	1	
Thessaloniki	198	170	-14.1	5	3		3	5		233	200	
Kilkis	2	5	150.0	0	1		0	0		4	6	
Pella	1	1	0.0	0	0		0	0		1	1	
Pieria	1	0	-100.0	0	0		0	0		1	0	
Serres	4	2	-50.0	0	0		1	1		6	1	
Chalkidiki	11	14	27.3	1	0		1	0		13	20	
Dytiki Makedonia (West Macedonia)	5	7	40.0	1	1	0.0	0	2	-	5	9	80.0
Grevena	1	4	300.0	1	1		0	1		0	5	
Kastoria	0	1	-	0	0		0	1		0	1	
Kozani	3	2	-33.3	0	0		0	0		4	3	
Florina	1	0	-100.0	0	0		0	0		1	0	
Ipeiros (Epirus)	17	11	-35.3	5	2	-60.0	5	0	-100.0	17	14	-17.6
Arta	5	1	-80.0	0	1		3	0		3	0	
Thesprotia	1	4	300.0	0	1		0	0		1	3	
Ioannina	6	2	-66.7	2	0		0	0		10	2	
Preveza	5	4	-20.0	3	0		2	0		3	9	
Thessalia (Thessaly)	19	21	10.5	5	5	0.0	0	3	-	18	23	27.8
Karditsa	3	6	100.0	0	0		0	0		4	8	
Larissa	6	7	16.7	1	3		0	1		6	7	
Magnissia	5	7	40.0	1	2		0	2		6	7	
Trikala	5	1	-80.0	3	0		0	0		2	1	
Ionian Nisia (Ionian Islands)	17	29	70.6	5	3	-40.0	1	4	300.0	14	32	128.6
Zakynthos	1	7	600.0	1	1		0	1		0	10	
Kerkyra	5	14	180.0	1	1		0	1		6	14	
Kefallinia	5	7	40.0	1	1		0	2		4	7	
Lefkada	6	1	-83.3	2	0		1	0		4	1	

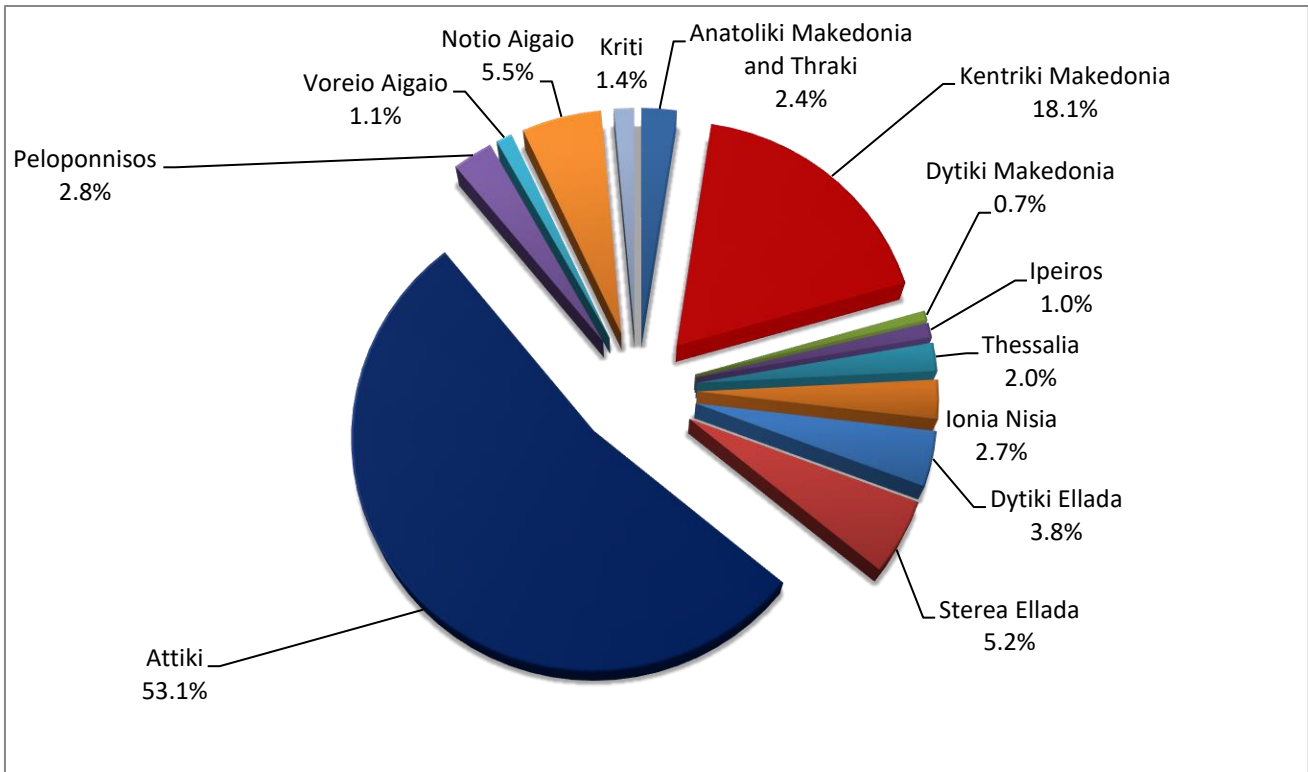
* Provisional data

Table 2: Road traffic accidents and casualties, by Region and Department, September 2024 and 2025*
(Continued)

Region and Department	Road accidents			Fatalities			Serious injuries			Slight injuries		
	2024	2025*	%	2024	2025*	%	2024	2025*	%	2024	2025*	%
Dytiki Ellada (West Greece)	40	41	2.5	5	3	-40.0	3	2	-33.3	47	54	14.9
Etolia & Akarnania	19	16	-15.8	1	0		2	0		24	28	
Achaia	14	16	14.3	2	3		1	1		16	16	
Ilia	7	9	28.6	2	0		0	1		7	10	
Sterea Ellada	51	56	9.8	2	5	150.0	5	4	-20.0	58	72	24.1
Viotia	9	7	-22.2	0	0		2	0		9	10	
Evia	26	26	0.0	1	2		2	2		30	30	
Evrytania	2	1	-50.0	0	0		0	0		3	1	
Fthiotida	12	15	25.0	1	1		1	1		14	24	
Fokida	2	7	250.0	0	2		0	1		2	7	
Attiki (Attica)	462	567	22.7	15	7	-53.3	12	11	-8.3	535	660	23.4
Peloponnisos (Peloponnese)	27	30	11.1	7	5	-28.6	2	1	-50.0	26	37	42.3
Argolida	2	3	50.0	0	2		0	0		2	1	
Arkadia	2	1	-50.0	1	0		0	1		1	0	
Korinthia	14	13	-7.1	2	2		2	0		15	14	
Lakonia	1	7	600.0	0	0		0	0		1	9	
Messinia	8	6	-25.0	4	1		0	0		7	13	
Voreio Aigaio (North Aegean)	20	12	-40.0	0	1	-	2	0	-100.0	20	12	-40.0
Lesvos	11	8	-27.3	0	1		1	0		12	7	
Samos	5	3	-40.0	0	0		1	0		4	4	
Chios	4	1	-75.0	0	0		0	0		4	1	
Notio Aigaio (South Aegean)	44	59	34.1	5	2	-60.0	5	7	40.0	55	67	21.8
Dodekanissos	23	19	-17.4	2	1		4	3		24	20	
Kyklades	21	40	90.5	3	1		1	4		31	47	
Kriti (Crete)	20	15	-25.0	8	4	-50.0	1	2	100.0	18	13	-27.8
Iraklio	7	8	14.3	3	3		0	1		11	5	
Lassithi	4	3	-25.0	1	0		1	0		2	4	
Rethymno	5	2	-60.0	2	1		0	0		3	2	
Chania	4	2	-50.0	2	0		0	1		2	2	

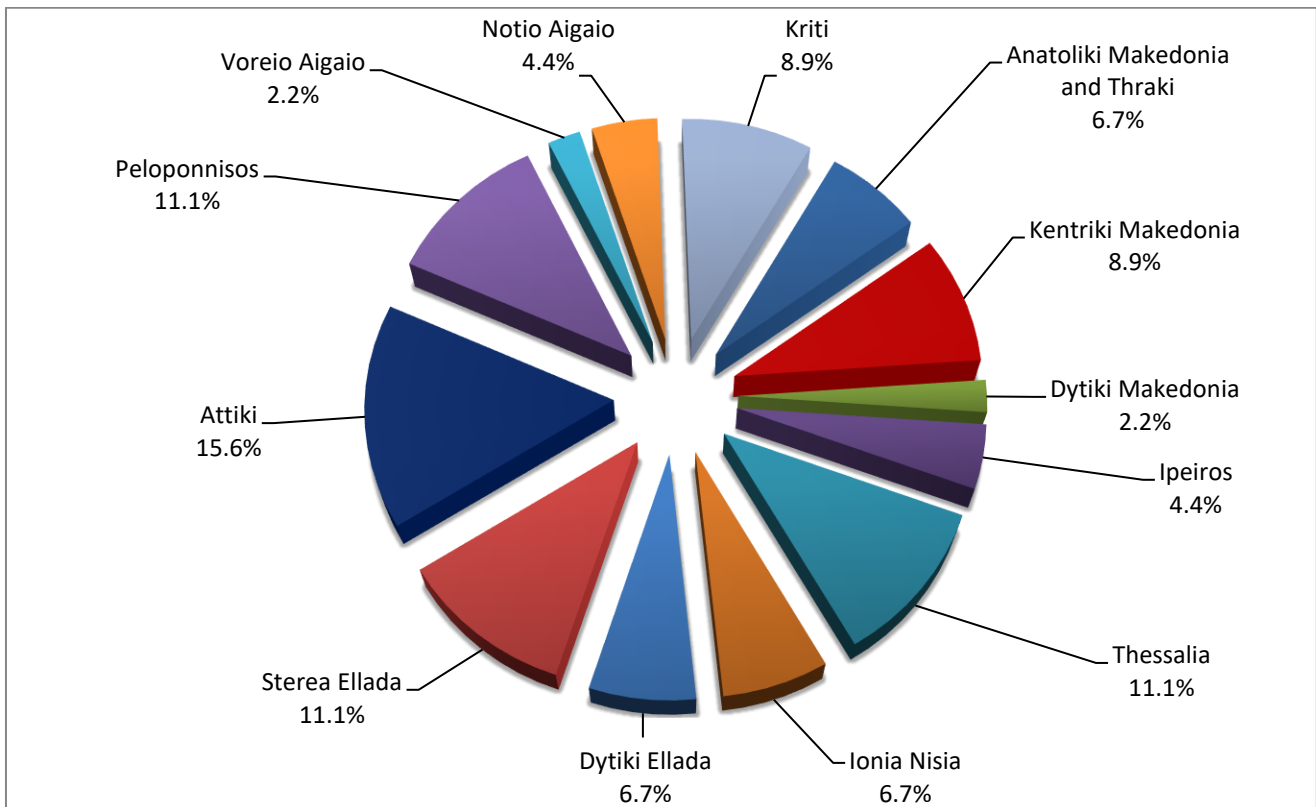
* Provisional data

Graph 3: Road traffic accidents by Region, September 2025 *



* Provisional data

Graph 4: Fatalities by Region, September 2025 *

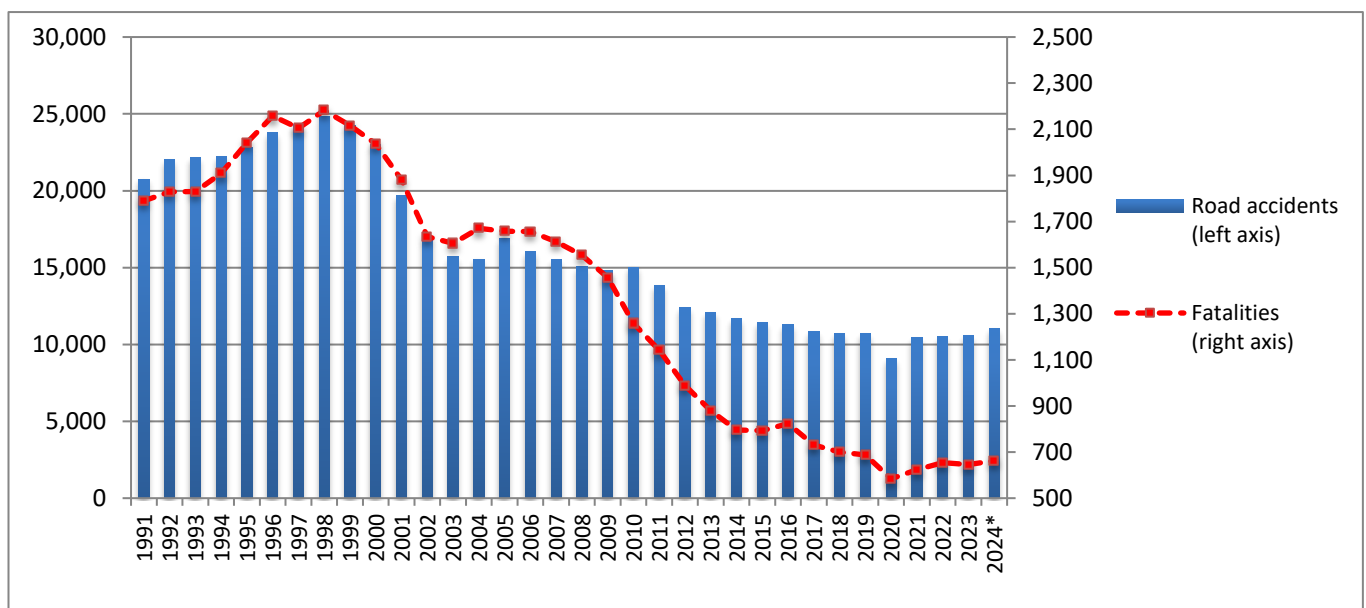


* Provisional data

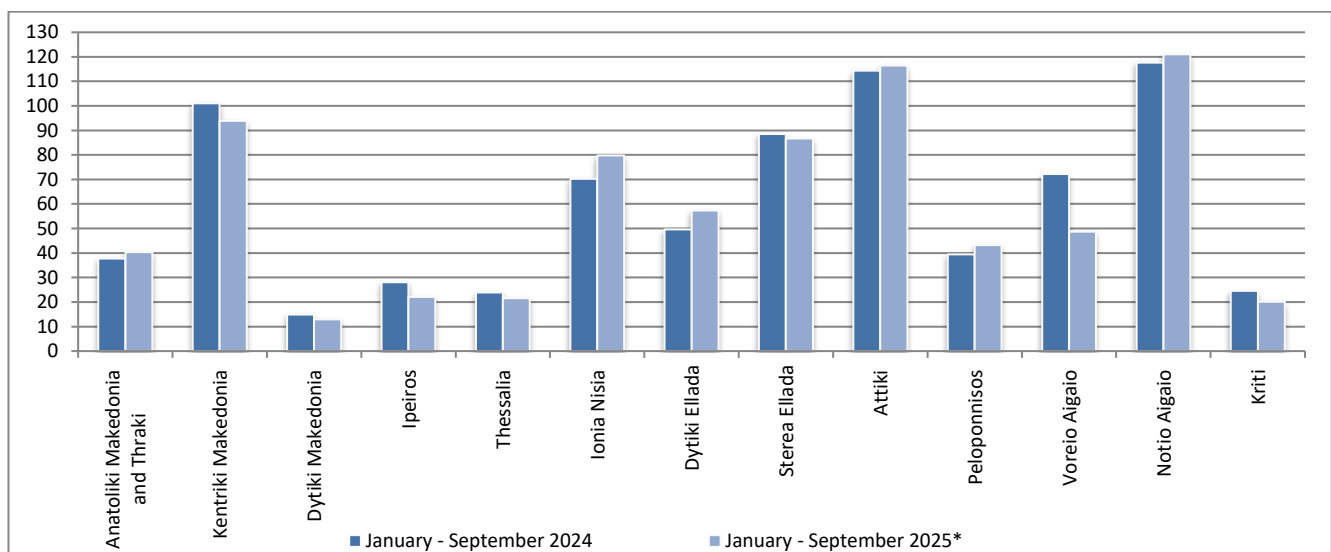
Table 3: Road traffic accidents and casualties for the period January - September 2023,2024 and 2025*

	2023		2024		2025*
	January - September	Total year	January - September	Total year*	January - September
Road Accidents	7,913	10,553	8,425	11,028	8,368
<i>Annual Change (%)</i>			6.5	4.5	-0.7
Fatalities	493	646	502	662	415
<i>Annual Change (%)</i>			1.8	2.5	-17.3
Serious injuries	502	659	451	577	424
<i>Annual Change (%)</i>			-10.2	-12.4	-6.0
Slight injuries	9,146	12,156	9,776	12,744	9,763
<i>Annual Change (%)</i>			6.9	4.8	-0.1

Graph 5: Total road traffic accidents and fatalities, 1991-2024*

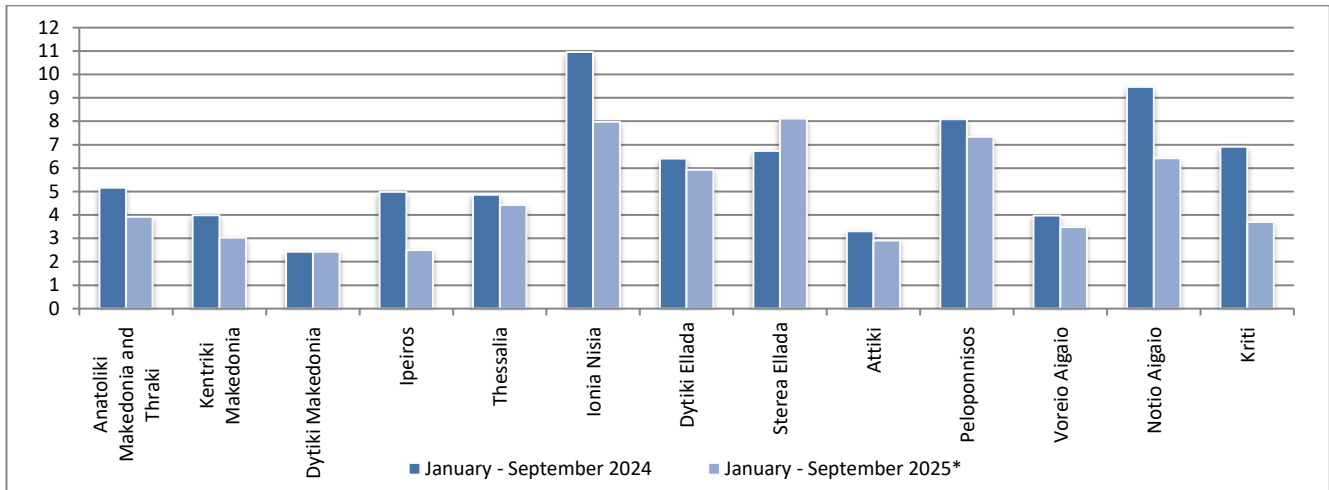


Graph 6: Road traffic accidents per 100,000 inhabitants, for the period January - September 2024 and 2025*

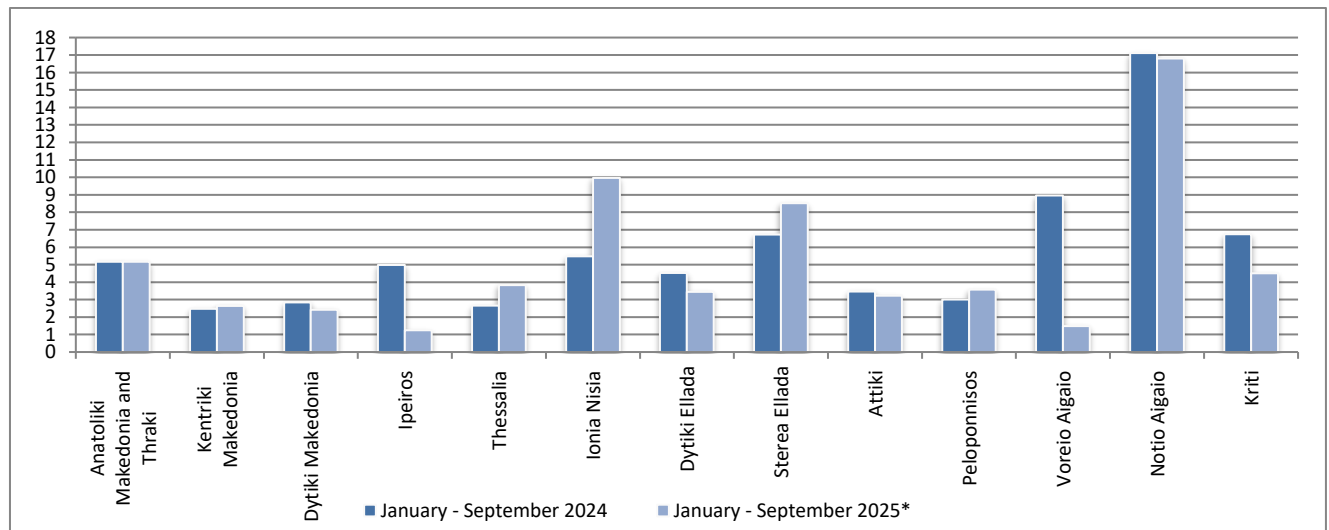


* Provisional data

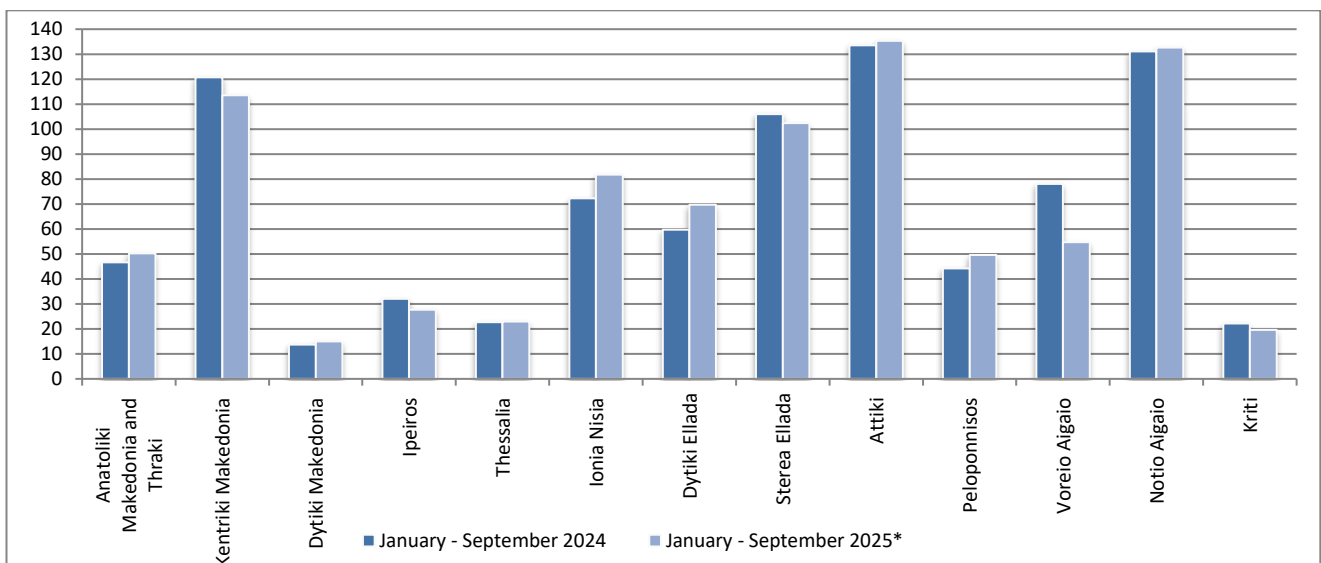
Graph 7: Fatalities per 100,000 inhabitants, for the period January - September 2024 and 2025*



Graph 8: Serious injuries per 100,000 inhabitants, for the period January - September 2024 and 2025*



Graph 9: Slight injuries per 100,000 inhabitants, for the period January - September 2024 and 2025*



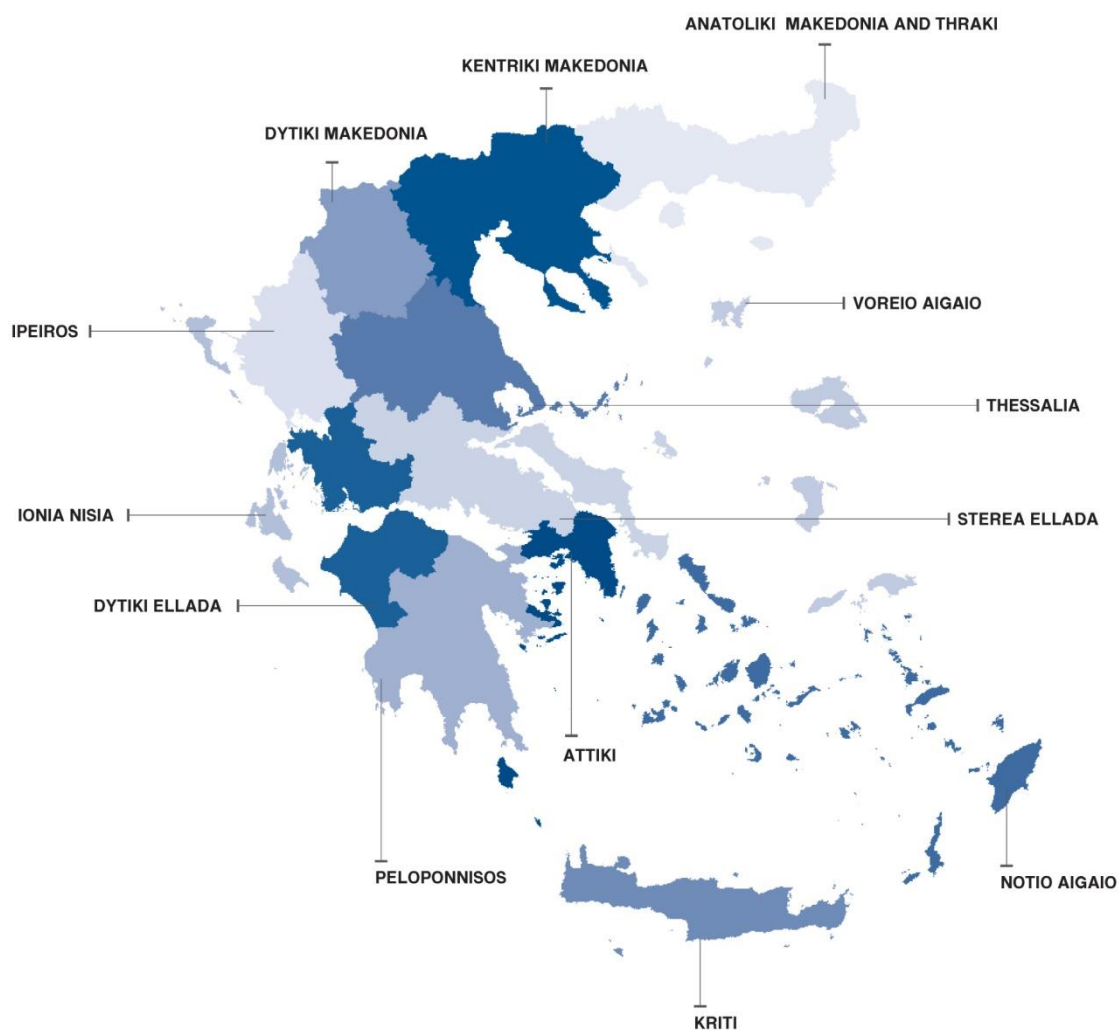
* Provisional data

EXPLANATORY NOTES

Survey on Road Traffic Accidents The Survey on Road Traffic Accidents is conducted on a monthly basis and it records, for each region (see map) and department of Greece and for each month separately, the number of accidents resulting in death or injury, as well as the number of persons injured by categories (drivers, passengers, pedestrians).

On a yearly basis, road traffic accidents are further analyzed. The competent agencies for filling in/collecting the forms on road accidents are the local Police Authorities and the local Port Authorities of Greece.

The lower level of analysis for the place where an injury road accident occurred is the settlement. Data are collected on a monthly basis. The main variables are the following: place of accident, kind of road, casualties, conditions of road surface and type of road.



Legal basis The Survey on Road Traffic Accidents is governed by Council Decision 93/704 of the European Community.

Reference period Monthly.

Availability of data Provisional data are available 2 months after the reference month. Final data are available 14 months after the reference year.

Definitions **Road accident** (injury accident): Any accident involving at least one road motor vehicle in motion on a public road or square to which the public has access (excluding yards, industrial sites or vehicle depot of public transport enterprises), resulting in at least one injured or killed person. Accidents with only material damages are not included.

Fatality (Death): Any person killed immediately or dying within 30 days as a result of an injury accident (This national definition applies since 01.01.1996)

Person injured: Any person who sustained an injury as result of an injury accident, and who normally needs medical treatment.

Serious injury: Any person who sustained an injury as result of an injury accident, such as brain damages, mutilation, multiple injuries, which may result in lack of awareness or which are life-threatening.

Slight injury: Any person injured who sustained minor and not life-threatening injuries.

Vehicle: Include motor vehicles, trolleybuses, motorcycles, bicycles, motorbikes, agricultural and road making machines, animal and hand-drawn vehicles. Railway vehicles are excluded, unless the road accident involves at least one of the aforementioned types of vehicles and therefore, railway vehicles are considered vehicles.

Methodology The forms of the survey are filled in by the local Police Authorities and the local Port Authorities as well.

References More information about Road Traffic Accidents is available on ELSTAT's website and more specifically at the link: <https://www.statistics.gr/en/statistics/-/publication/SDT03/>.