



HELLENIC REPUBLIC



MINISTRY OF ECONOMY AND FINANCE



**GENERAL SECRETARIAT OF  
THE NATIONAL STATISTICAL SERVICE  
OF GREECE**

Piraeus, 5 July 2007

## **PRESS RELEASE**

### **CONSUMER PRICE INDEX <sup>1, 2, 3</sup> (2005=100,0)**

**June 2007**

The Consumer Price Index (CPI) in June 2007, as compared to June 2006, increased by 2,6%. A year earlier, the annual rate of change of the CPI was 3,2%.

The CPI in June 2007, as compared to May 2007, decreased by 0,1%. A year earlier, the monthly rate of change of the CPI was also -0,1%.

In the twelve-month period July 06 – June 07 the average rate of change of the CPI was 2,9%. A year earlier, the corresponding rate of change of the CPI was 3,5%.

---

<sup>1</sup>The Consumer Price Index (CPI), in Greece, is compiled since 1959 onwards, by the National Statistical Service of Greece (NSSG). The compiled CPI till the year 2000 referred to the urban areas of Greece, while the compiled CPI from 2001 refers to the whole Country. The CPI is revised in regular time according to the results of the latest, each time, Household Budget Survey (HBS). The last revision of the CPI was based on the results of the HBS conducted in the period 2004/05 and since April 2006, the revised CPI is published, with base year 2005=100,0.

<sup>2</sup> The aim of this index is to estimate the general level of the prices of goods and services that compose the "basket" of the purchases of the average household.

<sup>3</sup> The revised CPI in conformity with the HICPs practice is rounded up to 2 decimal figures when published.

More information about CPI is included to a special methodological note.

## Consumer Price Index – June 2007

Monthly rates of change

(2005=100,0)

Main groups of goods and services	Weights HBS 04 / 05 (%)	2007	2007	Rate of change (%)	2006	2006	Rate of change (%)
		June	May		June	May	
1 Food & non-Alcoholic Beverages	178,21	105,38	106,86	-1,4	103,01	104,74	-1,7
2 Alcoholic Beverages & Tobacco	41,60	112,41	112,37	0,0	105,33	103,30	2,0
3 Clothing and Footwear	87,01	109,46	109,45	0,0	106,17	106,10	0,1
4 Housing	116,51	109,13	108,86	0,2	106,88	106,68	0,2
5 Household Equipment	78,22	105,38	105,29	0,1	103,10	102,84	0,2
6 Health	74,55	105,84	105,71	0,1	102,55	102,48	0,1
7 Transport	132,21	105,81	105,67	0,1	104,02	103,99	0,0
8 Communication	47,02	101,11	101,11	0,0	100,13	100,14	0,0
9 Recreation and Culture	50,30	103,50	103,22	0,3	101,42	101,37	0,0
10 Education	26,63	106,59	106,59	0,0	102,70	102,70	0,0
11 Hotels, Cafés & Restaurants	100,19	106,28	105,73	0,5	102,34	102,00	0,3
12 Miscellaneous Goods & Services	67,56	104,87	104,61	0,2	102,56	102,38	0,2
Overall Index	1000,00	106,35	106,45	-0,1	103,62	103,73	-0,1

Note 1: The indices are calculated with infinite decimal figures and rounded up to two decimal figures when published.

Note 2: Percentage changes are calculated on the basis of indices with infinite decimal figures and rounded up to one decimal figure when published.

**Consumer Price Index – June 2007**

Annual rates of change

(2005=100,0)

I

Main groups of goods and services		June	June	Rate of change (%)	Effect
		2006	2005		
1	Food and non Alcoholic Beverages	103,01	99,54	3,5	0,6159
2	Alcoholic Beverages and Tobacco	105,33	100,44	4,9	0,2026
3	Clothing and Footwear	106,17	102,68	3,4	0,3025
4	Housing	106,88	99,96	6,9	0,8032
5	Household Equipment	103,10	100,96	2,1	0,1670
6	Health	102,55	100,31	2,2	0,1661
7	Transport	104,02	100,95	3,0	0,4039
8	Communication	100,13	99,60	0,5	0,0247
9	Recreation and Culture	101,42	99,83	1,6	0,0800
10	Education	102,70	98,81	3,9	0,1031
11	Hotels, Cafés and Restaurants	102,34	99,85	2,5	0,2487
12	Miscellaneous Goods and Services	102,56	100,37	2,2	0,1472
Overall Index		103,62	100,37	3,2	

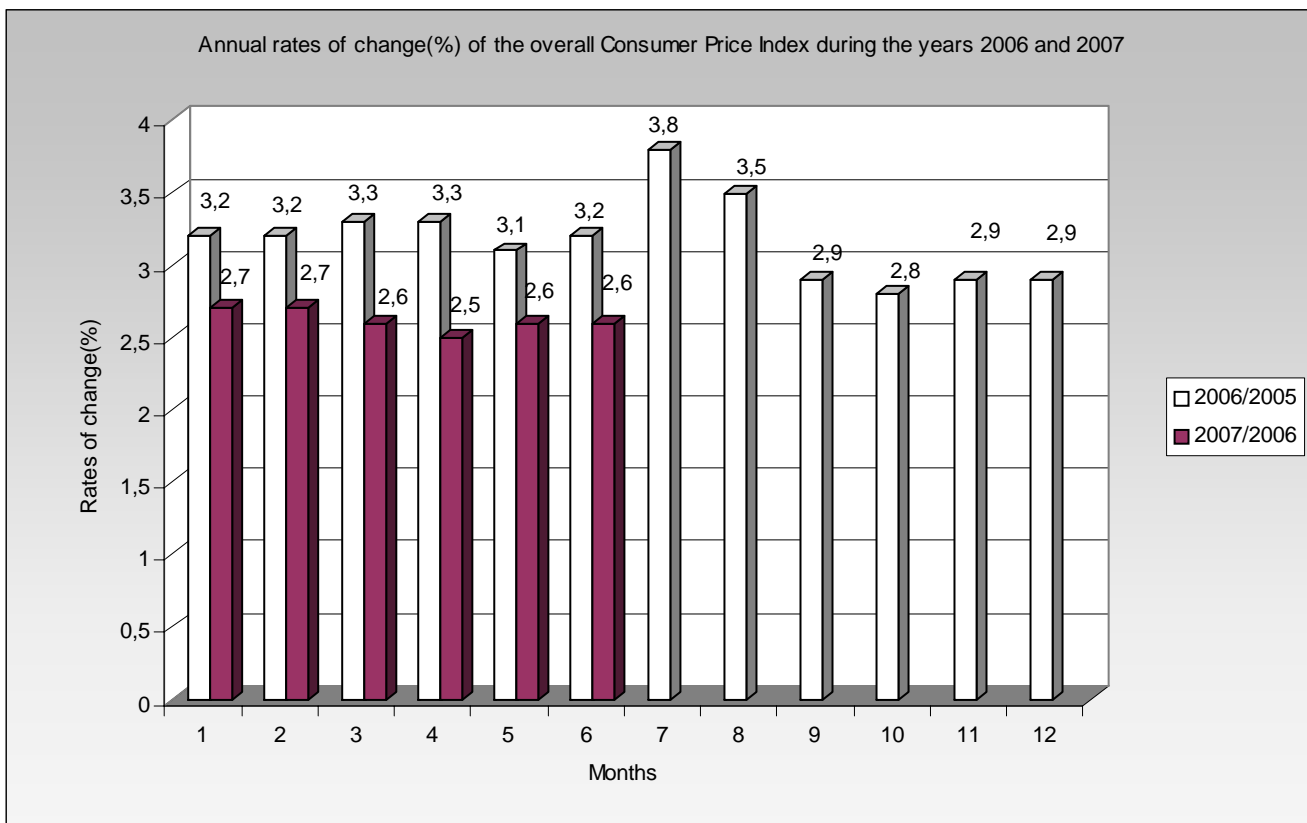
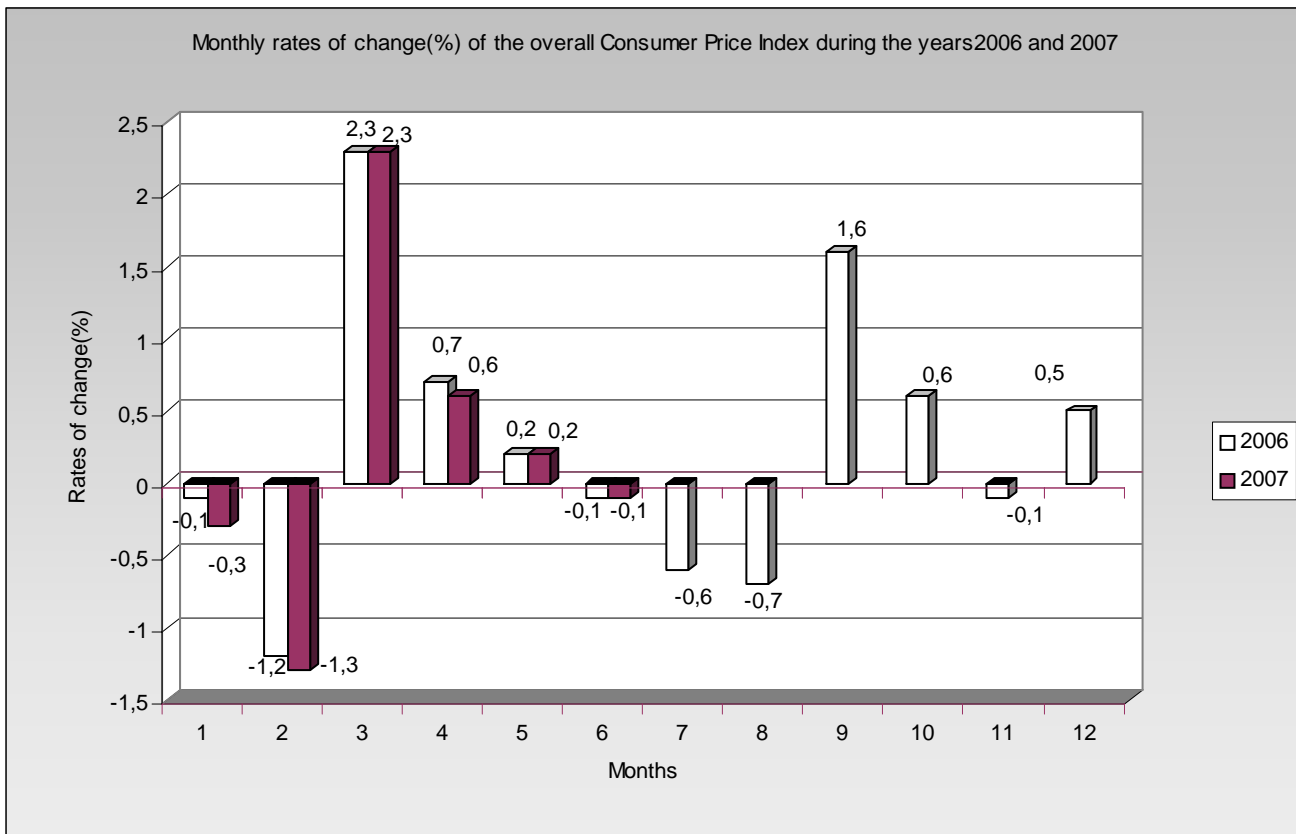
II

Main groups of goods and services		June	June	Rate of change (%)	Effect
		2007	2006		
1	Food and non Alcoholic Beverages	105,38	103,01	2,3	0,4070
2	Alcoholic Beverages and Tobacco	112,41	105,33	6,7	0,2843
3	Clothing and Footwear	109,46	106,17	3,1	0,2763
4	Housing	109,13	106,88	2,1	0,2533
5	Household Equipment	105,38	103,10	2,2	0,1722
6	Health	105,84	102,55	3,2	0,2371
7	Transport	105,81	104,02	1,7	0,2281
8	Communication	101,11	100,13	1,0	0,0443
9	Recreation and Culture	103,50	101,42	2,0	0,1008
10	Education	106,59	102,70	3,8	0,1000
11	Hotels, Cafés and Restaurants	106,28	102,34	3,8	0,3805
12	Miscellaneous Goods and Services	104,87	102,56	2,3	0,1506
Overall Index		106,35	103,62	2,6	

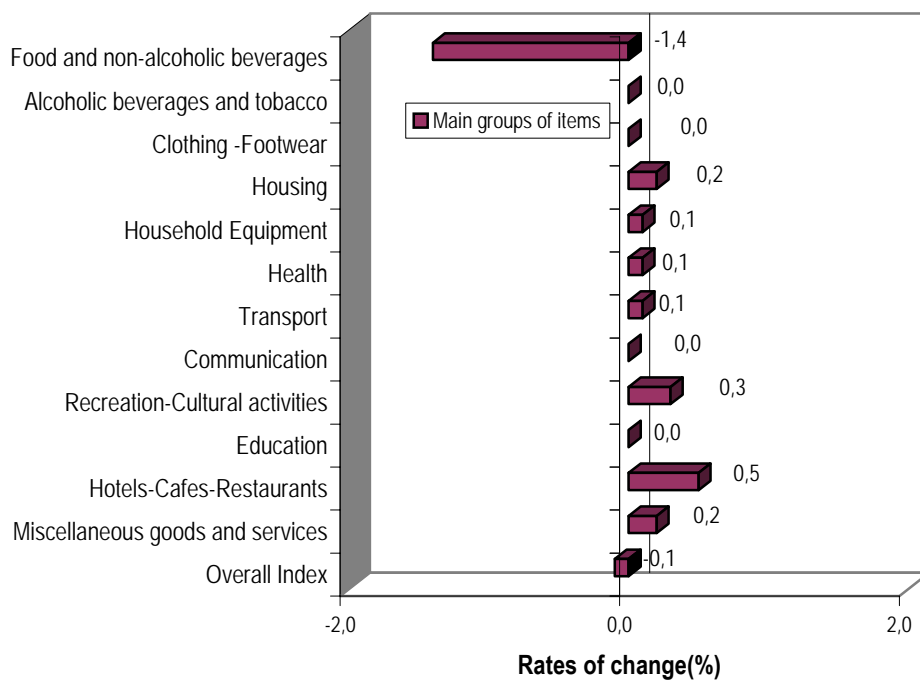
Note 1: The indices are calculated with infinite decimal figures and rounded up to two decimal figures when published.

Note 2: Percentage changes are calculated on the basis of indices with infinite decimal figures and rounded up to one decimal figure when published.

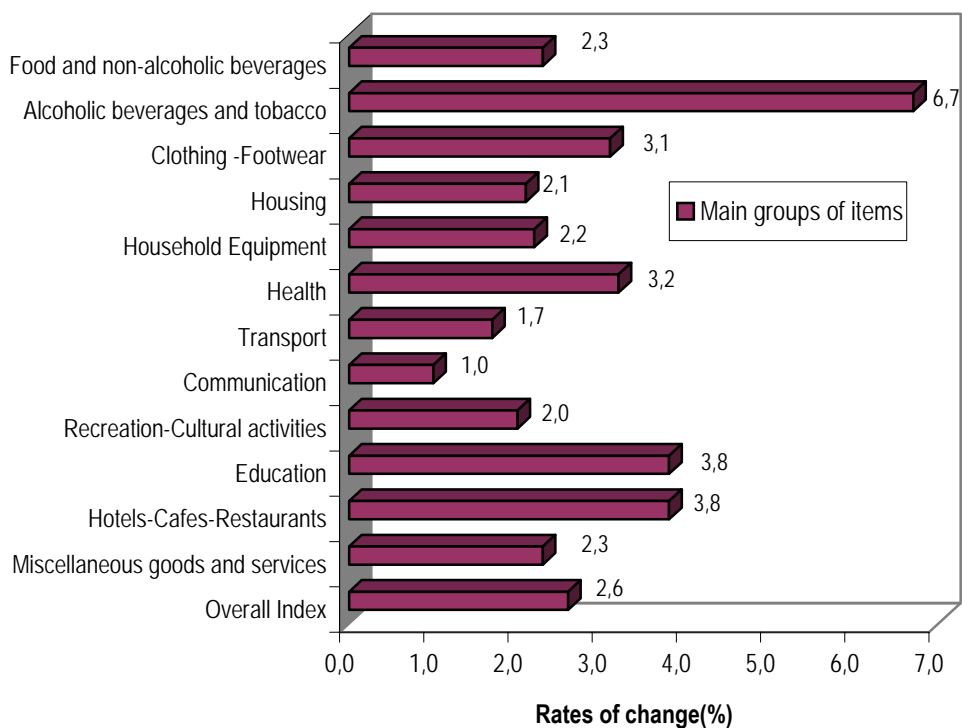
## DIAGRAMS



Monthly rates of change (%) of the CPI between June 2007 and May 2007



Annual rates of change (%) of the CPI between June 2007 and June 2006



For further information on data:

**Maria Stavropoulou**

**Tel:0030 210 4852125**

**Fax:0030 210 4852724**

[stavropm@statistics.gr](mailto:stavropm@statistics.gr)