



HELLENIC REPUBLIC



HELLENIC STATISTICAL AUTHORITY

Piraeus, 21 May 2012

## PRESS RELEASE

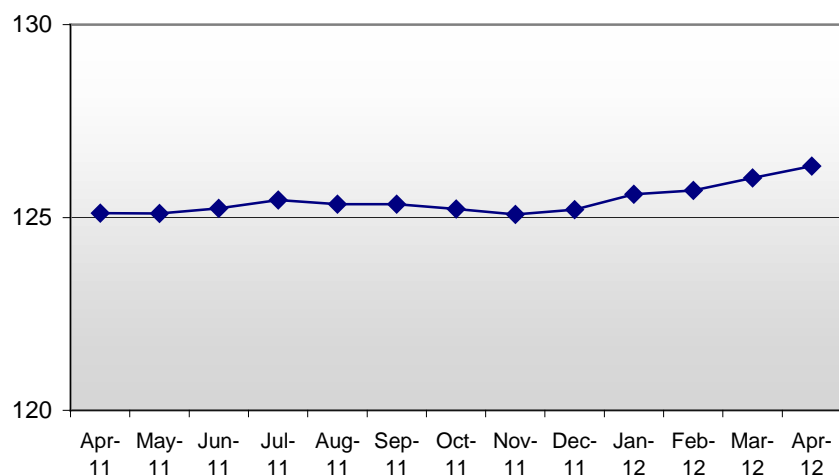
### MATERIAL COSTS INDEX IN CONSTRUCTION OF NEW RESIDENTIAL BUILDINGS: April 2012

The Material Costs Index in Construction of New Residential Buildings in April 2012 compared with April 2011 recorded a rise of 1.0%. The index in April 2011 had recorded an increase of 2.7% compared with April 2010 (Table 1).

The Material Costs Index in April 2012 compared with March 2012 increased by 0.2%. The index had decreased by 0.1% between April 2011 and March 2011 (Table 2).

The twelve-month average index, from May 2011 to April 2012, compared with the same index of the period from May 2010 to April 2011, increased by 1.5%. The previous year the twelve-month average index had increased by 3.5% (Table 3).

**Evolution of Material Costs Index in Construction  
of New Residential Buildings  
(2005=100.0)**



Information:

Economic and Short-Term  
Indicators Division

Wholesale Prices and Price  
Indices Section

Costas Paschalidis  
Tel: 0030 213 1352713  
Fax:0030 213 1352714

**Table 1: Annual rates of change of the Material Costs Index in Construction of New Residential Buildings**

**Base year: 2005=100.0**

Code	Material groups	Weights				Change (%)	
			2012	April 2011	2010	2012/2011	2011/2010
14612	Overall Index	100.00	126.3	125.1	121.8	1.0	2.7
1461201	Cement, mortars and ready mixed concrete	18.60	115.6	115.5	115.3	0.1	0.1
1461202	Natural stone	1.94	115.8	117.3	116.3	-1.3	0.9
1461203	Marble products, granites	4.25	120.4	119.2	119.7	1.0	-0.5
1461204	Artificial stone	5.23	133.8	132.9	130.9	0.7	1.5
1461205	Timber and builders' carpentry	16.64	118.9	118.8	118.3	0.0	0.5
1461206	Basic metals	22.59	138.5	136.7	129.2	1.4	5.8
1461207	Plumbing, heating and drainage equipment and supplies	7.42	147.2	141.1	133.2	4.4	5.9
1461208	Door and window fittings	2.16	118.7	119.1	119.7	-0.3	-0.5
1461209	Electrical equipment	4.74	137.4	137.6	127.5	-0.1	8.0
1461210	Glass products	1.96	113.5	113.0	114.1	0.5	-1.0
1461211	Paints and varnishes	3.08	115.6	113.9	113.9	1.5	-0.1
1461212	Floor and wall tiles and sanitary ware	5.32	115.1	113.7	112.7	1.3	0.8
1461213	Insulating materials	1.17	117.2	116.0	115.5	1.0	0.4
1461214	Elevators	3.36	108.4	110.4	110.4	-1.7	-0.1
1461215	Fuel for machinery (diesel), electricity, water	1.54	160.1	149.4	131.7	7.1	13.5

*Notes:*

- 1. The indices are calculated with infinite decimal figures and are rounded up to one decimal figure when published.*
- 2. Percentage changes are calculated on the basis of indices with five decimal figures and are rounded up to one decimal figure when published.*

**Table 2: Monthly rates of change of the Material Costs Index in Construction of New Residential Buildings**

**Base year: 2005=100.0**

Code	Material groups	Weights	April 2012	March 2012	Change (%)	April 2011	March 2011	Change (%)
14612	Overall Index	100.00	126.3	126.0	0.2	125.1	125.2	-0.1
1461201	Cement, mortars and ready mixed concrete	18.60	115.6	115.4	0.2	115.5	115.4	0.1
1461202	Natural stone	1.94	115.8	115.8	0.0	117.3	117.3	0.0
1461203	Marble products, granites	4.25	120.4	120.4	0.0	119.2	119.2	0.0
1461204	Artificial stone	5.23	133.8	133.8	0.0	132.9	132.9	0.0
1461205	Timber and builders' carpentry	16.64	118.9	118.9	0.0	118.8	118.8	0.0
1461206	Basic metals	22.59	138.5	138.0	0.4	136.7	136.9	-0.1
1461207	Plumbing, heating and drainage equipment and supplies	7.42	147.2	145.2	1.4	141.1	141.9	-0.6
1461208	Door and window fittings	2.16	118.7	118.7	0.0	119.1	119.1	0.0
1461209	Electrical equipment	4.74	137.4	138.0	-0.4	137.6	137.8	-0.1
1461210	Glass products	1.96	113.5	113.5	0.0	113.0	113.0	0.0
1461211	Paints and varnishes	3.08	115.6	116.9	-1.1	113.9	113.9	0.0
1461212	Floor and wall tiles and sanitary ware	5.32	115.1	114.2	0.8	113.7	113.7	0.0
1461213	Insulating materials	1.17	117.2	117.2	0.0	116.0	115.9	0.1
1461214	Elevators	3.36	108.4	108.4	0.0	110.4	110.4	0.0
1461215	Fuel for machinery (diesel), electricity, water	1.54	160.1	160.3	-0.2	149.4	148.3	0.7

**Notes:**

1. The indices are calculated with infinite decimal figures and are rounded up to one decimal figure when published.

2. Percentage changes are calculated on the basis of indices with five decimal figures and are rounded up to one decimal figure when published.

**Table 3: Material Cost Price Indices Changes**

**Base year: 2005=100.0**

Year and month		Overall Index	Monthly changes (%)	Annual changes %	12-month moving average	12-month moving average changes %
<b>2010:</b>	I	120.1	0.3	1.5	118.7	-0.8
	II	120.1	0.0	1.8	118.9	-0.9
	III	120.7	0.5	2.7	119.1	-0.7
	IV	121.8	0.9	3.5	119.5	-0.4
	V	122.2	0.3	3.6	119.8	0.0
	VI	122.2	0.0	3.4	120.2	0.6
	VII	122.4	0.1	3.5	120.5	1.2
	VIII	122.6	0.2	3.3	120.8	1.8
	IX	122.8	0.1	3.1	121.1	2.2
	X	123.1	0.2	3.1	121.4	2.6
	XI	123.5	0.4	3.5	121.8	2.8
	XII	124.0	0.4	3.6	122.1	3.0
<i>Annual Average</i>		<i>122.1</i>			<i>122.1</i>	<i>3.0</i>
<b>2011:</b>	I	124.7	0.6	3.9	122.5	3.2
	II	125.1	0.3	4.2	122.9	3.4
	III	125.2	0.1	3.7	123.3	3.5
	IV	125.1	-0.1	2.7	123.6	3.5
	V	125.1	0.0	2.3	123.8	3.4
	VI	125.2	0.1	2.5	124.1	3.3
	VII	125.5	0.2	2.5	124.3	3.2
	VIII	125.3	-0.1	2.2	124.6	3.1
	IX	125.3	0.0	2.1	124.8	3.0
	X	125.2	-0.1	1.7	125.0	2.9
	XI	125.1	-0.1	1.2	125.1	2.7
	XII	125.2	0.1	1.0	125.2	2.5
<i>Annual Average</i>		<i>125.2</i>			<i>125.2</i>	<i>2.5</i>
<b>2012:</b>	I	125.6	0.3	0.7	125.3	2.2
	II	125.7	0.1	0.5	125.3	1.9
	III	126.0	0.3	0.7	125.4	1.7
	IV	126.3	0.2	1.0	125.5	1.5
	V					
	VI					
	VII					
	VIII					
	IX					
	X					
	XI					
	XII					
<i>Annual Average</i>						

**Notes:**

1. The indices are calculated with infinite decimal figures and are rounded up to one decimal figure when published.
2. Percentage changes are calculated on the basis of indices with five decimal figures and are rounded up to one decimal figure when published.

## METHODOLOGICAL NOTES

<b>Generally</b>	The compilation of the Material Costs Index in Construction of New Residential Buildings started in 1975. The index, in its current form, is compiled since January 2005, when it replaced the previous index with base year 2000.
<b>Purpose of the index – definitions</b>	<p>The purpose of the index is to measure the monthly rates of change in the prices of building materials paid by the constructors and are consumed in the construction of new residential buildings.</p> <p>The Material Costs Index is a monthly index and consists a sub-index of the overall cost index in construction of new residential buildings.</p> <p>For the compilation of the index the selected prices of the materials are those which are actually paid by the construction enterprises for materials supplied at the site and do not include VAT.</p>
<b>Legal basis</b>	The compilation of the Material Costs Index is governed by Council Regulation (EEC) No.1165/98 concerning short-term statistics and by Regulation No.1158/05 (amending the above mentioned Regulation) of the European Parliament and of the Council.
<b>Reference period</b>	Month
<b>Base year</b>	2005=100.0.
<b>Revision</b>	The Material Costs Index is a fixed base index. Pursuant to the provisions of Council Regulation No 1165/98 concerning short-term statistics, the index in question is updated every five (5) years on years ending in 0 or 5.
<b>Statistical classification</b>	The national classification which includes 89 categories of materials aggregated in 15 groups is followed.
<b>Geographical coverage</b>	The Index covers the whole of the country. The prices are collected in the biggest cities of the country (Greater Athens, Thessaloniki, Patras, Volos, Larisa and Herakleion).
<b>Coverage of economic activities</b>	The Material Costs Index in Construction of New Residential Buildings is an input index that refers to the prices paid for building materials by the constructors of new residential buildings.
<b>Statistical survey</b>	A total number of 1477 observations (prices) collected from 270 commercial or industrial enterprises supplying building materials, is used for the compilation of the index.
<b>Publication of data</b>	The index with the new base year (2005) is being released since February 2009, with January 2009 as the first reference month. Times series data with base year 2005=100.0, are available from January 2000 onwards.
<b>References</b>	More information on the methodology concerning the compilation and calculation of the index and for the time series is available on the EL.STAT. website ( <a href="http://www.statistics.gr">www.statistics.gr</a> ).